



# **SAR Evaluation Report**

**IN ACCORDANCE WITH THE REQUIREMENTS OF  
FCC OET BULLETIN 65 SUPPLEMENT C**

**FOR**

**NOTEBOOK PC**

**MODELS: NP-Q1**

**FCC ID: A3L-NP-Q1**

**REPORT NUMBER: 06I10409-2**

**ISSUE DATE: July 5, 2006**

*Prepared for*

**SAMSUNG ELECTRONICS CO., LTD  
#416, MAETAN -3 DONG, PARDAL-GU  
SUWON CITY, GYEONGGI-DO 442-742, KOREA**

*Prepared by*

**COMPLIANCE CERTIFICATION SERVICES  
561F MONTEREY ROAD,  
MORGAN HILL, CA 95037, USA  
TEL: (408) 463-0885**



**Revision History**

Rev.	Issued date	Revisions	Revised By
--	July 5, 2006	Initial issue	HS

**CERTIFICATE OF COMPLIANCE (SAR EVALUATION)****DATES OF TEST:** June 29, 2006

APPLICANT: ADDRESS:	Samsung Electronics CO., LTD #416, Maetan -3 Dong, Pardal-Gu, Suwon City, Gyeonggi-Do 442-742, Korea
FCC ID: MODELS:	A3L-NP-Q1 NP-Q1
DEVICE CATEGORY: EXPOSURE CATEGORY:	Portable Device General Population/Uncontrolled Exposure

Notebook PC has a WLAN FCC ID: PPD-AR5BXB61 and collocated bluetooth radio FCC ID: QDS-BRCM1018.

Test Sample is a:	Production unit		
Modulation type:	Direct Sequence Spread Spectrum (DSSS) for 802.11b Orthogonal Frequency Division Multiplexing (OFDM) for 802.11g Frequency Hopping Spread Spectrum (FHSS) for Bluetooth module		
Antenna(s)	WLAN Module utilizes one antenna. PIFA Film Antennas: PN: SS-03-03-076, Amphenol KAE Co., Ltd PN: WDAN-S1SAT001-DF, Hon Hai Precision Ind. Co.,Ltd		
FCC Rule Parts	Frequency Range [MHz]	The Highest SAR Values [1g_mW/g]	Collocation SAR Values [1g_mW/g]
15.247	2412 - 2462	1.53	1.53

Testing has been carried out in accordance with:

**47CFR §2.1093** - Radiofrequency Radiation Exposure Evaluation: Portable Devices

**FCC OET Bulletin 65 (Edition 97-01), Supplement C (Edition 01-01)** - Evaluating Compliance with FCC Guidelines for Human Exposure to Radiofrequency Electromagnetic Fields

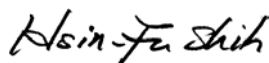
**RSS-102** - Evaluation Procedure for Mobile and Portable Radio Transmitters with Respect to Health Canada's Safety Code 6 for Exposure of Humans to Radio Frequency Fields

**IEEE 1528\_2003** - IEEE Recommended Practice for Determining the Peak Spatial-Average Specific Absorption Rate (SAR) in the Human Head from Wireless Communications Devices: Measurement Techniques

Note: The results documented in this report apply only to the tested sample, under the conditions and modes of operation as described herein. This document may not be altered or revised in any way unless done so by Compliance Certification Services and all revisions are duly noted in the revisions section. Any alteration of this document not carried out by Compliance Certification Services will constitute fraud and shall nullify the document. No part of this report may be used to claim product certification, approval, or endorsement by NVLAP, NIST, or any government agency.

Approved & Released For CCS By:

Tested By:




Hsin Fu Shih  
Senior Engineer  
Compliance Certification Services

Ninous Davoudi  
EMC Engineer  
Compliance Certification Services

TABLE OF CONTENTS

1	EQUIPMENT UNDER TEST (EUT) DESCRIPTION.....	5
2	FACILITIES AND ACCREDITATION .....	6
3	SYSTEM DESCRIPTION .....	7
3.1	COMPOSITION OF INGREDIENTS FOR TISSUE SIMULATING LIQUIDS .....	8
4	SIMULATING LIQUID PARAMETERS CHECK.....	9
4.1	SIMULATING LIQUID PARAMETER CHECK RESULT.....	10
5	SYSTEM PERFORMANCE CHECK.....	11
6	SAR MEASUREMENT PROCEDURE .....	12
6.1	DASY4 SAR MEASUREMENT PROCEDURE .....	13
7	PROCEDURE USED TO ESTABLISH TEST SIGNAL .....	14
8	SAR MEASUREMENT RESULTS.....	15
8.1	KAE ANTENNA.....	15
8.1.1	EDGE POSITION .....	15
8.1.2	LAP HELD POSITION.....	16
8.2	FOXCONN ANTENNA.....	17
8.2.1	EDGE POSITION .....	17
9	MEASUREMENT UNCERTAINTY .....	18
9.1	MEASUREMENT UNCERTAINTY FOR 300 MHZ – 3000 MHZ .....	18
10	EQUIPMENT LIST AND CALIBRATION.....	19
11	PHOTOS .....	20
12	ATTACHMENTS.....	24

**1 EQUIPMENT UNDER TEST (EUT) DESCRIPTION**

Notebook PC has a WLAN FCC ID: PPD-AR5BXB61 and collocated Bluetooth radio FCC ID: QDS-BRCM1018.	
Normal operation:	Lap-held position or underarm position
Duty cycle:	99% for both b and g modes
Antenna(s)	WLAN Module utilizes one antenna. PIFA Film Antennas: PN: SS-03-03-076, Amphenol KAE Co., Ltd PN: WDAN-S1SAT001-DF, Hon Hai Precision Ind Co.,Ltd
Power supply:	Standard Battery pack: Li-Ion Battery, 11.1V, 2600mAh

## 2 FACILITIES AND ACCREDITATION

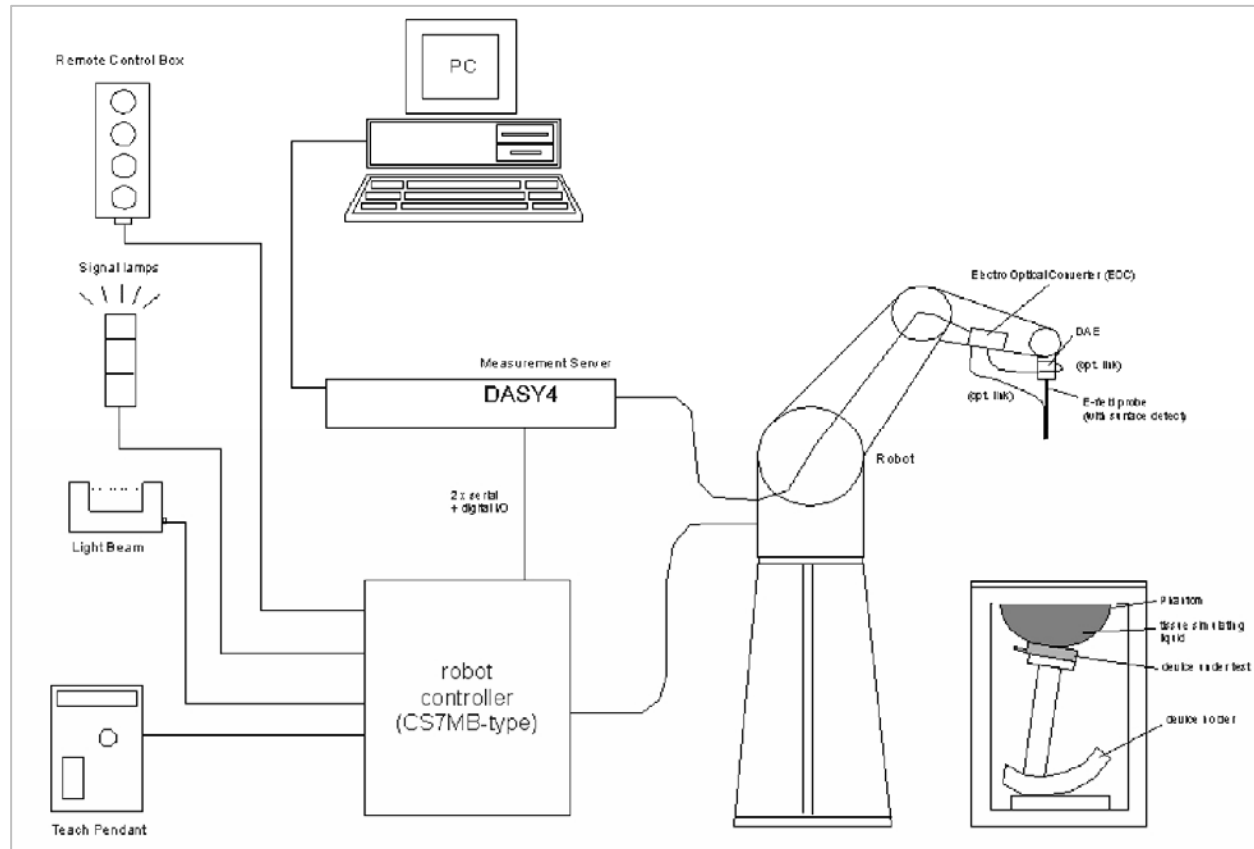
The test sites and measurement facilities used to collect data are located at 561F Monterey Road, Morgan Hill, California, USA. The sites are constructed in conformance with the requirements of ANSI C63.4, ANSI C63.7 and CISPR Publication 22. All receiving equipment conforms to CISPR Publication 16-1, "Radio Interference Measuring Apparatus and Measurement Methods."



CCS is accredited by NVLAP, Laboratory Code 200065-0. The full scope of accreditation can be viewed at <http://www.ccsemc.com>.

No part of this report may be used to claim product certification, approval, or endorsement by NVLAP, NIST, or any government agency.

### 3 SYSTEM DESCRIPTION



**The DASY4 system for performing compliance tests consists of the following items:**

- A standard high precision 6-axis robot (Stäubli RX family) with controller, teach pendant and software. An arm extension for accommodating the data acquisition electronics (DAE).
- A dosimetric probe, i.e., an isotropic E-field probe optimized and calibrated for usage in tissue simulating liquid. The probe is equipped with an optical surface detector system.
- A data acquisition electronics (DAE) which performs the signal amplification, signal multiplexing, AD-conversion, offset measurements, mechanical surface detection, collision detection, etc. The unit is battery powered with standard or rechargeable batteries. The signal is optically transmitted to the EOC.
- The function of the measurement server is to perform the time critical tasks such as signal filtering, control of the robot operation and fast movement interrupts.
- A probe alignment unit which improves the (absolute) accuracy of the probe positioning.
- A computer operating Windows 2000 or Windows XP.
- DASY4 software.
- Remote controls with teach pendant and additional circuitry for robot safety such as warning lamps, etc.
- The SAM twin phantom enabling testing left-hand and right-hand usage.
- The device holder for handheld mobile phones.
- Tissue simulating liquid mixed according to the given recipes.
- Validation dipole kits allowing to validate the proper functioning of the system.

### 3.1 COMPOSITION OF INGREDIENTS FOR TISSUE SIMULATIG LIQUIDS

The following tissue formulations are provided for reference only as some of the parameters have not been thoroughly verified. The composition of ingredients may be modified accordingly to achieve the desired target tissue parameters required for routine SAR evaluation.

Ingredients (% by weight)	Frequency (MHz)									
	450		835		915		1900		2450	
Tissue Type	Head	Body	Head	Body	Head	Body	Head	Body	Head	Body
Water	38.56	51.16	41.45	52.4	41.05	56.0	54.9	40.4	62.7	73.2
Salt (NaCl)	3.95	1.49	1.45	1.4	1.35	0.76	0.18	0.5	0.5	0.04
Sugar	56.32	46.78	56.0	45.0	56.5	41.76	0.0	58.0	0.0	0.0
HEC	0.98	0.52	1.0	1.0	1.0	1.21	0.0	1.0	0.0	0.0
Bactericide	0.19	0.05	0.1	0.1	0.1	0.27	0.0	0.1	0.0	0.0
Triton X-100	0.0	0.0	0.0	0.0	0.0	0.0	0.0	0.0	36.8	0.0
DGBE	0.0	0.0	0.0	0.0	0.0	0.0	44.92	0.0	0.0	26.7
Dielectric Constant	43.42	58.0	42.54	56.1	42.0	56.8	39.9	54.0	39.8	52.5
Conductivity (S/m)	0.85	0.83	0.91	0.95	1.0	1.07	1.42	1.45	1.88	1.78

Salt: 99+% Pure Sodium Chloride

Sugar: 98+% Pure Sucrose

Water: De-ionized, 16 MΩ+ resistivity

HEC: Hydroxyethyl Cellulose

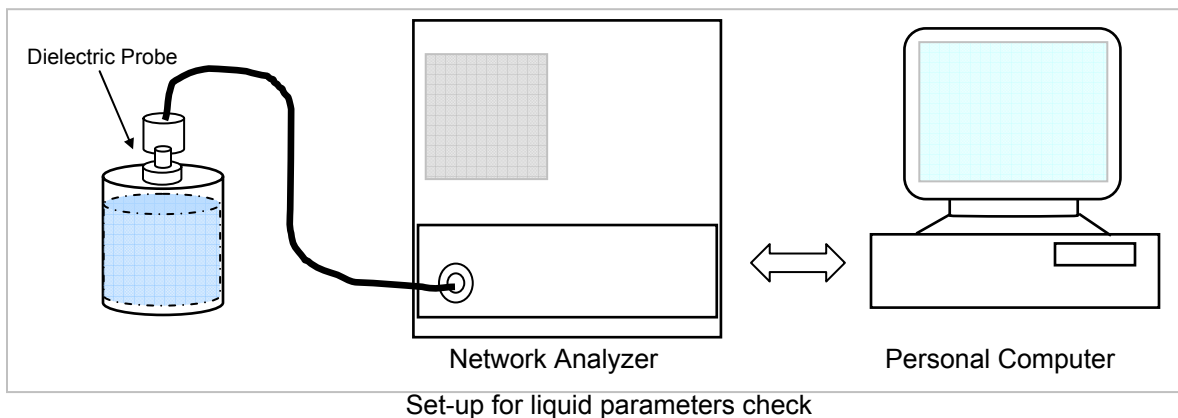
DGBE: 99+% Di(ethylene glycol) butyl ether, [2-(2-butoxyethoxy)ethanol]

Triton X-100 (ultra pure): Polyethylene glycol mono [4-(1,1, 3, 3-tetramethylbutyl)phenyl]ether



#### 4 SIMULATING LIQUID PARAMETERS CHECK

The simulating liquids should be checked at the beginning of a series of SAR measurements to determine if the dielectric parameters are within the tolerances of the specified target values. The relative permittivity and conductivity of the tissue material should be within  $\pm 5\%$  of the values given in the table below.



#### Reference Values of Tissue Dielectric Parameters for Head and Body Phantom (for 150 – 3000 MHz and 5800 MHz)

The head tissue dielectric parameters recommended by the IEEE SCC-34/SC-2 in IEEE Standard 1528 have been incorporated in the following table. These head parameters are derived from planar layer models simulating the highest expected SAR for the dielectric properties and tissue thickness variations in a human head. Other head and body tissue parameters that have not been specified in P1528 are derived from the tissue dielectric parameters computed from the 4-Cole-Cole equations and extrapolated according to the head parameters specified in IEEE Standard 1528.

Target Frequency (MHz)	Head		Body	
	$\epsilon_r$	$\sigma$ (S/m)	$\epsilon_r$	$\sigma$ (S/m)
150	52.3	0.76	61.9	0.80
300	45.3	0.87	58.2	0.92
450	43.5	0.87	56.7	0.94
835	41.5	0.90	55.2	0.97
900	41.5	0.97	55.0	1.05
915	41.5	0.98	55.0	1.06
1450	40.5	1.20	54.0	1.30
1610	40.3	1.29	53.8	1.40
1800 – 2000	40.0	1.40	53.3	1.52
2450	39.2	1.80	52.7	1.95
3000	38.5	2.40	52.0	2.73
5800	35.3	5.27	48.2	6.00

( $\epsilon_r$  = relative permittivity,  $\sigma$  = conductivity and  $\rho = 1000 \text{ kg/m}^3$ )

**4.1 SIMULATING LIQUID PARAMETER CHECK RESULT**

Simulating Liquid Dielectric Parameter Check Result @ Muscle 2450 MHz

Room Ambient Temperature = 23°C; Relative humidity = 50%

Measured by: Ninous Davoudi

Simulating Liquid			Parameters		Measured	Target	Deviation (%)	Limit (%)	
f (MHz)	Temp. (°C)	Depth (cm)							
2450	22	15	e'	52.2156	Relative Permittivity ( $\epsilon_r$ ):	52.2156	52.7	-0.92	± 5
			e"	14.8259	Conductivity ( $\sigma$ ):	2.02072	1.95	3.63	± 5

Liquid Check

Ambient temperature: 23.0 deg. C; Liquid temperature: 22.0 deg C

June 29, 2006 09:15 AM

Frequency	e'	e"
2400000000.	52.3738	14.6182
2410000000.	52.3409	14.6463
2420000000.	52.3013	14.6949
2430000000.	52.2704	14.7371
2440000000.	52.2499	14.7742
2450000000.	52.2156	14.8259
2460000000.	52.1860	14.8533
2470000000.	52.1539	14.9190
2480000000.	52.1008	14.9553
2490000000.	52.0641	14.9942
2500000000.	52.0114	15.0432

The conductivity ( $\sigma$ ) can be given as:

$$\sigma = \omega \epsilon_0 \epsilon'' = 2 \pi f \epsilon_0 \epsilon''$$

where  $f = \text{target } f * 10^6$ 

$$\epsilon_0 = 8.854 * 10^{-12}$$

## 5 SYSTEM PERFORMANCE CHECK

The system performance check is performed prior to any usage of the system in order to guarantee reproducible results. The system performance check verifies that the system operates within its specifications of  $\pm 10\%$ .

### System Performance Check Measurement Conditions

- The measurements were performed in the flat section of the SAM twin phantom filled with Body simulating liquid of the following parameters.
- The DASY4 system with an Isotropic E-Field Probe EX3DV3-SN: 3531 was used for the measurements.
- The dipole was mounted on the small tripod so that the dipole feed point was positioned below the center marking of the flat phantom section and the dipole was oriented parallel to the body axis (the long side of the phantom). The standard measuring distance was 10 mm (above 1 GHz) and 15 mm (below 1 GHz) from dipole center to the simulating liquid surface.
- The coarse grid with a grid spacing of 15 mm was aligned with the dipole.  
For 5 GHz band - The coarse grid with a grid spacing of 10 mm was aligned with the dipole.
- Special 5 x 5 x 7 fine cube was chosen for cube integration(dx=dy=7.5mm; dz=5mm).  
For 5 GHz band - Special 8x8x8 fine cube was chosen for cube integration(dx=dy=4.3mm; dz=3mm)
- Distance between probe sensors and phantom surface was set to 4 mm.  
For 5 GHz band - Distance between probe sensors and phantom surface was set to 2.0mm
- The dipole input power (forward power) was 250 mW $\pm 3\%$ .
- The results are normalized to 1 W input power.

### Reference SAR Values for body-tissue

In the table below, the numerical reference SAR values of a SPEAG validation dipoles placed below the flat phantom filled with body-tissue simulating liquid are given. The reference SAR values were calculated using the finite-difference time-domain method and the geometry parameters.

Dipole Type	Distance (mm)	Frequency (MHz)	SAR (1g) [W/kg]	SAR (10g) [W/kg]	SAR (peak) [W/kg]
D450V2	15	450	5.01	3.36	7.22
D835V2	15	835	9.71	6.38	14.1
D900V2	15	900	11.1	7.17	16.3
D1450V2	10	1450	29.6	16.6	49.8
D1800V2	10	1800	38.5	20.3	67.5
D1900V2	10	1900	39.8	20.8	69.6
D2000V2	10	2000	40.9	21.2	71.5
D2450V2	10	2450	51.2	23.7	97.6

Note: All SAR values normalized to 1 W forward power.

### System Validation Dipole: D2450V2 SN: 706

Date: June 29, 2006

Room Ambient Temperature = 23°C; Relative humidity = 50%

Measured by: Ninous Davoudi

Body Simulating Liquid			SAR (mW/g)		Normalized to 1 W	Target	Deviation (%)	Limit (%)
f (MHz)	Temp. (°C)	Depth (cm)						
2450	22	15	1g	12.60	50.4	51.2	-1.56	$\pm 10$
			10g	5.81	23.24	23.7	-1.94	$\pm 10$

## 6 SAR MEASUREMENT PROCEDURE

A summary of the procedure follows:

- a) A measurement of the SAR value at a fixed location is used as a reference value for assessing the power drop of the EUT. The SAR at this point is measured at the start of the test, and then again at the end of the test.
- b) The SAR distribution at the exposed flat section of the flat phantom is measured at a distance of 4 mm from the inner surface of the shell. The area covers the entire dimension of the EUT and the horizontal grid spacing is 15 mm x 15 mm. Based on this data, the area of the maximum absorption is determined by Spline interpolation. The first Area Scan covers the entire dimension of the EUT to ensure that the hotspot was correctly identified.

For 5 GHz band - The SAR distribution at the exposed flat section of the flat phantom is measured at a distance of 2.0 mm from the inner surface of the shell. The area covers the entire dimension of the EUT and the horizontal grid spacing is 10 mm x 10 mm. Based on this data, the area of the maximum absorption is determined by Spline interpolation. The first Area Scan covers the entire dimension of the EUT to ensure that the hotspot was correctly identified.

- c) Around this point, a volume of X=Y= 30 and Z=21 mm is assessed by measuring 5 x 5 x 7 mm points. On the basis of this data set, the spatial peak SAR value is evaluated with the following procedure:

For 5 GHz band - Around this point, a volume of X=Y=Z=30 mm is assessed by measuring 8 x 8 x 8 mm points. On the basis of this data set, the spatial peak SAR value is evaluated with the following procedure:

- (i) The data at the surface are extrapolated, since the centre of the dipoles is 1.2 mm away from the tip of the probe and the distance between the surface and the lowest measuring point is 1.3 mm. The extrapolation is based on a least square algorithm. A polynomial of the fourth order is calculated through the points in z-axes. This polynomial is then used to evaluate the points between the surface and the probe tip.
- (ii) The maximum interpolated value is searched with a straightforward algorithm. Around this maximum the SAR values averaged over the spatial volumes (1 g and 10 g) are computed using the 3D-Spline interpolation algorithm. The 3D-Spline is composed of three one-dimensional splines with the "Not a knot"- condition (in x, y and z-direction). The volume is integrated with the trapezoidal – algorithm. One thousand points (10 x 10 x 10) are interpolated to calculate the averages.
- (iii) All neighbouring volumes are evaluated until no neighbouring volume with a higher average value is found.
- (iv) The SAR value at the same location as in Step (a) is again measured to evaluate the actual power drift.

## 6.1 DASY4 SAR MEASUREMENT PROCEDURE

### Step 1: Power Reference Measurement

The Power Reference Measurement and Power Drift Measurements are for monitoring the power drift of the device under test in the batch process. The Minimum distance of probe sensors to surface determines the closest measurement point to phantom surface. The minimum distance of probe sensors to surface is 2.1 mm. This distance cannot be smaller than the Distance of sensor calibration points to probe tip as defined in the probe properties (for example, 1.2 mm for an EX3DV3 probe type).

### Step 2: Area Scan

The Area Scan is used as a fast scan in two dimensions to find the area of high field values, before doing a fine measurement around the hot spot. The sophisticated interpolation routines implemented in DASY4 software can find the maximum locations even in relatively coarse grids. When an Area Scan has measured all reachable points, it computes the field maximal found in the scanned area, within a range of the global maximum. The range (in dB) is specified in the standards for compliance testing. For example, a 2 dB range is required in IEEE Standard 1528, EN 50361 and IEC 62209 standards, whereby 3 dB is a requirement when compliance is assessed in accordance with the ARIB standard (Japan). If only one Zoom Scan follows the Area Scan, then only the absolute maximum will be taken as reference. For cases where multiple maximums are detected, the number of Zoom Scans has to be increased accordingly.

### Step 3: Zoom Scan

Zoom Scans are used to assess the peak spatial SAR values within a cubic averaging volume containing 1 g and 10 g of simulated tissue. The Zoom Scan measures 5 x 5 x 7 points within a cube whose base faces are centered on the maxima found in a preceding area scan job within the same procedure. When the measurement is done, the Zoom Scan evaluates the averaged SAR for 1 g and 10 g and displays these values next to the job's label.

For 5 GHz band – Same as above except the Zoom Scan measures 8 x 8 x 8 points.

### Step 4: Power drift measurement

The Power Drift Measurement measures the field at the same location as the most recent power reference measurement within the same procedure, and with the same settings. The Power Drift Measurement gives the field difference in dB from the reading conducted within the last Power Reference Measurement. This allows a user to monitor the power drift of the device under test within a batch process. The measurement procedure is the same as Step 1.

### Step 5: Z-Scan

The Z Scan measures points along a vertical straight line. The line runs along the Z-axis of a one-dimensional grid. In order to get a reasonable extrapolation, the extrapolated distance should not be larger than the step size in Z-direction.

## 7 PROCEDURE USED TO ESTABLISH TEST SIGNAL

The following procedures had been used to prepare the EUT for the SAR test.

The client provided a special driver and program, Art, which enables a user to control the frequency and output power of the module.

The cable assembly insertion loss of 20.75 dB (including 20.55 dB and 0.2 dB connectors) was entered as an offset in the power meter to allow for direct reading of power.

### **802.11b Mode**

Channel	Frequency (MHz)	Power (dBm)
Low	2412	15.4
Middle	2437	17.4
High	2462	17.5

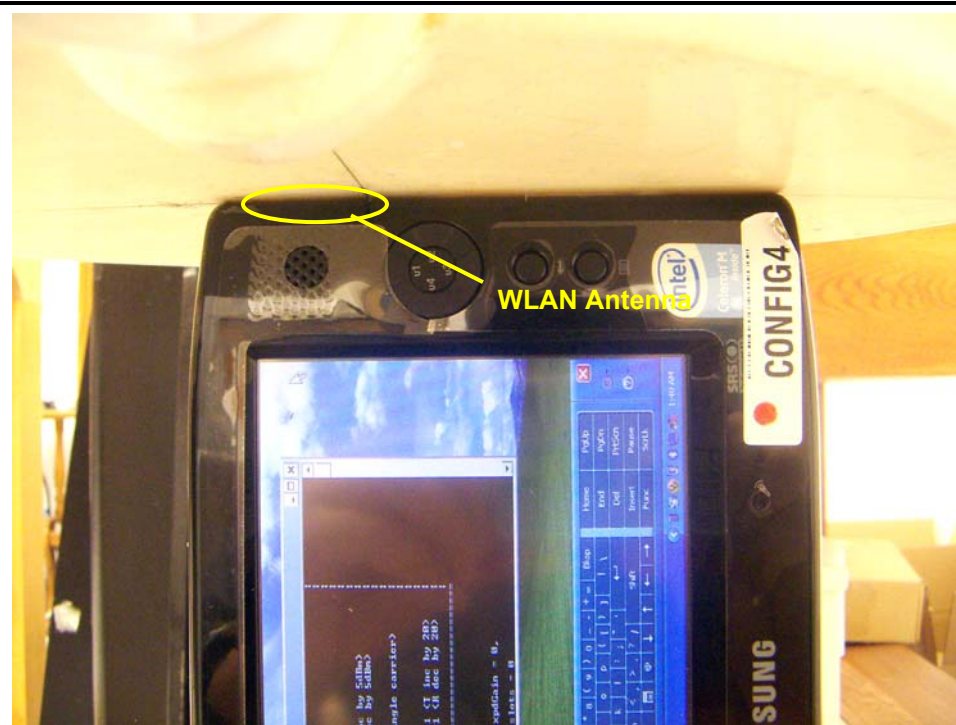
### **802.11g Mode**

Channel	Frequency (MHz)	Power (dBm)
Low	2412	15.5
Middle	2437	17.0
High	2462	16.5

## 8 SAR MEASUREMENT RESULTS

### 8.1 KAE ANTENNA

#### 8.1.1 EDGE POSITION



#### 802.11b (1Mbps)

Channel	f (MHz)	Measured SAR 1g (mW/g)	Power Drift (dB)	Extrapolated <sup>1)</sup> SAR 1g (mW/g)
1	2412	1.10	-0.041	1.11
6	2437	1.52	0.000	1.52
11	2462	1.51	-0.022	1.52

#### 802.11g (6 Mbps)

Channel	f (MHz)	Measured SAR 1g (mW/g)	Power Drift (dB)	Extrapolated <sup>1)</sup> SAR 1g (mW/g)
1	2412	1.17	0.000	1.17
6	2437	1.53	0.000	1.53
11	2462	1.20	-0.020	1.21
6 <sup>4)</sup>	2462	1.53	0.000	1.53

Notes:

- 1) The exact method of extrapolation is  $\text{Measured SAR} \times 10^{(-\text{drift}/10)}$ . The SAR reported at the end of the measurement process by the DASY4 system can be scaled up by the Power drift to determine the SAR at the beginning of the measurement process.
- 2) The SAR measured at the middle channel for this configuration is at least 3 dB lower (0.8 mW/g) than SAR limit (1.6 mW/g), thus testing at low & high channel is optional.
- 3) Please see attachments for the detailed measurement data and plots showing the maximum SAR location of the EUT.
- 4) Collocation with Broadcom Bluetooth module FCC ID: QDS-BRCM1018.

**8.1.2 LAP HELD POSITION****WLAN Antenna****802.11b (1Mbps)**

Channel	f (MHz)	Measured SAR 1g (mW/g)	Power Drift (dB)	Extrapolated <sup>1)</sup> SAR 1g (mW/g)
1	2412	0.47	0.000	0.47
6	2437			
11	2462			

**802.11g (6 Mbps)**

Channel	f (MHz)	Measured SAR 1g (mW/g)	Power Drift (dB)	Extrapolated <sup>1)</sup> SAR 1g (mW/g)
1	2412	0.42	-0.201	0.44
6	2437			
11	2462			

**Notes:**

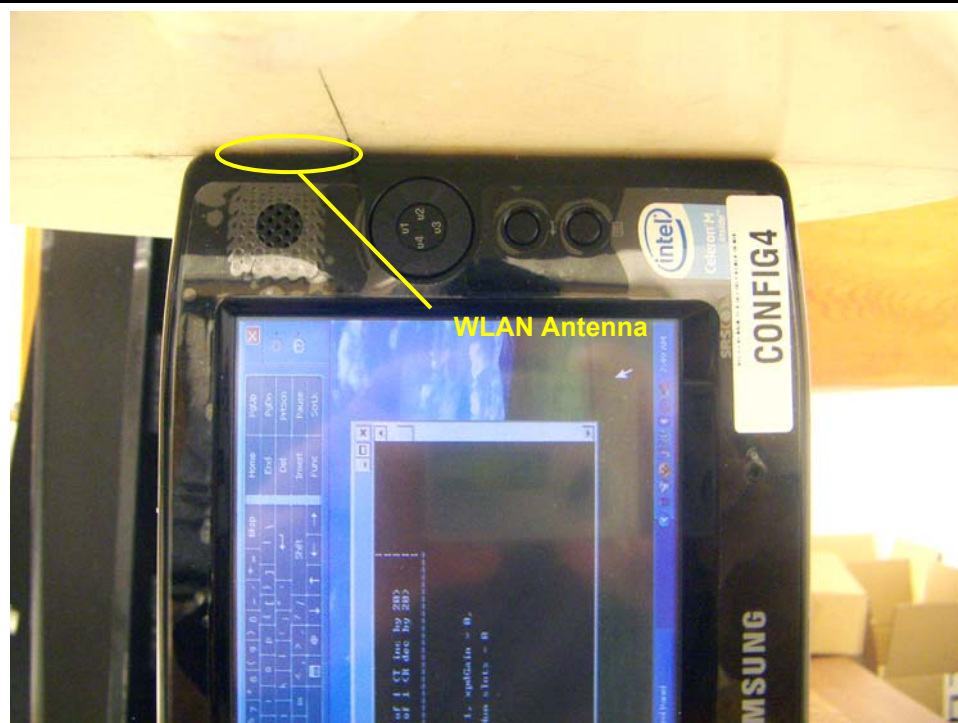
- 1) The exact method of extrapolation is  $\text{Measured SAR} \times 10^{(-\text{drift}/10)}$ . The SAR reported at the end of the measurement process by the DASY4 system can be scaled up by the Power drift to determine the SAR at the beginning of the measurement process.
- 2) The SAR measured at the middle channel for this configuration is at least 3 dB lower (0.8 mW/g) than SAR limit (1.6 mW/g), thus testing at low & high channel is optional.
- 3) Please see attachments for the detailed measurement data and plots showing the maximum SAR location of the EUT.



## 8.2 FOXCONN ANTENNA

Spot check is performed based on the worst case from KAE antenna. The KAE produces worse SAR.

### 8.2.1 EDGE POSITION



#### 802.11b (1Mbps)

Channel	f (MHz)	Measured SAR 1g (mW/g)	Power Drift (dB)	Extrapolated <sup>1)</sup> SAR 1g (mW/g)
1	2412	0.763	-0.025	0.767
6	2437			
11	2462			

#### 802.11g (6 Mbps)

Channel	f (MHz)	Measured SAR 1g (mW/g)	Power Drift (dB)	Extrapolated <sup>1)</sup> SAR 1g (mW/g)
1	2412	0.740	0.000	0.740
6	2437			
11	2462			

#### Notes:

- 1) The exact method of extrapolation is  $\text{Measured SAR} \times 10^{(-\text{drift}/10)}$ . The SAR reported at the end of the measurement process by the DASY4 system can be scaled up by the Power drift to determine the SAR at the beginning of the measurement process.
- 2) The SAR measured at the middle channel for this configuration is at least 3 dB lower (0.8 mW/g) than SAR limit (1.6 mW/g), thus testing at low & high channel is optional.
- 3) Please see attachments for the detailed measurement data and plots showing the maximum SAR location of the EUT.

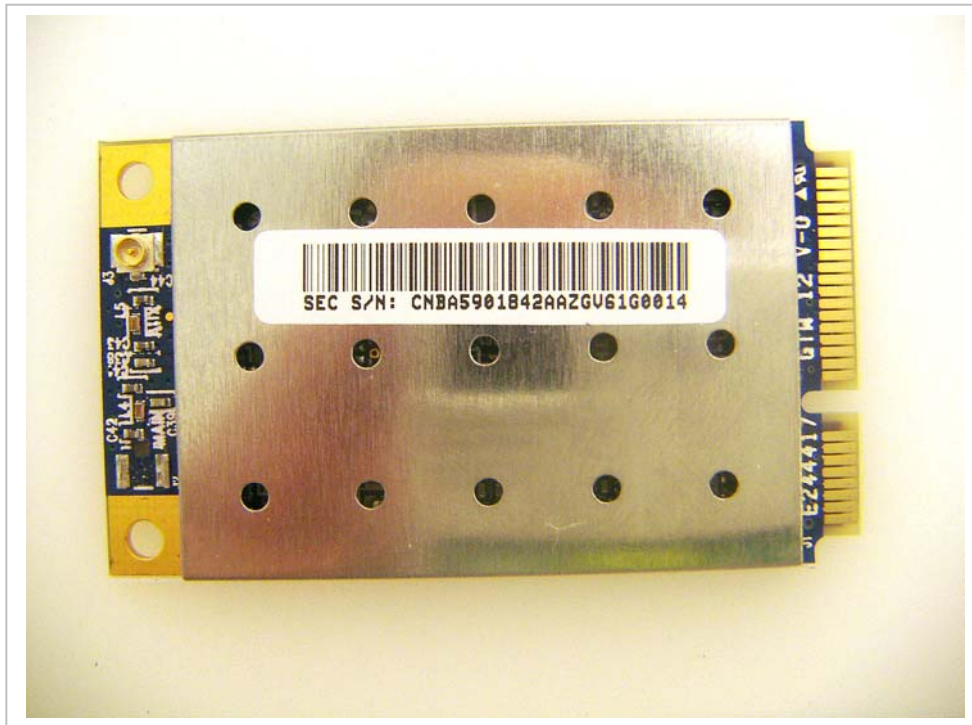
## 9 MEASUREMENT UNCERTAINTY

### 9.1 MEASUREMENT UNCERTAINTY FOR 300 MHz – 3000 MHz

Uncertainty component	Tol. (±%)	Probe Dist.	Div.	Ci (1g)	Ci (10g)	Std. Unc.(±%)	
						Ui (1g)	Ui(10g)
Measurement System							
Probe Calibration	4.80	N	1	1	1	4.80	4.80
Axial Isotropy	4.70	R	1.732	0.707	0.707	1.92	1.92
Hemispherical Isotropy	9.60	R	1.732	0.707	0.707	3.92	3.92
Boundary Effects	1.00	R	1.732	1	1	0.58	0.58
Linearity	4.70	R	1.732	1	1	2.71	2.71
System Detection Limits	1.00	R	1.732	1	1	0.58	0.58
Readout Electronics	1.00	N	1	1	1	1.00	1.00
Response Time	0.80	R	1.732	1	1	0.46	0.46
Integration Time	2.60	R	1.732	1	1	1.50	1.50
RF Ambient Conditions - Noise	1.59	R	1.732	1	1	0.92	0.92
RF Ambient Conditions - Reflections	0.00	R	1.732	1	1	0.00	0.00
Probe Positioner Mechanical Tolerance	0.40	R	1.732	1	1	0.23	0.23
Probe Positioning With Respect to Phantom Shell	2.90	R	1.732	1	1	1.67	1.67
Extrapolation, interpolation, and integration algorithms for max. SAR evaluation	3.90	R	1.732	1	1	2.25	2.25
Test sample Related							
Test Sample Positioning	1.10	N	1	1	1	1.10	1.10
Device Holder Uncertainty	3.60	N	1	1	1	3.60	3.60
Power and SAR Drift Measurement	5.00	R	1.732	1	1	2.89	2.89
Phantom and Tissue Parameters							
Phantom Uncertainty	4.00	R	1.732	1	1	2.31	2.31
Liquid Conductivity - Target	5.00	R	1.732	0.64	0.43	1.85	1.24
Liquid Conductivity - Meas.	8.60	N	1	0.64	0.43	5.50	3.70
Liquid Permittivity - Target	5.00	R	1.732	0.6	0.49	1.73	1.41
Liquid Permittivity - Meas.	3.30	N	1	0.6	0.49	1.98	1.62
Combined Standard Uncertainty	RSS					11.44	10.49
Expanded Uncertainty (95% Confidence Interval)	K=2					22.87	20.98
Notesfor table							
1. Tol. - tolerance in influence quaity							
2. N - Nomal							
3. R - Rectangular							
4. Div. - Divisor used to obtain standard uncertainty							
5. Ci - is te sensitivity coefficient							

**10 EQUIPMENT LIST AND CALIBRATION**

<u>Name of Equipment</u>	<u>Manufacturer</u>	<u>Type/Model</u>	<u>Serial Number</u>	<u>Cal. Due date</u>
Robot - Six Axes	Stäubli	RX90BL	N/A	N/A
Robot Remote Control	Stäubli	CS7MB	3403-91535	N/A
DASY4 Measurement Server	SPEAG	SEUMS001BA	1041	N/A
Probe Alignment Unit	SPEAG	LB (V2)	261	N/A
S-Parameter Network Analyzer	Agilent	8753ES-6	US39173569	2/9/07
Electronic Probe kit	Hewlett Packard	85070C	N/A	N/A
E-Field Probe	SPEAG	EX3DV4	3552	5/30/07
Thermometer	ERTCO	639-1S	1718	1/11/07
SAM Phantom (SAM1)	SPEAG	TP-1185	QD000P40CA	N/A
SAM Phantom (SAM2)	SPEAG	TP-1015	N/A	N/A
Data Acquisition Electronics	SPEAG	DAE4	558	1/20/07
System Validation Dipole	SPEAG	D2450V2	706	4/27/08
Power Meter	Giga-tronics	8651A	8651404	12/27/06
Power Sensor	Giga-tronics	80701A	1834588	12/27/07
Amplifier	Mini-Circuits	ZHL-42W	D072701-5	N/A
Radio Communication Tester	Rohde & Schwarz	CMU 200	838114/032	3/21/07
Simulating Liquid	CCS	M2450	N/A	Within 24 hrs of first test

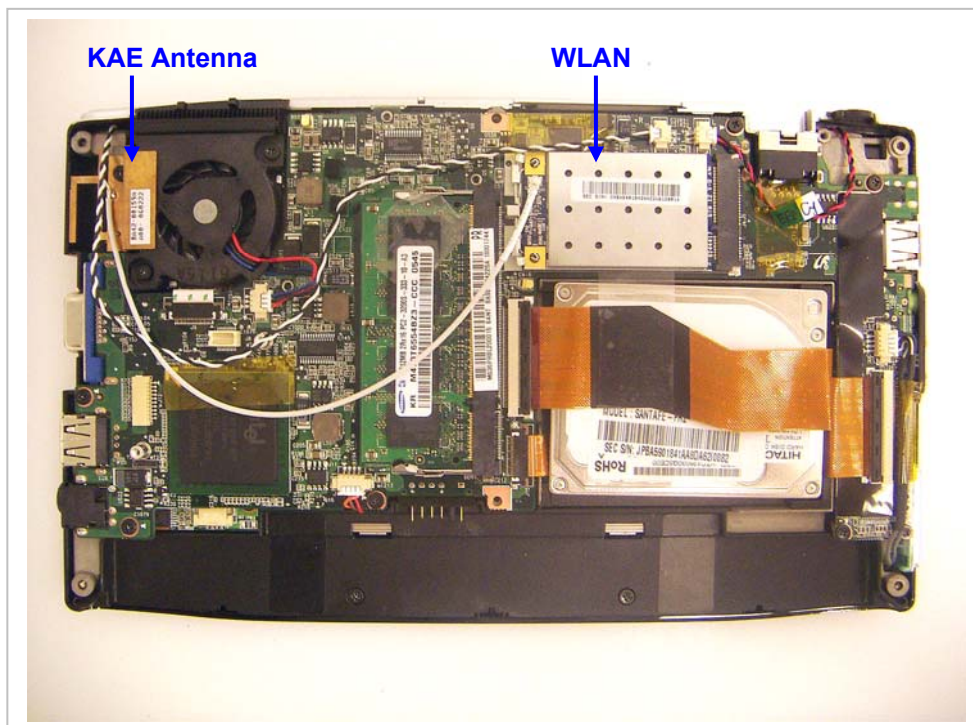
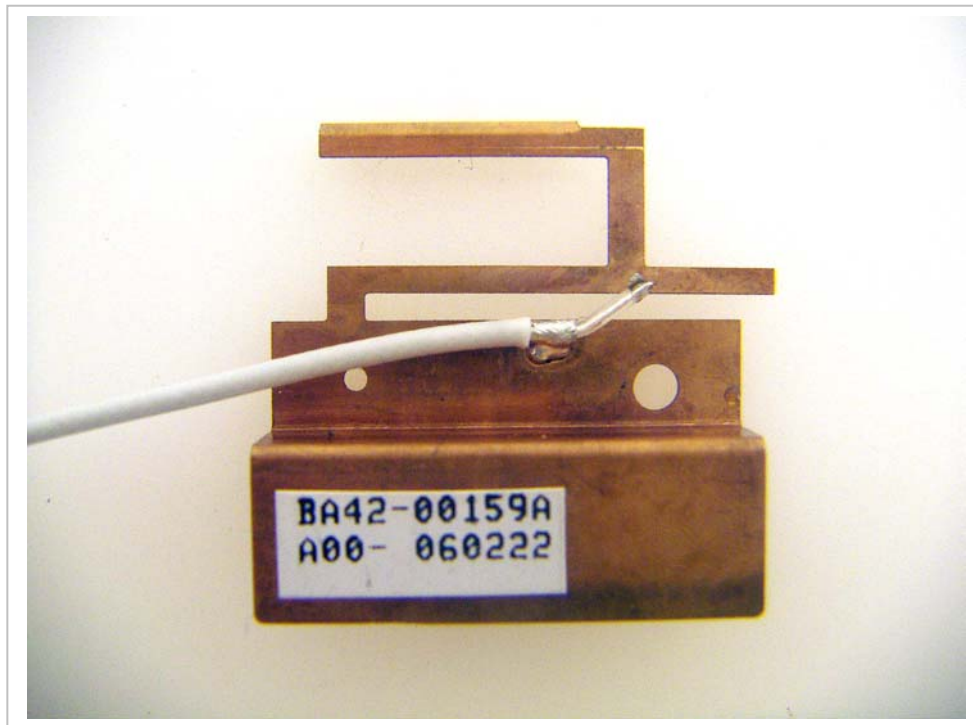
**11 PHOTOS****WLAN**

## Notebook PC

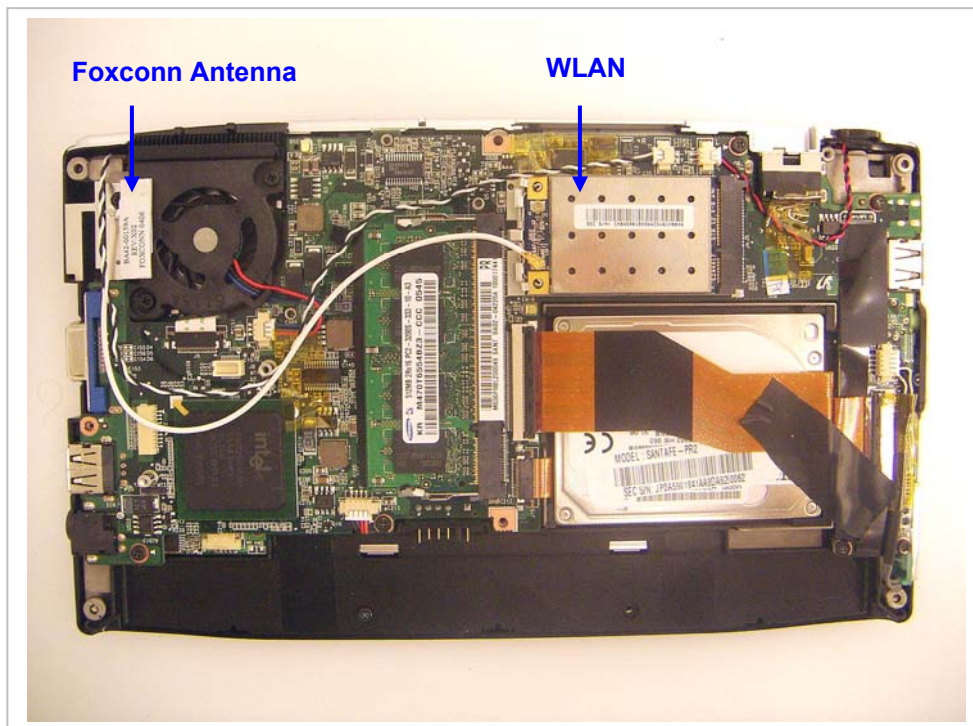
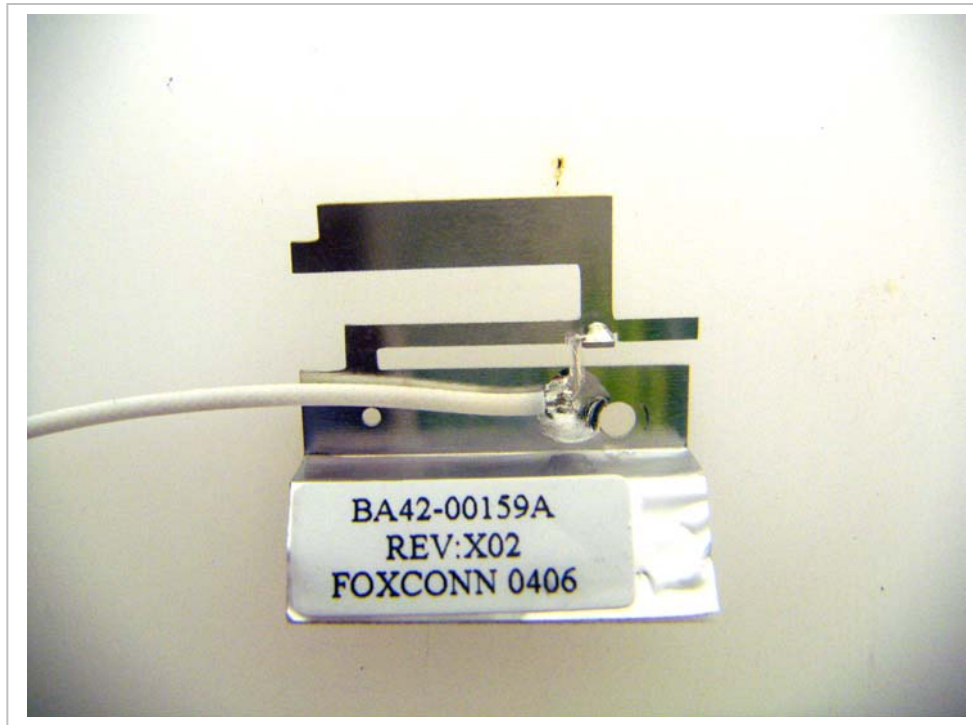




## KAE Antenna and EUT Location



## Foxconn Antenna and EUT Location



**12 ATTACHMENTS**

<b>No.</b>	<b>Contents</b>	<b>No. Of Pages</b>
1	System Performance Check Plots	2
2	SAR Test Plots	12
3	Certificate of E-Field Probe - EXDV4SN3552	10
4	Certificate of System Validation Dipole - D2450 SN:706	9

**End of Report**