

QUICK START GUIDE

EF-KN970

LED Cover

Printed in Korea
A00694 Rev.1.0
USA Type 01/2019

SAMSUNG

Using the LED window

Viewing incoming calls

When your mobile device is receiving a call, an LED image will appear on the LED window (b).

Using the rear camera

When you take a photo with the mobile device's rear camera after setting up the timer feature, a countdown timer will appear on the LED window (b).

LED settings

You can adjust the settings of the LED Cover. You can also turn the LED on or off manually.

On your mobile device, tap **Settings** → **Advanced features** → **Accessories**, and configure the settings as you want.

You can also use the LED Cover app that appears when you attach the LED Cover to the mobile device.

English

Copyright © 2019 Samsung Electronics America, Inc.

Other marks are the property of their respective owners.

- Please read this guide before using the device to ensure safe and proper use.
- Images may differ in appearance from the actual product. Content is subject to change without prior notice. Visit www.samsung.com to view device information, the latest guide, and more.
- Before using the LED Cover, make sure it is compatible with your device.
- Verify that the NFC function is working properly before using the device with the LED functions or Theme Curation Service feature active.
- If your device is running Mobile Device Management (MDM) or is located near a metallic object, the NFC function may not work properly.
- Your consumer rights are governed by the law of the country in which you purchased the product. Please contact your service provider for more information.

Safety information

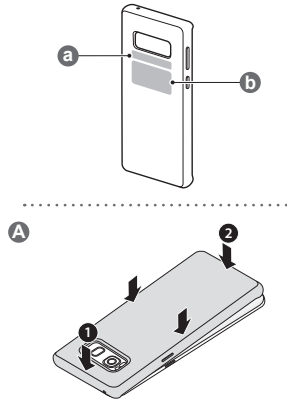
Read all safety information before using the device to ensure safe and proper use. To view the full safety information, refer to the Samsung website.

Use only charging devices that are approved by Samsung. Samsung charging devices are designed for your device to maximize battery life. Using other charging devices may void your warranty and may cause damage

Do not touch the device with wet hands

Do not drop or cause an impact to the charger or the device

The device can be used in locations with an ambient temperature of 0 °C / 32 °F to 35 °C / 95 °F. You can store the device at an ambient temperature of -20 °C / -4 °F to 50 °C / 122 °F. Using or storing the device outside of the recommended temperature ranges may damage the device



Device layout

a	NFC antenna	b	LED window
---	-------------	---	------------

Using the LED Cover

You can see whether the mobile device has received a notification, such as a new message, through the LED Cover.

Attach the LED Cover to the back of your mobile device (A).

When the mobile device receives notifications or is flipped to the back, the whole LED Cover will light up.



- The LED Cover does not work while wireless charging.
- Remove the cover for optimal Wireless PowerShare results.

Do not allow children or animals to chew or suck the device

Do not disassemble, modify, or repair your device

FCC Part 15.19

This device complies with part 15 of the FCC Rules. Operation is subject to the following two conditions: (1) This device may not cause harmful interference, and (2) this device must accept any interference received, including interference that may cause undesired operation.

FCC Part 15.21

Any changes or modifications (including the antennas) to this device that are not expressly approved by the manufacturer may void the user's authority to operate the equipment.

Samsung Mobile Products and Recycling

Samsung cares for the environment and encourages its customers to properly dispose of Devices and Samsung accessories in accordance with local regulations. In some areas, disposal of these items in household or business trash may be prohibited. Dispose of other unwanted electronics through an approved recycler. To find the nearest recycling location, go to our website: www.samsung.com/recyclingdirect or call 1-877-278-0799.

Samsung Electronics America, Inc

85 Challenger Road,
Ridgefield Park, New Jersey, 07660
Phone: 1-800-SAMSUNG (726-7864)