

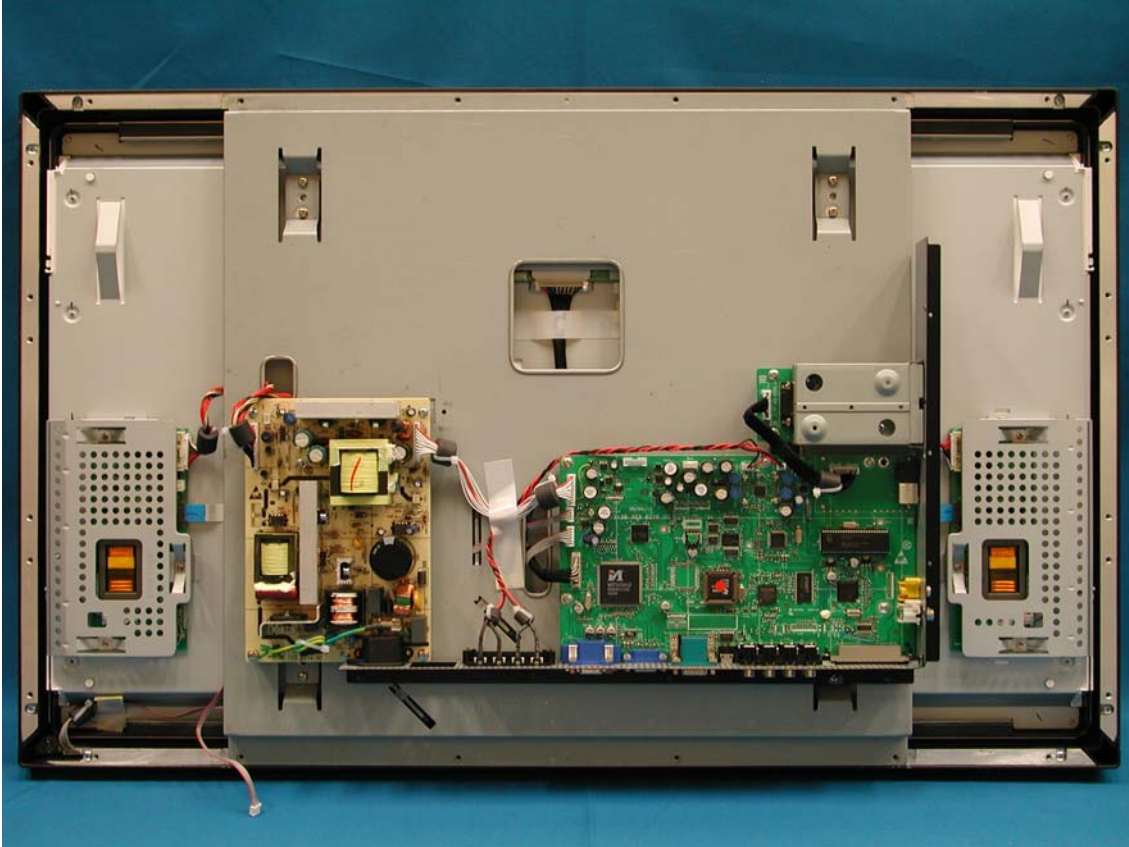
Label



Rear View w/o Base



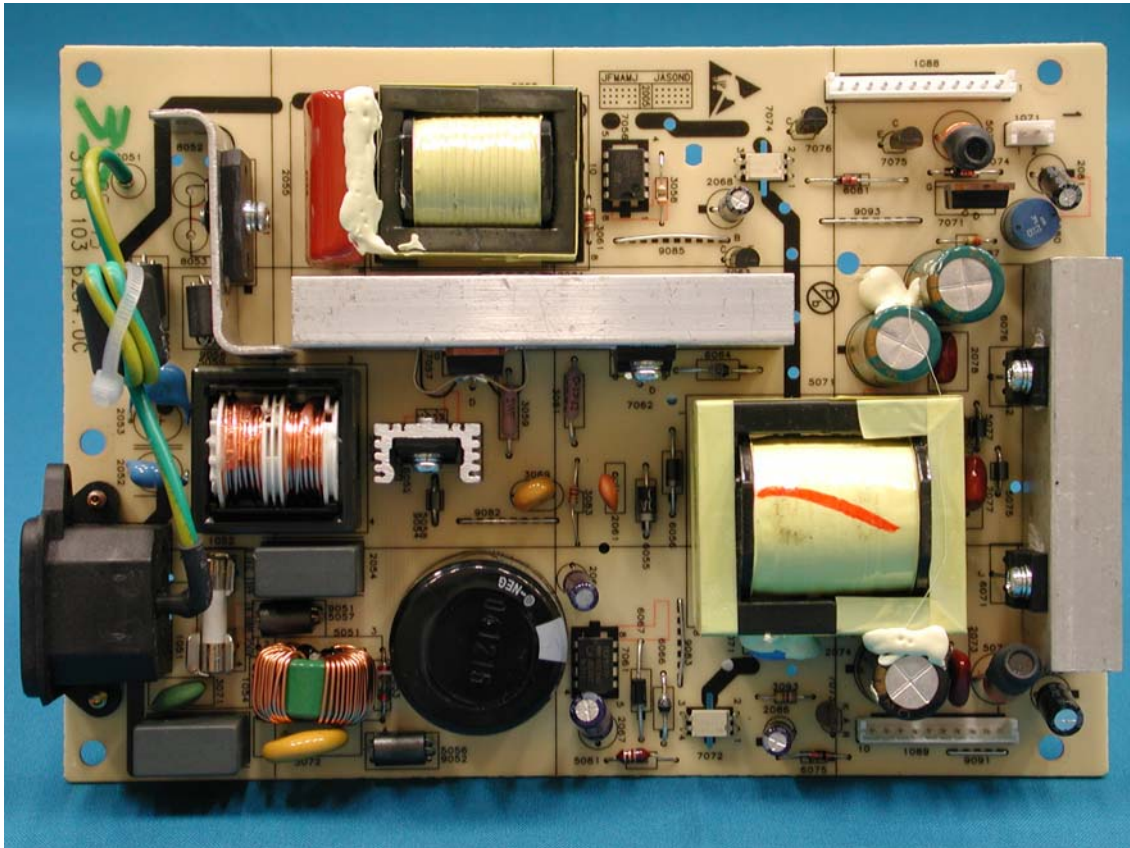
Rear View w/o Back Cover



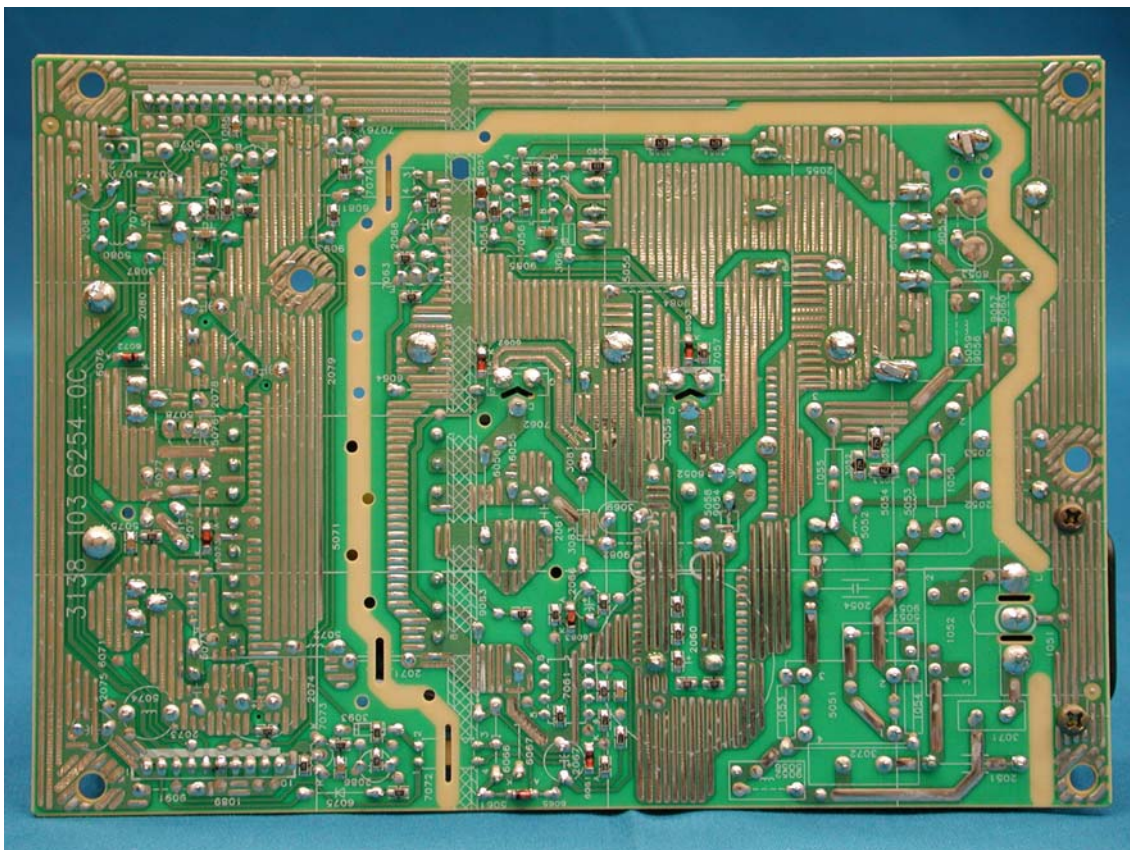
Shielding Cover



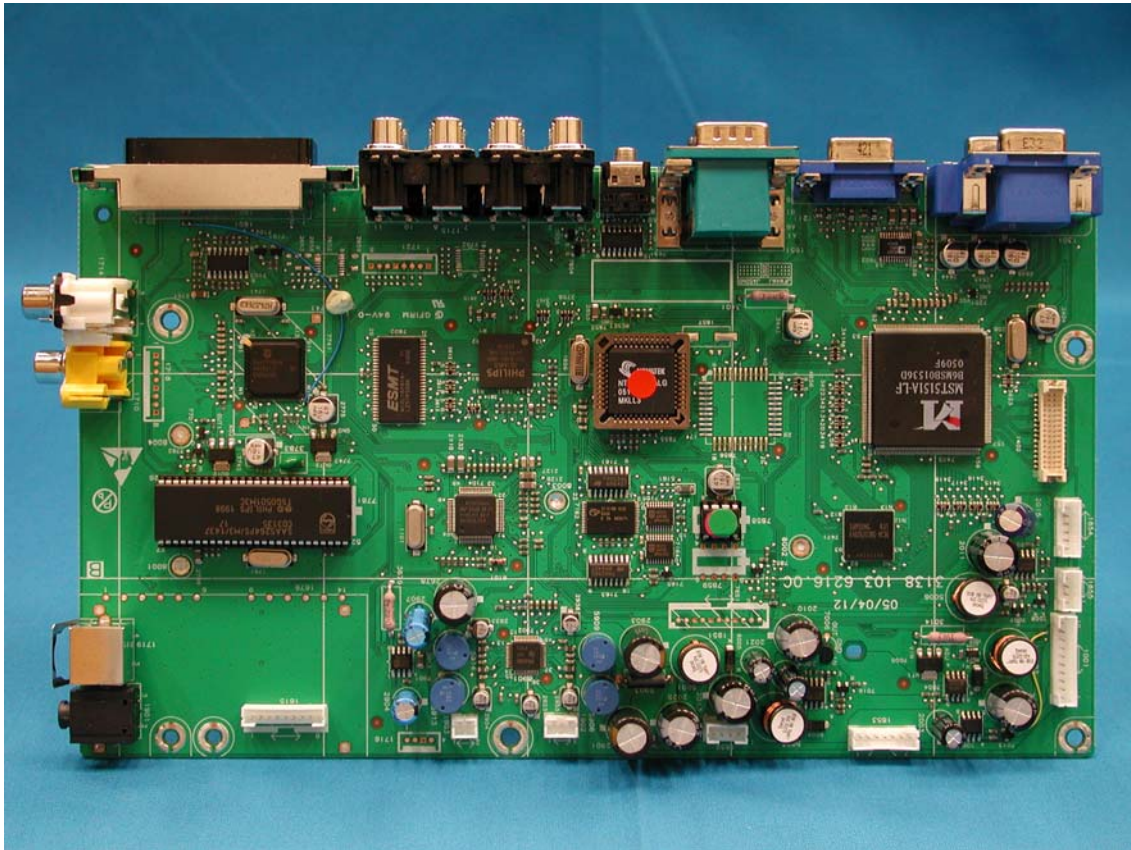
PCB Layout



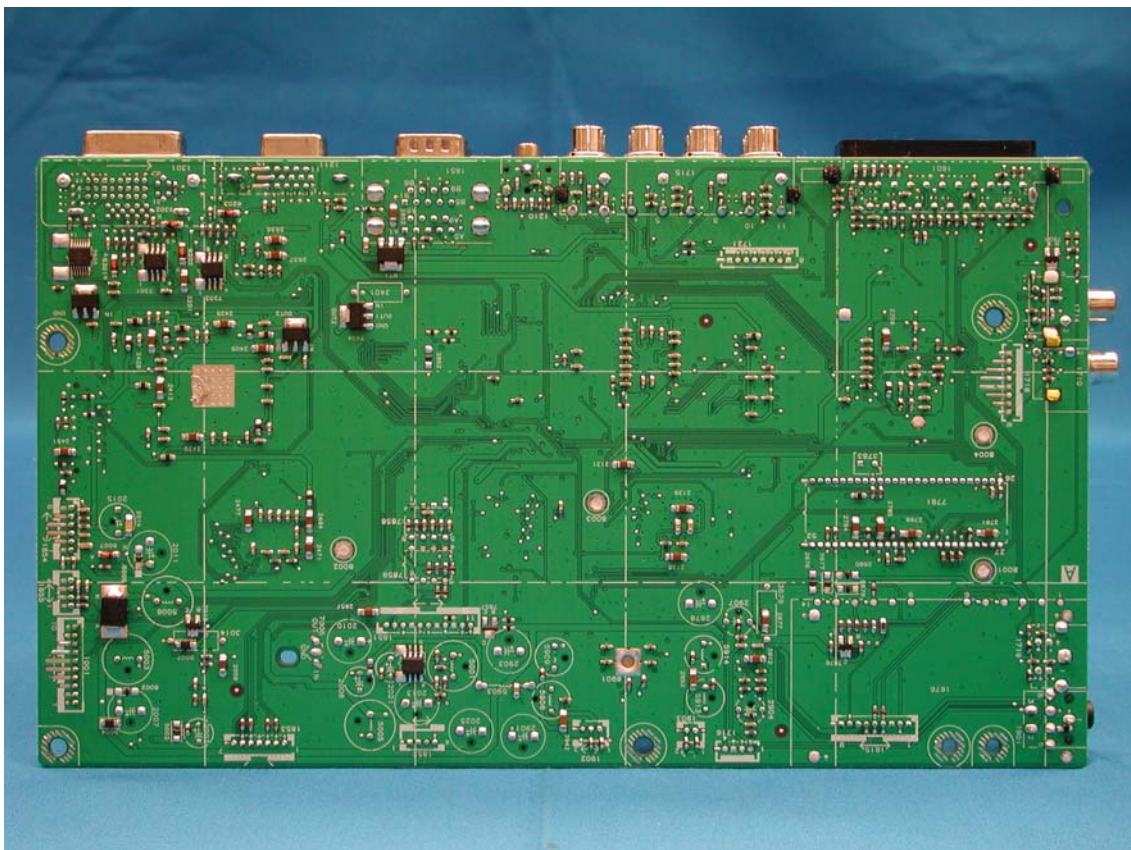
PCB Layout



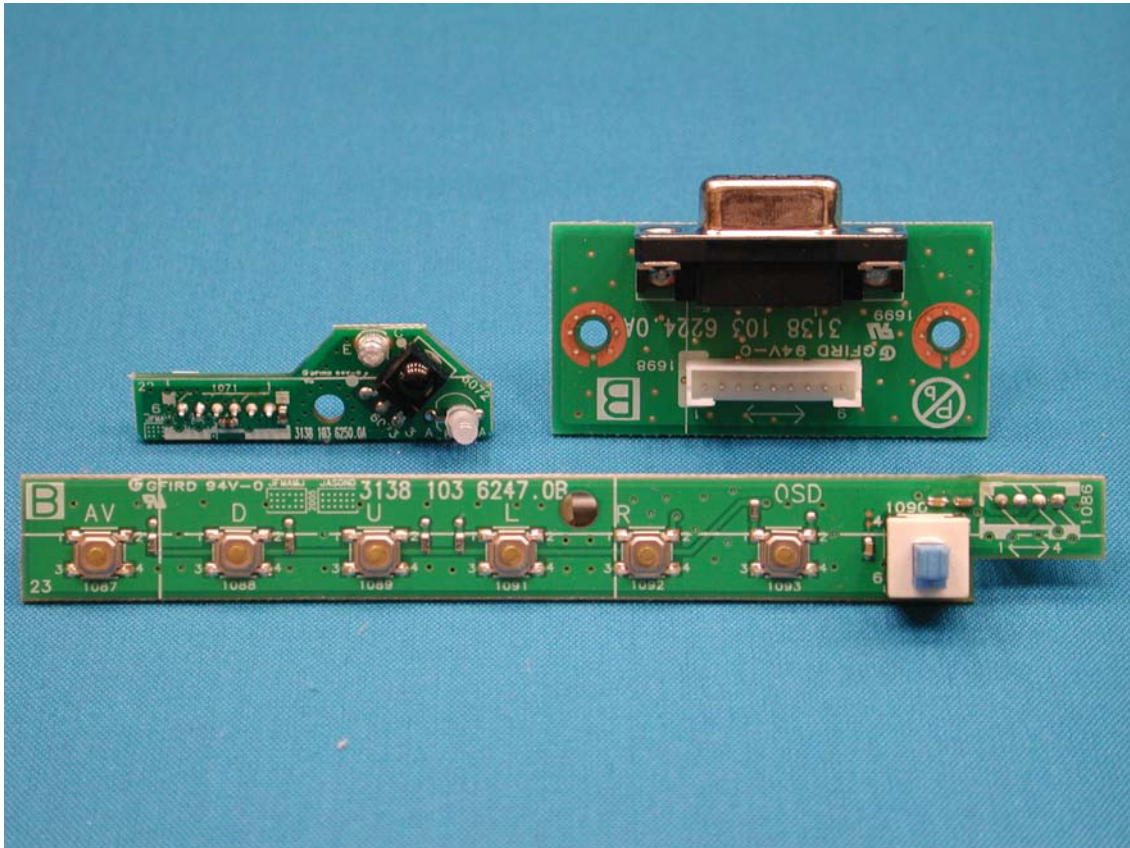
PCB Layout



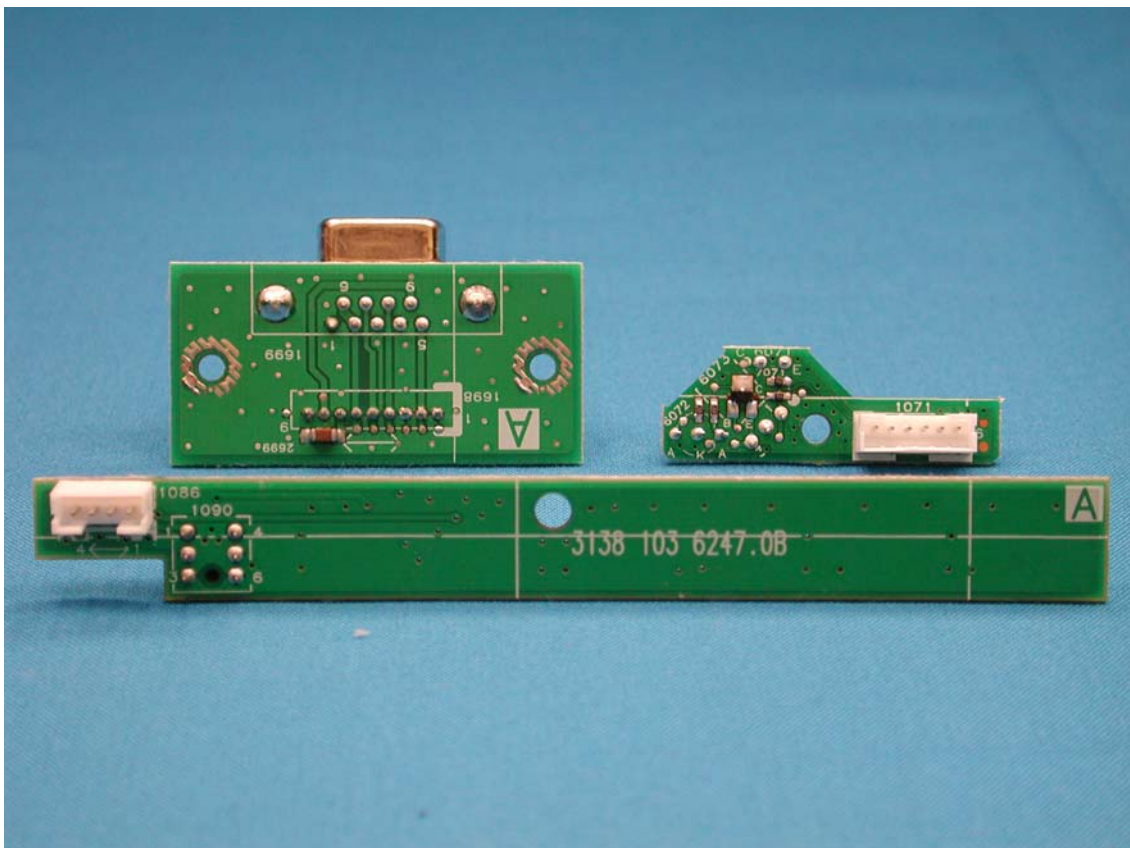
PCB Layout



PCB Layout



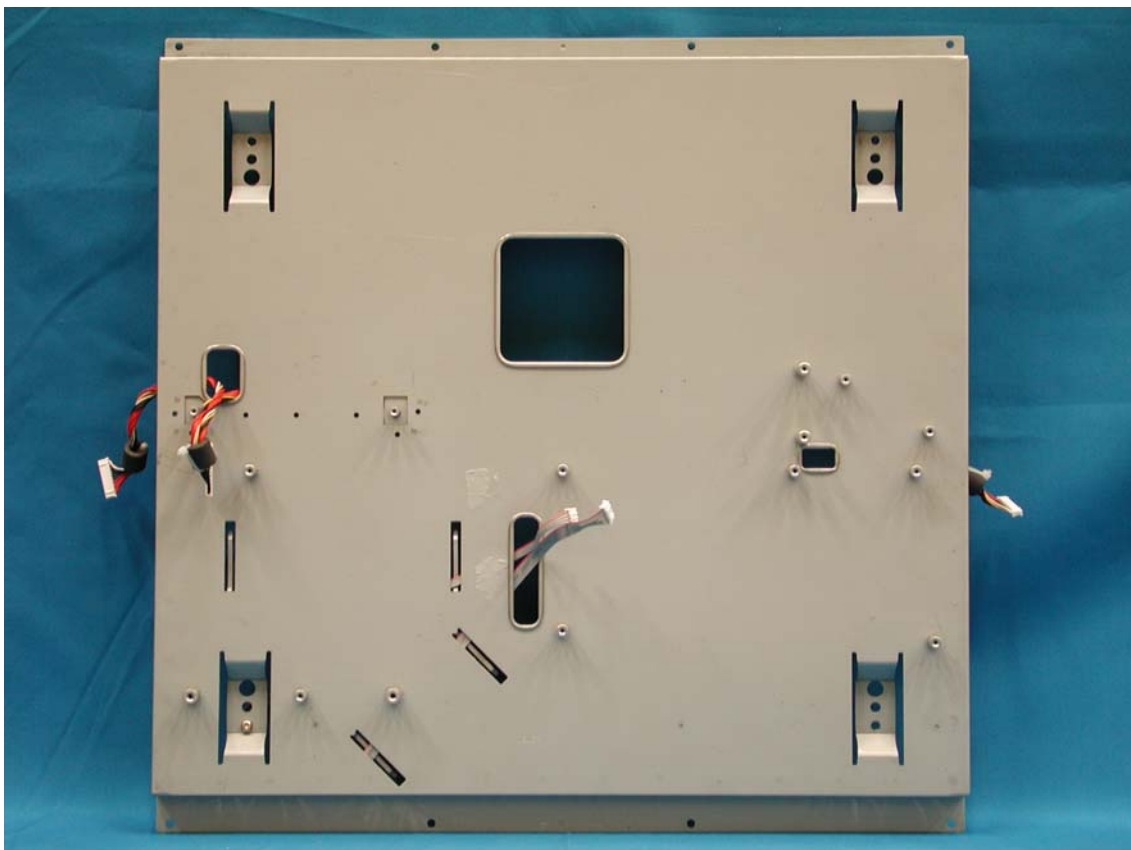
PCB Layout



Assembly w/o PCB



Plate



LCD Panel



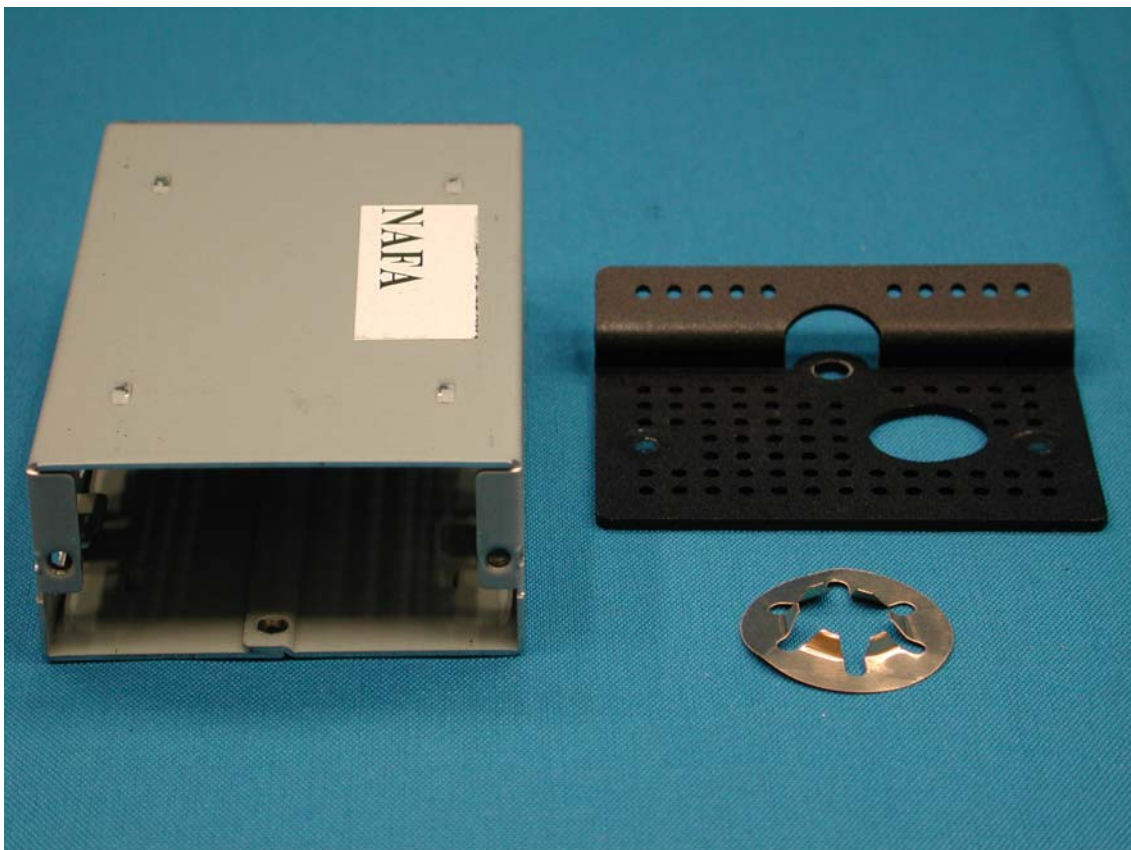
Tuner



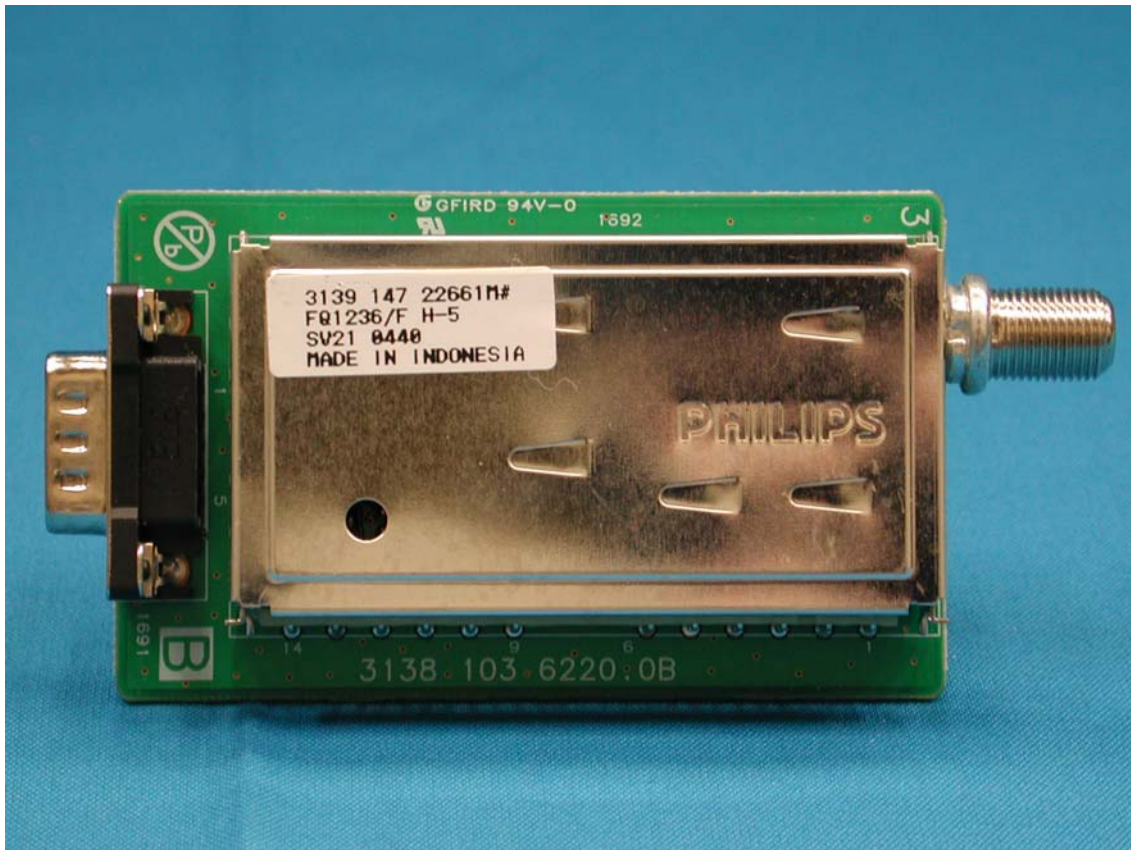
Tuner Assembly



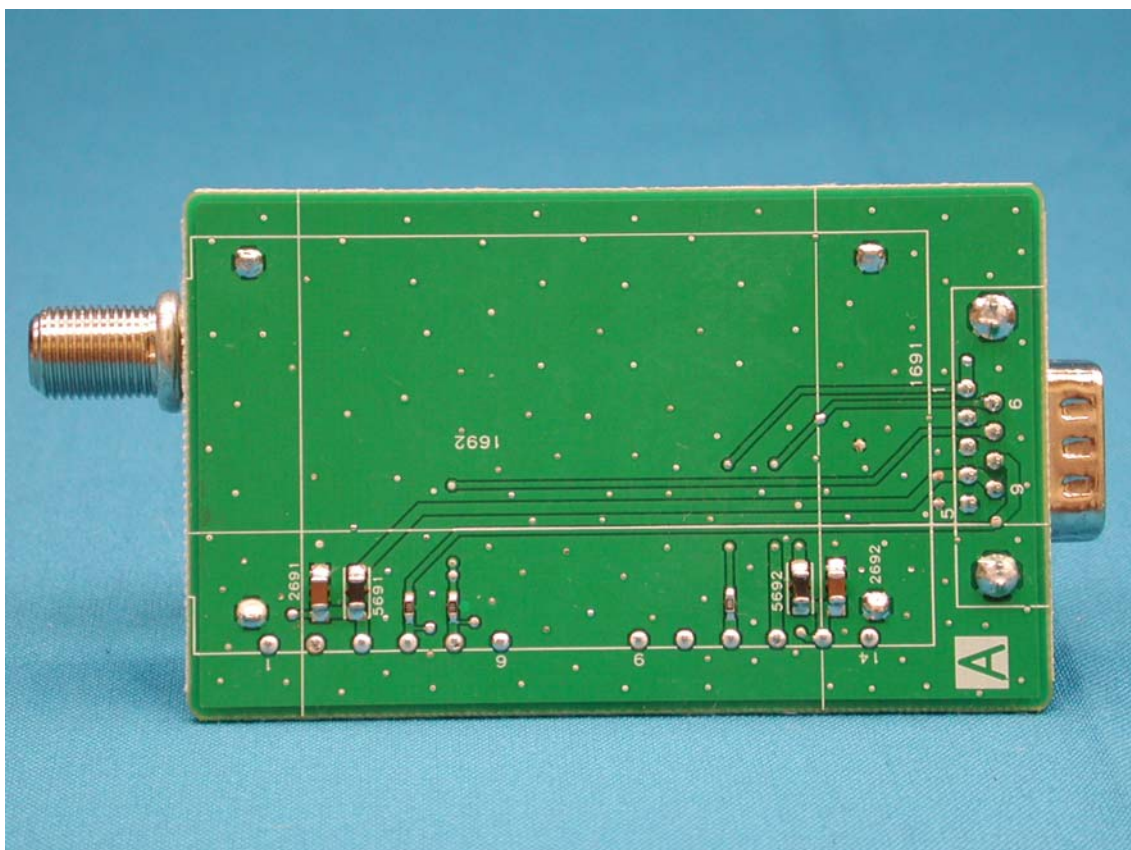
Tuner Shielding



PCB Layout



PCB Layout



Speaker Front



Speaker Rear



Power Cord and I/F Cables

