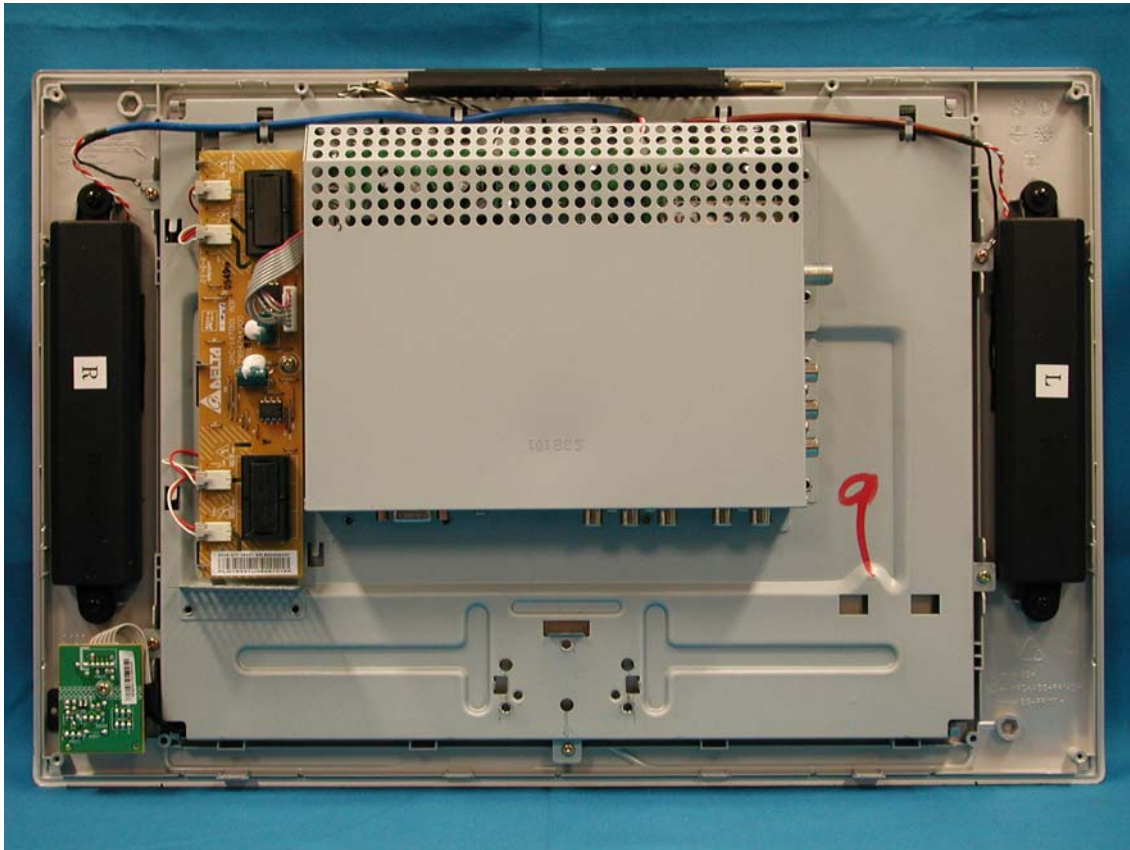


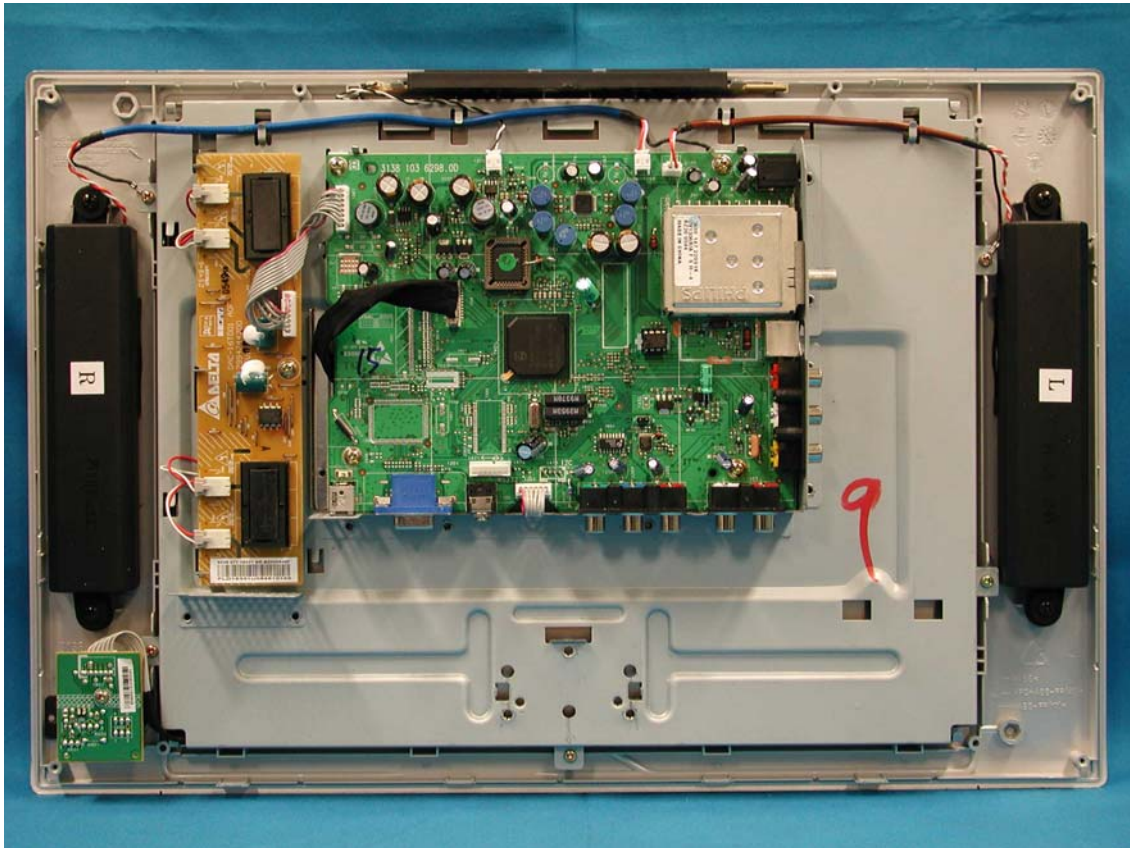
Rear View w/o Back Cover



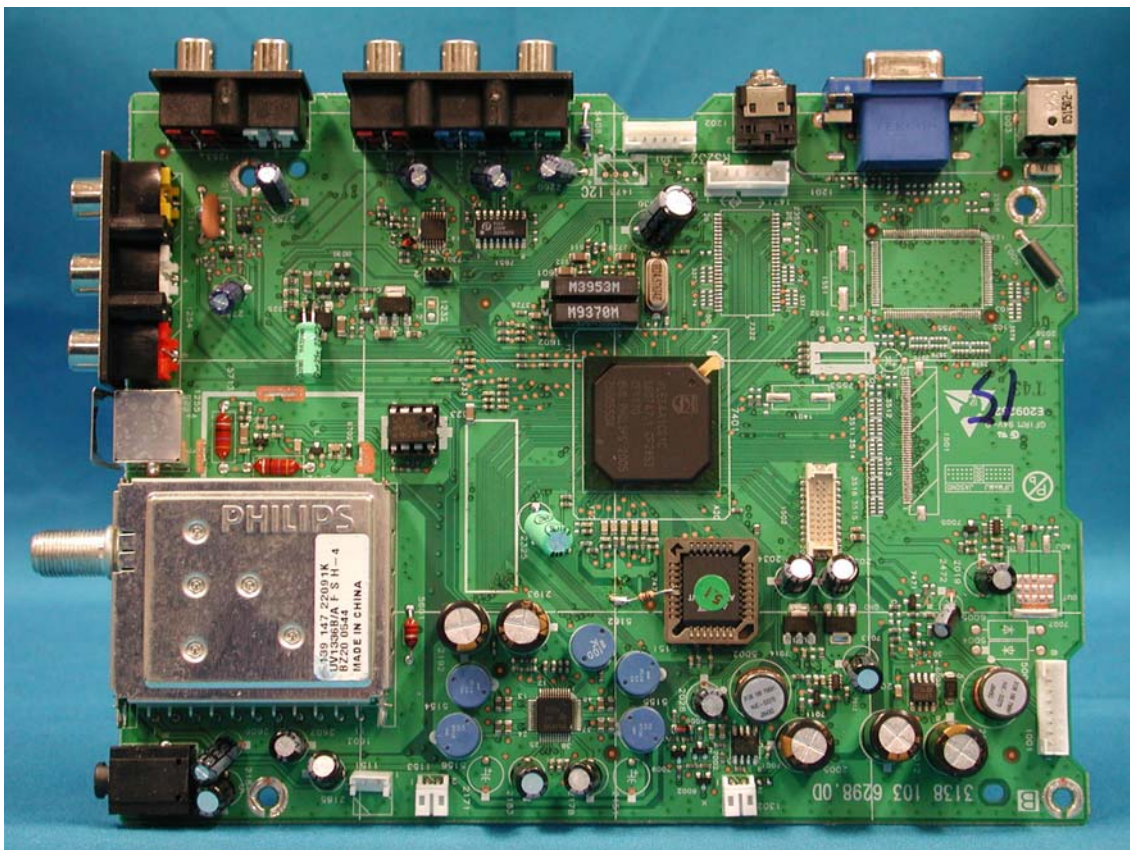
Shielding Cover



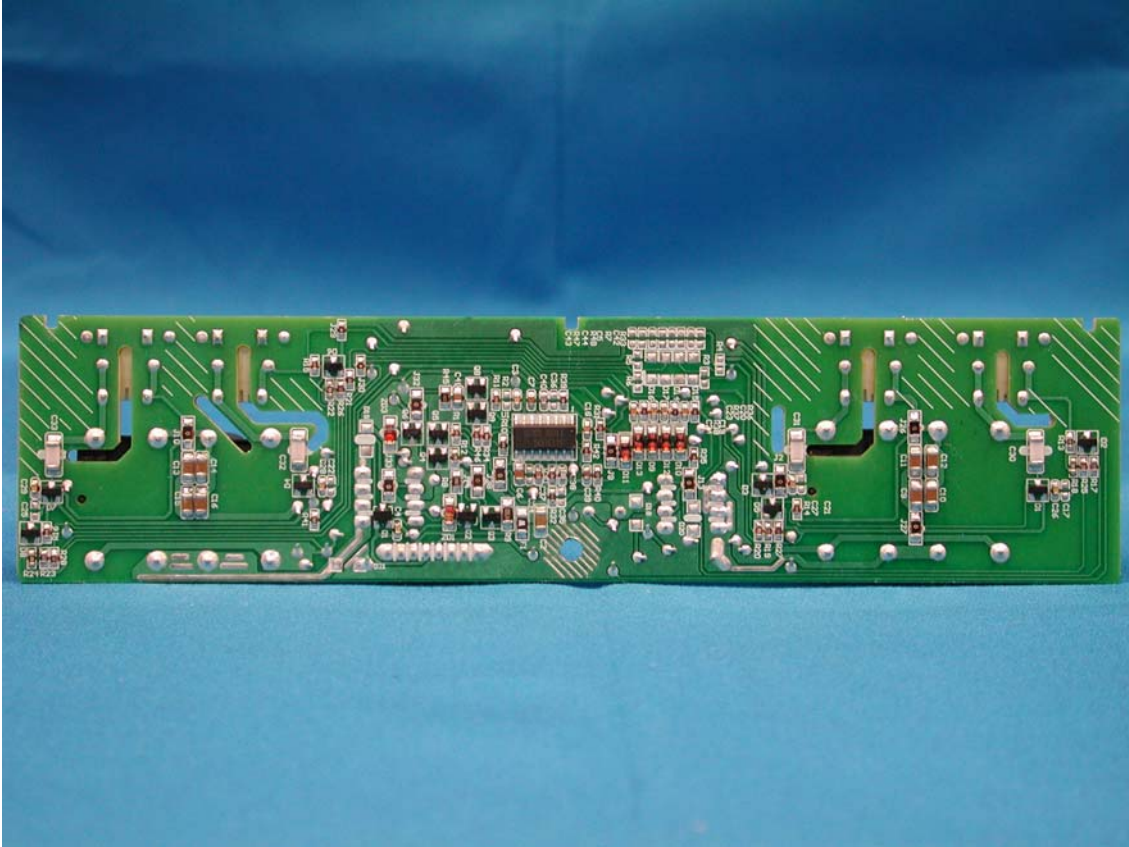
Assembly w/o Shielding Cover



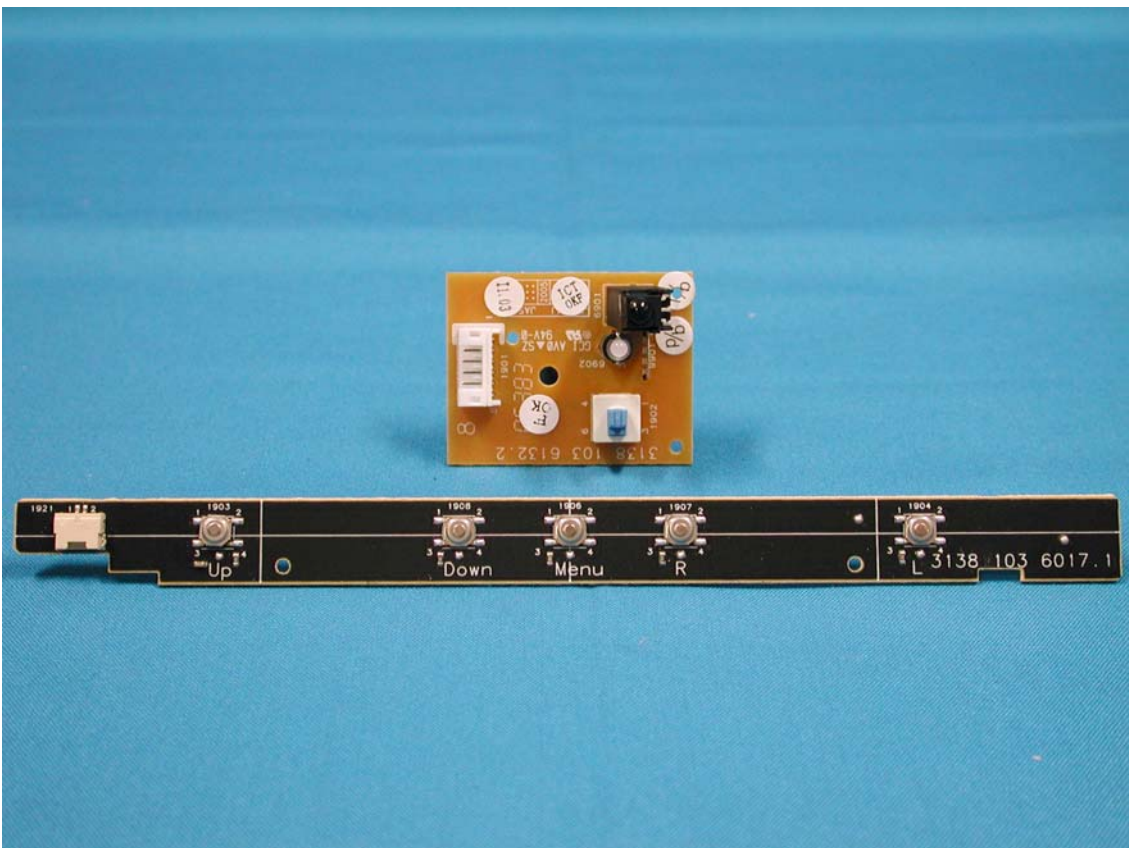
PCB Layout



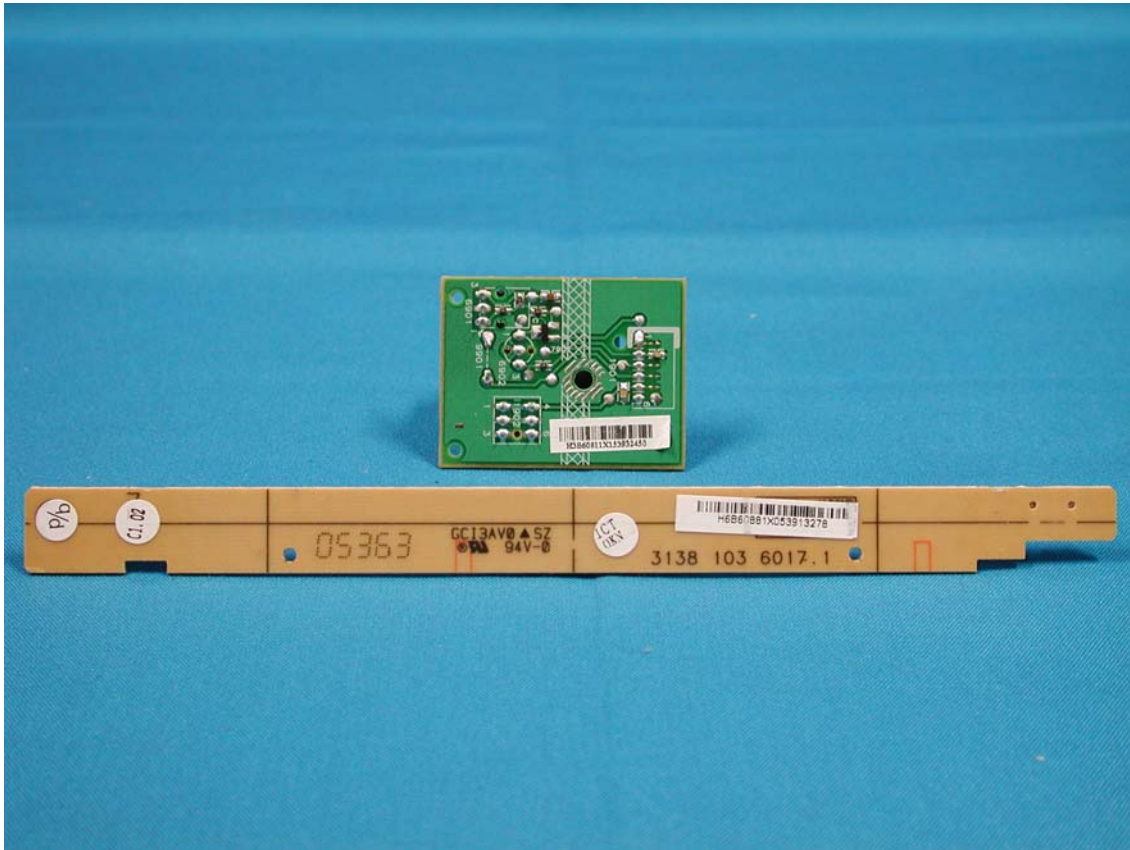
PCB Layout



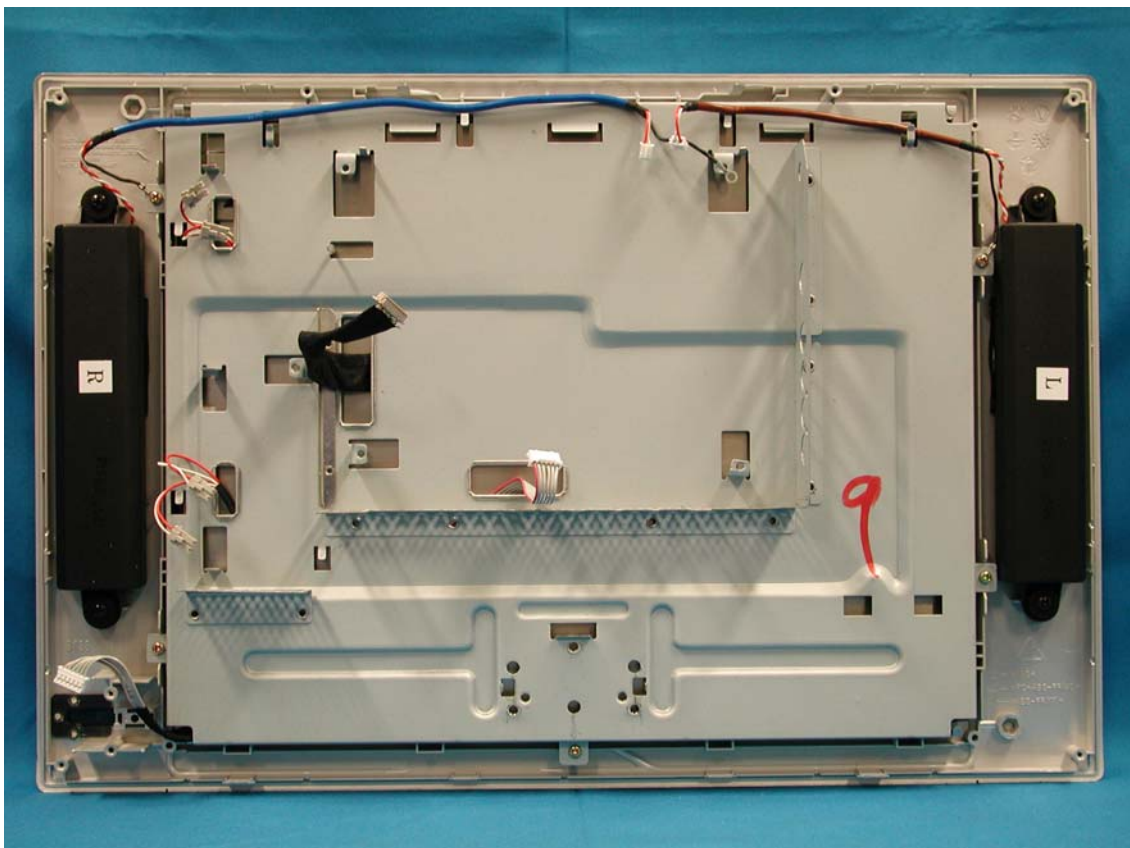
PCB Layout



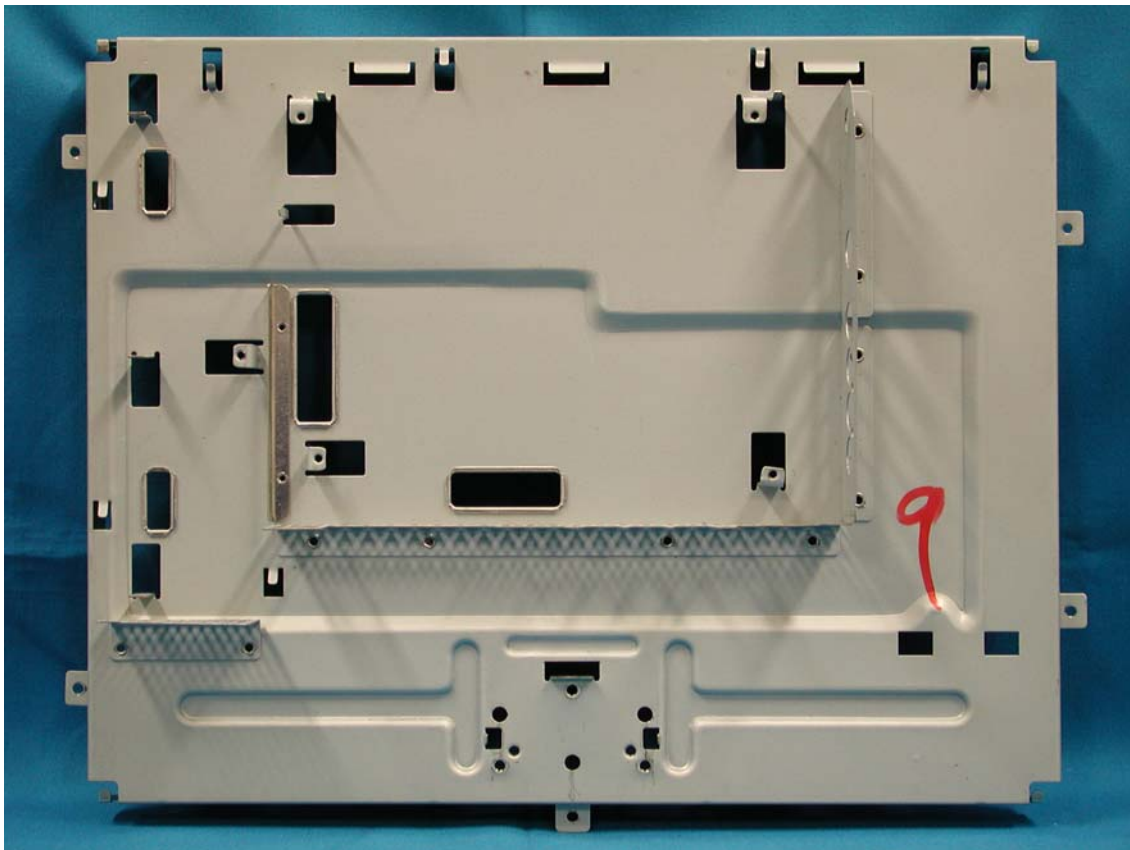
PCB Layout



Assembly w/o PCB



Plate



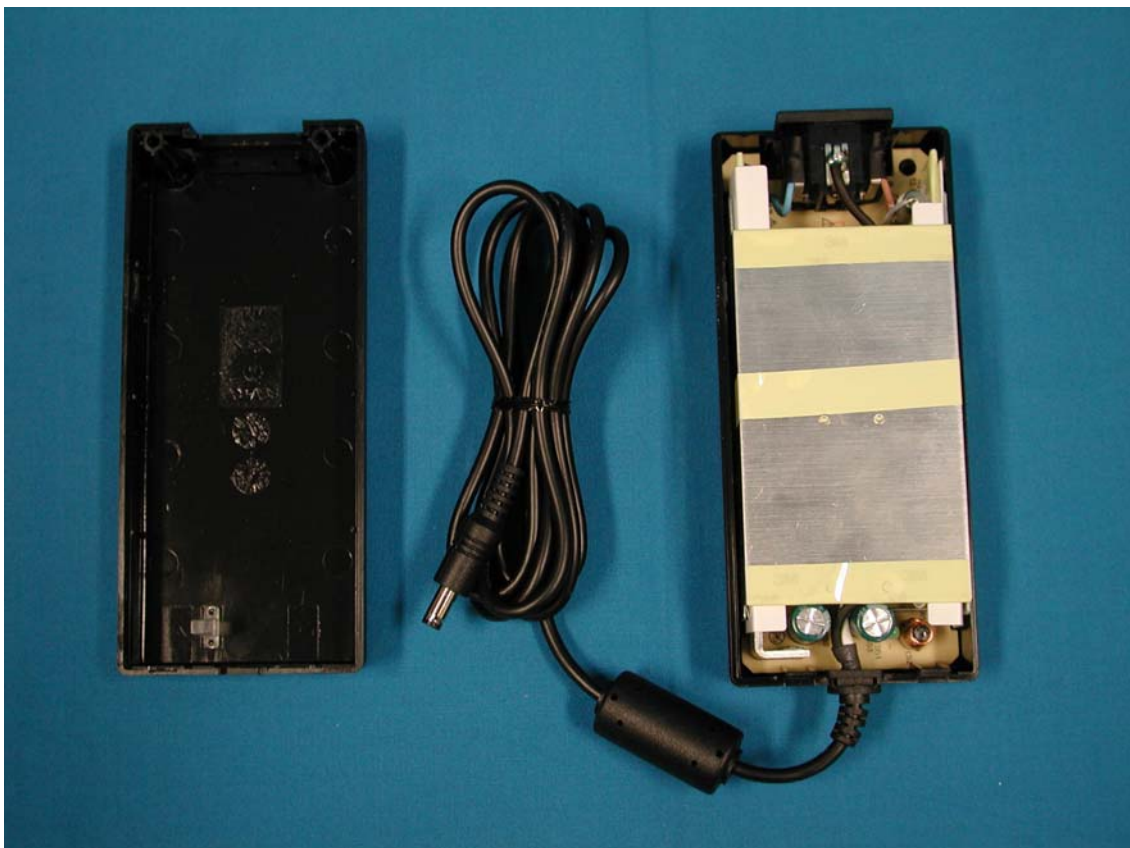
LCD Panel



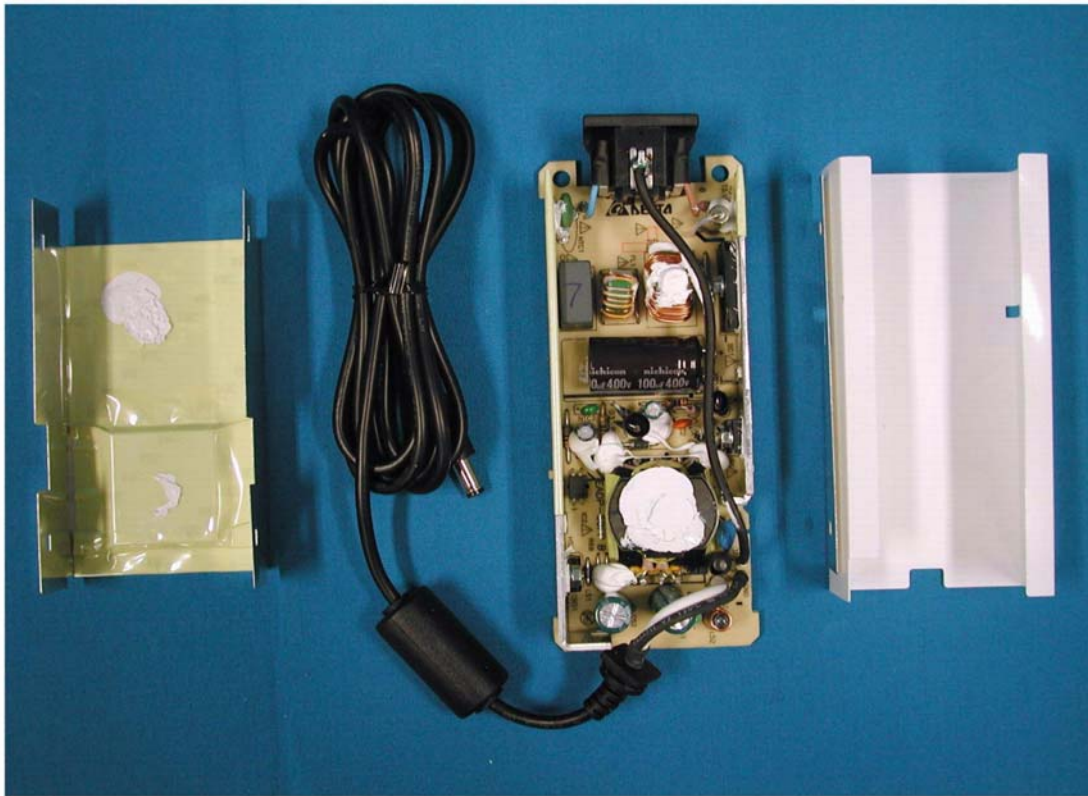
AC Adapter



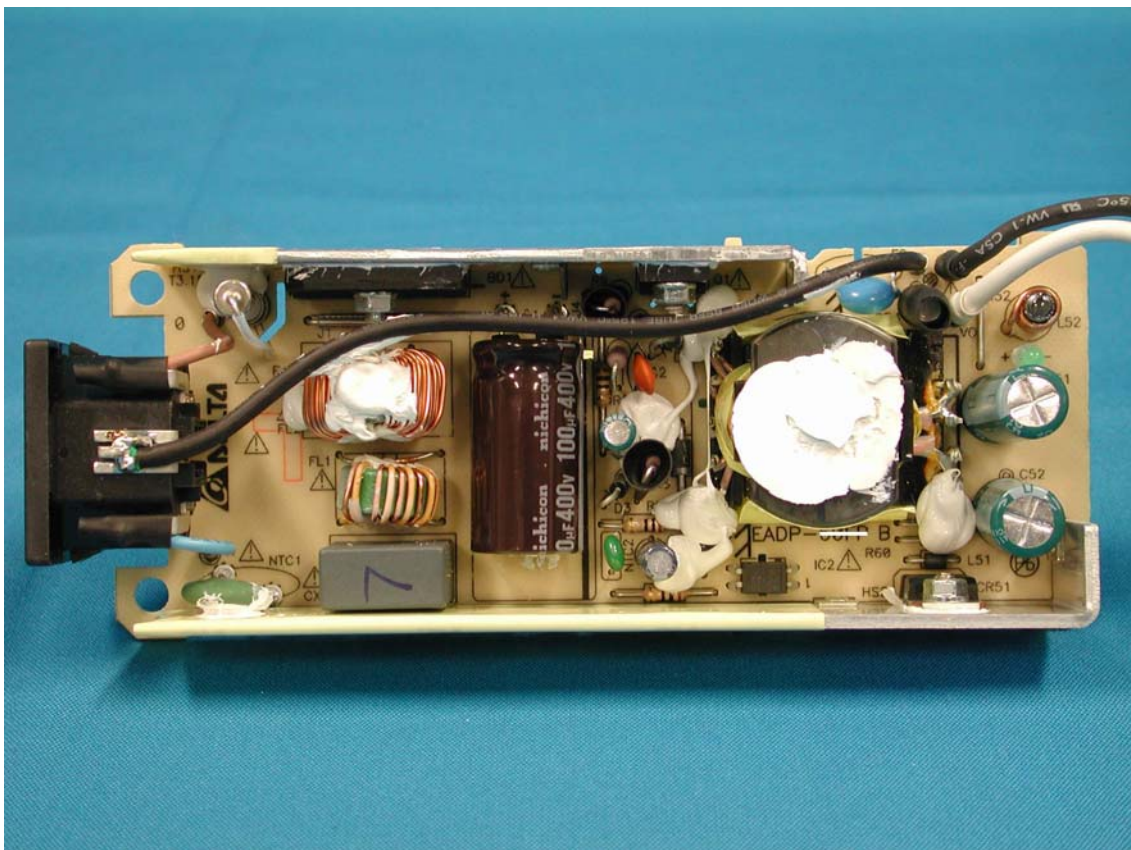
Assembly with Shielding



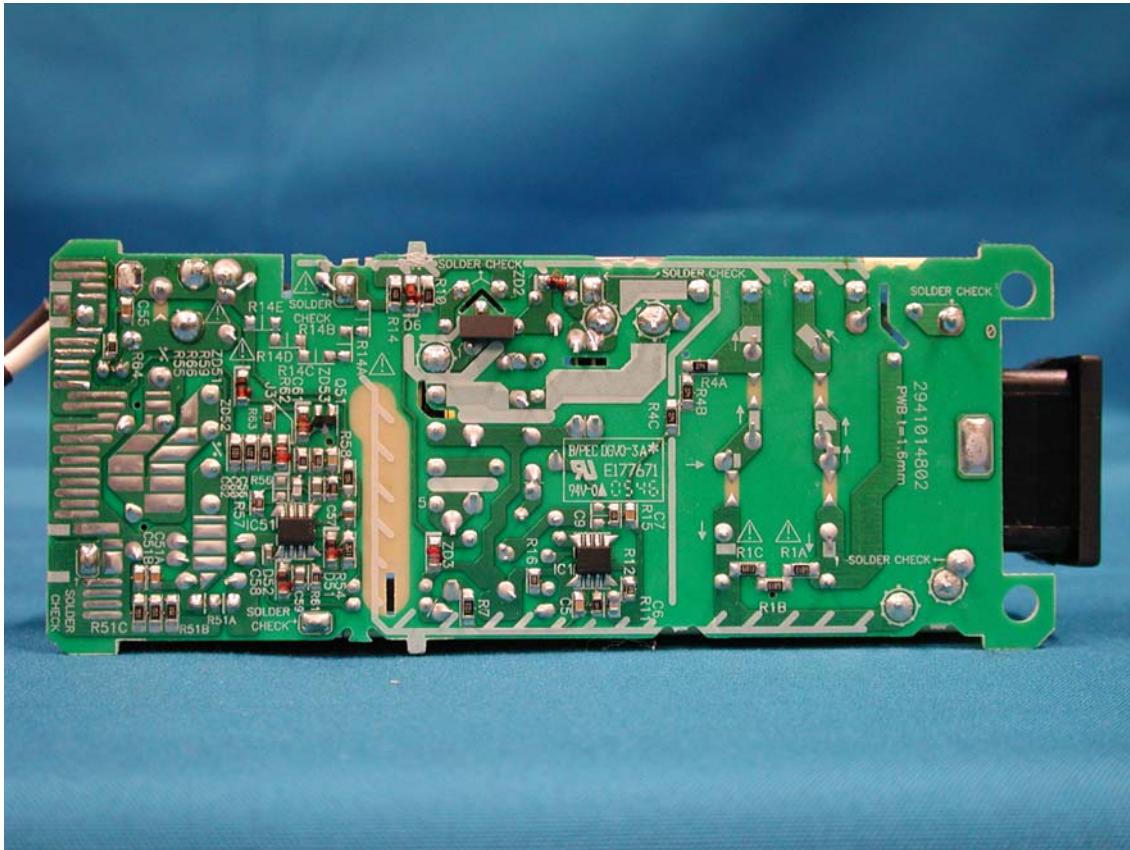
Assembly with Shielding



PCB Layout



PCB Layout



Power Cord and I/F Cables

