

Figure5  
Remove Front Cover of LCD, Internal View



Figure6  
Speaker, Internal View



Figure7

*Remove Back Cover of LCD and OSD Function Key Control Board*



Figure 8

*OSD Function Key Control Board (Component View)*





Figure 9  
OSD Function Key Control Board (Foil View)

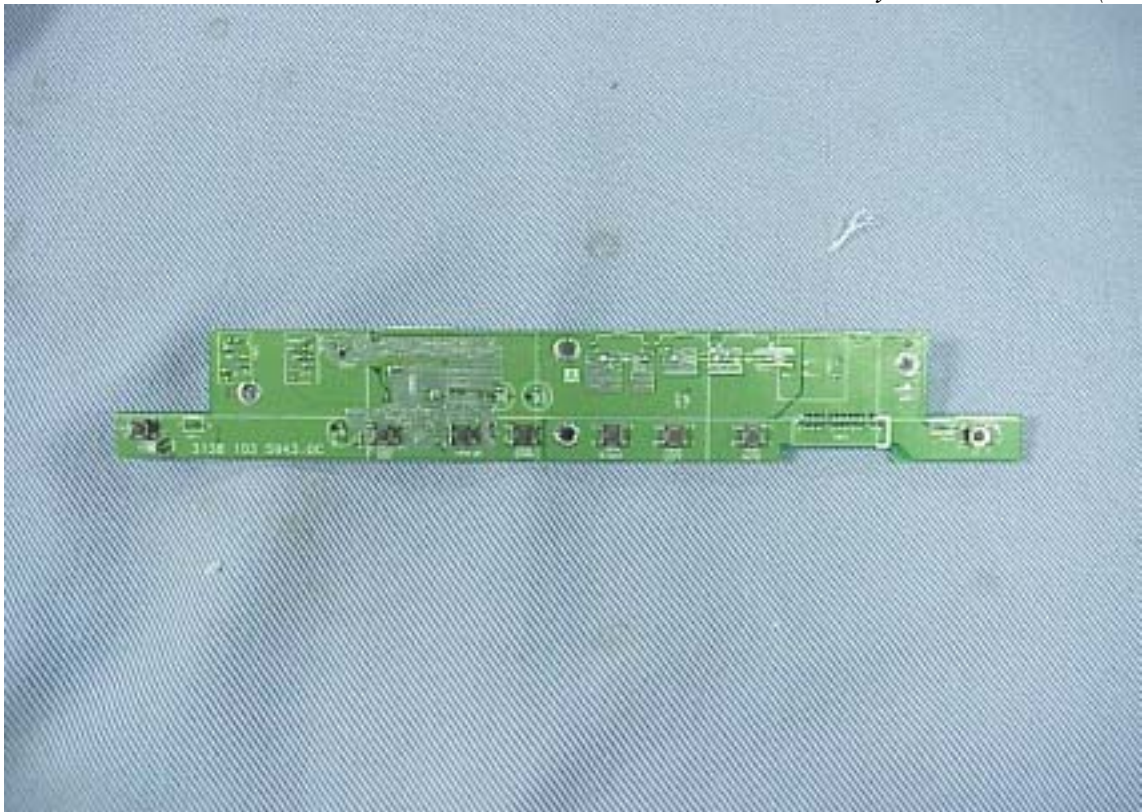


Figure 10  
Frame of Internal (Back View)



Figure 11

S/N: TY0304728, Remove Metal cover of PCB, Internal View



Figure 12

S/N: TY0304728, Remove Main Board and Power Board, Internal View





Figure 13  
S/N: TY0304728, Main Board (Component View)



Figure 14  
S/N: TY0304728, Main Board (Foil View)

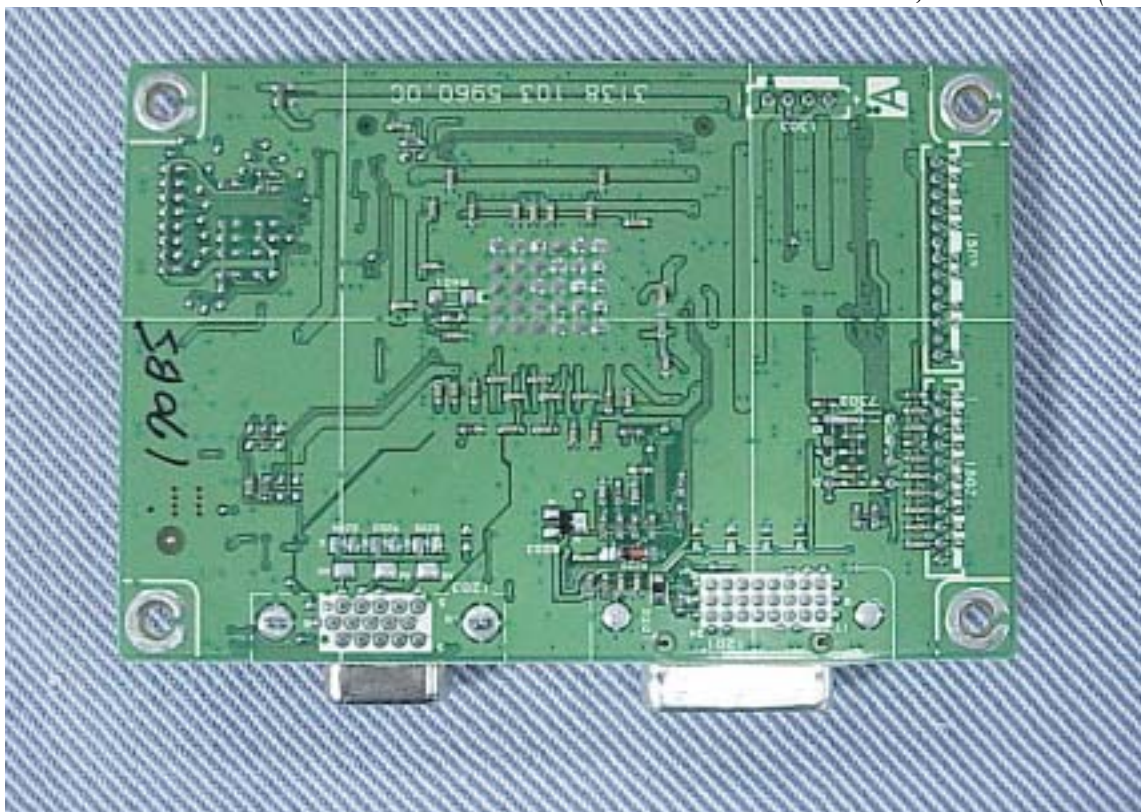




Figure 15  
S/N: TY0304728, Power Board (Component View)



Figure 16  
S/N: TY0304728, Power Board (Foil View)

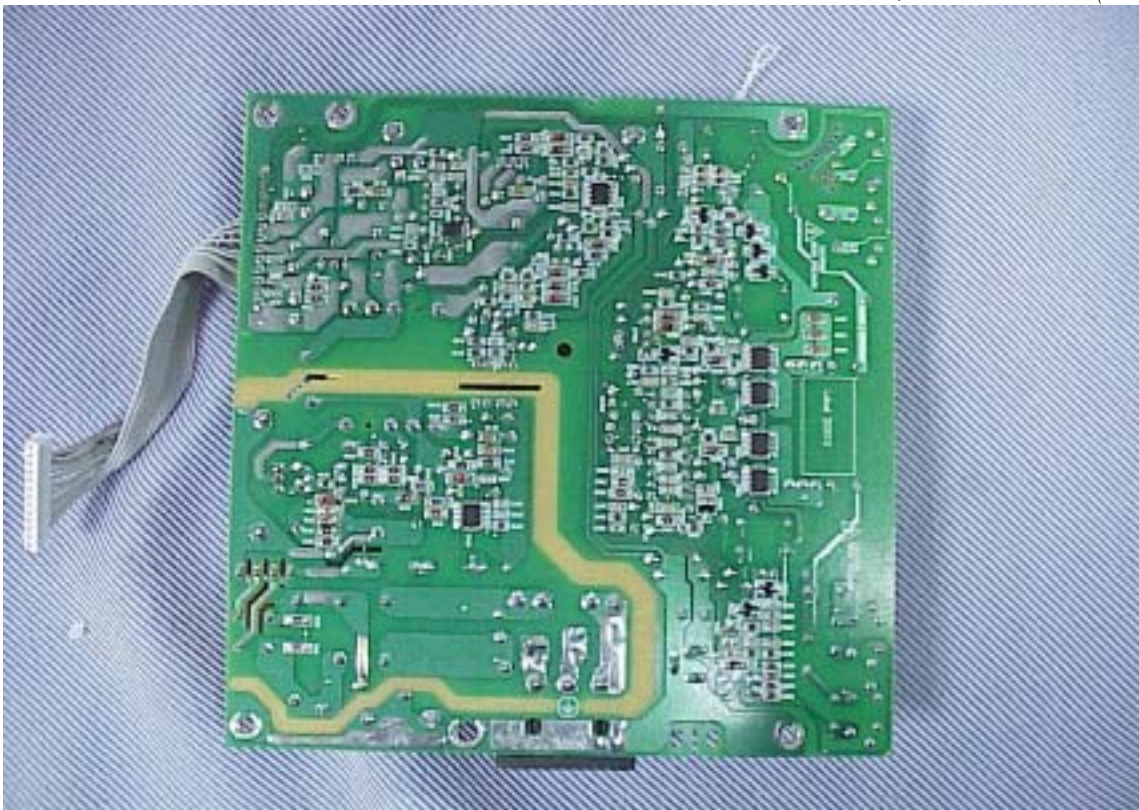




Figure 17

S/N: TY0304728, Remove Metal Cover of LCD Panel, Internal View

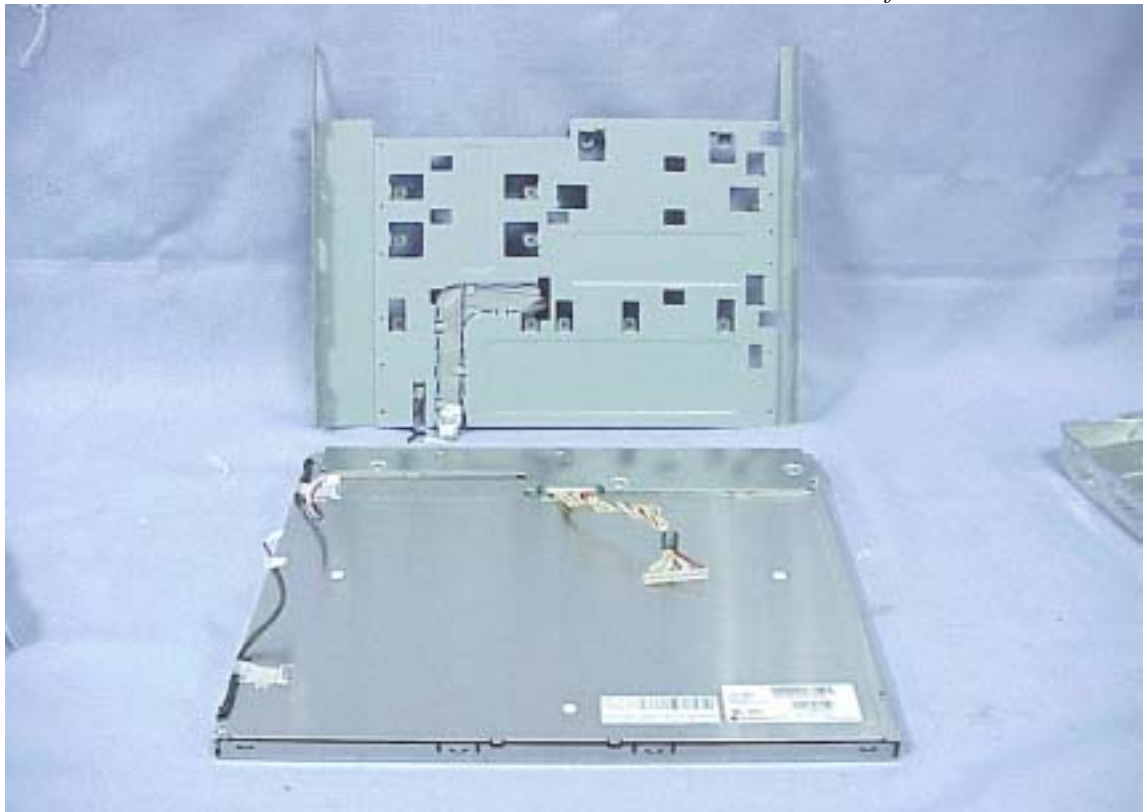


Figure 18

S/N: TY0304728, Label of LCD Panel



Figure 19

S/N: TY0304728, Remove Cover of LVDS of LCD Panel, Internal View



Figure 20

S/N: TY0304728, LVDS Board of LCD Panel (Component View)

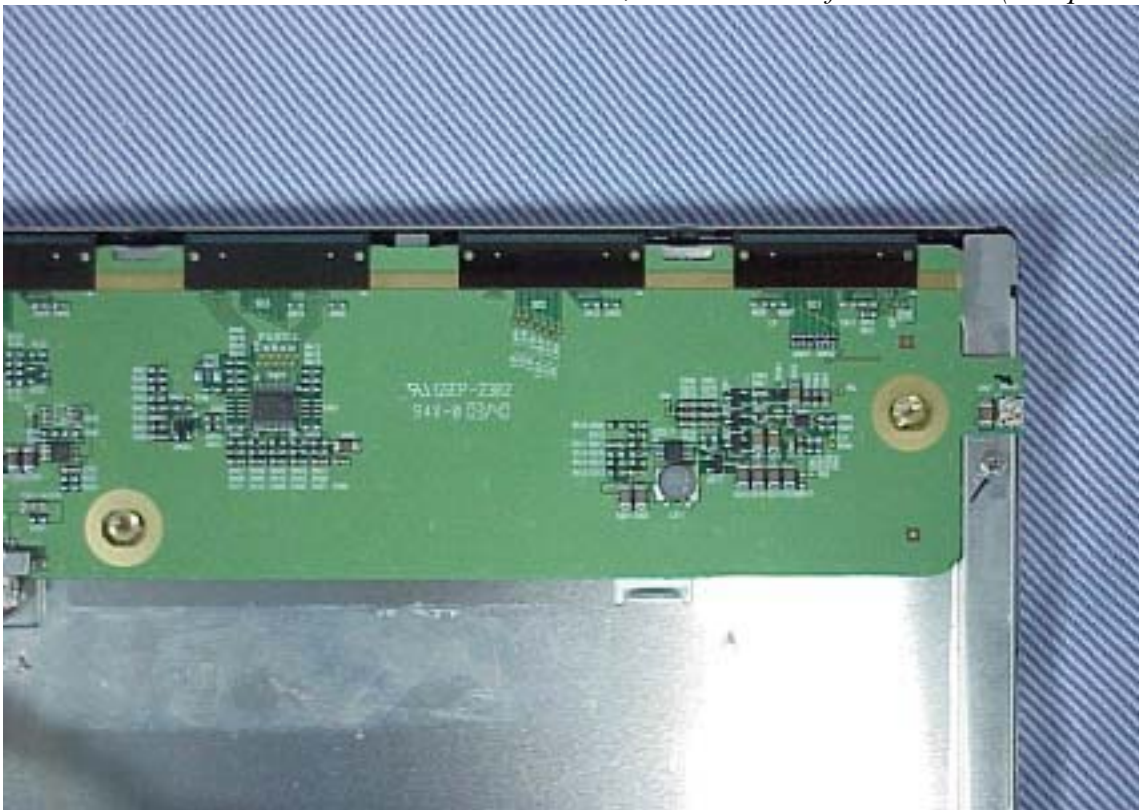




Figure 21

S/N: TY0304728, LVDS Board of LCD Panel (Component View)

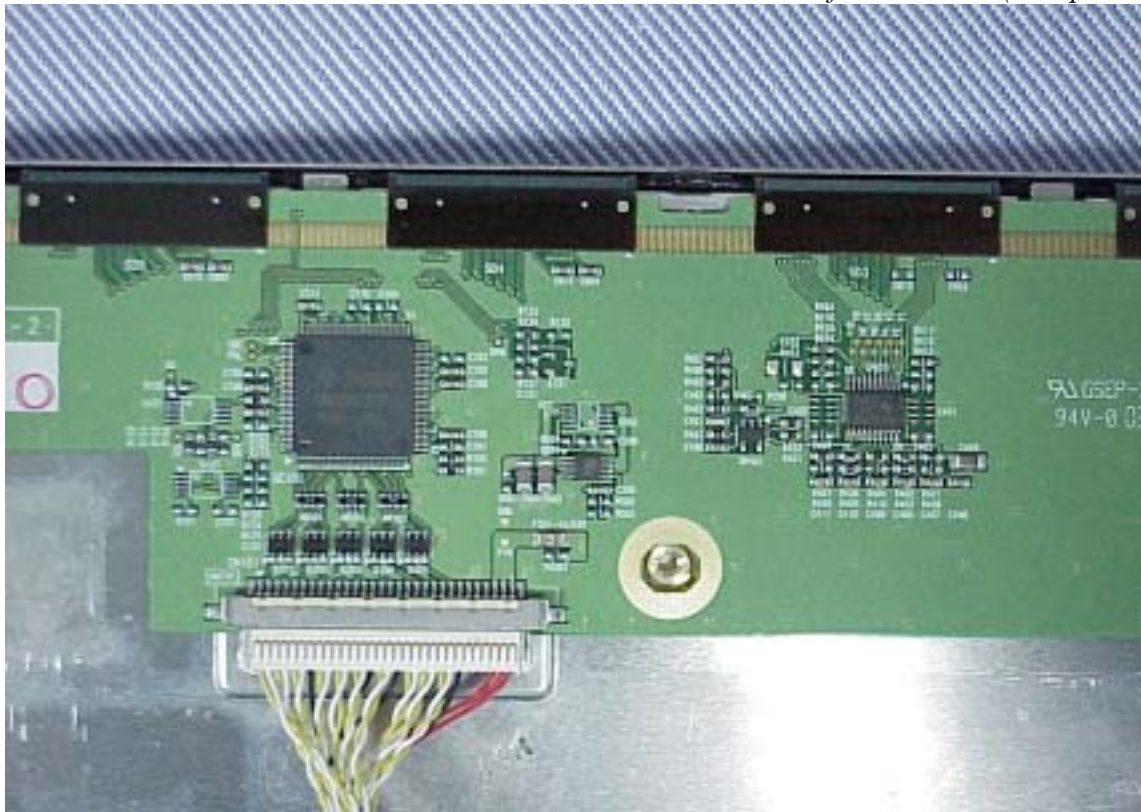


Figure 22

S/N: TY0304728, LVDS Board of LCD Panel (Foil View)

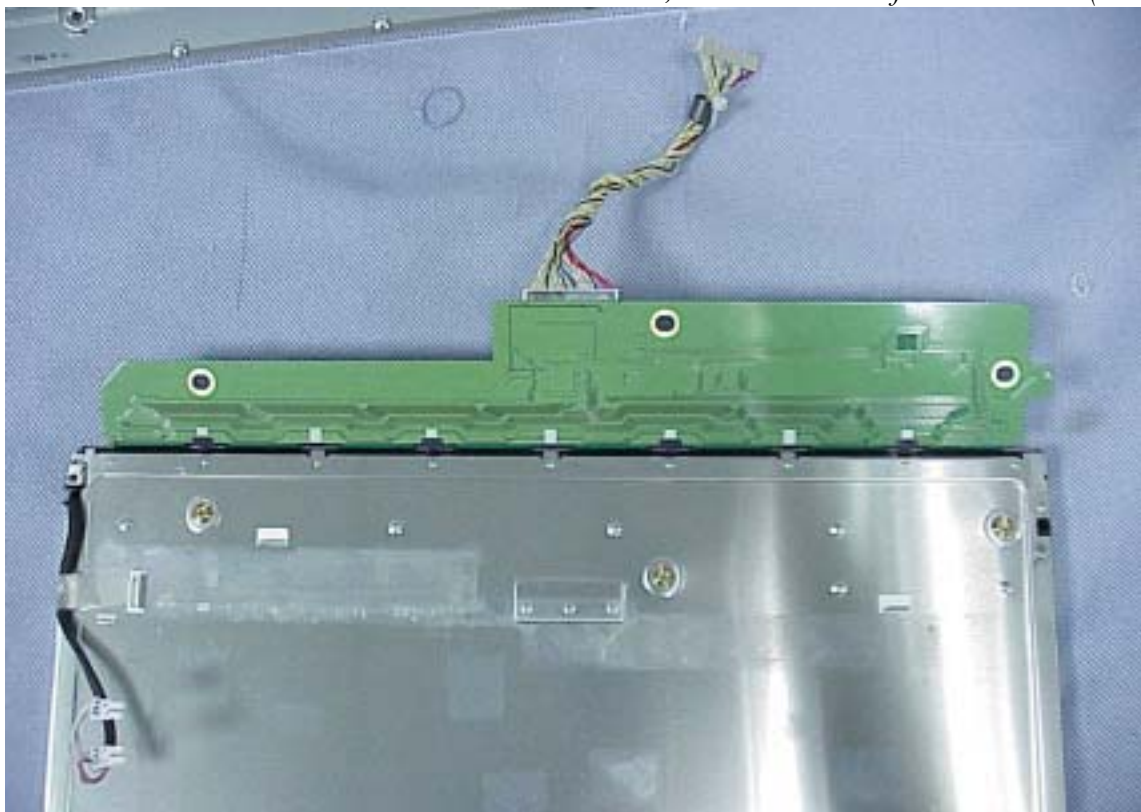


Figure 23  
S/N: TY0304727, Frame of Internal



Figure 24  
S/N: TY0304727, Main Board (Component View)





Figure 25  
S/N: TY0304727, Main Board (Foil View)

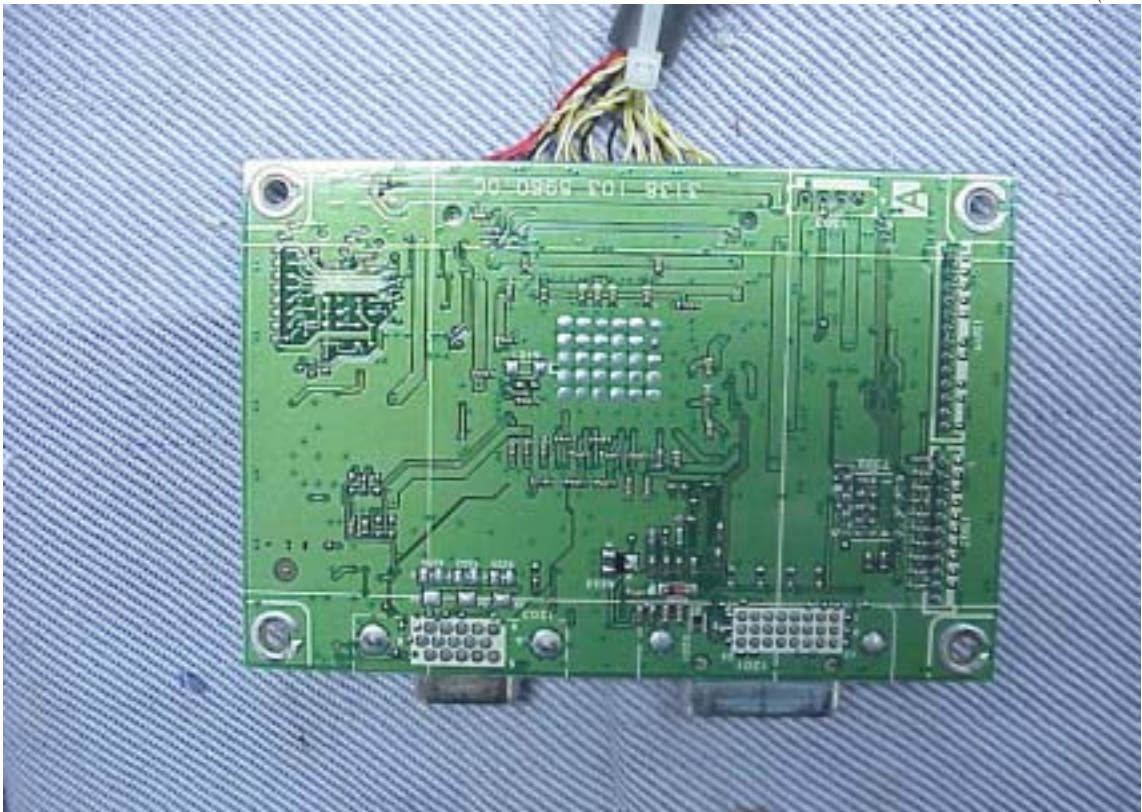


Figure 26  
S/N: TY0304727, Power Board (Component Side)





Figure 27  
S/N: TY0304727, Power Board (Foil View)

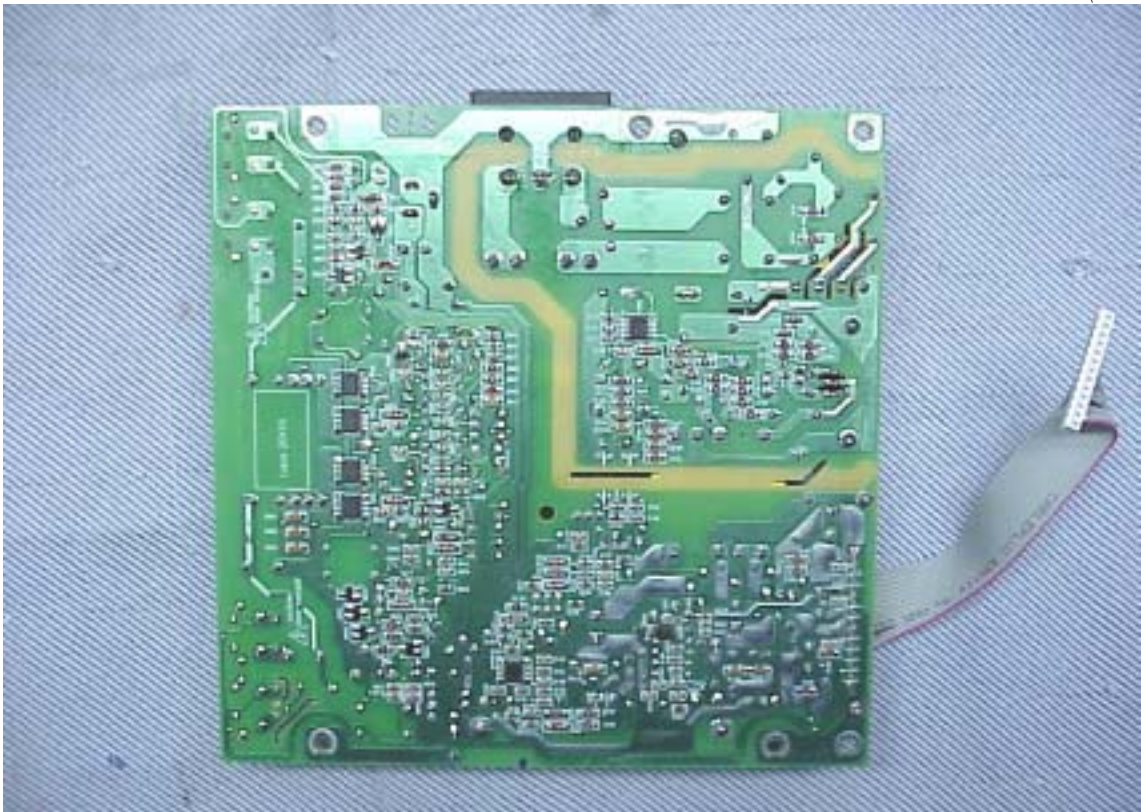


Figure 28  
S/N: TY0304727, Remove Metal Cover of LCD Panel, Internal View





Figure 29  
S/N: TY0304727, Label of LCD Panel

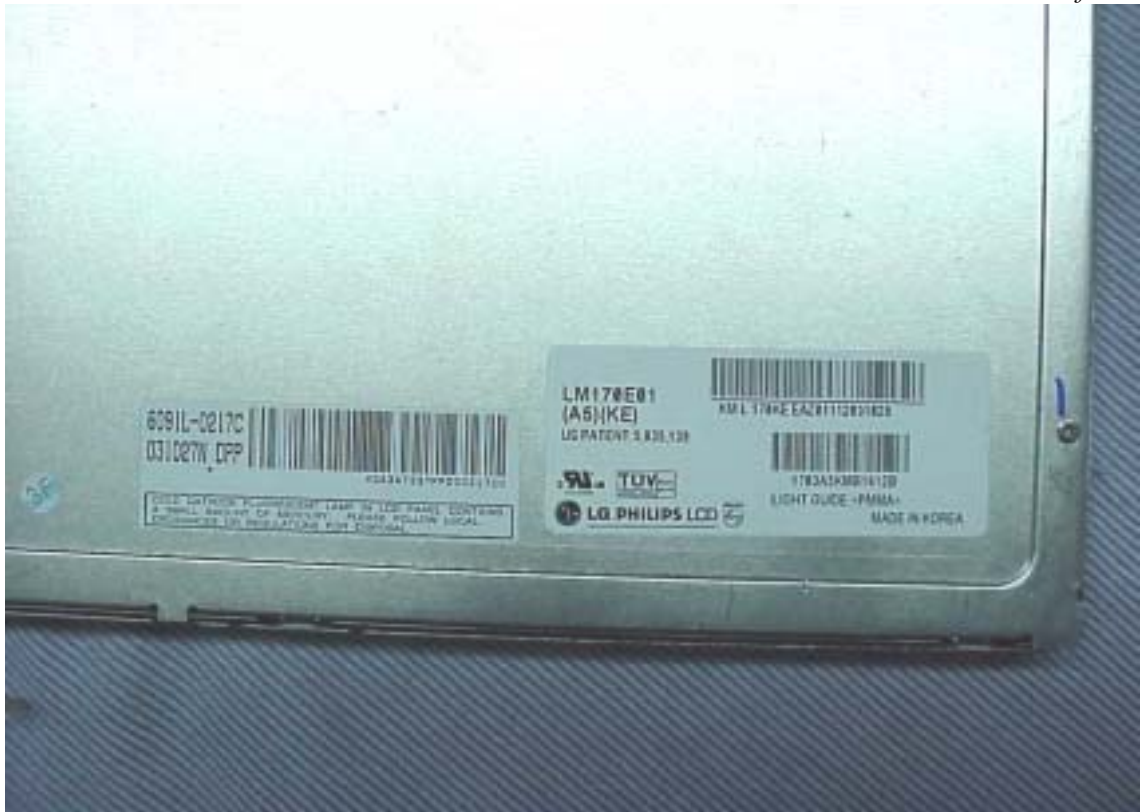


Figure 30  
D-Sub & DVI Signal Cable

