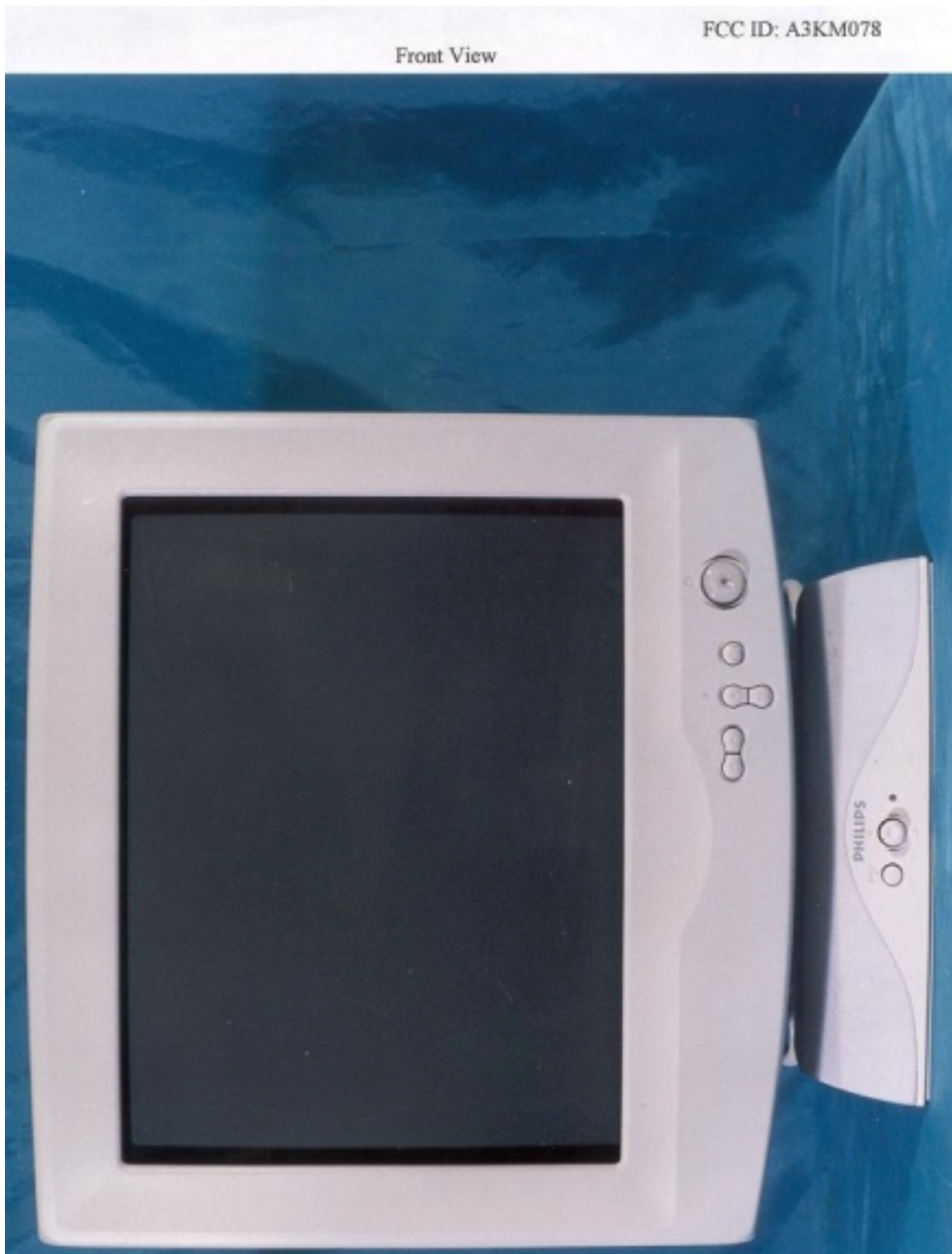


Exhibit 5



Rear View

FCC ID: A3KM078



## FCC Label

**PHILIPS**

MODEL NO. / 型号: 105S26

电源: 100-240V ~ 60-50Hz 1.5-0.8A

FCC ID: A3KM078

校验: XXXXXXXXX

Chassis No.: CM2315

Manufactured: April 2000

制造厂商: Philips Elec. Industries Ltd.  
台湾飞利浦电子工业股份有限公司生产地址: 5 Tse Chiang 1 Road, Chungli Industrial Park P.O. Box 123  
Chungli Taoyuan Taiwan  
桃园县龟山乡中坜工业区第一路五号**MADE IN TAIWAN FAIT À TAIWAN**

X-Ray emission: Monitor complies with DHHS rules 21 CFR subchapter J applicable at date of manufacture.

This device complies with part 15 of the FCC Rules. Operation is subject to the following two conditions:

(1) This device may not cause harmful interference, and (2) This device must accept any interference received, including interference that may cause undesired operation.

This class B digital apparatus complies with Canadian ICES-003.

Cet appareil numérique de la classe B est conforme à la norme NMB-003 du Canada.

Apparat mit konformität für den Einsatz in Kanada. Apparat soll anders als für den Einsatz in Kanada.

Laito on ilmoitettu suojakäyttöolosuhteisiin.

Die in diesem Gerät enthaltene Röntgenstrahlung ist ausreichend

durch die gegenwärtige Kathodenstrahlröhre abgeschirmt, max. 29.5 KV

注意: 本显示器内有高压, 非专业人员, 请勿自行打开后盖, 以免危险!

**WARNING:**

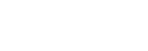
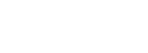
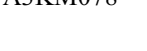
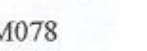
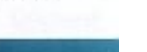
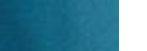
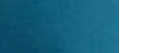
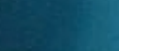
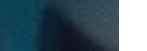
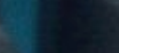
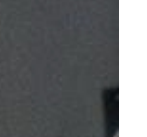
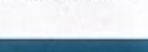
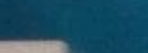
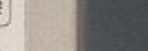
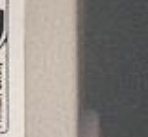
A) This apparatus must be earthed.

B) Live parts are made accessible when backcover is removed.

C) Always remove mains plug from wall socket before any service operations.

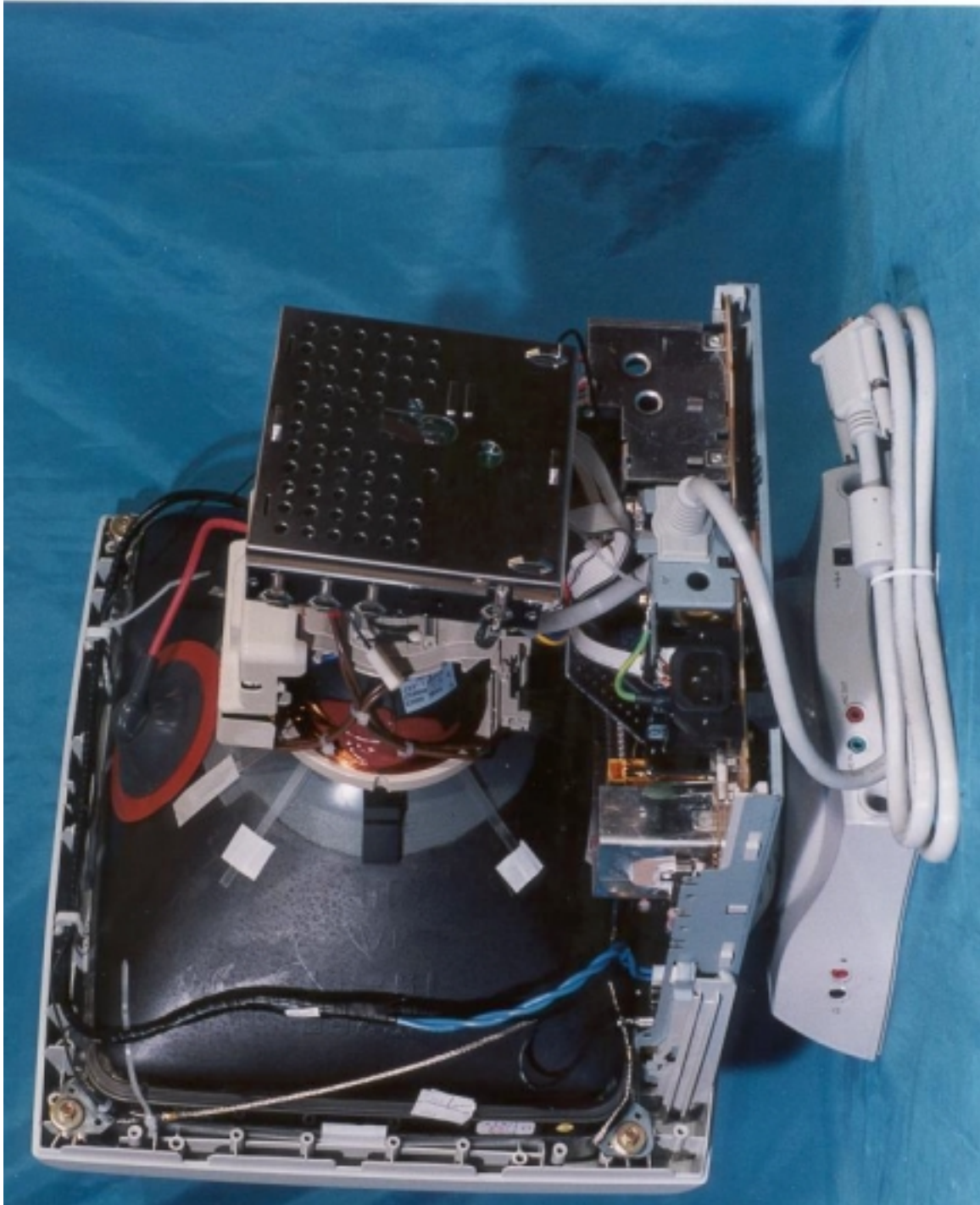
Never remove covers unless qualified to do so.

This unit contains dangerous voltages.

As an ENERGY STAR® Partner,  
Philips has determined that this  
product meets the ENERGY STAR®  
guidelines for energy efficiency.

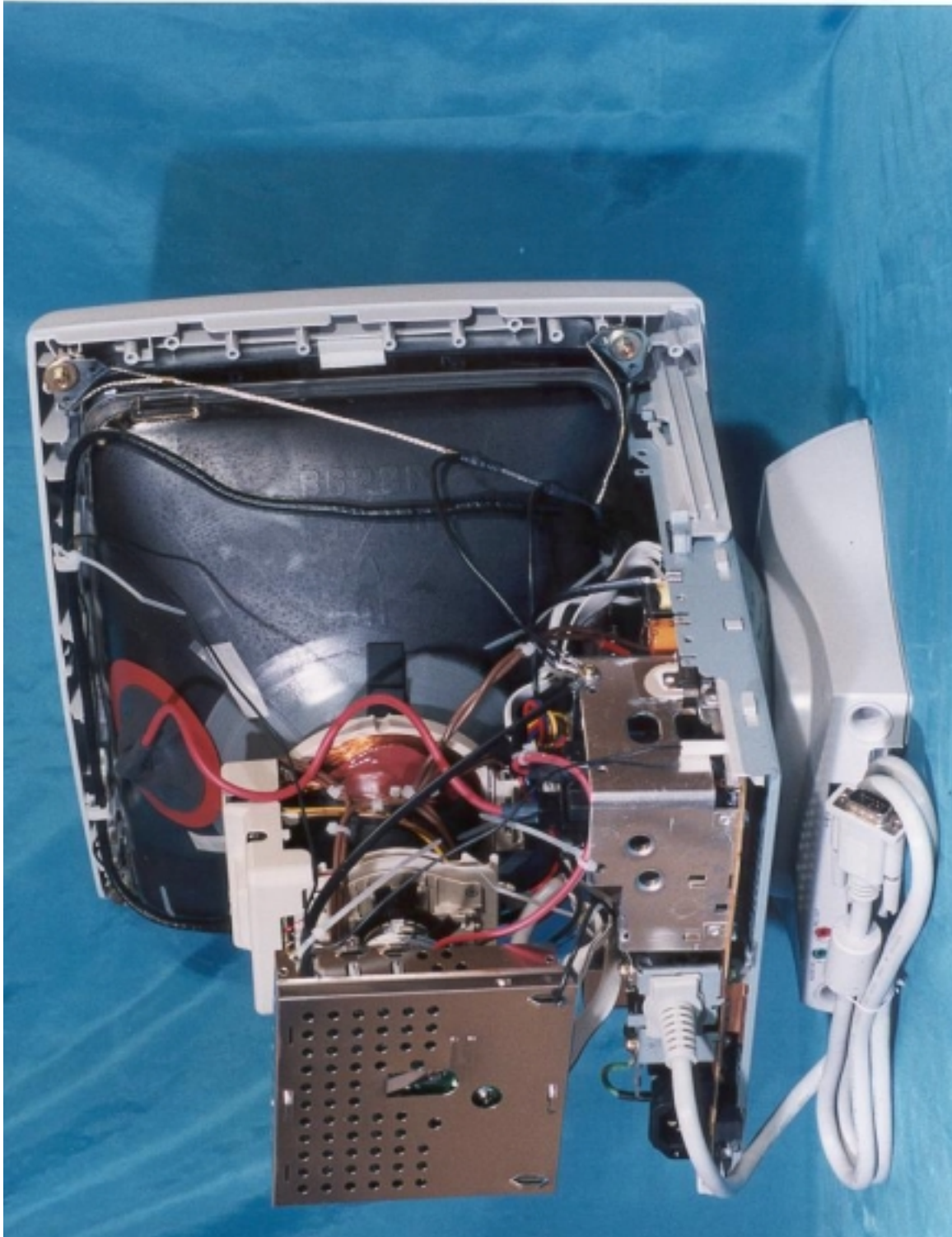
Side View w/o Back Cover

FCC ID: A3KM078



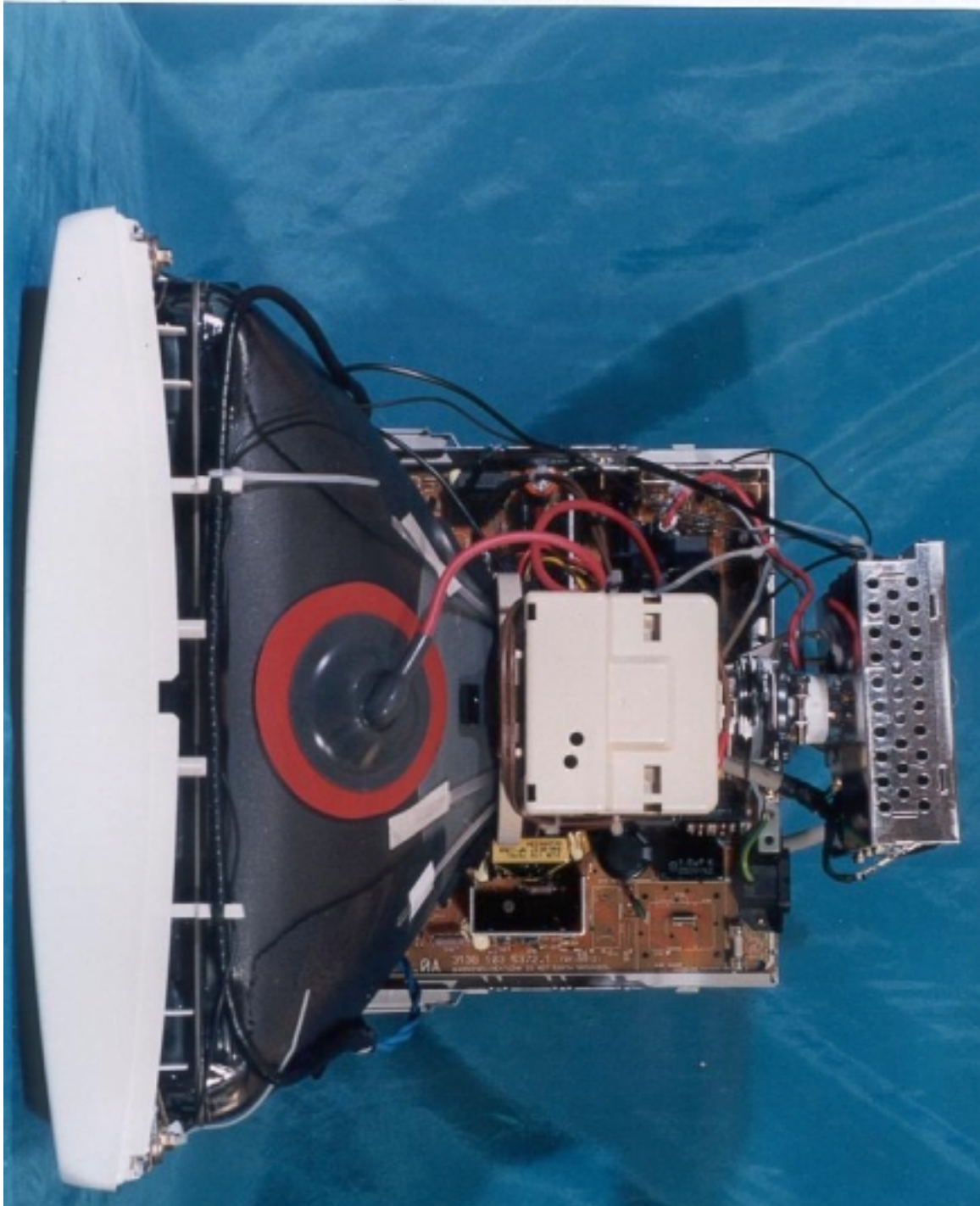
Side View w/o Back Cover

FCC ID: A3KM078



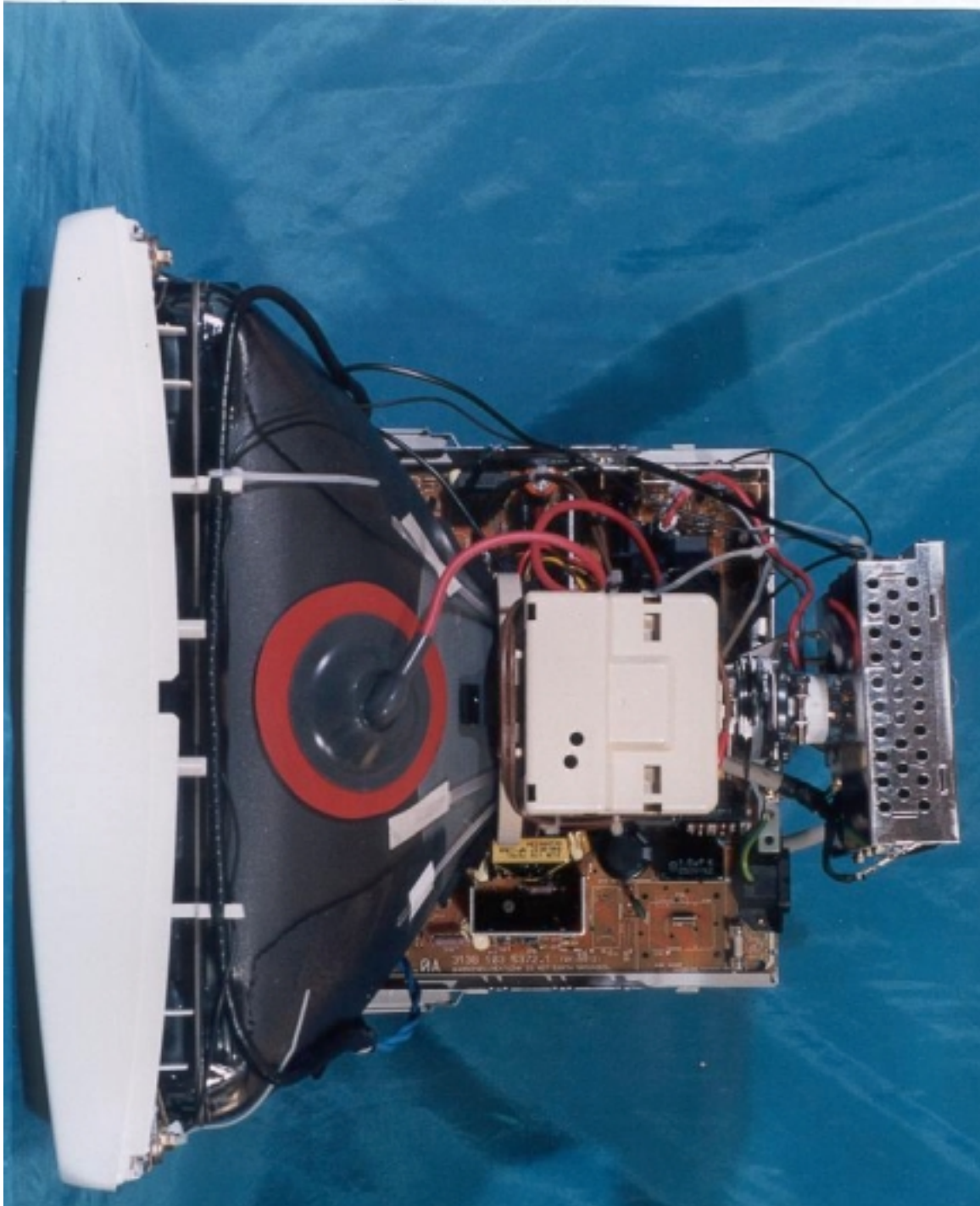
Top View w/o Back Cover

FCC ID: A3KM078



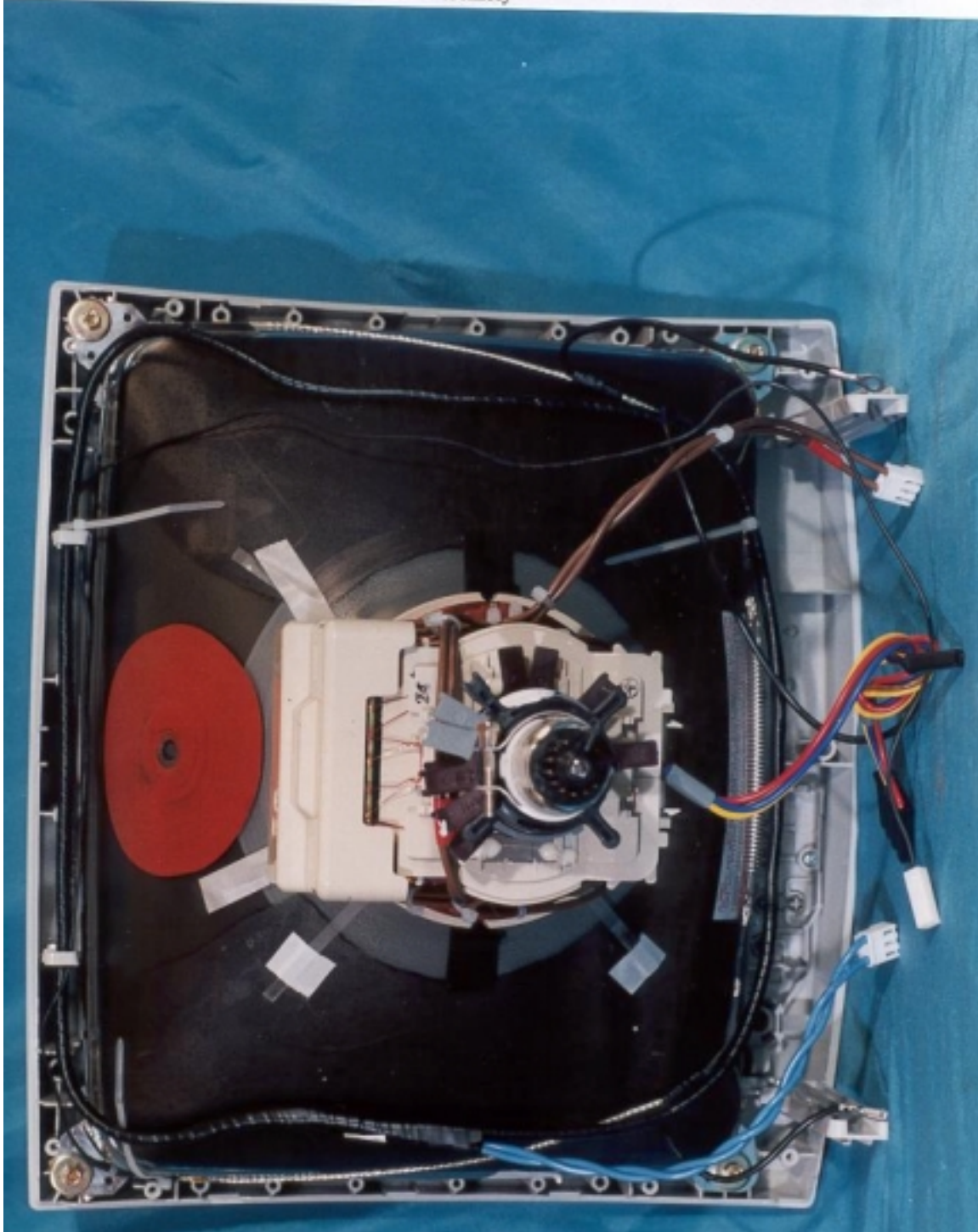
Top View w/o Back Cover

FCC ID: A3KM078



CRT Assembly

FCC ID: A3KM078



IP02-0028-005

5371 0A

3138 103 5372.1 (UK:10312)

WARNING: HEATING IS NOT EACH DROPPED, VARNING: IS PREVENT AREA OF SHOCK-TEST BEFORE TROUBLESHOOTING. VARNING: FÖR HÖGSPÄNNING!

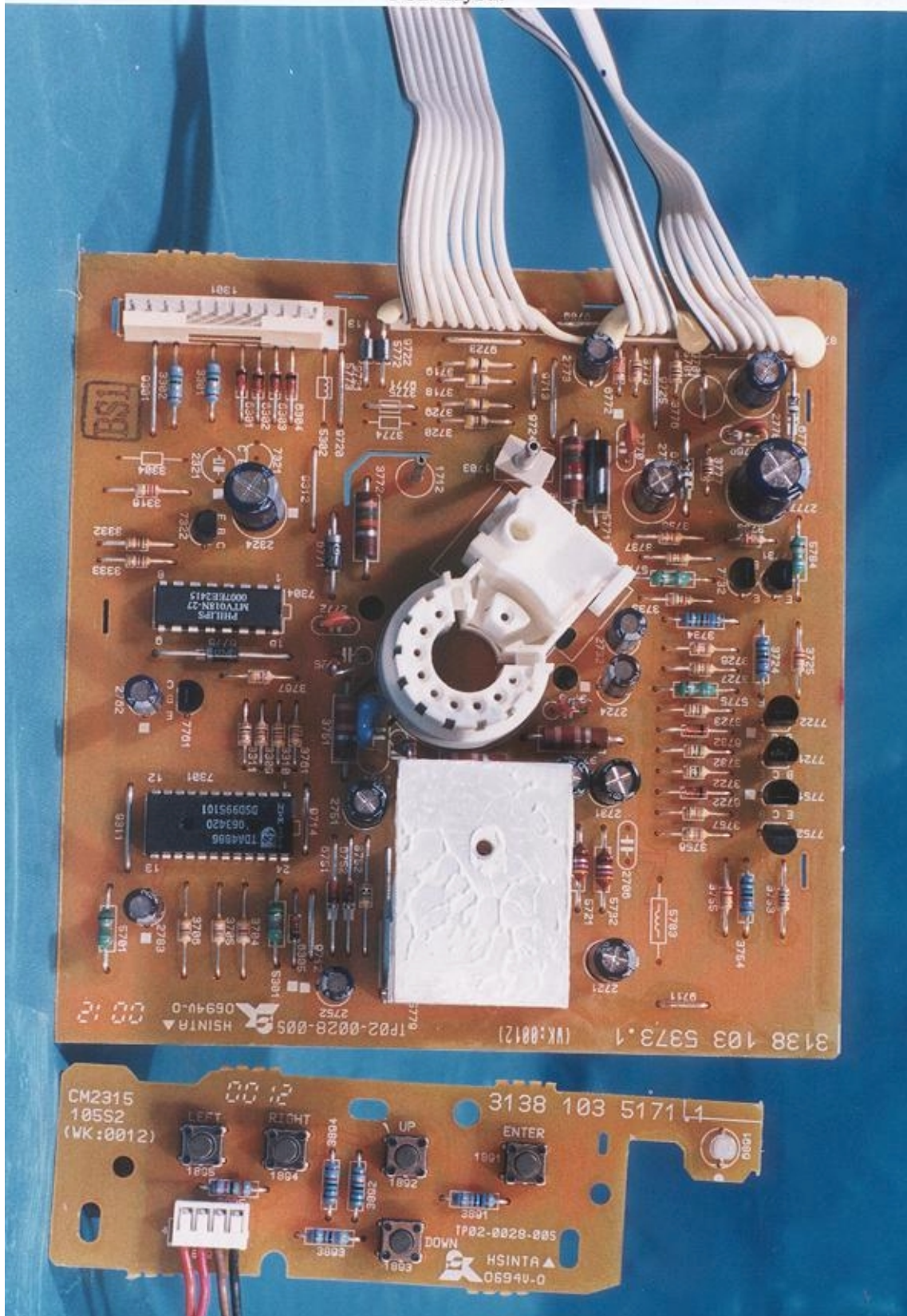
PCB Layout

FCC ID: A3KM078



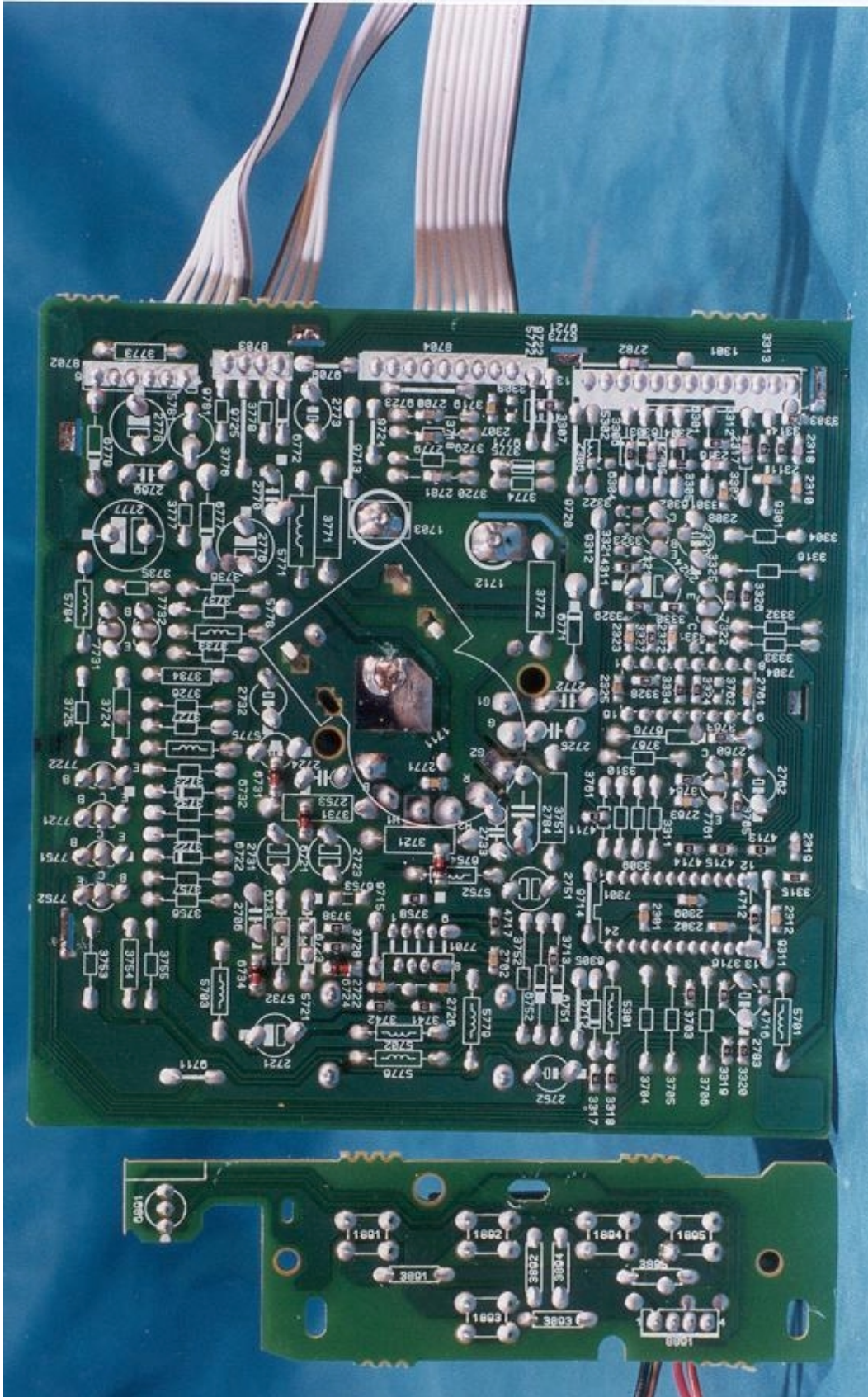
PCB Layout

FCC ID: A3KM078



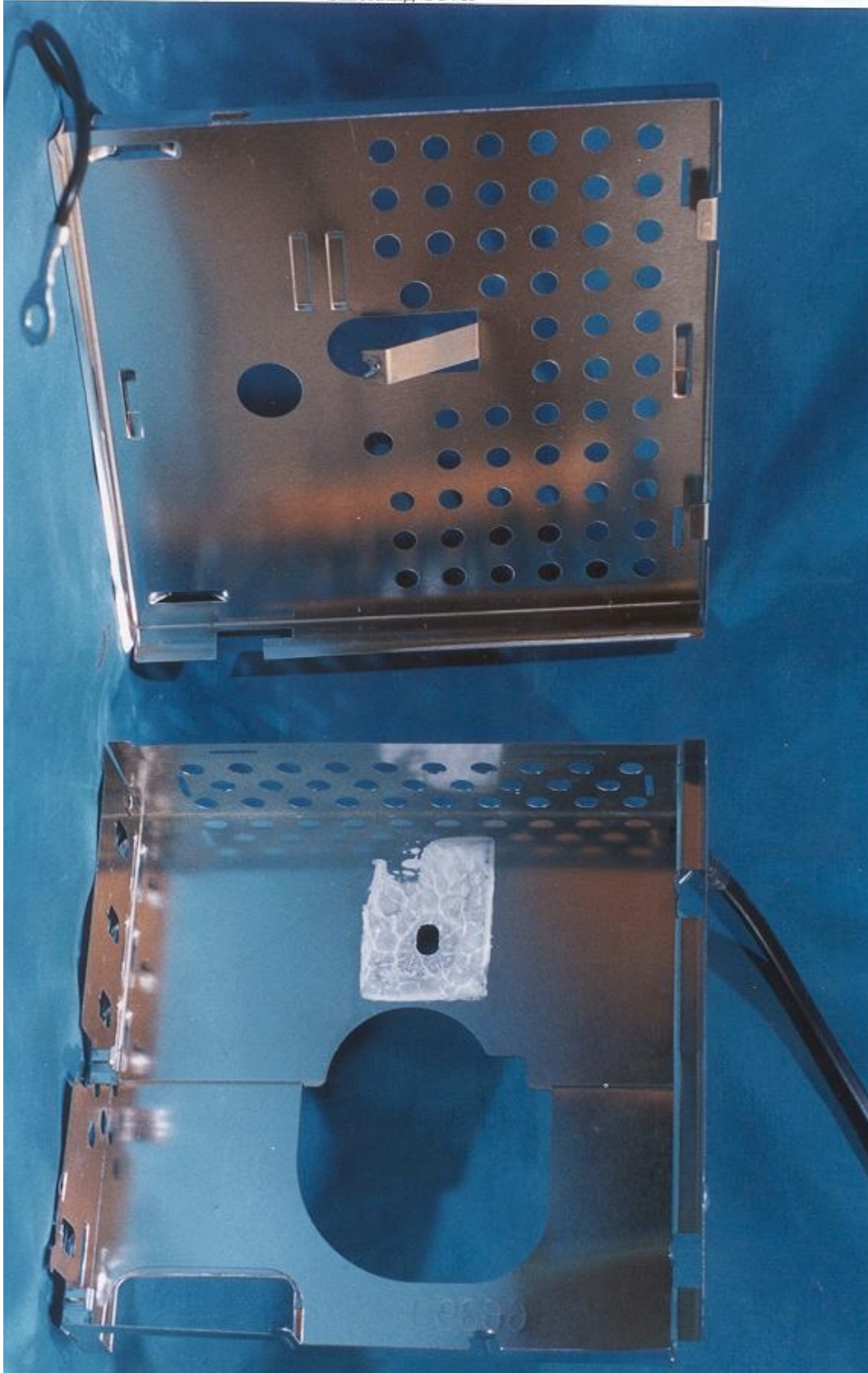
PCB Layout

FCC ID: A3KM078



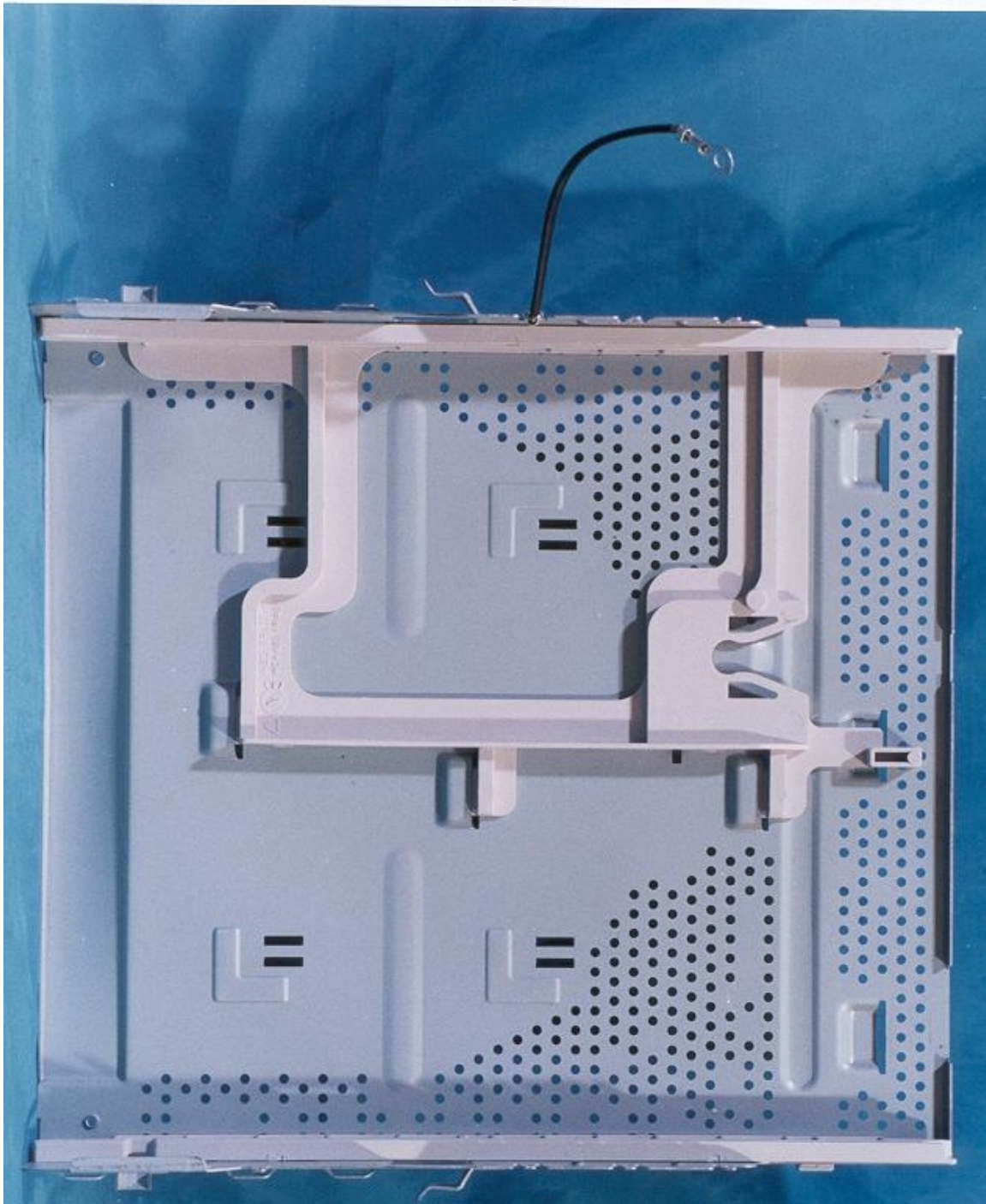
Shielding Cover

FCC ID: A3KM078



Shielding Plate

FCC ID: A3KM078



Power Cord and I/F Cable

