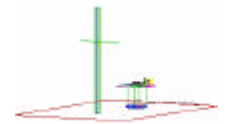


# PCTEST Engineering Laboratory, Inc.

6660-B Dobbin Road • Columbia, MD 21045 • U.S.A.

TEL (410) 290-6652 • FAX (410) 290-6654

<http://www.pctestlab.com>



## CERTIFICATE OF COMPLIANCE

NEC Technologies, Inc.  
1250 N. Arlington Heights Rd., Suite 500  
Itasca, IL 60143-1248  
Attn: Amin Fatani, Senior Engineer  
Compliance Engineering Dept.

Dates of Tests: June 14-15, 1999  
Test Report S/N: B.990607362.A3D  
Test Site: PCTEST Lab, Columbia, MD

FCC ID

**A3DCDR-3001B**

APPLICANT

**NEC TECHNOLOGIES, INC.**

Rule Part(s): FCC Part 15 Subpart B  
Equipment Class: Class B Peripheral Device (JBP)  
EUT Type: IDE Device - Internal CD-ROM Reader (40x)  
Data Transfer Rate(s): 2550 bytes/sec. (Inner side of disc)  
6000 bytes/sec. (Outer side of disc)  
Trade Name: NEC®  
Model: CDR-3001B

This equipment has been shown to be capable of compliance with the applicable technical standards as indicated in the measurement report and was tested in accordance with the measurement procedures specified is ANSI C63.4-1992 (Note Codes: #37).

I attest to the accuracy of data. All measurements reported herein were performed by me or were made under my supervision and are correct to the best of my knowledge and belief. I assume full responsibility for the completeness of these measurements and vouch for the qualifications of all persons taking them.

*PCTEST certifies that no party to this application has been denied the FCC benefits pursuant to Section 5301 of the Anti-Drug Abuse Act of 1988, 21 U.S.C. 853(a)*

  
Randy Ortanez  
President & Chief Engineer

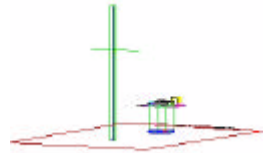
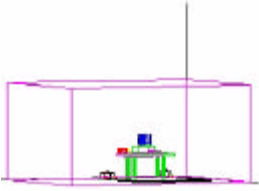


# TABLE OF CONTENTS

---

ATTACHMENT A: COVER LETTER(S)	
ATTACHMENT B: ATTESTATION STATEMENT(S)	
ATTACHMENT C: TEST REPORT	
SCOPE	1
INTRODUCTION (SITE DESCRIPTION)	2
PRODUCTION INFORMATION	3
DESCRIPTION OF TESTS (CONDUCTED)	4
DESCRIPTION OF TESTS (RADIATED)	5
LIST OF SUPPORT EQUIPMENT	6
TEST DATA (CONDUCTED)	7
TEST DATA (RADIATED)	8
SAMPLE CALCULATIONS	9
ACCURACY OF MEASUREMENT	10
LIST OF TEST EQUIPMENT	11
TEST SOFTWARE USED	12
RECOMMENDATION / CONCLUSION	13
ATTACHMENT D: TEST PLOTS	
ATTACHMENT E: FCC ID LABEL & LOCATION	
ATTACHMENT F: BLOCK DIAGRAM(S)	
ATTACHMENT G: SCHEMATIC DIAGRAM(S)	
ATTACHMENT H: TEST SETUP PHOTOGRAPHS	
ATTACHMENT I: EXTERNAL PHOTOGRAPHS	
ATTACHMENT J: INTERNAL PHOTOGRAPHS	
ATTACHMENT K: USER'S MANUAL	

# PRODUCT EVALUATION REPORT



*Scope - Measurement and determination of electromagnetic emissions (EME) of radio frequency devices including intentional and/or unintentional radiators for compliance with the technical rules and regulations of the Federal Communications Commission.*

<b>Company Name:</b>	<b>NEC TECHNOLOGIES, INC.</b>
<b>Address:</b>	<b>1250 N. Arlington Heights Road, Suite 500 Itasca, IL 60143-1248</b>
<b>Attention:</b>	<b>Amin Fatani – Senior Engineer Compliance Engineering Department</b>

- FCC ID: **A3DCDR-3001B**
- Class: B Digital Device / Peripheral (JBP)
- EUT Type: Internal IDE CD-ROM Reader (40x)
- Trade Name: **NEC®**
- Model: **CDR-3001B**
- Max. Data Transfer Rate(s): 2550 bytes/sec. (Inner side of disc)  
6000 bytes/sec. (Outer side of disc)
- Crystal(s)/Oscillator(s): 33.86MHz
- Cable(s): Unshielded IDE ribbon cable (internal)
- Rule Part(s): FCC Part 15 Subpart B
- Test Procedure(s): ANSI C63.4 (1992)
- Dates of Tests: June 14-15, 1999
- Place of Tests: PCTEST Lab, Columbia, MD
- Test Report S/N: B.990607362.A3D

*NOTE: The NEC Model CDR-3001B internal IDE CD-ROM Reader was tested with the internal terminator enabled.*



## 1.1 INTRODUCTION

The measurement procedure described in American National Standard for Methods of Measurement of Radio-Noise Emissions from Low-Voltage Electrical and Electronic Equipment in the Range of 9kHz to 40GHz (ANSI C63.4-1992) was used in determining radiated and conducted emissions emanating from **NEC Internal IDE CD-ROM Reader FCC ID: A3DCDR-3001B**.

These measurement tests were conducted at **PCTEST Engineering Laboratory, Inc.** facility in New Concept Business Park, Guilford Industrial Park, Columbia, Maryland. The site address is 6660-B Dobbin Road, Columbia, MD 21045. The test site is one of the highest points in the Columbia area with an elevation of 390 feet above mean sea level. The site coordinates are 39° 11'15" N latitude and 76° 49'38" W longitude. The facility is 1.5 miles North of the FCC laboratory, and the ambient signal and ambient signal strength are approximately equal to those of the FCC laboratory. There are no FM or TV transmitters within 15 miles of the site. The detailed description of the measurement facility was found to be in compliance with the requirements of § 2.948 according to ANSI C63.4 on October 19, 1992.

## 1.2 PCTEST Location

The map at right shows the location of the PCTEST Lab, its proximity to the FCC Lab, the Columbia vicinity area, the Baltimore-Washington International (BWI) airport, and the city of Baltimore, and the Washington, D.C. area. (see Figure1).

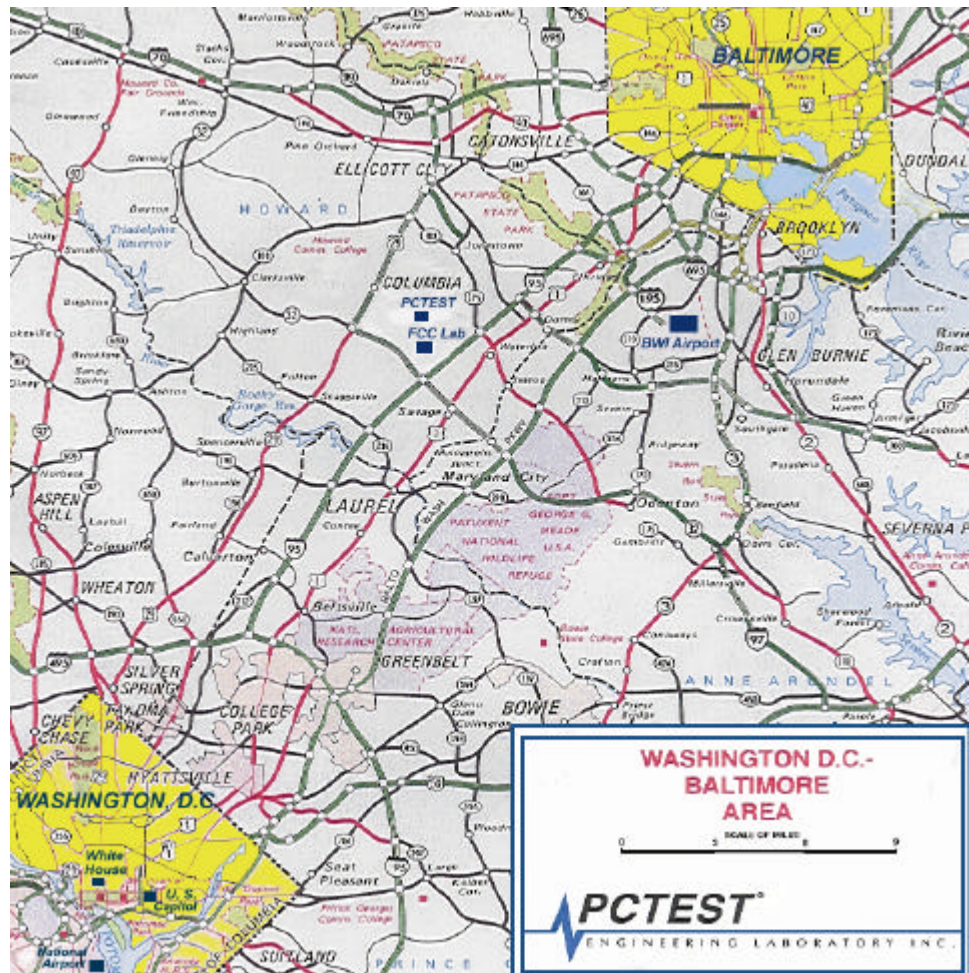


Figure 1. Map of the Greater Baltimore and Metropolitan Washington, D.C. area.

## 2.1 Product Information

---

### 2.2 Equipment Description

The Equipment Under Test (EUT) is the **NEC (Model: CDR-3001B) 40-speed Internal IDE CD-ROM Reader** **FCC ID: A3DCDR-3001B** compatible with Compact Disc formats such as Music CDs, Kodak Multi-session Photo CD™ & Single session Photo CD™.

Crystal/Oscillator(s):	33.86MHz
User Data Capacity:	656M bytes/disc (Mode 1) 748M bytes/disc (Mode 2)
Total No. of Blocks:	336K blocks/disc (Maximum)
User Data Blocks:	2048 bytes/block (Mode 1 & Mode 2, Form 1) 2336 bytes/block (Mode 2) 2328 bytes/block (Mode 2, Form 2)
Data Transfer Rate:	2550K bytes/sec (Inner side of the disc) 6000K bytes/sec (Outer side of the disc)
Burst Transfer Rate:	PIO mode 4, DMA Single word mode 2 DMA Multi word mode 2, Ultra DMA 33 mode 2
Access Time:	85msec (1/3 Stroke read, average)
Memory Buffer:	128K bytes
Sampling Frequency:	44.1kHz
Quantifying Bit Number:	16-bit linear
S/N Ratio:	80 dB
No. of Channels:	2
Front Panel Feature(s):	Headphone Stereo Mini-jack, VOLUME (headphone) Control, BUSY Indicator, Tray Panel, Emergency Eject Hole, Load/Eject Button
Rear Panel (Internal):	Jumper Blocks, Digital Out connector, Line Out connector, 40-pin IDE I/O Bus connector, Power connector
Power Consumption:	5V 1.1A/12V 1.1A
Interface Cable(s):	<i>Unshielded</i> IDE flat ribbon data cable (internal)
Dimensions (WxHxD):	14.8 x 4.2 x 20.8 cm
Weight:	0.93 kg

## 3.1 Description of Tests

### 3.2 Conducted Emissions

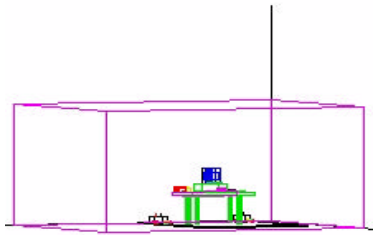


Figure 2. Shielded Enclosure  
Line-Conducted Test Facility

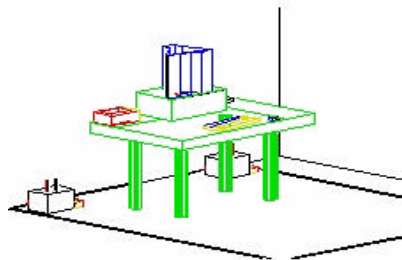
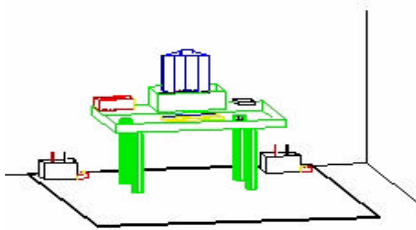


Figure 4. Wooden Table &  
Bonded LISNs

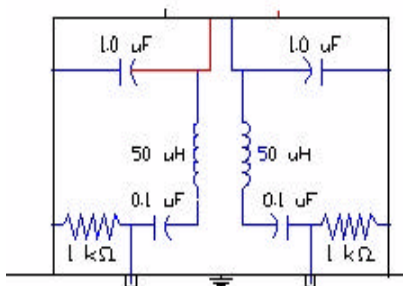


Figure 5. LISN Schematic  
Diagram

The line-conducted facility is located inside a 16'x20'x10' shielded enclosure. It is manufactured by Ray Proof Series 81 (see Figure 2). The shielding effectiveness of the shielded room is in accordance with MIL-Std-285 or NSA 604-05. A 1m. x 1.5m. wooden table 80cm. high is placed 40cm. away from the vertical wall and 1.5m away from the side wall of the shielded room (see Figure 3). Solar Electronics and EMCO Model 3725/2 (10kHz-30MHz) 50Ω/50μH Line-Impedance Stabilization Networks (LISNs) are bonded to the shielded room (see Figure 4). The EUT is powered from the Solar LISN and the support equipment is powered from the EMCO LISN. Power to the LISNs are filtered by a high-current high-insertion loss Ray Proof power line filters (100dB 14kHz-10GHz). The purpose of the filter is to attenuate ambient signal interference and this filter is also bonded to the shielded enclosure. All electrical cables are shielded by braided tinned copper zipper tubing with inner diameter of 1/2". If the EUT is a DC-powered device, power will be derived from the source power supply it normally will be powered from and this supply lines will be connected to the Solar LISN. LISN schematic diagram is shown in Figure 5. All interconnecting cables more than 1 meter were shortened by non-inductive bundling (serpentine fashion) to a 1-meter length. Sufficient time for the EUT, support equipment, and test equipment was allowed in order for them to warm up to their normal operating condition. The RF output of the LISN was connected to the spectrum analyzer to determine the frequency producing the maximum EME from the EUT. The spectrum was scanned from 450kHz to 30MHz with 20 msec. sweep time. The frequency producing the maximum level was reexamined using EMI/ Field Intensity Meter and Quasi-Peak adapter. The detector function was set to CISPR quasi-peak mode. The bandwidth of the receiver was set to 10 kHz. The EUT, support equipment, and interconnecting cables were arranged and manipulated to maximize each EME emission. Each emission was maximized by: switching power lines; varying the mode of operation or resolution; clock or data exchange speed; scrolling H pattern to the EUT and/or support equipment, and powering the monitor from the floor mounted outlet box and the computer aux AC outlet, if applicable; whichever determined the worst-case emission. Photographs of the worst-case emission can be seen in Attachment H. Each EME reported was calibrated using the HP8640B signal generator.

## 3.1 Description of Tests (continued)

### 3.3 Radiated Emissions

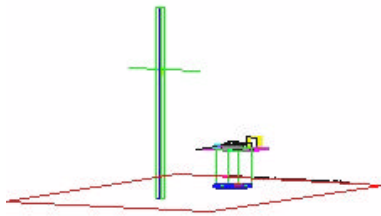


Figure 6. 3-Meter Test Site

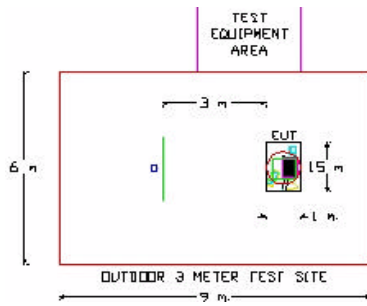


Figure 7. Dimensions of Outdoor Test Site

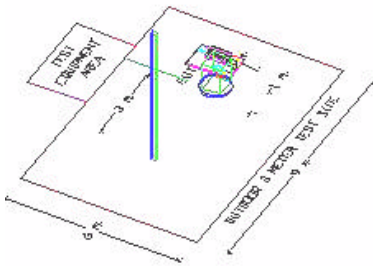


Figure 8. Turntable and System Setup

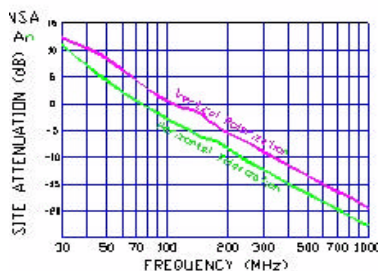


Figure 9. Normalized Site Attenuation Curves (H&V)

Preliminary measurements were made indoors at 1 meter using broadband antennas, broadband amplifier, and spectrum analyzer to determine the frequency producing the maximum EME. Appropriate precaution was taken to ensure that all EME from the EUT were maximized and investigated. The system configuration, clock speed, mode of operation or video resolution, turntable azimuth with respect to the antenna were noted for each frequency found. The spectrum was scanned from 30 to 200 MHz using biconical antenna and from 200 to 1000 MHz using log-spiral antenna. Above 1 GHz, linearly polarized double ridge horn antennas were used.

Final measurements were made outdoors at 3-meter test range using Roberts™ Dipole antennas or horn antenna (see Figure 6). The test equipment was placed on a wooden and plastic bench situated on a 1.5 x 2 meter area adjacent to the measurement area (see Figure 7). Sufficient time for the EUT, support equipment, and test equipment was allowed in order for them to warm up to their normal operating condition. Each frequency found during pre-scan measurements was re-examined and investigated using EMI/Field Intensity Meter and Quasi-Peak Adapter. The detector function was set to CISPR quasi-peak mode and the bandwidth of the receiver was set to 100kHz or 1 MHz depending on the frequency or type of signal.

The half-wave dipole antenna was tuned to the frequency found during preliminary radiated measurements. The EUT, support equipment and interconnecting cables were re-configured to the set-up producing the maximum emission for the frequency and were placed on top of a 0.8-meter high non-metallic 1 x 1.5 meter table (see Figure 8). The EUT, support equipment, and interconnecting cables were re-arranged and manipulated to maximize each EME emission. The turntable containing the system was rotated; the antenna height was varied 1 to 4 meters and stopped at the azimuth or height producing the maximum emission. Each emission was maximized by: varying the mode of operation or resolution; clock or data exchange speed; scrolling H pattern to the EUT and/or support equipment, and powering the monitor from the floor mounted outlet box and the computer aux AC outlet, if applicable; and changing the polarity of the antenna, whichever determined the worst-case emission. Photographs of the worst-case emission can be seen in Attachment H. Each EME reported was calibrated using the HP8640B signal generator. The Theoretical Normalized Site Attenuation Curves for both horizontal and vertical polarization are shown in Figure 9.

## 4.1 Support Equipment Used

---

1. <b>NEC</b> Mid-Tower PC (with on-board video) CREATIVE Sound Card <b>NEC Int. CD-ROM Reader</b>	FCC ID: B7ZA105-MT 1.8 m. unshielded AC power cord FCC DoC Model: AWE64 SoundBlaster <b>FCC ID: A3DCDR-3001B</b> 0.4 m. unshielded IDE ribbon cable (internal) 0.4 m. unshielded LINE OUT wire 0.5 m. unshielded DIGITAL OUT wire (unterminated)	S/N: 5305699UN   <b>(EUT)</b>
2. <b>NEC</b> Monitor	FCC ID: A3DJC-1537VMA 1.8 m. unshielded AC power cord 1.0 m. shielded D-Sub cable	S/N: AZ002
3. <b>NEC</b> P3200 Printer	FCC ID: B7ZP3200 1.8 m. unshielded AC power cord 1.0 m. shielded cable (bundled)	S/N: 562300406
4. LOGITECH Mouse	FCC ID: DZL211029 1.6 m. shielded cable	S/N: LZC84718122
5. <b>NEC</b> Keyboard	FCC ID: AQ6-MTN56Z15 1.6 m. shielded cable	S/N: 60943124
6. EPSON Modem	FCC ID: BKM552C202A 1.8 m. unshielded DC power cord 1.2 m. shielded serial cable	S/N: 010289
7. UNITED Headphone	Model: n/a	1.2 m. shielded cable
8. ADVENT Speakers (x2)	Model: S4898 1.8 m. unshielded DC power cord 1.6 m. shielded cable	S/N: 11-0005650

*(See "Attachment H - Test Setup Photographs" for actual system test setup.)*



## 5.1 LINE-CONDUCTED TEST DATA

---

### 5.2 Conducted Emissions

(See Data under PLOTS – Attachment D)

**NOTES:**

1. All modes of operation were investigated and the worst-case emissions are reported.
2. The limit for Class B device is 250 $\mu$ V from 450kHz to 30MHz.
3. Line A = Phase; Line B = Neutral
4. Deviations to the Specifications: None

---

\* All readings are calibrated by HP8640B signal generator with accuracy traceable to the National Institute of Standards and Technology (formerly NBS).

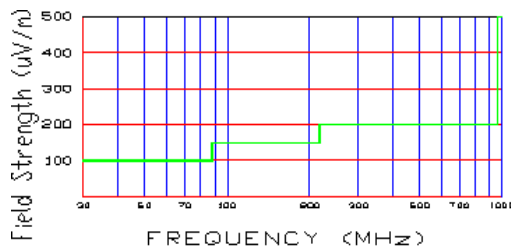
\*\* Measurements using CISPR quasi-peak mode.

## 6.1 RADIATED TEST DATA

### 6.3.1 Radiated Emissions

FREQ. (MHz)	Level* (dBm)	AFCL** (dB)	POL (H/V)	Height (m)	Azimuth (° angle)	F/S ( $\mu$ V/m)	Margin*** (dB)
55.5	- 78.3	4.1	V	3.0	10	43.7	- 7.2
132.6	- 81.9	12.4	H	2.2	180	75.0	- 6.0
190.4	- 85.3	16.0	V	2.0	30	76.7	- 5.8
420.5	- 90.2	24.2	V	1.3	210	112.2	- 5.0
480.3	- 92.6	25.6	V	1.2	10	100.0	- 6.0
555.7	- 92.2	27.2	V	1.1	20	125.9	- 4.0

Table 1. Radiated Measurements at 3-meters.



**NOTES:**

1. All modes of operation were investigated and the worst-case emissions are reported.
2. The radiated limits are shown on Figure 10. Above 1GHz the limit is 500  $\mu$ V/m.

Figure 10. Limits at 3 meters

\* All readings are calibrated by HP8640B signal generator with accuracy traceable to the National Institute of Standards and Technology (formerly NBS).

\*\* AFCL = Antenna Factor (Roberts dipole) and Cable Loss (30 ft. RG58C/U).

\*\*\* Measurements using CISPR quasi-peak mode. Above 1GHz, peak detector function mode is used using a resolution bandwidth of 1MHz and a video bandwidth of 1MHz. The peak level complies with the average limit. Peak mode is used with linearly polarized horn antenna and low-loss microwave cable.

## 7.1 Sample Calculations

---

$$\text{dB}\mu\text{V} = 20 \log_{10} (\mu\text{V}/\text{m})$$
$$\text{dB}\mu\text{V} = \text{dBm} + 107$$

### 7.2 Example 1:

#### @ 20.3 MHz

Class B limit	= 250 $\mu\text{V}$ = 47.96 dB $\mu\text{V}$
Reading	= - 67.8 dBm (calibrated level)
Convert to dB $\mu\text{V}$	= - 67.8 + 107 = 39.2 dB $\mu\text{V}$
$10^{(39.2/20)}$	= 91.2 $\mu\text{V}$
Margin	= 39.2 - 47.96 = - 8.76
	= <b>8.8 dB below limit</b>

### 7.3 Example 2:

#### @ 66.7 MHz

Class B limit	= 100 $\mu\text{V}/\text{m}$ = 47.96 dB $\mu\text{V}/\text{m}$
Reading	= - 76.0 dBm (calibrated level)
Convert to dB $\mu\text{V}/\text{m}$	= - 76.0 + 107 = 31.0 dB $\mu\text{V}/\text{m}$
Antenna Factor + Cable Loss	= 5.8 dB
Total	= 36.8 dB $\mu\text{V}/\text{m}$
Margin	= 36.8 - 40.0 = - 3.2
	= <b>3.2 dB below limit</b>

## 8.1 Accuracy of Measurement

### 8.2 Measurement Uncertainty Calculations:

The measurement uncertainties stated were calculated in accordance with the requirements of NIST Technical Note 1297 and NIS 81 (1994).

Contribution (Line Conducted)	Probability Distribution	Uncertainty ( $\pm$ dB)	
		9kHz-150MHz	150-30MHz
Receiver specification	Rectangular	1.5	1.5
LISN coupling specification	Rectangular	1.5	1.5
Cable and input attenuator calibration	Normal (k=2)	0.3	0.5
Mismatch: Receiver VRC $\Gamma_1 = 0.03$ LISN VRC $\Gamma_R = 0.8$ (9kHz) 0.2 (30MHz) Uncertainty limits $20\text{Log}(1 \pm \Gamma_1 \Gamma_R)$	U-Shaped	0.2	0.35
System repeatability	Std. deviation	0.2	0.05
Repeatability of EUT		-	-
Combined standard uncertainty	Normal	1.26	1.30
Expanded uncertainty	Normal (k=2)	2.5	2.6

Calculations for 150kHz to 30MHz:

$$u_C(y) = \sqrt{\sum_{i=1}^m u_i^2(y)} = \pm \sqrt{\frac{1.5^2 + 1.5^2}{3} + \left(\frac{0.5}{2}\right)^2 + 0.35} = \pm 1.298\text{dB}$$

$$U = 2U_C(y) = \pm 2.6\text{dB}$$

Contribution (Radiated Emissions)	Probability Distribution	Uncertainties ( $\pm$ dB)	
		3 m	10 m
Ambient Signals		-	-
Antenna factor calibration	Normal (k=2)	$\pm 1.0$	$\pm 1.0$
Cable loss calibration	Normal (k=2)	$\pm 0.5$	$\pm 0.5$
Receiver specification	Rectangular	$\pm 1.5$	$\pm 1.5$
Antenna directivity	Rectangular	+ 0.5 / - 0	+ 0.5
Antenna factor variation with height	Rectangular	$\pm 2.0$	$\pm 0.5$
Antenna phase centre variation	Rectangular	0.0	$\pm 0.2$
Antenna factor frequency interpolation	Rectangular	$\pm 0.25$	$\pm 0.25$
Measurement distance variation	Rectangular	$\pm 0.6$	$\pm 0.4$
Site imperfections	Rectangular	$\pm 2.0$	$\pm 2.0$
Mismatch: Receiver VRC $\Gamma_1 = 0.2$ Antenna VRC $\Gamma_R = 0.67$ (Bi) 0.3 (Lp) Uncertainty limits $20\text{Log}(1 \pm \Gamma_1 \Gamma_R)$	U-Shaped	+ 1.1 - 1.25	$\pm 0.5$
System repeatability	Std. Deviation	$\pm 0.5$	$\pm 0.5$
Repeatability of EUT		-	-
Combined standard uncertainty	Normal	+ 2.19 / - 2.21	+ 1.74 / - 1.72
Expanded uncertainty U	Normal (k=2)	+ 4.38 / - 4.42	+ 3.48 / - 3.44

Calculations for 3m biconical antenna. Coverage factor of k=2 will ensure that the level of confidence will be approximately 95%, therefore:

$$U=2u_C(y) = 2 \times \pm 2.19 = \pm 4.38\text{dB}$$

## 9.1 Test Equipment

9.2 Type	Model	Cal. Due Date	S/N
Microwave Spectrum Analyzer	HP 8566B (100Hz-22GHz)	08/15/99	3638A08713
Microwave Spectrum Analyzer	HP 8566B (100Hz-22GHz)	04/17/00	2542A11898
Spectrum Analyzer/Tracking Gen.	HP 8591A (100Hz-1.8GHz)	06/03/00	3144A02458
Signal Generator	HP 8640B (500Hz-1GHz)	06/03/00	2232A19558
Signal Generator	HP 8640B (500Hz-1GHz)	08/09/99	1851A09816
Signal Generator	Rohde & Schwarz (0.1-1000MHz)	09/11/99	894215/012
Ailtech/Eaton Receiver	NM 37/57A-SL (30-1000MHz)	04/12/00	0792-03271
Ailtech/Eaton Receiver	NM 37/57A (30-1000MHz)	03/11/00	0805-03334
Ailtech/Eaton Receiver	NM 17/27A (0.1-32MHz)	09/17/99	0608-03241
Quasi-Peak Adapter	HP 85650A	08/15/99	2043A00301
Ailtech/Eaton Adapter	CCA-7 CISPR/ANSI QP Adapter	03/11/00	0194-04082
RG58 Coax Test Cable	No. 167		n/a
Harmonic/Flicker Test System	HP 6841A (IEC 555-2/3)		3531A00115
Broadband Amplifier (2)	HP 8447D		1145A00470, 1937A03348
Broadband Amplifier	HP 8447F		2443A03784
Transient Limiter	HP 11947A (9kHz-200MHz)		2820A00300
Horn Antenna	EMCO Model 3115 (1-18GHz)		9704-5182
Horn Antenna	EMCO Model 3115 (1-18GHz)		9205-3874
Horn Antenna	EMCO Model 3116 (18-40GHz)		9203-2178
Biconical Antenna (4)	Eaton 94455/Eaton 94455-1/Singer 94455-1/Compliance Design 1295, 1332, 0355		
Log-Spiral Antenna (3)	Ailtech/Eaton 93490-1		0608, 1103, 1104
Roberts Dipoles	Compliance Design (1 set)		
Ailtech Dipoles	DM-105A (1 set)		33448-111
EMCO LISN	3816/2		1079
EMCO LISN	3816/2		1077
EMCO LISN	3725/2		2009
Microwave Preamplifier 40dB Gain	HP 83017A (0.5-26.5GHz)		3123A00181
Microwave Cables	MicroCoax (1.0-26.5GHz)		
Ailtech/Eaton Receiver	NM37/57A-SL		0792-03271
Spectrum Analyzer	HP 8594A		3051A00187
Spectrum Analyzer (2)	HP 8591A		3034A01395, 3108A02053
Modulation Analyzer	HP 8901A		2432A03467
NTSC Pattern Generator	Leader 408		0377433
Noise Figure Meter	HP 8970B		3106A02189
Noise Figure Meter	Ailtech 7510		TE31700
Noise Generator	Ailtech 7010		1473
Microwave Survey Meter	Holaday Model 1501 (2.450GHz)		80931
Digital Thermometer	Extech Instruments 421305		426966
Attenuator	HP 8495A (0-70dB) DC-4GHz		
Bi-Directional Coax Coupler	Narda 3020A (50-1000MHz)		
Shielded Screen Room	RF Lindgren Model 26-2/2-0		6710 (PCT270)
Shielded Semi-Anechoic Chamber	Ray Proof Model S81		R2437 (PCT278)
Environmental Chamber	Associated Systems Model 1025 (Temperature/Humidity)		PCT285

\* Calibration traceable to the National Institute of Standards and Technology (NIST).

## 10.1 Test Software Used

---

```
10  CLS:COLOR 7,0
20  FOR I = 1 TO 80
30  PRINT H;
40  NEXT I
50  FOR K= 1 TO 25
60  LPRINT H;
70  NEXT K
80  OPEN COM1:1200,N,8,1,CS0,DS0" FOR OUTPUT AS #1
90  PRINT#1,ATDT,0123456789"
100 CLOSE:GOTO 20
```

NOTE: This is a sample of the basic program used during the test. However, during testing a different software program may be used; whichever determines the worst-case condition. In addition, the program used also depends on the number and type of devices being tested.

The EUT was exercised by copying CD Data to the hard drive.

## 11.1 Recommendation/Conclusion

---

The data collected shows that the **NEC (Model: CDR-3001B) Internal IDE CD-ROM Reader FCC ID: A3DCDR-3001B** complies with §15.107 and §15.109 of the FCC Rules. The highest emission observed, with a minimum margin to the specifications, was at 0.570 MHz for conducted emissions with a margin of 7.64 dB, and at 555.7 MHz for radiated emissions with a margin of 4.0 dB.

No modifications were made to the device.