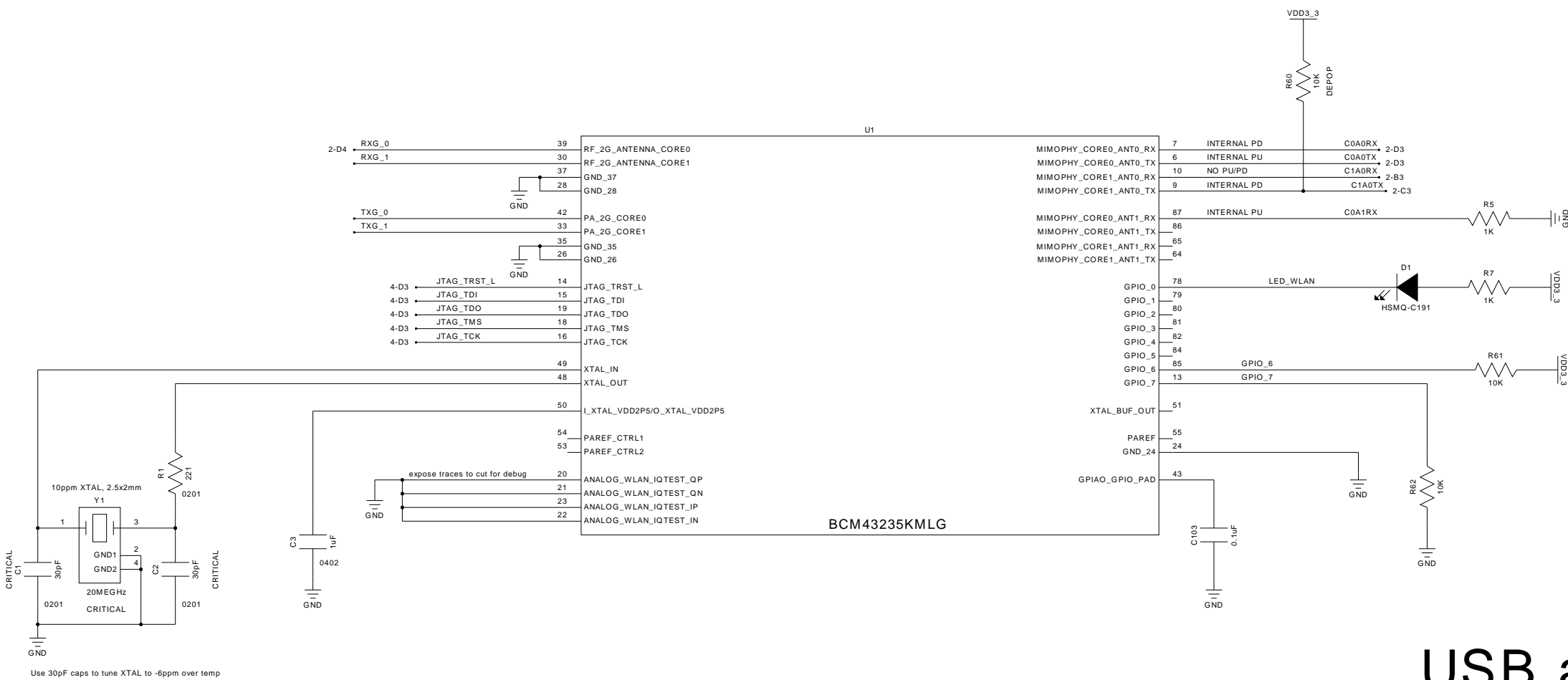


Strap Pin Configurations		
Pin Name	Chip Default	Description
mimophy_core1_ant0_tx	0	0=NO SFLASH, 1=SFLASH PRESENT
mimophy_core0_ant0_rx	0	1=Atmel SFLASH, 0=ST SFLASH
mimophy_core0_ant0_tx	1	0=NO OTP, 1=OTP PRESENT
mimophy_core0_ant1_tx	1	0=HSIC mode, 1=USB mode
mimophy_core0_ant1_rx	1	0=backplane at 96(98.4)MHz, 1=backplane at 120(123)MHz

GPIO[7:6]=01=ARM boots normally
GPIO[7:6]=00=ARM held in reset

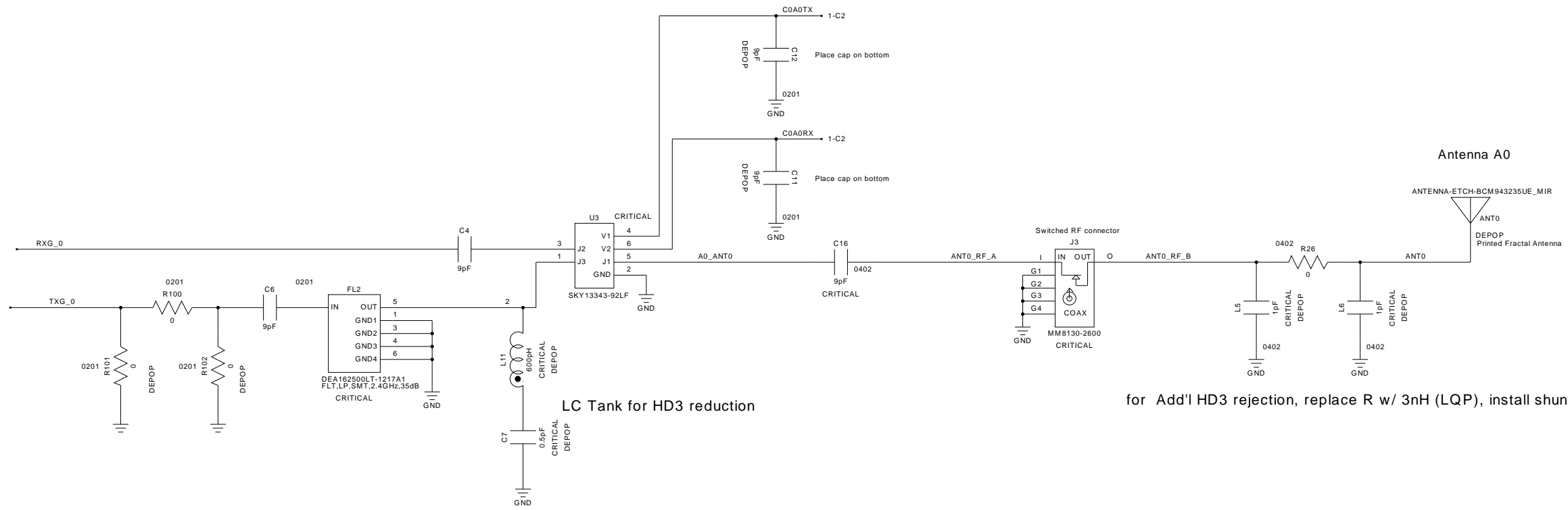
Memory on BCM43235 chip (consult BCM43235 datasheet for details):
 - OTP used for MAC address, board flags and chipID (2Kbit)
 - ROM used for ARM bootcode (256kByte).
 - RAM used for ARM runtime (448kByte).



USB and Control Lines

PCB Layout Agile p/n	PCB1
PRINTED CIRCUIT BOARD	
BRCMPN=200-119299-0020	
Schematic Agile p/n	DOC1
DOCUMENT	
BRCMPN=824-119299-0000	
Top Shield Agile p/n	NON PCB MOUNT PART
BRCMPN=210-119299-0000	

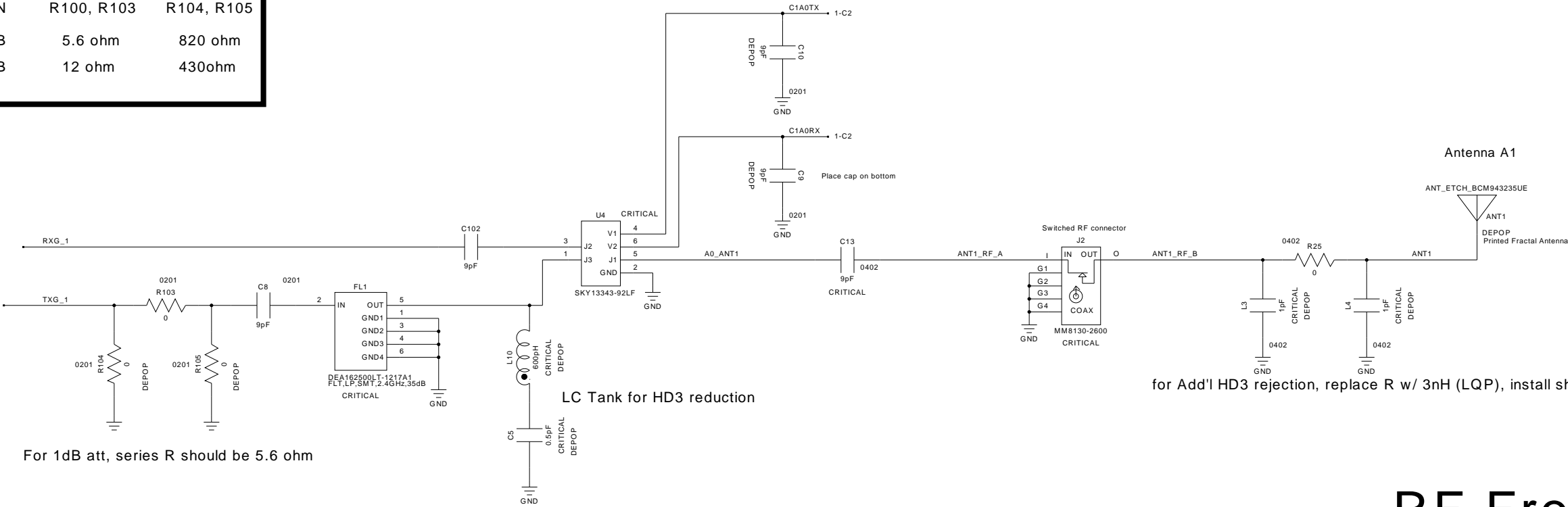
Approvals		 Company Confidential		
Designer	Date	SIZE B	TITLE BCM943235U	
Reviewer	Date			
Designer	Date	John So		Drawing Number 824-119299-0000
Reviewer	Date	DATE 6-4-2010		Version P204
		SHEET 1 OF 3		



LC Tank for HD3 reduction

for Add'l HD3 rejection, replace R w/ 3nH (LQP), install shunt 1pF caps

Pi NTWK	R101, R102
ATTN	R100, R103 R104, R105
1dB	5.6 ohm 820 ohm
2dB	12 ohm 430ohm



LC Tank for HD3 reduction

for Add'l HD3 rejection, replace R w/ 3nH (LQP), install shunt 1pF caps

For 1dB att, series R should be 5.6 ohm

RF Front End

Broadcom

Company Confidential

SIZE	TITLE	BCM943235U	
B			
DATE	6-4-2010	SHEET	2 OF 3

