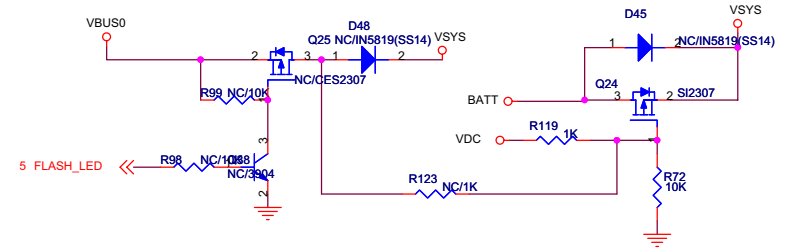
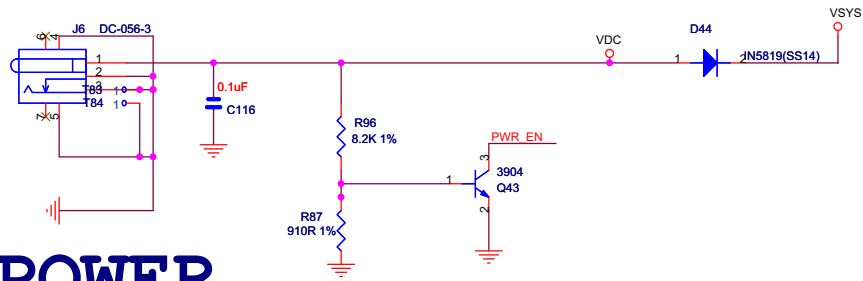
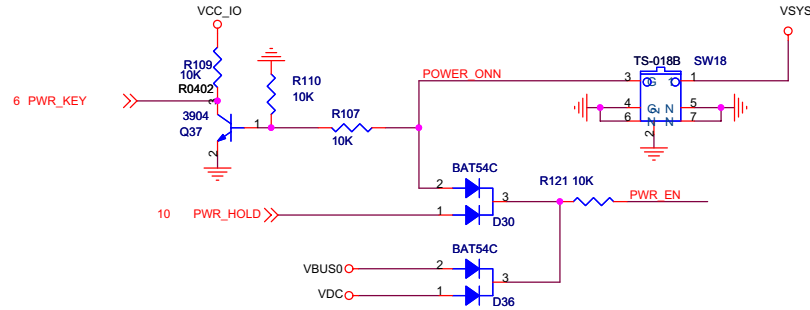
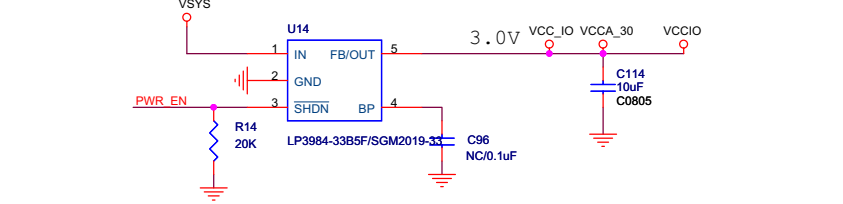
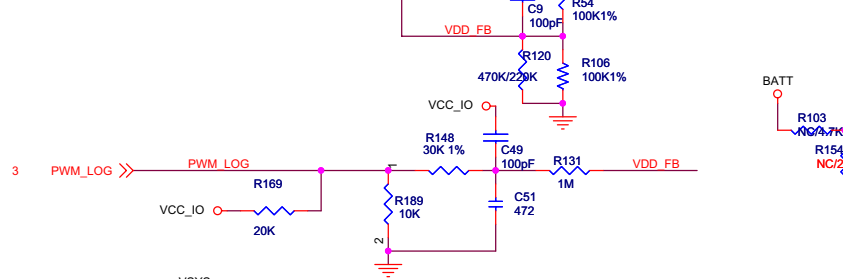
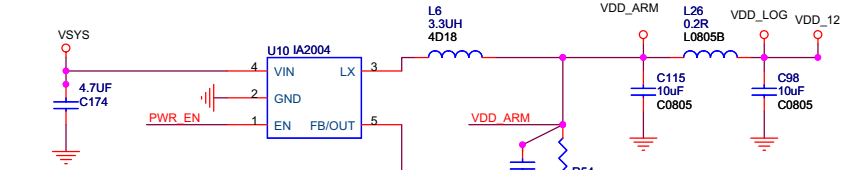
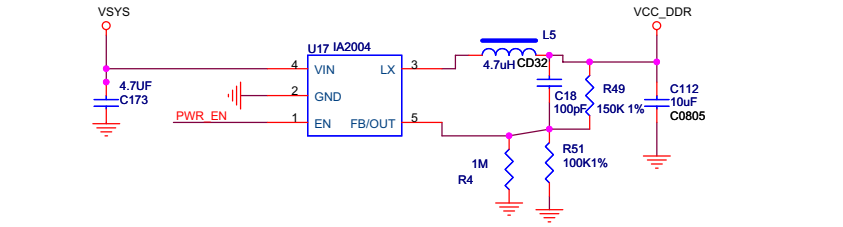
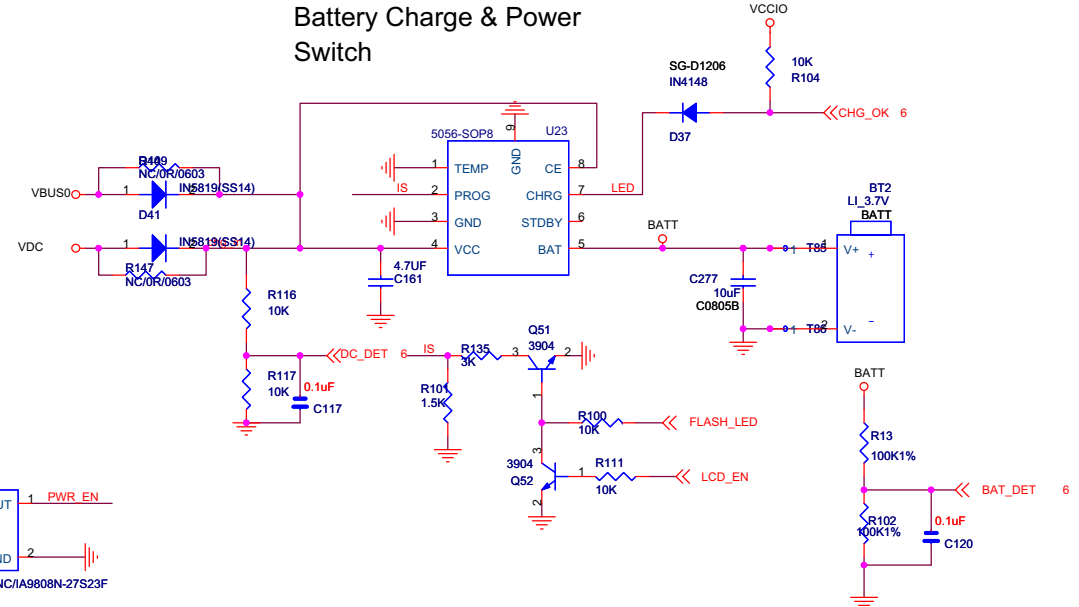
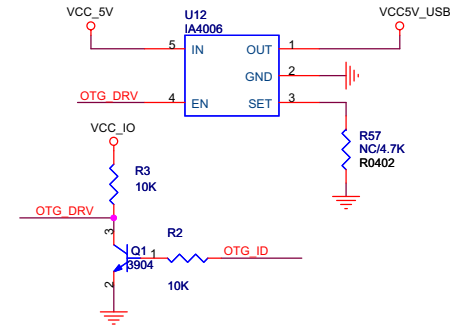
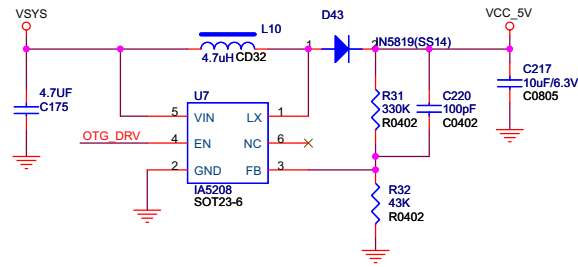


# POWER



## Battery Charge & Power Switch

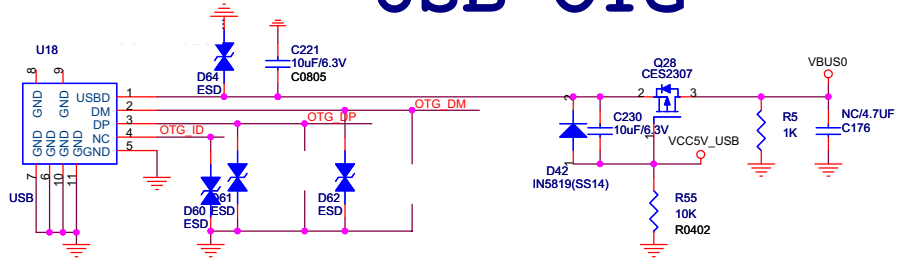




HOST_DP	↔	HOST_DP	15
HOST_DM	↔	HOST_DM	15
BAT_DET	↔	BAT_DET	5
ADKEY_IN	↔	ADKEY_IN	14
RESET	↔	RESET	6,8
FLASH_LED	↔	FLASH_LED	6,8

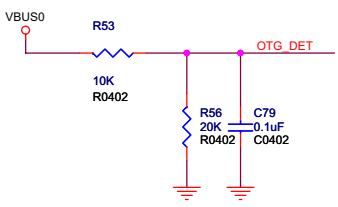
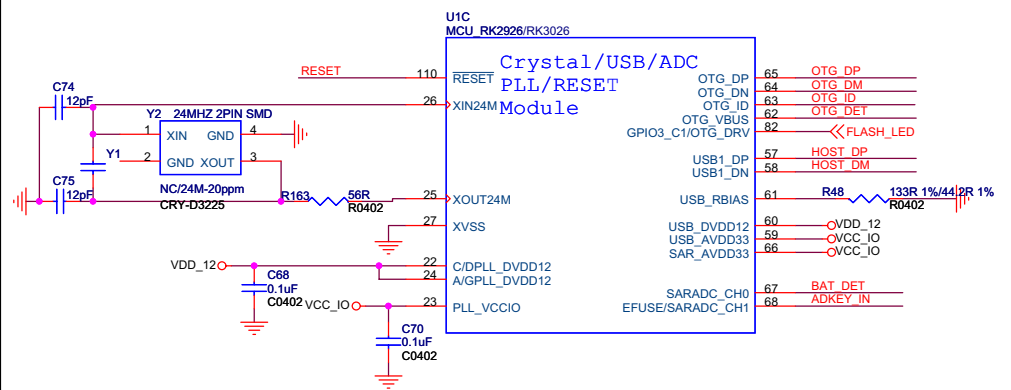
OTG POWER

# USB OTG

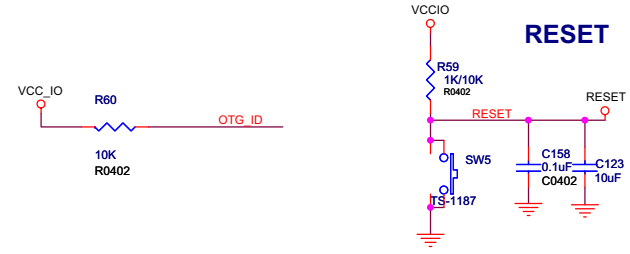


USB OTG CONNECTOR

Note:  
Adjusted the load capacitance according to the crystal specification.



USB\_DET

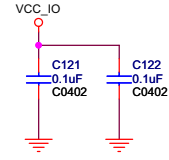
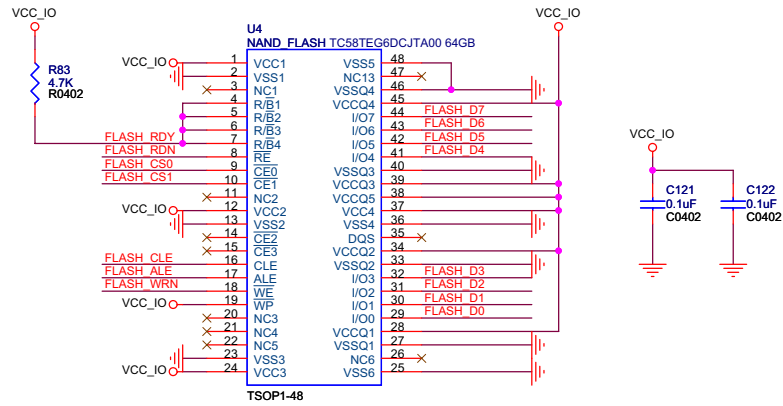


RESET

VIBRATION



# NAND FLASH



U1D  
MCU\_RK2926/RK3026

## SDMMC Module

GPIO1_C2/SDMMC_D0	114	SDMMC D0
GPIO1_C3/SDMMC_D1	113	SDMMC D1
GPIO1_C4/SDMMC_D2	112	SDMMC D2
GPIO1_C5/SDMMC_D3	111	SDMMC D3
GPIO1_C0/SDMMC_CLK	116	SDMMC CLK
GPIO1_B7/SDMMC_CMD	127	SDMMC CMD

RK2926/RK3026

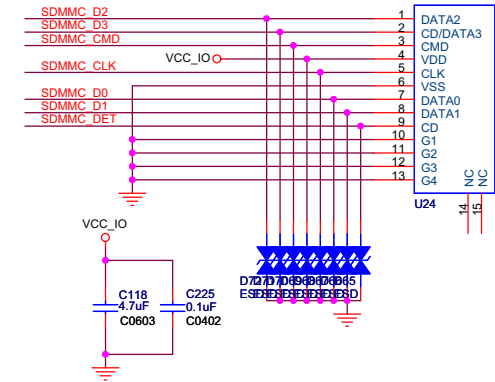
U1E  
MCU\_RK2926/RK3026

## NAND FLASH Module

GPIO1_D0/FLASH_D0	93	FLASH D0
GPIO1_D1/FLASH_D1	94	FLASH D1
GPIO1_D2/FLASH_D2	95	FLASH D2
GPIO1_D3/FLASH_D3	96	FLASH D3
GPIO1_D4/FLASH_D4	97	FLASH D4
GPIO1_D5/FLASH_D5	98	FLASH D5
GPIO1_D6/FLASH_D6	99	FLASH D6
GPIO1_D7/FLASH_D7	100	FLASH D7
GPIO2_A0/FLASH_ALE	102	FLASH ALE
GPIO2_A1/FLASH_CLE	103	FLASH CLE
GPIO2_A2/FLASH_WRN	104	FLASH WRN
GPIO2_A3/FLASH_RDN	105	FLASH RDN
GPIO2_A4/FLASH_RDY	106	FLASH RDY
GPIO2_A6/FLASH_CS0	107	FLASH CS0
GPIO2_A7/FLASH_CS1	92	FLASH CS1
GPIO2_A7/FLASH_DQS	109	SDMMC DET

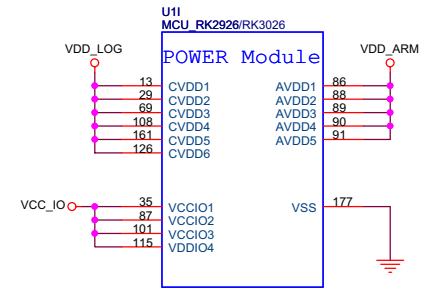
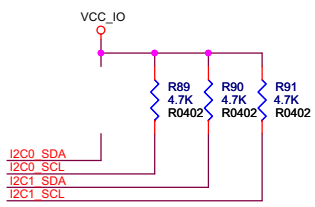
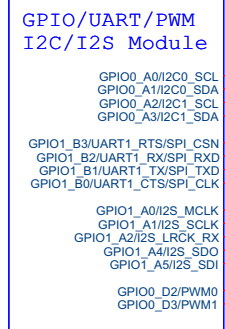
# TF CARD

SDC009-22-D1  
TF\_SD\_SOCKET



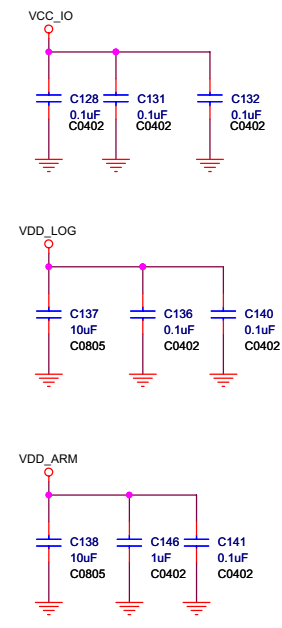
- 1 MARK1
- 1 MARK2
- 1 MARK3
- 1 MARK4

U1G  
MCU\_RK2926/RK3026



Note:  
Place these filter capacitors under CPU.

RK2926/RK3026





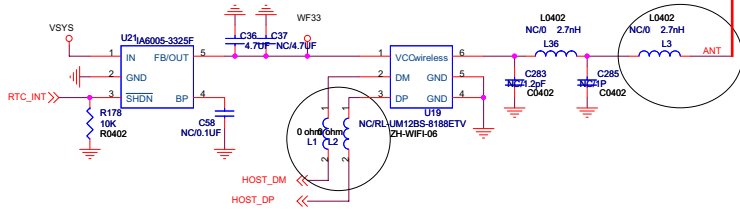


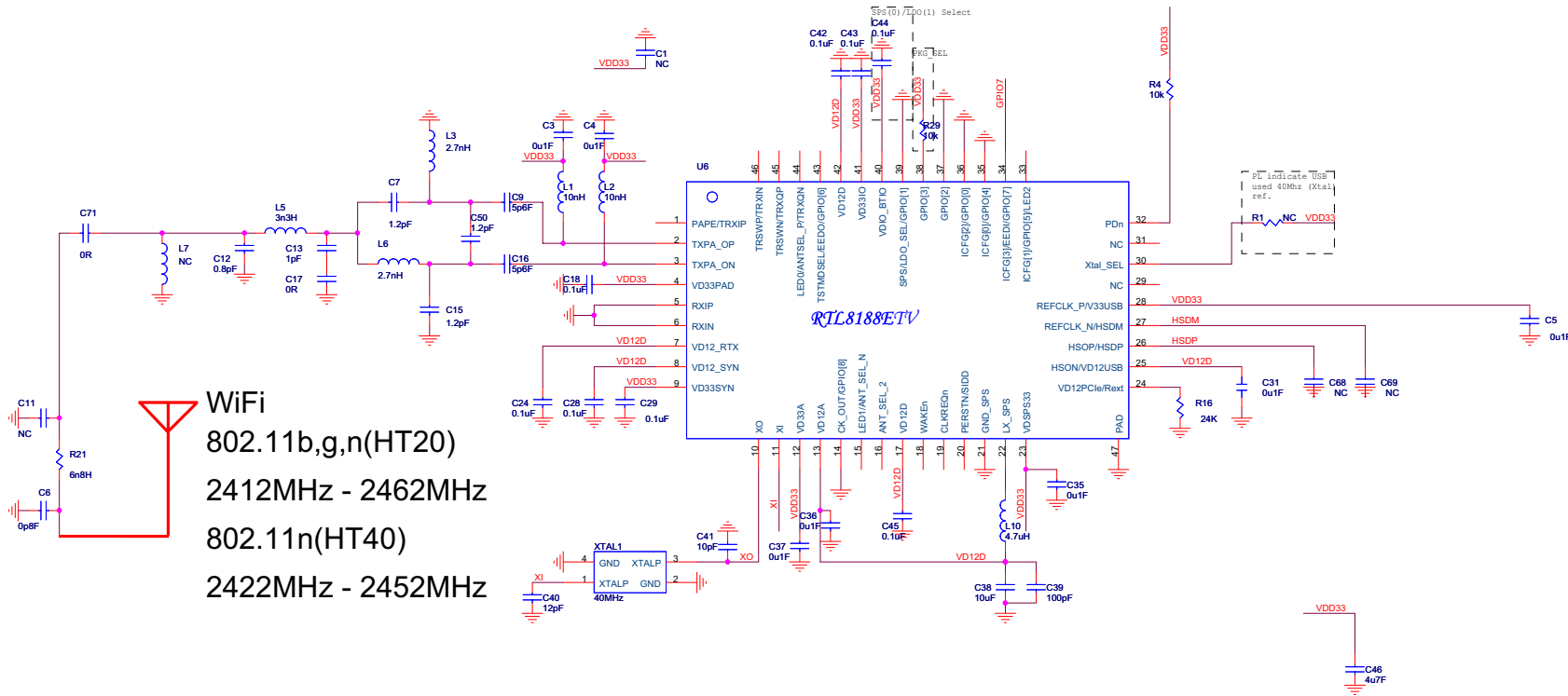




# USB WIFI

WiFi 802.11 b/g/n(HT20)  
2412MHz to 2462MHz  
802.11 n (HT40)  
2422MHz to 2452MHz





WiFi  
 802.11b,g,n(HT20)  
 2412MHz - 2462MHz  
 802.11n(HT40)  
 2422MHz - 2452MHz

UM12BS Schematic

Title		UM12BS	
Size	Document Number	Rev	
CustomerDoc		1V0	
Date:	Thursday, April 05, 2012	Sheet	1 of 1