



Certificate of Compliance
for the FCC Declaration of Conformity Procedure from the
Conformity Assessment Body
Hong Kong Standards and Testing Centre
Designation Number: HK0001

on the basis of Asia-Pacific Economic Cooperation (APEC) economies' Mutual Recognition Arrangement for Conformity Assessment of Telecommunications Equipment (APEC Tel MRA) scheme sanctioned by the Federal Communications Commission of the United States Government.

Certificate Number: FCC002681
Test Laboratory: The Hong Kong Standards and Testing Centre Ltd.
Test Report / Issued date: MH192437 / 10 March 2016
Applicant: Alco Electronics Ltd.
Manufacturer: Alco Electronics (Dongguan) Limited
Type of Equipment: Tablet
Brand Name: Venturer
Model Number: CT9603W47
Additional Brand Name(s): See Appendix A
Additional Model Number(s): See Appendix A

Rules and Regulations

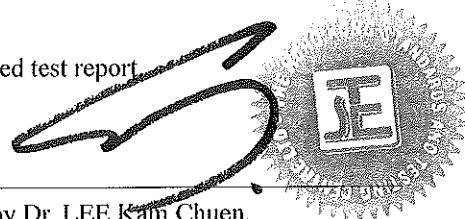
United States CFR 47 FCC Part 15 Subpart B (Unintentional Radiators).

Standards

ANSI C63.4-2009, American National Standard for Methods of Measurement of Radio-Noise Emissions from Low-Voltage Electrical and Electronic Equipment in the Range of 9kHz to 40 GHz.

Remark

This certificate shall be used in conjunction with the above mentioned test report



Signed by Dr. LEE Kam Chuen,

ElectroMagnetic Compatibility Department

For and on behalf of

Date: 2016-03-10

The Hong Kong Standards and Testing Centre Ltd.

(Conformity Assessment Body CAB under the APEC Tel MRA)



Certificate of Compliance
for the FCC Declaration of Conformity Procedure from the
Conformity Assessment Body
Hong Kong Standards and Testing Centre
Designation Number: HK0001

on the basis of Asia-Pacific Economic Cooperation (APEC) economies' Mutual Recognition Arrangement for Conformity Assessment of Telecommunications Equipment (APEC Tel MRA) scheme sanctioned by the Federal Communications Commission of the United States Government.

Certificate Number: FCC002681
Test Laboratory: The Hong Kong Standards and Testing Centre Ltd.
Test Report / Issued date: MH192437 / 10 March 2016

Appendix A

Additional Brand Name(s): RCA
Additional Model Number(s): RCT6603W47, CT9503W87M, CT9503W87MDK,
RCT6303W87M, RCT6303W87MDK



STC Test Report

Date: 2016-03-10

Page 1 of 20

No.: MH192437

Applicant: Alco Electronics Ltd.
11/F Zung Fu Industrial Building, 1067 King's Road, Quarry Bay, Hong Kong

Manufacturer: Alco Electronics (Dongguan) Limited
Gong Ye Xi Road, Houjie Technology Industrial Park, Houjie, Dongguan, Guangdong, P.R.C. Postal Code: 523960

Description of Sample(s): Submitted sample(s) said to be
Product: Tablet
Brand Name: Venturer
Model Number: CT9603W47

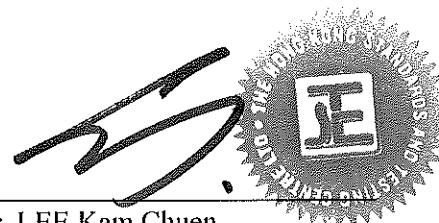
Date Sample(s) Received: 2016-02-22

Date Tested: 2016-02-22 to 2016-02-24

Investigation Requested: FCC Part 15 Subpart B

Conclusion(s): The submitted product COMPLIED with the requirements of Federal Communications Commission [FCC] Rules and Regulations Part 15. The tests were performed in accordance with the standards described above and on Section 2.2 in this Test Report.

Remark(s): The EUT highest operating frequency provided by manufacturer is 1.3 GHz. (Except RF Part).
For additional model number(s) and additional brand name(s) details, see page 3.



Dr. LEE Kam Chuen
Authorized Signatory

ElectroMagnetic Compatibility Department
For and on behalf of

The Hong Kong Standards and Testing Centre Ltd.

The Hong Kong Standards and Testing Centre Limited

10 Dai Wang Street, Tai Po Industrial Estate, Tai Po, N.T., Hong Kong

Tel: +852 2666 1888 Fax: +852 2664 4353 Email: hkstc@hkstc.org Website: www.stc-group.org

This report shall not be reproduced unless with prior written approval from The Hong Kong Standards and Testing Centre Limited.

For Conditions of Issuance of this test report, please refer to the overleaf and Website.



STC Test Report

Date: 2016-03-10

Page 2 of 20

No.: MH192437

CONTENT:

| | |
|--------------------------|---|
| Cover | Page 1 of 20 |
| Content | Page 2 of 20 |
| | |
| <u>1.0</u> | <u>General Details</u> |
| 1.1 | Equipment Under Test [EUT] Description of sample(s) Page 3 of 20 |
| 1.2 | Description of EUT operation Page 3 of 20 |
| 1.3 | Date of Order Page 4 of 20 |
| 1.4 | Submitted Sample(s) Page 4 of 20 |
| 1.5 | Test Duration Page 4 of 20 |
| 1.6 | Country of Origin Page 4 of 20 |
| | |
| <u>2.0</u> | <u>Technical Details</u> |
| 2.1 | Investigations Requested Page 5 of 20 |
| 2.2 | Test Standards and Results Summary Page 5 of 20 |
| | |
| <u>3.0</u> | <u>Test Results</u> |
| 3.1 | Emission Page 6 - 13 of 20 |
| | |
| <u>Appendix A</u> | |
| | List of Measurement Equipment Page 14 of 20 |
| | |
| <u>Appendix B</u> | |
| | Ancillary Equipment Page 15 of 20 |
| | |
| <u>Appendix C</u> | |
| | Photographs Page 16 - 20 of 20 |

The Hong Kong Standards and Testing Centre Limited

10 Dai Wang Street, Tai Po Industrial Estate, Tai Po, N.T., Hong Kong

Tel: +852 2666 1888 Fax: +852 2664 4353 Email: hkstc@hkstc.org Website: www.stc-group.org

This report shall not be reproduced unless with prior written approval from The Hong Kong Standards and Testing Centre Limited.

For Conditions of Issuance of this test report, please refer to the overleaf and Website.



STC Test Report

Date: 2016-03-10

Page 3 of 20

No.: MH192437

1.0 General Details

1.1 Equipment Under Test [EUT] Description of Sample(s)

Submitted sample(s) said to be

Product: Tablet
Manufacturer: Alco Electronics (Dongguan) Limited
Brand Name: Venturer
Additional Brand Name(s): RCA
Model Number: CT9603W47
Additional Model Number(s): RCT6603W47, CT9503W87M, CT9503W87MDK,
RCT6303W87M, RCT6303W87MDK
Rating: 5Vd.c. with Jack or 3.7Vd.c. Li-polymer rechargeable battery
The AC/DC adaptor was provided by the applicant with following details:
Brand name: DCK ; Model No.: LPL-B008050150ZW ; Input: 100-240Va.c. 50/60Hz 250mA
Max ; Output: 5Vd.c. 1500mA.
Brand name: ACT ; Model No.: APS-N009050150W-G ; Input: 100-240Va.c. 50/60Hz 0.35A
Max ; Output: 5Vd.c. 1.5A.

1.2 Description of EUT Operation

The Equipment Under Test (EUT) is a Tablet PC of Alco Electronics (Dongguan) Limited. Tests were conducted under the Video play mode(Internal memory), Video play mode (TF card), Video play mode(USB flash drive), Video play mode(Connected to HDMI TV, Internal memory), Video play mode(Connected to HDMI TV, TF card), Video play mode (Connected to HDMI TV, USB flash drive), Front video record mode(Internal memory), Front video record mode(TF card), Front video record mode(USB flash drive), Rear video record mode(Internal memory), Rear video record mode(TF card), Rear video record mode (USB flash drive), Download mode(USB type A port connected to PC, Internal memory and TF card) in order to simulate the normal operating condition.

Both AC/DC adaptor and battery operated condition were tested, Download mode(USB type A port connected to PC, Internal memory and TF card, PC mains, adaptor model number: APS-N009050150W-G) is the worst case test mode in Conducted Emission test;
Download mode(USB type A port connected to PC, Internal memory and TF card, adaptor operated, adaptor model number: LPL-B008050150ZW) is the worst case test mode in Radiated Emission (30MHz-1GHz) test;
and Video play mode(Connected to HDMI TV, TF card, adaptor operated, adaptor model number: LPL-B008050150ZW) is the worst case test mode in Radiated Emission (1-9GHz) test. Test results are recorded in this test report.

The Hong Kong Standards and Testing Centre Limited

10 Dai Wang Street, Tai Po Industrial Estate, Tai Po, N.T., Hong Kong

Tel: +852 2666 1888 Fax: +852 2664 4353 Email: hkstc@hkstc.org Website: www.stc-group.org

This report shall not be reproduced unless with prior written approval from The Hong Kong Standards and Testing Centre Limited.

For Conditions of Issuance of this test report, please refer to the overleaf and Website.



STC Test Report

Date: 2016-03-10

Page 4 of 20

No.: MH192437

1.3 Date of Order

2016-02-29

1.4 Submitted Sample(s):

1 Sample

1.5 Test Duration

2016-02-22 to 2016-02-24

1.6 Country of Origin

China

The Hong Kong Standards and Testing Centre Limited

10 Dai Wang Street, Tai Po Industrial Estate, Tai Po, N.T., Hong Kong

Tel: +852 2666 1888 Fax: +852 2664 4353 Email: hkstc@hkstc.org Website: www.stc-group.org

This report shall not be reproduced unless with prior written approval from The Hong Kong Standards and Testing Centre Limited.

For Conditions of Issuance of this test report, please refer to the overleaf and Website.



STC Test Report

Date: 2016-03-10

Page 5 of 20

No.: MH192437

2.0 Technical Details

2.1 Investigations Requested

Perform ElectroMagnetic Interference measurement in accordance with FCC 47CFR [Codes of Federal Regulations] Part 15: 2014 and ANSI C63.4: 2014 for FCC DoC.

2.2 Test Standards and Results Summary Tables

| EMISSION Results Summary | | | | | |
|--|------------------|-----------------|---------------------|-------------------------------------|--------------------------|
| Test Condition | Test Requirement | Test Method | Class / Severity | Test Result | |
| | | | | Pass | Failed |
| Radiated Emissions | FCC 47CFR 15.109 | ANSI C63.4:2014 | Class B | <input checked="" type="checkbox"/> | <input type="checkbox"/> |
| Conducted Emissions on AC, 0.15MHz to 30MHz | FCC 47CFR 15.107 | ANSI C63.4:2014 | Class B | <input checked="" type="checkbox"/> | <input type="checkbox"/> |

The Hong Kong Standards and Testing Centre Limited

10 Dai Wang Street, Tai Po Industrial Estate, Tai Po, N.T., Hong Kong

Tel: +852 2666 1888 Fax: +852 2664 4353 Email: hkstc@hkstc.org Website: www.stc-group.org

This report shall not be reproduced unless with prior written approval from The Hong Kong Standards and Testing Centre Limited.

For Conditions of Issuance of this test report, please refer to the overleaf and Website.



STC Test Report

Date: 2016-03-10

Page 6 of 20

No.: MH192437

3.0 Test Results

3.1 Emission

3.1.1 Radiated Emissions

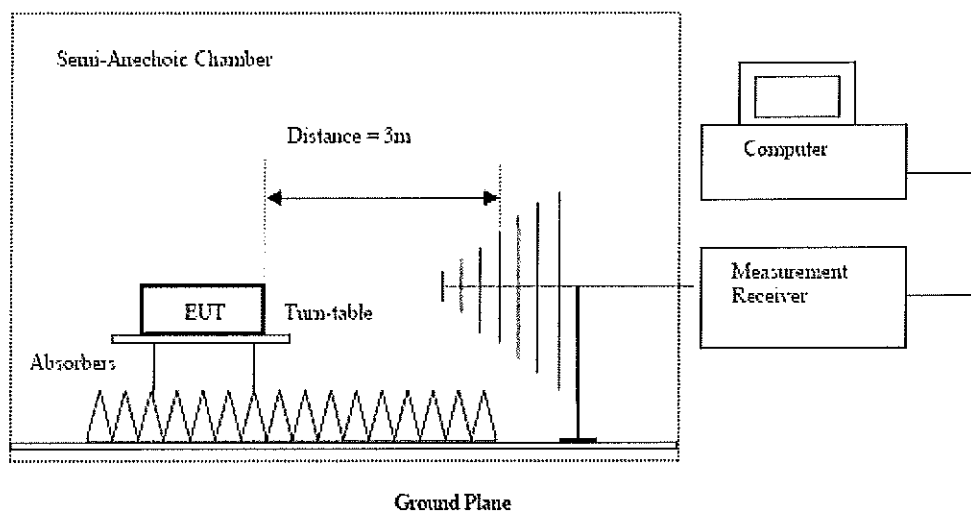
Test Requirement: FCC 47CFR 15.109
Test Method: ANSI C63.4: 2009
Test Date: 2016-02-22 to 2016-02-23
Mode of Operation: Download mode(USB type A port connected to PC, Internal memory and TF card, adaptor operated) / Video play mode(Connected to HDMI TV, TF card, adaptor operated)
(Refer to 1.2 description of EUT operation for details)

Test Method:

The sample was placed 0.8m above the ground plane of Semi-Anechoic chamber*. Measurements in both horizontal and vertical polarities were performed. During the test, each emission was maximized by: having the EUT continuously working, investigated all operating modes, rotated about all 3 axis (X, Y & Z) and considered typical configuration to obtain worst position, manipulating interconnecting cables, rotating turntable, varying antenna height from 1m to 4m in both horizontal and vertical polarizations. The emissions worst-case are shown in Test Results of the following pages.

*: Semi Anechoic chamber located on the G/F of The Hong Kong Standards and Testing Centre Ltd. with a metal ground plane filed with the FCC pursuant to section 2.948 of the FCC rules, with Registration Number: 607756.

Test Setup:



Absorbers placed on top of the ground plane are for measurements above 1000MHz only.
Measurements between 30MHz to 1000MHz made with Bi-log antennas, above 1000MHz horn antennas are used.
The Hong Kong Standards and Testing Centre Limited

10 Dai Wang Street, Tai Po Industrial Estate, Tai Po, N.T., Hong Kong

Tel: +852 2666 1888 Fax: +852 2664 4353 Email: hkstc@hkstc.org Website: www.stc-group.org

This report shall not be reproduced unless with prior written approval from The Hong Kong Standards and Testing Centre Limited.

For Conditions of Issuance of this test report, please refer to the overleaf and Website.



STC Test Report

Date: 2016-03-10

Page 7 of 20

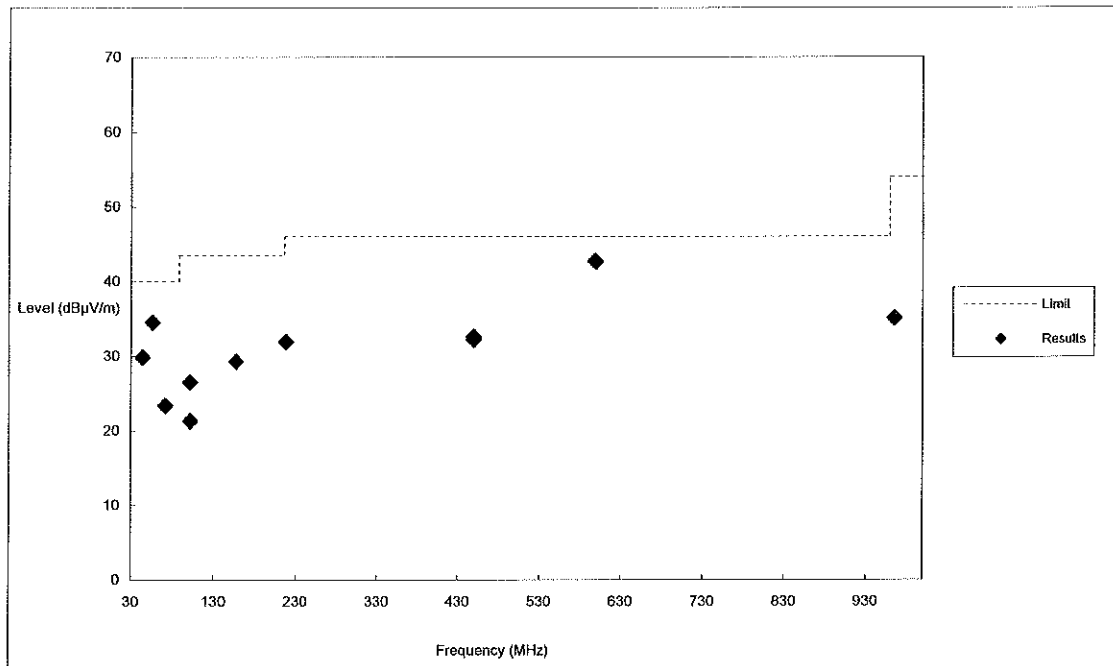
No.: MH192437

Limits for Radiated Emissions [FCC 47 CFR 15.109 Class B]:

| Frequency Range [MHz] | Quasi-Peak Limits [$\mu\text{V/m}$] |
|-----------------------|---------------------------------------|
| 30-88 | 100 |
| 88-216 | 150 |
| 216-960 | 200 |
| Above960 | 500 |

The emission limits shown in the above table are based on measurement employing a CISPR quasi-peak detector and above 1000MHz are based on measurements employing an average detector.

Results of Download mode(USB type A port connected to PC, Internal memory and TF card, adaptor operated, adaptor model number: LPL-B008050150ZW) : PASS



The Hong Kong Standards and Testing Centre Limited

10 Dai Wang Street, Tai Po Industrial Estate, Tai Po, N.T., Hong Kong

Tel: +852 2666 1888 Fax: +852 2664 4353 Email: hkstc@hkstc.org Website: www.stc-group.org

This report shall not be reproduced unless with prior written approval from The Hong Kong Standards and Testing Centre Limited.

For Conditions of Issuance of this test report, please refer to the overleaf and Website.



STC Test Report

Date: 2016-03-10

Page 8 of 20

No.: MH192437

Results of Download mode(USB type A port connected to PC, Internal memory and TF card, adaptor operated, adaptor model number: LPL-B008050150ZW) : PASS

| Radiated Emissions Quasi-Peak | | | | | |
|----------------------------------|---------------------|------------------------------|------------------------------|---------------------------|---------------------------|
| Emission Frequency MHz | E-Field Polarity | Level @3m dB μ V/m | Limit @3m dB μ V/m | Level @3m μ V/m | Limit @3m μ V/m |
| 56.2 | Horizontal | 34.5 | 40.0 | 53.2 | 100.0 |
| 101.8 | Horizontal | 26.5 | 43.5 | 21.1 | 150.0 |
| 157.3 | Horizontal | 29.3 | 43.5 | 29.1 | 150.0 |
| 218.1 | Horizontal | 31.9 | 46.0 | 39.2 | 200.0 |
| 449.9 | Horizontal | 32.6 | 46.0 | 42.6 | 200.0 |
| 599.3 | Horizontal | 42.6 | 46.0 | 134.9 | 200.0 |
| 43.8 | Vertical | 29.8 | 40.0 | 31.0 | 100.0 |
| 71.7 | Vertical | 23.4 | 40.0 | 14.7 | 100.0 |
| 101.8 | Vertical | 21.3 | 43.5 | 11.6 | 150.0 |
| 449.9 | Vertical | 32.2 | 46.0 | 40.7 | 200.0 |
| 598.0 | Vertical | 42.7 | 46.0 | 136.6 | 200.0 |
| 965.6 | Vertical | 35.1 | 54.0 | 56.9 | 500.0 |

The Hong Kong Standards and Testing Centre Limited

10 Dai Wang Street, Tai Po Industrial Estate, Tai Po, N.T., Hong Kong

Tel: +852 2666 1888 Fax: +852 2664 4353 Email: hkstc@hkstc.org Website: www.stc-group.org

This report shall not be reproduced unless with prior written approval from The Hong Kong Standards and Testing Centre Limited.

For Conditions of Issuance of this test report, please refer to the overleaf and Website.



STC Test Report

Date: 2016-03-10

Page 9 of 20

No.: MH192437

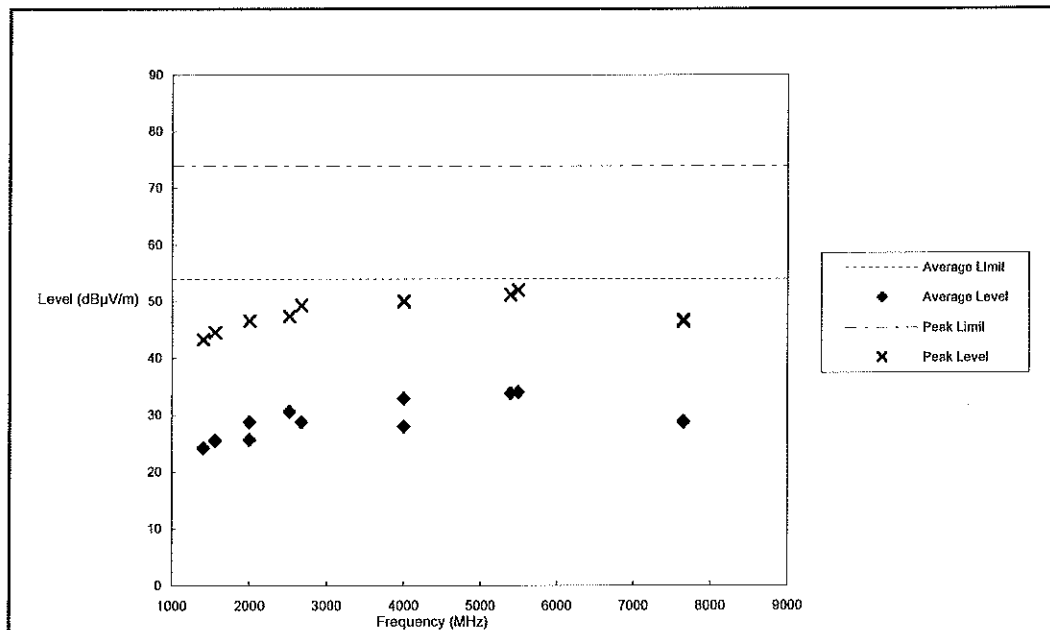
Limits for Radiated Emissions [FCC 47 CFR 15.109 Class B]:

| Frequency Range [MHz] | Quasi-Peak Limits [$\mu\text{V/m}$] |
|-----------------------|---------------------------------------|
| 30-88 | 100 |
| 88-216 | 150 |
| 216-960 | 200 |
| Above960 | 500 |

The emission limits shown in the above table are based on measurement employing a CISPR quasi-peak detector and above 1000MHz are based on measurements employing an average detector.

Results of Video play mode(Connected to HDMI TV, TF card, adaptor operated, adaptor model number: LPL-B008050150ZW) : PASS

Please refer to the following table for individual results.



The Hong Kong Standards and Testing Centre Limited

10 Dai Wang Street, Tai Po Industrial Estate, Tai Po, N.T., Hong Kong

Tel: +852 2666 1888 Fax: +852 2664 4353 Email: hkstc@hkstc.org Website: www.stc-group.org

This report shall not be reproduced unless with prior written approval from The Hong Kong Standards and Testing Centre Limited.

For Conditions of Issuance of this test report, please refer to the overleaf and Website.



STC Test Report

Date: 2016-03-10

Page 10 of 20

No.: MH192437

Results of Video play mode(Connected to HDMI TV, TF card, adaptor operated, adaptor model number: LPL-B008050150ZW) : PASS

The average & peak measurements were recorded as follows:

| Frequency MHz | Peak Level @3m dB μ V/m | Peak Limit @3m dB μ V/m | Peak Margin dB | E-Field Polarity |
|------------------|-----------------------------------|-----------------------------------|----------------------|------------------|
| 1404.9 | 43.3 | 74.0 | 30.7 | Vertical |
| 2000.3 | 46.6 | 74.0 | 27.4 | Vertical |
| 2666.6 | 49.3 | 74.0 | 24.7 | Vertical |
| 3999.5 | 50.1 | 74.0 | 23.9 | Vertical |
| 5396.4 | 51.2 | 74.0 | 22.8 | Vertical |
| 7651.0 | 46.8 | 74.0 | 27.2 | Vertical |
| 1552.9 | 44.6 | 74.0 | 29.4 | Horizontal |
| 1999.8 | 46.6 | 74.0 | 27.4 | Horizontal |
| 2509.6 | 47.4 | 74.0 | 26.6 | Horizontal |
| 4000.3 | 50.0 | 74.0 | 24.0 | Horizontal |
| 5496.9 | 52.0 | 74.0 | 22.0 | Horizontal |
| 7651.0 | 46.5 | 74.0 | 27.5 | Horizontal |

| Frequency MHz | Average Level @3m dB μ V/m | Average Limit @3m dB μ V/m | Average Margin dB | E-Field Polarity |
|------------------|--------------------------------------|--------------------------------------|-------------------------|------------------|
| 1404.9 | 24.2 | 54.0 | 29.8 | Vertical |
| 2000.3 | 25.7 | 54.0 | 28.3 | Vertical |
| 2666.6 | 28.8 | 54.0 | 25.2 | Vertical |
| 3999.5 | 32.9 | 54.0 | 21.1 | Vertical |
| 5396.4 | 33.8 | 54.0 | 20.2 | Vertical |
| 7651.0 | 28.9 | 54.0 | 25.1 | Vertical |
| 1552.9 | 25.5 | 54.0 | 28.5 | Horizontal |
| 1999.8 | 28.8 | 54.0 | 25.2 | Horizontal |
| 2509.6 | 30.6 | 54.0 | 23.4 | Horizontal |
| 4000.3 | 28.0 | 54.0 | 26.0 | Horizontal |
| 5496.9 | 34.0 | 54.0 | 20.0 | Horizontal |
| 7651.0 | 28.7 | 54.0 | 25.3 | Horizontal |

Remarks:

Calculated measurement uncertainty (30MHz – 1GHz): 4.9dB

(1GHz – 6GHz): 4.02dB

(6GHz – 18GHz): 4.03dB

Emissions in the vertical and horizontal polarizations have been investigated and the worst-case test results are recorded in this report.

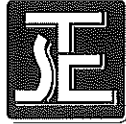
The Hong Kong Standards and Testing Centre Limited

10 Dai Wang Street, Tai Po Industrial Estate, Tai Po, N.T., Hong Kong

Tel: +852 2666 1888 Fax: +852 2664 4353 Email: hkstc@hkstc.org Website: www.stc-group.org

This report shall not be reproduced unless with prior written approval from The Hong Kong Standards and Testing Centre Limited.

For Conditions of Issuance of this test report, please refer to the overleaf and Website.



STC Test Report

Date: 2016-03-10

Page 11 of 20

No.: MH192437

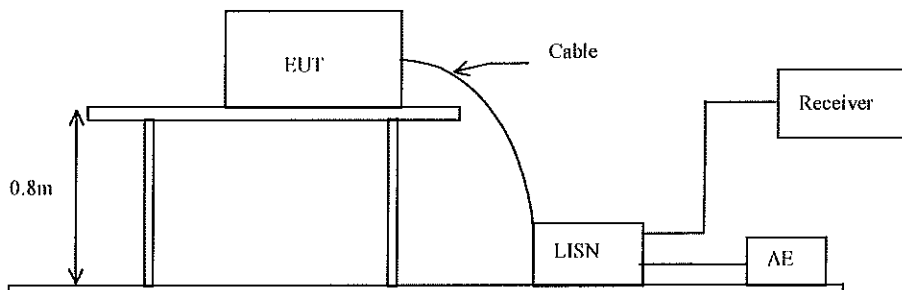
3.1.2 Conducted Emissions (0.15MHz to 30MHz)

Test Requirement: FCC 47CFR 15.107
Test Method: ANSI C63.4:2014
Test Date: 2016-02-24
Mode of Operation: Download mode(USB type A port connected to PC, Internal memory and TF card, PC mains)
(Refer to 1.2 description of EUT operation for details)

Test Method:

The test was performed in accordance with ANSI C63.4: 2014, with the following: an initial measurement was performed in peak and average detection mode on the live line, any emissions recorded within 30dB of the relevant limit line were re-measured using quasi-peak and average detection on the live and neutral lines with the worst case recorded in the table of results.

Test Setup:



The Hong Kong Standards and Testing Centre Limited

10 Dai Wang Street, Tai Po Industrial Estate, Tai Po, N.T., Hong Kong

Tel: +852 2666 1888 Fax: +852 2664 4353 Email: hkstc@hkstc.org Website: www.stc-group.org

This report shall not be reproduced unless with prior written approval from The Hong Kong Standards and Testing Centre Limited.

For Conditions of Issuance of this test report, please refer to the overleaf and Website.



STC Test Report

Date: 2016-03-10

Page 12 of 20

No.: MH192437

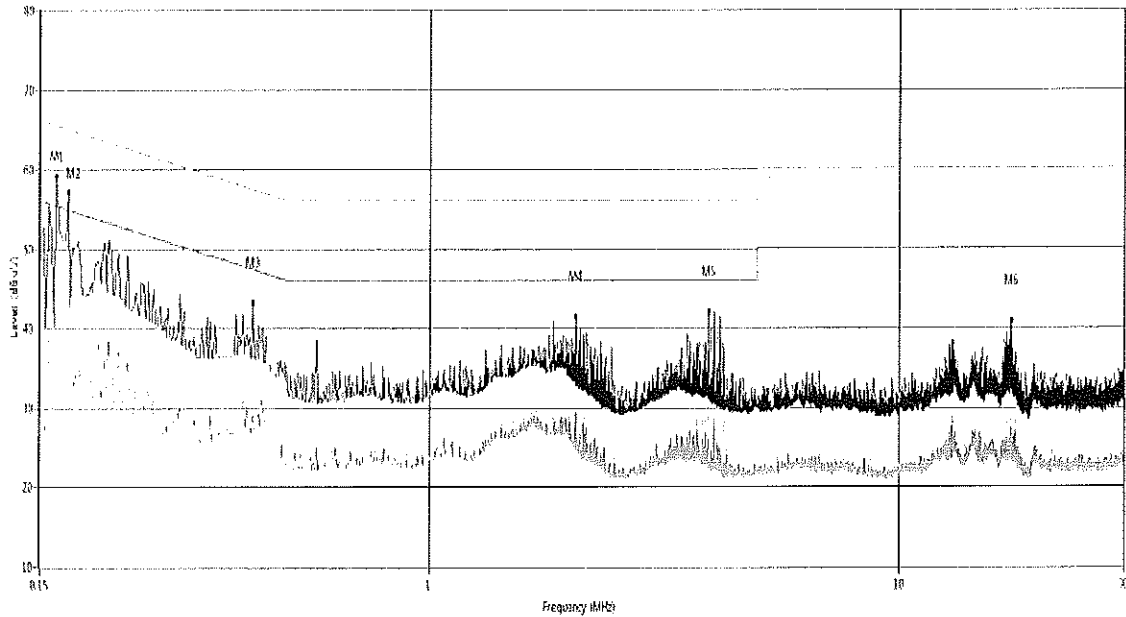
Limit for Conducted Emissions (FCC 47 CFR 15.107):

| Frequency Range [MHz] | Quasi-Peak Limits [dB μ V] | Average [dB μ V] |
|--------------------------|-----------------------------------|-------------------------|
| 0.15-0.5 | 66 to 56* | 56 to 46* |
| 0.5-5.0 | 56 | 46 |
| 5.0-30.0 | 60 | 50 |

* Decreases with the logarithm of the frequency.

Limits for Conducted Emissions Test, please refer to limit lines (Quasi-Peak and Average) in the following diagram.

**Results of Download mode(USB type A port connected to PC, Internal memory and TF card,
PC mains, adaptor model number: APS-N009050150W-G) (L) : PASS**



| Conductor Live or Neutral | Frequency MHz | Quasi-peak | | Average | |
|------------------------------|------------------|---------------------|---------------------|---------------------|---------------------|
| | | Level dB μ V | Limit dB μ V | Level dB μ V | Limit dB μ V |
| Live | 0.160 | 59.1 | 65.7 | 47.4 | 55.7 |
| Live | 0.170 | 57.1 | 65.4 | 45.1 | 55.4 |
| Live | 0.420 | 43.3 | 58.2 | 29.6 | 48.2 |
| Live | 2.050 | 41.4 | 56.0 | 29.7 | 46.0 |
| Live | 3.950 | 42.0 | 56.0 | 31.0 | 46.0 |
| Live | 17.380 | 40.8 | 60.0 | 28.4 | 50.0 |

The Hong Kong Standards and Testing Centre Limited

10 Dai Wang Street, Tai Po Industrial Estate, Tai Po, N.T., Hong Kong

Tel: +852 2666 1888 Fax: +852 2664 4353 Email: hkstc@hkstc.org Website: www.stc-group.org

This report shall not be reproduced unless with prior written approval from The Hong Kong Standards and Testing Centre Limited.

For Conditions of Issuance of this test report, please refer to the overleaf and Website.



STC Test Report

Date: 2016-03-10

Page 13 of 20

No.: MH192437

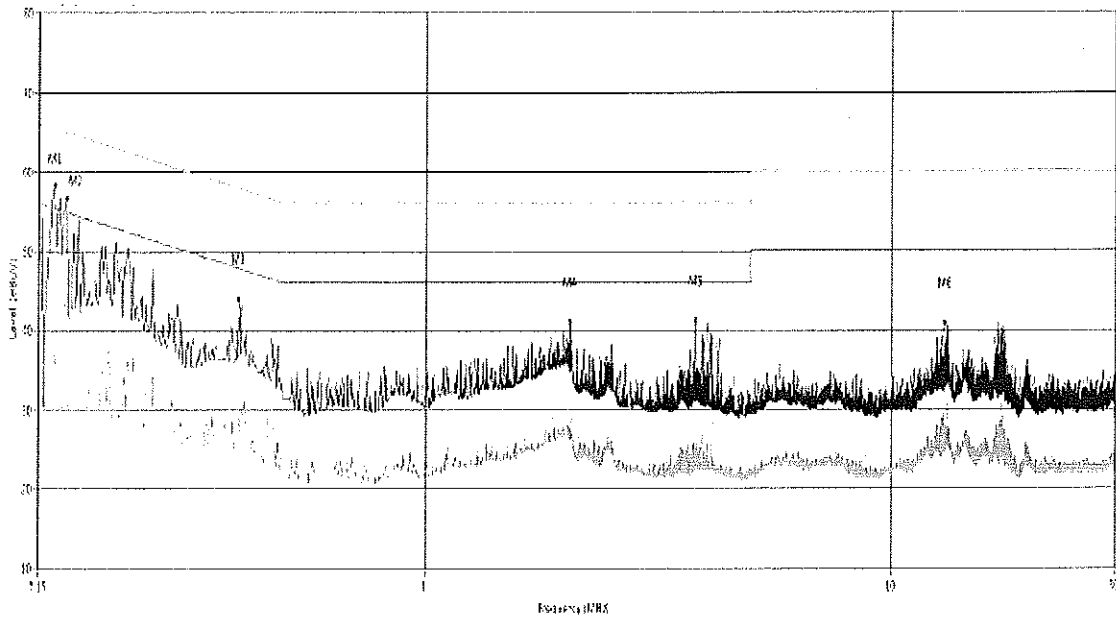
Limit for Conducted Emissions (FCC 47 CFR 15.107):

| Frequency Range [MHz] | Quasi-Peak Limits [dB μ V] | Average [dB μ V] |
|--------------------------|-----------------------------------|-------------------------|
| 0.15-0.5 | 66 to 56* | 56 to 46* |
| 0.5-5.0 | 56 | 46 |
| 5.0-30.0 | 60 | 50 |

* Decreases with the logarithm of the frequency.

Limits for Conducted Emissions Test, please refer to limit lines (Quasi-Peak and Average) in the following diagram.

Results of Download mode(USB type A port connected to PC, Internal memory and TF card, PC mains, adaptor model number: APS-N009050150W-G) (N) : PASS



| Conductor Live or Neutral | Frequency MHz | Quasi-peak | | Average | |
|------------------------------|------------------|---------------------|---------------------|---------------------|---------------------|
| | | Level dB μ V | Limit dB μ V | Level dB μ V | Limit dB μ V |
| Neutral | 0.160 | 58.2 | 65.7 | 34.9 | 55.7 |
| Neutral | 0.170 | 56.7 | 65.4 | 43.1 | 55.4 |
| Neutral | 0.400 | 43.9 | 58.9 | 29.4 | 48.9 |
| Neutral | 2.050 | 41.0 | 56.0 | 28.8 | 46.0 |
| Neutral | 3.820 | 41.2 | 56.0 | 27.2 | 46.0 |
| Neutral | 13.030 | 40.9 | 60.0 | 26.6 | 50.0 |

Remark:

Calculated measurement uncertainty (0.15MHz – 30MHz): 3.25dB

The Hong Kong Standards and Testing Centre Limited

10 Dai Wang Street, Tai Po Industrial Estate, Tai Po, N.T., Hong Kong

Tel: +852 2666 1888 Fax: +852 2664 4353 Email: hkstc@hkstc.org Website: www.stc-group.org

This report shall not be reproduced unless with prior written approval from The Hong Kong Standards and Testing Centre Limited.

For Conditions of Issuance of this test report, please refer to the overleaf and Website.



STC Test Report

Date: 2016-03-10

Page 14 of 20

No.: MH192437

Appendix A

List of Measurement Equipment

Radiated Emission

| EQP NO. | DESCRIPTION | MANUFACTURER | MODEL NO. | SERIAL NO. | LAST CAL. | DUE CAL. |
|---------|--------------------------------------|--------------|-----------|------------|------------|------------|
| EMD062 | DOUBLE-RIDGED WAVEGUIDE HORN ANTENNA | ETS-LINDGREN | 3117 | 00114120 | 2014/11/15 | 2016/11/15 |
| EM215 | MULTIDEVICE CONTROLLER | EMCO | 2090 | 00024676 | N/A | N/A |
| EM216 | MINI MAST SYSTEM | EMCO | 2075 | 00026842 | N/A | N/A |
| EM217 | ELECTRIC POWERED TURNTABLE | EMCO | 2088 | 00029144 | N/A | N/A |
| EM218 | ANECHOIC CHAMBER | ETS-LINDGREN | FACT-3 | -- | 2015/04/20 | 2016/04/20 |
| EM320 | BICONILOG ANTENNA | ETS-LINDGREN | 3142D | 00094856 | 2014/08/06 | 2016/08/06 |
| EM229 | EMI TEST RECEIVER | R&S | ESIB40 | 100248 | 2015/06/01 | 2016/06/01 |

Line Conducted

| EQP NO. | DESCRIPTION | MANUFACTURER | MODEL NO. | SERIAL NO. | LAST CAL. | DUE CAL. |
|---------|-------------------|-------------------------------|-----------|-----------------|------------|------------|
| EM119 | LISN | R & S | ESH3-Z5 | 0831.5518.52 | 2015/10/22 | 2016/10/22 |
| EM145 | EMI TEST RECEIVER | R & S | ESCS 30 | 830245/021 | 2015/06/01 | 2016/06/01 |
| EM179 | IMPULSE LIMITER | ROHDE & SCHWARZ | ES113-Z2 | 357-8810.52/54 | 2016/01/12 | 2017/01/12 |
| EM154 | SHIELDING ROOM | SIEMENS MATSUSHITA COMPONENTS | N/A | 803-740-057-99A | 2012/02/03 | 2017/02/03 |

Remarks:-

CM Corrective Maintenance
N/A Not Applicable or Not Available
TBD To Be Determined

The Hong Kong Standards and Testing Centre Limited

10 Dai Wang Street, Tai Po Industrial Estate, Tai Po, N.T., Hong Kong

Tel: +852 2666 1888 Fax: +852 2664 4353 Email: hkstc@hkstc.org Website: www.stc-group.org

This report shall not be reproduced unless with prior written approval from The Hong Kong Standards and Testing Centre Limited.

For Conditions of Issuance of this test report, please refer to the overleaf and Website.



STC Test Report

Date: 2016-03-10

Page 15 of 20

No.: MH192437

Appendix B

Ancillary Equipment

| ITEM NO. | DESCRIPTION | MODEL NO. | FCC ID | REMARK |
|----------|-----------------|-----------------------|--------|--|
| 1 | DELL COMPUTER | DMC | N/A | CONNECTED TO THE EUT USB TYPE A PORT |
| 2 | DELL MONITOR | E177FPB | N/A | RESOLUTION:1024x768(DURING TESTING) 1.0M UNSHIEDED POWER CORD CONNECTED TO THE COMPUTER 1.5M SHIEDED CABLE CONNECTED TO THE COMPUTER |
| 3 | DELL MOUSE | N/A | N/A | 2.4M UNSHIEDED CABLE CONNECTED TO THE COMPUTER |
| 4 | DELL KEYBOARD | SK-8110 | N/A | 1.8M SHIEDED COILED CABLE CONNECTED TO THE COMPUTER |
| 5 | LASER PRINTER | HP LASERJET 1020 PLUS | N/A | 1.8M UNSHIEDED POWER CORD 2.8M SHIEDED CABLE (BUNDLED TO 1M) CONNECTED TO THE COMPUTER |
| 6 | TF CARD | N/A | N/A | 8G, SANDISK |
| 7 | HEADPHONE | 923050 | N/A | 2.0M UNSHIEDED CABLE CONNECTED TO THE EUT |
| 8 | TV | KDL-32R430B | N/A | SONY |
| 9 | USB FLASH DRIVE | DTSE9 | N/A | 8G, KINGSTON |

The Hong Kong Standards and Testing Centre Limited

10 Dai Wang Street, Tai Po Industrial Estate, Tai Po, N.T., Hong Kong

Tel: +852 2666 1888 Fax: +852 2664 4353 Email: hkstc@hkstc.org Website: www.stc-group.org

This report shall not be reproduced unless with prior written approval from The Hong Kong Standards and Testing Centre Limited.

For Conditions of Issuance of this test report, please refer to the overleaf and Website.



STC Test Report

Date: 2016-03-10

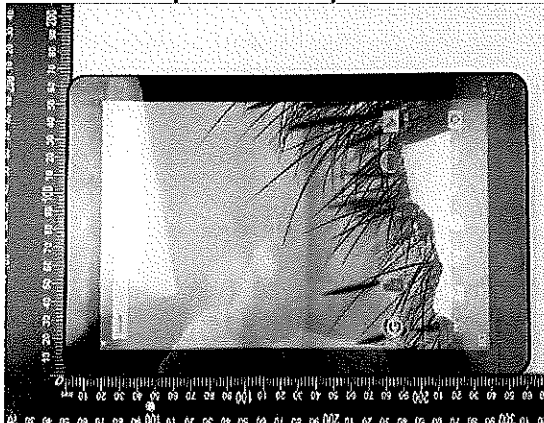
Page 16 of 20

No.: MH192437

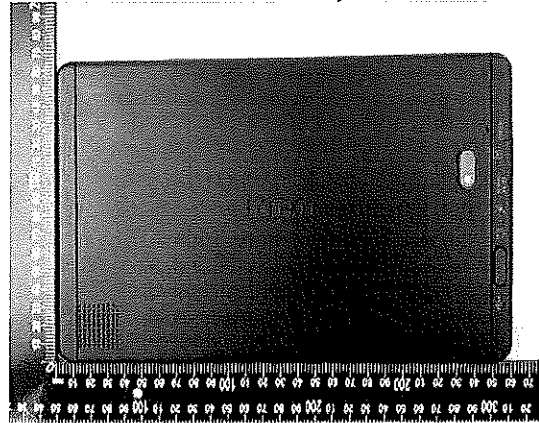
Appendix C

Photographs of EUT

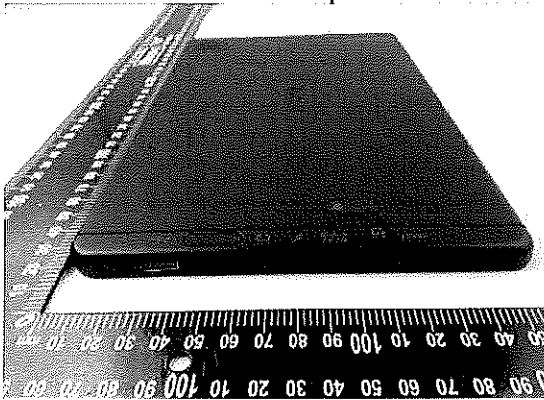
Top View of the product



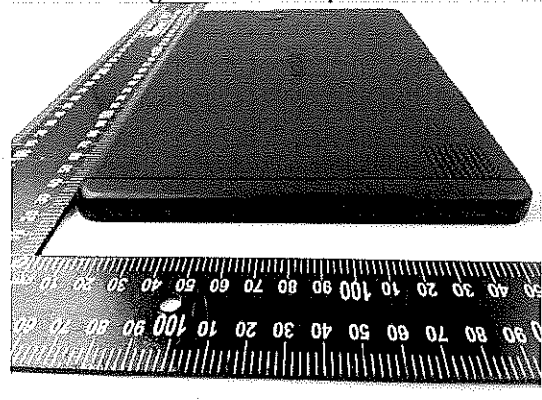
Bottom View of the product



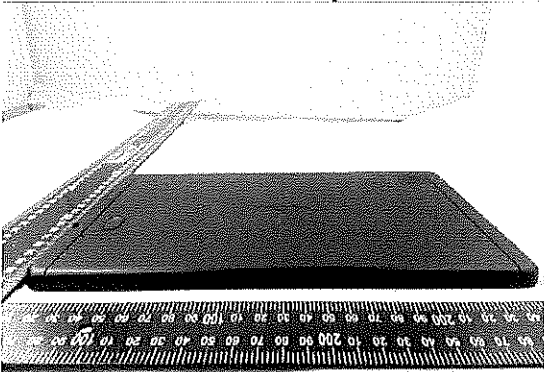
Left View of the product



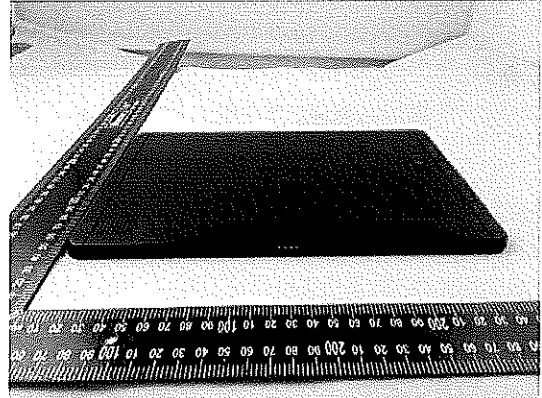
Right View of the product



Rear View of the product



Front View of the product



The Hong Kong Standards and Testing Centre Limited

10 Dai Wang Street, Tai Po Industrial Estate, Tai Po, N.T., Hong Kong

Tel: +852 2666 1888 Fax: +852 2664 4353 Email: hkstc@hkstc.org Website: www.stc-group.org

This report shall not be reproduced unless with prior written approval from The Hong Kong Standards and Testing Centre Limited.

For Conditions of Issuance of this test report, please refer to the overleaf and Website.



STC Test Report

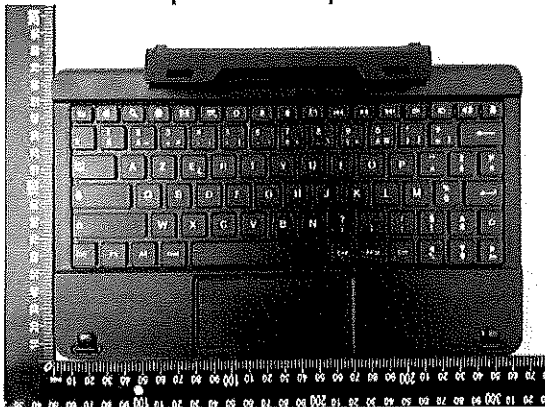
Date: 2016-03-10

Page 17 of 20

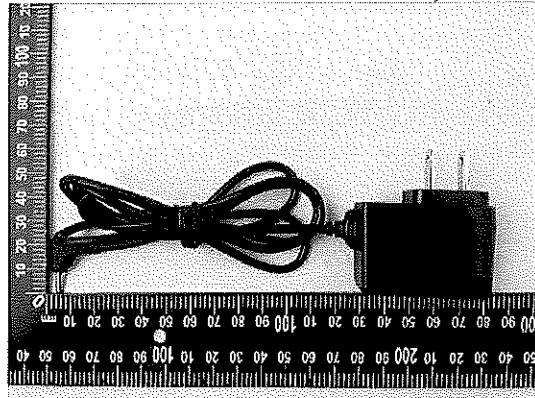
No.: MH192437

Photographs of EUT

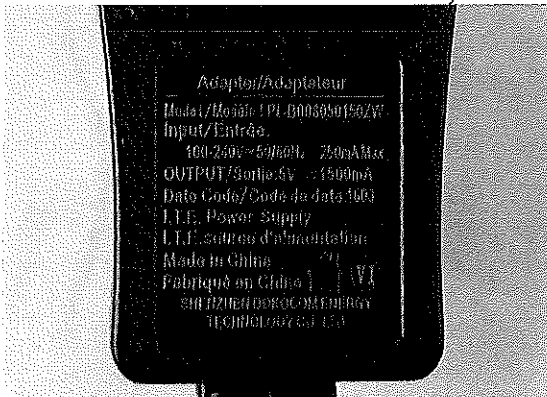
Top View of the product



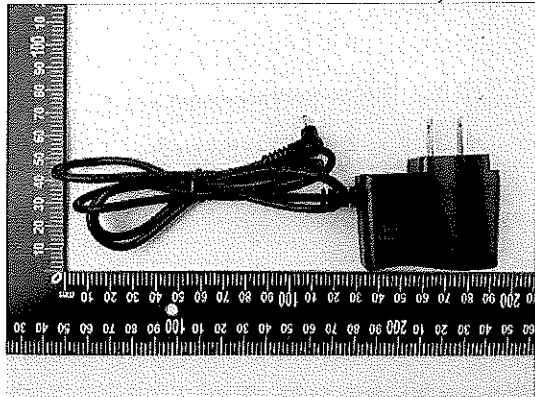
Adaptor View of the product (Adaptor model number: LPL-B008050150ZW)



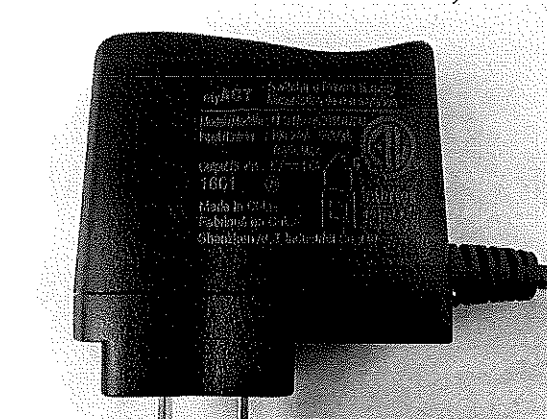
Adaptor View of the product (Adaptor model number: LPL-B008050150ZW)



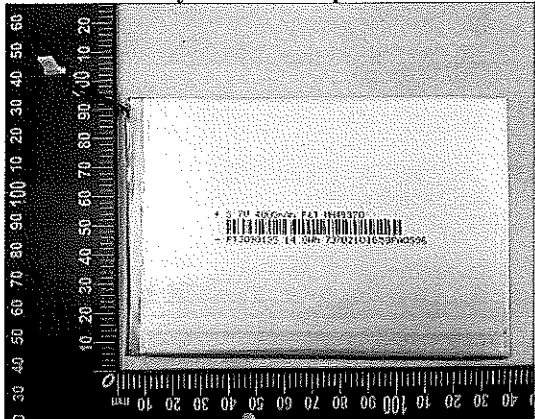
Adaptor View of the product (Adaptor model number: APS-N009050150W-G)



Adaptor View of the product (Adaptor model number: APS-N009050150W-G)



Battery View of the product



The Hong Kong Standards and Testing Centre Limited

10 Dai Wang Street, Tai Po Industrial Estate, Tai Po, N.T., Hong Kong

Tel: +852 2666 1888 Fax: +852 2664 4353 Email: hkstc@hkstc.org Website: www.stc-group.org

This report shall not be reproduced unless with prior written approval from The Hong Kong Standards and Testing Centre Limited.

For Conditions of Issuance of this test report, please refer to the overleaf and Website.



STC Test Report

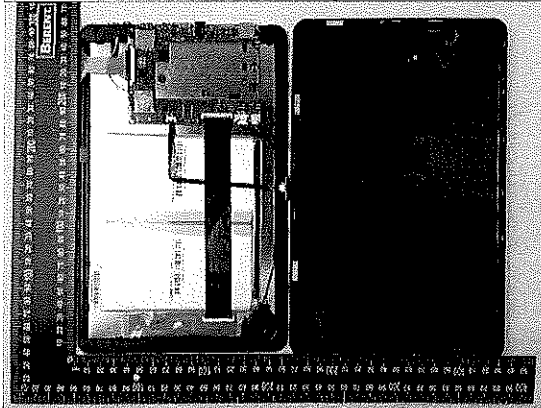
Date: 2016-03-10

Page 18 of 20

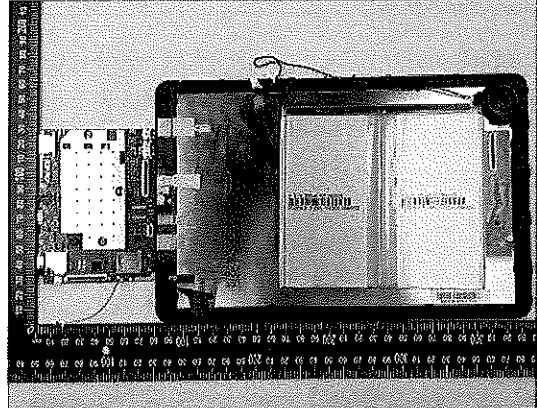
No.: MH192437

Photographs of EUT

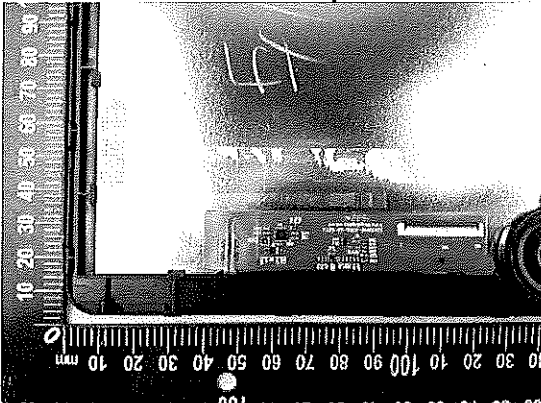
Inner Circuit Top View



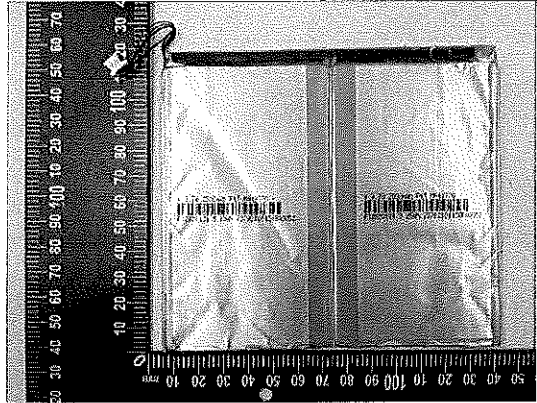
Inner Circuit Top View



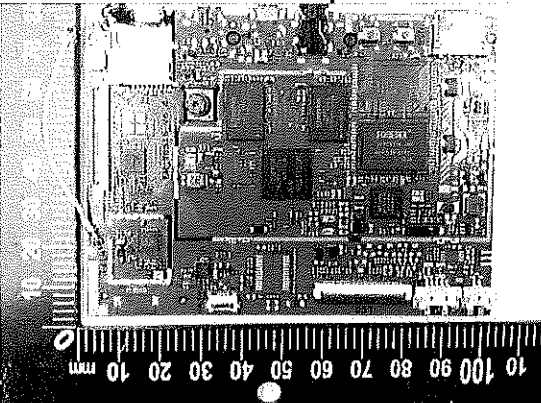
Inner Circuit Top View



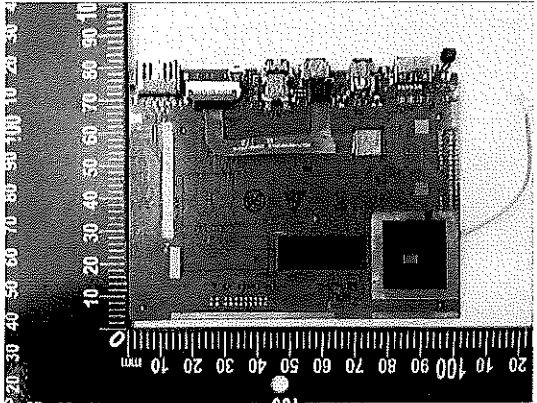
Inner Circuit Top View



Inner Circuit Top View



Inner Circuit Bottom View



The Hong Kong Standards and Testing Centre Limited
10 Dai Wang Street, Tai Po Industrial Estate, Tai Po, N.T., Hong Kong

Tel: +852 2666 1888 Fax: +852 2664 4353 Email: hkstc@hkstc.org Website: www.stc-group.org

This report shall not be reproduced unless with prior written approval from The Hong Kong Standards and Testing Centre Limited.

For Conditions of Issuance of this test report, please refer to the overleaf and Website.



STC Test Report

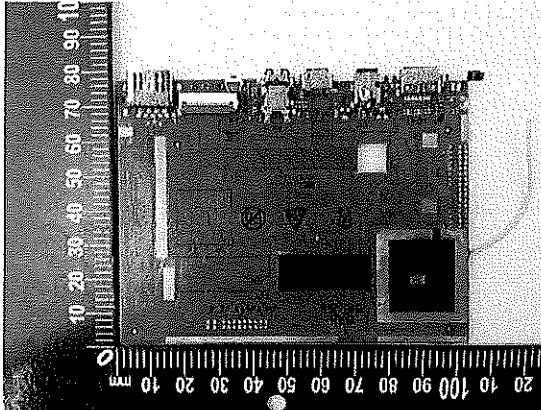
Date: 2016-03-10

Page 19 of 20

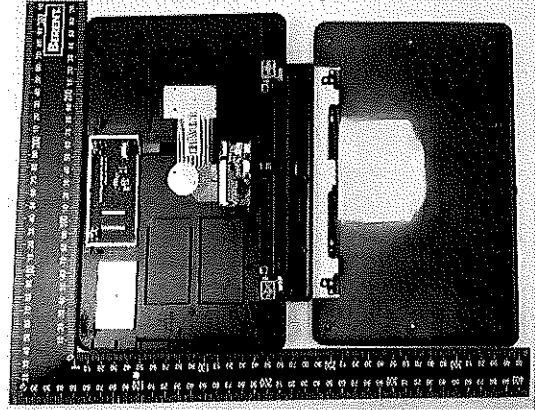
No.: MH192437

Photographs of EUT

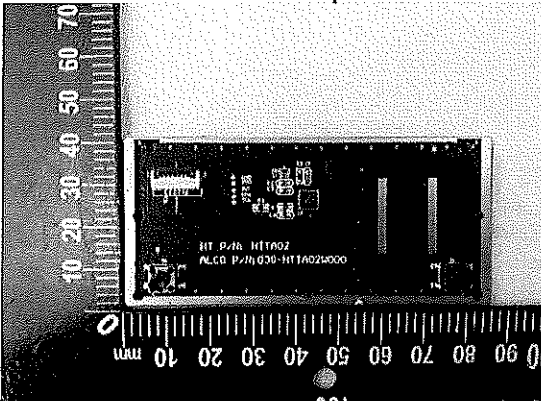
Inner Circuit Bottom View



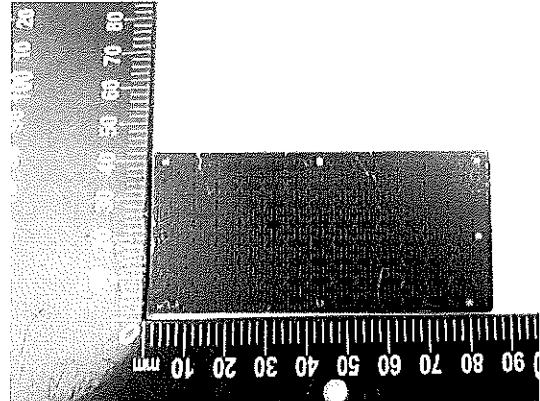
Inner Circuit Top View



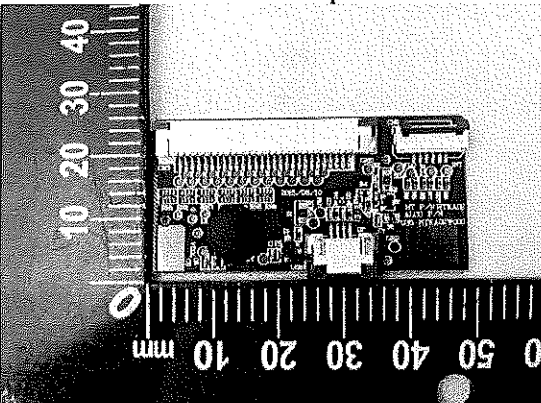
Inner Circuit Top View



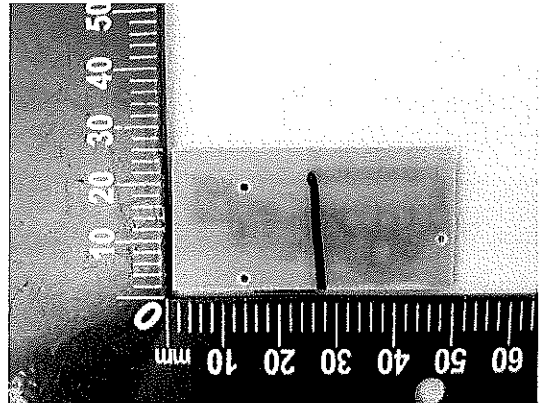
Inner Circuit Bottom View



Inner Circuit Top View



Inner Circuit Bottom View



The Hong Kong Standards and Testing Centre Limited

10 Dai Wang Street, Tai Po Industrial Estate, Tai Po, N.T., Hong Kong

Tel: +852 2666 1888 Fax: +852 2664 4353 Email: hkstc@hkstc.org Website: www.stc-group.org

This report shall not be reproduced unless with prior written approval from The Hong Kong Standards and Testing Centre Limited.

For Conditions of Issuance of this test report, please refer to the overleaf and Website.



STC Test Report

Date: 2016-03-10

Page 20 of 20

No.: MH192437

Photographs of EUT

Measurement of Radiated Emission Test Set Up



Measurement of Conducted Emission Test Set Up



***** End of Test Report *****

The Hong Kong Standards and Testing Centre Limited

10 Dai Wang Street, Tai Po Industrial Estate, Tai Po, N.T., Hong Kong

Tel: +852 2666 1888 Fax: +852 2664 4353 Email: hkstc@hkstc.org Website: www.stc-group.org

This report shall not be reproduced unless with prior written approval from The Hong Kong Standards and Testing Centre Limited.

For Conditions of Issuance of this test report, please refer to the overleaf and Website.