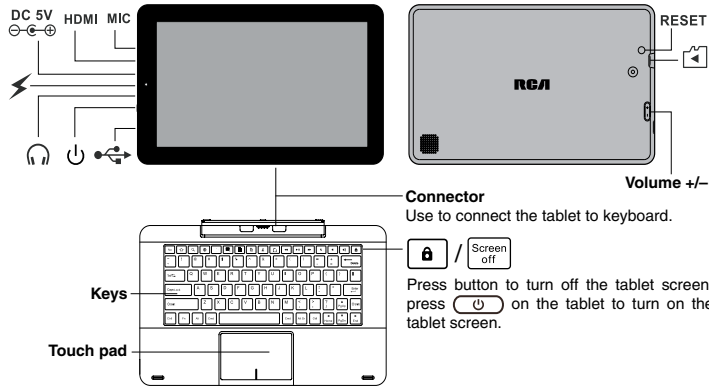


**RCA** RCT6213W87

Equipment tested for compliance as a complete unit

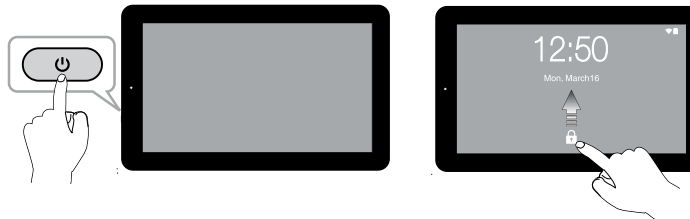


## Getting To Know Your Tablet



### Turn on the tablet in standby mode

- 1 Press the **Power** button to turn on the tablet screen.
- 2 Touch and drag to unlock.

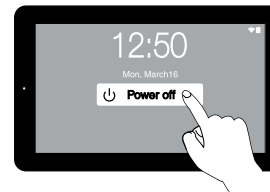


### Sleep / Standby mode

Press the **Power** button to turn off the tablet screen.

### Power off the tablet

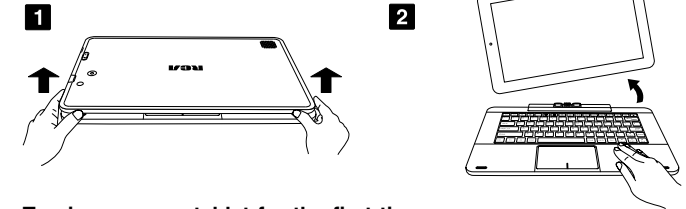
- 1 Press and hold the **Power** button until the **Power off** appears and tap it.
- 2 The tablet will be completely powered off.



Need Help? Visit [support.rcatablets.com](http://support.rcatablets.com)

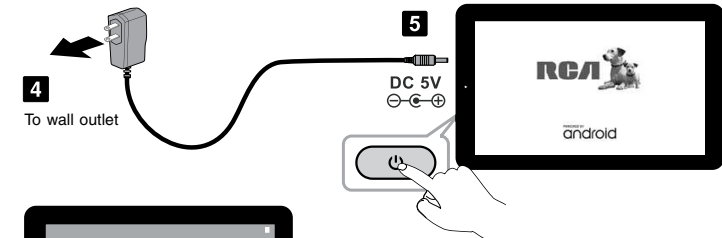
## Quick Start Guide

### Remove tablet from keyboard



### Turning on your tablet for the first time

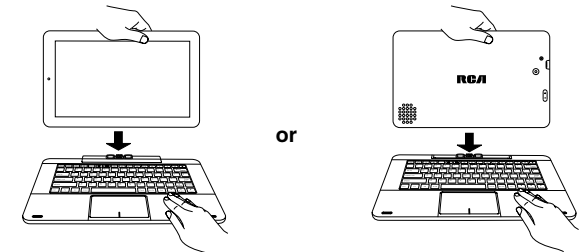
- 3 Be sure your home Wi-Fi network is turned on and connected to the internet.



- 6 Press and hold the **Power** button 4-5 seconds until the RCA logo appears.
- 7 Select the language, then tap and follow the onscreen instructions to setup the tablet.

### Tablet docking

- 8 There are two ways to dock the tablet onto the keyboard.



### NOTE

The keyboard connects to the tablet via the Connector. When the connection is successful, the tablet will automatically adjust its settings to use the keyboard.

## IMPORTANT SAFETY INSTRUCTIONS

Some of the following information may not apply to your particular product; however, as with any electronic product, precautions should be observed during handling and use.

- Read these instructions.
- Keep these instructions.
- Heed all warnings.
- Follow all instructions.
- Do not use this apparatus near water.
- Clean only with dry cloth.
- Do not block any ventilation openings. Install in accordance with the manufacturer's instructions.
- Do not install near any heat sources such as radiators, heat registers, stoves, or other apparatus (including amplifiers) that produce heat.
- Protect the power cord from being walked on or pinched particularly at plugs, convenience receptacles, and the point where they exit from the apparatus.
- Only use attachments / accessories specified by the manufacturer.
- Unplug this apparatus during lightning storms or when unused for long periods of time.
- Refer all servicing to qualified service personnel. Servicing is required when the apparatus has been damaged in any way, such as power-supply cord or plug is damaged, liquid has been spilled or objects have fallen into the apparatus, the apparatus has been exposed to rain or moisture, does not operate normally, or has been dropped.

### ADDITIONAL SAFETY INFORMATION

- The AC adapter and apparatus shall not be exposed to dripping or splashing and no objects filled with liquids, such as vases, shall be placed on the apparatus.
- Always leave sufficient space around the product for ventilation. Do not place product in or on a bed, rug, in a bookcase or cabinet that may prevent air flow through vent openings.
- Do not place lighted candles, cigarettes, cigars, etc. on the product.
- Care should be taken so that objects do not fall into the product.
- Do not attempt to disassemble the cabinet. This product does not contain customer serviceable components.
- To prevent the risk of fire or electric shock, do not expose this apparatus to rain or moisture.
- Do not play your headset at high volume. Hearing experts warn against extended high-volume play.

### Copyright and Trademark Notices

Android, Google, Google Play and other marks are trademarks of Google Inc.  
 The Wi-Fi CERTIFIED Logo is a certification mark of the Wi-Fi Alliance. The Wi-Fi Protected Setup Mark is a mark of the Wi-Fi Alliance.  
 The Bluetooth® word mark and logos are registered trademarks owned by the Bluetooth SIG Inc. Other trademarks and trade names are those of their respective owners.



The terms HDMI and HDMI High-Definition Multimedia Interface, and the HDMI Logo are trademarks or registered trademarks of HDMI Licensing LLC in the United States and other countries.

### About HDMI

High-Definition Multimedia Interface (HDMI) is a high-speed digital interface that can transmit uncompressed high definition video and digital multichannel audio. It delivers high quality picture and sound quality. HDMI is fully backward compatible with DVI. As required by the HDMI standard, connecting to HDMI or DVI products without HDCP (High bandwidth Digital Content Protection) will result in no Video or Audio output.

All other trademark appearing herein are the property of their respective owners. Specifications subject to change without notice.