

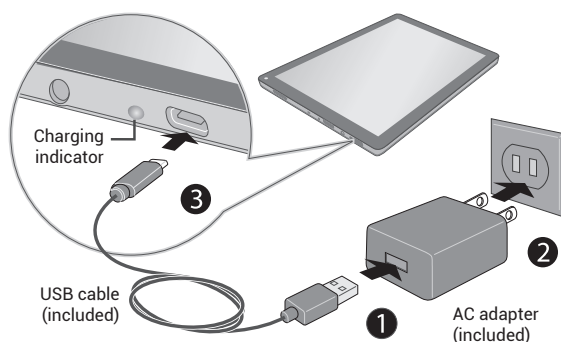
COMPAQ
CT201 / CT211

Quick Start Guide

BC

Quick Setup

1 Charging

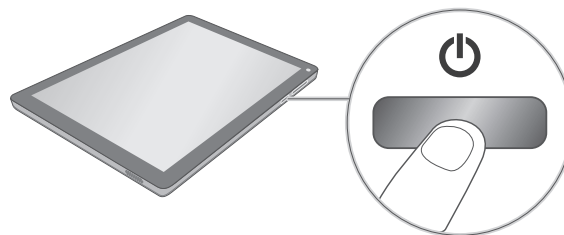


Charging indicator
Blue (blinking): Charging
Blue: Fully charged

IMPORTANT! Please Read.

We recommend fully charging your tablet before using it for the first time. For optimum performance, please connect the provided AC adapter to your tablet when it falls below 20% charge.

2 Power



Press and hold the **POWER** button 4~5 seconds until the logo appears.

Charging time will vary depending on remaining battery life. Charging from 0%, should take approximately 3-4 hours. ⚠️ Use **ONLY** the included AC adapter. You may not be able to turn on your tablet for at least 30 minutes if the battery was fully drained.

3 Settings

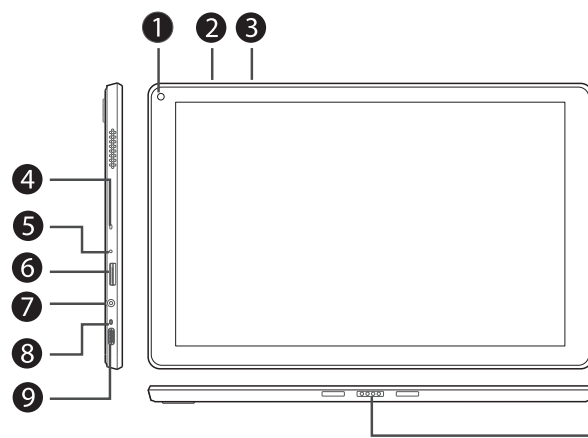
When using the tablet for the first time, you will be required to setup the following:

1. Select the language, then tap **START**.
2. Set the Wi-Fi.
3. Tap a network name to see more details or connect to it, and enter a password if necessary.
4. When prompted, sign in using the email address and password for your Google Account. If you don't have one yet, go ahead and create one.
5. Follow the onscreen instructions to setup the tablet.
6. Swipe up from the bottom of the home screen to enter the ALL APPS menu.

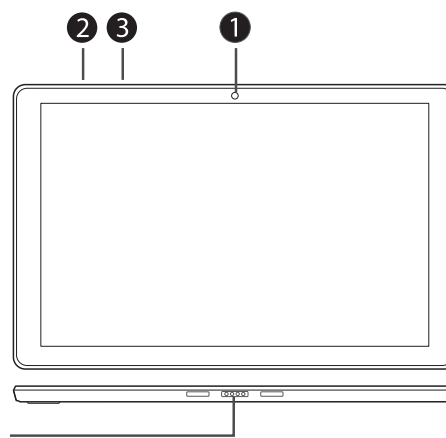


Please refer the owner's manual at <https://compaqttablets.zendesk.com/>

Quick Tour



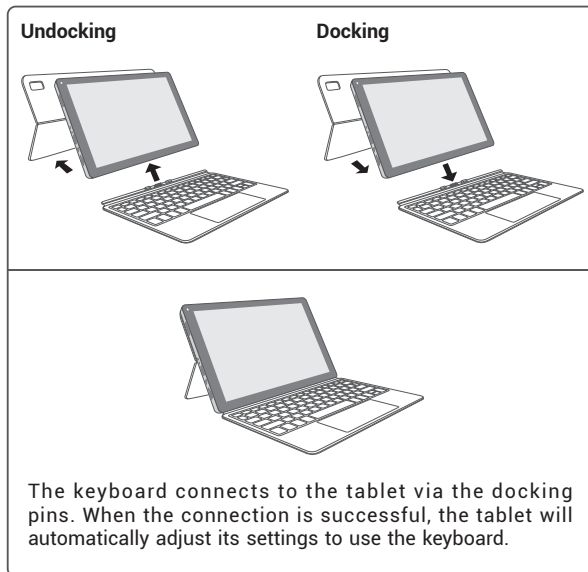
Model: CT201



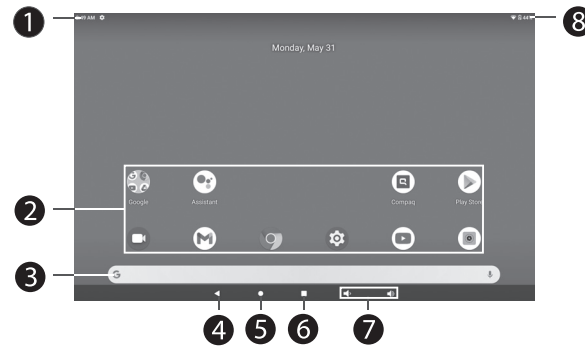
Model: CT211

- 1 Front camera
- 2 Volume +/- buttons
- 3 POWER button
- 4 Microphone
- 5 RESET
- 6 microSD card slot
- 7 Headphones jack
- 8 Charging indicator
- 9 USB Type-C port
- 10 Connector
- 11 Rear camera

Tablet docking / undocking



Navigating the Home Screen



- | | |
|------------------|---------------|
| 1 Notification | 5 Home |
| 2 App icons | 6 Recent Apps |
| 3 Google Search™ | 7 Volume +/- |
| 4 Back | 8 Status bar |

Notification & Status Icons

The below table lists some of the frequently used icons in the Notification & Status bar:

- | | | |
|--|-----------|---------------------------------------|
| | Message | Received new message. |
| | Music | The Google Play Music app is running. |
| | Wi-Fi | Has a Wi-Fi Internet connection. |
| | Bluetooth | Paired with other device. |

IMPORTANT SAFETY INSTRUCTIONS

Some of the following information may not apply to your particular product; however, as with any electronic product, precautions should be observed during handling and use.

- Read these instructions.
- Keep these instructions.
- Heed all warnings.
- Follow all instructions.
- Do not use this apparatus near water.
- Clean only with dry cloth.
- Do not block any ventilation openings. Install in accordance with the manufacturer's instructions.
- Do not install near any heat sources such as radiators, heat registers, stoves, or other apparatus (including amplifiers) that produce heat.
- Protect the power cord from being walked on or pinched particularly at plugs, convenience receptacles, and the point where they exit from the apparatus.
- Only use attachments / accessories specified by the manufacturer.
- Unplug this apparatus during lightning storms or when unused for long periods of time.
- Refer all servicing to qualified service personnel. Servicing is required when the apparatus has been damaged in any way, such as power-supply cord or plug is damaged, liquid has been spilled or objects have fallen into the apparatus, the apparatus has been exposed to rain or moisture, does not operate normally, or has been dropped.

ADDITIONAL SAFETY INFORMATION

- The AC adapter and apparatus shall not be exposed to dripping or splashing and no objects filled with liquids, such as vases, shall be placed on the apparatus.
- Always leave sufficient space around the product for ventilation. Do not place product in or on a bed, rug, in a bookcase or cabinet that may prevent air flow through vent openings.
- Do not place lighted candles, cigarettes, cigars, etc. on the product.
- Care should be taken so that objects do not fall into the product.
- Do not attempt to disassemble the cabinet. This product does not contain customer serviceable components.
- To prevent the risk of fire or electric shock, do not expose this apparatus to rain or moisture.
- Do not play your headset at high volume. Hearing experts warn against extended high-volume play.
- Use the devices where the ambient temperature is between 0° and 35° C (32° to 95° F). Low or high temperature conditions might cause the device to change its behavior to regulate its temperature. Using Android device in very cold conditions outside of its operating range might temporarily shorten battery life and could cause the device to turn off. Using the device in very hot conditions can permanently shorten battery life.

Warning

- Risk of explosion if the battery is replaced by an incorrect type. Dispose of used Battery according to the instructions.
- The battery cannot be subjected to during use, storage or transportation at high or low extreme temperatures and low air pressure at high altitude.
- Replacement of the battery with an incorrect type can defeat a safeguard.
- Disposal of the battery into fire or a hot oven, or mechanically crushing or cutting of the battery can result in an explosion.
- Leaving the battery in an extremely high temperature surrounding environment can result in an explosion or the leakage of flammable liquid of gas.
- Battery subjected to extremely low air pressure may result in an explosion or the leakage of flammable liquid or gas.

Warning: the AC adapter is used as disconnect device and it should remain readily operable during intended use. In order to disconnect the mains plug from mains completely, the AC adapter should be disconnected from the mains socket outlet completely. The socket-outlet shall be installed near the equipment and shall be easily accessible.

FCC Information

This device complies with Part 15 of the FCC Rules. Operation is subject to the following two conditions: (1) This device may not cause harmful interference, and (2) this device must accept any interference received, including interference that may cause undesired operation.

This equipment has been tested and found to comply with the limits for a Class B digital device, pursuant to Part 15 of FCC Rules. These limits are designed to provide reasonable protection against harmful interference in a residential installation. This equipment generates, uses, and can radiate radio frequency energy and, if not installed and used in accordance with the instructions, may cause harmful interference to radio communications.

However, there is no guarantee that interference will not occur in a particular installation. If this equipment does cause harmful interference to radio or television reception, which can be determined by turning the equipment off and on, the user is encouraged to try to correct the interference by one or more of the following measures:

- Reorient or relocate the receiving antenna.
- Increase the separation between the equipment and receiver.
- Connect the equipment into an outlet on a circuit different from that to which the receiver is connected.
- Consult the dealer or an experienced radio/TV technician for help.

Caution: the user that changes or modifications not expressly approved by the party responsible for compliance could void the user's authority to operate the equipment.

FCC RF Radiation Exposure Statement:

1. This Transmitter must not be co-located or operating in conjunction with any other antenna or transmitter.
2. This equipment complies with RF radiation exposure limits set forth for an uncontrolled environment. This equipment should be installed and operated with a minimum distance of 0cm between the radiator and your body.

CAN ICES-3(B) / NMB-3(B)

This device complies with Industry Canada License-exempt RSS Standard(s). Operation is subject to the following two conditions: (1) This device may not cause interference, and (2) this device must accept any interference, including interference that may cause undesired operation of the device.

Caution: Exposure to Radio Frequency Radiation.

To comply with the Canadian RF exposure compliance requirements, this device and its antenna must not be co-located or operated in conjunction with any other antenna or transmitter.

To comply with RSS 102 RF exposure compliance requirements, a separation distance of at least 0cm must be maintained between the antenna of this device and all persons.

Operation in the band 5150-5250 MHz is only for indoor use to reduce the potential for harmful interference to co-channel mobile satellite systems.

For the frequency 5600-5650 MHz, no operation is permitted.

Copyright and Trademark Notices

Google, Android, Google Play and other marks are trademarks of Google LLC.

The Wi-Fi CERTIFIED Logo is a certification mark of the Wi-Fi Alliance. The Wi-Fi Protected Setup Mark is a mark of the Wi-Fi Alliance.

The *Bluetooth*® word mark and logos are registered trademarks owned by the *Bluetooth* SIG Inc. Other trademarks and trade names are those of their respective owners.

