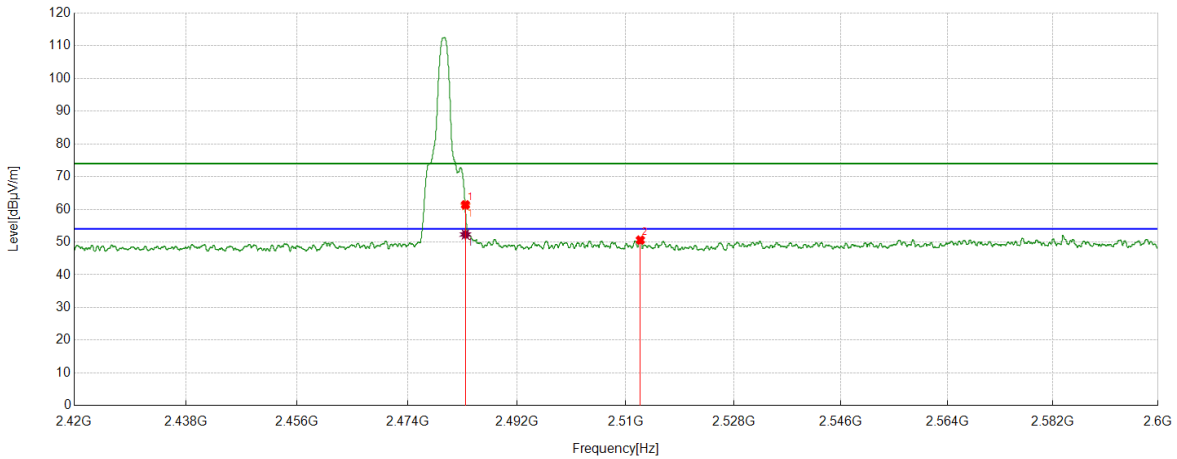


Test Mode	Channel	Polarization	Verdict
DH5	HCH	Vertical	PASS



PK Result:

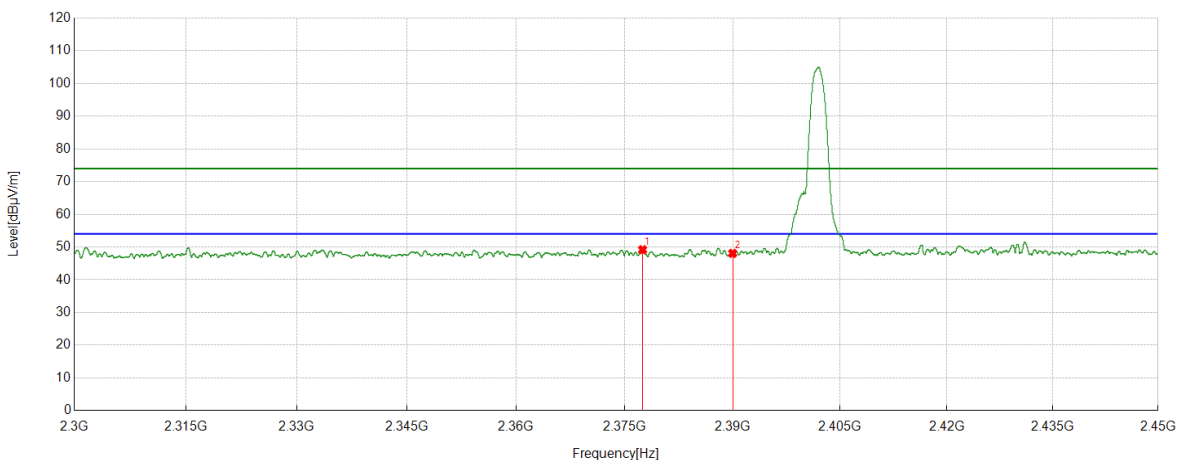
No.	Frequency	Reading Level	Correct Factor	Result	Limit	Margin	Remark
	[MHz]	[dBuV/m]	[dB]	[dBuV/m]	[dBuV/m]	[dB]	
1	2483.5000	50.50	10.64	61.14	74.00	-12.86	Vertical
2	2512.4191	39.54	11.07	50.61	74.00	-23.39	Vertical

AV Result:

No.	Frequency	Reading Level	Correct Factor	Result	Limit	Margin	Remark
	[MHz]	[dBuV/m]	[dB]	[dBuV/m]	[dBuV/m]	[dB]	
1	2483.5000	41.68	10.64	52.32	54.00	-1.68	Vertical

- Note: 1. Peak result: Peak detector, RBW: 1 MHz, VBW: 3 MHz.
 2. Average result: Peak detector, RBW: 1 MHz, VBW: 1/T MHz (refer to clause 7.1.).
 3. Measurement = Reading Level + Correct Factor.
 4. Only the worst case emission was recorded, if it complies with the limit, the other emissions deemed to comply with the limit.

Test Mode	Channel	Polarization	Verdict
2DH5	LCH	Horizontal	PASS

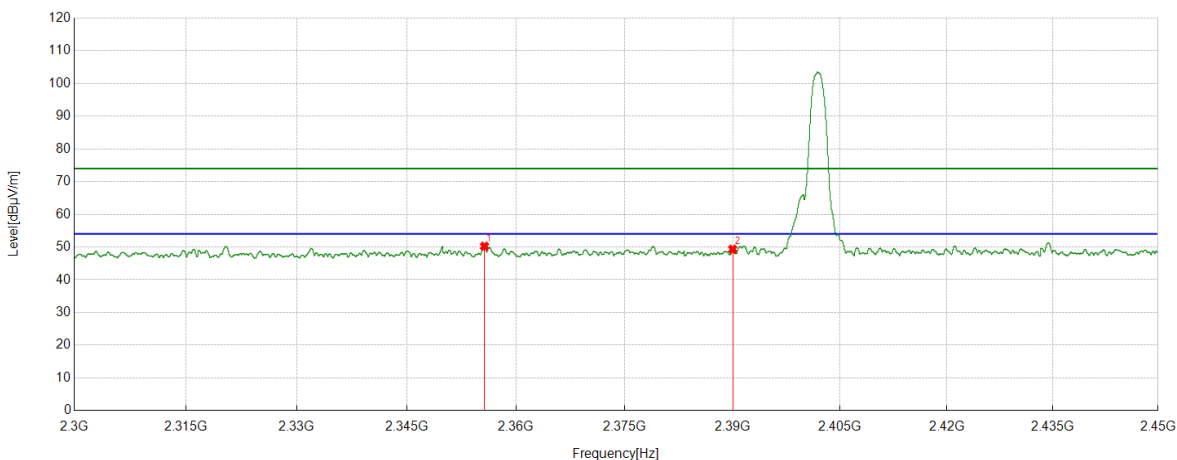


PK Result:

No.	Frequency	Reading Level	Correct Factor	Result	Limit	Margin	Remark
	[MHz]	[dBuV/m]	[dB]	[dBuV/m]	[dBuV/m]	[dB]	
1	2377.4847	38.92	10.26	49.18	74.00	-24.82	Horizontal
2	2390.0000	37.72	10.35	48.07	74.00	-25.93	Horizontal

- Note: 1. Peak result: Peak detector, RBW: 1 MHz, VBW: 3 MHz.
 2. Average result: Peak detector, RBW: 1 MHz, VBW: 1/T MHz (refer to clause 7.1.).
 3. Measurement = Reading Level + Correct Factor.
 4. Only the worst case emission was recorded, if it complies with the limit, the other emissions deemed to comply with the limit.

Test Mode	Channel	Polarization	Verdict
2DH5	LCH	Vertical	PASS

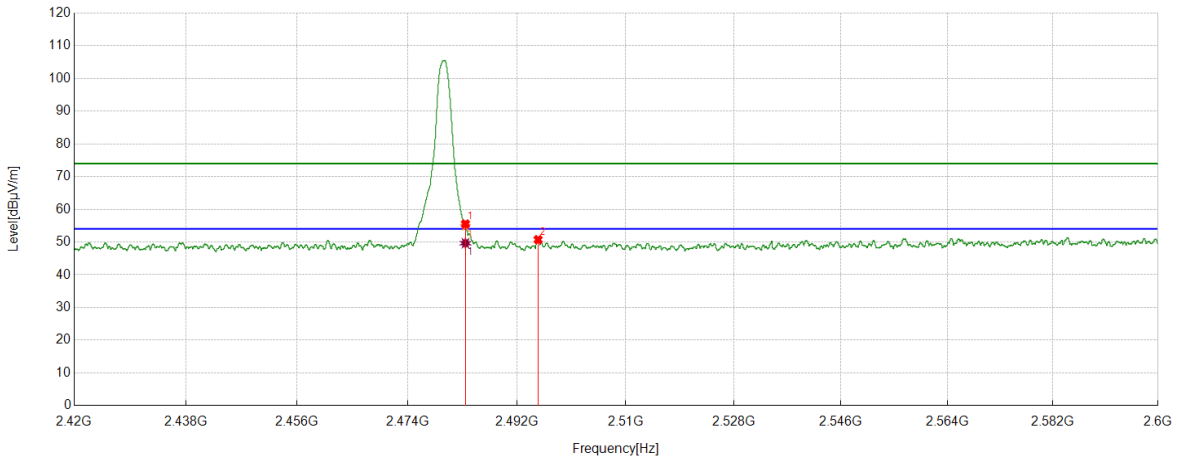


PK Result:

No.	Frequency	Reading Level	Correct Factor	Result	Limit	Margin	Remark
	[MHz]	[dBuV/m]	[dB]	[dBuV/m]	[dBuV/m]	[dB]	
1	2355.6757	40.33	9.91	50.24	74.00	-23.76	Vertical
2	2390.0000	38.98	10.35	49.33	74.00	-24.67	Vertical

- Note: 1. Peak result: Peak detector, RBW: 1 MHz, VBW: 3 MHz.
 2. Average result: Peak detector, RBW: 1 MHz, VBW: 1/T MHz (refer to clause 7.1.).
 3. Measurement = Reading Level + Correct Factor.
 4. Only the worst case emission was recorded, if it complies with the limit, the other emissions deemed to comply with the limit.

Test Mode	Channel	Polarization	Verdict
2DH5	HCH	Horizontal	PASS



PK Result:

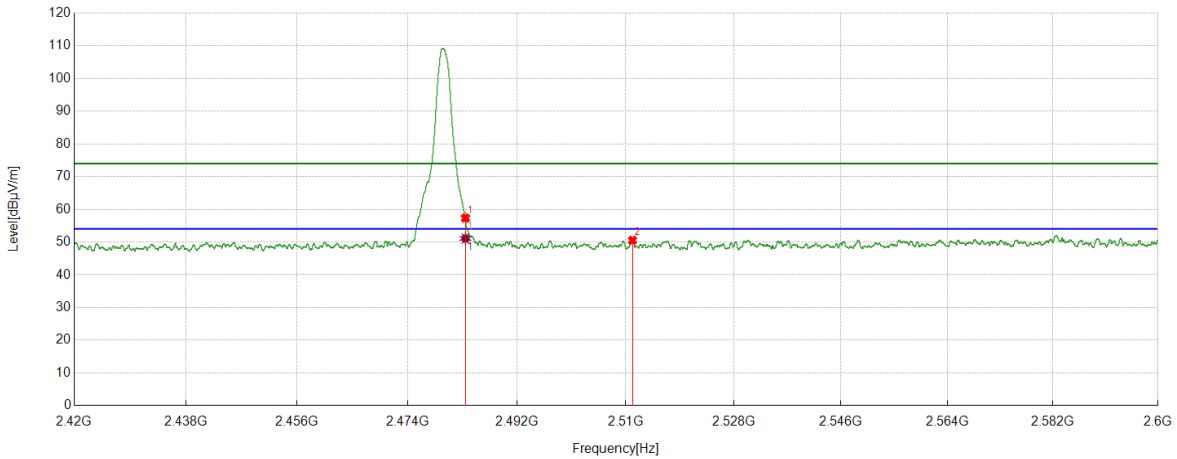
No.	Frequency	Reading Level	Correct Factor	Result	Limit	Margin	Remark
	[MHz]	[dBuV/m]	[dB]	[dBuV/m]	[dBuV/m]	[dB]	
1	2483.5000	47.30	10.64	54.94	74.00	-16.06	Horizontal
2	2495.4744	39.98	10.75	50.73	74.00	-23.27	Horizontal

AV Result:

No.	Frequency	Reading Level	Correct Factor	Result	Limit	Margin	Remark
	[MHz]	[dBuV/m]	[dB]	[dBuV/m]	[dBuV/m]	[dB]	
1	2483.5000	39.02	10.64	49.66	54.00	-4.34	Horizontal

- Note: 1. Peak result: Peak detector, RBW: 1 MHz, VBW: 3 MHz.
 2. Average result: Peak detector, RBW: 1 MHz, VBW: 1/T MHz (refer to clause 7.1.).
 3. Measurement = Reading Level + Correct Factor.
 4. Only the worst case emission was recorded, if it complies with the limit, the other emissions deemed to comply with the limit.

Test Mode	Channel	Polarization	Verdict
2DH5	HCH	Vertical	PASS



PK Result:

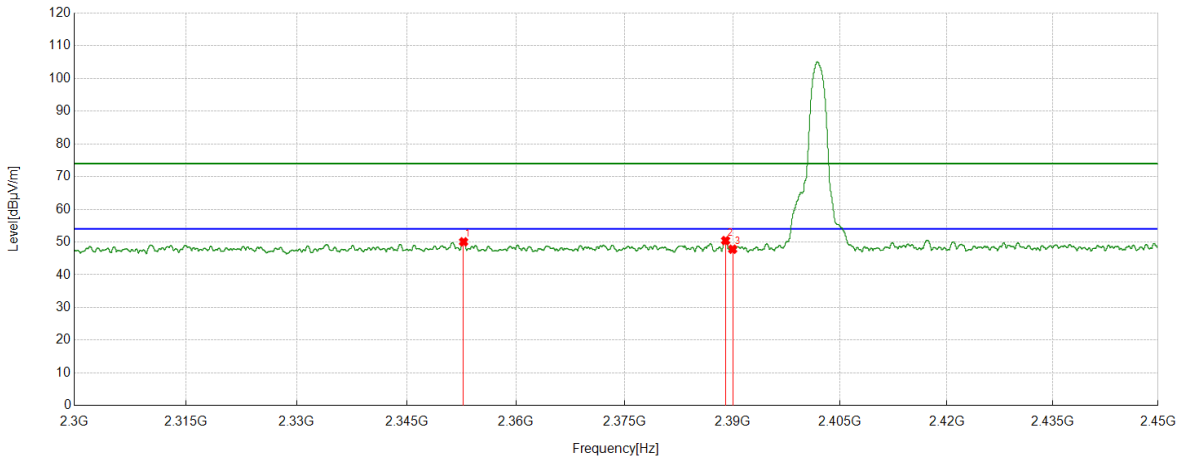
No.	Frequency	Reading Level	Correct Factor	Result	Limit	Margin	Remark
	[MHz]	[dBuV/m]	[dB]	[dBuV/m]	[dBuV/m]	[dB]	
1	2483.5000	46.85	10.64	57.49	74.00	-16.51	Vertical
2	2511.1139	39.44	11.09	50.53	74.00	-23.47	Vertical

AV Result:

No.	Frequency	Reading Level	Correct Factor	Result	Limit	Margin	Remark
	[MHz]	[dBuV/m]	[dB]	[dBuV/m]	[dBuV/m]	[dB]	
1	2483.5000	40.45	10.64	51.09	54.00	-2.91	Vertical

- Note: 1. Peak result: Peak detector, RBW: 1 MHz, VBW: 3 MHz.
 2. Average result: Peak detector, RBW: 1 MHz, VBW: 1/T MHz (refer to clause 7.1.).
 3. Measurement = Reading Level + Correct Factor.
 4. Only the worst case emission was recorded, if it complies with the limit, the other emissions deemed to comply with the limit.

Test Mode	Channel	Polarization	Verdict
3DH5	LCH	Horizontal	PASS

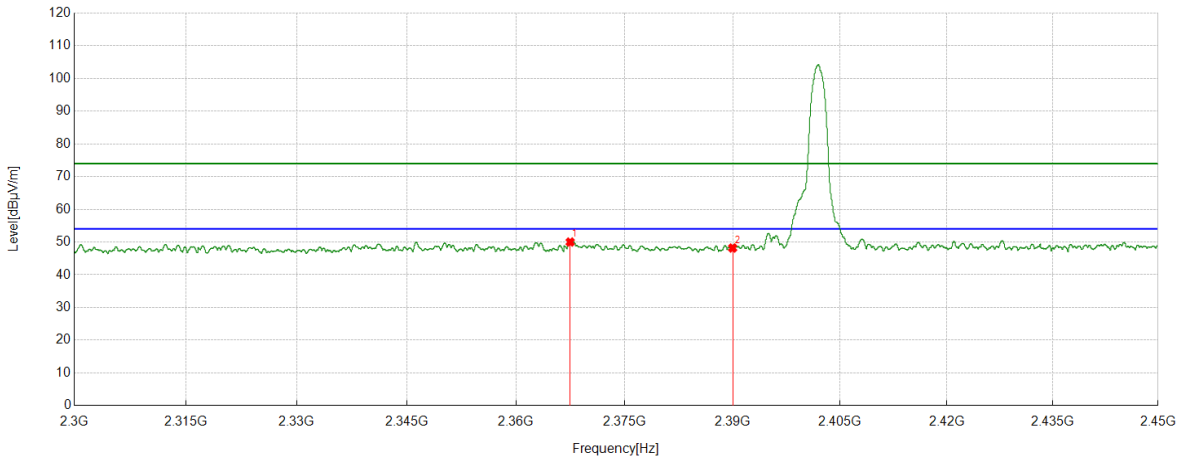


PK Result:

No.	Frequency	Reading Level	Correct Factor	Result	Limit	Margin	Remark
	[MHz]	[dBuV/m]	[dB]	[dBuV/m]	[dBuV/m]	[dB]	
1	2352.8066	40.17	9.90	50.07	74.00	-23.93	Horizontal
2	2389.0174	40.12	10.34	50.46	74.00	-23.54	Horizontal
3	2390.0000	37.46	10.35	47.81	74.00	-26.19	Horizontal

- Note: 1. Peak result: Peak detector, RBW: 1 MHz, VBW: 3 MHz.
 2. Average result: Peak detector, RBW: 1 MHz, VBW: 1/T MHz (refer to clause 7.1.).
 3. Measurement = Reading Level + Correct Factor.
 4. Only the worst case emission was recorded, if it complies with the limit, the other emissions deemed to comply with the limit.

Test Mode	Channel	Polarization	Verdict
3DH5	LCH	Vertical	PASS

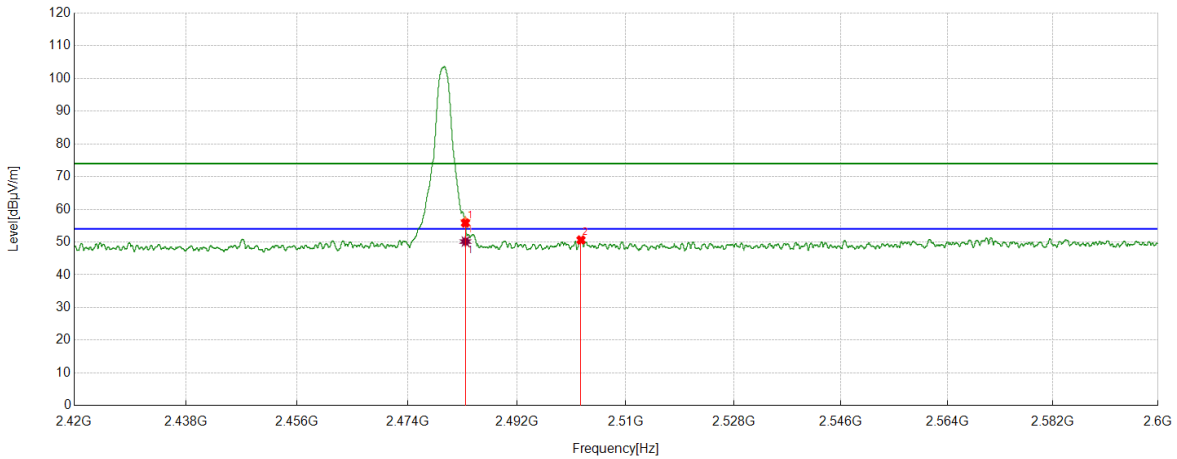


PK Result:

No.	Frequency	Reading Level	Correct Factor	Result	Limit	Margin	Remark
	[MHz]	[dBuV/m]	[dB]	[dBuV/m]	[dBuV/m]	[dB]	
1	2367.4709	39.94	10.07	50.01	74.00	-23.99	Vertical
2	2390.0000	37.83	10.35	48.18	74.00	-25.82	Vertical

- Note: 1. Peak result: Peak detector, RBW: 1 MHz, VBW: 3 MHz.
 2. Average result: Peak detector, RBW: 1 MHz, VBW: 1/T MHz (refer to clause 7.1.).
 3. Measurement = Reading Level + Correct Factor.
 4. Only the worst case emission was recorded, if it complies with the limit, the other emissions deemed to comply with the limit.

Test Mode	Channel	Polarization	Verdict
3DH5	HCH	Horizontal	PASS



PK Result:

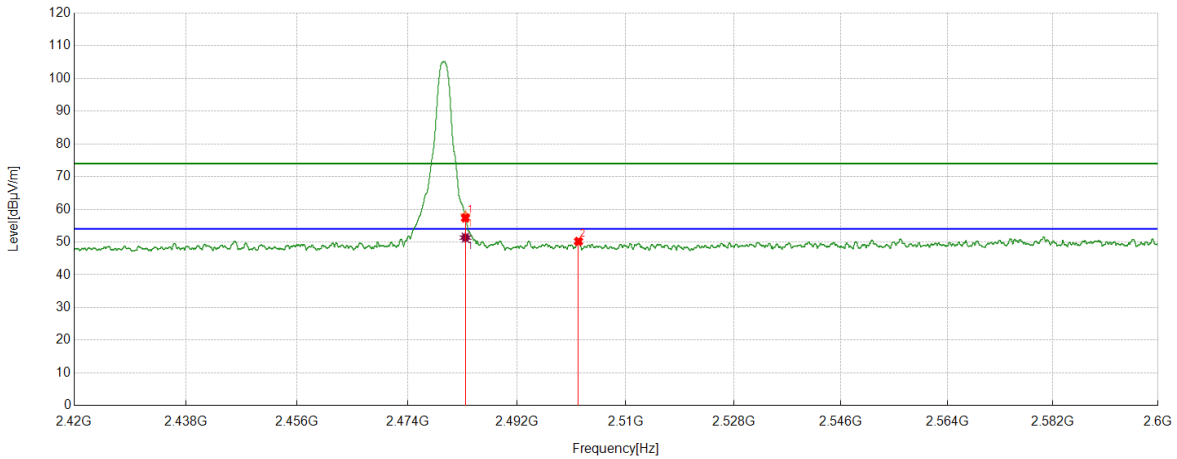
No.	Frequency	Reading Level	Correct Factor	Result	Limit	Margin	Remark
	[MHz]	[dBuV/m]	[dB]	[dBuV/m]	[dBuV/m]	[dB]	
1	2483.5000	45.67	10.64	56.31	74.00	-17.69	Horizontal
2	2502.5628	39.80	10.83	50.63	74.00	-23.37	Horizontal

AV Result:

No.	Frequency	Reading Level	Correct Factor	Result	Limit	Margin	Remark
	[MHz]	[dBuV/m]	[dB]	[dBuV/m]	[dBuV/m]	[dB]	
1	2483.5000	39.51	10.64	50.15	54.00	-3.85	Horizontal

- Note: 1. Peak result: Peak detector, RBW: 1 MHz, VBW: 3 MHz.
 2. Average result: Peak detector, RBW: 1 MHz, VBW: 1/T MHz (refer to clause 7.1.).
 3. Measurement = Reading Level + Correct Factor.
 4. Only the worst case emission was recorded, if it complies with the limit, the other emissions deemed to comply with the limit.

Test Mode	Channel	Polarization	Verdict
3DH5	HCH	Vertical	PASS



PK Result:

No.	Frequency	Reading Level	Correct Factor	Result	Limit	Margin	Remark
	[MHz]	[dBuV/m]	[dB]	[dBuV/m]	[dBuV/m]	[dB]	
1	2483.5000	47.42	10.64	58.06	74.00	-15.94	Vertical
2	2502.1578	39.39	10.81	50.20	74.00	-23.80	Vertical

AV Result:

No.	Frequency	Reading Level	Correct Factor	Result	Limit	Margin	Remark
	[MHz]	[dBuV/m]	[dB]	[dBuV/m]	[dBuV/m]	[dB]	
1	2483.5000	40.72	10.64	51.36	54.00	-2.64	Vertical

- Note: 1. Peak result: Peak detector, RBW: 1 MHz, VBW: 3 MHz.
 2. Average result: Peak detector, RBW: 1 MHz, VBW: 1/T MHz (refer to clause 7.1.).
 3. Measurement = Reading Level + Correct Factor.
 4. Only the worst case emission was recorded, if it complies with the limit, the other emissions deemed to comply with the limit.

7.4. SPURIOUS EMISSIONS

TEST RESULTS TABLE

1. For 1GHz~3GHz

Temperature	22°C	Relative Humidity	56%
Atmosphere Pressure	101kPa	Test Voltage	DC 13.2V

Test Mode	Channel	Puw(dBm)	Verdict
DH5	LCH	<Limit	PASS
	MCH	<Limit	PASS
	HCH	<Limit	PASS
2DH5	LCH	<Limit	PASS
	MCH	<Limit	PASS
	HCH	<Limit	PASS
3DH5	LCH	<Limit	PASS
	MCH	<Limit	PASS
	HCH	<Limit	PASS

2. For 3GHz~18GHz

Temperature	22°C	Relative Humidity	56%
Atmosphere Pressure	101kPa	Test Voltage	DC 13.2V

Test Mode	Channel	Puw(dBm)	Verdict
DH5	LCH	<Limit	PASS
	MCH	<Limit	PASS
	HCH	<Limit	PASS
2DH5	LCH	<Limit	PASS
	MCH	<Limit	PASS
	HCH	<Limit	PASS
3DH5	LCH	<Limit	PASS
	MCH	<Limit	PASS
	HCH	<Limit	PASS

3. For 18GHz~26.5GHz

Temperature	22°C	Relative Humidity	56%
Atmosphere Pressure	101kPa	Test Voltage	DC 13.2V

Test Mode	Channel	Puw(dBm)	Verdict
DH5	MCH	<Limit	PASS

Note:

Through pre-testing all the test modes and test channels, but only the data of the worst case is included in this test report.

4. For 30MHz~1GHz

Temperature	22°C	Relative Humidity	56%
Atmosphere Pressure	101kPa	Test Voltage	DC 13.2V

Test Mode	Channel	P _{uw} (dBm)	Verdict
DH5	MCH	<Limit	PASS

Note:

Through pre-testing all the test modes and test channels, but only the data of the worst case is included in this test report.

5. For 9kHz~30MHz

Temperature	22°C	Relative Humidity	56%
Atmosphere Pressure	101kPa	Test Voltage	DC 13.2V

Test Mode	Channel	P _{uw} (dBm)	Verdict
DH5	MCH	<Limit	PASS

Note:

Through pre-testing all the test modes and test channels, but only the data of the worst case is included in this test report.

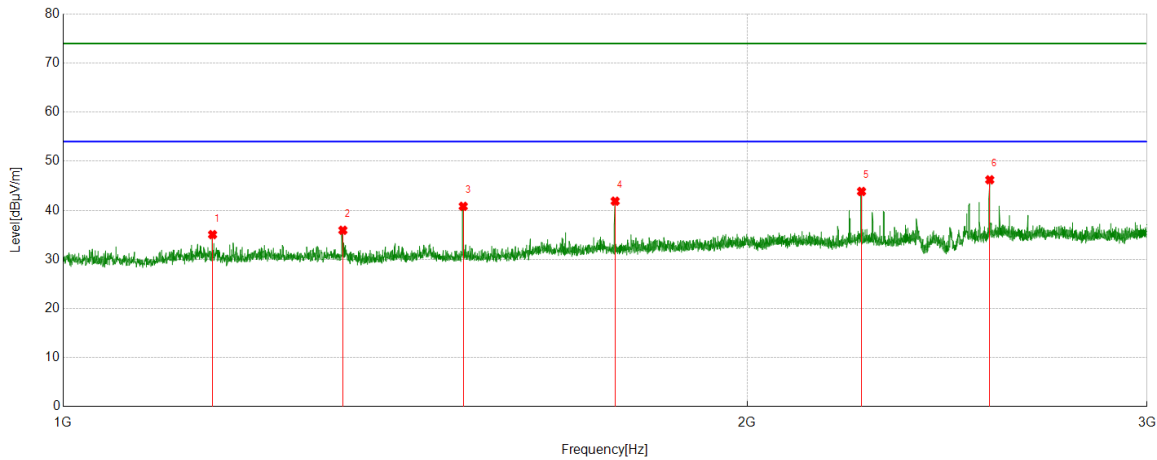
Note:

Through pre-testing all the test conditions (the two modules were transmitting at different channels simultaneously, the two modules were transmitting at same channel simultaneously, only one module was transmitting and another module was idle), the test condition two modules transmitting at same channel simultaneously was the worst case and recorded in this test report.

Part 1: 1GHz~3GHz

HARMONICS AND SPURIOUS EMISSIONS

Test Mode	Channel	Polarization	Verdict
DH5	LCH	Horizontal	PASS

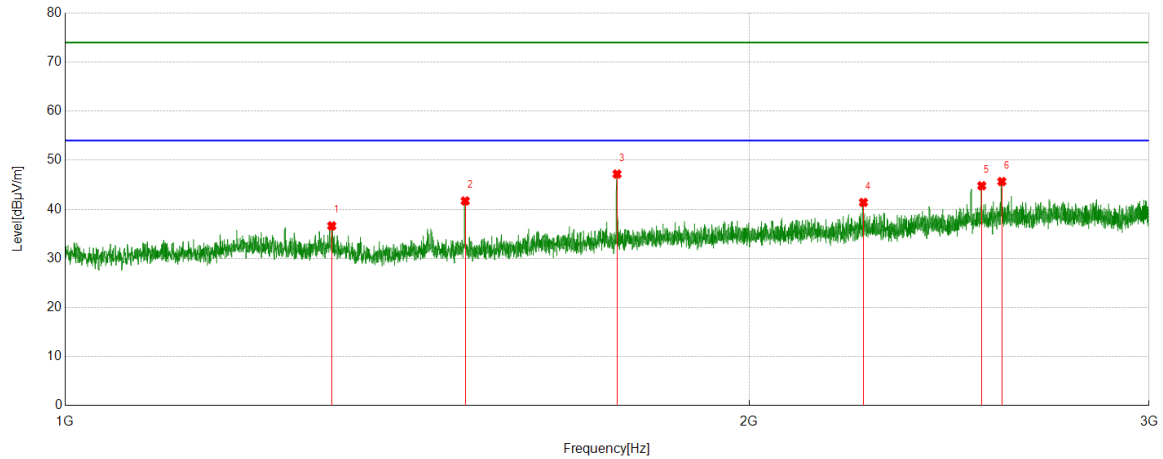


PK Result:

No.	Frequency	Reading Level	Correct Factor	Result	Limit	Margin	Remark
	[MHz]	[dBuV/m]	[dB]	[dBuV/m]	[dBuV/m]	[dB]	
1	1163.5204	56.49	-21.44	35.05	74.00	-38.95	Horizontal
2	1327.791	56.54	-20.60	35.94	74.00	-38.06	Horizontal
3	1500.0625	60.54	-19.72	40.82	74.00	-33.18	Horizontal
4	1749.8437	59.92	-18.05	41.87	74.00	-32.13	Horizontal
5	2246.1558	58.83	-14.99	43.84	74.00	-30.16	Horizontal
6	2557.9447	60.00	-13.78	46.22	74.00	-27.78	Horizontal

- Note: 1. Measurement = Reading Level + Correct Factor.
 2. If Peak Result complies with AV limit, AV Result is deemed to comply with AV limit.
 3. Test setup: RBW: 1 MHz, VBW: 3 MHz, Sweep time: auto.
 4. Peak: Peak detector.
 5. For below 3GHz part, filter losses were only considered in the spurious frequency bands and the authorized band was not corrected for Band Reject Filter losses.
 6. Only the worst case emission was recorded, if it complies with the limit, the other emissions deemed to comply with the limit.

Test Mode	Channel	Polarization	Verdict
DH5	LCH	Vertical	PASS

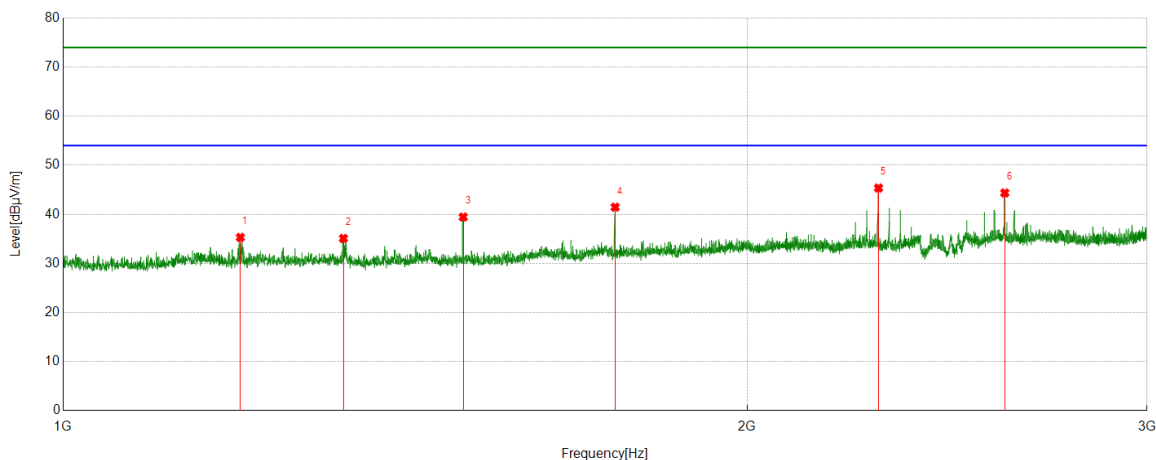


PK Result:

No.	Frequency	Reading Level	Correct Factor	Result	Limit	Margin	Remark
	[MHz]	[dBuV/m]	[dB]	[dBuV/m]	[dBuV/m]	[dB]	
1	1310.2888	57.07	-20.44	36.63	74.00	-37.37	Vertical
2	1500.0625	61.43	-19.72	41.71	74.00	-32.29	Vertical
3	1749.5937	65.24	-18.05	47.19	74.00	-26.81	Vertical
4	2245.9057	56.40	-14.99	41.41	74.00	-32.59	Vertical
5	2532.1915	58.34	-13.54	44.80	74.00	-29.20	Vertical
6	2584.198	59.11	-13.45	45.66	74.00	-28.34	Vertical

- Note: 1. Measurement = Reading Level + Correct Factor.
 2. If Peak Result complies with AV limit, AV Result is deemed to comply with AV limit.
 3. Test setup: RBW: 1 MHz, VBW: 3 MHz, Sweep time: auto.
 4. Peak: Peak detector.
 5. For below 3GHz part, filter losses were only considered in the spurious frequency bands and the authorized band was not corrected for Band Reject Filter losses.
 6. Only the worst case emission was recorded, if it complies with the limit, the other emissions deemed to comply with the limit.

Test Mode	Channel	Polarization	Verdict
DH5	MCH	Horizontal	PASS

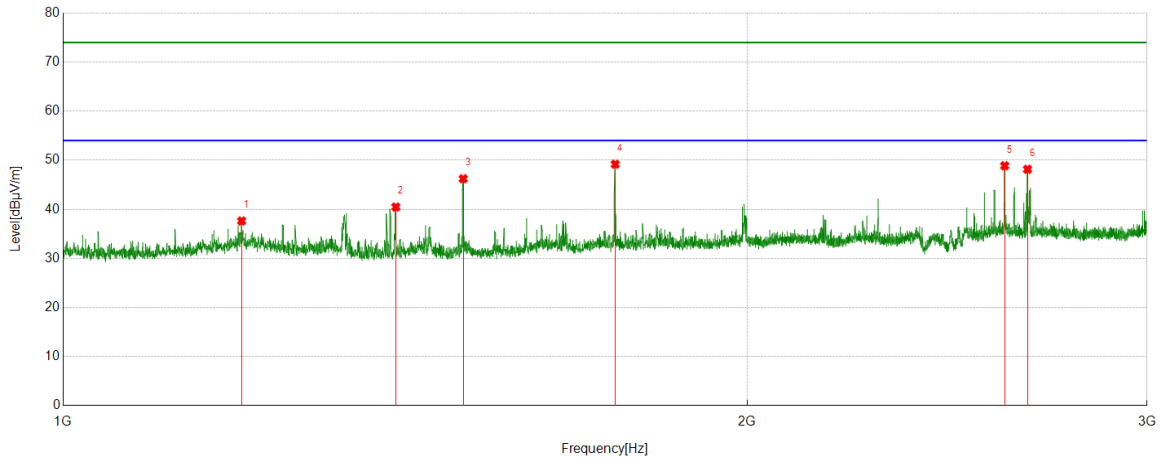


PK Result:

No.	Frequency	Reading Level	Correct Factor	Result	Limit	Margin	Remark
	[MHz]	[dBuV/m]	[dB]	[dBuV/m]	[dBuV/m]	[dB]	
1	1196.7746	57.25	-21.95	35.30	74.00	-38.70	Horizontal
2	1328.5411	55.68	-20.59	35.09	74.00	-38.91	Horizontal
3	1500.0625	59.17	-19.72	39.45	74.00	-34.55	Horizontal
4	1749.8437	59.51	-18.05	41.46	74.00	-32.54	Horizontal
5	2285.1606	60.57	-15.21	45.36	74.00	-28.64	Horizontal
6	2597.1996	57.63	-13.27	44.36	74.00	-29.64	Horizontal

- Note: 1. Measurement = Reading Level + Correct Factor.
 2. If Peak Result complies with AV limit, AV Result is deemed to comply with AV limit.
 3. Test setup: RBW: 1 MHz, VBW: 3 MHz, Sweep time: auto.
 4. Peak: Peak detector.
 5. For below 3GHz part, filter losses were only considered in the spurious frequency bands and the authorized band was not corrected for Band Reject Filter losses.
 6. Only the worst case emission was recorded, if it complies with the limit, the other emissions deemed to comply with the limit.

Test Mode	Channel	Polarization	Verdict
DH5	MCH	Vertical	PASS

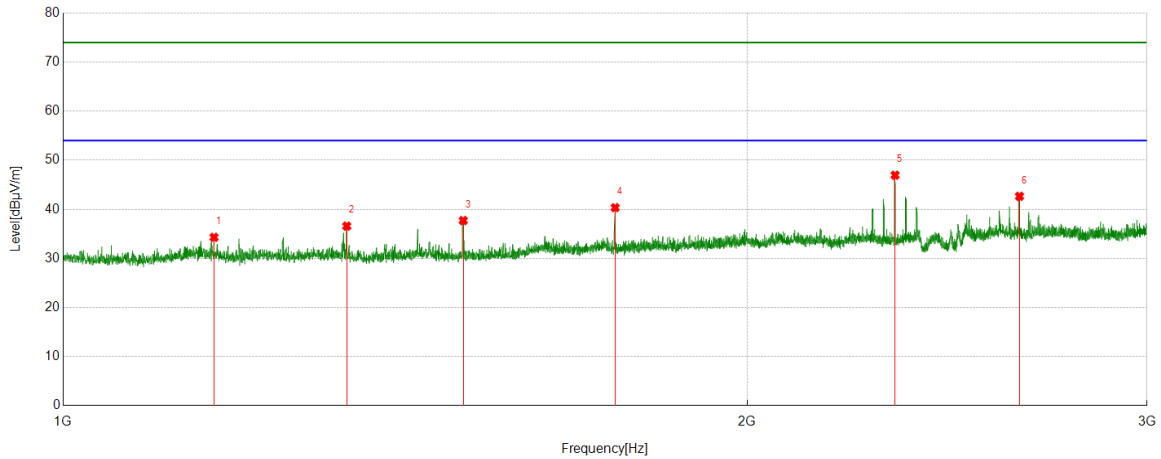


PK Result:

No.	Frequency	Reading Level	Correct Factor	Result	Limit	Margin	Remark
	[MHz]	[dBuV/m]	[dB]	[dBuV/m]	[dBuV/m]	[dB]	
1	1198.2748	59.60	-21.97	37.63	74.00	-36.37	Vertical
2	1401.0501	60.89	-20.42	40.47	74.00	-33.53	Vertical
3	1500.0625	65.95	-19.72	46.23	74.00	-27.77	Vertical
4	1749.8437	67.23	-18.05	49.18	74.00	-24.82	Vertical
5	2596.9496	62.15	-13.28	48.87	74.00	-25.13	Vertical
6	2657.7072	61.38	-13.22	48.16	74.00	-25.84	Vertical

- Note: 1. Measurement = Reading Level + Correct Factor.
 2. If Peak Result complies with AV limit, AV Result is deemed to comply with AV limit.
 3. Test setup: RBW: 1 MHz, VBW: 3 MHz, Sweep time: auto.
 4. Peak: Peak detector.
 5. For below 3GHz part, filter losses were only considered in the spurious frequency bands and the authorized band was not corrected for Band Reject Filter losses.
 6. Only the worst case emission was recorded, if it complies with the limit, the other emissions deemed to comply with the limit.

Test Mode	Channel	Polarization	Verdict
DH5	HCH	Horizontal	PASS

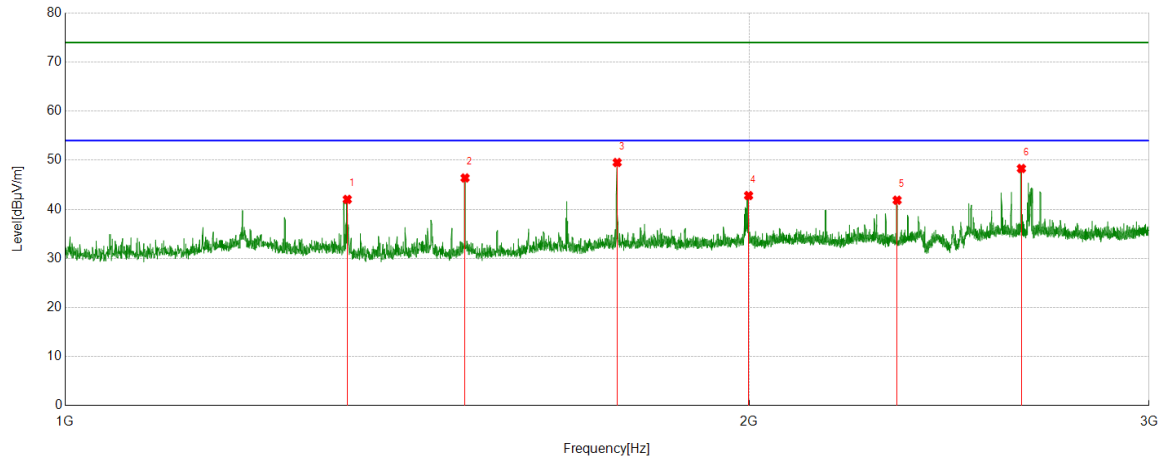


PK Result:

No.	Frequency	Reading Level	Correct Factor	Result	Limit	Margin	Remark
	[MHz]	[dBuV/m]	[dB]	[dBuV/m]	[dBuV/m]	[dB]	
1	1165.2707	55.76	-21.46	34.30	74.00	-39.70	Horizontal
2	1333.0416	57.17	-20.59	36.58	74.00	-37.42	Horizontal
3	1500.0625	57.44	-19.72	37.72	74.00	-36.28	Horizontal
4	1749.8437	58.39	-18.05	40.34	74.00	-33.66	Horizontal
5	2323.9155	62.06	-15.10	46.96	74.00	-27.04	Horizontal
6	2636.2045	56.03	-13.38	42.65	74.00	-31.35	Horizontal

- Note: 1. Measurement = Reading Level + Correct Factor.
 2. If Peak Result complies with AV limit, AV Result is deemed to comply with AV limit.
 3. Test setup: RBW: 1 MHz, VBW: 3 MHz, Sweep time: auto.
 4. Peak: Peak detector.
 5. For below 3GHz part, filter losses were only considered in the spurious frequency bands and the authorized band was not corrected for Band Reject Filter losses.
 6. Only the worst case emission was recorded, if it complies with the limit, the other emissions deemed to comply with the limit.

Test Mode	Channel	Polarization	Verdict
DH5	HCH	Vertical	PASS

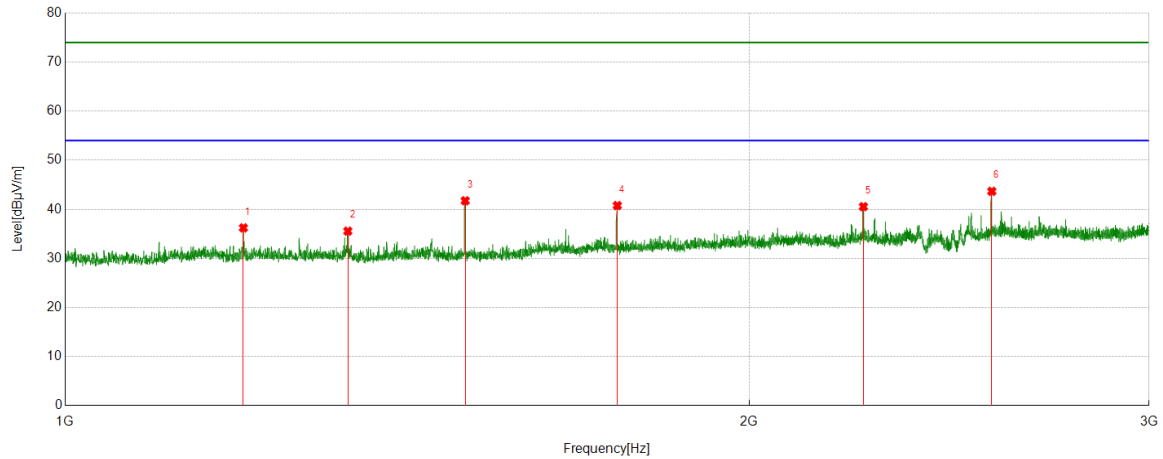


PK Result:

No.	Frequency	Reading Level	Correct Factor	Result	Limit	Margin	Remark
	[MHz]	[dBuV/m]	[dB]	[dBuV/m]	[dBuV/m]	[dB]	
1	1331.0414	62.61	-20.59	42.02	74.00	-31.98	Vertical
2	1499.8125	66.11	-19.72	46.39	74.00	-27.61	Vertical
3	1749.8437	67.59	-18.05	49.54	74.00	-24.46	Vertical
4	1999.1249	59.09	-16.29	42.80	74.00	-31.20	Vertical
5	2323.9155	56.96	-15.10	41.86	74.00	-32.14	Vertical
6	2635.9545	61.68	-13.37	48.31	74.00	-25.69	Vertical

- Note: 1. Measurement = Reading Level + Correct Factor.
 2. If Peak Result complies with AV limit, AV Result is deemed to comply with AV limit.
 3. Test setup: RBW: 1 MHz, VBW: 3 MHz, Sweep time: auto.
 4. Peak: Peak detector.
 5. For below 3GHz part, filter losses were only considered in the spurious frequency bands and the authorized band was not corrected for Band Reject Filter losses.
 6. Only the worst case emission was recorded, if it complies with the limit, the other emissions deemed to comply with the limit.

Test Mode	Channel	Polarization	Verdict
2DH5	LCH	Horizontal	PASS

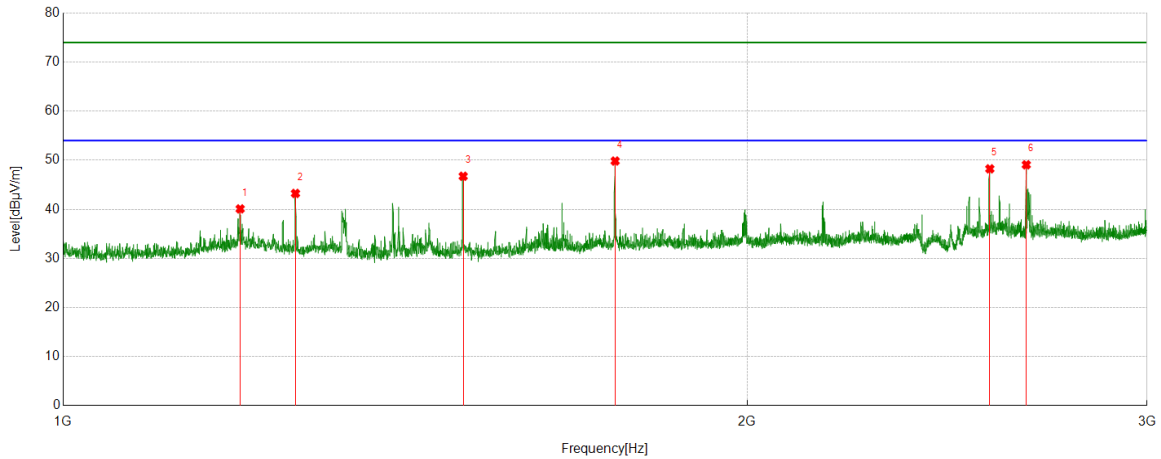


PK Result:

No.	Frequency	Reading Level	Correct Factor	Result	Limit	Margin	Remark
	[MHz]	[dBuV/m]	[dB]	[dBuV/m]	[dBuV/m]	[dB]	
1	1198.0248	58.19	-21.96	36.23	74.00	-37.77	Horizontal
2	1331.7915	56.15	-20.59	35.56	74.00	-38.44	Horizontal
3	1500.0625	61.46	-19.72	41.74	74.00	-32.26	Horizontal
4	1750.0938	58.82	-18.05	40.77	74.00	-33.23	Horizontal
5	2245.9057	55.54	-14.99	40.55	74.00	-33.45	Horizontal
6	2558.1948	57.45	-13.78	43.67	74.00	-30.33	Horizontal

- Note: 1. Measurement = Reading Level + Correct Factor.
 2. If Peak Result complies with AV limit, AV Result is deemed to comply with AV limit.
 3. Test setup: RBW: 1 MHz, VBW: 3 MHz, Sweep time: auto.
 4. Peak: Peak detector.
 5. For below 3GHz part, filter losses were only considered in the spurious frequency bands and the authorized band was not corrected for Band Reject Filter losses.
 6. Only the worst case emission was recorded, if it complies with the limit, the other emissions deemed to comply with the limit.

Test Mode	Channel	Polarization	Verdict
2DH5	LCH	Vertical	PASS

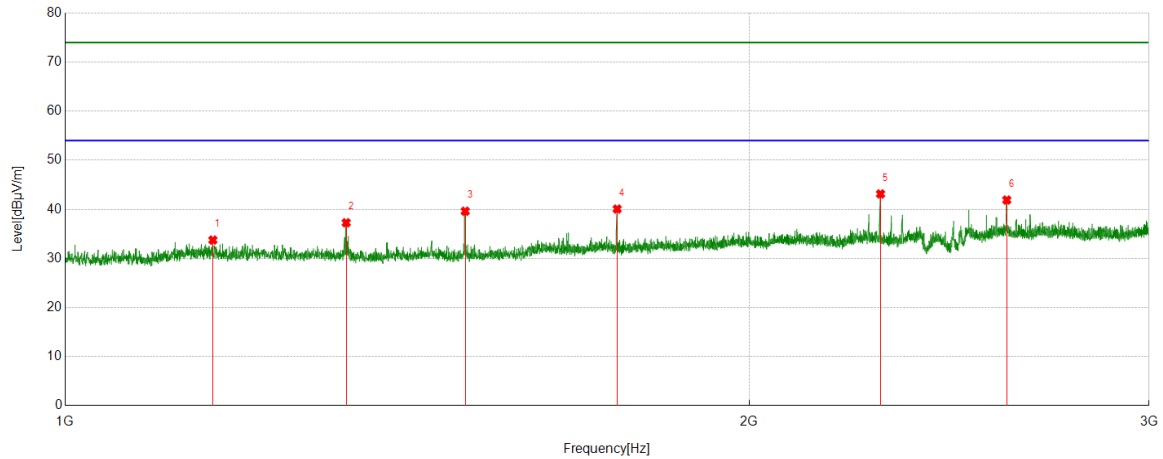


PK Result:

No.	Frequency	Reading Level	Correct Factor	Result	Limit	Margin	Remark
	[MHz]	[dBuV/m]	[dB]	[dBuV/m]	[dBuV/m]	[dB]	
1	1196.5246	62.04	-21.95	40.09	74.00	-33.91	Vertical
2	1265.5332	63.90	-20.66	43.24	74.00	-30.76	Vertical
3	1500.0625	66.46	-19.72	46.74	74.00	-27.26	Vertical
4	1749.8437	67.89	-18.05	49.84	74.00	-24.16	Vertical
5	2558.1948	62.03	-13.78	48.25	74.00	-25.75	Vertical
6	2654.4568	62.29	-13.21	49.08	74.00	-24.92	Vertical

- Note: 1. Measurement = Reading Level + Correct Factor.
 2. If Peak Result complies with AV limit, AV Result is deemed to comply with AV limit.
 3. Test setup: RBW: 1 MHz, VBW: 3 MHz, Sweep time: auto.
 4. Peak: Peak detector.
 5. For below 3GHz part, filter losses were only considered in the spurious frequency bands and the authorized band was not corrected for Band Reject Filter losses.
 6. Only the worst case emission was recorded, if it complies with the limit, the other emissions deemed to comply with the limit.

Test Mode	Channel	Polarization	Verdict
2DH5	MCH	Horizontal	PASS

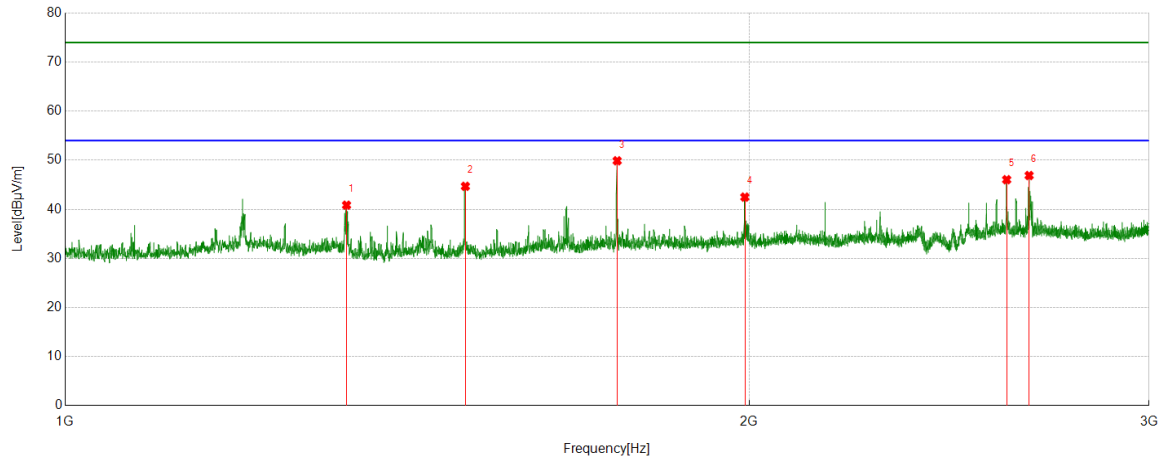


PK Result:

No.	Frequency	Reading Level	Correct Factor	Result	Limit	Margin	Remark
	[MHz]	[dBuV/m]	[dB]	[dBuV/m]	[dBuV/m]	[dB]	
1	1161.5202	55.16	-21.42	33.74	74.00	-40.26	Horizontal
2	1329.5412	57.85	-20.58	37.27	74.00	-36.73	Horizontal
3	1500.0625	59.34	-19.72	39.62	74.00	-34.38	Horizontal
4	1749.8437	58.11	-18.05	40.06	74.00	-33.94	Horizontal
5	2285.1606	58.35	-15.21	43.14	74.00	-30.86	Horizontal
6	2597.1996	55.17	-13.27	41.90	74.00	-32.10	Horizontal

- Note: 1. Measurement = Reading Level + Correct Factor.
 2. If Peak Result complies with AV limit, AV Result is deemed to comply with AV limit.
 3. Test setup: RBW: 1 MHz, VBW: 3 MHz, Sweep time: auto.
 4. Peak: Peak detector.
 5. For below 3GHz part, filter losses were only considered in the spurious frequency bands and the authorized band was not corrected for Band Reject Filter losses.
 6. Only the worst case emission was recorded, if it complies with the limit, the other emissions deemed to comply with the limit.

Test Mode	Channel	Polarization	Verdict
2DH5	MCH	Vertical	PASS

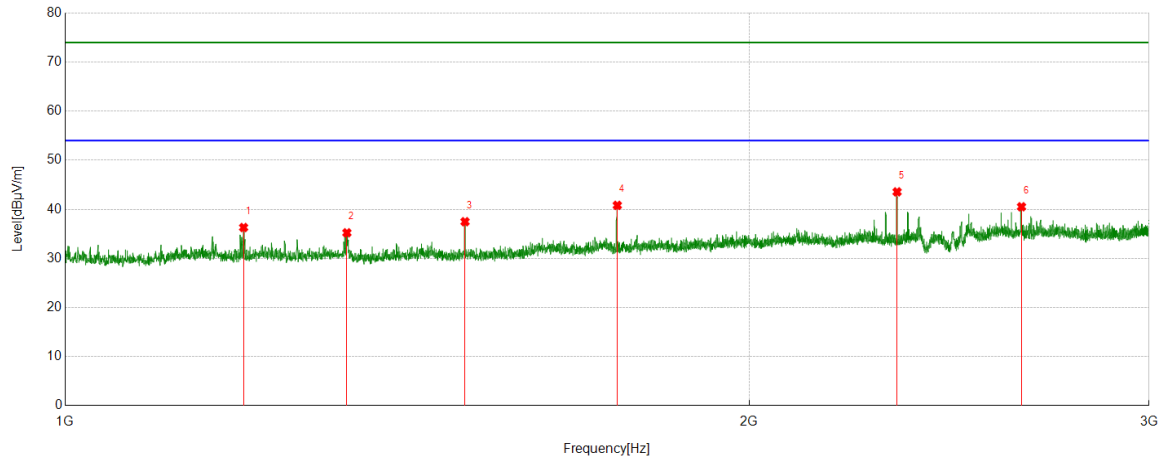


PK Result:

No.	Frequency	Reading Level	Correct Factor	Result	Limit	Margin	Remark
	[MHz]	[dBuV/m]	[dB]	[dBuV/m]	[dBuV/m]	[dB]	
1	1330.0413	61.43	-20.58	40.85	74.00	-33.15	Vertical
2	1500.3125	64.40	-19.71	44.69	74.00	-29.31	Vertical
3	1749.8437	67.94	-18.05	49.89	74.00	-24.11	Vertical
4	1991.624	58.82	-16.33	42.49	74.00	-31.51	Vertical
5	2596.9496	59.32	-13.28	46.04	74.00	-27.96	Vertical
6	2656.7071	60.11	-13.22	46.89	74.00	-27.11	Vertical

- Note: 1. Measurement = Reading Level + Correct Factor.
 2. If Peak Result complies with AV limit, AV Result is deemed to comply with AV limit.
 3. Test setup: RBW: 1 MHz, VBW: 3 MHz, Sweep time: auto.
 4. Peak: Peak detector.
 5. For below 3GHz part, filter losses were only considered in the spurious frequency bands and the authorized band was not corrected for Band Reject Filter losses.
 6. Only the worst case emission was recorded, if it complies with the limit, the other emissions deemed to comply with the limit.

Test Mode	Channel	Polarization	Verdict
2DH5	HCH	Horizontal	PASS

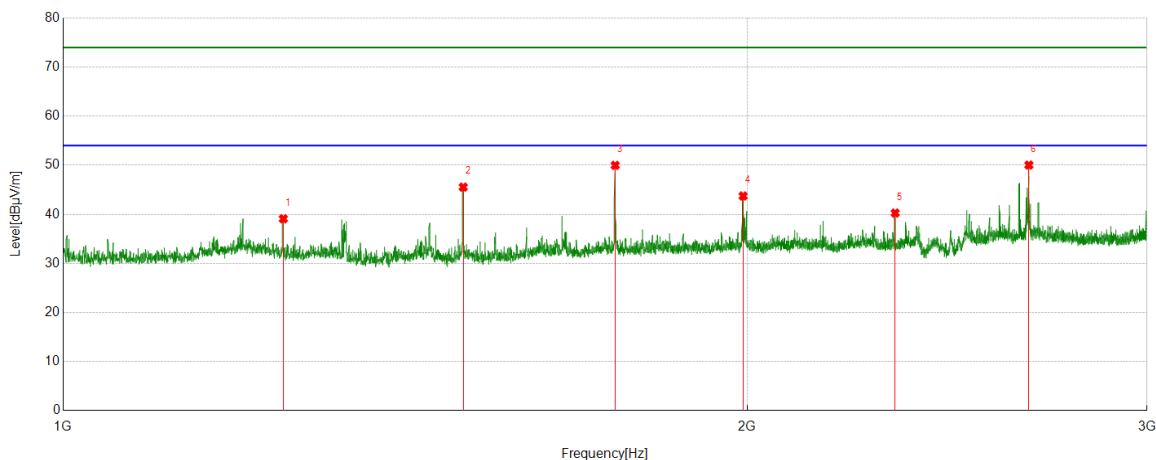


PK Result:

No.	Frequency	Reading Level	Correct Factor	Result	Limit	Margin	Remark
	[MHz]	[dBuV/m]	[dB]	[dBuV/m]	[dBuV/m]	[dB]	
1	1198.2748	58.27	-21.97	36.30	74.00	-37.70	Horizontal
2	1330.5413	55.80	-20.58	35.22	74.00	-38.78	Horizontal
3	1499.8125	57.20	-19.72	37.48	74.00	-36.52	Horizontal
4	1750.0938	58.86	-18.05	40.81	74.00	-33.19	Horizontal
5	2323.9155	58.66	-15.10	43.56	74.00	-30.44	Horizontal
6	2636.2045	53.90	-13.38	40.52	74.00	-33.48	Horizontal

- Note: 1. Measurement = Reading Level + Correct Factor.
 2. If Peak Result complies with AV limit, AV Result is deemed to comply with AV limit.
 3. Test setup: RBW: 1 MHz, VBW: 3 MHz, Sweep time: auto.
 4. Peak: Peak detector.
 5. For below 3GHz part, filter losses were only considered in the spurious frequency bands and the authorized band was not corrected for Band Reject Filter losses.
 6. Only the worst case emission was recorded, if it complies with the limit, the other emissions deemed to comply with the limit.

Test Mode	Channel	Polarization	Verdict
2DH5	HCH	Vertical	PASS

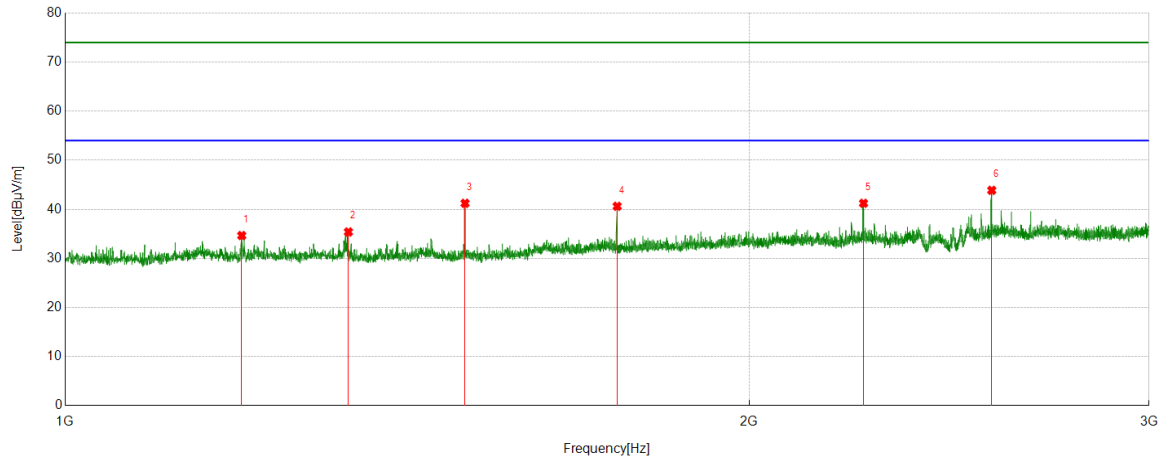


PK Result:

No.	Frequency	Reading Level	Correct Factor	Result	Limit	Margin	Remark
	[MHz]	[dBuV/m]	[dB]	[dBuV/m]	[dBuV/m]	[dB]	
1	1250.0313	59.96	-20.86	39.10	74.00	-34.90	Vertical
2	1500.0625	65.27	-19.72	45.55	74.00	-28.45	Vertical
3	1749.8437	68.03	-18.05	49.98	74.00	-24.02	Vertical
4	1992.124	60.08	-16.34	43.74	74.00	-30.26	Vertical
5	2324.1655	55.37	-15.10	40.27	74.00	-33.73	Vertical
6	2661.4577	63.27	-13.23	50.04	74.00	-23.96	Vertical

- Note: 1. Measurement = Reading Level + Correct Factor.
 2. If Peak Result complies with AV limit, AV Result is deemed to comply with AV limit.
 3. Test setup: RBW: 1 MHz, VBW: 3 MHz, Sweep time: auto.
 4. Peak: Peak detector.
 5. For below 3GHz part, filter losses were only considered in the spurious frequency bands and the authorized band was not corrected for Band Reject Filter losses.
 6. Only the worst case emission was recorded, if it complies with the limit, the other emissions deemed to comply with the limit.

Test Mode	Channel	Polarization	Verdict
3DH5	LCH	Horizontal	PASS

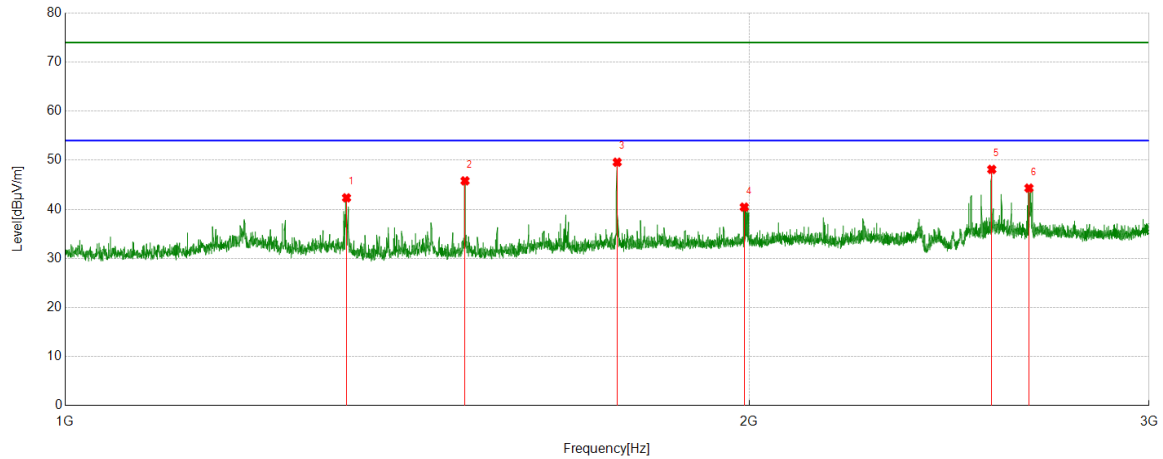


PK Result:

No.	Frequency	Reading Level	Correct Factor	Result	Limit	Margin	Remark
	[MHz]	[dBuV/m]	[dB]	[dBuV/m]	[dBuV/m]	[dB]	
1	1196.0245	56.61	-21.95	34.66	74.00	-39.34	Horizontal
2	1332.5416	55.98	-20.59	35.39	74.00	-38.61	Horizontal
3	1499.8125	60.95	-19.72	41.23	74.00	-32.77	Horizontal
4	1749.8437	58.67	-18.05	40.62	74.00	-33.38	Horizontal
5	2246.1558	56.22	-14.99	41.23	74.00	-32.77	Horizontal
6	2557.9447	57.65	-13.78	43.87	74.00	-30.13	Horizontal

- Note: 1. Measurement = Reading Level + Correct Factor.
 2. If Peak Result complies with AV limit, AV Result is deemed to comply with AV limit.
 3. Test setup: RBW: 1 MHz, VBW: 3 MHz, Sweep time: auto.
 4. Peak: Peak detector.
 5. For below 3GHz part, filter losses were only considered in the spurious frequency bands and the authorized band was not corrected for Band Reject Filter losses.
 6. Only the worst case emission was recorded, if it complies with the limit, the other emissions deemed to comply with the limit.

Test Mode	Channel	Polarization	Verdict
3DH5	LCH	Vertical	PASS

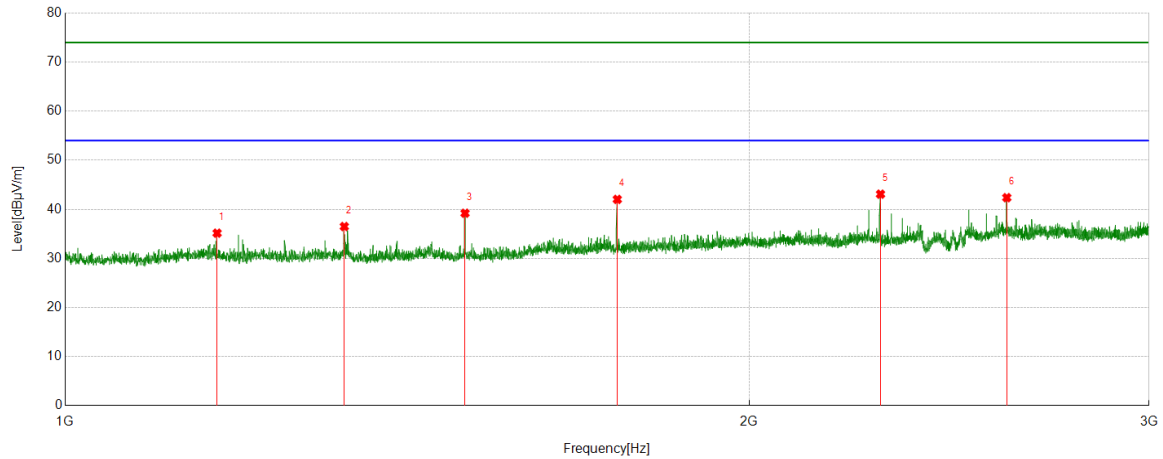


PK Result:

No.	Frequency	Reading Level	Correct Factor	Result	Limit	Margin	Remark
	[MHz]	[dBuV/m]	[dB]	[dBuV/m]	[dBuV/m]	[dB]	
1	1330.0413	62.92	-20.58	42.34	74.00	-31.66	Vertical
2	1499.8125	65.52	-19.72	45.80	74.00	-28.20	Vertical
3	1749.8437	67.65	-18.05	49.60	74.00	-24.40	Vertical
4	1990.3738	56.80	-16.35	40.45	74.00	-33.55	Vertical
5	2557.9447	61.91	-13.78	48.13	74.00	-25.87	Vertical
6	2656.207	57.54	-13.22	44.32	74.00	-29.68	Vertical

- Note: 1. Measurement = Reading Level + Correct Factor.
 2. If Peak Result complies with AV limit, AV Result is deemed to comply with AV limit.
 3. Test setup: RBW: 1 MHz, VBW: 3 MHz, Sweep time: auto.
 4. Peak: Peak detector.
 5. For below 3GHz part, filter losses were only considered in the spurious frequency bands and the authorized band was not corrected for Band Reject Filter losses.
 6. Only the worst case emission was recorded, if it complies with the limit, the other emissions deemed to comply with the limit.

Test Mode	Channel	Polarization	Verdict
3DH5	MCH	Horizontal	PASS

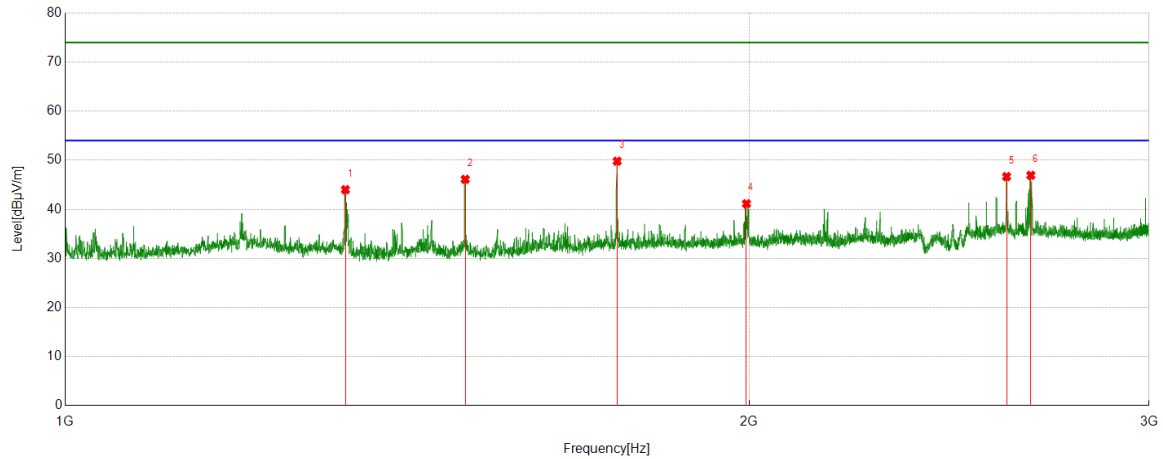


PK Result:

No.	Frequency	Reading Level	Correct Factor	Result	Limit	Margin	Remark
	[MHz]	[dBuV/m]	[dB]	[dBuV/m]	[dBuV/m]	[dB]	
1	1166.5208	56.62	-21.47	35.15	74.00	-38.85	Horizontal
2	1327.0409	57.12	-20.62	36.50	74.00	-37.50	Horizontal
3	1499.8125	58.93	-19.72	39.21	74.00	-34.79	Horizontal
4	1750.0938	60.08	-18.05	42.03	74.00	-31.97	Horizontal
5	2285.1606	58.30	-15.21	43.09	74.00	-30.91	Horizontal
6	2597.1996	55.65	-13.27	42.38	74.00	-31.62	Horizontal

- Note: 1. Measurement = Reading Level + Correct Factor.
 2. If Peak Result complies with AV limit, AV Result is deemed to comply with AV limit.
 3. Test setup: RBW: 1 MHz, VBW: 3 MHz, Sweep time: auto.
 4. Peak: Peak detector.
 5. For below 3GHz part, filter losses were only considered in the spurious frequency bands and the authorized band was not corrected for Band Reject Filter losses.
 6. Only the worst case emission was recorded, if it complies with the limit, the other emissions deemed to comply with the limit.

Test Mode	Channel	Polarization	Verdict
3DH5	MCH	Vertical	PASS

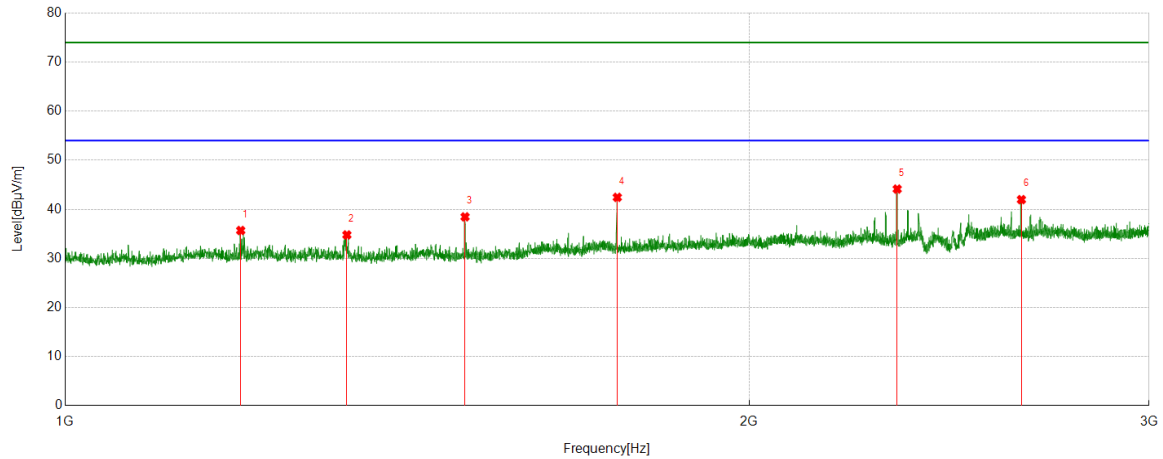


PK Result:

No.	Frequency	Reading Level	Correct Factor	Result	Limit	Margin	Remark
	[MHz]	[dBuV/m]	[dB]	[dBuV/m]	[dBuV/m]	[dB]	
1	1328.5411	64.59	-20.59	44.00	74.00	-30.00	Vertical
2	1500.0625	65.84	-19.72	46.12	74.00	-27.88	Vertical
3	1749.8437	67.85	-18.05	49.80	74.00	-24.20	Vertical
4	1994.8744	57.45	-16.31	41.14	74.00	-32.86	Vertical
5	2596.6996	59.95	-13.28	46.67	74.00	-27.33	Vertical
6	2661.2077	60.17	-13.24	46.93	74.00	-27.07	Vertical

- Note: 1. Measurement = Reading Level + Correct Factor.
 2. If Peak Result complies with AV limit, AV Result is deemed to comply with AV limit.
 3. Test setup: RBW: 1 MHz, VBW: 3 MHz, Sweep time: auto.
 4. Peak: Peak detector.
 5. For below 3GHz part, filter losses were only considered in the spurious frequency bands and the authorized band was not corrected for Band Reject Filter losses.
 6. Only the worst case emission was recorded, if it complies with the limit, the other emissions deemed to comply with the limit.

Test Mode	Channel	Polarization	Verdict
3DH5	HCH	Horizontal	PASS

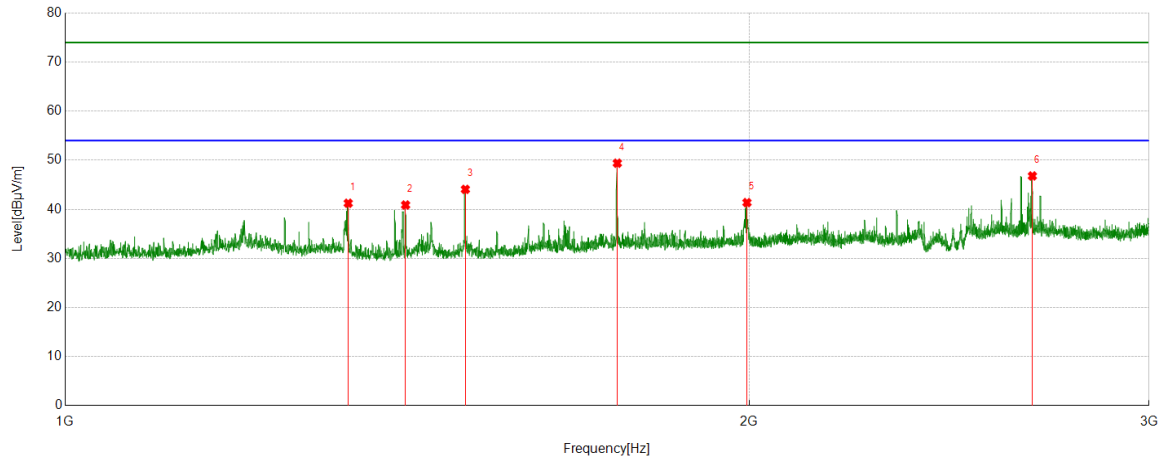


PK Result:

No.	Frequency	Reading Level	Correct Factor	Result	Limit	Margin	Remark
	[MHz]	[dBuV/m]	[dB]	[dBuV/m]	[dBuV/m]	[dB]	
1	1194.7743	57.62	-21.93	35.69	74.00	-38.31	Horizontal
2	1330.5413	55.37	-20.58	34.79	74.00	-39.21	Horizontal
3	1499.8125	58.19	-19.72	38.47	74.00	-35.53	Horizontal
4	1750.0938	60.49	-18.05	42.44	74.00	-31.56	Horizontal
5	2324.1655	59.23	-15.10	44.13	74.00	-29.87	Horizontal
6	2635.9545	55.35	-13.37	41.98	74.00	-32.02	Horizontal

- Note: 1. Measurement = Reading Level + Correct Factor.
 2. If Peak Result complies with AV limit, AV Result is deemed to comply with AV limit.
 3. Test setup: RBW: 1 MHz, VBW: 3 MHz, Sweep time: auto.
 4. Peak: Peak detector.
 5. For below 3GHz part, filter losses were only considered in the spurious frequency bands and the authorized band was not corrected for Band Reject Filter losses.
 6. Only the worst case emission was recorded, if it complies with the limit, the other emissions deemed to comply with the limit.

Test Mode	Channel	Polarization	Verdict
3DH5	HCH	Vertical	PASS



PK Result:

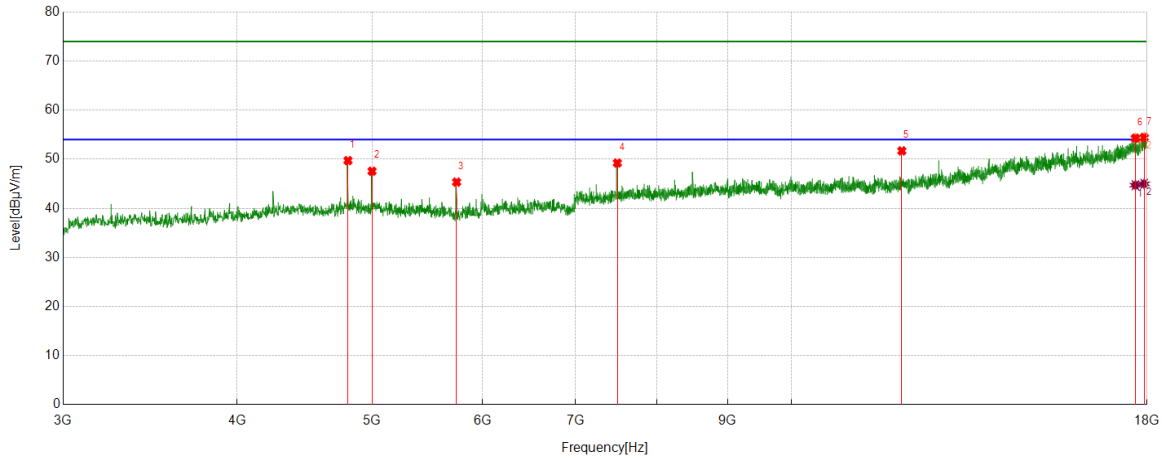
No.	Frequency	Reading Level	Correct Factor	Result	Limit	Margin	Remark
	[MHz]	[dBuV/m]	[dB]	[dBuV/m]	[dBuV/m]	[dB]	
1	1332.2915	61.83	-20.59	41.24	74.00	-32.76	Vertical
2	1412.0515	61.07	-20.19	40.88	74.00	-33.12	Vertical
3	1500.3125	63.78	-19.71	44.07	74.00	-29.93	Vertical
4	1750.0938	67.45	-18.05	49.40	74.00	-24.60	Vertical
5	1995.8745	57.68	-16.31	41.37	74.00	-32.63	Vertical
6	2665.4582	60.04	-13.24	46.80	74.00	-27.20	Vertical

- Note: 1. Measurement = Reading Level + Correct Factor.
 2. If Peak Result complies with AV limit, AV Result is deemed to comply with AV limit.
 3. Test setup: RBW: 1 MHz, VBW: 3 MHz, Sweep time: auto.
 4. Peak: Peak detector.
 5. For below 3GHz part, filter losses were only considered in the spurious frequency bands and the authorized band was not corrected for Band Reject Filter losses.
 6. Only the worst case emission was recorded, if it complies with the limit, the other emissions deemed to comply with the limit.

Part 2: 3GHz~18GHz

HARMONICS AND SPURIOUS EMISSIONS

Test Mode	Channel	Polarization	Verdict
DH5	LCH	Horizontal	PASS



PK Result:

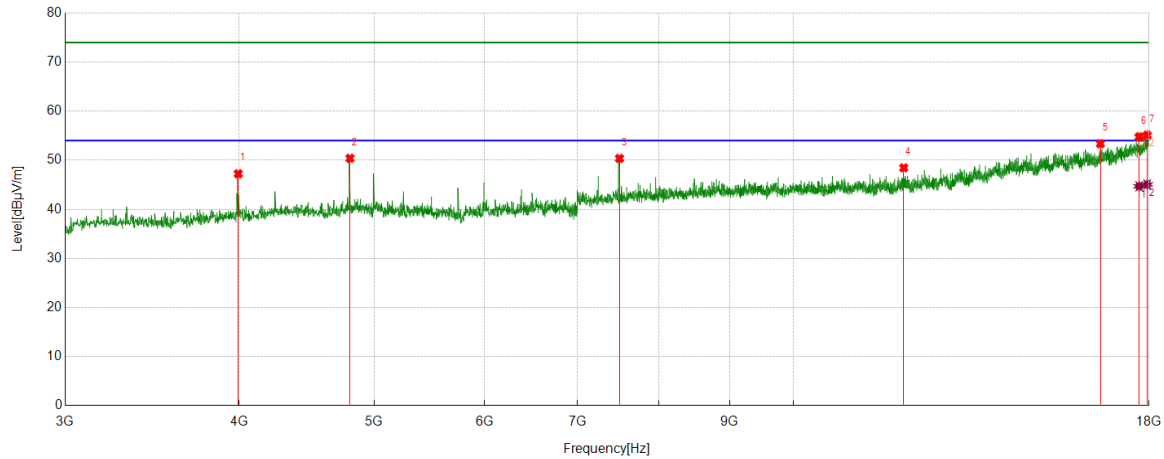
No.	Frequency	Reading Level	Correct Factor	Result	Limit	Margin	Remark
	[MHz]	[dBuV/m]	[dB]	[dBuV/m]	[dBuV/m]	[dB]	
1	4803.9755	53.61	-3.88	49.73	74.00	-24.27	Horizontal
2	4998.9999	51.29	-3.72	47.57	74.00	-26.43	Horizontal
3	5749.0936	48.70	-3.36	45.34	74.00	-28.66	Horizontal
4	7498.6873	48.88	0.35	49.23	74.00	-24.77	Horizontal
5	12001.1251	45.41	6.29	51.70	74.00	-22.30	Horizontal
6	17656.8321	36.54	17.76	54.30	74.00	-19.70	Horizontal
7	17915.6145	35.58	18.86	54.44	74.00	-19.56	Horizontal

AV Result:

No.	Frequency	Reading Level	Correct Factor	Result	Limit	Margin	Remark
	[MHz]	[dBuV/m]	[dB]	[dBuV/m]	[dBuV/m]	[dB]	
1	17656.8321	26.96	17.76	44.72	54.00	-9.28	Horizontal
2	17915.6145	26.13	18.86	44.99	54.00	-9.01	Horizontal

- Note: 1. Measurement = Reading Level + Correct Factor.
 2. If peak result complies with AV limit, AV Result is deemed to comply with AV limit.
 3. Peak result: Peak detector, RBW: 1 MHz, VBW: 3 MHz.
 4. Average result: Peak detector, RBW: 1 MHz, VBW: 1/T MHz(refer to clause 7.1.).
 5. For above 3GHz part, filter losses were only considered in the spurious frequency bands and the authorized band was not corrected for HPF losses.
 6. Only the worst case emission was recorded, if it complies with the limit, the other emissions deemed to comply with the limit.

Test Mode	Channel	Polarization	Verdict
DH5	LCH	Vertical	PASS



PK Result:

No.	Frequency	Reading Level	Correct Factor	Result	Limit	Margin	Remark
	[MHz]	[dBuV/m]	[dB]	[dBuV/m]	[dBuV/m]	[dB]	
1	3993.8742	54.27	-7.03	47.24	74.00	-26.76	Vertical
2	4803.9755	54.28	-3.88	50.40	74.00	-23.60	Vertical
3	7500.5626	50.04	0.33	50.37	74.00	-23.63	Vertical
4	11999.2499	42.15	6.30	48.45	74.00	-25.55	Vertical
5	16610.4513	38.61	14.76	53.37	74.00	-20.63	Vertical
6	17707.4634	36.93	17.83	54.76	74.00	-19.24	Vertical
7	17945.6182	36.63	18.48	55.11	74.00	-18.89	Vertical

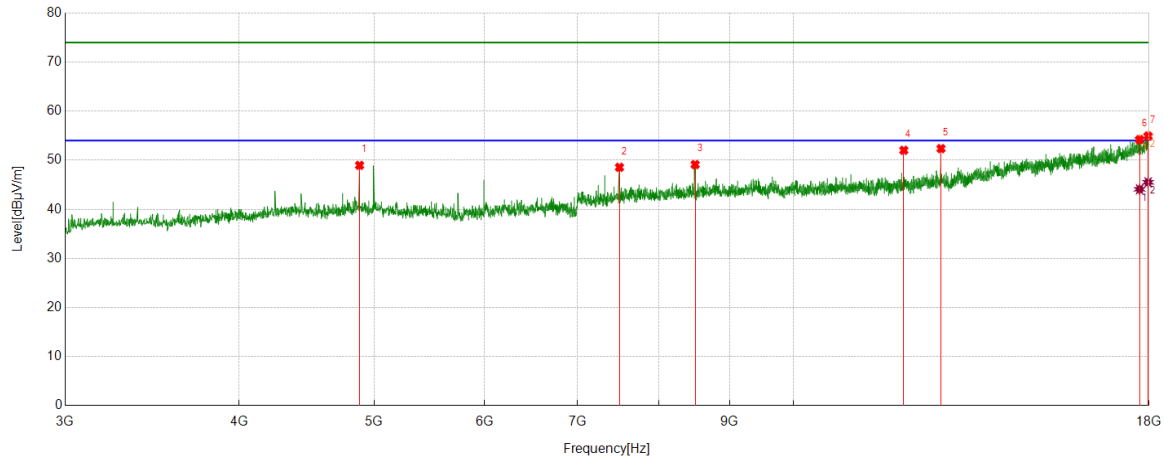
AV Result:

No.	Frequency	Reading Level	Correct Factor	Result	Limit	Margin	Remark
	[MHz]	[dBuV/m]	[dB]	[dBuV/m]	[dBuV/m]	[dB]	
1	17707.4634	26.86	17.83	44.69	54.00	-9.31	Vertical
2	17945.6182	26.59	18.48	45.07	54.00	-8.93	Vertical

Note: 1. Measurement = Reading Level + Correct Factor.

2. If peak result complies with AV limit, AV Result is deemed to comply with AV limit.
3. Peak result: Peak detector, RBW: 1 MHz, VBW: 3 MHz.
4. Average result: Peak detector, RBW: 1 MHz, VBW: 1/T MHz(refer to clause 7.1.).
5. For above 3GHz part, filter losses were only considered in the spurious frequency bands and the authorized band was not corrected for HPF losses.
6. Only the worst case emission was recorded, if it complies with the limit, the other emissions deemed to comply with the limit.

Test Mode	Channel	Polarization	Verdict
DH5	MCH	Horizontal	PASS



PK Result:

No.	Frequency	Reading Level	Correct Factor	Result	Limit	Margin	Remark
	[MHz]	[dBuV/m]	[dB]	[dBuV/m]	[dBuV/m]	[dB]	
1	4880.8601	52.44	-3.48	48.96	74.00	-25.04	Horizontal
2	7500.5626	48.23	0.33	48.56	74.00	-25.44	Horizontal
3	8500.0625	47.03	2.09	49.12	74.00	-24.88	Horizontal
4	12001.1251	45.73	6.29	52.02	74.00	-21.98	Horizontal
5	12762.4703	45.38	6.99	52.37	74.00	-21.63	Horizontal
6	17722.4653	36.72	17.48	54.20	74.00	-19.80	Horizontal
7	17971.8715	36.23	18.70	54.93	74.00	-19.07	Horizontal

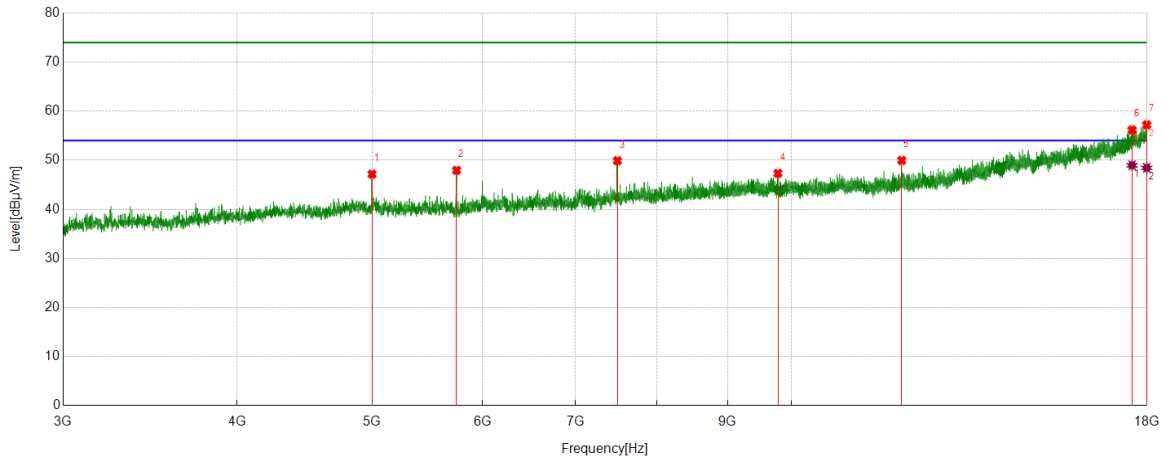
AV Result:

No.	Frequency	Reading Level	Correct Factor	Result	Limit	Margin	Remark
	[MHz]	[dBuV/m]	[dB]	[dBuV/m]	[dBuV/m]	[dB]	
1	17722.4653	26.60	17.48	44.08	54.00	-9.92	Horizontal
2	17971.8715	26.81	18.70	45.51	54.00	-8.49	Horizontal

Note: 1. Measurement = Reading Level + Correct Factor.

2. If peak result complies with AV limit, AV Result is deemed to comply with AV limit.
3. Peak result: Peak detector, RBW: 1 MHz, VBW: 3 MHz.
4. Average result: Peak detector, RBW: 1 MHz, VBW: 1/T MHz(refer to clause 7.1.).
5. For above 3GHz part, filter losses were only considered in the spurious frequency bands and the authorized band was not corrected for HPF losses.
6. Only the worst case emission was recorded, if it complies with the limit, the other emissions deemed to comply with the limit.

Test Mode	Channel	Polarization	Verdict
DH5	MCH	Vertical	PASS



PK Result:

No.	Frequency	Reading Level	Correct Factor	Result	Limit	Margin	Remark
	[MHz]	[dBuV/m]	[dB]	[dBuV/m]	[dBuV/m]	[dB]	
1	3986.3733	51.24	-6.98	44.26	74.00	-29.74	Vertical
2	4880.8601	54.22	-3.48	50.74	74.00	-23.26	Vertical
3	7322.4153	49.50	-0.03	49.47	74.00	-24.53	Vertical
4	12001.1251	42.67	6.29	48.96	74.00	-25.04	Vertical
5	14418.3023	39.32	11.54	50.86	74.00	-23.14	Vertical
6	17621.2026	36.41	17.60	54.01	74.00	-19.99	Vertical
7	17904.363	35.82	19.18	55.00	74.00	-19.00	Vertical

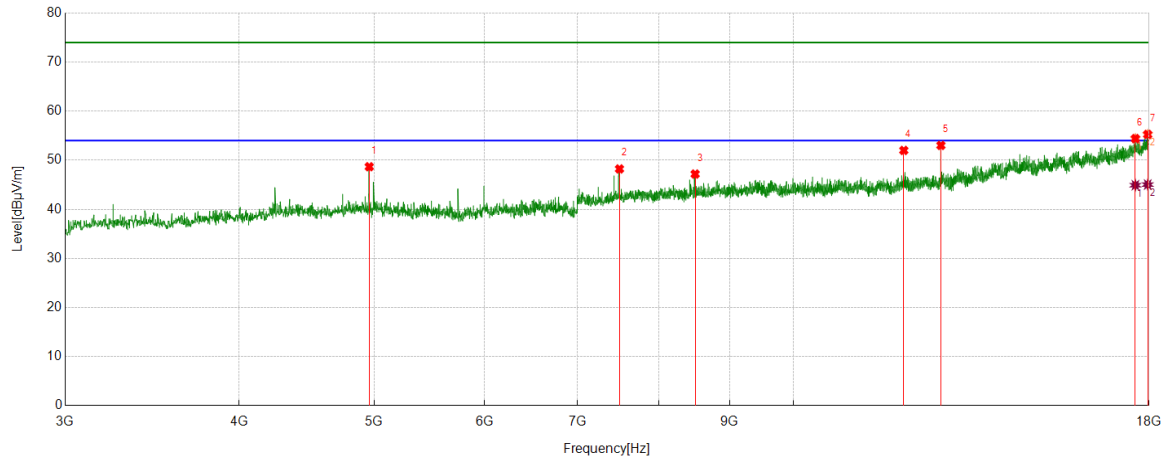
AV Result:

No.	Frequency	Reading Level	Correct Factor	Result	Limit	Margin	Remark
	[MHz]	[dBuV/m]	[dB]	[dBuV/m]	[dBuV/m]	[dB]	
1	17621.2026	26.72	17.60	44.32	54.00	-9.68	Vertical
2	17904.363	25.96	19.18	45.14	54.00	-8.86	Vertical

Note: 1. Measurement = Reading Level + Correct Factor.

2. If peak result complies with AV limit, AV Result is deemed to comply with AV limit.
3. Peak result: Peak detector, RBW: 1 MHz, VBW: 3 MHz.
4. Average result: Peak detector, RBW: 1 MHz, VBW: 1/T MHz(refer to clause 7.1.).
5. For above 3GHz part, filter losses were only considered in the spurious frequency bands and the authorized band was not corrected for HPF losses.
6. Only the worst case emission was recorded, if it complies with the limit, the other emissions deemed to comply with the limit.

Test Mode	Channel	Polarization	Verdict
DH5	HCH	Horizontal	PASS



PK Result:

No.	Frequency	Reading Level	Correct Factor	Result	Limit	Margin	Remark
	[MHz]	[dBuV/m]	[dB]	[dBuV/m]	[dBuV/m]	[dB]	
1	4959.62	52.86	-4.18	48.68	74.00	-25.32	Horizontal
2	7500.5626	47.90	0.33	48.23	74.00	-25.77	Horizontal
3	8500.0625	45.10	2.09	47.19	74.00	-26.81	Horizontal
4	12001.1251	45.71	6.29	52.00	74.00	-22.00	Horizontal
5	12760.5951	46.07	6.95	53.02	74.00	-20.98	Horizontal
6	17598.6998	36.83	17.58	54.41	74.00	-19.59	Horizontal
7	17960.6201	36.79	18.47	55.26	74.00	-18.74	Horizontal

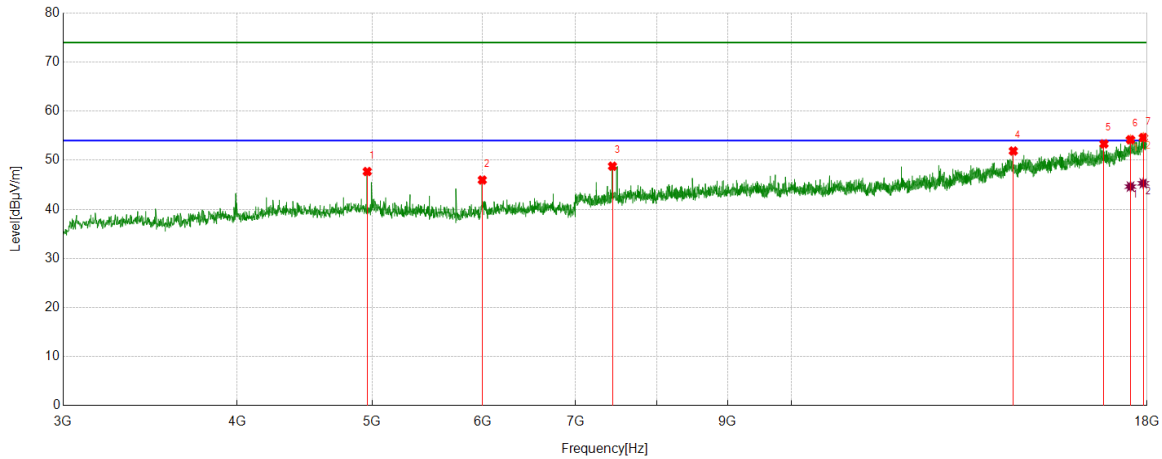
AV Result:

No.	Frequency	Reading Level	Correct Factor	Result	Limit	Margin	Remark
	[MHz]	[dBuV/m]	[dB]	[dBuV/m]	[dBuV/m]	[dB]	
1	17598.6998	27.34	17.58	44.92	54.00	-9.08	Horizontal
2	17960.6201	26.57	18.47	45.04	54.00	-8.96	Horizontal

Note: 1. Measurement = Reading Level + Correct Factor.

2. If peak result complies with AV limit, AV Result is deemed to comply with AV limit.
3. Peak result: Peak detector, RBW: 1 MHz, VBW: 3 MHz.
4. Average result: Peak detector, RBW: 1 MHz, VBW: 1/T MHz(refer to clause 7.1.).
5. For above 3GHz part, filter losses were only considered in the spurious frequency bands and the authorized band was not corrected for HPF losses.
6. Only the worst case emission was recorded, if it complies with the limit, the other emissions deemed to comply with the limit.

Test Mode	Channel	Polarization	Verdict
DH5	HCH	Vertical	PASS



PK Result:

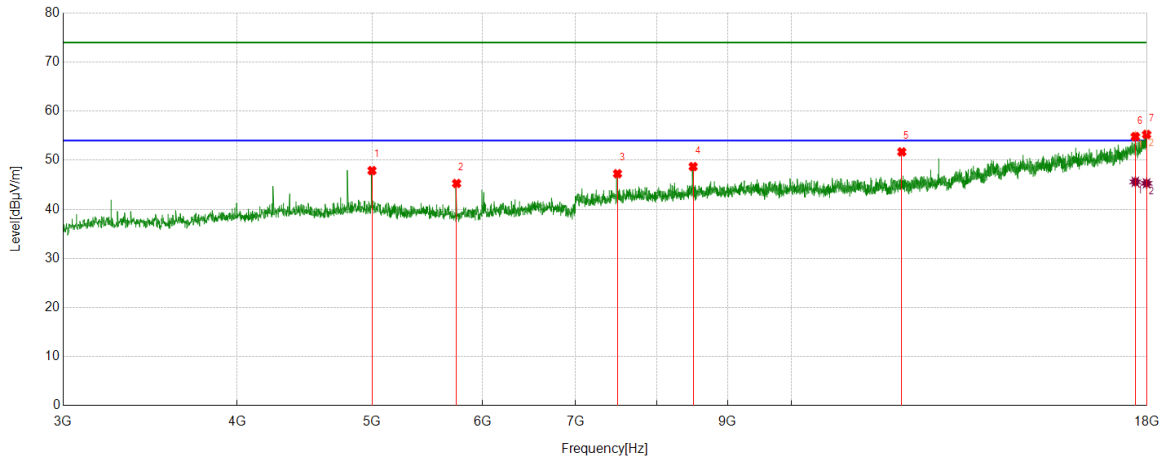
No.	Frequency	Reading Level	Correct Factor	Result	Limit	Margin	Remark
	[MHz]	[dBuV/m]	[dB]	[dBuV/m]	[dBuV/m]	[dB]	
1	4959.62	51.88	-4.18	47.70	74.00	-26.30	Vertical
2	5998.4998	48.44	-2.47	45.97	74.00	-28.03	Vertical
3	7438.6798	47.76	1.02	48.78	74.00	-25.22	Vertical
4	14429.5537	40.13	11.75	51.88	74.00	-22.12	Vertical
5	16764.2205	38.25	15.08	53.33	74.00	-20.67	Vertical
6	17514.3143	36.99	17.19	54.18	74.00	-19.82	Vertical
7	17889.3612	35.39	19.24	54.63	74.00	-19.37	Vertical

AV Result:

No.	Frequency	Reading Level	Correct Factor	Result	Limit	Margin	Remark
	[MHz]	[dBuV/m]	[dB]	[dBuV/m]	[dBuV/m]	[dB]	
1	17514.3143	27.44	17.19	44.63	54.00	-9.37	Vertical
2	17889.3612	26.06	19.24	45.30	54.00	-8.70	Vertical

- Note: 1. Measurement = Reading Level + Correct Factor.
 2. If peak result complies with AV limit, AV Result is deemed to comply with AV limit.
 3. Peak result: Peak detector, RBW: 1 MHz, VBW: 3 MHz.
 4. Average result: Peak detector, RBW: 1 MHz, VBW: 1/T MHz(refer to clause 7.1.).
 5. For above 3GHz part, filter losses were only considered in the spurious frequency bands and the authorized band was not corrected for HPF losses.
 6. Only the worst case emission was recorded, if it complies with the limit, the other emissions deemed to comply with the limit.

Test Mode	Channel	Polarization	Verdict
2DH5	LCH	Horizontal	PASS



PK Result:

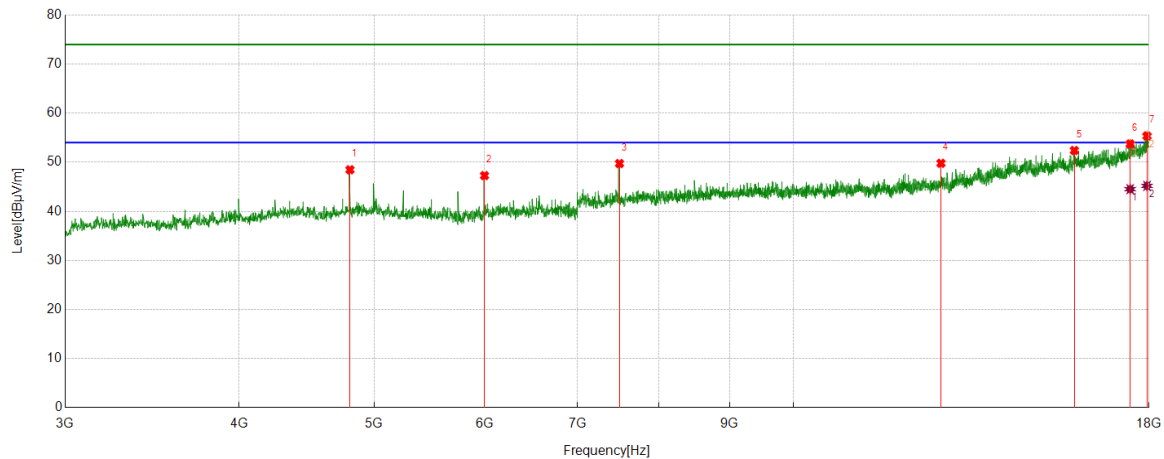
No.	Frequency	Reading Level	Correct Factor	Result	Limit	Margin	Remark
	[MHz]	[dBuV/m]	[dB]	[dBuV/m]	[dBuV/m]	[dB]	
1	4998.9999	51.61	-3.72	47.89	74.00	-26.11	Horizontal
2	5749.0936	48.63	-3.36	45.27	74.00	-28.73	Horizontal
3	7500.5626	46.93	0.33	47.26	74.00	-26.74	Horizontal
4	8500.0625	46.61	2.09	48.70	74.00	-25.30	Horizontal
5	12001.1251	45.41	6.29	51.70	74.00	-22.30	Horizontal
6	17654.9569	37.07	17.74	54.81	74.00	-19.19	Horizontal
7	17986.8734	36.65	18.60	55.25	74.00	-18.75	Horizontal

AV Result:

No.	Frequency	Reading Level	Correct Factor	Result	Limit	Margin	Remark
	[MHz]	[dBuV/m]	[dB]	[dBuV/m]	[dBuV/m]	[dB]	
1	17654.9569	27.86	17.74	45.60	54.00	-8.40	Horizontal
2	17986.8734	26.70	18.60	45.30	54.00	-8.70	Horizontal

- Note: 1. Measurement = Reading Level + Correct Factor.
 2. If peak result complies with AV limit, AV Result is deemed to comply with AV limit.
 3. Peak result: Peak detector, RBW: 1 MHz, VBW: 3 MHz.
 4. Average result: Peak detector, RBW: 1 MHz, VBW: 1/T MHz(refer to clause 7.1.).
 5. For above 3GHz part, filter losses were only considered in the spurious frequency bands and the authorized band was not corrected for HPF losses.
 6. Only the worst case emission was recorded, if it complies with the limit, the other emissions deemed to comply with the limit.

Test Mode	Channel	Polarization	Verdict
2DH5	LCH	Vertical	PASS



PK Result:

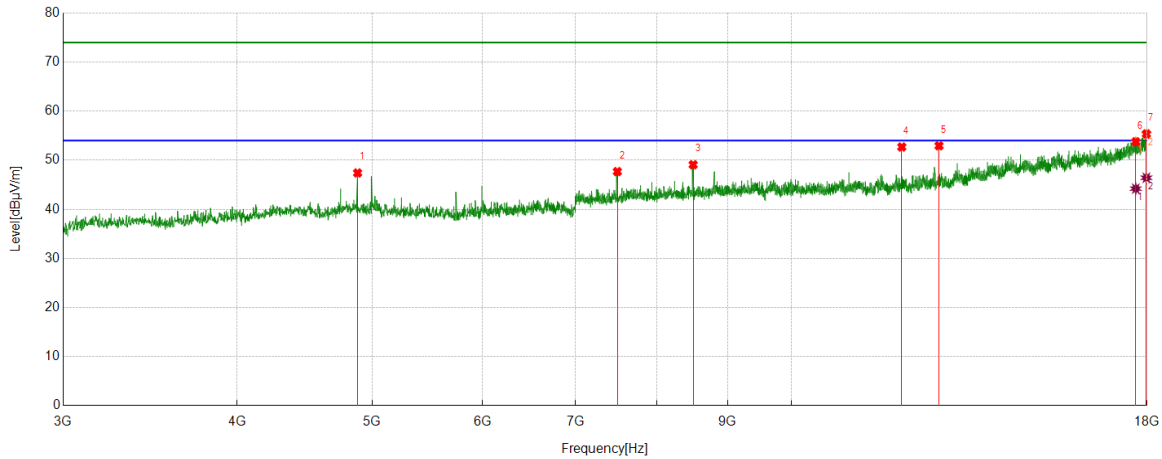
No.	Frequency	Reading Level	Correct Factor	Result	Limit	Margin	Remark
	[MHz]	[dBuV/m]	[dB]	[dBuV/m]	[dBuV/m]	[dB]	
1	4803.9755	52.35	-3.88	48.47	74.00	-25.53	Vertical
2	6000.375	49.76	-2.48	47.28	74.00	-26.72	Vertical
3	7500.5626	49.41	0.33	49.74	74.00	-24.26	Vertical
4	12762.4703	42.80	6.99	49.79	74.00	-24.21	Vertical
5	15909.1136	38.65	13.75	52.40	74.00	-21.60	Vertical
6	17446.8059	36.63	17.09	53.72	74.00	-20.28	Vertical
7	17939.9925	36.73	18.63	55.36	74.00	-18.64	Vertical

AV Result:

No.	Frequency	Reading Level	Correct Factor	Result	Limit	Margin	Remark
	[MHz]	[dBuV/m]	[dB]	[dBuV/m]	[dBuV/m]	[dB]	
1	17446.8059	27.43	17.09	44.52	54.00	-9.48	Vertical
2	17939.9925	26.56	18.63	45.19	54.00	-8.81	Vertical

- Note: 1. Measurement = Reading Level + Correct Factor.
 2. If peak result complies with AV limit, AV Result is deemed to comply with AV limit.
 3. Peak result: Peak detector, RBW: 1 MHz, VBW: 3 MHz.
 4. Average result: Peak detector, RBW: 1 MHz, VBW: 1/T MHz(refer to clause 7.1.).
 5. For above 3GHz part, filter losses were only considered in the spurious frequency bands and the authorized band was not corrected for HPF losses.
 6. Only the worst case emission was recorded, if it complies with the limit, the other emissions deemed to comply with the limit.

Test Mode	Channel	Polarization	Verdict
2DH5	MCH	Horizontal	PASS



PK Result:

No.	Frequency	Reading Level	Correct Factor	Result	Limit	Margin	Remark
	[MHz]	[dBuV/m]	[dB]	[dBuV/m]	[dBuV/m]	[dB]	
1	4880.8601	50.89	-3.48	47.41	74.00	-26.59	Horizontal
2	7498.6873	47.34	0.35	47.69	74.00	-26.31	Horizontal
3	8500.0625	47.00	2.09	49.09	74.00	-24.91	Horizontal
4	12001.1251	46.41	6.29	52.70	74.00	-21.30	Horizontal
5	12762.4703	45.95	6.99	52.94	74.00	-21.06	Horizontal
6	17668.0835	36.25	17.51	53.76	74.00	-20.24	Horizontal
7	17981.2477	36.71	18.65	55.36	74.00	-18.64	Horizontal

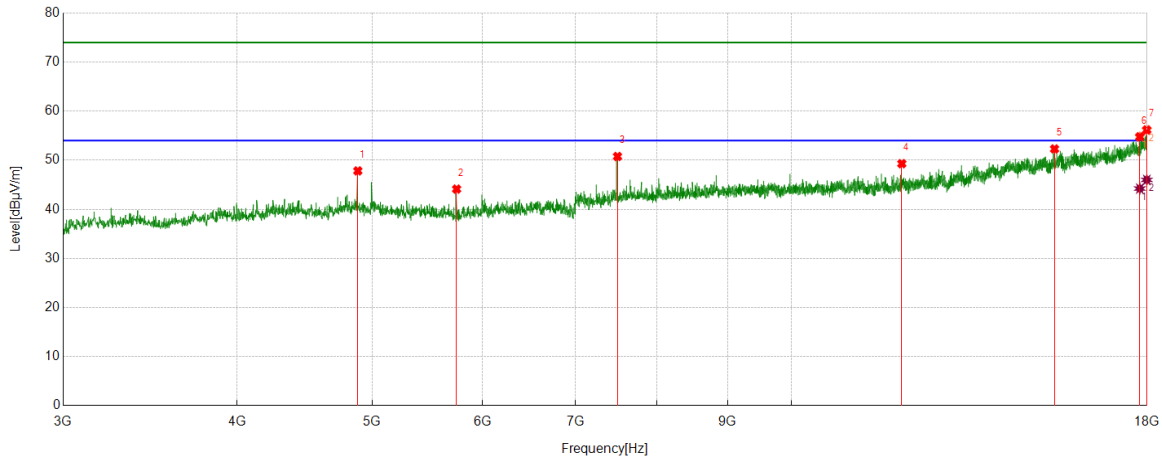
AV Result:

No.	Frequency	Reading Level	Correct Factor	Result	Limit	Margin	Remark
	[MHz]	[dBuV/m]	[dB]	[dBuV/m]	[dBuV/m]	[dB]	
1	17668.0835	26.70	17.51	44.21	54.00	-9.79	Horizontal
2	17981.2477	27.78	18.65	46.43	54.00	-7.57	Horizontal

Note: 1. Measurement = Reading Level + Correct Factor.

2. If peak result complies with AV limit, AV Result is deemed to comply with AV limit.
3. Peak result: Peak detector, RBW: 1 MHz, VBW: 3 MHz.
4. Average result: Peak detector, RBW: 1 MHz, VBW: 1/T MHz(refer to clause 7.1.).
5. For above 3GHz part, filter losses were only considered in the spurious frequency bands and the authorized band was not corrected for HPF losses.
6. Only the worst case emission was recorded, if it complies with the limit, the other emissions deemed to comply with the limit.

Test Mode	Channel	Polarization	Verdict
2DH5	MCH	Vertical	PASS



PK Result:

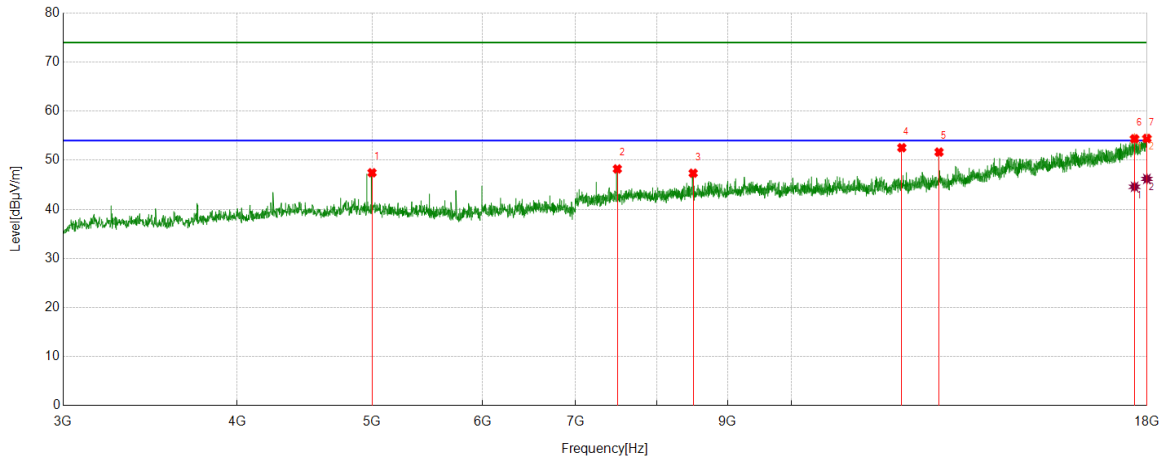
No.	Frequency	Reading Level	Correct Factor	Result	Limit	Margin	Remark
	[MHz]	[dBuV/m]	[dB]	[dBuV/m]	[dBuV/m]	[dB]	
1	4882.7353	51.32	-3.49	47.83	74.00	-26.17	Vertical
2	5749.0936	47.48	-3.36	44.12	74.00	-29.88	Vertical
3	7500.5626	50.44	0.33	50.77	74.00	-23.23	Vertical
4	12001.1251	43.01	6.29	49.30	74.00	-24.70	Vertical
5	15447.806	39.36	12.94	52.30	74.00	-21.70	Vertical
6	17786.2233	36.75	18.03	54.78	74.00	-19.22	Vertical
7	17992.4991	37.55	18.63	56.18	74.00	-17.82	Vertical

AV Result:

No.	Frequency	Reading Level	Correct Factor	Result	Limit	Margin	Remark
	[MHz]	[dBuV/m]	[dB]	[dBuV/m]	[dBuV/m]	[dB]	
1	17786.2233	26.20	18.03	44.23	54.00	-9.77	Vertical
2	17992.4991	27.37	18.63	46.00	54.00	-8.00	Vertical

- Note: 1. Measurement = Reading Level + Correct Factor.
 2. If peak result complies with AV limit, AV Result is deemed to comply with AV limit.
 3. Peak result: Peak detector, RBW: 1 MHz, VBW: 3 MHz.
 4. Average result: Peak detector, RBW: 1 MHz, VBW: 1/T MHz(refer to clause 7.1.).
 5. For above 3GHz part, filter losses were only considered in the spurious frequency bands and the authorized band was not corrected for HPF losses.
 6. Only the worst case emission was recorded, if it complies with the limit, the other emissions deemed to comply with the limit.

Test Mode	Channel	Polarization	Verdict
2DH5	HCH	Horizontal	PASS



PK Result:

No.	Frequency	Reading Level	Correct Factor	Result	Limit	Margin	Remark
	[MHz]	[dBuV/m]	[dB]	[dBuV/m]	[dBuV/m]	[dB]	
1	4998.9999	51.17	-3.72	47.45	74.00	-26.55	Horizontal
2	7498.6873	47.88	0.35	48.23	74.00	-25.77	Horizontal
3	8500.0625	45.27	2.09	47.36	74.00	-26.64	Horizontal
4	12001.1251	46.26	6.29	52.55	74.00	-21.45	Horizontal
5	12762.4703	44.67	6.99	51.66	74.00	-22.34	Horizontal
6	17632.4541	36.99	17.38	54.37	74.00	-19.63	Horizontal
7	17996.2495	35.75	18.69	54.44	74.00	-19.56	Horizontal

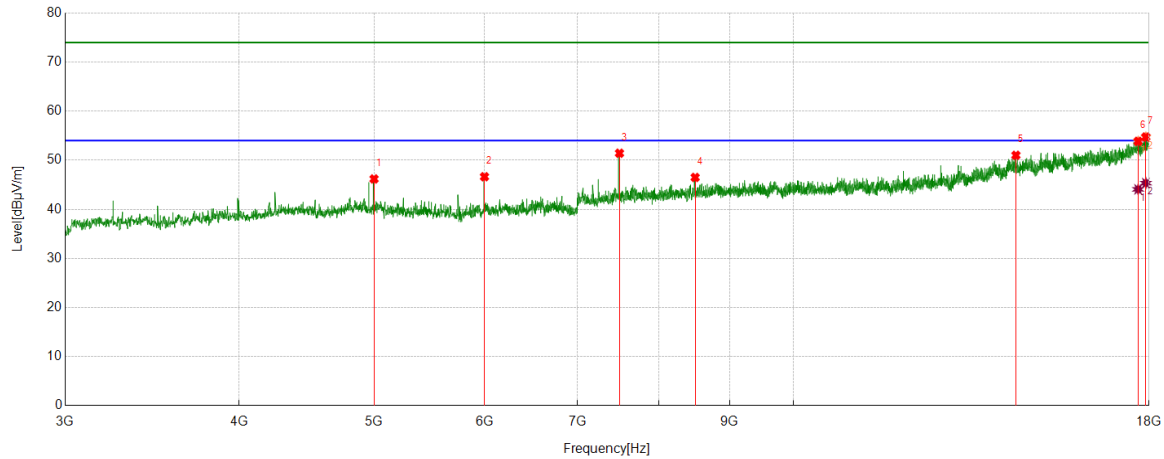
AV Result:

No.	Frequency	Reading Level	Correct Factor	Result	Limit	Margin	Remark
	[MHz]	[dBuV/m]	[dB]	[dBuV/m]	[dBuV/m]	[dB]	
1	17632.4541	27.21	17.38	44.59	54.00	-9.41	Horizontal
2	17996.2495	27.51	18.69	46.20	54.00	-7.80	Horizontal

Note: 1. Measurement = Reading Level + Correct Factor.

2. If peak result complies with AV limit, AV Result is deemed to comply with AV limit.
3. Peak result: Peak detector, RBW: 1 MHz, VBW: 3 MHz.
4. Average result: Peak detector, RBW: 1 MHz, VBW: 1/T MHz(refer to clause 7.1.).
5. For above 3GHz part, filter losses were only considered in the spurious frequency bands and the authorized band was not corrected for HPF losses.
6. Only the worst case emission was recorded, if it complies with the limit, the other emissions deemed to comply with the limit.

Test Mode	Channel	Polarization	Verdict
2DH5	HCH	Vertical	PASS



PK Result:

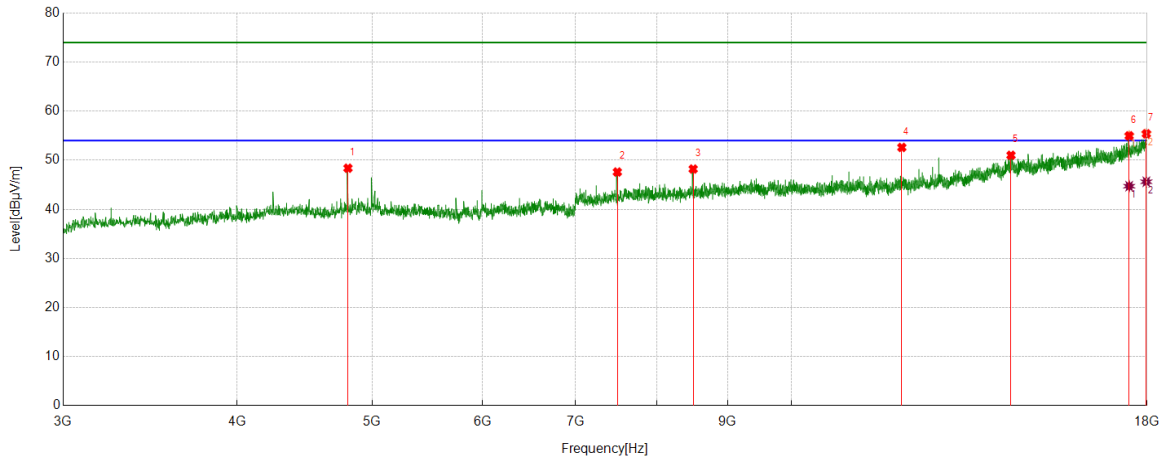
No.	Frequency	Reading Level	Correct Factor	Result	Limit	Margin	Remark
	[MHz]	[dBuV/m]	[dB]	[dBuV/m]	[dBuV/m]	[dB]	
1	4998.9999	49.91	-3.72	46.19	74.00	-27.81	Vertical
2	6000.375	49.12	-2.48	46.64	74.00	-27.36	Vertical
3	7500.5626	51.10	0.33	51.43	74.00	-22.57	Vertical
4	8500.0625	44.41	2.09	46.50	74.00	-27.50	Vertical
5	14444.5556	39.35	11.66	51.01	74.00	-22.99	Vertical
6	17677.4597	36.50	17.35	53.85	74.00	-20.15	Vertical
7	17906.2383	35.60	19.14	54.74	74.00	-19.26	Vertical

AV Result:

No.	Frequency	Reading Level	Correct Factor	Result	Limit	Margin	Remark
	[MHz]	[dBuV/m]	[dB]	[dBuV/m]	[dBuV/m]	[dB]	
1	17677.4597	26.72	17.35	44.07	54.00	-9.93	Vertical
2	17906.2383	26.20	19.14	45.34	54.00	-8.66	Vertical

- Note: 1. Measurement = Reading Level + Correct Factor.
 2. If peak result complies with AV limit, AV Result is deemed to comply with AV limit.
 3. Peak result: Peak detector, RBW: 1 MHz, VBW: 3 MHz.
 4. Average result: Peak detector, RBW: 1 MHz, VBW: 1/T MHz(refer to clause 7.1.).
 5. For above 3GHz part, filter losses were only considered in the spurious frequency bands and the authorized band was not corrected for HPF losses.
 6. Only the worst case emission was recorded, if it complies with the limit, the other emissions deemed to comply with the limit.

Test Mode	Channel	Polarization	Verdict
3DH5	LCH	Horizontal	PASS



PK Result:

No.	Frequency	Reading Level	Correct Factor	Result	Limit	Margin	Remark
	[MHz]	[dBuV/m]	[dB]	[dBuV/m]	[dBuV/m]	[dB]	
1	4803.9755	52.26	-3.88	48.38	74.00	-25.62	Horizontal
2	7498.6873	47.25	0.35	47.60	74.00	-26.40	Horizontal
3	8500.0625	46.12	2.09	48.21	74.00	-25.79	Horizontal
4	12001.1251	46.32	6.29	52.61	74.00	-21.39	Horizontal
5	14375.1719	39.97	11.04	51.01	74.00	-22.99	Horizontal
6	17476.8096	37.71	17.27	54.98	74.00	-19.02	Horizontal
7	17979.3724	36.73	18.66	55.39	74.00	-18.61	Horizontal

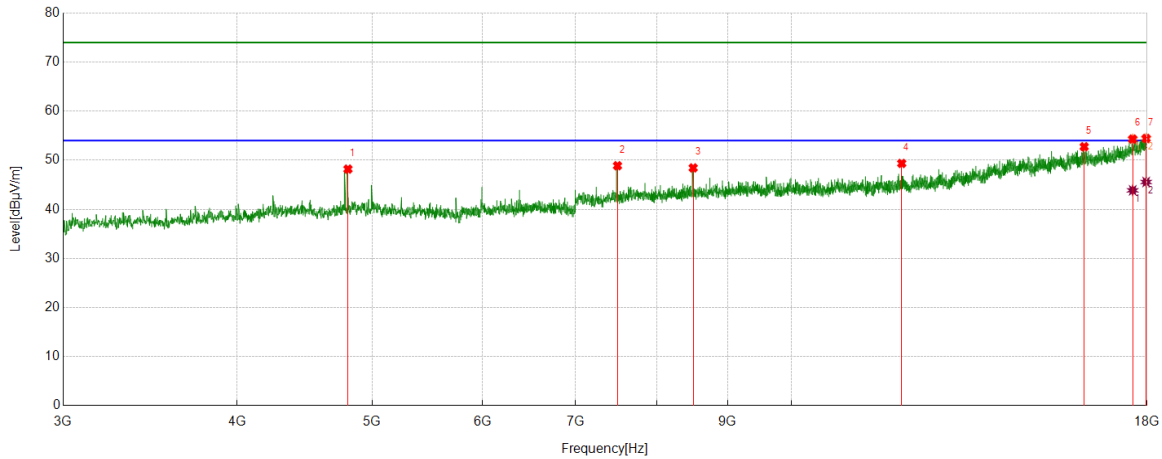
AV Result:

No.	Frequency	Reading Level	Correct Factor	Result	Limit	Margin	Remark
	[MHz]	[dBuV/m]	[dB]	[dBuV/m]	[dBuV/m]	[dB]	
1	17476.8096	27.45	17.27	44.72	54.00	-9.28	Horizontal
2	17979.3724	26.96	18.66	45.62	54.00	-8.38	Horizontal

Note: 1. Measurement = Reading Level + Correct Factor.

2. If peak result complies with AV limit, AV Result is deemed to comply with AV limit.
3. Peak result: Peak detector, RBW: 1 MHz, VBW: 3 MHz.
4. Average result: Peak detector, RBW: 1 MHz, VBW: 1/T MHz(refer to clause 7.1.).
5. For above 3GHz part, filter losses were only considered in the spurious frequency bands and the authorized band was not corrected for HPF losses.
6. Only the worst case emission was recorded, if it complies with the limit, the other emissions deemed to comply with the limit.

Test Mode	Channel	Polarization	Verdict
3DH5	LCH	Vertical	PASS



PK Result:

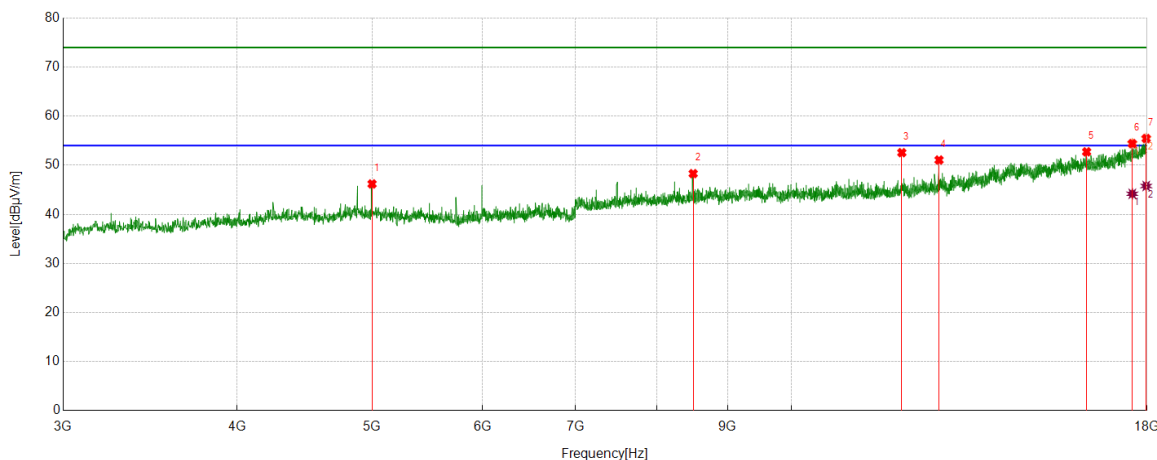
No.	Frequency	Reading Level	Correct Factor	Result	Limit	Margin	Remark
	[MHz]	[dBuV/m]	[dB]	[dBuV/m]	[dBuV/m]	[dB]	
1	4803.9755	52.08	-3.88	48.20	74.00	-25.80	Vertical
2	7500.5626	48.55	0.33	48.88	74.00	-25.12	Vertical
3	8500.0625	46.35	2.09	48.44	74.00	-25.56	Vertical
4	11999.2499	43.05	6.30	49.35	74.00	-24.65	Vertical
5	16224.153	38.53	14.22	52.75	74.00	-21.25	Vertical
6	17578.0723	36.99	17.32	54.31	74.00	-19.69	Vertical
7	17973.7467	35.76	18.68	54.44	74.00	-19.56	Vertical

AV Result:

No.	Frequency	Reading Level	Correct Factor	Result	Limit	Margin	Remark
	[MHz]	[dBuV/m]	[dB]	[dBuV/m]	[dBuV/m]	[dB]	
1	17578.0723	26.55	17.32	43.87	54.00	-10.13	Vertical
2	17973.7467	26.89	18.68	45.57	54.00	-8.43	Vertical

- Note: 1. Measurement = Reading Level + Correct Factor.
 2. If peak result complies with AV limit, AV Result is deemed to comply with AV limit.
 3. Peak result: Peak detector, RBW: 1 MHz, VBW: 3 MHz.
 4. Average result: Peak detector, RBW: 1 MHz, VBW: 1/T MHz(refer to clause 7.1.).
 5. For above 3GHz part, filter losses were only considered in the spurious frequency bands and the authorized band was not corrected for HPF losses.
 6. Only the worst case emission was recorded, if it complies with the limit, the other emissions deemed to comply with the limit.

Test Mode	Channel	Polarization	Verdict
3DH5	MCH	Horizontal	PASS



PK Result:

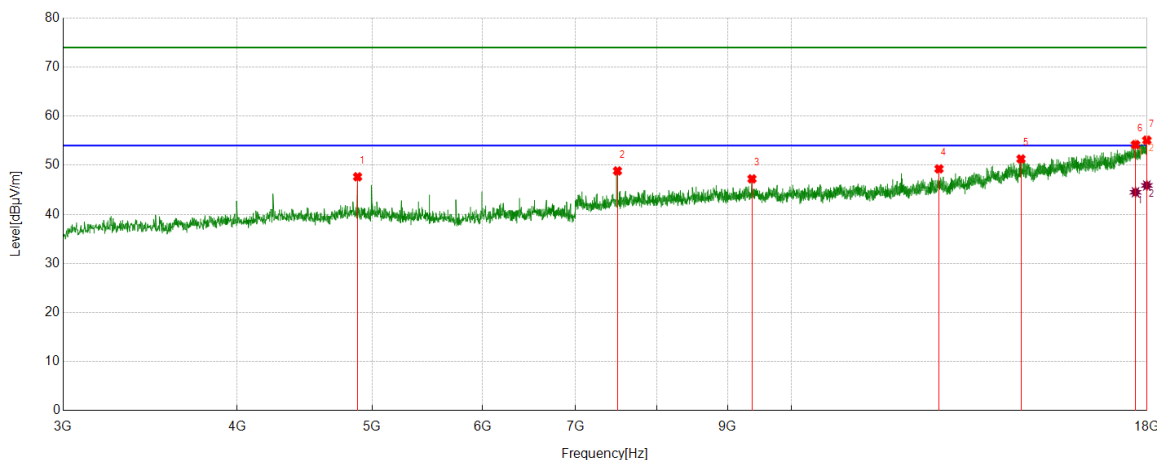
No.	Frequency	Reading Level	Correct Factor	Result	Limit	Margin	Remark
	[MHz]	[dBuV/m]	[dB]	[dBuV/m]	[dBuV/m]	[dB]	
1	4998.9999	49.91	-3.72	46.19	74.00	-27.81	Horizontal
2	8500.0625	46.20	2.09	48.29	74.00	-25.71	Horizontal
3	12001.1251	46.27	6.29	52.56	74.00	-21.44	Horizontal
4	12762.4703	44.08	6.99	51.07	74.00	-22.93	Horizontal
5	16289.7862	38.71	14.02	52.73	74.00	-21.27	Horizontal
6	17566.8209	37.17	17.24	54.41	74.00	-19.59	Horizontal
7	17975.622	36.77	18.68	55.45	74.00	-18.55	Horizontal

AV Result:

No.	Frequency	Reading Level	Correct Factor	Result	Limit	Margin	Remark
	[MHz]	[dBuV/m]	[dB]	[dBuV/m]	[dBuV/m]	[dB]	
1	17566.8209	26.94	17.24	44.18	54.00	-9.82	Horizontal
2	17975.622	27.09	18.68	45.77	54.00	-8.23	Horizontal

- Note: 1. Measurement = Reading Level + Correct Factor.
 2. If peak result complies with AV limit, AV Result is deemed to comply with AV limit.
 3. Peak result: Peak detector, RBW: 1 MHz, VBW: 3 MHz.
 4. Average result: Peak detector, RBW: 1 MHz, VBW: 1/T MHz(refer to clause 7.1.).
 5. For above 3GHz part, filter losses were only considered in the spurious frequency bands and the authorized band was not corrected for HPF losses.
 6. Only the worst case emission was recorded, if it complies with the limit, the other emissions deemed to comply with the limit.

Test Mode	Channel	Polarization	Verdict
3DH5	MCH	Vertical	PASS



PK Result:

No.	Frequency	Reading Level	Correct Factor	Result	Limit	Margin	Remark
	[MHz]	[dBuV/m]	[dB]	[dBuV/m]	[dBuV/m]	[dB]	
1	4880.8601	51.12	-3.48	47.64	74.00	-26.36	Vertical
2	7500.5626	48.51	0.33	48.84	74.00	-25.16	Vertical
3	9368.296	44.13	3.09	47.22	74.00	-26.78	Vertical
4	12762.4703	42.27	6.99	49.26	74.00	-24.74	Vertical
5	14615.2019	39.32	11.96	51.28	74.00	-22.72	Vertical
6	17660.5826	36.45	17.75	54.20	74.00	-19.80	Vertical
7	17994.3743	36.44	18.66	55.10	74.00	-18.90	Vertical

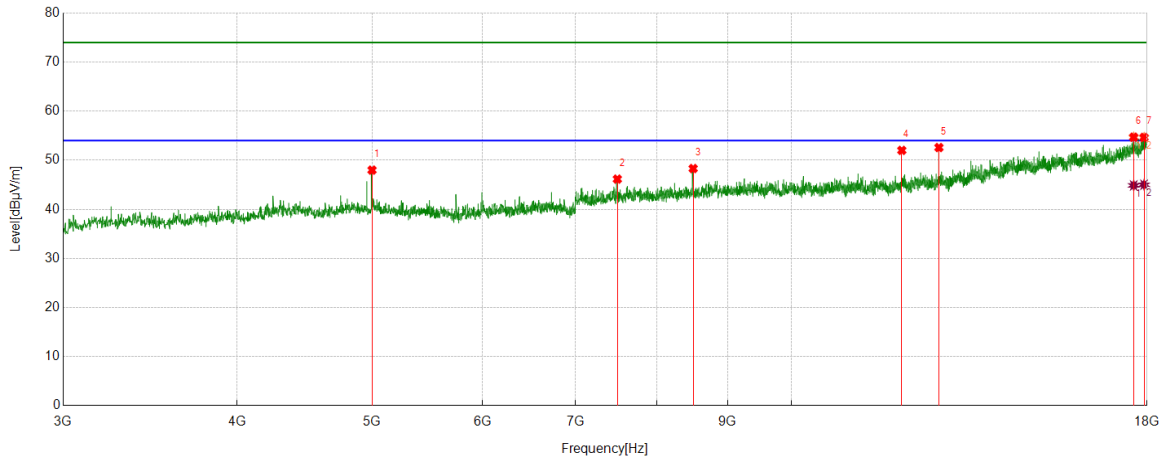
AV Result:

No.	Frequency	Reading Level	Correct Factor	Result	Limit	Margin	Remark
	[MHz]	[dBuV/m]	[dB]	[dBuV/m]	[dBuV/m]	[dB]	
1	17660.5826	26.75	17.75	44.50	54.00	-9.50	Vertical
2	17994.3743	27.22	18.66	45.88	54.00	-8.12	Vertical

Note: 1. Measurement = Reading Level + Correct Factor.

2. If peak result complies with AV limit, AV Result is deemed to comply with AV limit.
3. Peak result: Peak detector, RBW: 1 MHz, VBW: 3 MHz.
4. Average result: Peak detector, RBW: 1 MHz, VBW: 1/T MHz(refer to clause 7.1.).
5. For above 3GHz part, filter losses were only considered in the spurious frequency bands and the authorized band was not corrected for HPF losses.
6. Only the worst case emission was recorded, if it complies with the limit, the other emissions deemed to comply with the limit.

Test Mode	Channel	Polarization	Verdict
3DH5	HCH	Horizontal	PASS



PK Result:

No.	Frequency	Reading Level	Correct Factor	Result	Limit	Margin	Remark
	[MHz]	[dBuV/m]	[dB]	[dBuV/m]	[dBuV/m]	[dB]	
1	4998.9999	51.71	-3.72	47.99	74.00	-26.01	Horizontal
2	7498.6873	45.81	0.35	46.16	74.00	-27.84	Horizontal
3	8500.0625	46.22	2.09	48.31	74.00	-25.69	Horizontal
4	12001.1251	45.72	6.29	52.01	74.00	-21.99	Horizontal
5	12760.5951	45.64	6.95	52.59	74.00	-21.41	Horizontal
6	17608.076	37.11	17.59	54.70	74.00	-19.30	Horizontal
7	17911.864	35.67	18.98	54.65	74.00	-19.35	Horizontal

AV Result:

No.	Frequency	Reading Level	Correct Factor	Result	Limit	Margin	Remark
	[MHz]	[dBuV/m]	[dB]	[dBuV/m]	[dBuV/m]	[dB]	
1	17608.076	27.28	17.59	44.87	54.00	-9.13	Horizontal
2	17911.864	26.03	18.98	45.01	54.00	-8.99	Horizontal

Note: 1. Measurement = Reading Level + Correct Factor.

2. If peak result complies with AV limit, AV Result is deemed to comply with AV limit.

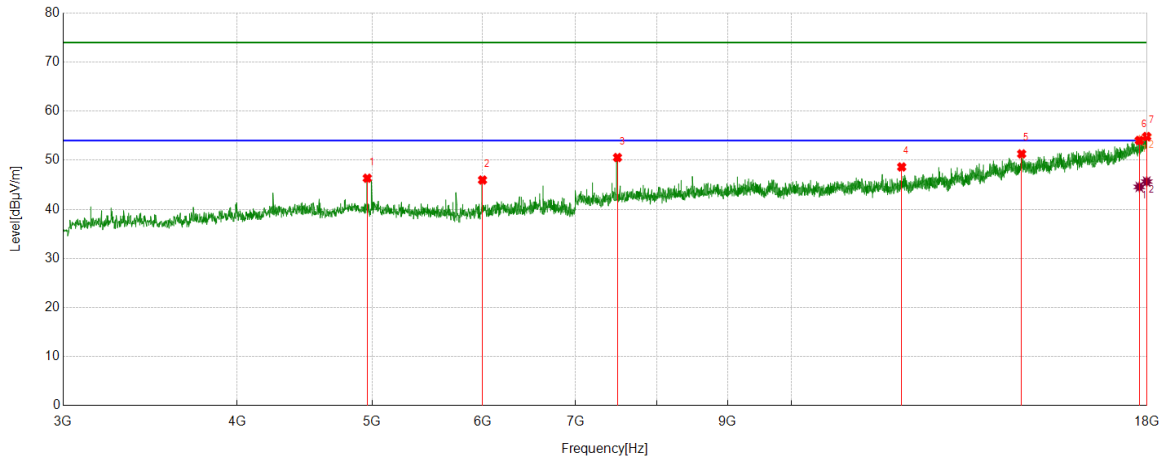
3. Peak result: Peak detector, RBW: 1 MHz, VBW: 3 MHz.

4. Average result: Peak detector, RBW: 1 MHz, VBW: 1/T MHz(refer to clause 7.1.).

5. For above 3GHz part, filter losses were only considered in the spurious frequency bands and the authorized band was not corrected for HPF losses.

6. Only the worst case emission was recorded, if it complies with the limit, the other emissions deemed to comply with the limit.

Test Mode	Channel	Polarization	Verdict
3DH5	HCH	Vertical	PASS



PK Result:

No.	Frequency	Reading Level	Correct Factor	Result	Limit	Margin	Remark
	[MHz]	[dBuV/m]	[dB]	[dBuV/m]	[dBuV/m]	[dB]	
1	4959.62	50.52	-4.18	46.34	74.00	-27.66	Vertical
2	6000.375	48.45	-2.48	45.97	74.00	-28.03	Vertical
3	7500.5626	50.22	0.33	50.55	74.00	-23.45	Vertical
4	11999.2499	42.33	6.30	48.63	74.00	-25.37	Vertical
5	14630.2038	39.30	11.99	51.29	74.00	-22.71	Vertical
6	17773.0966	35.95	18.08	54.03	74.00	-19.97	Vertical
7	17990.6238	36.23	18.59	54.82	74.00	-19.18	Vertical

AV Result:

No.	Frequency	Reading Level	Correct Factor	Result	Limit	Margin	Remark
	[MHz]	[dBuV/m]	[dB]	[dBuV/m]	[dBuV/m]	[dB]	
1	17773.0966	26.49	18.08	44.57	54.00	-9.43	Vertical
2	17990.6238	27.06	18.59	45.65	54.00	-8.35	Vertical

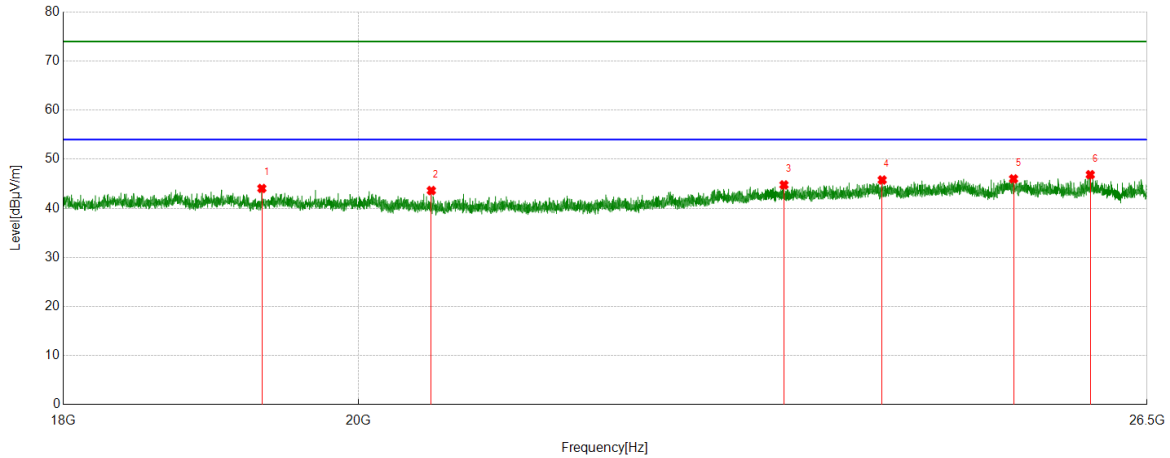
Note: 1. Measurement = Reading Level + Correct Factor.

2. If peak result complies with AV limit, AV Result is deemed to comply with AV limit.
3. Peak result: Peak detector, RBW: 1 MHz, VBW: 3 MHz.
4. Average result: Peak detector, RBW: 1 MHz, VBW: 1/T MHz(refer to clause 7.1.).
5. For above 3GHz part, filter losses were only considered in the spurious frequency bands and the authorized band was not corrected for HPF losses.
6. Only the worst case emission was recorded, if it complies with the limit, the other emissions deemed to comply with the limit.

Part 3: 18GHz~26.5GHz

SPURIOUS EMISSIONS 18GHz TO 26.5GHz (WORST-CASE CONFIGURATION)

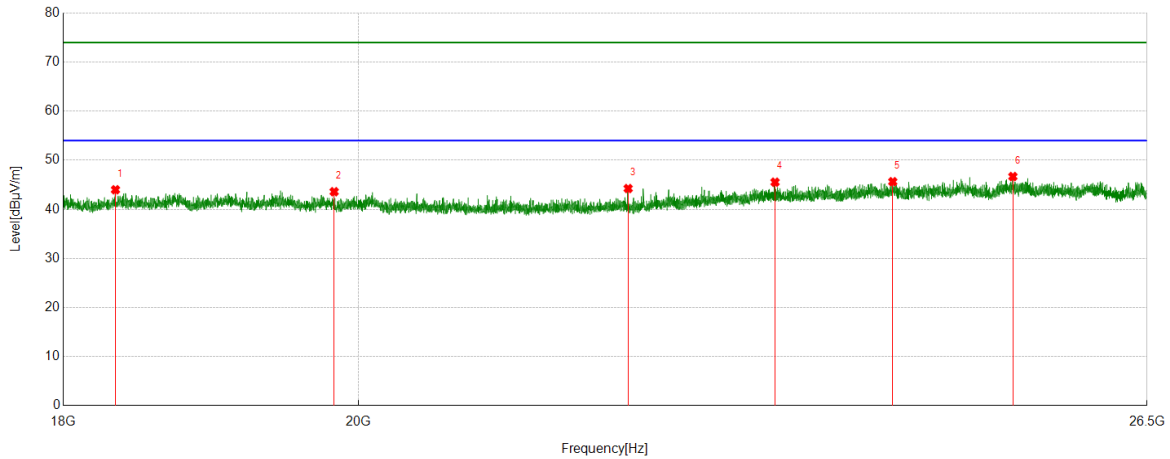
Test Mode	Channel	Polarization	Verdict
DH5	MCH	Horizontal	PASS



No.	Frequency	Reading Level	Correct Factor	Result	Limit	Margin	Remark
	[MHz]	[dBuV/m]	[dB]	[dBuV/m]	[dBuV/m]	[dB]	
1	19322.7323	49.65	-5.60	44.05	74.00	-29.95	Peak
2	20527.3027	49.31	-5.69	43.62	74.00	-30.38	Peak
3	23279.878	48.10	-3.33	44.77	74.00	-29.23	Peak
4	24110.411	48.48	-2.71	45.77	74.00	-28.23	Peak
5	25267.3767	49.34	-3.34	46.00	74.00	-28.00	Peak
6	25968.6969	49.56	-2.71	46.85	74.00	-27.15	Peak

- Note: 1. If Peak Result complies with AV limit, AV Result is deemed to comply with AV limit.
 2. Test setup: RBW: 1 MHz, VBW: 3 MHz, Sweep time: auto.
 3. Measurement = Reading Level + Correct Factor.
 4. Only the worst case emission was recorded, if it complies with the limit, the other emissions deemed to comply with the limit.

Test Mode	Channel	Polarization	Verdict
DH5	MCH	Vertical	PASS



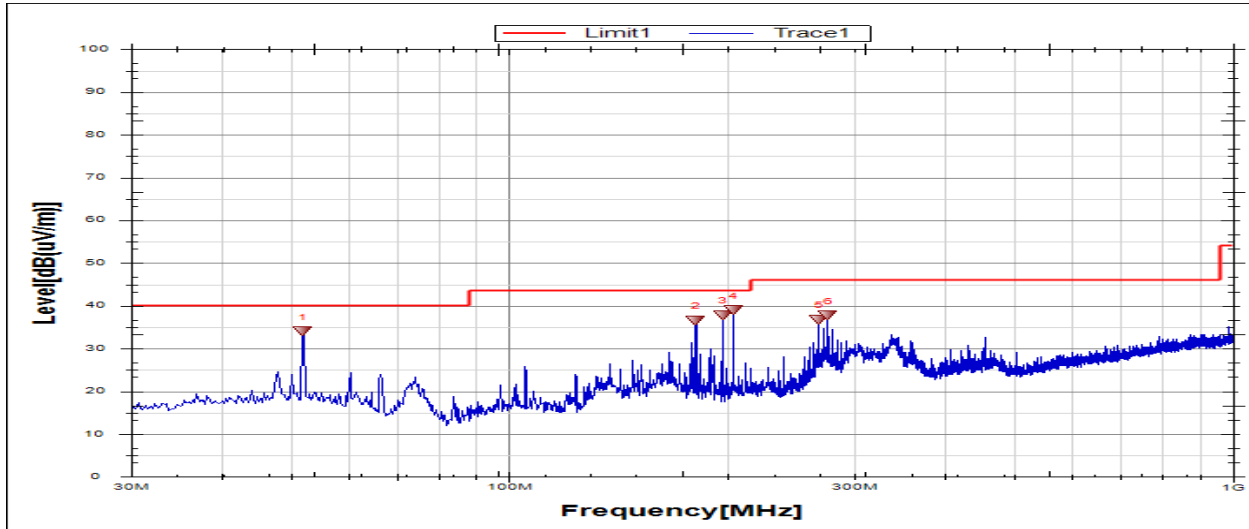
No.	Frequency	Reading Level	Correct Factor	Result	Limit	Margin	Remark
	[MHz]	[dBuV/m]	[dB]	[dBuV/m]	[dBuV/m]	[dB]	
1	18339.1839	50.71	-6.72	43.99	74.00	-30.01	Peak
2	19827.6828	48.87	-5.28	43.59	74.00	-30.41	Peak
3	22020.9021	49.96	-5.72	44.24	74.00	-29.76	Peak
4	23205.9206	48.93	-3.40	45.53	74.00	-28.47	Peak
5	24201.3701	48.42	-2.79	45.63	74.00	-28.37	Peak
6	25261.4261	50.02	-3.34	46.68	74.00	-27.32	Peak

- Note: 1. If Peak Result complies with AV limit, AV Result is deemed to comply with AV limit.
 2. Test setup: RBW: 1 MHz, VBW: 3 MHz, Sweep time: auto.
 3. Measurement = Reading Level + Correct Factor.
 4. Only the worst case emission was recorded, if it complies with the limit, the other emissions deemed to comply with the limit.

Part 4: 30MHz~1GHz

SPURIOUS EMISSIONS 30M TO 1GHz (WORST-CASE CONFIGURATION)

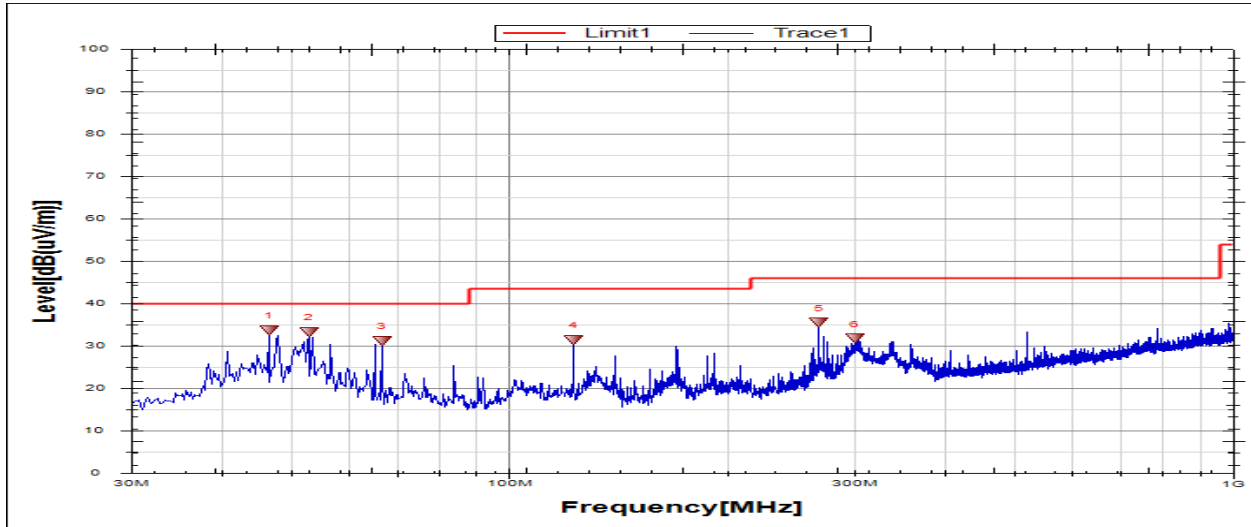
Test Mode	Channel	Polarization	Verdict
DH5	MCH	Horizontal	PASS



No.	Frequency	Reading Level	Correct Factor	Result	Limit	Margin	Remark
	[MHz]	[dBuV/m]	[dB]	[dBuV/m]	[dBuV/m]	[dB]	
1	51.8305	13.17	20.79	33.96	40.0	-6.04	Peak
2	181.1155	19.66	16.94	36.60	43.5	-6.90	Peak
3	197.3671	19.30	18.58	37.88	43.5	-5.62	Peak
4	203.9162	19.99	18.95	38.94	43.5	-4.56	Peak
5	267.9523	16.11	20.68	36.79	46.0	-9.21	Peak
6	275.9569	16.90	20.78	37.68	46.0	-8.32	Peak

Note: 1. If Peak Result complies with QP limit, QP Result is deemed to comply with QP limit.
 2. Test setup: RBW: 120 kHz, VBW: 300 kHz, Sweep time: auto.
 3. Measurement = Reading Level + Correct Factor.

Test Mode	Channel	Polarization	Verdict
DH5	MCH	Vertical	PASS



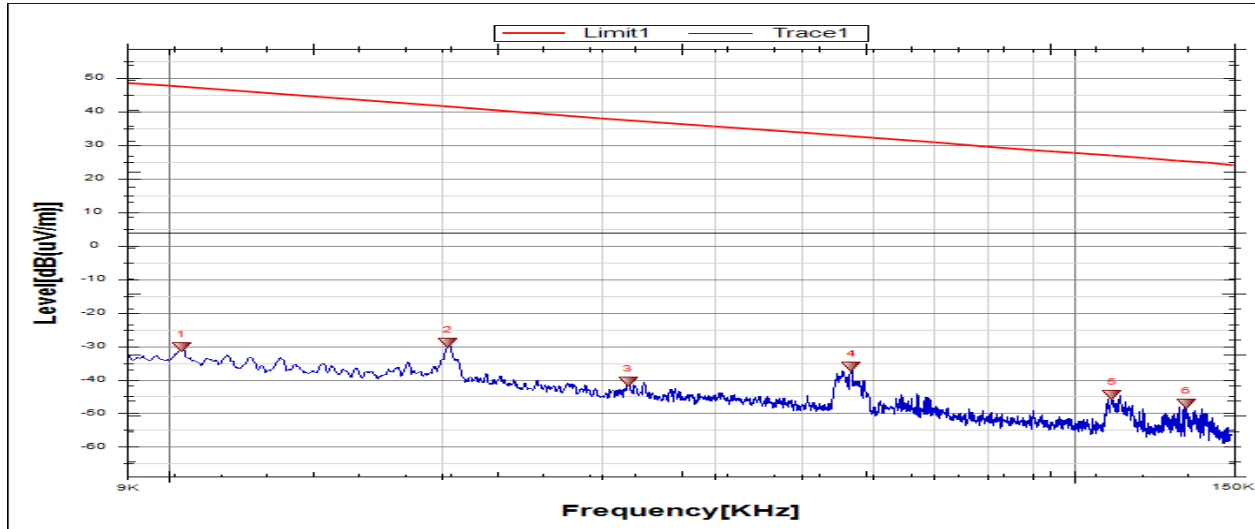
No.	Frequency	Reading Level	Correct Factor	Result	Limit	Margin	Remark
	[MHz]	[dBuV/m]	[dB]	[dBuV/m]	[dBuV/m]	[dB]	
1	46.4941	13.04	20.65	33.69	40.0	-6.31	Peak
2	52.8007	12.66	20.64	33.30	40.0	-6.70	Peak
3	66.6267	13.78	17.43	31.21	40.0	-8.79	Peak
4	122.6583	14.82	16.57	31.39	43.5	-12.11	Peak
5	267.9523	14.86	20.68	35.54	46.0	-10.46	Peak
6	299.9704	10.63	21.16	31.79	46.0	-14.21	Peak

Note: 1. If Peak Result complies with QP limit, QP Result is deemed to comply with QP limit.
 2. Test setup: RBW: 120 kHz, VBW: 300 kHz, Sweep time: auto.
 3. Measurement = Reading Level + Correct Factor.

Part 5: 9kHz~30MHz

SPURIOUS EMISSIONS Below 30MHz (WORST CASE CONFIGURATION-FACE ON)

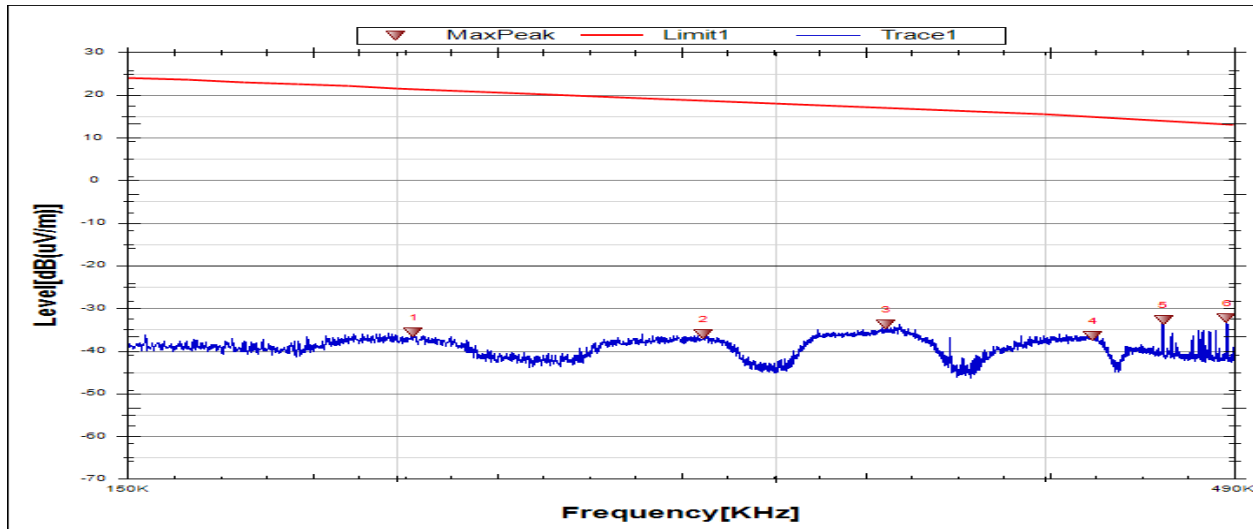
Test Mode	Channel	Frequency Range	Verdict
DH5	MCH	9kHz~150kHz	PASS



No.	Frequency	Reading Level	Correct Factor	FCC Result	FCC Limit	ISED Result	ISED Limit	Margin	Remark
	[MHz]	[dBuV/m]	[dB]	[dBuV/m]	[dBuV/m]	[dBuA/m]	[dBuA/m]	[dB]	
1	0.0103	31.66	-61.91	-30.25	47.42	-81.75	-4.08	-77.67	Peak
2	0.0203	32.84	-61.81	-28.97	41.47	-80.47	-10.03	-70.44	Peak
3	0.0321	21.20	-61.71	-40.51	37.54	-92.01	-13.96	-78.05	Peak
4	0.0567	25.8	-61.73	-35.93	32.56	-87.43	-18.94	-68.49	Peak
5	0.1101	17.35	-61.82	-44.47	26.77	-95.97	-24.73	-71.24	Peak
6	0.1328	14.76	-61.83	-47.07	25.15	-98.57	-26.35	-72.22	Peak

- Note: 1. Measurement = Reading Level + Correct Factor.
 2. If Peak Result complies with AV and QP limit, AV and QP Result are deemed to comply with AV limit.
 3. All 3 polarizations(Horizontal, Face-on and Face-off) of the loop antenna had been tested, but only the worst data recorded in the report.

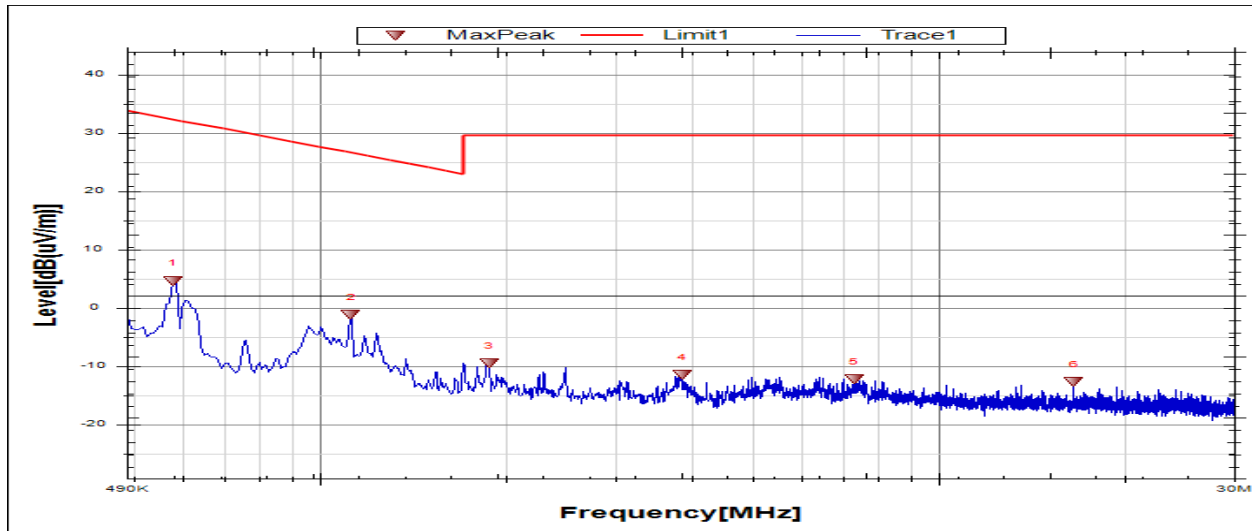
Test Mode	Channel	Frequency Range	Verdict
DH5	MCH	150kHz~490kHz	PASS



No.	Frequency	Reading Level	Correct Factor	FCC Result	FCC Limit	ISED Result	ISED Limit	Margin	Remark
	[MHz]	[dBuV/m]	[dB]	[dBuV/m]	[dBuV/m]	[dBuA/m]	[dBuA/m]	[dB]	
1	0.2037	26.27	-61.86	-35.59	21.45	-87.09	-30.05	-57.04	Peak
2	0.2778	25.9	-61.90	-36.00	18.84	-87.50	-32.66	-54.84	Peak
3	0.3378	28.09	-61.9	-33.81	17.11	-85.31	-34.39	-50.92	Peak
4	0.4215	25.41	-61.88	-36.47	14.97	-87.97	-36.53	-51.44	Peak
5	0.4543	29.2	-61.88	-32.68	14.06	-84.18	-37.44	-46.74	Peak
6	0.4866	29.61	-61.87	-32.26	13.17	-83.76	-38.33	-45.43	Peak

- Note: 1. Measurement = Reading Level + Correct Factor.
 2. If Peak Result complies with AV and QP limit, AV and QP Result are deemed to comply with AV limit.
 3. All 3 polarizations(Horizontal, Face-on and Face-off) of the loop antenna had been tested, but only the worst data recorded in the report.

Test Mode	Channel	Frequency Range	Verdict
DH5	MCH	490kHz~30MHz	PASS



No.	Frequency	Reading Level	Correct Factor	FCC Result	FCC Limit	ISED Result	ISED Limit	Margin	Remark
	[MHz]	[dBuV/m]	[dB]	[dBuV/m]	[dBuV/m]	[dBuA/m]	[dBuA/m]	[dB]	
1	0.5785	26.5	-21.88	4.62	32.38	-46.88	-19.12	-27.76	Peak
2	1.1246	20.68	-21.85	-1.17	26.59	-52.67	-24.91	-27.76	Peak
3	1.8773	12.30	-21.82	-9.52	29.54	-61.02	-21.96	-39.06	Peak
4	3.8474	10.25	-21.75	-11.5	29.54	-63.00	-21.96	-41.04	Peak
5	7.2934	9.48	-21.72	-12.24	29.54	-63.74	-21.96	-41.78	Peak
6	16.5393	8.83	-21.52	-12.69	29.54	-64.19	-21.96	-42.23	Peak

- Note: 1. Measurement = Reading Level + Correct Factor.
 2. If Peak Result complies with AV and QP limit, AV and QP Result are deemed to comply with AV limit.
 3. All 3 polarizations(Horizontal, Face-on and Face-off) of the loop antenna had been tested, but only the worst data recorded in the report.

8. ANTENNA REQUIREMENTS

APPLICABLE REQUIREMENTS

Please refer to FCC §15.203

An intentional radiator shall be designed to ensure that no antenna other than that furnished by the responsible party shall be used with the device. The use of a permanently attached antenna or of an antenna that uses a unique coupling to the intentional radiator shall be considered sufficient to comply with the provisions of this section. The manufacturer may design the unit so that a broken antenna can be replaced by the user, but the use of a standard antenna jack or electrical connector is prohibited.

Please refer to FCC §15.247(b)(4)

The conducted output power limit specified in paragraph (b) of this section is based on the use of antennas with directional gains that do not exceed 6 dBi. Except as shown in paragraph (c) of this section, if transmitting antennas of directional gain greater than 6 dBi are used, the conducted output power from the intentional radiator shall be reduced below the stated values in paragraphs (b)(1), (b)(2), and (b)(3) of this section, as appropriate, by the amount in dB that the directional gain of the antenna exceeds 6 dBi.

ANTENNA GAIN

The antenna gain of EUT is less than 6 dBi

END OF REPORT