

Internal Images

DISPLAY PCB



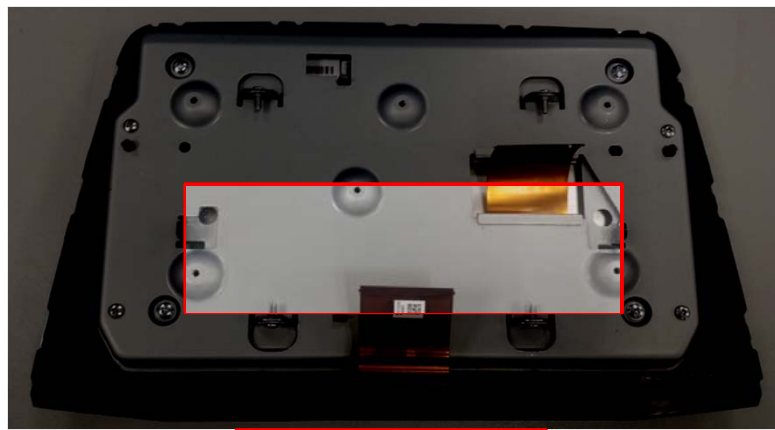
DISPLAY PCB (Top)



DISPLAY PCB (Bottom)

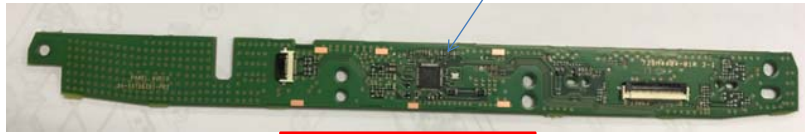


DISPLAY PCB Mounted Image

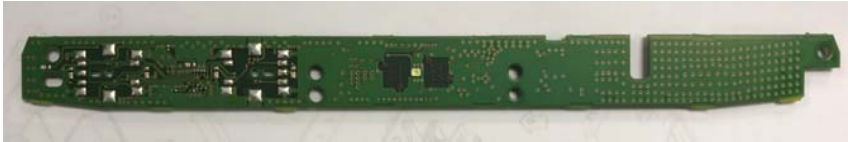


DISPLAY PCB Mounting Position

AUDIO PCB



AUDIO PCB (Top)



AUDIO PCB (Bottom)



AUDIO PCB Mounted Image

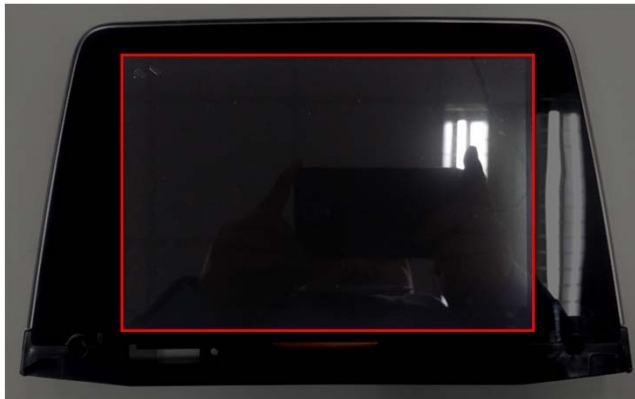


AUDIO PCB Mounting Position



Antenna Position

LCD



LCD Mounted Image (Front)



LCD Mounted Image (Back)