

FCC REPORT

Applicant: DawnSun Electronic Technology.Co.,Ltd.ZhongShan

Address of Applicant: NO.8 NANYI STREET ,XINGGONG RD SHAXI TOWN, ZHONGSHAN,GUANGDONG, China 528471

Manufacturer/ Factory: DawnSun Electronic Technology.Co.,Ltd.ZhongShan

Address of Manufacturer/Factory: NO.8 NANYI STREET ,XINGGONG RD SHAXI TOWN, ZHONGSHAN,GUANGDONG, China 528471

Equipment Under Test (EUT)

Product Name: Remote Control – Transmitter

Model No.: TX028-N, TX028-L, TX028-S, TX028-C, TX028-R, TX028-LR, TX028-LS, TX028-LC, TX028-RS, TX028-RC, TX028-LRS, TX028-LRC, TX028C-N, TX028C-L, TX028C-S, TX028C-C, TX028C-R, TX028C-LR, TX028C-LS, TX028C-LC, TX028C-RS, TX028C-RC, TX028C-LRS, TX028C-LRC

FCC ID: A25-TX028

Applicable standards: FCC CFR Title 47 Part 15 Subpart C Section 15.231

Date of sample receipt: April 23, 2018

Date of Test: April 24-26, 2018

Date of report issued: April 27, 2018

Test Result : PASS *

* In the configuration tested, the EUT complied with the standards specified above.

Authorized Signature:



Robinson Lo

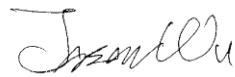
Laboratory Manager

This results shown in this test report refer only to the sample(s) tested, this test report cannot be reproduced, except in full, without prior written permission of the company. The report would be invalid without specific stamp of test institute and the signatures of compiler and approver.

2 Version

Version No.	Date	Description
01	April 27, 2018	Original

Prepared By:

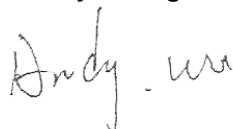


Date:

April 27, 2018

Project Engineer

Check By:



Date:

April 27, 2018

Reviewer

3 Contents

	Page
1 COVER PAGE	1
2 VERSION	2
3 CONTENTS	3
4 TEST SUMMARY	4
4.1 MEASUREMENT UNCERTAINTY	4
5 GENERAL INFORMATION	5
5.1 GENERAL DESCRIPTION OF EUT	5
5.2 TEST MODE	7
5.3 DESCRIPTION OF SUPPORT UNITS	7
5.4 TEST FACILITY	7
5.5 TEST LOCATION	7
5.6 OTHER INFORMATION REQUESTED BY THE CUSTOMER.....	7
6 TEST INSTRUMENTS LIST	8
7 TEST RESULTS AND MEASUREMENT DATA	9
7.1 ANTENNA REQUIREMENT	9
7.2 RADIATED EMISSION METHOD.....	10
7.2.1 <i>Field Strength of The Fundamental Signal</i>	12
7.2.2 <i>Spurious Emissions</i>	13
7.3 20dB OCCUPY BANDWIDTH	16
7.4 DWELL TIME	17
7.5 DUTY CYCLE	18
8 TEST SETUP PHOTO	21
9 EUT CONSTRUCTIONAL DETAILS.....	22

4 Test Summary

Test Item	Section in CFR 47	Result
Antenna Requirement	15.203	Pass
Conduction Emission	15.207	N/A
Field strength of the Fundamental Signal	15.231 (b)	Pass
Spurious Emissions	15.231 (b)/15.209	Pass
20dB Bandwidth	15.231 (c)	Pass
Dwell Time	15.231 (a)(1)	Pass

Pass: The EUT complies with the essential requirements in the standard.

N/A: Not applicable

4.1 Measurement Uncertainty

Test Item	Frequency Range	Measurement Uncertainty	Notes
Radiated Emission	9kHz ~ 30MHz	± 4.34dB	(1)
Radiated Emission	30MHz ~ 1000MHz	± 4.24dB	(1)
Radiated Emission	1GHz ~ 26.5GHz	± 4.68dB	(1)
AC Power Line Conducted Emission	0.15MHz ~ 30MHz	± 3.45dB	(1)

Note (1): The measurement uncertainty is for coverage factor of k=2 and a level of confidence of 95%.

5 General Information

5.1 General Description of EUT

Product Name:	Remote Control – Transmitter
Model No.:	TX028-N, TX028-L, TX028-S, TX028-C, TX028-R, TX028-LR, TX028-LS, TX028-LC, TX028-RS, TX028-RC, TX028-LRS, TX028-LRC, TX028C-N, TX028C-L, TX028C-S, TX028C-C, TX028C-R, TX028C-LR, TX028C-LS, TX028C-LC, TX028C-RS, TX028C-RC, TX028C-LRS, TX028C-LRC
Test Model No:	TX028-N

Remark: The below products have the same technical construction including circuit diagram, PCB Layout, components and component layout, all electrical construction and mechanical construction. The difference lies only below:

Model no.	Function				
	S3	S5	S6	S4	DSW1 (total 5 switching positions)
TX028-N		○			
TX028-L		○		○	
TX028-S		○			○
TX028-C		○			Only use the fourth position
TX028-R		○			Only use the fifth position
TX028-LR		○		○	Only use the fifth position
TX028-LS		○		○	○
TX028-LC		○		○	Only use the fourth position
TX028-RS		○			○
TX028-RC		○			Use the fourth and fifth positions
TX028-LRS		○		○	○
TX028-LRC		○		○	Use the fourth and fifth positions
TX028C-N	○		○		
TX028C-L	○		○	○	
TX028C-S	○		○		○
TX028C-C	○		○		Only use the fourth position
TX028C-R	○		○		Only use the fifth position
TX028C-LR	○		○	○	Only use the fifth position
TX028C-LS	○		○	○	○
TX028C-LC	○		○	○	Only use the fourth position
TX028C-RS	○		○		○
TX028C-RC	○		○		Use the fourth and fifth positions

TX028C-LRS	○		○	○	○
TX028C-LRC	○		○	○	Use the fourth and fifth positions
<p><i>The keys S3, S4, S5, S6 and DSW1 are function keys. These are optional for all models and no influence to RF performance.</i></p>					
Serial No.:	2018-426				
Test sample(s) ID:	GTS201804000241-1				
Sample(s) Status:	Engineer sample				
Hardware:	TX028C				
Software:	A9FF				
Operation Frequency:	304MHz				
Modulation technology:	ASK				
Antenna Type:	PCB Antenna				
Antenna gain:	0dBi (declare by applicant)				
Power supply:	DC 12.0V (1 x 12V "23A" Size battery)				

5.2 Test mode

Transmitting mode	Keep the EUT in transmitting mode.
-------------------	------------------------------------

Per-test mode.

We have verified the construction and function in typical operation, The EUT was placed on three different polar directions; i.e. X axis, Y axis, Z axis. which only the worst case was shown in this test report and defined as follows:

Axis	X	Y	Z
Field Strength(dBuV/m)	82.67	83.51	80.59

5.3 Description of Support Units

None.

5.4 Test Facility

The test facility is recognized, certified, or accredited by the following organizations:

- **FCC —Registration No.: 381383**

Global United Technology Services Co., Ltd., Shenzhen EMC Laboratory has been registered and fully described in a report filed with the (FCC) Federal Communications Commission. The acceptance letter from the FCC is maintained in files. Registration 381383, January 08, 2018.

- **Industry Canada (IC) —Registration No.: 9079A-2**

The 3m Semi-anechoic chamber of Global United Technology Services Co., Ltd. has been registered by Certification and Engineering Bureau of Industry Canada for radio equipment testing with Registration No.: 9079A-2, August 15, 2016

5.5 Test Location

All tests were performed at:

Global United Technology Services Co., Ltd.
 No. 301-309, 3/F., Jinyuan Business Building, No.2, Laodong Industrial Zone,
 Xixiang Road, Baoan District, Shenzhen, Guangdong, China
 Tel: 0755-27798480
 Fax: 0755-27798960

5.6 Other Information Requested by the Customer

None.

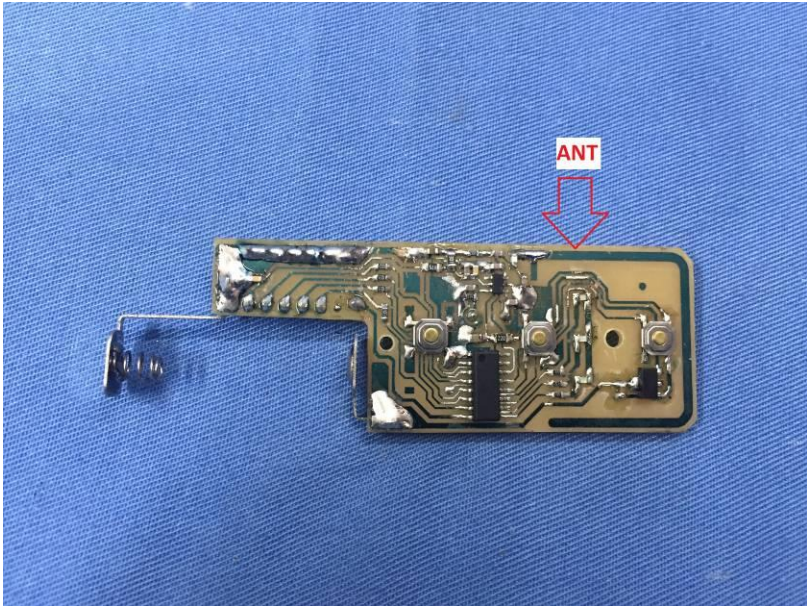
6 Test Instruments list

Radiated Emission:						
Item	Test Equipment	Manufacturer	Model No.	Inventory No.	Cal.Date (mm-dd-yy)	Cal.Due date (mm-dd-yy)
1	3m Semi- Anechoic Chamber	ZhongYu Electron	9.0(L)*6.0(W)* 6.0(H)	GTS250	July. 03 2015	July. 02 2020
2	Control Room	ZhongYu Electron	6.2(L)*2.5(W)* 2.4(H)	GTS251	N/A	N/A
3	Spectrum Analyzer	Agilent	E4440A	GTS533	June 28 2017	June 27 2018
4	EMI Test Receiver	Rohde & Schwarz	ESU26	GTS203	June 28 2017	June 27 2018
5	BiConiLog Antenna	SCHWARZBECK MESS-ELEKTRONIK	VULB9163	GTS214	June 28 2017	June 27 2018
6	Double -ridged waveguide horn	SCHWARZBECK MESS-ELEKTRONIK	9120D-829	GTS208	June 28 2017	June 27 2018
7	Horn Antenna	ETS-LINDGREN	3160	GTS217	June 28 2017	June 27 2018
8	EMI Test Software	AUDIX	E3	N/A	N/A	N/A
9	Coaxial Cable	GTS	N/A	GTS213	June 28 2017	June 27 2018
10	Coaxial Cable	GTS	N/A	GTS211	June 28 2017	June 27 2018
11	Coaxial cable	GTS	N/A	GTS210	June 28 2017	June 27 2018
12	Coaxial Cable	GTS	N/A	GTS212	June 28 2017	June 27 2018
13	Amplifier(100kHz-3GHz)	HP	8347A	GTS204	June 28 2017	June 27 2018
14	Amplifier(2GHz-20GHz)	HP	8349B	GTS206	June 28 2017	June 27 2018
15	Amplifier (18-26GHz)	Rohde & Schwarz	AFS33-18002 650-30-8P-44	GTS218	June 28 2017	June 27 2018
16	Band filter	Amindeon	82346	GTS219	June 28 2017	June 27 2018

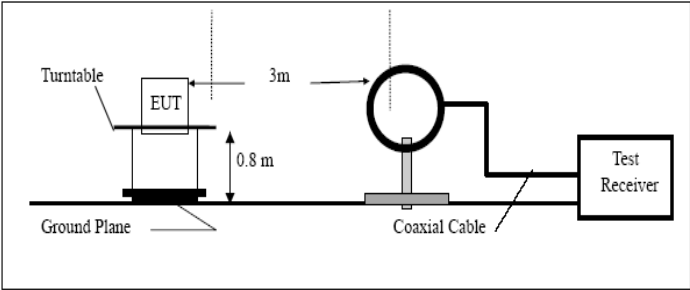
General used equipment:						
Item	Test Equipment	Manufacturer	Model No.	Inventory No.	Cal.Date (mm-dd-yy)	Cal.Due date (mm-dd-yy)
1	Barometer	ChangChun	DYM3	GTS257	June 29 2016	June 28 2017

7 Test results and Measurement Data

7.1 Antenna Requirement

Standard requirement:	FCC Part15 C Section 15.203
15.203 requirement: An intentional radiator shall be designed to ensure that no antenna other than that furnished by the responsible party shall be used with the device. The use of a permanently attached antenna or of an antenna that uses a unique coupling to the intentional radiator, the manufacturer may design the unit so that a broken antenna can be replaced by the user, but the use of a standard antenna jack or electrical connector is prohibited.	
EUT Antenna:	
The antenna is PCB antenna, the best case gain of the antenna is 0dBi.	
	

7.2 Radiated Emission Method

Test Requirement:	FCC Part15 C Section 15.231 (b)& Section 15.209				
Test Method:	ANSI C63.10:2013				
Test Frequency Range:	9kHz to 4000MHz				
Test site:	Measurement Distance: 3m				
Receiver setup:	Frequency	Detector	RBW	VBW	Value
	9KHz-150KHz	Quasi-peak	200Hz	600Hz	Quasi-peak
	150KHz-30MHz	Quasi-peak	9KHz	30KHz	Quasi-peak
	30MHz-1GHz	Quasi-peak	100KHz	300KHz	Quasi-peak
	Above 1GHz	Peak	1MHz	3MHz	Peak
Peak		1MHz	10Hz	Average	
Limit: (Field strength of the fundamental signal)	Frequency	Limit (dBuV/m @3m)		Remark	
	304MHz	74.94		Average Value	
		94.94		Peak Value	
Limit: (Spurious Emissions)	Frequency	Limit (uV/m)	Value	Measurement Distance	
	0.009MHz-0.490MHz	2400/F(KHz)	QP	300m	
	0.490MHz-1.705MHz	24000/F(KHz)	QP	300m	
	1.705MHz-30MHz	30	QP	30m	
	30MHz-88MHz	100	QP	3m	
	88MHz-216MHz	150	QP		
	216MHz-960MHz	200	QP		
	960MHz-1GHz	500	QP		
	Above 1GHz	500	Average		
		5000	Peak		
Or The maximum permitted unwanted emission level is 20 dB below the maximum permitted fundamental level whichever limit permits a higher field strength.					
Test setup:	Below 30MHz				
					
Below 1GHz					

	<p>Above 1GHz</p>
<p>Test Procedure:</p>	<ol style="list-style-type: none"> 1. The EUT was placed on the top of a rotating table (0.8 meters for below 1GHz and 1.5 meters for above 1GHz) above the ground at a 3 meter camber. The table was rotated 360 degrees to determine the position of the highest radiation. 2. The EUT was set 3 meters away from the interference-receiving antenna, which was mounted on the top of a variable-height antenna tower. 3. The antenna height is varied from one meter to four meters above the ground to determine the maximum value of the field strength. Both horizontal and vertical polarizations of the antenna are set to make the measurement. 4. For each suspected emission, the EUT was arranged to its worst case and then the antenna was tuned to heights from 1 meter to 4 meters and the rota table was turned from 0 degrees to 360 degrees to find the maximum reading. 5. The test-receiver system was set to Peak Detect Function and Specified Bandwidth with Maximum Hold Mode. 6. If the emission level of the EUT in peak mode was 10dB lower than the limit specified, then testing could be stopped and the peak values of the EUT would be reported. Otherwise the emissions that did not have 10dB margin would be re-tested one by one using peak, quasi-peak or average method as specified and then reported in a data sheet.
<p>Test Instruments:</p>	<p>Refer to section 6.0 for details</p>
<p>Test mode:</p>	<p>Refer to section 5.2 for details</p>
<p>Test results:</p>	<p>Pass</p>

Measurement data:

7.2.1 Field Strength of The Fundamental Signal

Peak value:

Frequency (MHz)	Read Level (dBuV)	Antenna Factor (dB/m)	Cable Loss (dB)	Preamp Factor (dB)	Level (dBuV/m)	Limit Line (dBuV/m)	Over Limit (dB)	polarization
304.00	104.87	13.68	2.38	37.42	83.51	94.94	-11.43	Horizontal
304.00	90.22	13.68	2.38	37.42	68.86	94.94	-26.08	Vertical

Remark: Final Level = Receiver Read level + Antenna Factor + Cable Loss – Preamplifier Factor

Average value:

Frequency (MHz)	Peak Value (dBuV/m)	Average factor	Average value (dBuV/m)	Limit Line (dBuV/m)	Over Limit (dB)	Polarization
304.00	83.51	-12.32	71.19	74.94	-3.75	Horizontal
304.00	68.86	-12.32	56.54	74.94	-18.4	Vertical

Remark: Average value = Peak value + Duty cycle factor

7.2.2 Spurious Emissions

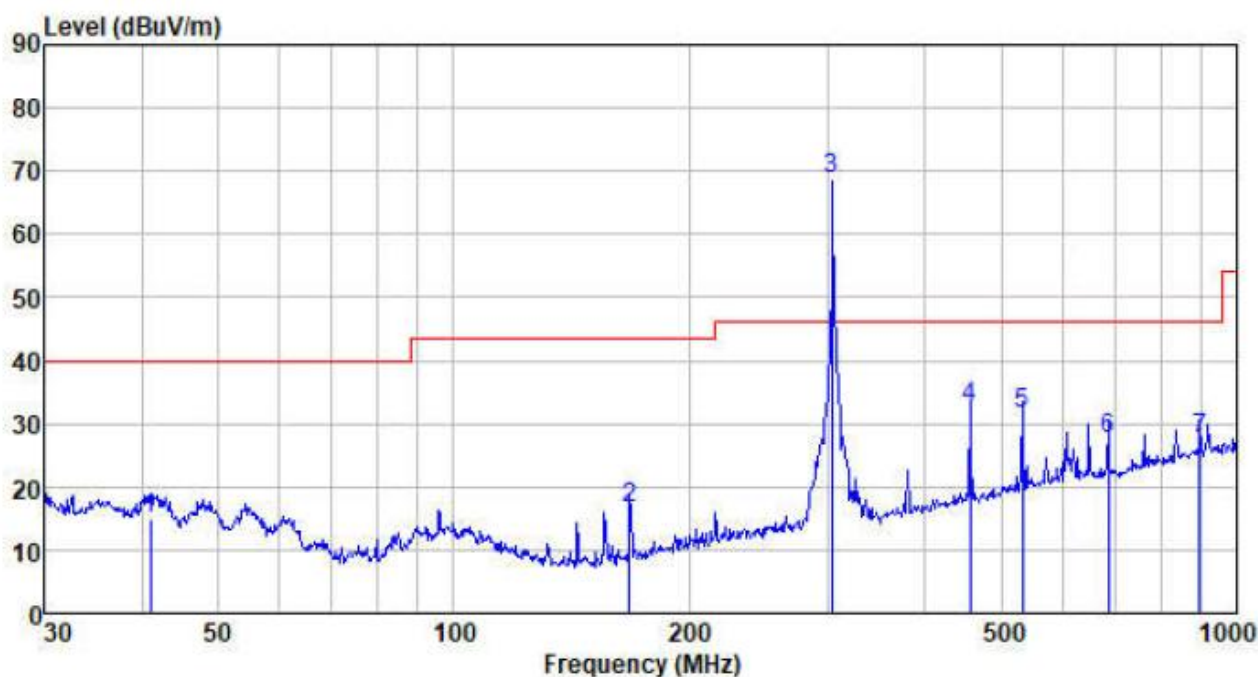
Measurement data:

9 kHz ~ 30 MHz

The low frequency, which started from 9 kHz to 30 MHz, was pre-scanned and the result which was 20 dB lower than the limit line per 15.31(o) was not reported.

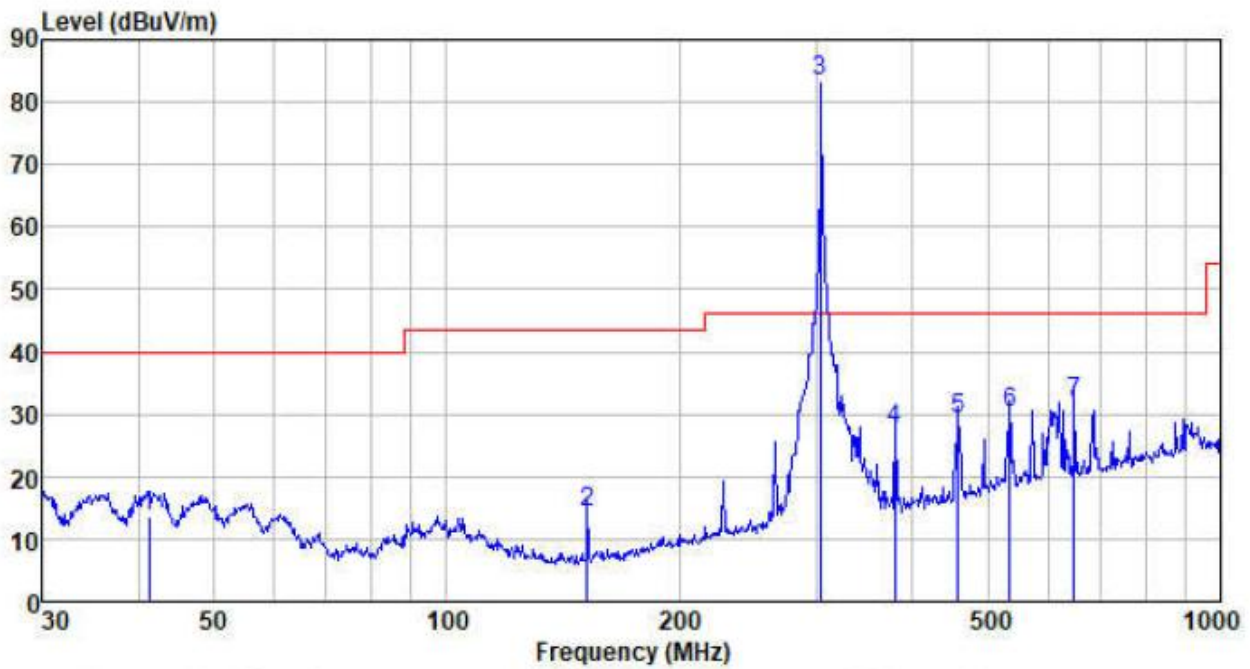
Below 1GHz:

Vertical:



Freq MHz	Reading level dBuV	Antenna factor dB/m	Cable loss dB	Preamp factor dB	level dBuV	Limit level dBuV/m	Over limit dB	Remark
40.988	37.76	12.21	0.67	35.72	14.92	40.00	-25.08	QP
167.824	43.56	8.46	1.67	37.18	16.51	43.50	-26.99	QP
304.000	90.22	13.68	2.38	37.42	68.86	46.00	22.86	Peak
455.906	50.38	16.48	3.11	37.51	32.46	46.00	-13.54	QP
531.964	47.59	18.01	3.45	37.52	31.53	46.00	-14.47	QP
684.745	41.62	19.58	4.04	37.62	27.62	46.00	-18.38	QP
896.997	38.19	22.27	4.83	37.60	27.69	46.00	-18.31	QP

Horizontal:



Freq MHz	Reading level dBuV	Antenna factor dB/m	Cable loss dB	Preamp factor dB	level dBuV	Limit level dBuV/m	Over limit dB	Remark
41.277	36.38	12.21	0.68	35.74	13.53	40.00	-26.47	QP
152.130	42.15	7.80	1.58	37.09	14.44	43.50	-29.06	QP
304.000	104.87	13.68	2.38	37.42	83.51	46.00	37.51	Peak
379.914	47.20	15.00	2.76	37.50	27.46	46.00	-18.54	QP
457.507	47.11	16.52	3.12	37.51	29.24	46.00	-16.76	QP
533.832	46.28	18.07	3.46	37.52	30.29	46.00	-15.71	QP
647.386	46.09	19.55	3.91	37.58	31.97	46.00	-14.03	QP

Above 1G:

Peak value:

Frequency (MHz)	Read Level (dBuV)	Antenna Factor (dB/m)	Cable Loss (dB)	Preamplifier Factor (dB)	Level (dBuV/m)	Limit Line (dBuV/m)	Over Limit (dB)	Polarization
1385.00	36.37	25.62	4.61	36.08	30.52	74.00	-43.48	Vertical
2407.00	34.33	27.57	5.40	36.87	30.43	74.00	-43.57	Vertical
3240.00	35.13	28.58	6.45	37.33	32.83	74.00	-41.17	Vertical
3758.00	29.36	29.32	7.44	37.38	28.74	74.00	-45.26	Vertical
4605.00	29.15	31.51	8.42	37.65	31.43	74.00	-42.57	Vertical
4976.00	29.50	31.94	8.74	37.79	32.39	74.00	-41.61	Vertical
1189.00	37.76	25.29	4.46	35.90	31.61	74.00	-42.39	Horizontal
2036.00	35.23	26.38	5.00	36.53	30.08	74.00	-43.92	Horizontal
2778.00	34.07	28.34	5.73	37.15	30.99	74.00	-43.01	Horizontal
3877.00	30.67	29.47	7.66	37.39	30.41	74.00	-43.59	Horizontal
4409.00	29.68	31.09	8.25	37.57	31.45	74.00	-42.55	Horizontal
5151.00	28.48	32.07	8.99	37.58	31.96	74.00	-42.04	Horizontal

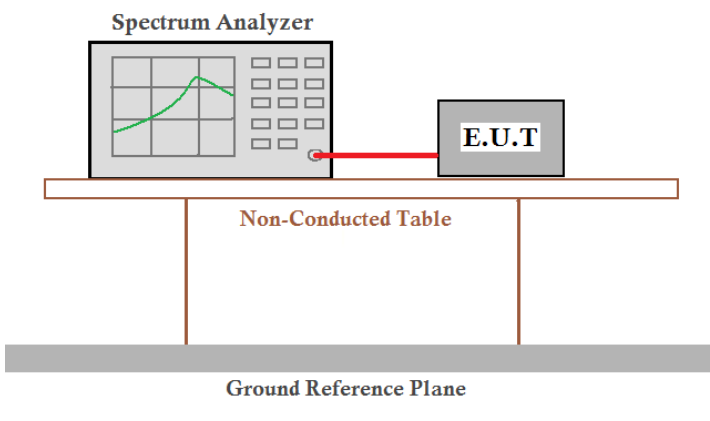
Average value:

Frequency (MHz)	Level (dBuV/m)	Average factor	Average value (dBuV/m)	Limit Line (dBuV/m)	Over Limit (dB)	Polarization
1385.00	30.52	-12.32	18.20	54.00	-35.80	Vertical
2407.00	30.43	-12.32	18.11	54.00	-35.89	Vertical
3240.00	32.83	-12.32	20.51	54.00	-33.49	Vertical
3758.00	28.74	-12.32	16.42	54.00	-37.58	Vertical
4605.00	31.43	-12.32	19.11	54.00	-34.89	Vertical
4976.00	32.39	-12.32	20.07	54.00	-33.93	Vertical
1189.00	31.61	-12.32	19.29	54.00	-34.71	Horizontal
2036.00	30.08	-12.32	17.76	54.00	-36.24	Horizontal
2778.00	30.99	-12.32	18.67	54.00	-35.33	Horizontal
3877.00	30.41	-12.32	18.09	54.00	-35.91	Horizontal
4409.00	31.45	-12.32	19.13	54.00	-34.87	Horizontal
5151.00	31.96	-12.32	19.64	54.00	-34.36	Horizontal

Remark:

1. *Final Level = Receiver Read level + Antenna Factor + Cable Loss – Preamplifier Factor*
2. *Average value = Peak value + Duty cycle factor*

7.3 20dB Occupy Bandwidth

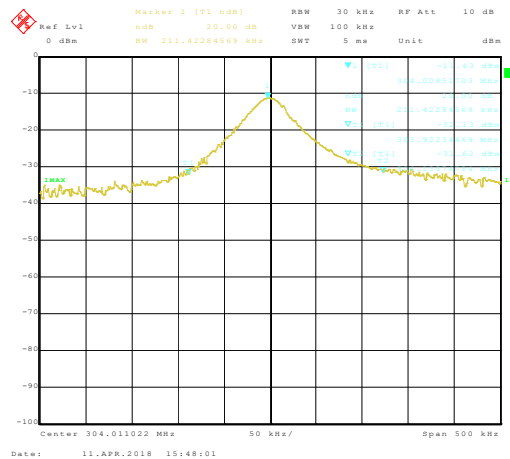
Test Requirement:	FCC Part15 C Section 15.231 (c)
Test Method:	ANSI C63.10:2013
Limit:	The bandwidth of the emission shall be no wider than 0.25% of the center frequency for devices operating above 70 MHz and below 900MHz. For devices operating above 900 MHz, the emission shall be no wider than 0.5% of the center frequency. Bandwidth is determined at the points 20 dB down from the modulated carrier.
Test setup:	 <p>The diagram illustrates the test setup. A Spectrum Analyzer is connected via a red cable to an E.U.T. (Equipment Under Test). Both are placed on a Non-Conducted Table. Below the table is a Ground Reference Plane.</p>
Test Instruments:	Refer to section 6.0 for details
Test mode:	Refer to section 5.2 for details
Test results:	Pass

Measurement Data

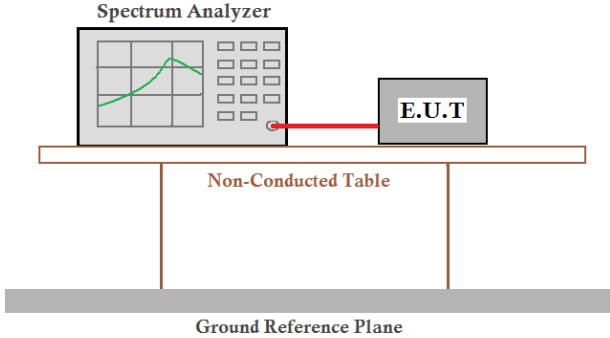
Test Frequency (MHz)	20dB bandwidth (MHz)	Limit (MHz)	Result
304.00	0.211	0.76	Pass

Note: Limit= Fundamental frequency×0.25%=304×0.25%=0.76MHz

Test plot as follows:



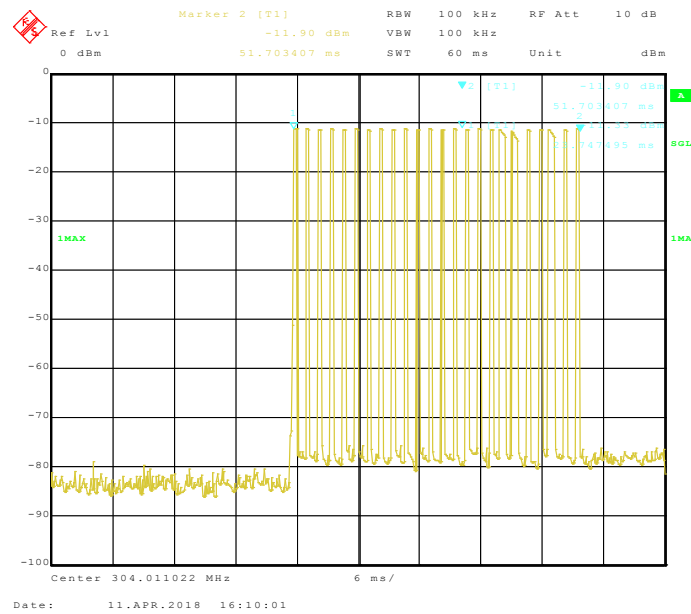
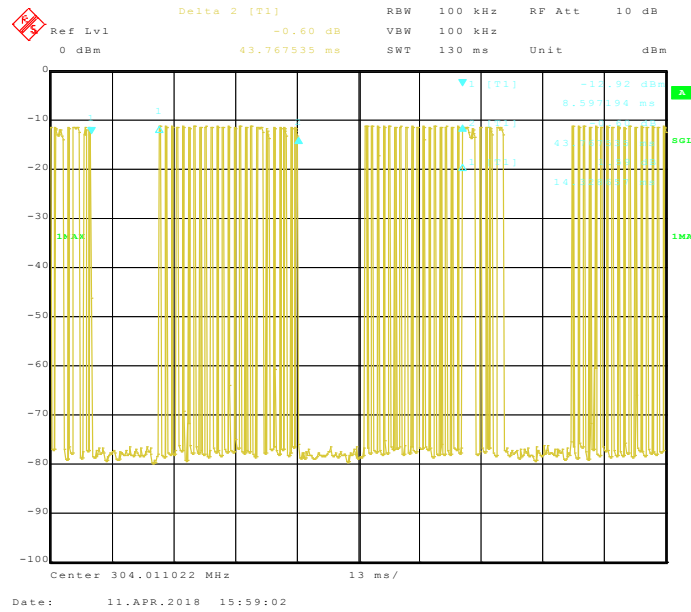
7.5 Duty Cycle

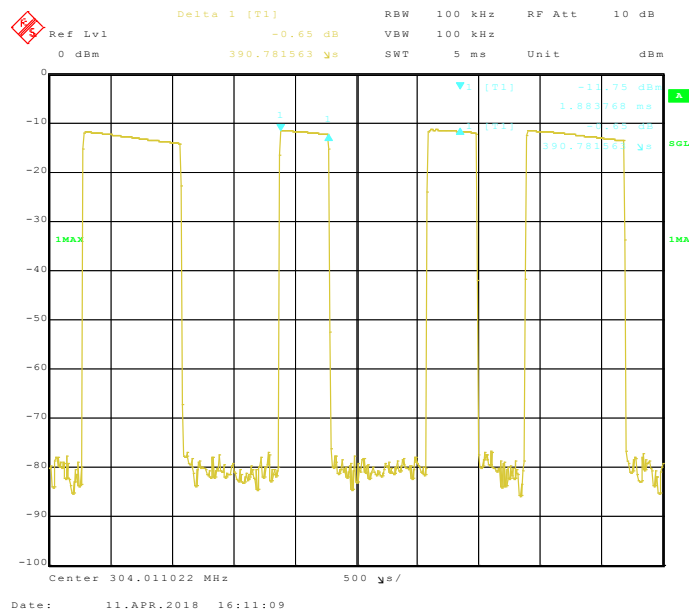
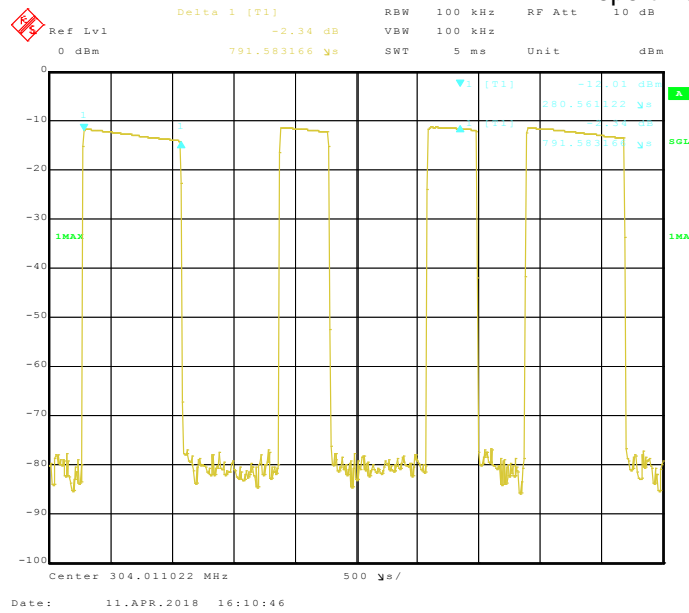
Test Requirement:	FCC Part15 C Section 15.231
Test Method:	ANSI C63.10:2013
Receiver setup:	RBW=100KHz, VBW=300KHz, span=0Hz, detector: Peak
Limit:	No dedicated limit specified in the Rules.
Test Procedure:	<ol style="list-style-type: none"> 1. Place the EUT on the table and set it in transmitting mode. 2. Remove the antenna from the EUT and then connect a low loss RF cable from the antenna port to the spectrum analyzer. 3. Set centre frequency of spectrum analyzer=operating frequency. 4. Set the spectrum analyzer as RBW=100kHz, VBW=100KHz, Span=0Hz, Adjust Sweep=100ms to obtain the "worst-case" pulse on time 5. Repeat above procedures until all frequency measured was complete.
Test setup:	 <p>The diagram illustrates the test setup. A Spectrum Analyzer is connected via a red cable to an E.U.T. (Equipment Under Test). Both are placed on a Non-Conducted Table. Below the table is a Ground Reference Plane.</p>
Test Instruments:	Refer to section 6.0 for details
Test mode:	Refer to section 5.2 for details
Test results:	Pass

Measurement data:

Calculate Formula: Duty cycle factor = $20 \log(\text{Duty cycle})$
Duty cycle = on time / 0.1 seconds or period, whichever is less
T on time = $0.391 \times 21 + 0.791 \times 3 = 10.6 \text{ms} = 0.0106 \text{(s)}$
T period = 0.0438(s)
Test data: Duty cycle = $0.0106 / 0.0438 = 24.20\%$
Duty cycle factor = $20 \log(0.242) = -12.32$

Test plots is below:





8 Test Setup Photo

Radiated Emission



9 EUT Constructional Details

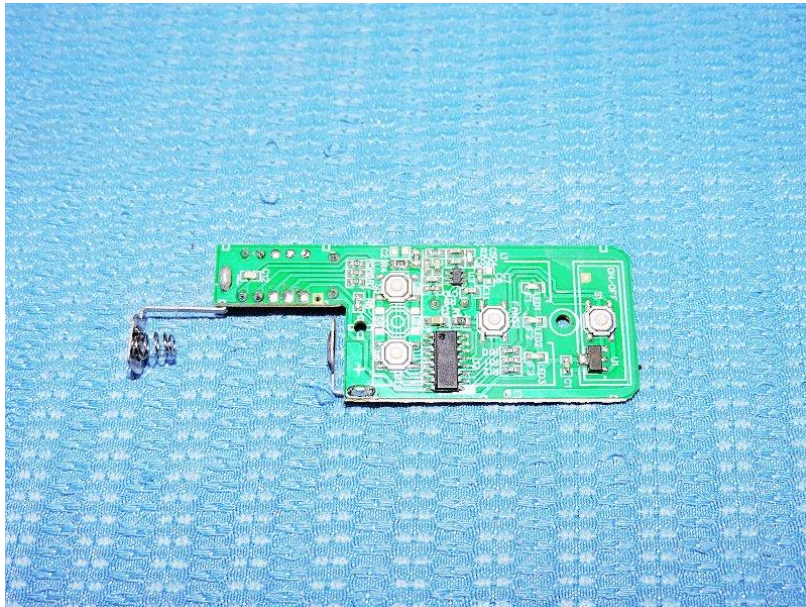
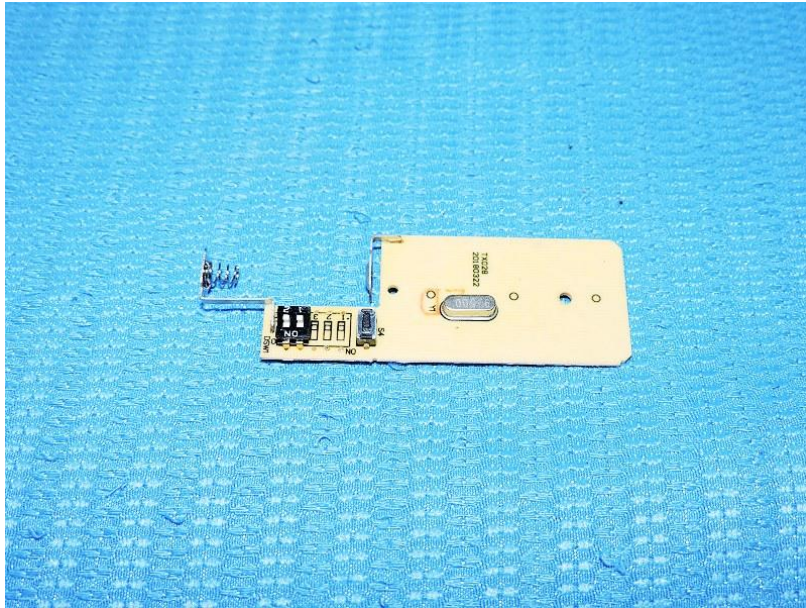


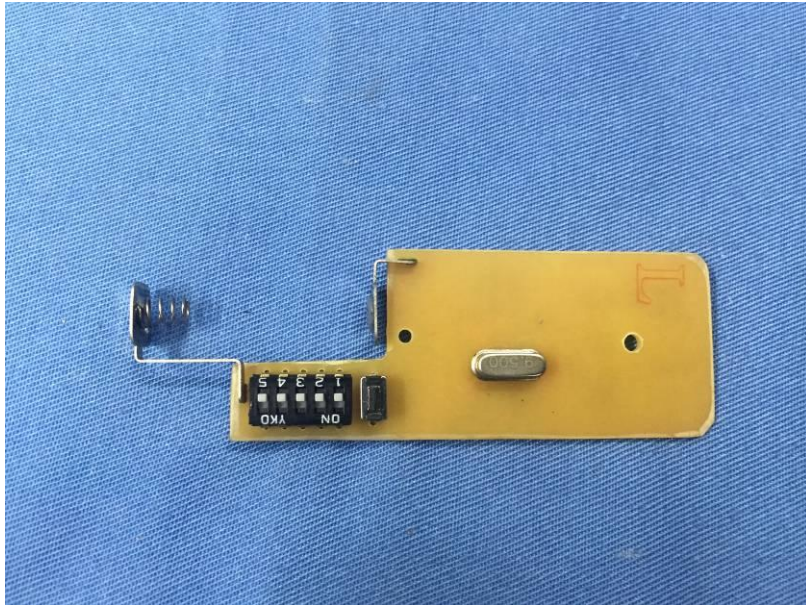
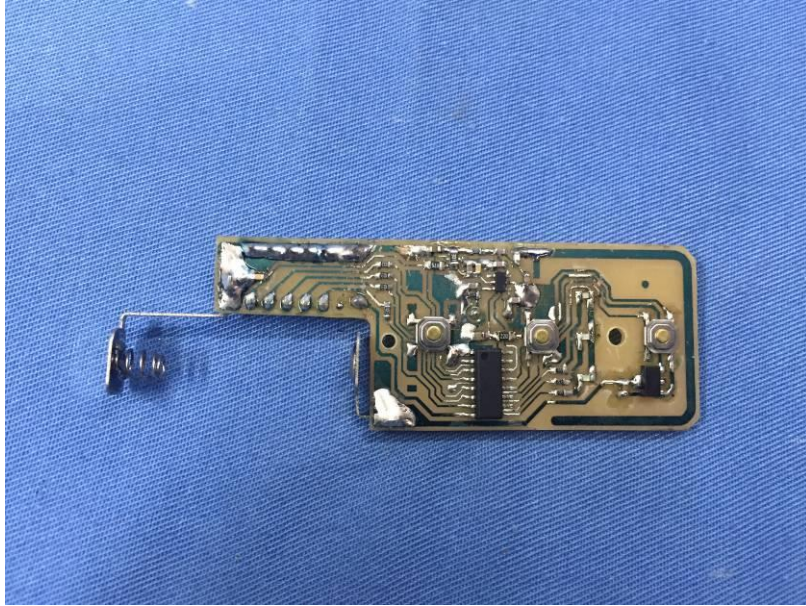


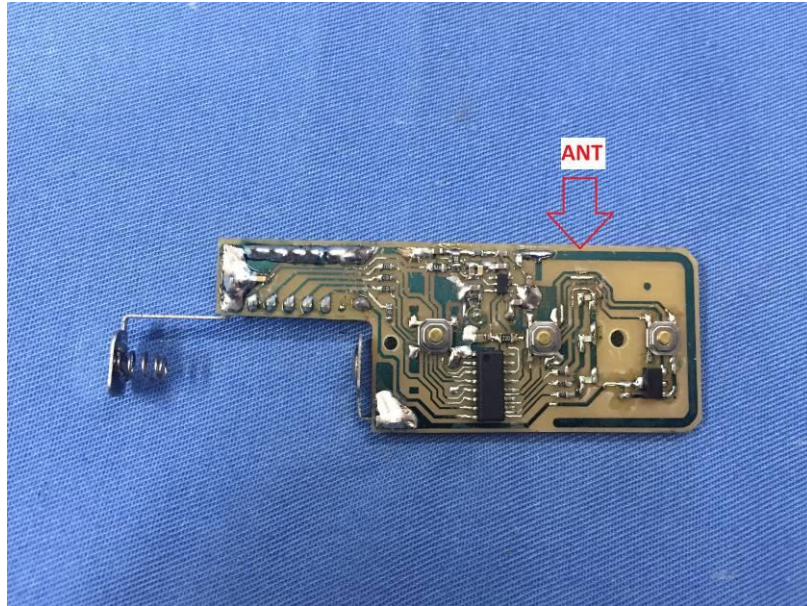












----- End -----