



25 Tubular Motor with Built-in Li-battery Instruction


Electronic type
ZH25EL-A1.0ER12



Battery


ZM25EL


Li-battery, Electronic radio, Built-in receiver Type





 Super silent design


 Power off and position memory function

 Wireless control:
RF remote, ZigBee, Bluetooth

 Built-in lithium battery

 Smart home connection

 Third position limit

 Inching / continuation move mode

Product model	Input voltage	Max current	Battery capacity	Torque	Rated power	Rated RPM	Running noise	Max load (use with 35mm tube)
ZM25EL-1.3/25	DC5V	1.4A	3200mAh/7.4V	1.3N.m	12W	25RPM	35-40dB	6KG
ZM25EL-0.8/25	DC5V	1A	3200mAh/7.4V	0.8N.m	8W	25RPM	35-40dB	4KG

Button Manual

USB Charging port

Motor set key

Up / open key

Stop key

Down / close key

Channel -

Channel +

Set key

Battery cover

LED Indicator

USB Charging port

Charging status: • Red LED constantly on

Full charged status: • Blue LED constantly on

Battery power switch

Remote Control Instruction

ZC175A-9 Multi channel remote

Screen

Up/open key

Stop key

Down/close key

Channel +

Set key

Battery cover

Short press: Inching reverse

Long press: Open 20%

Short press: Third position limit

Long press: Open 50%

Short press: Inching forward

Long press: Open 70%

Channel -

Channel number: Total 9 channels

Mode of operation: Keystroke

Coding mode: Rolling code

Emission frequency: 433.92MHz

Battery type: 1.5V 2 PCS of AAA battery

ZC173B-9 Multi channel remote

Screen

Up/open key

Stop key

Down/close key

Channel +

Set key

Battery cover

Open 20%

Open 50%

Open 70%

Channel -

Channel number: Total 9 channels

Mode of operation: Keystroke

Coding mode: Rolling code

Emission frequency: 433.92MHz

Battery type: 1.5V 2 PCS of AAA battery

ZC176-1 Single channel remote

Pilot lamp

Up / open key

Stop key

Down / close key

Inching forward

Set key

Battery cover

Open 20%

Open 50%

Open 70%

Inching reverse

Channel number: Total 1

Mode of operation: Keystroke

Coding mode: Rolling code

Emission frequency: 433.92MHz

Battery type: 1.5V 2 PCS of AAA battery

Statement of setting limit

Up limit setting

Third position limit setting

Down limit setting

※The up limit and the down limit must be set before the third limit is set, and the third limit will be deleted automatically when the up limit or down limit is deleted.

Charging power supply instructions

Power off

Power switch status: off

Power on

Power switch status: on

LOW BATTERY: The motor will raise an alarm with a sound "Di" to warn low battery. Please charge the device then avoid over-discharge to damage motor or abnormal operation.

Full charge the device for 6 hours before first use. Please charge the device at least 6 hours for every 3 months to prolong the battery life.

Recharging status: Red light always on when the USB cable plug in power and the motor. Full recharged: When the USB cable plug in power and the motor, fully recharged, the red light goes off.

DC 5V/2A Power adapter (Optional)

Input : DC 5V/2A

5V Solar charging board (Optional)

DC 5V

※ When charging the motor, it is necessary to use the factory-configured charging cable to charge.

Operation Instructions

- Press the "Up / open key", the blind up.
- Press the "Down / close key", the blind down.
- Press the "Stop key", the blind stop running.
- Long press the "Stop key" for 3 seconds, the blind automatically runs to third position (Only works when the third position limit is set).

Notice

- Avoid direct sunlight, outdoor or high-temperature uses.
- Do not strike or drop any parts; do not disassemble or maintain by yourselves.
- Do not use volatile chemicals (such as diluent or benzene) which may cause fire or other functional problems.
- Each type of motor matches with corresponding transmission boxes. Please do not install devices with external forces.
- Please connect the wire according to wiring diagram.
- Water drop is not allowed on the main parts, which may cause electric leakage or fire, even worse for electric shock on users.

Remote Control and Network Setting Manual

These operations only work for the remote control within the effective control distance, and the motor is in the power-on state, otherwise it doesn't work.

Connection setting for motor and remote control

Choose one of the channel to connect with the motor by "+" or "-" button.

Press the motor's "Set key" once, the motor with a "Di" sound.

Press the "Up/open key" once within 5 seconds.

Motor successfully set with a "Di" sound.

To add extra or multiple remote

Choose the channel which is connected to the motor by the remote control "+" or "-" key.

Press the remote control "Set key" 6 times, the screen shows 6.

Press the "Up/open key" setting the motor enters the waiting connection with the remote control state.

Next in less than 5 seconds press the "Up/open key" on the extra remote control that needs to be added.

Motor successfully set with a "Di" sound.

Network configuration of motor (Only for the smart motor)

Method 1:

Choose the channel which is connected to the motor by the remote control "+" or "-" key.

Press the remote control "Set key" 6 times, the screen shows 6.

Press the "Stop key" in less than 3 seconds.

After a "Di" sound, the motor has entered pairing mode.

Method 2:

Press the motor's "Set key" 3 times in less than 5 seconds.

After a "Di" sound, the motor has entered pairing mode.

5

Setting limit

First running the motor to the limit position you want to set and pause, and then perform the following operations. If the motor has travel limit already, you need to clear the original travel before reset it.

Up limit setting

Press the remote control "Set key" once, the screen shows 1.

Press the "Up/open key" in less than 3 seconds.

Motor successfully set with a "Di" sound.

Down limit setting

Press the remote control "Set key" once, the screen shows 1.

Press the "Down/close key" in less than 3 seconds.

Motor successfully set with a "Di" sound.

Third position limit setting

Press the remote control "Set key" once, the screen shows 1.

Press the "Stop key" in less than 3 seconds.

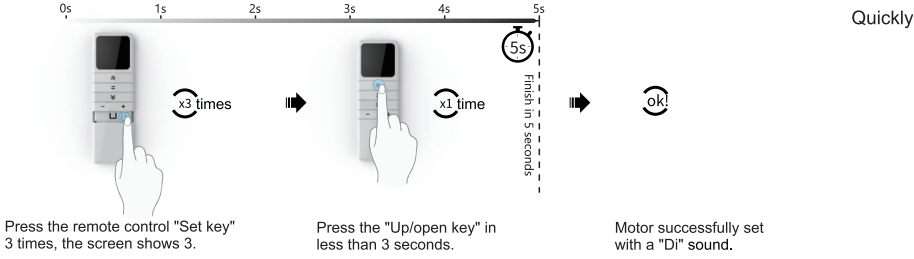
Motor successfully set with a "Di" sound.

6

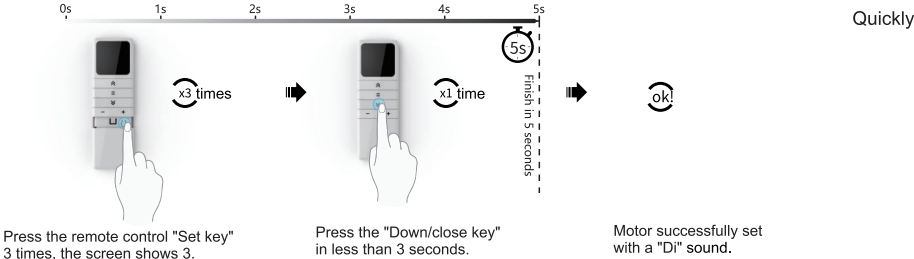
Remove limit

⚠ You can delete the limit at any position.

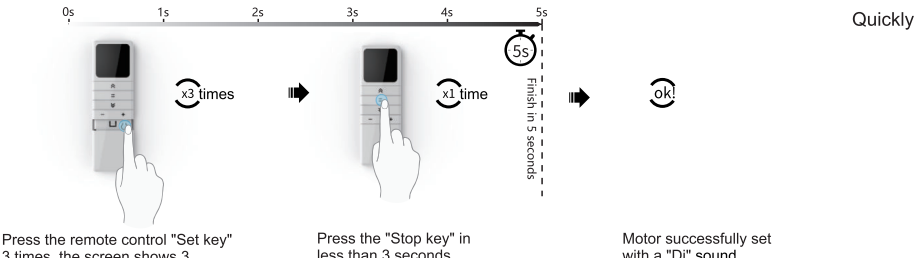
Delete up limit



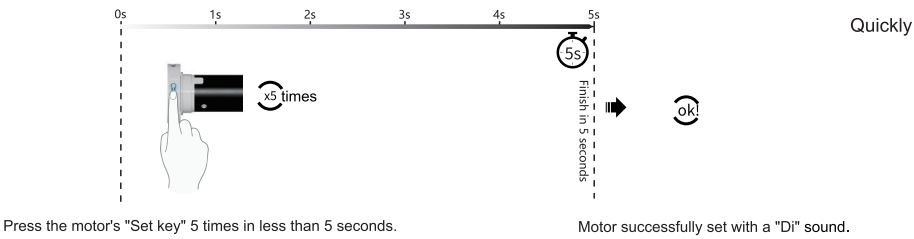
Delete down limit



Delete third position limit



The limit back to factory mode (Delete all the limits)

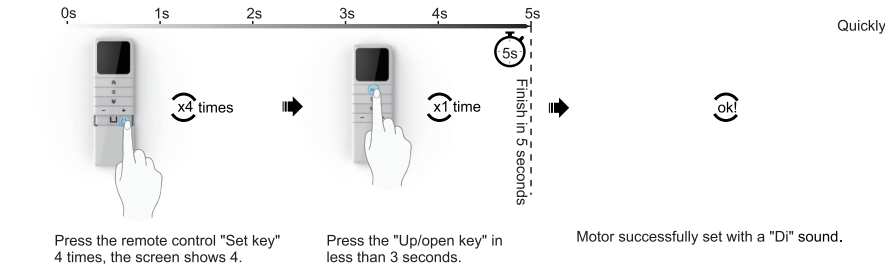


7

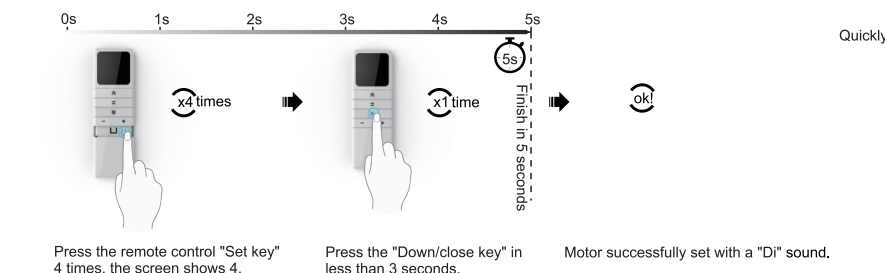
Other functions

⚠ The following functions can be set as personal needs.

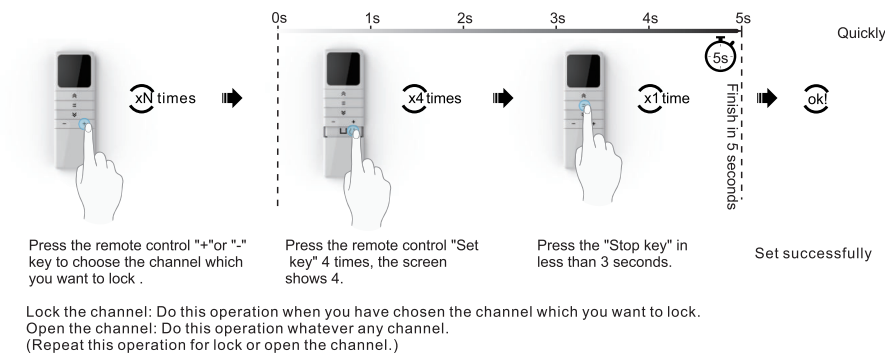
Change the remote control direction ⚠ When the control direction is opposite, the remote control can be used to switch the direction, and you can repeat the operation to switch.



Inching or continuation move action ⚠ When the inching action is needed, perform the following operations. (Repeat this operation can switch back to the continuation move mode.)



Lock or open the remote channel ⚠ If you need to hide the extra channels, you can perform the following operations. (Repeat the operation to unlock channel.)

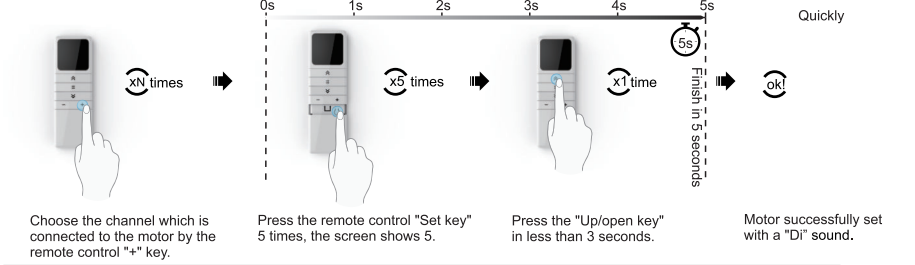


8

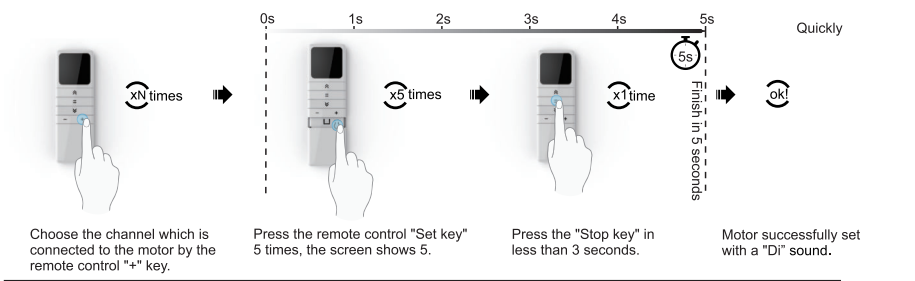
Delete the remote control from the motor

⚠ These operations only work for the remote control within the effective control distance, and the motor is in the power-on state, otherwise it doesn't work.

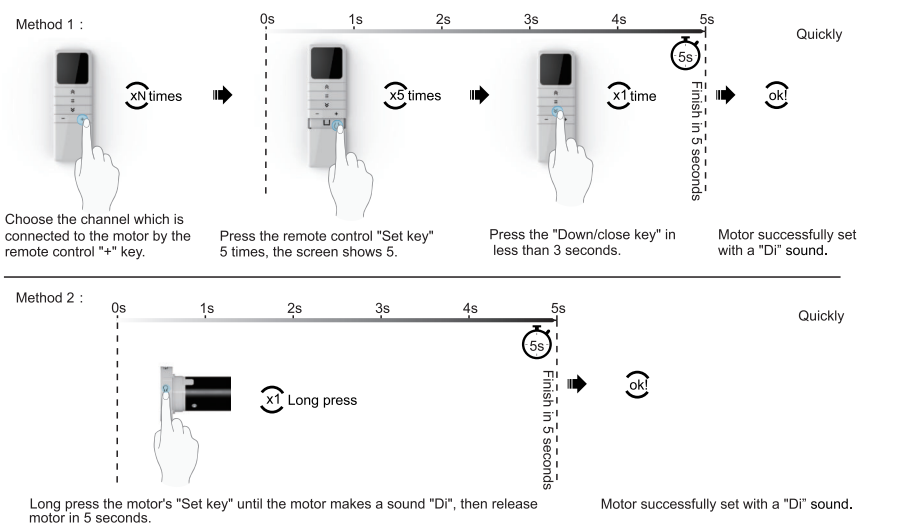
Delete the remote current channel from the motor



Delete current remote from the motor To cancel the connection between the motor and current remote all channels.



Delete all remote control from the motor



9

App User Manual (Zigbee / Bluetooth version motor)

Notice: If you want to connect the Wi-Fi version, please check the instruction connection between the smart Wi-Fi converter and the motor.

Network configuration of motor

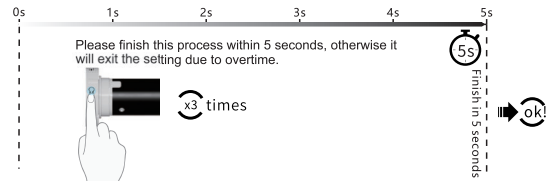
1 Download the APP

Scan the QR code as below, or search "Smart life" in any App store, to download the App. Then please add the ZigBee or Bluetooth gateway into App first.



2 Motor enters pairing App configuration state

⚠ This operation can also be performed when the gateway cannot find the device or the network needs to be reconfigured.

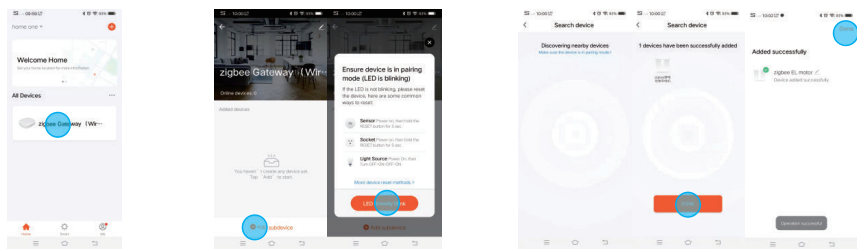


If the configuration fails, please reconnect once.

(The premise of using method 2 is that the remote control has been connected to the motor.)

3 App setting

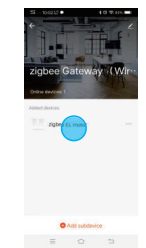
⚠ Please follow these steps to configure the motor.



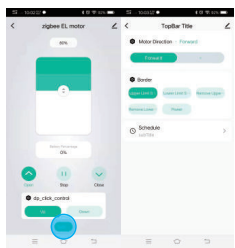
1. Please make sure that the ZigBee or Bluetooth gateway is connected to the App, and then enter the homepage to choose the gateway which you want to connect.

2. Under the Zigbee page, "Add subdevice".

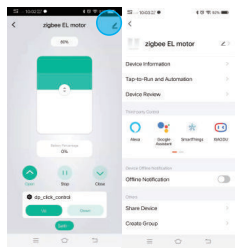
3. The App will now search for the device and register to your account. Choose the curtain motor to connect, then reset the Device Name.



4. Back to the Zigbee page, choose the motor which you just added.



5. Enter the motor control page, now you can control the motor by App as well. Enter the motor setting page, can set the motor limit, timing control, change the motor direction, and so on.



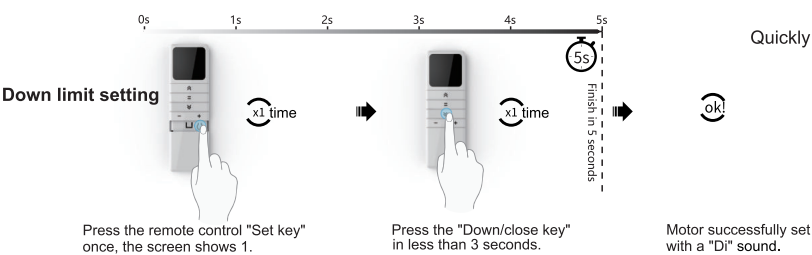
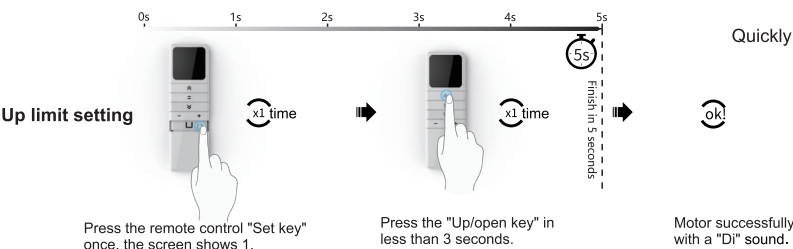
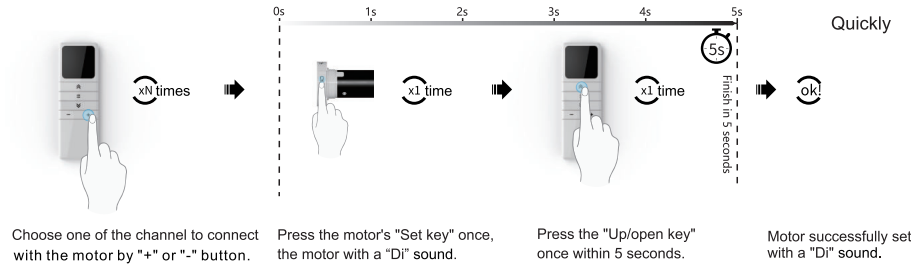
6. On the motor control page, click "⚙" in the upper right corner to enter the motor technical parameter setting page, you can check the device information, change the name, and so on.

10

App User Manual (Matter version motor)

⚠ If the motor travel limit is already set, you can proceed directly to network configuration.

Connection setting for motor and remote control



FCC Warning Statement:

Changes or modifications to this unit not expressly approved by the party responsible for compliance could void the user's authority to operate the equipment. This equipment has been tested and found to comply with the limits for a Class B digital device, pursuant to Part 15 of the FCC Rules. These limits are designed to provide reasonable protection against harmful interference in a residential installation. This equipment generates, uses and can radiate radio frequency energy and, if not installed and used in accordance with the instructions, may cause harmful interference to radio communications.

However, there is no guarantee that interference will not occur in a particular installation. If this equipment does cause harmful interference to radio or television reception, which can be determined by turning the equipment off and on, the user is encouraged to try to correct the interference by one or more of the following measures:

- Reorient or relocate the receiving antenna.
- Increase the separation between the equipment and receiver.
- Connect the equipment into an outlet on a circuit different from that to which the receiver is connected.
- Consult the dealer or an experienced radio/TV technician for help.

This device complies with Part 15 of the FCC Rules. Operation is subject to the following two conditions: (1) this device may not cause harmful interference, and (2) this device must accept any interference received, including interference that may cause undesired operation.

FCC Radiation Exposure Statement

The device has been evaluated to meet general RF exposure requirement. The device can be used in portable exposure condition without restriction.

11