

## Antenna specification

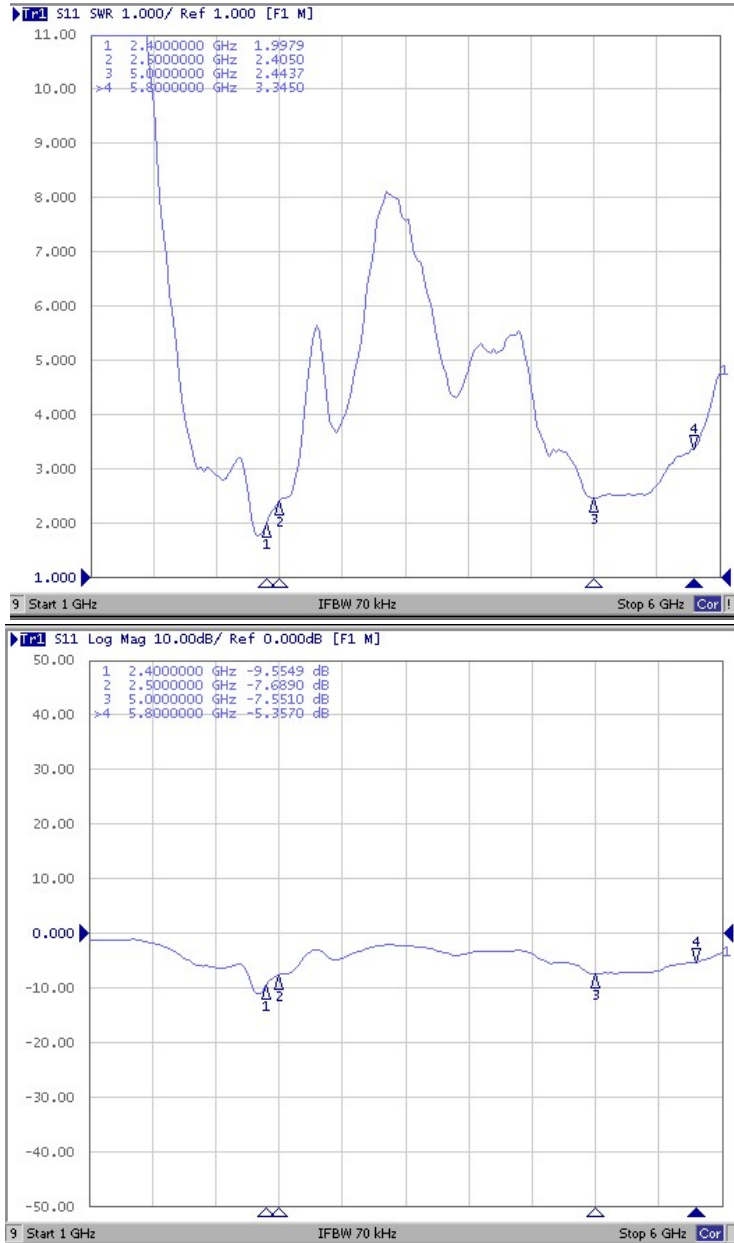
	2.4G~5.8G WIFI antenna
--	------------------------

### Specification

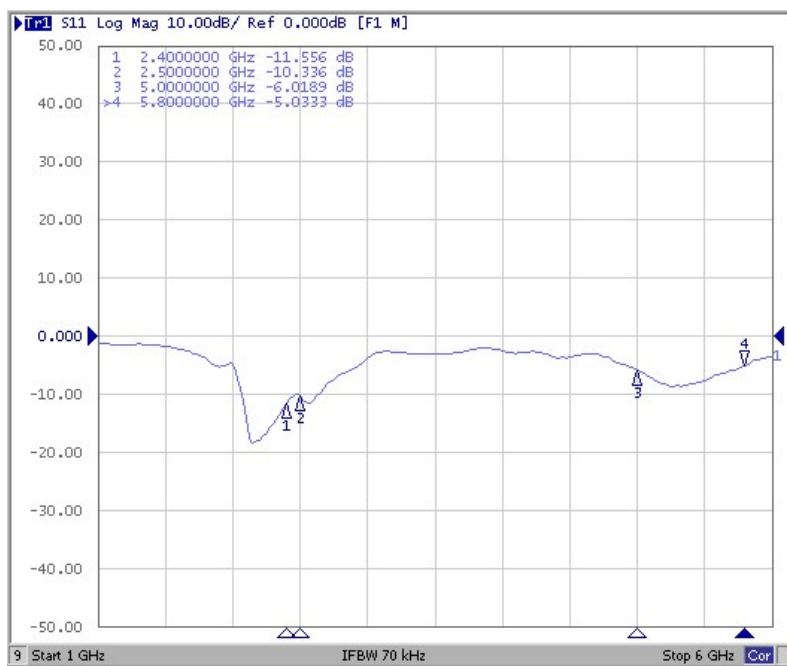
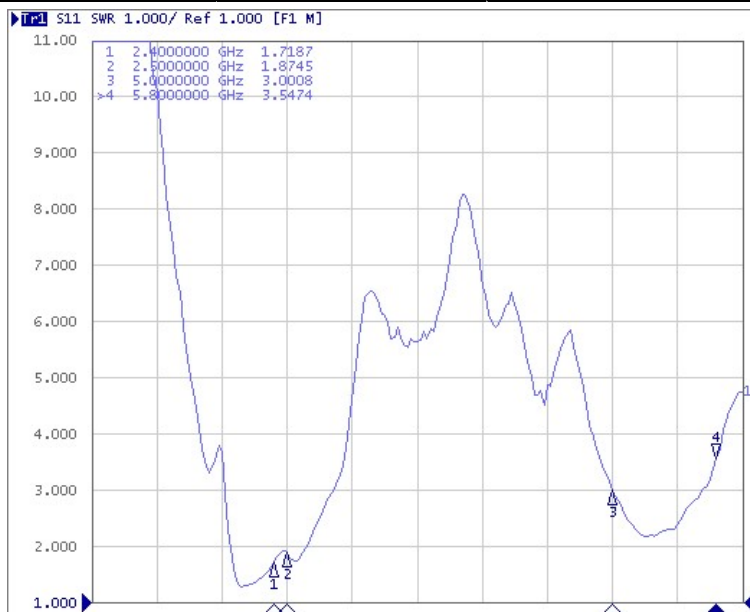
#### 1. Electrical property parameter

- Frequency Range.....2400MHz ~2500MHz
- VSWR..... <3
- Efficiency..... Max59.37%
- Peak Gain..... Max4.76dBi
- Polarization..... Linear
- Input Impedance..... 50Ω

Band	WIFI ANT 1			
	2400	2500	5000	5800
R. L (dB)	-9.5	-7.6	-5.0	-5.3
VSWR	2.4	2.5	5.0	5.8



Band	WIFI ANT 2			
	2400	2500	5000	5800
R. L (dB)	-11.5	-10.3	-6.0	-5.0
VSWR	1.7	1.8	3.0	3.5



## WiFi antenna gain efficiency :

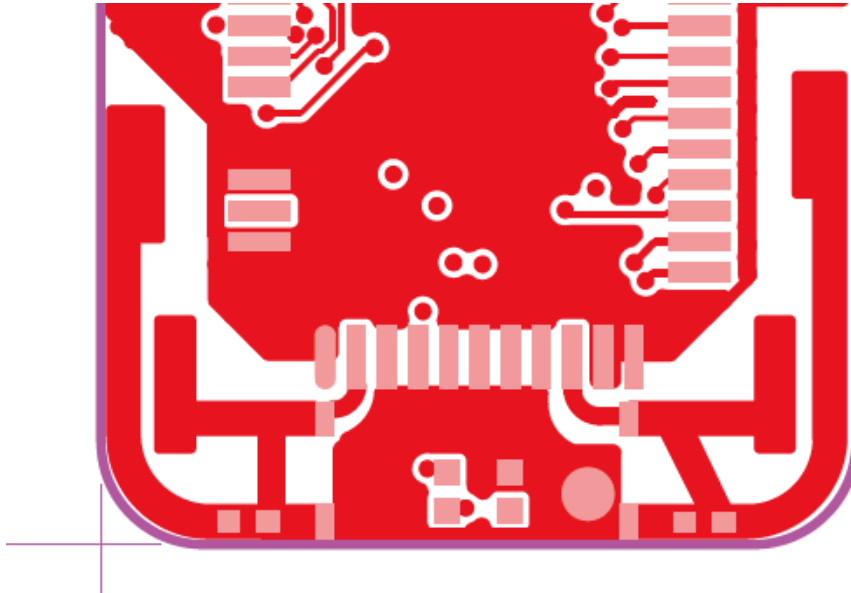
<b>FETUKEJI ANT1</b>											
Frequency ID	1	2	3	4	5	6	7	8	9	10	11
Frequency (MHz)	2400.0	2410.0	2420.0	2430.0	2440.0	2450.0	2460.0	2470.0	2480.0	2490.0	2500.0
Point Values											
Ant. Port Input Pwr. (dBm)	0.00	0.00	0.00	0.00	0.00	0.00	0.00	0.00	0.00	0.00	0.00
<b>Tot. Rad. Pwr. (dBm)</b>	<b>-3.61</b>	<b>-3.57</b>	<b>-3.50</b>	<b>-3.43</b>	<b>-3.36</b>	<b>-3.26</b>	<b>-3.19</b>	<b>-3.16</b>	<b>-3.15</b>	<b>-3.04</b>	<b>-3.03</b>
Peak EIRP (dBm)	1.72	1.62	1.57	1.61	1.76	2.01	2.28	2.49	2.64	2.79	2.75
Directivity (dBi)	5.33	5.19	5.06	5.04	5.11	5.28	5.47	5.64	5.79	5.83	5.78
Efficiency (dB)	-3.61	-3.57	-3.50	-3.43	-3.36	-3.26	-3.19	-3.16	-3.15	-3.04	-3.03
Efficiency (%)	43.60	43.90	44.70	45.40	46.20	47.20	48.00	48.40	48.40	49.60	49.70
Gain (dBi)	1.72	1.62	1.57	1.61	1.76	2.01	2.28	2.49	2.64	2.79	2.75
NHPRP $\pm\pi/4$ (dBm)	-4.71	-4.69	-4.62	-4.55	-4.48	-4.38	-4.29	-4.24	-4.21	-4.09	-4.08
NHPRP $\pm\pi/6$ (dBm)	-6.29	-6.27	-6.19	-6.11	-6.01	-5.89	-5.81	-5.77	-5.76	-5.64	-5.63
NHPRP $\pm\pi/8$ (dBm)	-7.57	-7.55	-7.47	-7.37	-7.25	-7.13	-7.06	-7.05	-7.06	-6.95	-6.95
Upper Hem. PRP (dBm)	-8.48	-8.47	-8.43	-8.41	-8.38	-8.36	-8.38	-8.44	-8.45	-8.28	-8.17
Lower Hem. PRP (dBm)	-5.32	-5.28	-5.17	-5.08	-5.00	-4.87	-4.75	-4.68	-4.67	-4.59	-4.62
Upper Hem. PRP (%)	14.18	14.23	14.34	14.41	14.53	14.60	14.52	14.33	14.30	14.85	15.25
Lower Hem. PRP (%)	29.40	29.67	30.38	31.03	31.65	32.56	33.46	34.02	34.12	34.79	34.48

<b>FETUKEJI ANT1</b>															
Frequency ID	1	2	3	4	5	6	7	8	9	10	11	12	13	14	15
Frequency (MHz)	5150.0	5200.0	5250.0	5300.0	5350.0	5400.0	5450.0	5500.0	5550.0	5600.0	5650.0	5700.0	5750.0	5800.0	5850.0
Point Values															
Ant. Port Input Pwr. (dBm)	0.00	0.00	0.00	0.00	0.00	0.00	0.00	0.00	0.00	0.00	0.00	0.00	0.00	0.00	0.00
<b>Tot. Rad. Pwr. (dBm)</b>	<b>-8.66</b>	<b>-8.51</b>	<b>-8.40</b>	<b>-8.24</b>	<b>-8.89</b>	<b>-9.16</b>	<b>-8.77</b>	<b>-8.85</b>	<b>-8.57</b>	<b>-8.09</b>	<b>-8.14</b>	<b>-7.74</b>	<b>-7.22</b>	<b>-7.22</b>	<b>-7.00</b>
Peak EIRP (dBm)	-4.56	-4.45	-3.94	-2.79	-3.31	-3.84	-2.43	-2.38	-2.16	-1.35	-1.41	-1.30	-0.51	-0.67	-0.99
Directivity (dBi)	4.10	4.06	4.46	5.45	5.58	5.32	6.33	6.47	6.40	6.74	6.73	6.45	6.71	6.55	6.01
Efficiency (dB)	-8.66	-8.51	-8.40	-8.24	-8.89	-9.16	-8.77	-8.85	-8.57	-8.09	-8.14	-7.74	-7.22	-7.22	-7.00
Efficiency (%)	13.60	14.10	14.50	15.00	12.90	12.10	13.30	13.00	13.90	15.50	15.40	16.80	19.00	19.00	19.90
Gain (dBi)	-4.56	-4.45	-3.94	-2.79	-3.31	-3.84	-2.43	-2.38	-2.16	-1.35	-1.41	-1.30	-0.51	-0.67	-0.99
NHPRP $\pm\pi/4$ (dBm)	-10.09	-9.97	-9.87	-9.66	-10.41	-10.86	-10.34	-10.42	-10.16	-9.55	-9.68	-9.39	-8.84	-8.85	-8.63
NHPRP $\pm\pi/6$ (dBm)	-11.58	-11.49	-11.44	-11.14	-11.94	-12.54	-11.86	-11.93	-11.69	-10.96	-11.08	-10.86	-10.33	-10.41	-10.23
NHPRP $\pm\pi/8$ (dBm)	-12.67	-12.63	-12.59	-12.23	-13.07	-13.75	-12.91	-12.95	-12.73	-11.95	-12.10	-11.89	-11.34	-11.46	-11.32
Upper Hem. PRP (dBm)	-12.56	-12.36	-12.53	-12.64	-13.15	-13.42	-13.08	-13.17	-13.13	-12.81	-12.80	-12.36	-11.84	-11.82	-11.60
Lower Hem. PRP (dBm)	-10.92	-10.82	-10.51	-10.20	-10.93	-11.19	-10.78	-10.86	-10.44	-9.89	-9.95	-9.58	-9.06	-9.07	-8.86
Upper Hem. PRP (%)	5.54	5.81	5.58	5.45	4.84	4.55	4.92	4.82	4.86	5.24	5.25	5.81	6.54	6.57	6.92
Lower Hem. PRP (%)	8.08	8.27	8.89	9.56	8.07	7.60	8.36	8.21	9.04	10.27	10.11	11.01	12.42	12.40	13.01

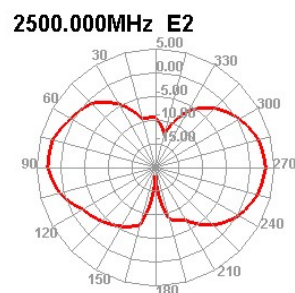
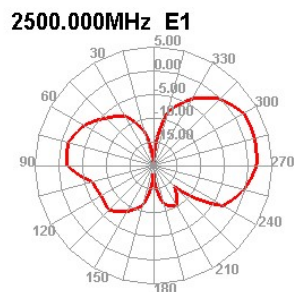
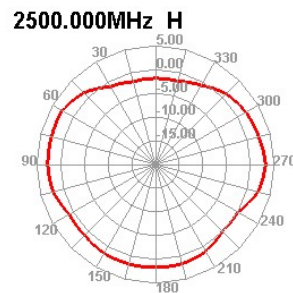
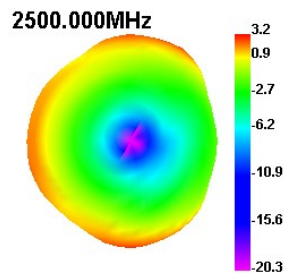
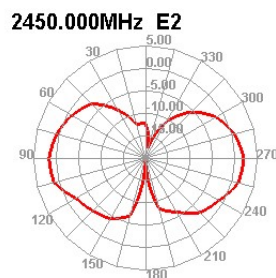
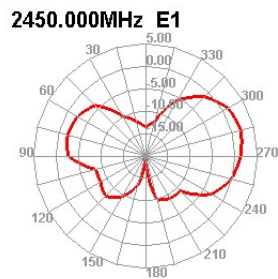
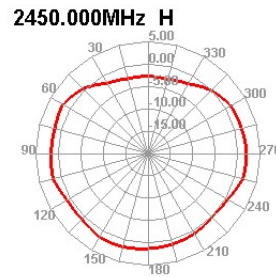
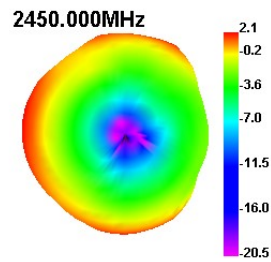
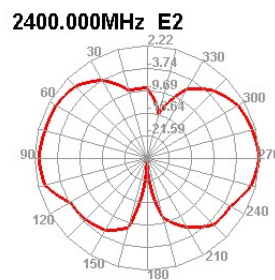
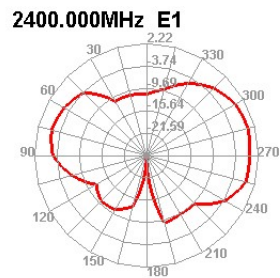
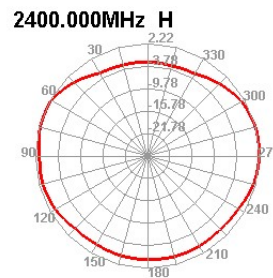
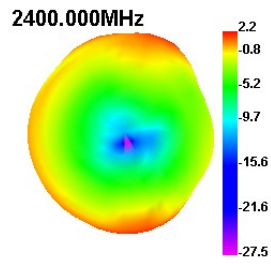
<b>FETUKEJI</b>											
<b>ANT2</b>											
Frequency ID	1	2	3	4	5	6	7	8	9	10	11
Frequency (MHz)	2400.0	2410.0	2420.0	2430.0	2440.0	2450.0	2460.0	2470.0	2480.0	2490.0	2500.0
Point Values											
Ant. Port Input Pwr. (dBm)	0.00	0.00	0.00	0.00	0.00	0.00	0.00	0.00	0.00	0.00	0.00
Tot. Rad. Pwr. (dBm)	-4.91	-4.81	-4.63	-4.50	-4.33	-4.16	-3.98	-3.88	-3.83	-3.68	-3.63
Peak EIRP (dBm)	-0.36	-0.12	0.09	0.14	0.23	0.43	0.72	0.93	0.99	1.04	0.93
Directivity (dBi)	4.55	4.69	4.72	4.64	4.55	4.59	4.70	4.81	4.82	4.72	4.57
Efficiency (dB)	-4.91	-4.81	-4.63	-4.50	-4.33	-4.16	-3.98	-3.88	-3.83	-3.68	-3.63
Efficiency (%)	32.30	33.00	34.40	35.50	36.90	38.40	40.00	40.90	41.40	42.90	43.30
Gain (dBi)	-0.36	-0.12	0.09	0.14	0.23	0.43	0.72	0.93	0.99	1.04	0.93
NHPRP $\pm$ Pi/4 (dBm)	-6.05	-6.00	-5.86	-5.75	-5.59	-5.44	-5.27	-5.18	-5.10	-4.92	-4.87
NHPRP $\pm$ Pi/6 (dBm)	-7.49	-7.48	-7.36	-7.24	-7.05	-6.88	-6.71	-6.62	-6.53	-6.33	-6.28
NHPRP $\pm$ Pi/8 (dBm)	-8.62	-8.63	-8.52	-8.37	-8.15	-7.96	-7.79	-7.72	-7.62	-7.42	-7.39
Upper Hem. PRP (dBm)	-9.38	-9.27	-9.10	-8.95	-8.76	-8.64	-8.57	-8.58	-8.52	-8.28	-8.13
Lower Hem. PRP (dBm)	-6.82	-6.73	-6.55	-6.43	-6.27	-6.07	-5.83	-5.69	-5.63	-5.52	-5.54
Upper Hem. PRP (%)	11.53	11.82	12.30	12.73	13.31	13.67	13.91	13.88	14.07	14.86	15.39
Lower Hem. PRP (%)	20.78	21.22	22.14	22.75	23.61	24.70	26.12	27.00	27.36	28.05	27.92

<b>FETUKEJI</b>															
<b>ANT2</b>															
Frequency ID	1	2	3	4	5	6	7	8	9	10	11	12	13	14	15
Frequency (MHz)	5150.0	5200.0	5250.0	5300.0	5350.0	5400.0	5450.0	5500.0	5550.0	5600.0	5650.0	5700.0	5750.0	5800.0	5850.0
Point Values															
Ant. Port Input Pwr. (dBm)	0.00	0.00	0.00	0.00	0.00	0.00	0.00	0.00	0.00	0.00	0.00	0.00	0.00	0.00	0.00
Tot. Rad. Pwr. (dBm)	-6.96	-7.16	-7.11	-7.17	-7.95	-8.46	-8.40	-8.41	-8.07	-7.68	-7.79	-7.72	-7.59	-7.76	-7.79
Peak EIRP (dBm)	-1.02	-1.07	-0.94	-1.08	-2.13	-2.35	-2.34	-2.52	-2.08	-1.89	-1.70	-1.64	-1.39	-1.62	-1.89
Directivity (dBi)	5.94	6.09	6.16	6.09	5.82	6.11	6.06	5.89	5.98	5.79	6.09	6.08	6.20	6.14	5.90
Efficiency (dB)	-6.96	-7.16	-7.11	-7.17	-7.95	-8.46	-8.40	-8.41	-8.07	-7.68	-7.79	-7.72	-7.59	-7.76	-7.79
Efficiency (%)	20.10	19.30	19.50	19.20	16.00	14.30	14.50	14.40	15.60	17.10	16.60	16.90	17.40	16.70	16.60
Gain (dBi)	-1.02	-1.07	-0.94	-1.08	-2.13	-2.35	-2.34	-2.52	-2.08	-1.89	-1.70	-1.64	-1.39	-1.62	-1.89
NHPRP $\pm$ Pi/4 (dBm)	-8.53	-8.74	-8.76	-8.83	-9.68	-10.29	-10.03	-10.03	-9.74	-9.34	-9.55	-9.54	-9.31	-9.52	-9.61
NHPRP $\pm$ Pi/6 (dBm)	-10.28	-10.45	-10.55	-10.57	-11.56	-12.31	-11.84	-11.79	-11.48	-11.05	-11.32	-11.34	-11.13	-11.38	-11.48
NHPRP $\pm$ Pi/8 (dBm)	-11.81	-11.99	-12.16	-12.04	-13.14	-13.95	-13.25	-13.25	-12.95	-12.50	-12.83	-12.82	-12.61	-12.87	-12.98
Upper Hem. PRP (dBm)	-11.68	-11.55	-11.55	-11.55	-11.92	-12.92	-13.28	-12.88	-12.41	-11.87	-11.65	-11.68	-11.90	-11.98	-11.98
Lower Hem. PRP (dBm)	-8.75	-9.12	-9.04	-9.13	-10.17	-10.38	-10.11	-10.33	-10.06	-9.76	-10.09	-9.95	-9.61	-9.82	-9.87
Upper Hem. PRP (%)	6.79	7.00	7.00	7.00	6.43	5.10	4.70	5.15	5.74	6.50	6.85	6.80	6.45	6.33	6.34
Lower Hem. PRP (%)	13.34	12.25	12.47	12.21	9.61	9.16	9.75	9.27	9.86	10.56	9.79	10.12	10.94	10.42	10.30

product feature :

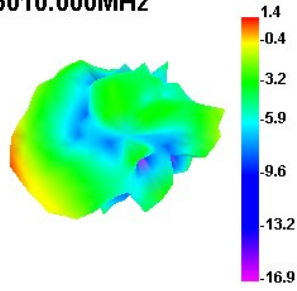


# Apple chart : ANT1- 2.4GWiFi

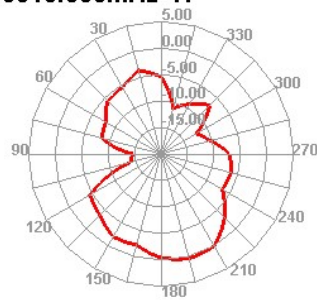


# ANT1-5.8G WiFi

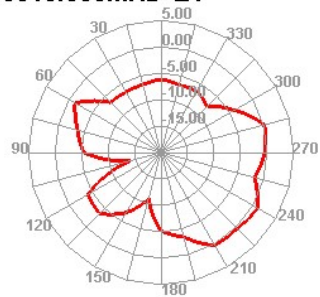
5010.000MHz



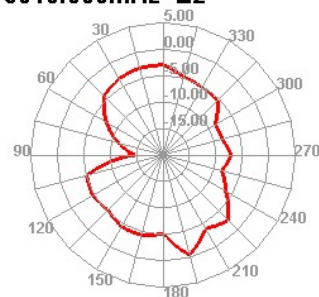
5010.000MHz H



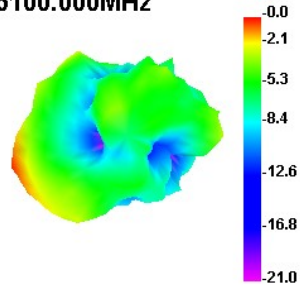
5010.000MHz E1



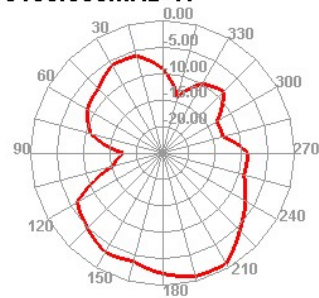
5010.000MHz E2



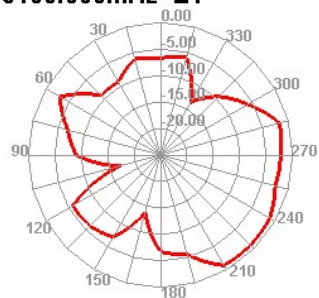
5100.000MHz



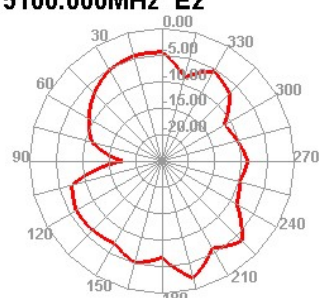
5100.000MHz H



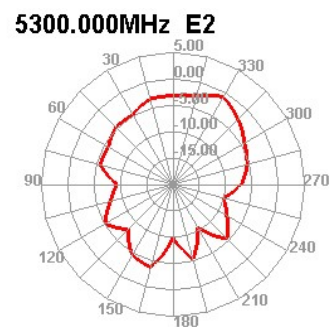
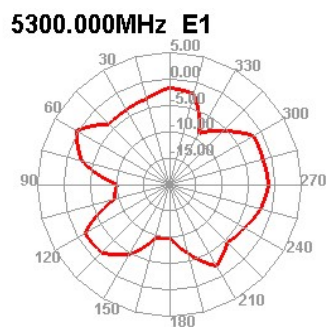
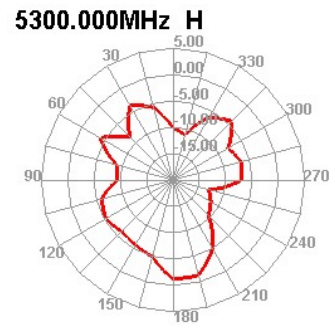
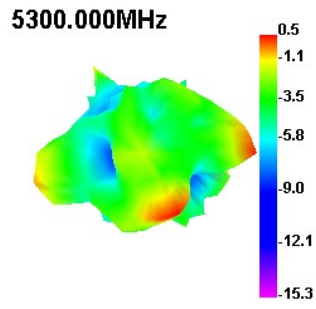
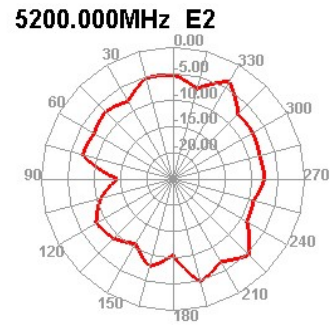
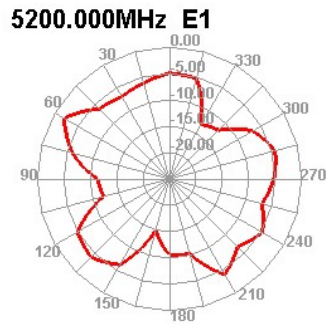
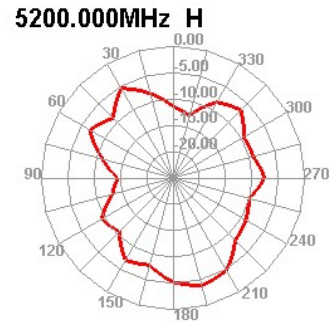
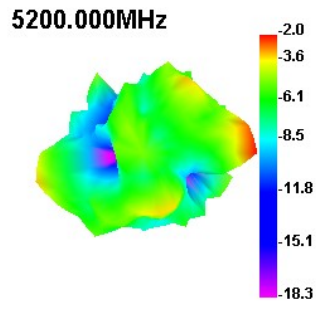
5100.000MHz E1



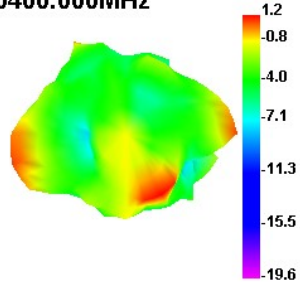
5100.000MHz E2



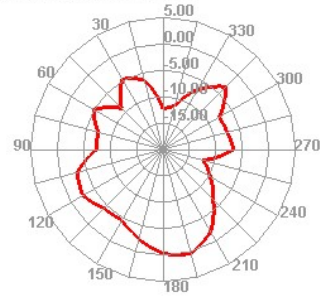




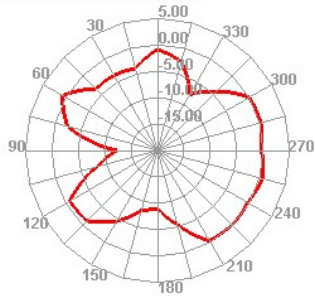
5400.000MHz



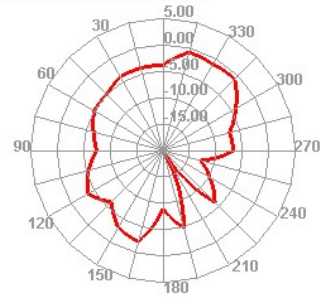
5400.000MHz H



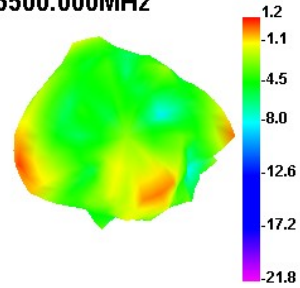
5400.000MHz E1



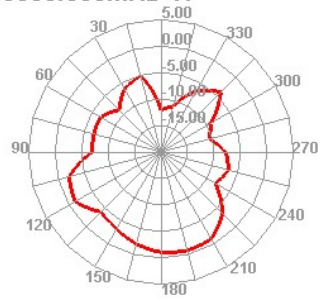
5400.000MHz E2



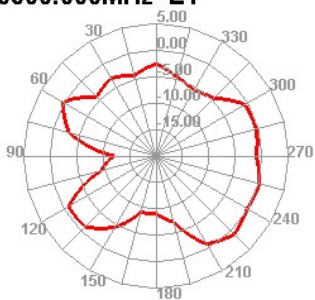
5500.000MHz



5500.000MHz H



5500.000MHz E1



5500.000MHz E2

