

## LED Octagonal softbox light with Honeycomb Grid

### User Manual

#### Specifications

【High brightness】 Powerful 120W LED octagon softbox with 720 pcs LED beads ,the brightness up to 11000 lumens.

【Integrated softbox design】 the softbox ' size is 95cm, made of high-quality PET fabric and reflective material, the integrated design,makes the installation more convenient and simple.

【Two dimming methods】 It can be controlled via the button on or a IR remote control

【High Quality light stand】 It made of aluminum alloy, thickened tube , its diameter is 30mm-26mm-22mm. Height can be freely adjusted between 100cm-280cm with the screw knobs

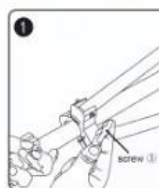
#### Package List

- 2 x 120W LED Octagon softbox light
- 2 x Honeycomb Grid cover
- 2 x Carrying bag for softbox
- 2 x 280CM light stand
- 2 x Power adapter
- 1 x Remote control
- 1 x Oxford storage bag for the whole kit

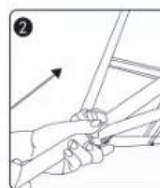
#### Warm prompt

If you have any trouble in setting up the product, please feel free to email us with your order number to senyeah11@163.com,we will do our best to fix your problems as soon as we can.

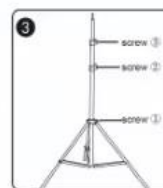
#### Installation



STEP 1 Loosen the screw ① on the light stand



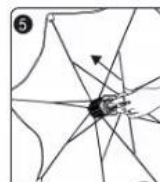
STEP 2 Push along the arrow to open, then lock the screw ②



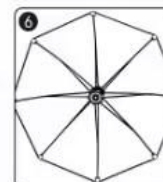
STEP 3 Use screw ② and ③ to adjust the height



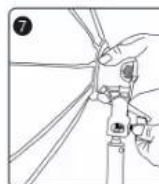
STEP 4 Loosen the knob on the softbox, turn 90° and lock it



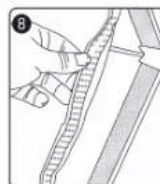
STEP 5 Press the lamp holder



STEP 6 When you hear "click," the light box opens



STEP 7 Loosen the screw on the softbox, put it on the stand, and lock it



STEP 8 Put the soft cloth on the light box with Velcro



STEP 9 The LED softbox is installed

This device complies with part 15 of the FCC Rules. Operation is subject to the following two conditions: (1) This device may not cause harmful interference, and (2) this device must accept any interference received, including interference that may cause undesired operation.

NOTE: This equipment has been tested and found to comply with the limits for a Class B digital device, pursuant to Part 15 of the FCC Rules. These limits are designed to provide reasonable protection against harmful interference in a residential installation. This equipment generates, uses and can radiate radio frequency energy and, if not installed and used in accordance with the instructions, may cause harmful interference to radio communications. However, there is no guarantee that interference will not occur in a particular installation. If this equipment does cause harmful interference to radio or television reception, which can be determined by turning the equipment off and on, the user is encouraged to try to correct the interference by one or more of the following measures:

- Reorient or relocate the receiving antenna.
- Increase the separation between the equipment and receiver.
- Connect the equipment into an outlet on a circuit different from that to which the receiver is connected.
- Consult the dealer or an experienced radio/TV technician for help.

Changes or modifications not expressly approved by the party responsible for compliance could void the user's authority to operate the equipment.

The device has been evaluated to meet general RF exposure requirement. The device can be used in portable exposure condition without restriction.