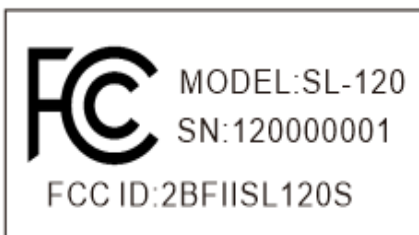


# **DUEWOT**

[www.duewot.com](http://www.duewot.com)

Model: SL-120



## **120LED Solar Powered PIR Sensor Flood Light User Manual**

Please Charge the Light for 6 hours before Use



### **Brief introduction:**

1. It is an energy saving and portable solar powered flood light.
2. Suitable for the county road, yard, garage, patio, garden, park, orchard, etc.
3. Easy to install, wiring free, no electricity needed.
4. Energy saving with three optional working modes.

### **Specifications:**

1. Solar Panel: 6V/3.5W
2. Battery: 3.2V/2200mAh Li-ion battery
3. LED: 120pcs SMD2835
4. Luminous: 1000LM
6. Sensor range: 120°, 26ft.
6. IP rate: IP65 waterproof.

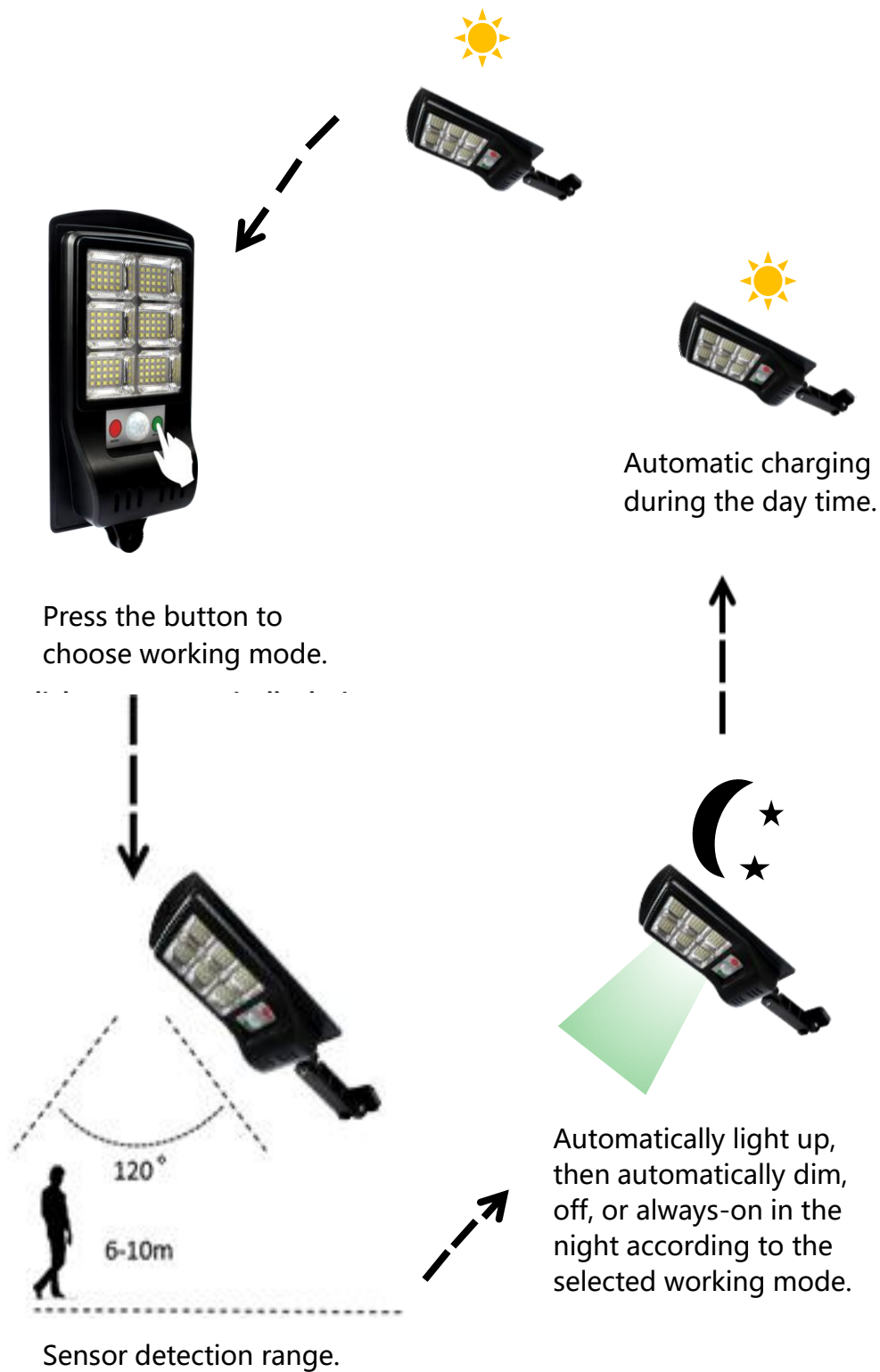
### **Instruction:**

1. Auto dusk-to-dawn operation with 3 optional working modes
2. Choose one of three working modes before installation as below:
  - a. Press the "ON/OFF" button to turn on the mode 1: Dim light and induction. No motion, dim light; when motion detected, bright light for 15s.
  - b. Press the "Mode" button to switch the mode 2: No motion, no light; when motion detected, bright light for 15s.
  - c. Press the "Mode" button again to switch the mode 3: Always-on bright light for about 6-8 hours until battery protection level.
  - d. Press the "ON/OFF" button, the light will be turned off.
3. After setting and installation, the working mode will work automatically according to the setting.
4. Mode 2 is recommended for longer operation hours.
5. The light will be fully charged within 6-8 hours; charging time depends on weather condition; the more sunlight exposure, the shorter charging time.

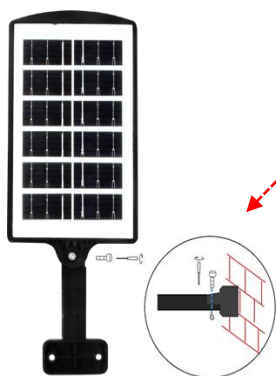
### **Attention:**

1. Make sure the light is turned to "on" status before installation.
2. Install the light in places with maximum sunlight exposure.
3. Clean the solar panel regularly to ensure effective charging.
4. Turn off the light if you do not use it for a long time.
5. Please do not put the battery into the fire to avoid exploding.

**Charge the light in the sunlight for 6-8 hours**

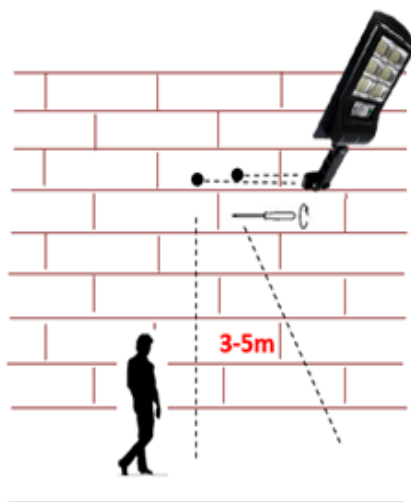


## Installation



1. Screw up the bolt to fix the light with the support pole.

2. Screw up the bolt to fix the support



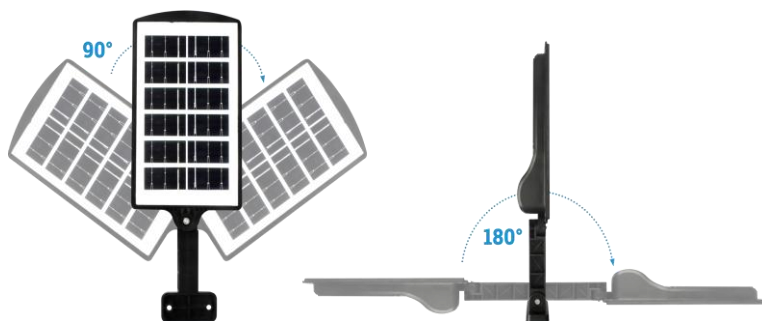
3. Drill two holes, insert the plastic expansion pillar, and tighten the screw.

4. Adjust the light to suitable direction.

Ideal height is 3-5m/10-16.4ft.

## Notice

The light is adjustable with 90° left and right , 180° up and down.



## Warranty :

1 years. If any problem please contact with Duewot customer service team:  
[support@duewot.com](mailto:support@duewot.com)

### FCC Statement

This equipment has been tested and found to comply with the limits for a Class B digital device, pursuant to Part 15 of the FCC Rules. These limits are designed to provide reasonable protection against harmful interference in a residential installation. This equipment generates uses and can radiate radio frequency energy and, if not installed and used in accordance with the instructions, may cause harmful interference to radio communications. However, there is no guarantee that interference will not occur in a particular installation. If this equipment does cause harmful interference to radio or television reception, which can be determined by turning the equipment off and on, the user is encouraged to try to correct the interference by one or more of the following measures:

- Reorient or relocate the receiving antenna.
- Increase the separation between the equipment and receiver.
- Connect the equipment into an outlet on a circuit different from that to which the receiver is connected.
- Consult the dealer or an experienced radio/TV technician for help.

This device complies with part 15 of the FCC Rules. Operation is subject to the following two conditions:

(1) This device may not cause harmful interference, and (2) this device must accept any interference received, including interference that may cause undesired operation.

Changes or modifications not expressly approved by the party responsible for compliance could void the user's authority to operate the equipment.