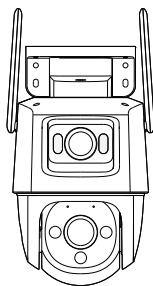


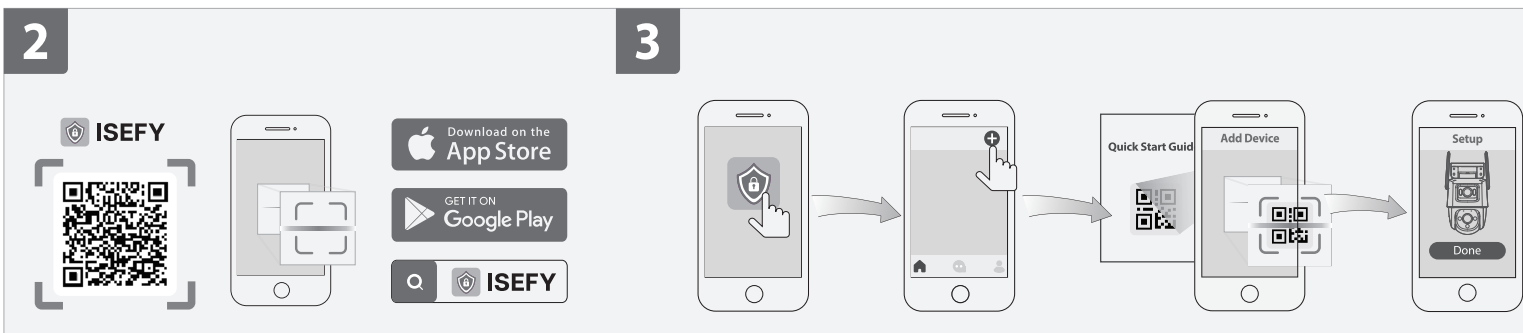
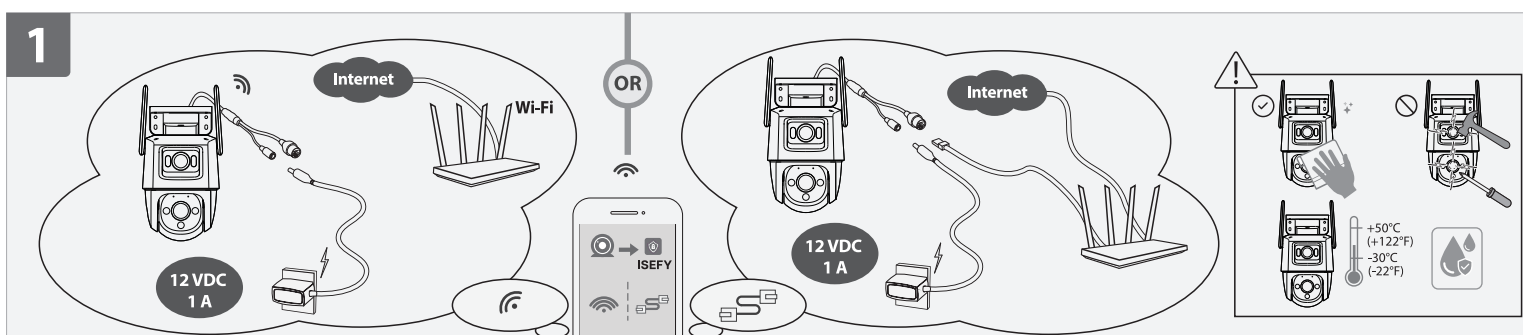
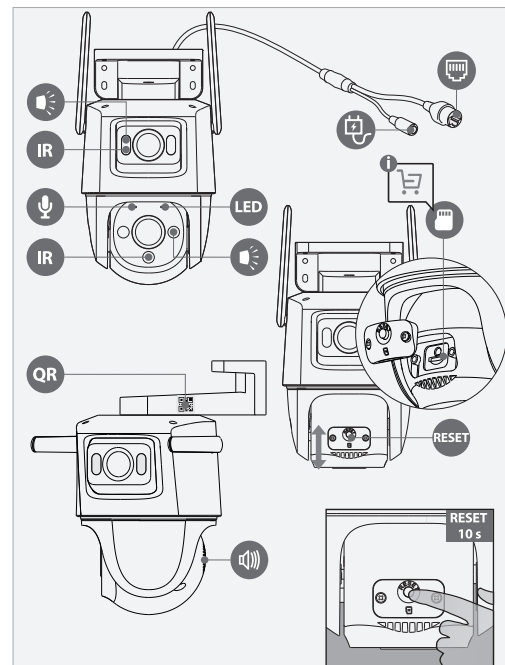
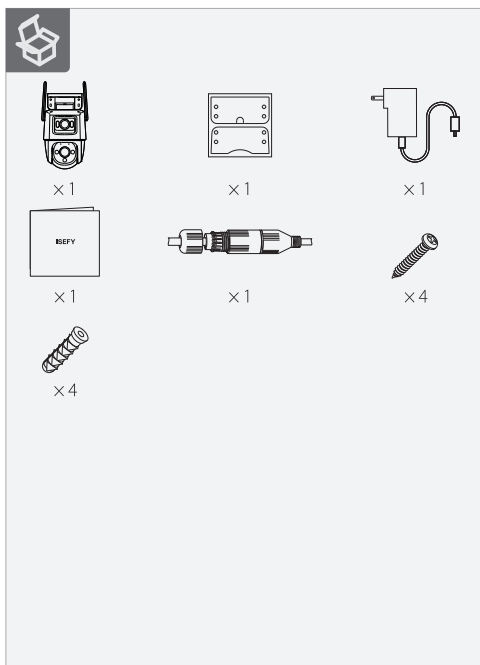


# Quick Start Guide

V1.0.0



1.2.51.50.U10263-000



## English

### 1 Power On the Camera

Plug the camera into a power source. You can choose wireless or wired network connection (see part 1).

### 2 Get the ISEFY App

Scan the QR code on part 2 or search for "ISEFY" to download and install the app. Create an account and log in.

### 3 Set Up the Camera

Scan the QR code on the body of the device or on the cover of this guide with the app, and then follow on-screen instructions to complete the setup (see part 3).

### 4 Install the Camera

Check that the surface where you're mounting the camera can hold three times its weight. For how to install, see the detailed steps, please see part 4.

LED Status		Device Status
Green	Flashing	Ready to set up the device
	Solid	Working properly
Red	Flashing	Network disconnected
	Solid	Failed to set up the device
Green & Red	Alternating	Booting
	Alternating	Device malfunction
Off	/	Updating firmware
	/	Power off
Off	/	LED turned off
	/	LED turned off

1 If you need to reset the camera, press and hold the reset button for 10 s. The LED turns solid red when the camera is booting.

## Français

### 1 Allumer la caméra

Raccordez la caméra à l'alimentation. Vous pouvez opter pour une connexion sans fil ou filaire (voir Partie 1).

### 2 Obtenir l'appli ISEFY

Scannez le code QR à la partie 2 ou recherchez « ISEFY » pour télécharger et installer l'application. Créez un compte et connectez-vous.

### 3 Configuration de la caméra

Scannez le code QR sur le boîtier de l'appareil ou sur la couverture de ce guide avec l'application, puis suivez les instructions à l'écran pour terminer la configuration (voir partie 3).

### 4 Installez la caméra

Assurez-vous que la surface de montage est suffisamment solide pour supporter trois fois le poids de la caméra. Pour plus de détails sur le processus d'installation, voir partie 4.

État du voyant		État de l'appareil
Vert	Clignotant	Prêt à configurer l'appareil
	Fixe	Fonctionne correctement
Rouge	Clignotant	Réseau déconnecté
	Fixe	Échec de la configuration de l'appareil
Vert et rouge	Alternatif	Démarrage
	Alternatif	Défaillance de l'appareil
Éteint	/	Le microprogramme est en cours de mise à jour
	/	Arrêt
Éteint	/	LED s'allume
	/	LED s'allume

1 Si vous avez besoin de réinitialiser la caméra, maintenez le bouton de réinitialisation enfoncé pendant 10 secondes. Le voyant passe au rouge fixe lorsque la caméra démarre.

## Español

### 1 Encienda la cámara

Conecte la cámara a la corriente. Puede elegir una conexión a la red de forma inalámbrica o por cable (consulte la parte 1).

### 2 Descargue la aplicación ISEFY

Escanee el código QR en el apartado 2 o busque "ISEFY" para descargar e instalar la aplicación. Cree una cuenta e inicie sesión.

### 3 Configure el dispositivo

Use la aplicación para escanear el código QR situado en el cuerpo del dispositivo o en la portada de esta guía y siga las instrucciones de la pantalla para completar la configuración (consulte el apartado 3).

### 4 Instale la cámara

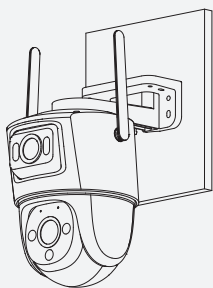
Asegúrese de que la superficie de montaje sea lo suficientemente resistente para soportar tres veces el peso de la cámara. Para consultar el proceso de instalación con más detalle, consulte el apartado 4.

Estado del led		Estado del dispositivo
Verde	Parpadeo	Listo para configurar el dispositivo
	Fijo	Funciona correctamente
Rojo	Parpadeo	Red desconectada
	Fijo	Fallo al configurar el dispositivo
Verde y rojo	Alternante	Arranque
	Alternante	Avería del dispositivo
Apagado	/	Actualizando firmware
	/	Apagándose
Apagado	/	LED apagado
	/	LED apagado

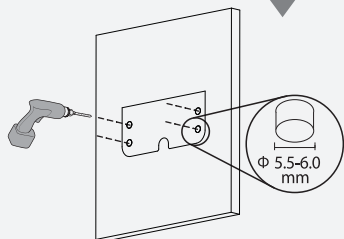
1 Si tiene que reiniciar la cámara, mantenga pulsado el botón de reinicio durante 10 segundos. El LED se iluminará en rojo fijo cuando la cámara arranque.

4

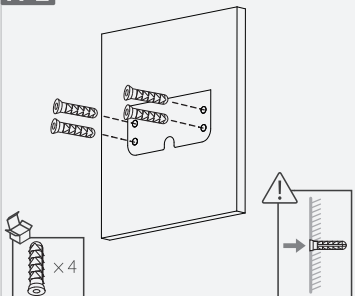
A



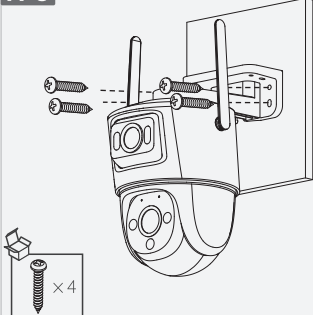
A-1



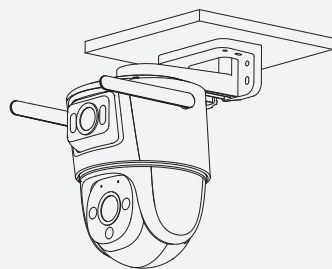
A-2



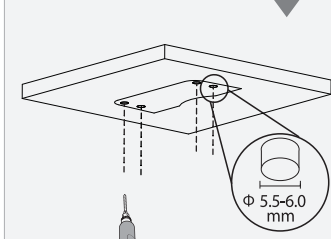
A-3



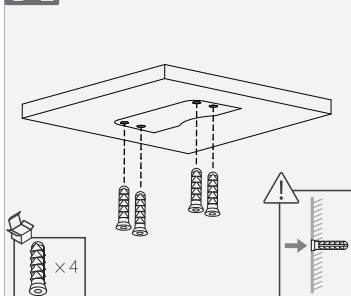
B



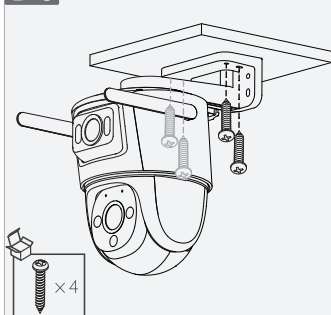
B-1



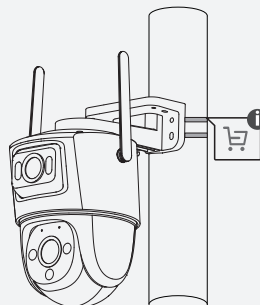
B-2



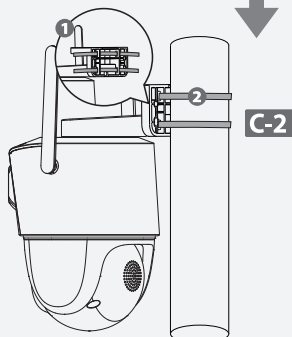
B-3



C

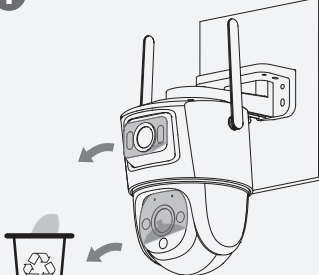


C-1

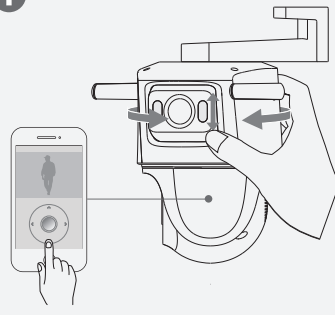


C-2

i



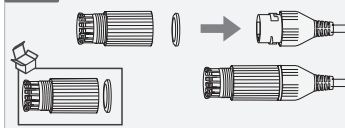
i



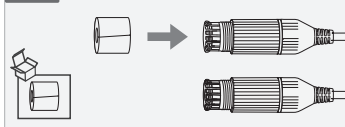
D1 (Optional)



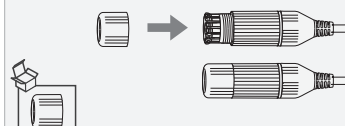
D1-1



D1-2



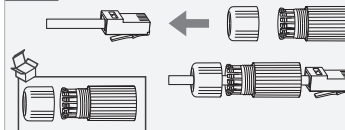
D1-3



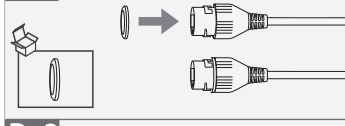
D2 (Optional)



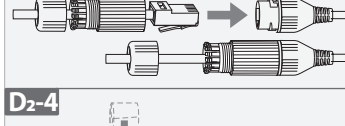
D2-1



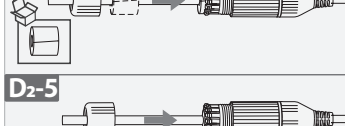
D2-2



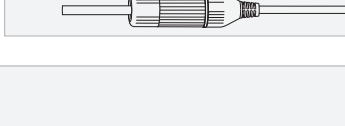
D2-3



D2-4



D2-5



## USA Regulatory Compliance

### FCC

Please take attention that changes or modification not expressly approved by the party responsible for compliance could void the user's authority to operate the equipment.

This device complies with Part 15 of the FCC Rules. Operation is subject to the following two conditions:

(1) This device may not cause harmful interference, and

(2) This device must accept any interference received, including interference that may cause undesired operation.

This equipment complies with FCC radiation exposure limits set forth for an uncontrolled environment. This equipment should be installed and operated with a minimum distance of 20 cm between the radiator and your body.