

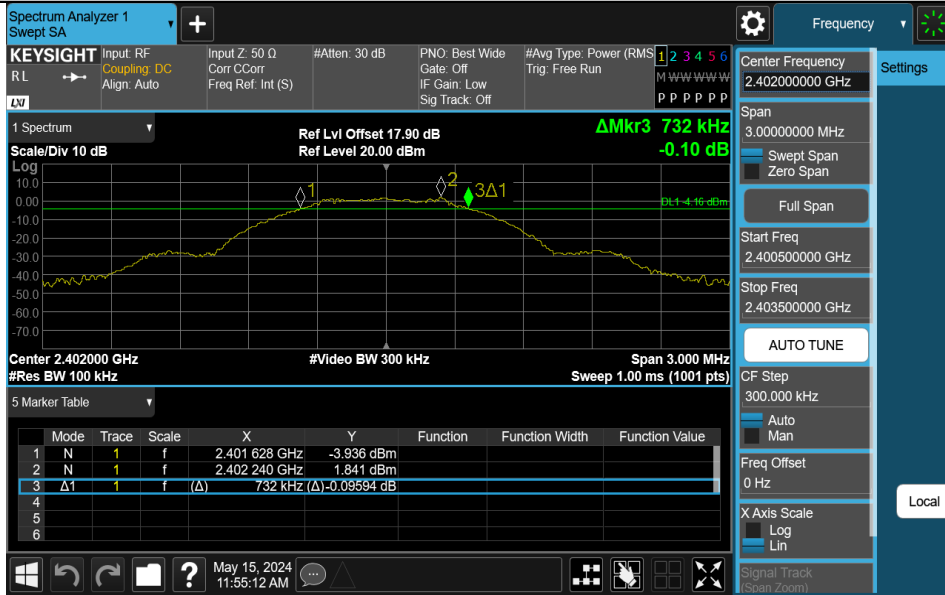
11.APPENDIX

Appendix A: DTS Bandwidth Test Result

Test Mode	Antenna	Frequency[MHz]	DTS BW [MHz]	FL[MHz]	FH[MHz]	Limit[MHz]	Verdict
BLE_1M	Ant1	2402	0.732	2401.628	2402.360	0.5	PASS
BLE_1M	Ant1	2440	0.744	2439.616	2440.360	0.5	PASS
BLE_1M	Ant1	2480	0.750	2479.610	2480.360	0.5	PASS
BLE_2M	Ant1	2402	1.254	2401.388	2402.642	0.5	PASS
BLE_2M	Ant1	2440	1.290	2439.376	2440.666	0.5	PASS
BLE_2M	Ant1	2480	1.290	2479.370	2480.660	0.5	PASS

Test Graphs

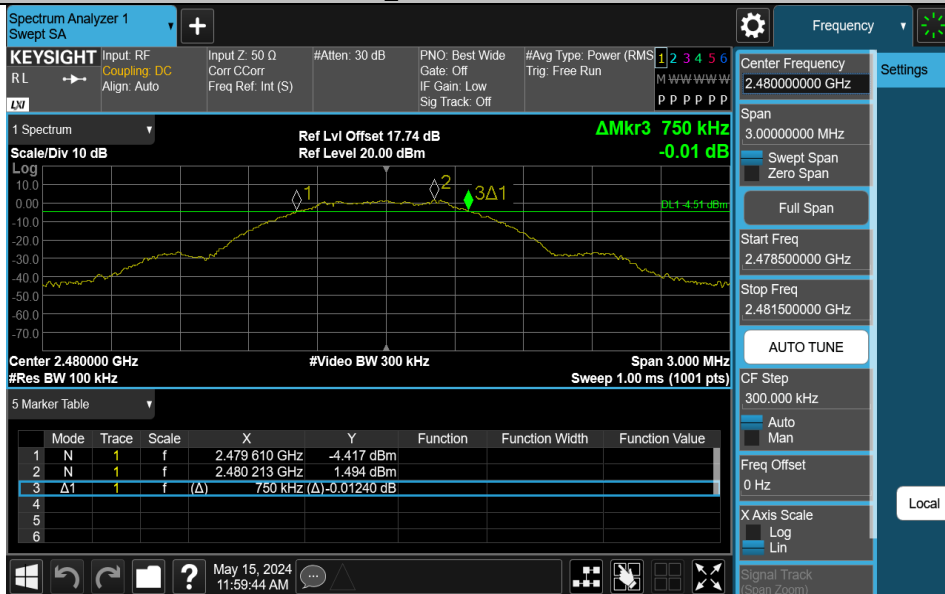
BLE_1M-Ant1-2402-PASS



BLE_1M-Ant1-2440-PASS



BLE_1M-Ant1-2480-PASS



BLE_2M-Ant1-2402-PASS



BLE_2M-Ant1-2440-PASS



BLE_2M-Ant1-2480-PASS

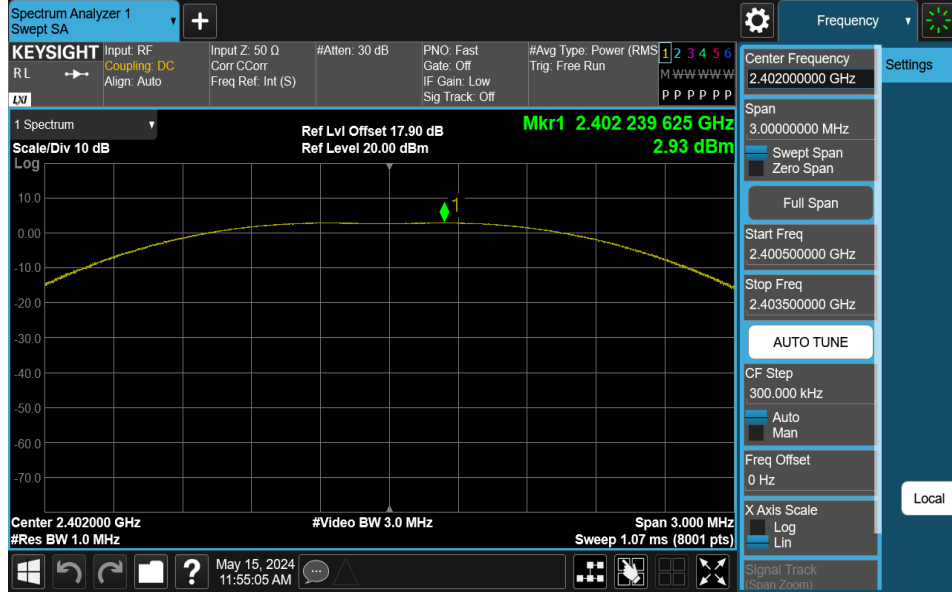


Appendix B: Maximum conducted output power
Test Result Peak

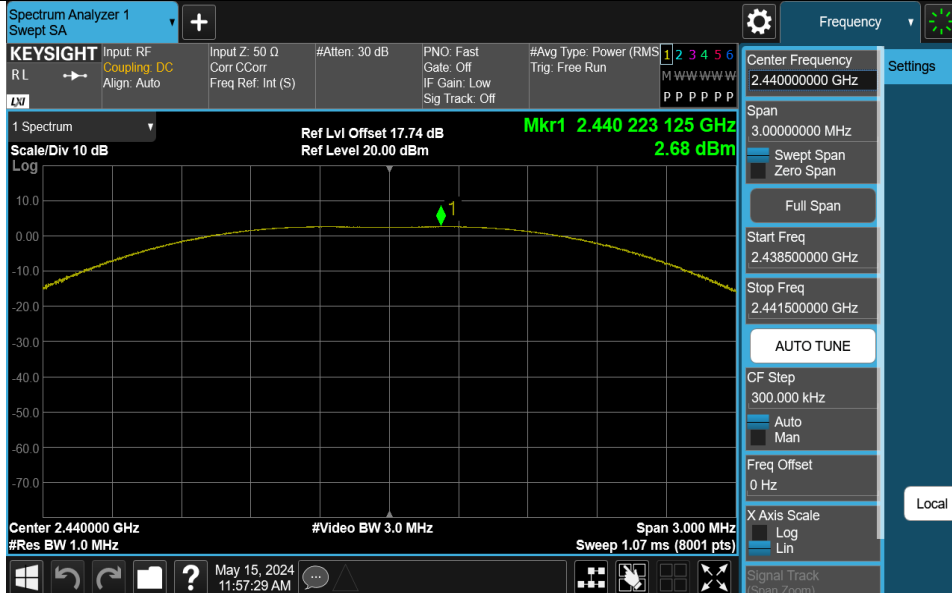
Test Mode	Antenna	Frequency[MHz]	Conducted Peak Power[dBm]	Conducted Limit[dBm]	Verdict
BLE_1M	Ant1	2402	2.93	≤30	PASS
BLE_1M	Ant1	2440	2.68	≤30	PASS
BLE_1M	Ant1	2480	2.61	≤30	PASS
BLE_2M	Ant1	2402	3.01	≤30	PASS
BLE_2M	Ant1	2440	2.79	≤30	PASS
BLE_2M	Ant1	2480	2.76	≤30	PASS

Test Graphs Peak

BLE_1M-Ant1-2402-PASS



BLE_1M-Ant1-2440-PASS



BLE_1M-Ant1-2480-PASS



BLE_2M-Ant1-2402-PASS



BLE_2M-Ant1-2440-PASS



BLE_2M-Ant1-2480-PASS



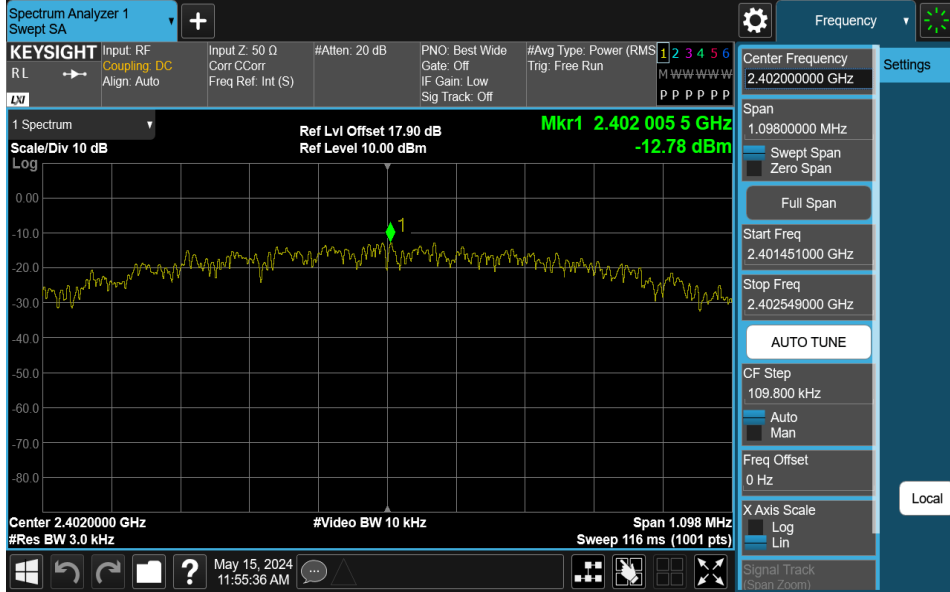
Appendix C: Maximum power spectral density

Test Result

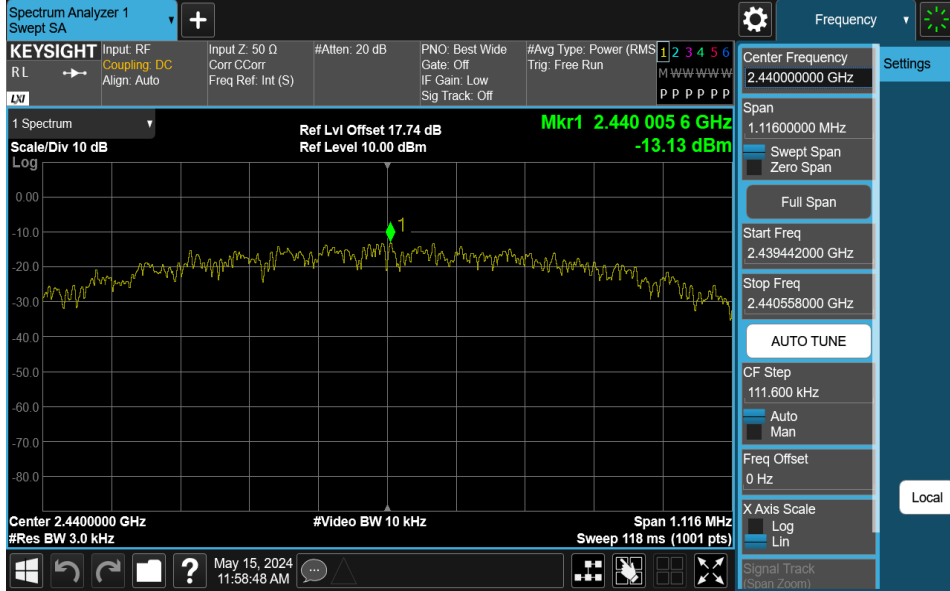
Test Mode	Antenna	Frequency[MHz]	Result[dBm/3kHz]	Limit[dBm/3kHz]	Verdict
BLE_1M	Ant1	2402	-12.78	≤8.00	PASS
BLE_1M	Ant1	2440	-13.13	≤8.00	PASS
BLE_1M	Ant1	2480	-13.24	≤8.00	PASS
BLE_2M	Ant1	2402	-13.75	≤8.00	PASS
BLE_2M	Ant1	2440	-14.31	≤8.00	PASS
BLE_2M	Ant1	2480	-14.56	≤8.00	PASS

Test Graphs

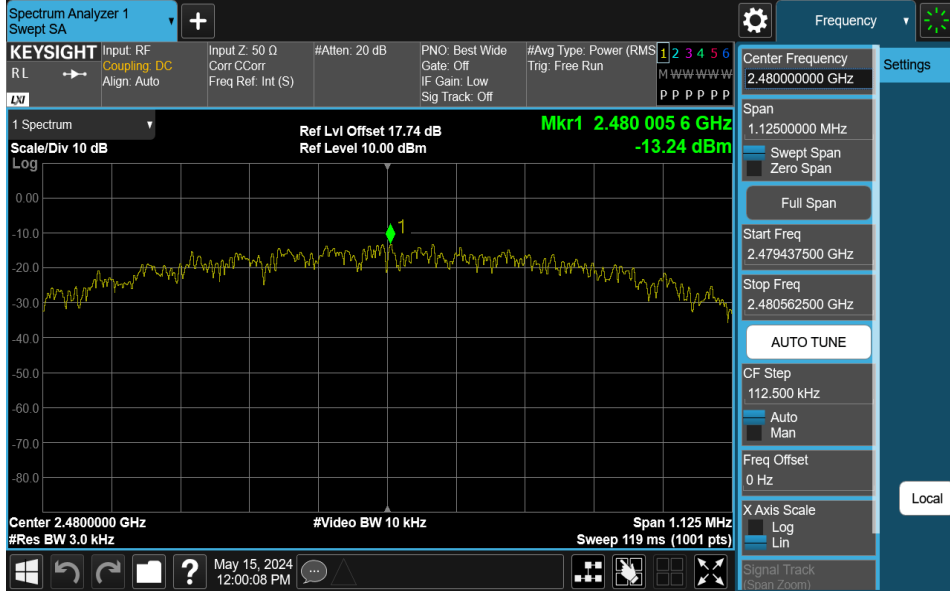
BLE_1M-Ant1-2402-PASS



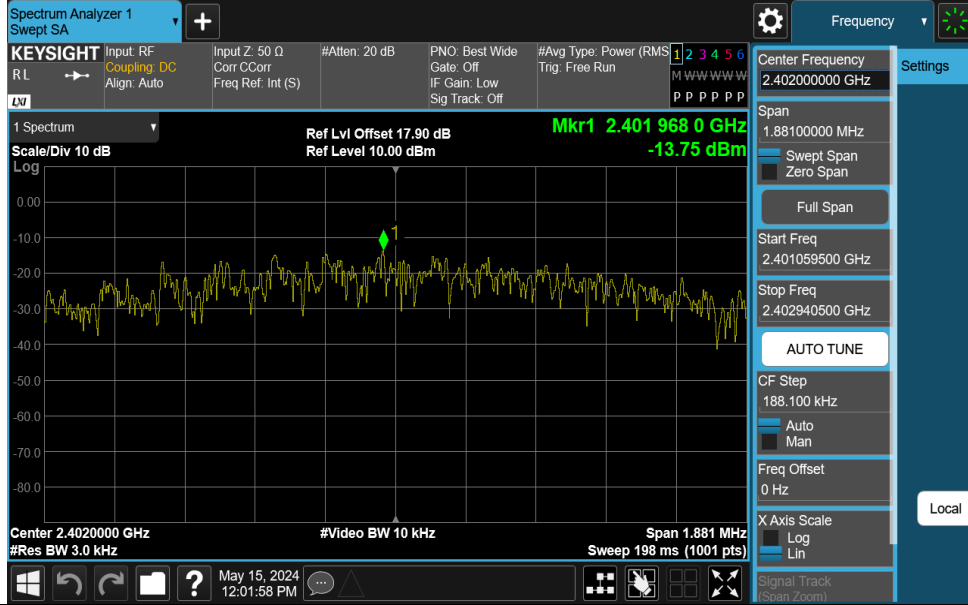
BLE_1M-Ant1-2440-PASS



BLE_1M-Ant1-2480-PASS



BLE_2M-Ant1-2402-PASS



BLE_2M-Ant1-2440-PASS



BLE_2M-Ant1-2480-PASS



Appendix D: Reference level measurement

Test Result

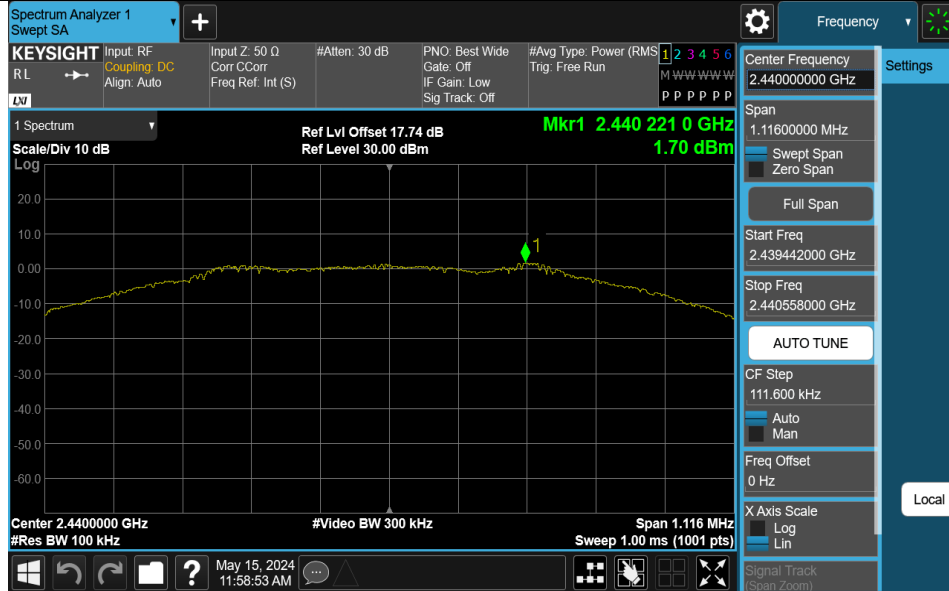
Test Mode	Antenna	Freq(MHz)	Max.Point[MHz]	Result[dBm]
BLE_1M	Ant1	2402	2402.22	1.93
BLE_1M	Ant1	2440	2440.22	1.70
BLE_1M	Ant1	2480	2480.22	1.61
BLE_2M	Ant1	2402	2402.14	0.27
BLE_2M	Ant1	2440	2440.14	-0.09
BLE_2M	Ant1	2480	2480.14	-0.09

Test Graphs

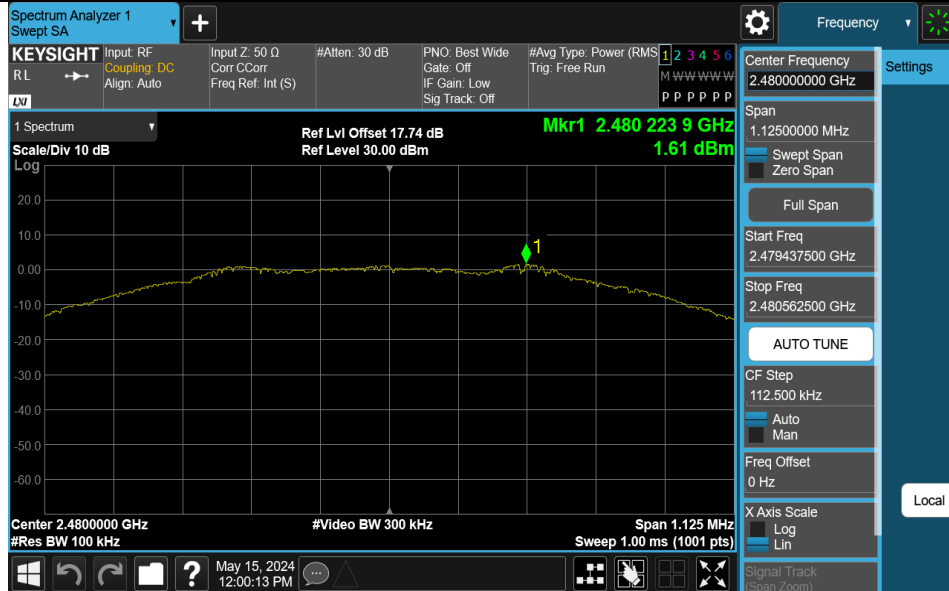
BLE_1M-Ant1-2402-PASS



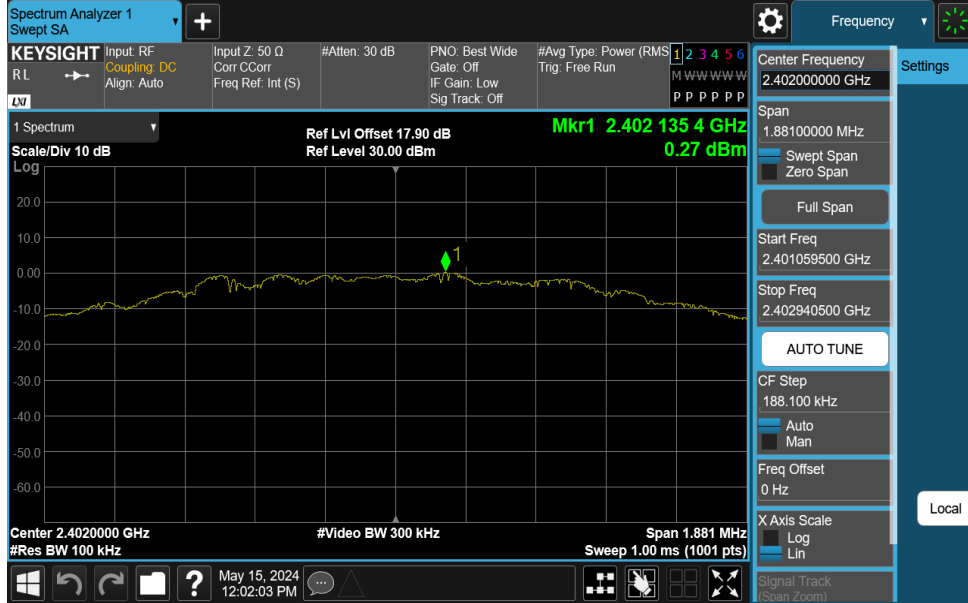
BLE_1M-Ant1-2440-PASS



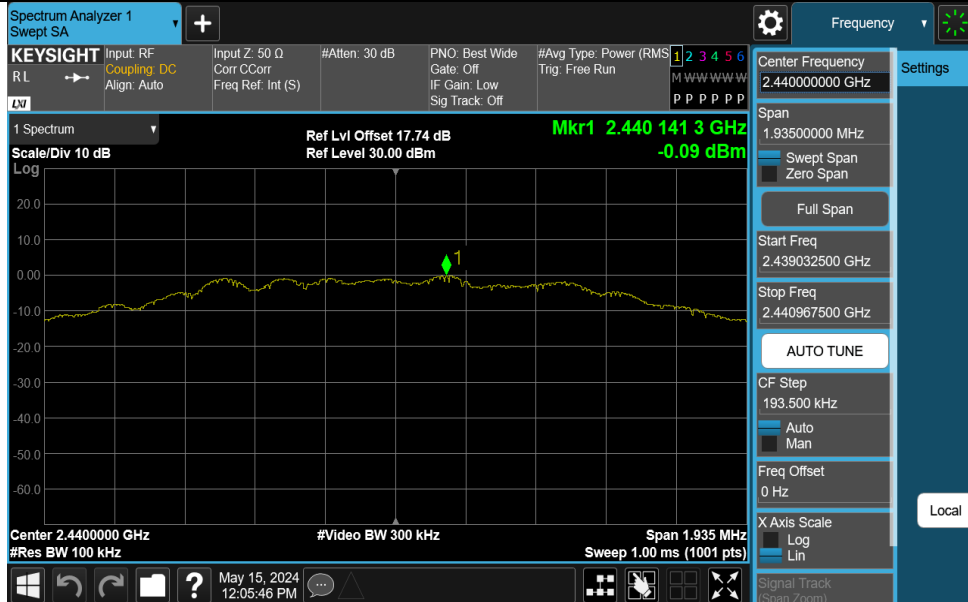
BLE_1M-Ant1-2480-PASS



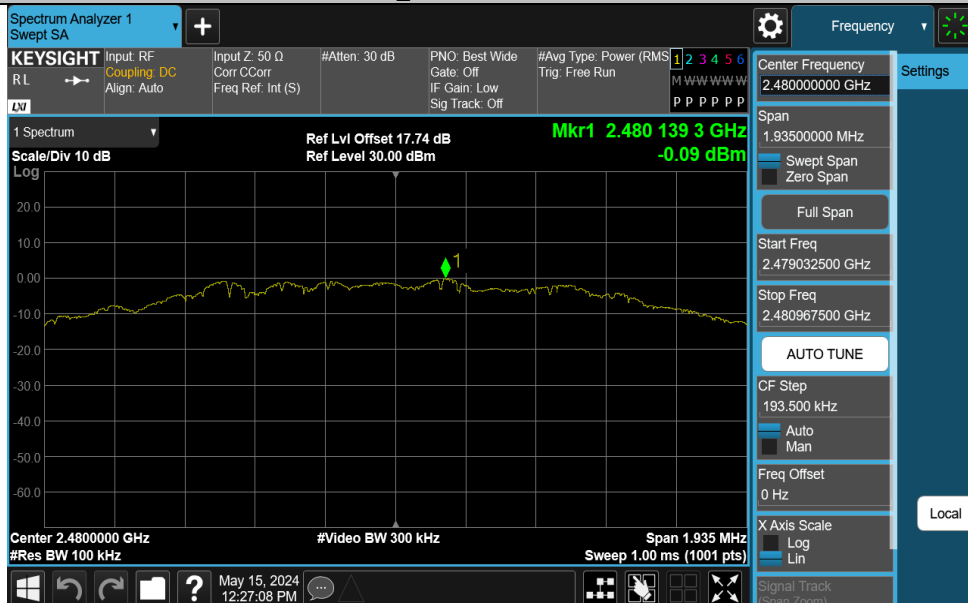
BLE_2M-Ant1-2402-PASS



BLE_2M-Ant1-2440-PASS



BLE_2M-Ant1-2480-PASS



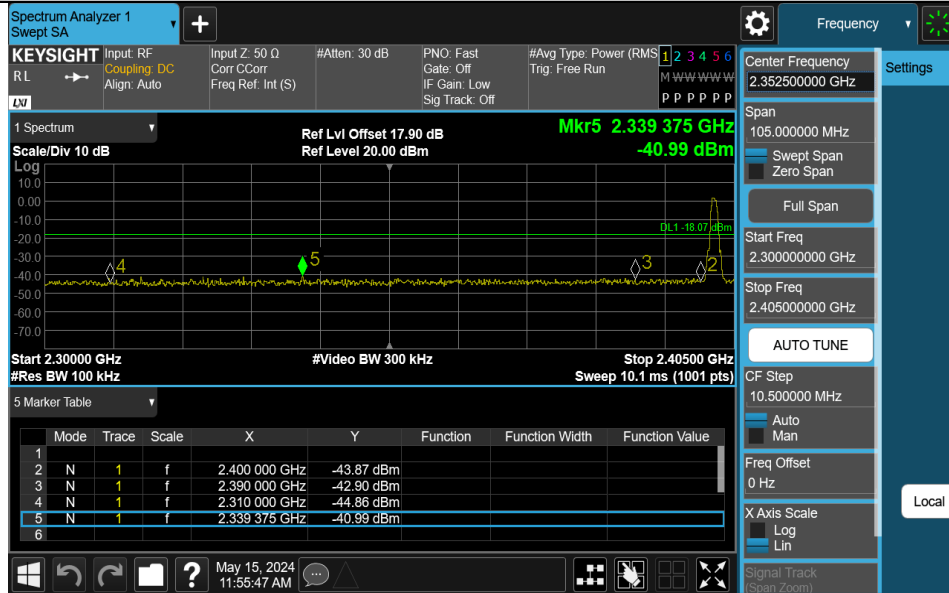
Appendix E: Band edge measurements

Test Result

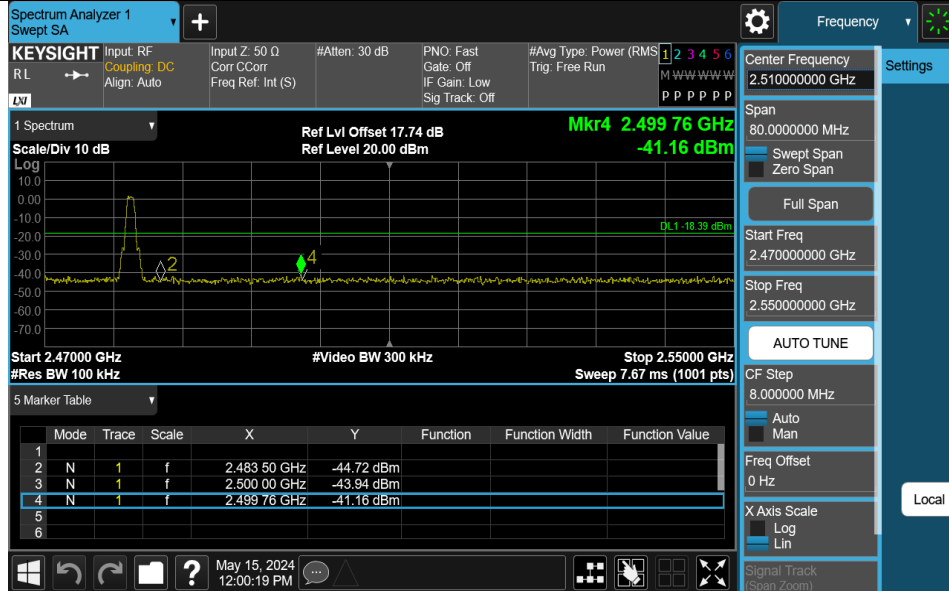
Test Mode	Antenna	ChName	Frequency[MHz]	RefLevel[dBm]	Result[dBm]	Limit[dBm]	Verdict
BLE_1M	Ant1	Low	2402	1.93	-40.99	≤ -18.07	PASS
BLE_1M	Ant1	High	2480	1.61	-41.16	≤ -18.39	PASS
BLE_2M	Ant1	Low	2402	0.27	-31.65	≤ -19.73	PASS
BLE_2M	Ant1	High	2480	-0.09	-41.25	≤ -20.09	PASS

Test Graphs

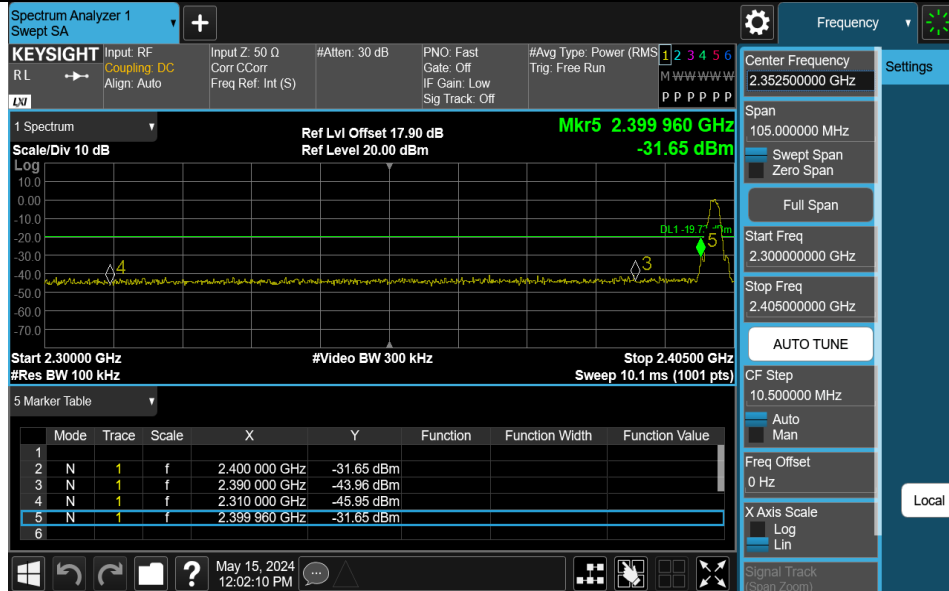
BLE_1M-Ant1-2402-PASS



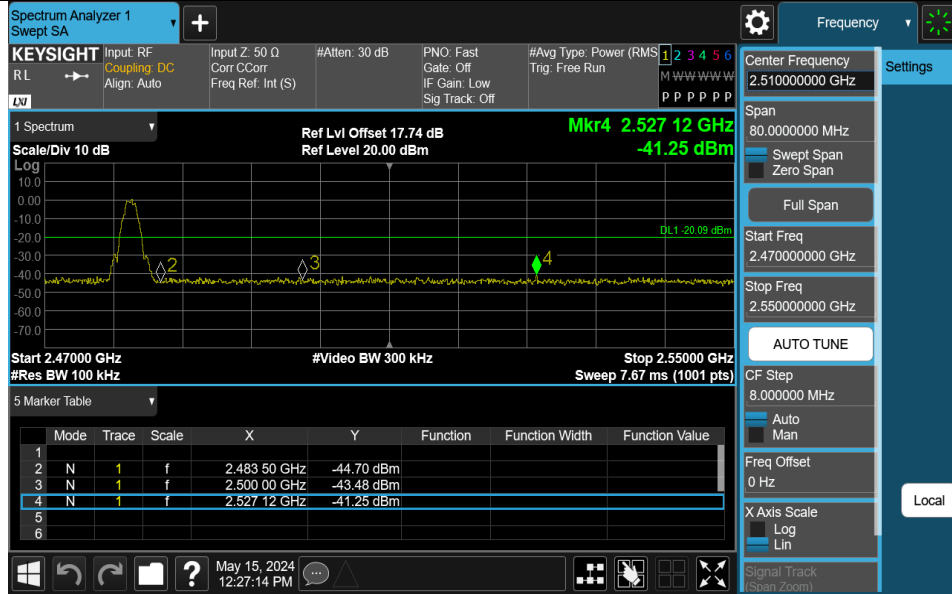
BLE_1M-Ant1-2480-PASS



BLE_2M-Ant1-2402-PASS



BLE_2M-Ant1-2480-PASS

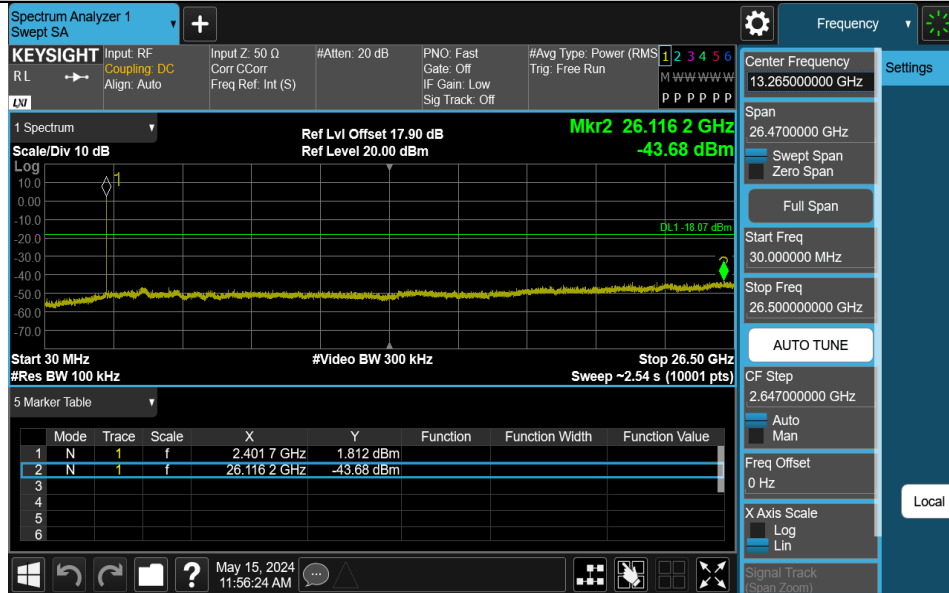


Appendix F: Conducted Spurious Emission Test Result

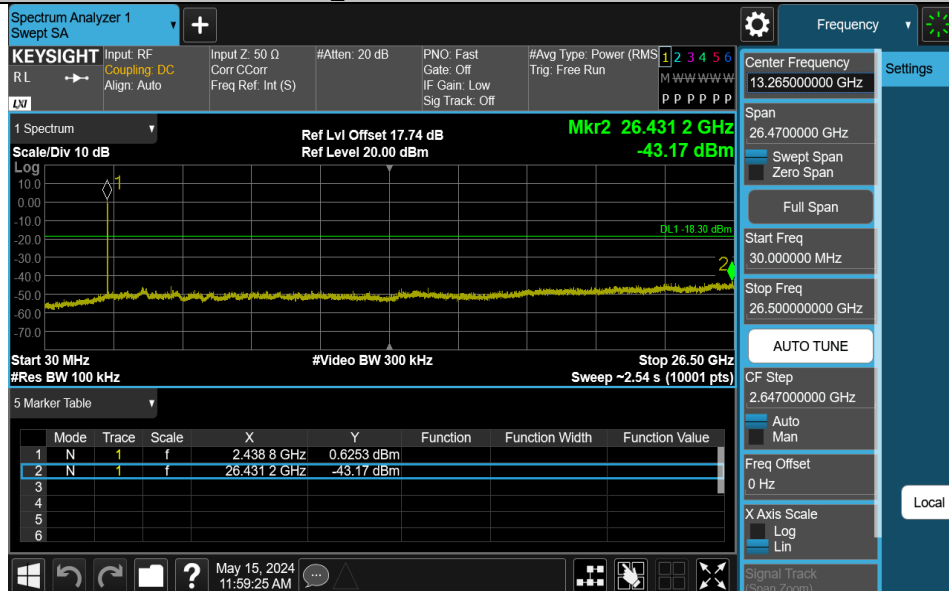
Test Mode	Antenna	Frequency[MHz]	FreqRange [MHz]	RefLevel [dBm]	Result[dBm]	Limit[dBm]	Verdict
BLE_1M	Ant1	2402	30~26500	1.93	-43.68	≤-18.07	PASS
BLE_1M	Ant1	2440	30~26500	1.70	-43.17	≤-18.3	PASS
BLE_1M	Ant1	2480	30~26500	1.61	-42.53	≤-18.39	PASS
BLE_2M	Ant1	2402	30~26500	0.27	-43.1	≤-19.73	PASS
BLE_2M	Ant1	2440	30~26500	-0.09	-43.05	≤-20.09	PASS
BLE_2M	Ant1	2480	30~26500	-0.09	-42.95	≤-20.09	PASS

Test Graphs

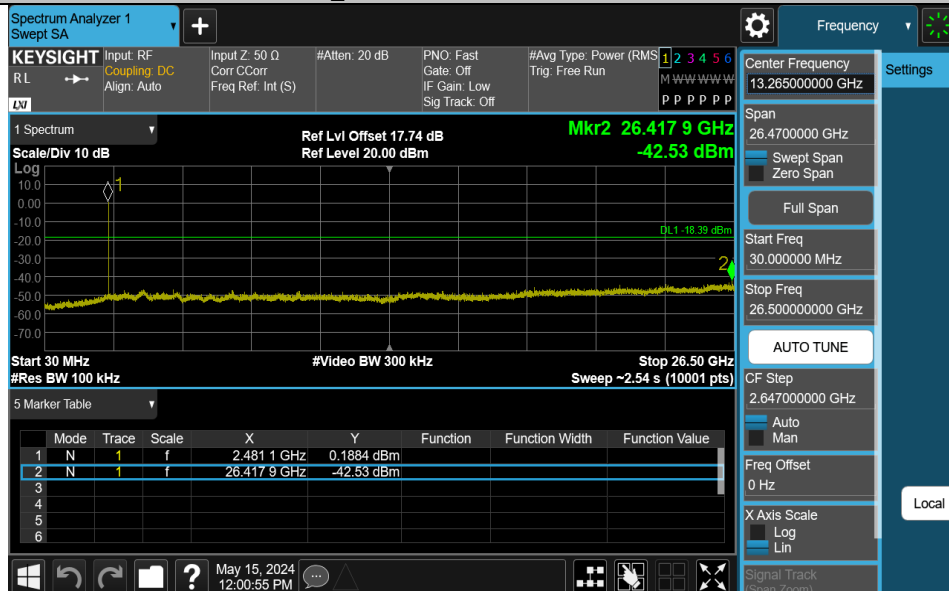
BLE_1M-Ant1-2402-30~26500-PASS



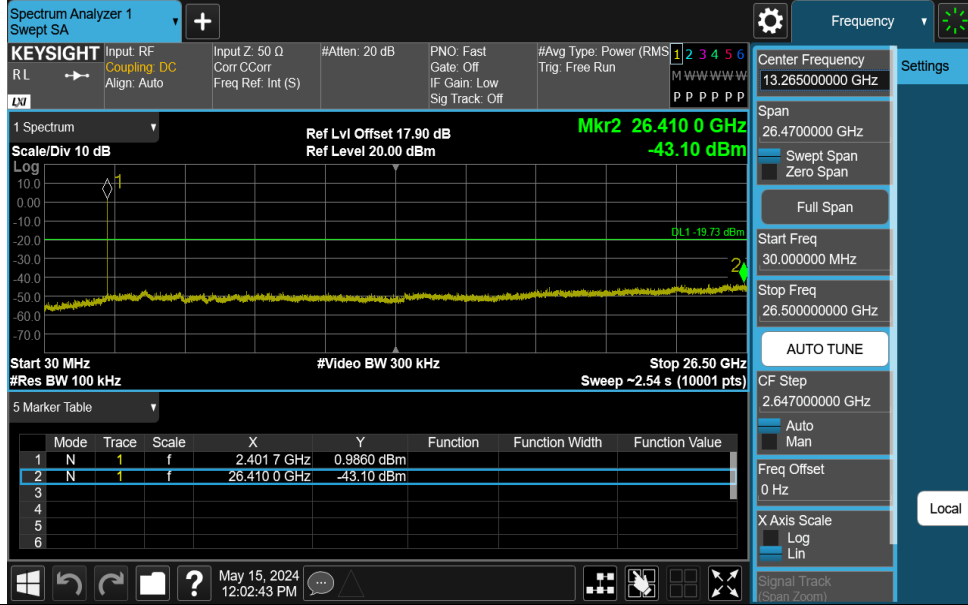
BLE_1M-Ant1-2440-30~26500-PASS



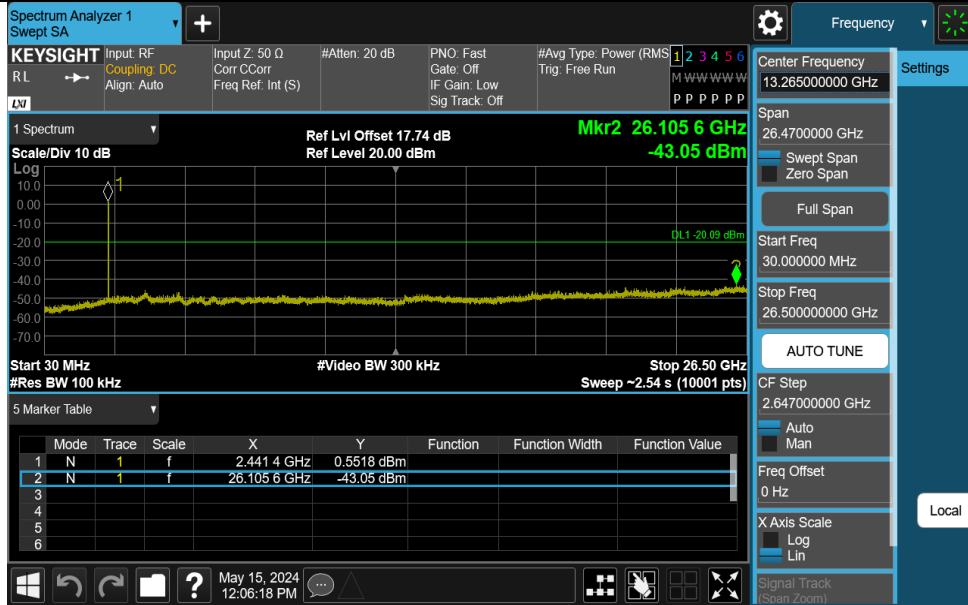
BLE_1M-Ant1-2480-30~26500-PASS



BLE_2M-Ant1-2402-30~26500-PASS



BLE_2M-Ant1-2440-30~26500-PASS



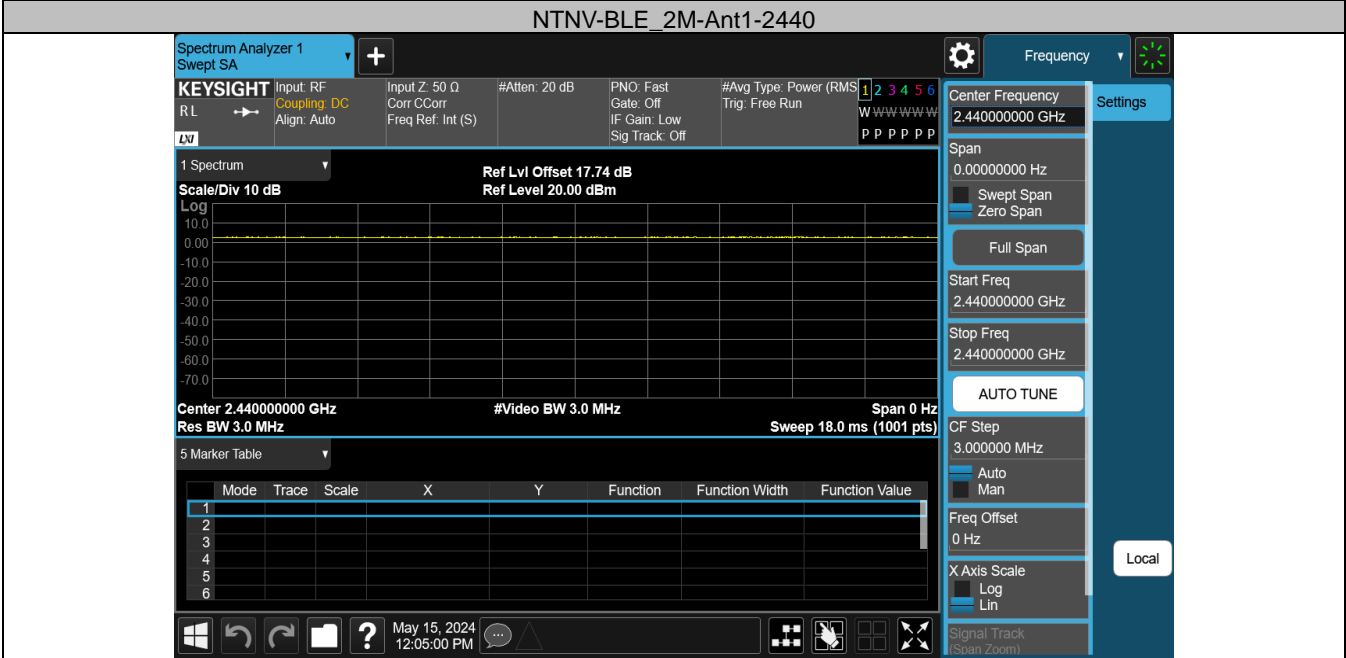
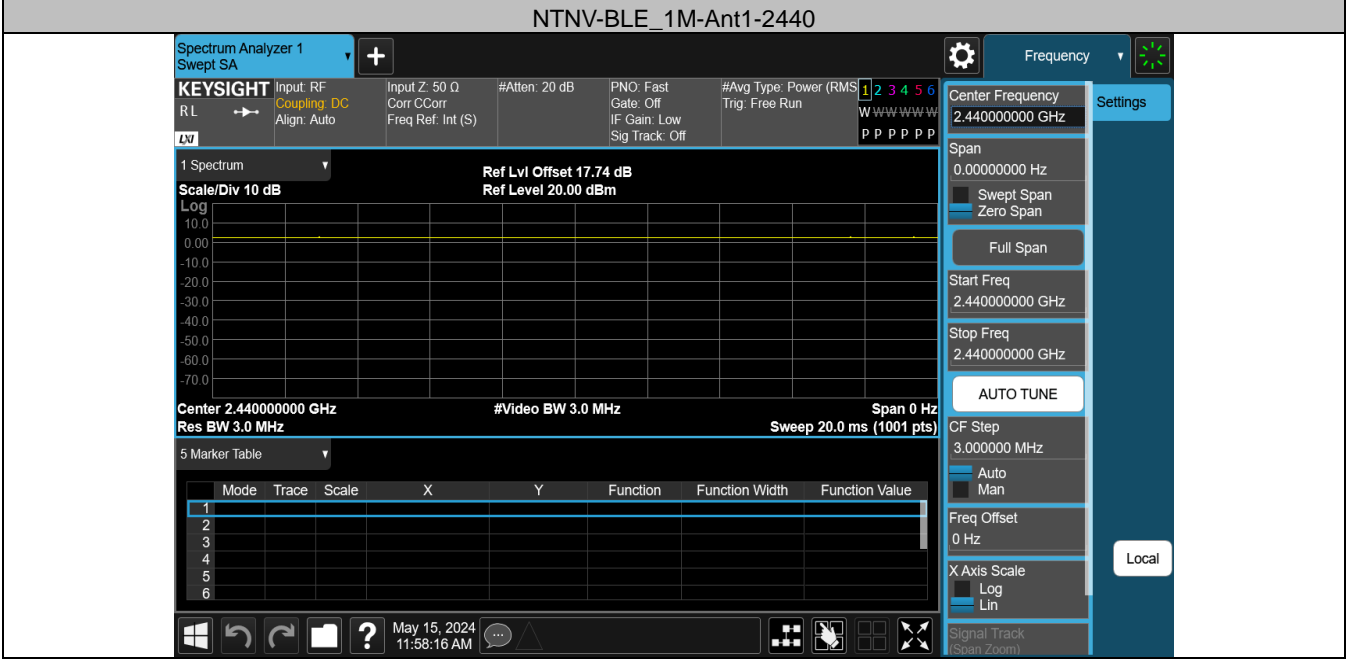
BLE_2M-Ant1-2480-30~26500-PASS



Appendix G: Duty Cycle Test Result

Test Mode	Antenna	Frequency[MHz]	ON Time [ms]	Period [ms]	Duty Cycle [%]	Duty Cycle Factor[dB]
BLE_1M	Ant1	2440	20.00	20.00	100.00	0.00
BLE_2M	Ant1	2440	18.00	18.00	100.00	0.00

Test Graphs

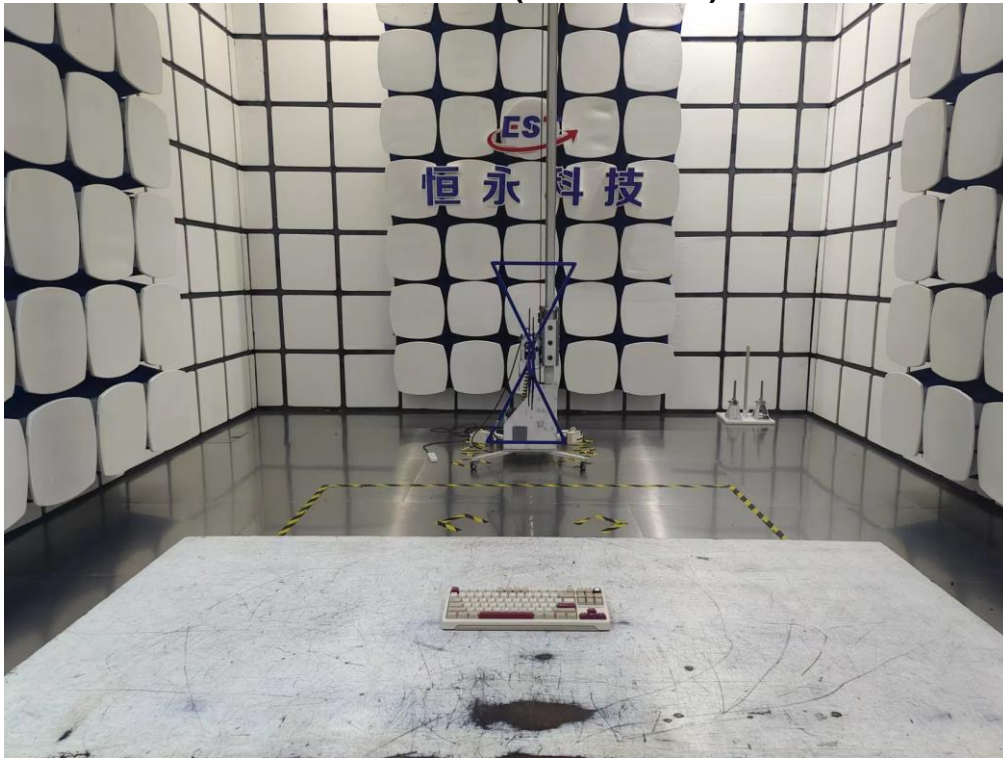


12. TEST SETUP PHOTO

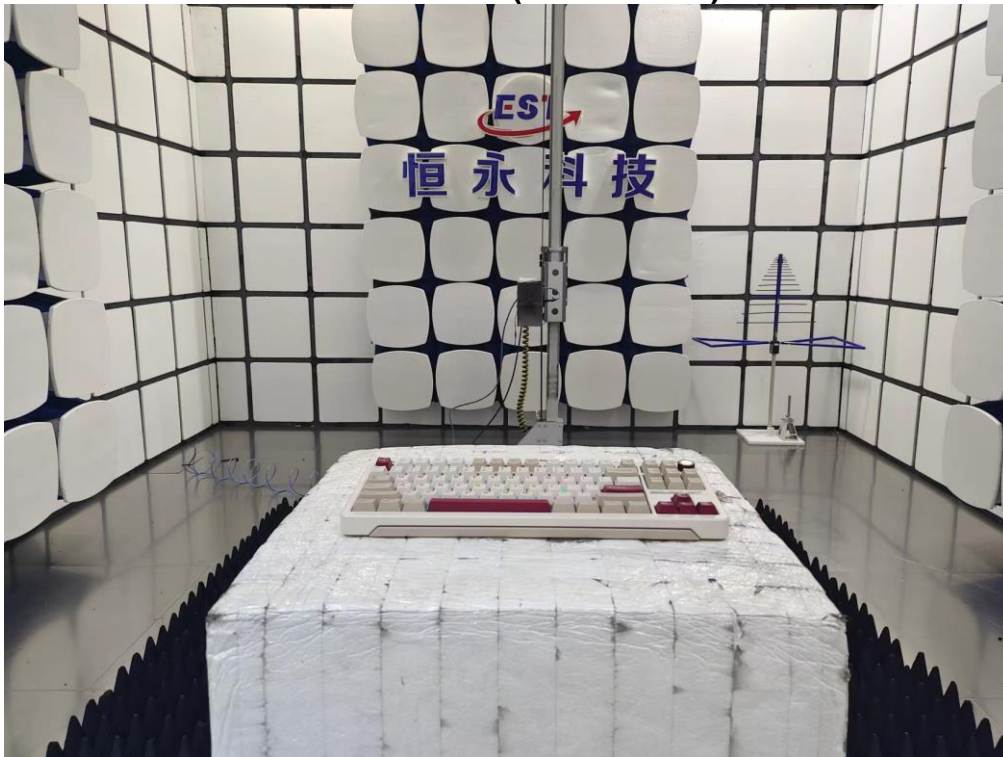
Conducted Test



Radiated Test (Below 1GHz)



Radiated Test (Above 1GHz)



13. EUT PHOTO

External Photos
M/N: B87

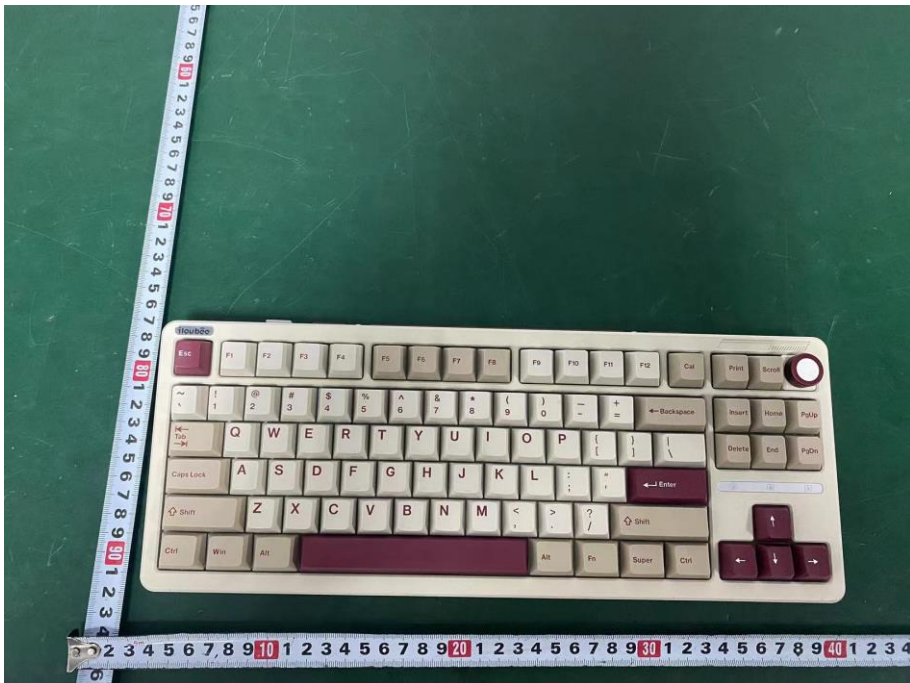


External Photos

M/N: B87



External Photos
M/N: B87



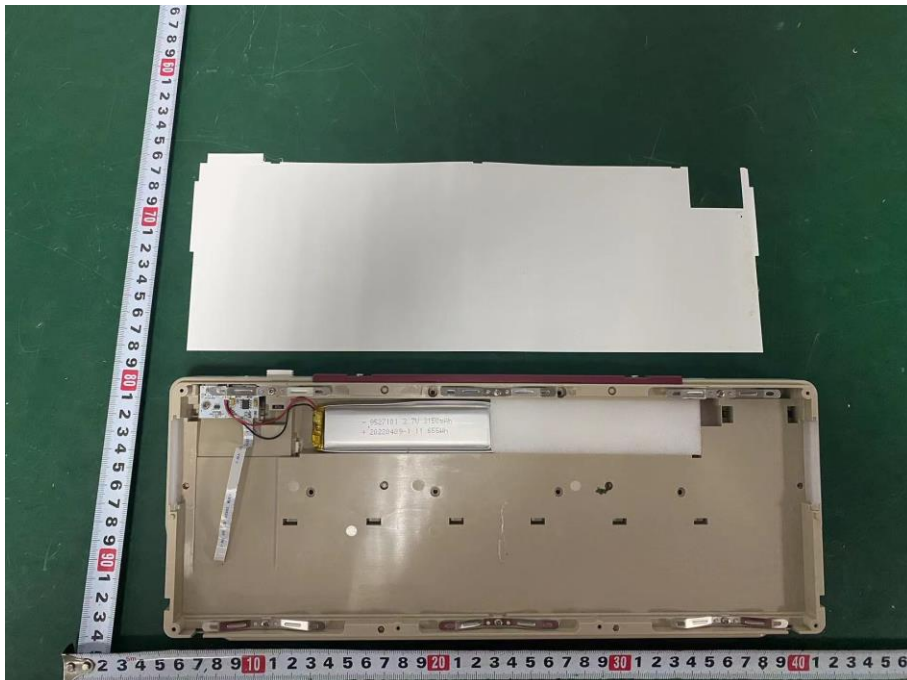
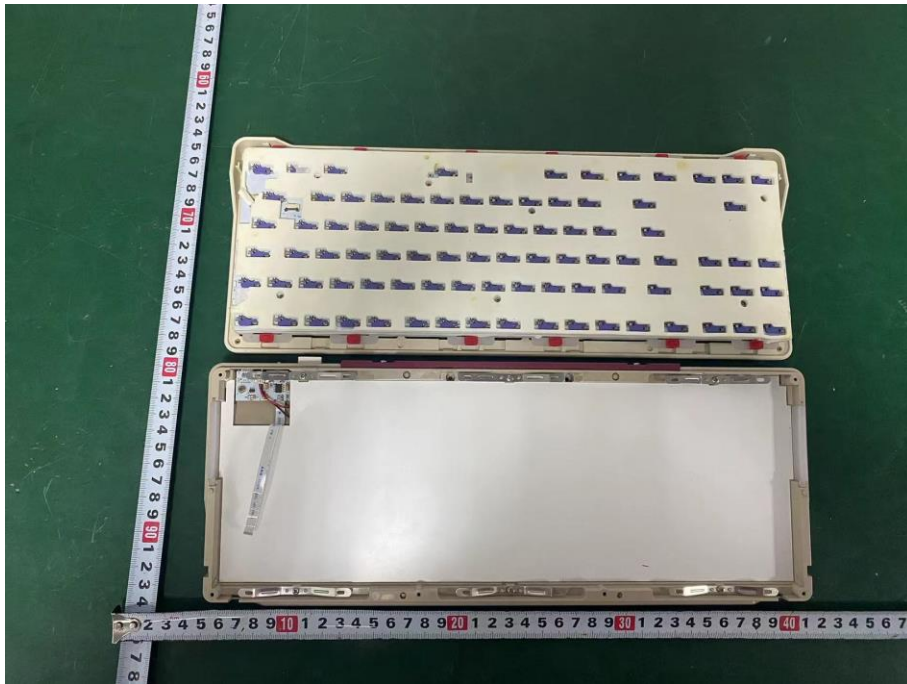
External Photos
M/N: B87



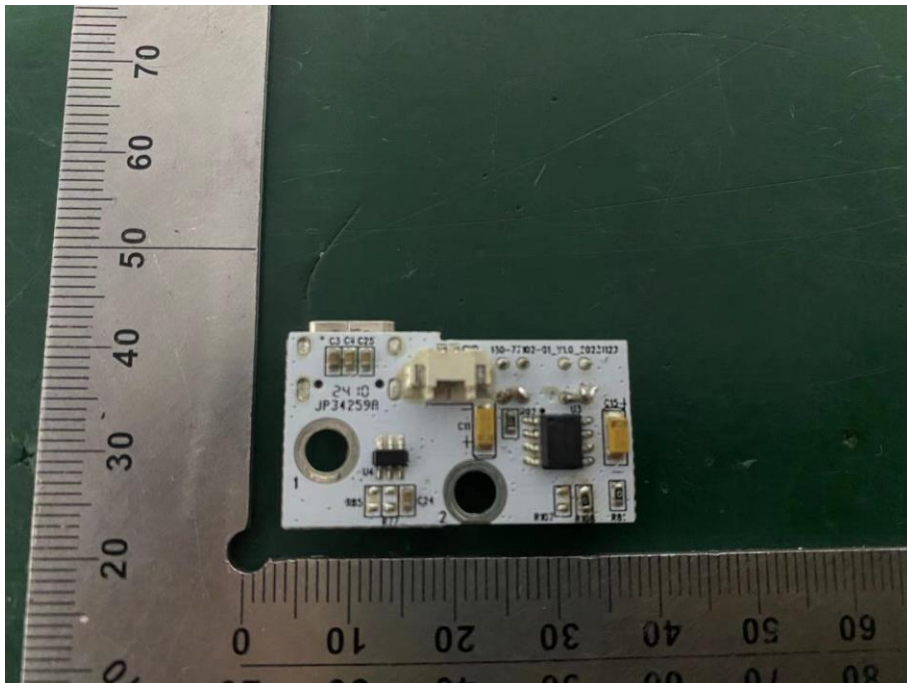
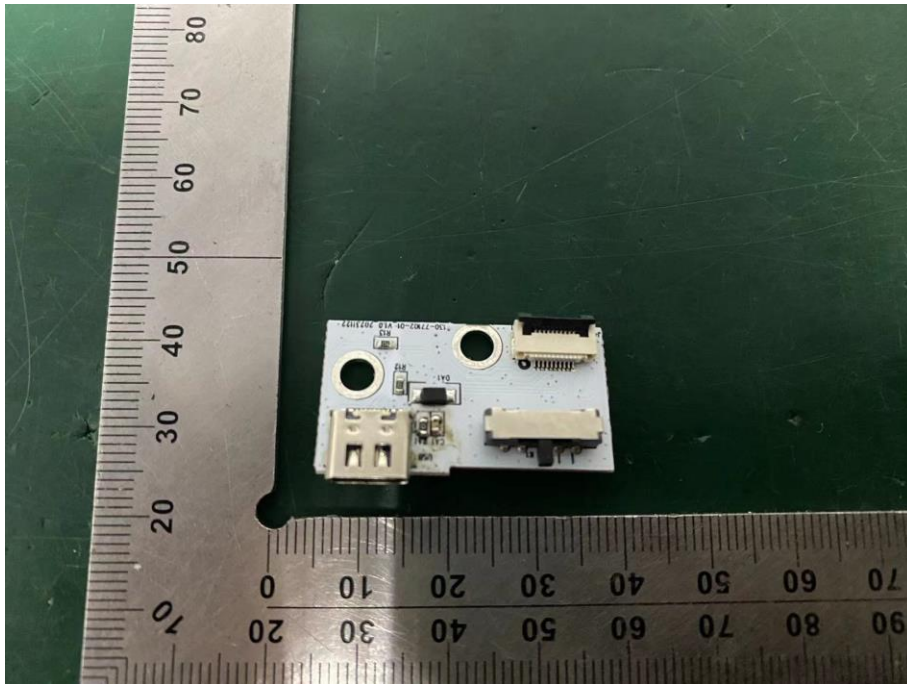
External Photos
M/N: B87



Internal Photos M/N: B87

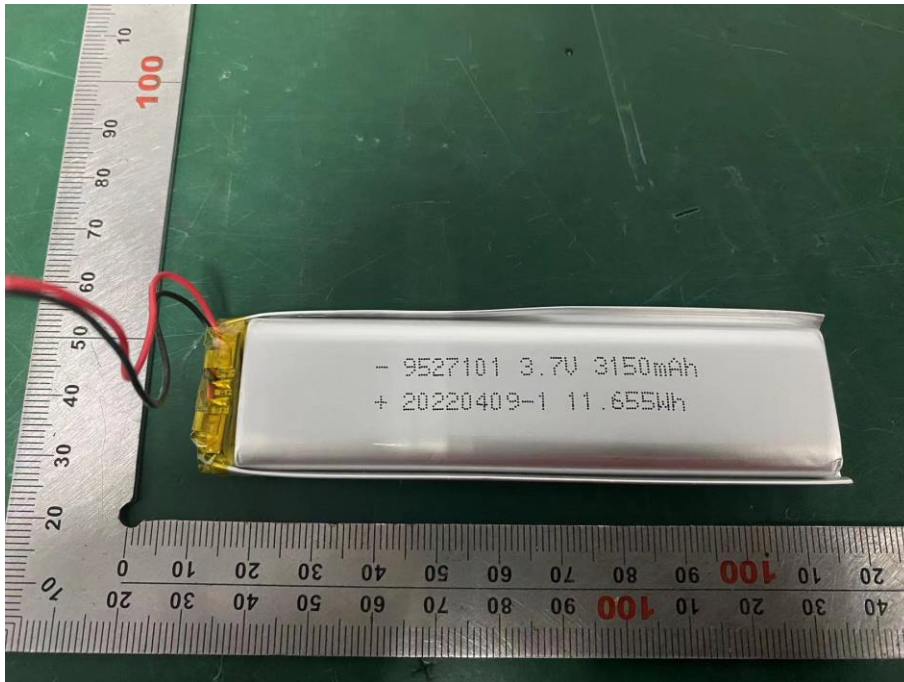


Internal Photos
M/N: B87

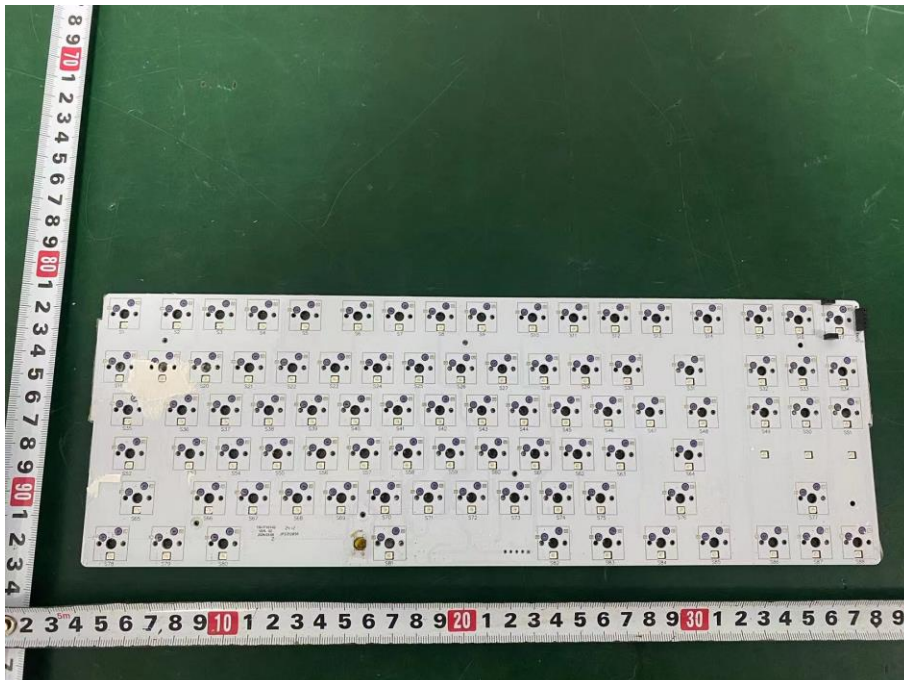
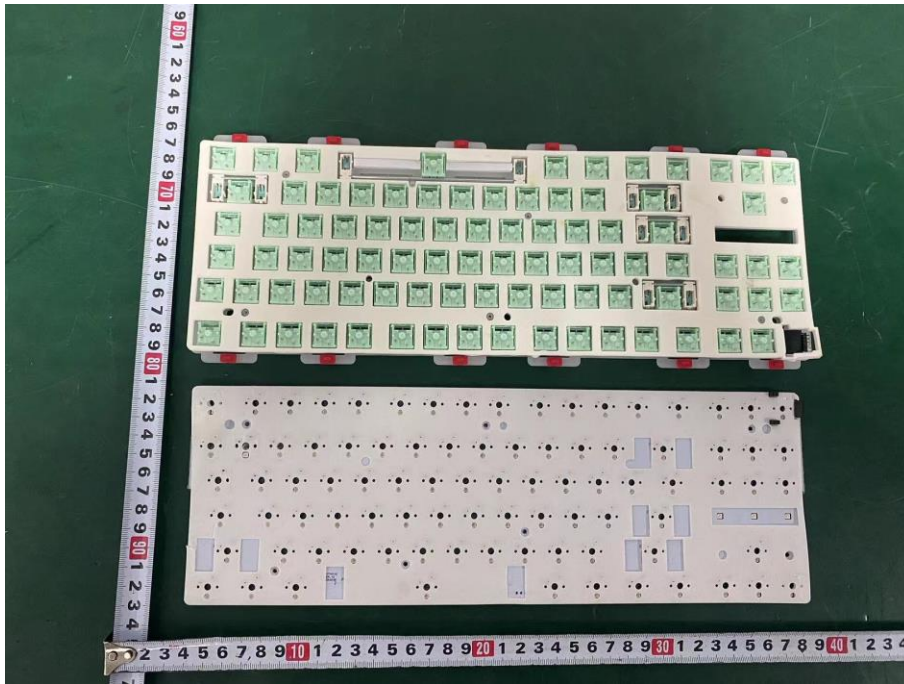


Internal Photos

M/N: B87

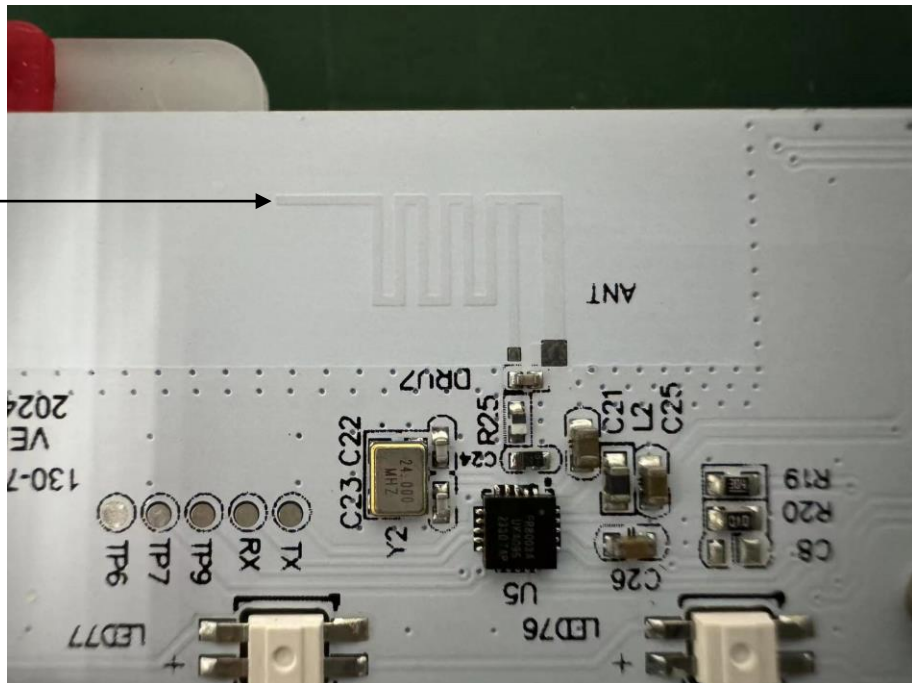
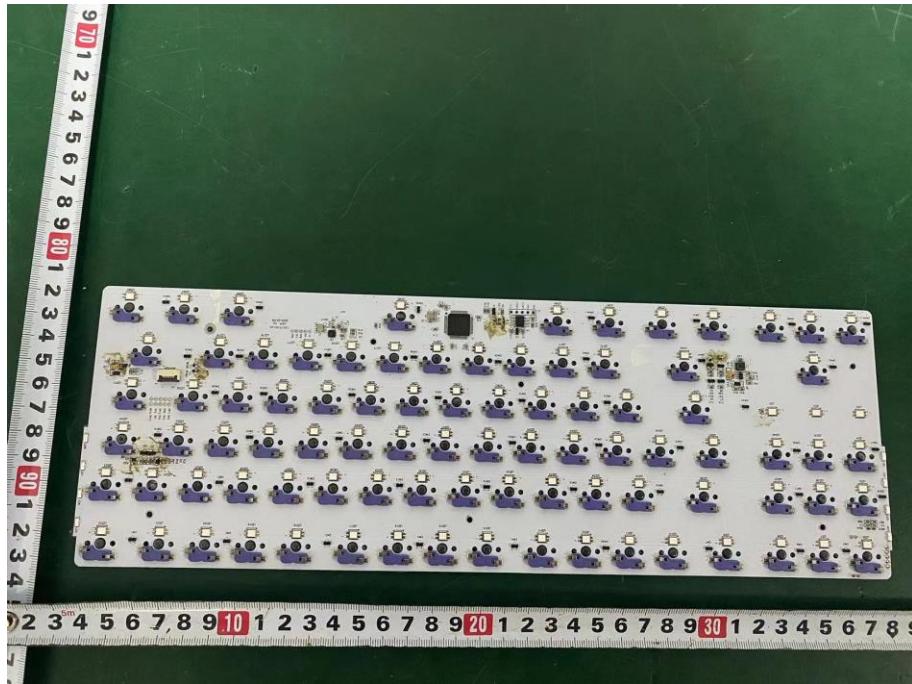


Internal Photos M/N: B87



Internal Photos

M/N: B87



Bluetooth/
2.4G SRD
Antenna

End of Test Report