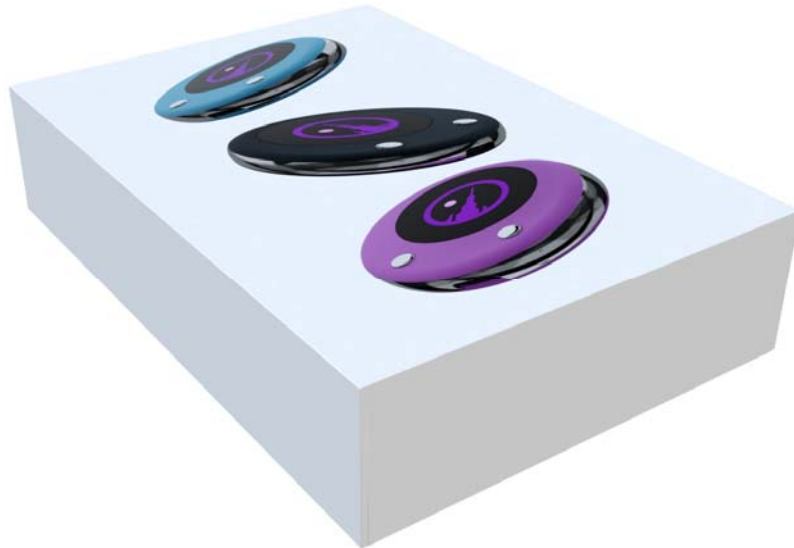


Citadel Wallet User Manual

1.0 Box Contents



Box Top View



Box Bottom View

1.1 Authenticity Seal

Citadel Wallet comes in a box with an Authenticity Seal. Make sure the Seal is intact on both sides before you use the wallet.

1.2 Package Contents

Citadel Wallet package comes with the following items inside:

- The Citadel Hardware Wallet
- 20cm long USB Type C Cable for charging (5V) and communication with the PC
- 2x Mnemonic Phrase Recovery Card
- User Guide Card with QR link to the manual web page

2.0 Wallet Characteristics

- Dimensions
 - 54mm in Diameter
 - 9.5mm in thickness
- Display
 - 1.28" Diameter
 - 240x240 Resolution
 - Full Color
 - Touch Screen
- Mechanical
 - 2 Push Buttons: Left for Power, Right for Next
 - Stainless Steel frame
 - Matte Plastic top and bottom
- Battery
 - 200mAh Rechargeable Li-Ion
- Interfaces
 - Bluetooth 5.3
 - USB C
- Security

- CC EAL 6+ Secure Element
- PIN Protection
- ARM Cortex M33 based Microprocessor
- Trust Zone Enabled
- Device Authentication

3.0 User Instructions

3.1 Power

When wallet is received, it needs to be charged using a USB cable provided with the package. Device has an integrated battery so once charged it can be unplugged and used on battery power if Bluetooth communication interface is used. If USB communication is used with USB cable device will be charging while also communicating with the device connected to.

3.2 Wallet Initial Setup

Power on Citadel Wallet

Press and hold the left button for at least 2 seconds and the device will boot up.

This is the screen you will see when it boots up very first time:



Press Initial Setup and application will jump to next page!

Create a New Wallet

After selecting the Initial Setup, 2 options will be displayed:



Wallet display is touch screen so select one of the options provided. Since this section is focused on creating a new wallet, you will select the New Wallet option.

Choose a Wallet Type

There are 2 Wallet types available on Citadel Wallet:



Touch select the preferred option to move to the next step.

Add Passphrase (Advanced and Optional)

Next you will be given an opportunity to select a passphrase option. Passphrase adds an extra layer of protection to your 12 or 24 Mnemonic Phrase and will be inputted yourself compared to the Mnemonic Words generated by the wallet itself.

Passphrase will be required along with the mnemonic words to recover your account. Even if you have the 12 or 24 word mnemonics but have forgotten or lost your Passphrase you won't be able to recover your keys. So when using this option make sure your are familiar with how it works.



Create a New PIN

Input a 6 digit PIN on the touch pin pad displayed and press the enter touch button under 9.



Verify the new PIN by inputting it again on the next page.



Record the Mnemonic Phrase

12 or 24 word Mnemonic Phrase will be generated by the wallet and displayed on the screen.





Scroll the screen using touch to see all the words.

Once scrolled all the way to the bottom of the page, you will notice an icon pops up on the right bottom corner of the display indicating right physical OK button can be pressed to move to the next page.



Verify Mnemonic Phrase

On the next page you will be prompted to verify some of the words randomly from the phrase presented to make sure user has recorded the words. 4 options will be provided to choose the specific word from:



Once selection is made, press the OK button to move to the next word:



After successfully verifying the words wallet will be created and ready to sign Hedera transactions.

Import Passphrase (!Advanced and Optional)

If you had selected Yes for the Passphrase, You will be prompted to input up to 12 letter passphrase in 2 pages. Each page will allow to import 6 letters and numbers.

On the first page, scroll each box until you have selected all 6 letters/numbers:



Once all 6 have been selected the icon to press the OK button will pop up. Press and move to the next page:



Repeat the same steps for the rest of letters/numbers 7 through 12 and press the OK button:





Verify Passphrase (!Advanced and Optional)

Verification of the passphrase is critical because the whole account recovery will depend on it. Therefore you will be prompted to repeat the same steps and re-enter your passphrase to verify you imported the right letters/words. So follow same steps above to re-enter the passphrase to complete the Wallet Initial Setup:





Home Page:

After correctly following all the steps New Wallet will be created and you will be taken to the home page:



In the following Power ONs, you will need to press the PIN a single time and will directly jump to the Home Page.

3.3 Wallet Settings

You can find the Settings button on Citadel Wallet display after [Initial Setup](#) is completed. It is located on the main page after accessing the device by inputting the PIN.

Settings button location



Settings page has 4 options to select from:



4.0 Pairing

4.1 USB Pairing:

When USB cable is plugged into the PC or Laptop computer, Citadel Wallet USB device will automatically be detected. Supported software application will detect the hardware wallet and provide the User interface for pairing.

4.2 Bluetooth Pairing:

For Bluetooth pairing no USB cable connection is needed but device will need to be fully charged. Here are the steps to follow to successfully pair with a device that is Bluetooth enabled.

- After initializing the device, go to the settings section and select Bluetooth option
- Select enable Bluetooth
- Select Pair with Bluetooth and the device will display a randomly generated pairing PIN
- In your mobile or desktop device look for the Citadel Wallet device and pair with it. After inputting the randomly generated PIN from the pairing device side you will be able to successfully connect with the wallet over Bluetooth.
- Supported software application will detect the hardware wallet and provide the User interface for pairing.

4.3 Transaction Signing:

After successfully setting up the wallet and pairing with the compatible partner's software wallet application, wallet is ready to sign crypto transactions.

- Request to sign a transaction on the software wallet side
- Transaction is sent to the hardware wallet
- Hardware wallet deciphers the transaction and displays it to the user
- User approves the transaction
- Transaction is then sent to the secure element on the hardware wallet to final sign and verify
- Signed transaction is sent back to the software wallet over Bluetooth or USB
- Software wallet submits it to the crypto network

FCC Compliance Statement

This device complies with part 15 of the FCC Rules. Operation is subject to the following two conditions:

(1) this device may not cause harmful interference, and (2) this device must accept any interference received, including interference that may cause undesired operation.

CAUTION: The grantee is not responsible for any changes or modifications not expressly approved by the party responsible for compliance. Such modifications could void the user's authority to operate the equipment.

NOTE: This equipment has been tested and found to comply with the limits for a Class B digital device, pursuant to part 15 of the FCC Rules. These limits are designed to provide reasonable protection against harmful interference in a residential installation. This equipment generates, uses, and can radiate radio frequency energy, and if not installed and used in accordance with the instructions, may cause harmful interference to radio communications. However, there is no guarantee that interference will not occur in a particular installation. If this equipment does cause harmful interference to radio or television reception, which can be determined by turning the equipment off and on, the user is encouraged to try to correct the interference by one or more of the following measures:

- Reorient or relocate the receiving antenna.
- Increase the separation between the equipment and receiver.
- Connect the equipment into an outlet on a circuit different from that to which the receiver is connected.
- Consult the dealer or an experienced radio/TV technician for help.

Canadian Compliance Statement

This device contains license-exempt transmitter(s)/receiver(s) that comply with Innovation, Science and Economic Development Canada license-exempt RSS(s). Operation is subject to the following two conditions:

- (1) This device may not cause interference.
- (2) This device must accept any interference, including interference that may cause undesired operation of the device.

L'émetteur/récepteur exempt de licence contenu dans le présent appareil est conforme aux CNR d'Innovation, Sciences et Développement économique Canada applicables aux appareils radio exempts de licence. L'exploitation est autorisée aux deux conditions suivantes :

- 1) L'appareil ne doit pas produire de brouillage;
- 2) L'appareil doit accepter tout brouillage radioélectrique subi, même si le brouillage est susceptible d'en compromettre le fonctionnement.