

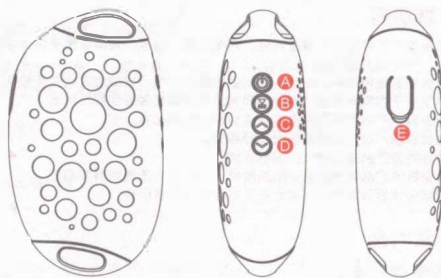
PRODUCT INFORMATION

Volume output: 5 Watts

The total peak output: 6 Watts at <10% THD
Decibels: 75dB
Operating frequency: 100HZ-20KHZ

Charging voltage: USB or AC / DC adapter 5V
Power Capacity: 600mAh
Battery charging time: 1 hour

Continuous playback time: up to 4hrs (different environments vary)
Speaker Specifications: 120*65*30 (mm) 95g



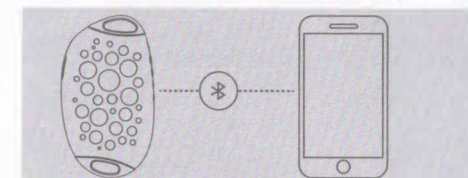
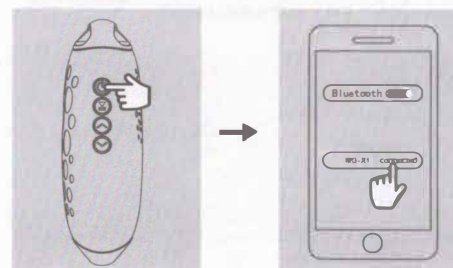
A: ON/OFF / Bluetooth Mode/FM Mode B: Play/Pause/Answer key/Reject Key /Redial
C: Volume+ / Previous D: Volume- / Next E: USB Charging Port

PRODUCT FEATURES

- HD Voice, wireless Bluetooth
- Support free talking via wireless Bluetooth
- Fashionable design, dustproof & shockproof, perfectly suit outdoor leisure activity
- Large capacity polymer battery inside, which can work 4H continuously
- Humanized sling design, passive radio sound system guarantees an outstanding voice

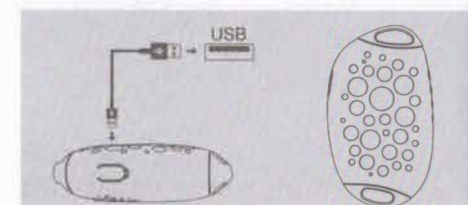
OPERATING INSTRUCTIONS

- Power on: Press the power on button for 3s (Voice prompt: Hello, Bluetooth Mode)
- Power off: Press the power off button for 3s (Voice prompt: Power off)
- Pairing: A. turn on the Bluetooth headset, it will connect those devices which has been connected before, if fail to connect the devices, then the Bluetooth headset will enter into auto-pairing mode
- Finish pairing: (Voice prompt: Click)
- Connect the last device: When the Bluetooth is off, press the power button for 3s it will connect the last device that the Bluetooth connected automatically (Voice prompt: Click)



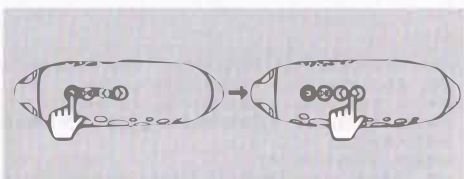
BATTERY INDICATOR

- Low battery alarm: When the battery is too low, the voice prompt: No battery, please be charged. Repeat the prompt, automatically enter the shutdown after 30 seconds
- Charge: The red light will go on when charging, and go off when fully charged

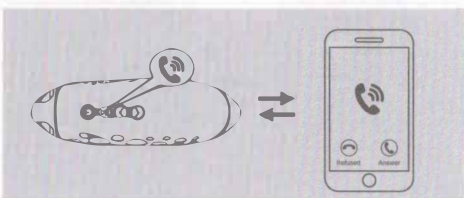


• Radio mode

The default mode is Bluetooth mode after turning the Bluetooth headset on, press "ON/OFF" button for 3S, then it will enter into radio mode; Long press "Play" button, flash blue light, enter the automatic search mode; Press the volume button to change the channel.



• Phone mode



Short press the "play" to answer the calling ▲
Press the "Play" for twice to radial the calling ▲

Long press the "Play" to refuse the calling ▲

• Reset Button



If the operation is frequent, there is a crash phenomenon, you can click the reset button to restore the initial settings. ▲

CAUTIONS

- To avoid rain, high temperature or strong magnetic fields, please put this product in a cool, ventilated and dry place. Not allowed to beat this product.
- Do not put the product near heat sources, such as radiator, heater, stove or other heating elements.
- Use a clean dry cloth rather than any diluents or volatile liquid to clean this product.
- Do not expose the product in direct sunlight.
- Do not expose the product in direct sunlight too long.
- To avoid scratching or damaging, please do not contact with sharp or hard objects.
- Do not attempt to open this product or remove the battery, because it does not include any repair kit.

PRECAUTIONS

- Charging cable 1 piece
- Bluetooth Speaker 1 piece
- Instruction for use 1 piece
- Hook 1 piece

WARRANTY

This product is covered under warranty for a period of one year from the date of sale limited to normal use and maintenance of the machine parts, materials and functions. Problems and failures verified upon further identification, will be provided free repair and replacement parts.

▲ Warm prompt: such as too frequent operation machine a little crash phenomenon can re-charge activate again!

LIMITED TO THE FOLLOWING

- Equipment and components beyond the warranty period.
- Fail to provide reasonable routine and documented maintenance, and/or improper maintenance.
- Product failure due to improper usage and/or application such as misuse, abuse, neglect, alteration, faulty installation, power line surge of modification.
- Product failure due to acts of nature disaster, fire, flood or casualty

WARRANTY FEEDBACK FORM (TICK OFF)

A. Unable to connect devices B. Speakers no sound C. Key subsidence
D. Light does not flash E. Can not be charged F. Others

Buying Time

Dealers of sale

Time of problems

User's Contact info

Designed & Produced by: Shenzhen KABADDI Technology CO., Ltd
Add: 1F, Bld1, Xin Yong Feng Industrial Park, Bai Yun Shan New Village,
Da Lang Street, Long Hua District, Shenzhen
A3A064-065, Guang Xun Communication Market, Bao Hua Building Block A, Hua Qiang
North, Fu Tian District, Shenzhen
Service Hotline: +86 755 2311 5935

This device complies with Part 15 of the FCC Rules. Operation is subject to the following two conditions: (1) this device may not cause harmful interference, and (2) this device must accept any interference received, including interference that may cause undesired operation

NOTE: This equipment has been tested and found to comply with the limits for a Class B digital device, pursuant to Part 15 of the FCC Rules. These limits are designed to provide reasonable protection against harmful interference in a residential installation. This equipment generates, uses and can radiate radio frequency energy and, if not installed and used in accordance with the instructions, may cause harmful interference to radio communications. However, there is no guarantee that interference will not occur in a particular installation.

If this equipment does cause harmful interference to radio or television reception, which can be determined by turning the equipment off and on, the user is encouraged to try to correct the interference by one or more of the following measures:

- Reorient or relocate the receiving antenna.
- Increase the separation between the equipment and receiver.
- Connect the equipment into an outlet on a circuit different from that to which the receiver is connected.
- Consult the dealer or an experienced radio/TV technician for help.

Warning: changes or modifications not expressly approved by the party responsible for compliance could void the user's authority to operate the equipment

The devices has been evaluated to meet general RF exposure requirement , the device can be used in portable exposure condition without restriction