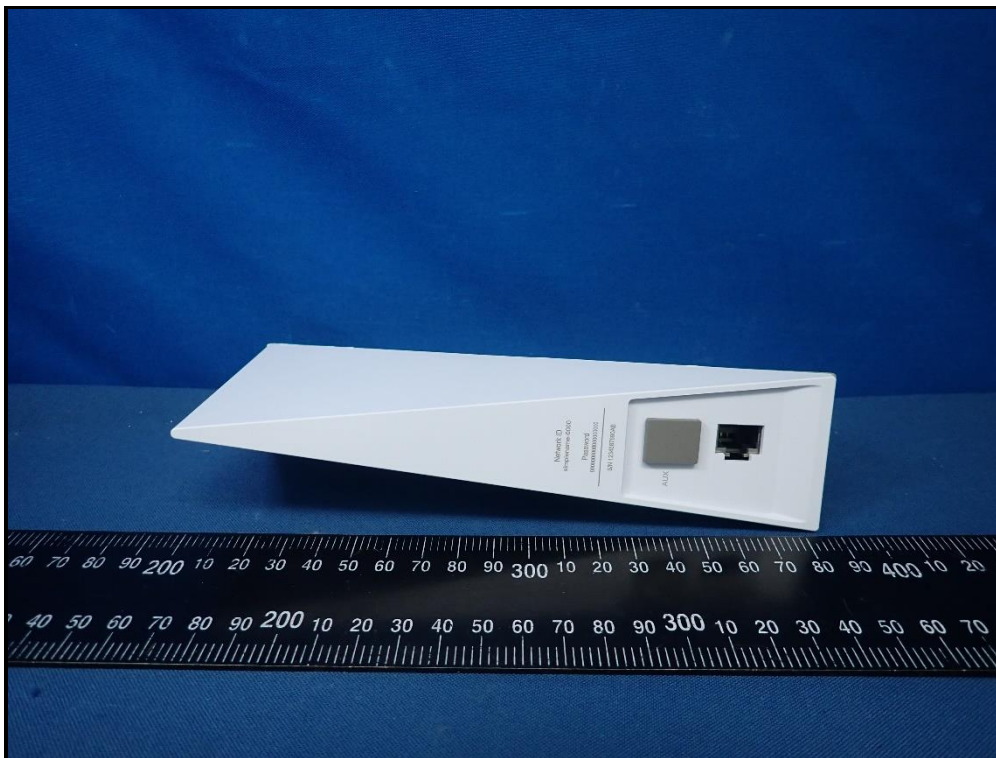
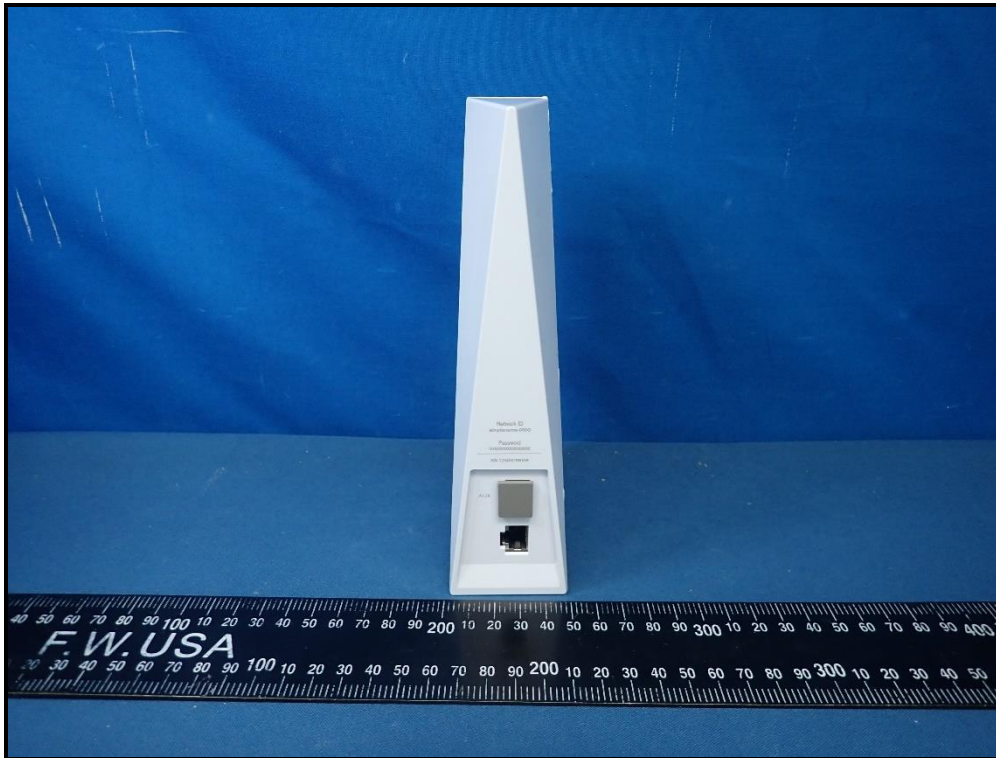
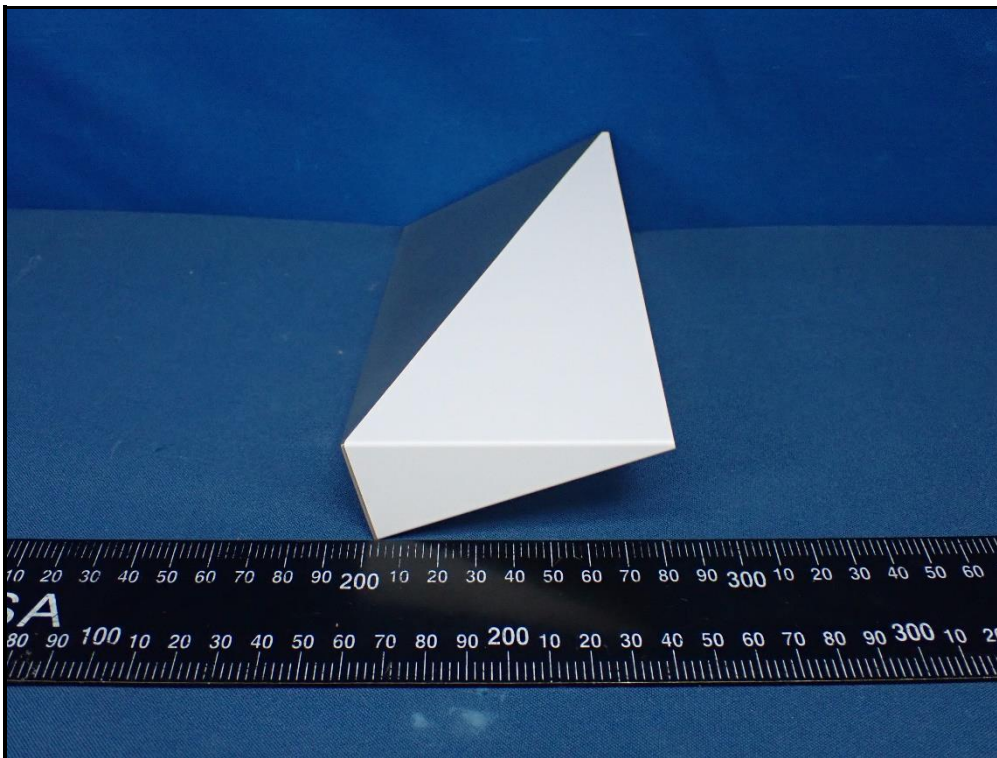
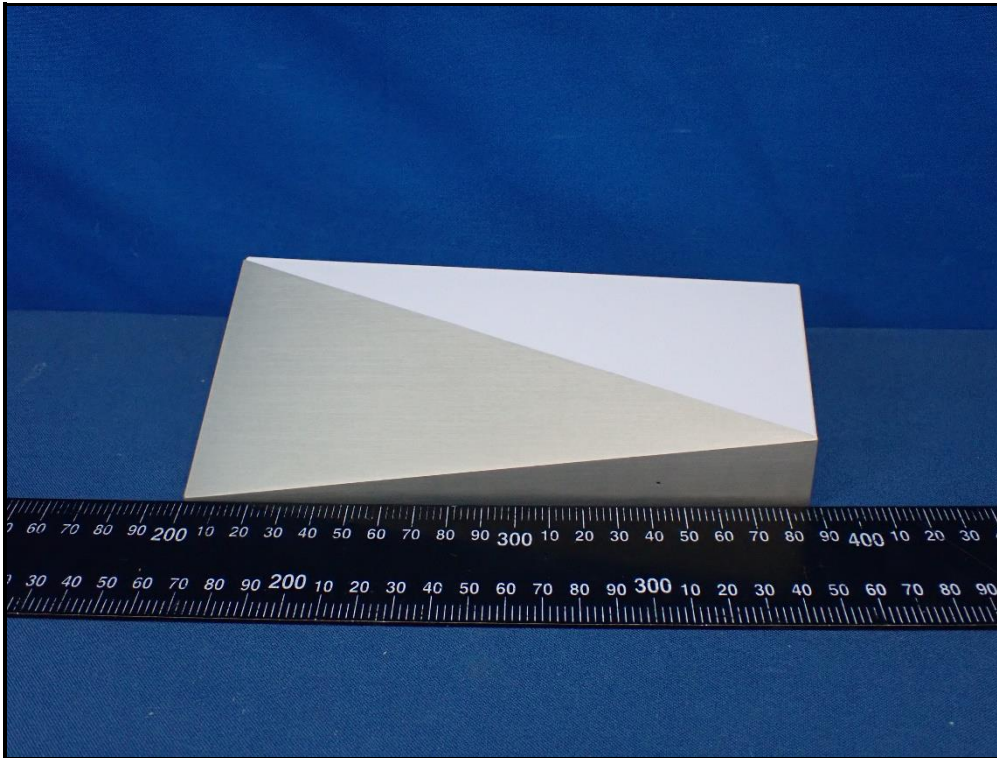


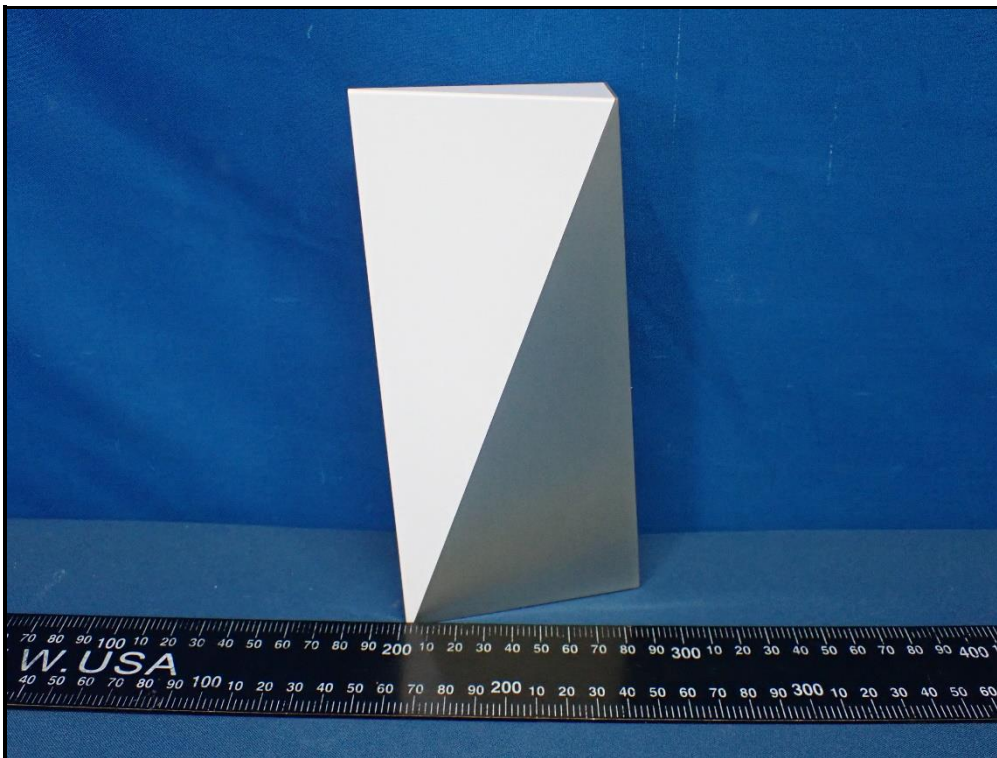
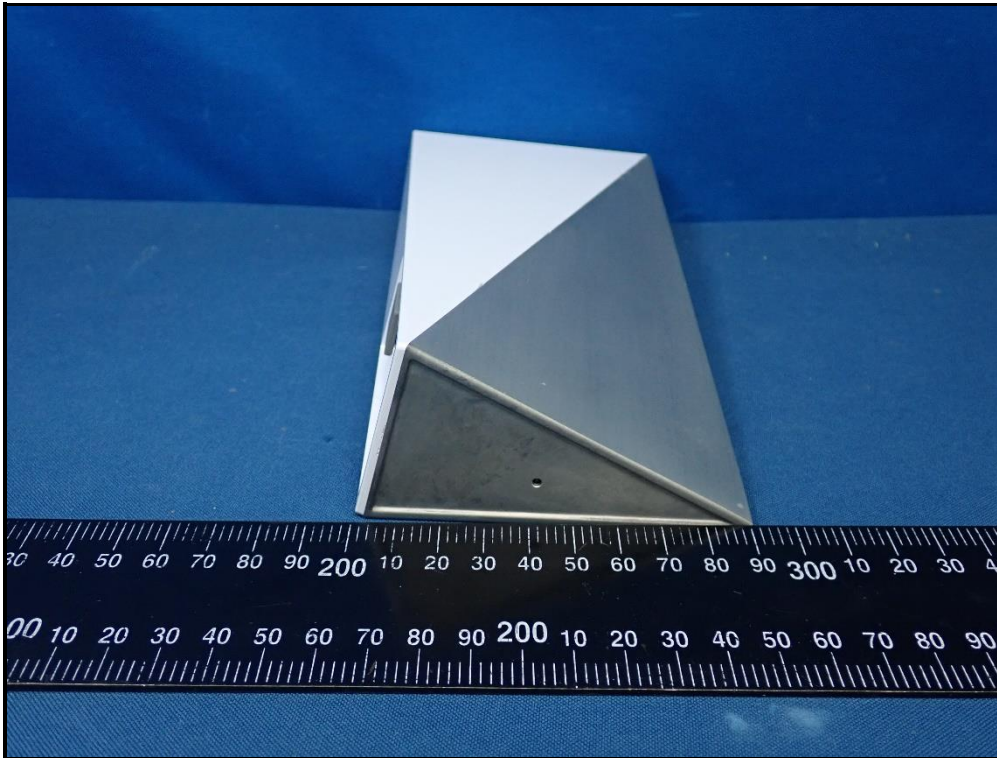
## CONSTRUCTION PHOTOS OF EUT

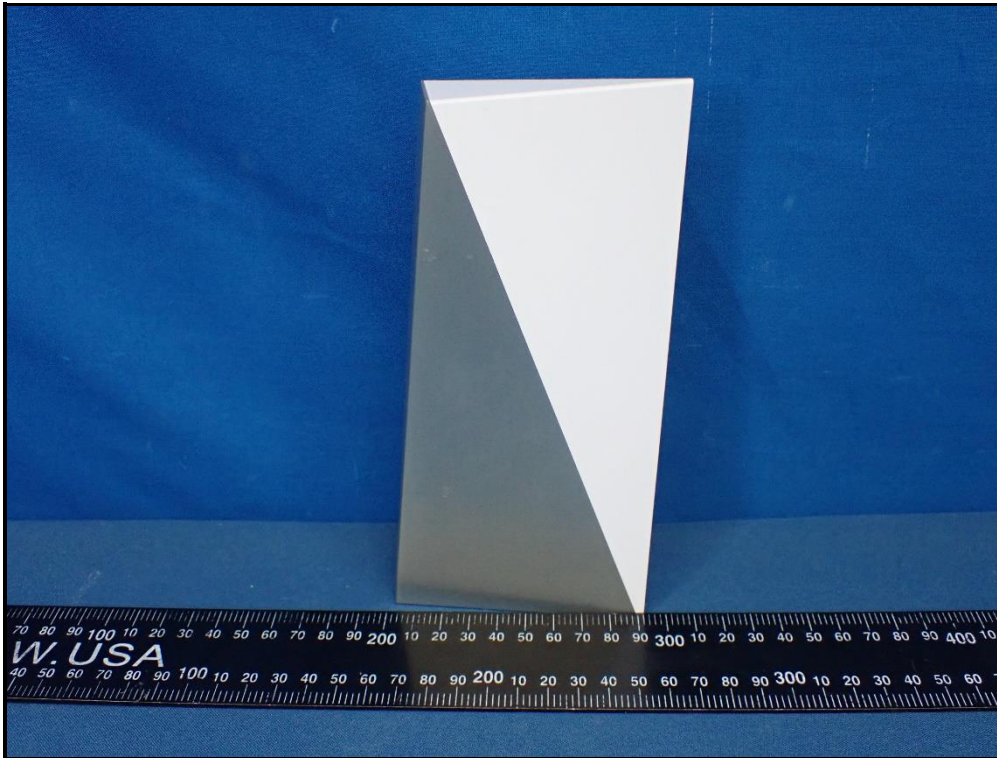
1st crystal+Compaq PCB  
(label: NOR)



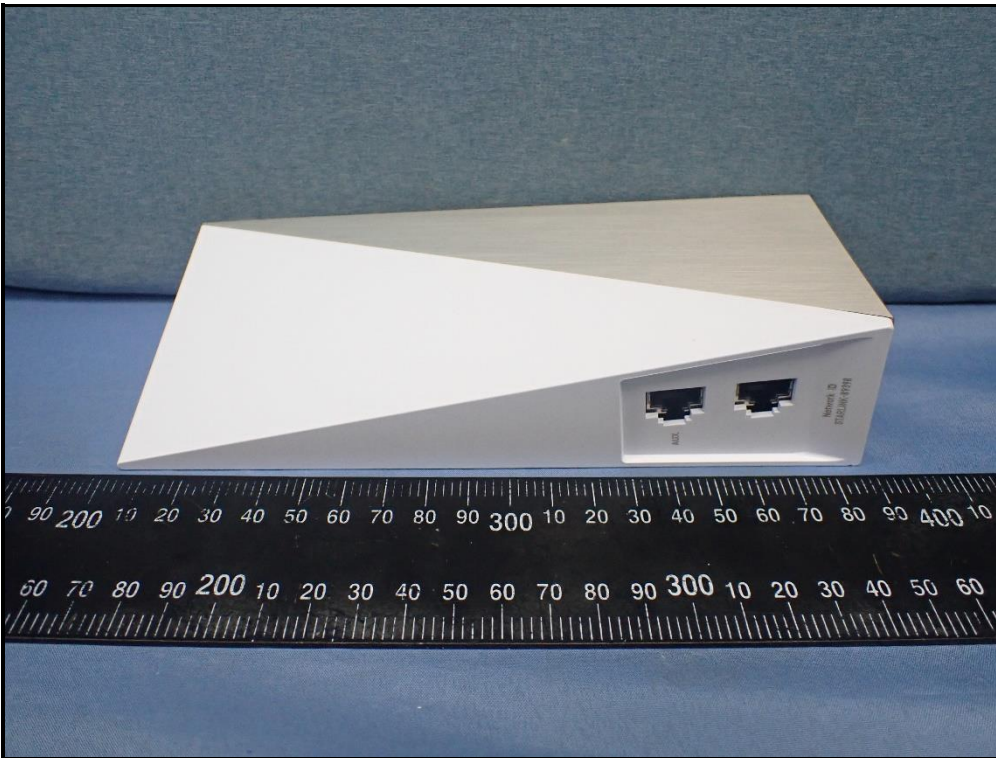
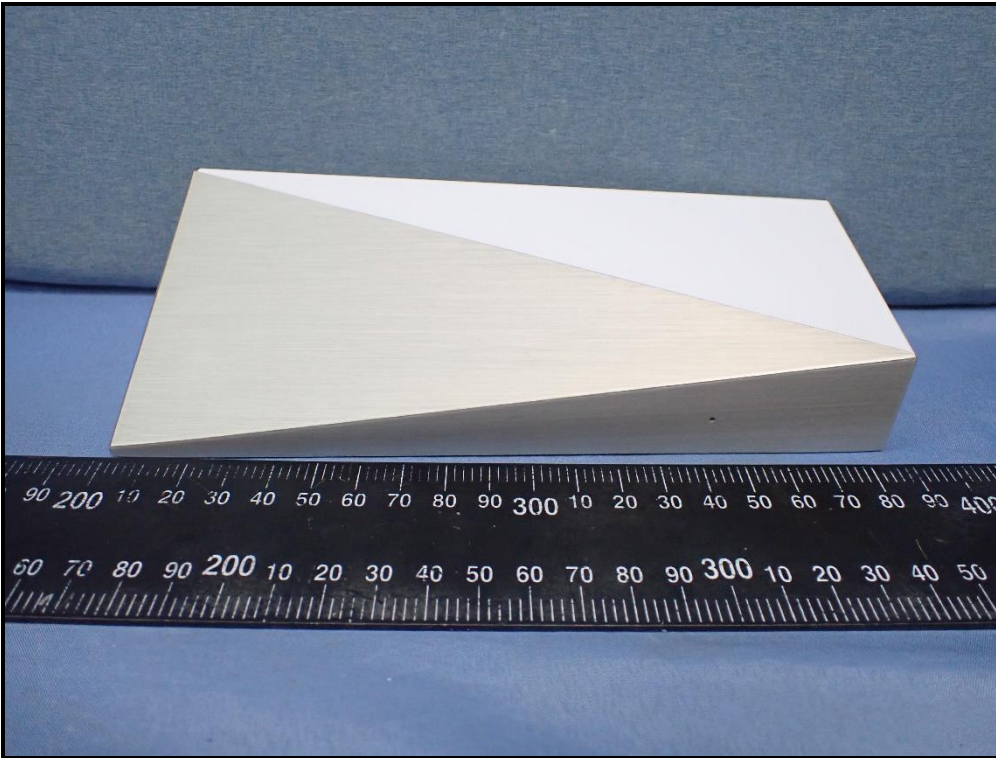






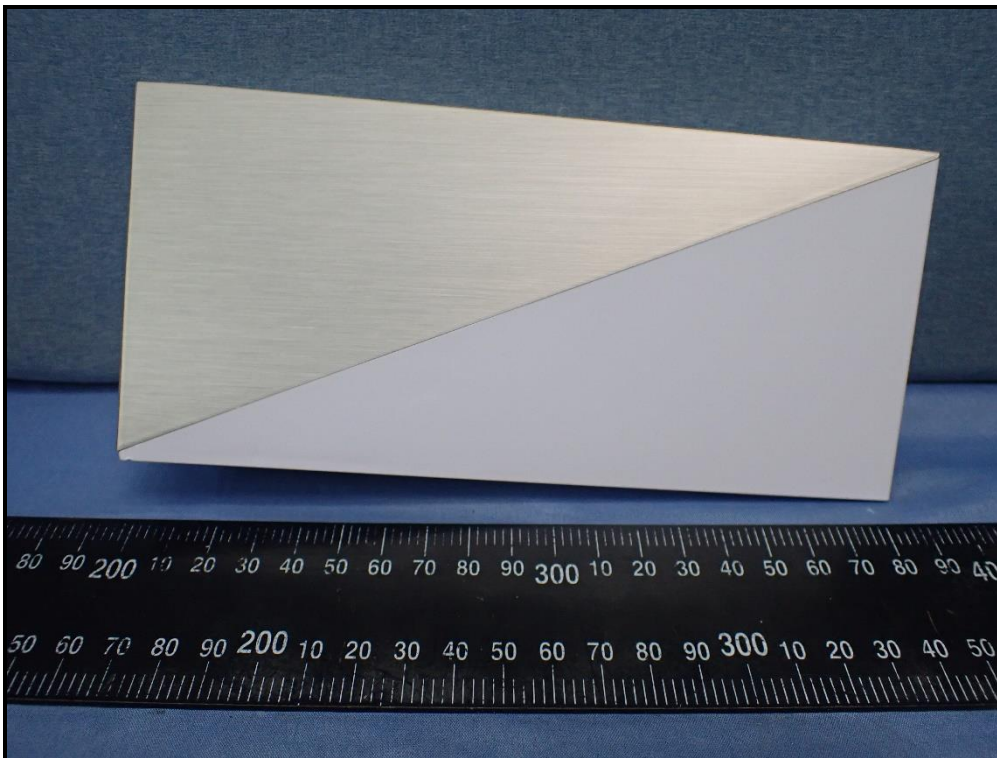
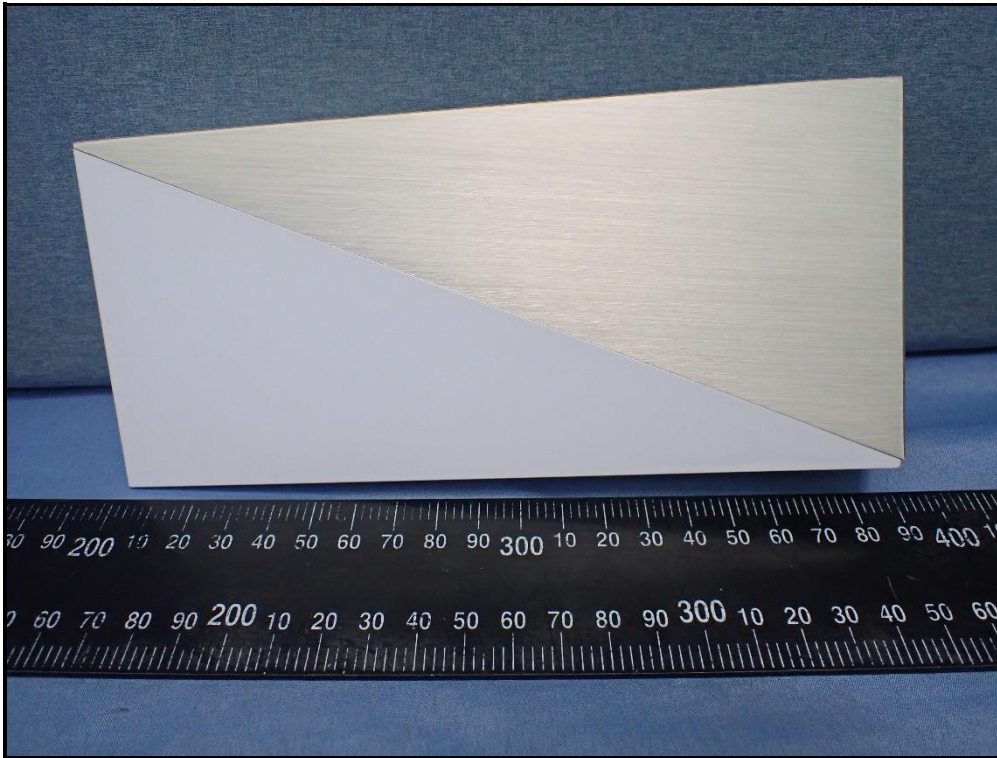


2nd Source+ Compaq PCB  
(label: BATCH)





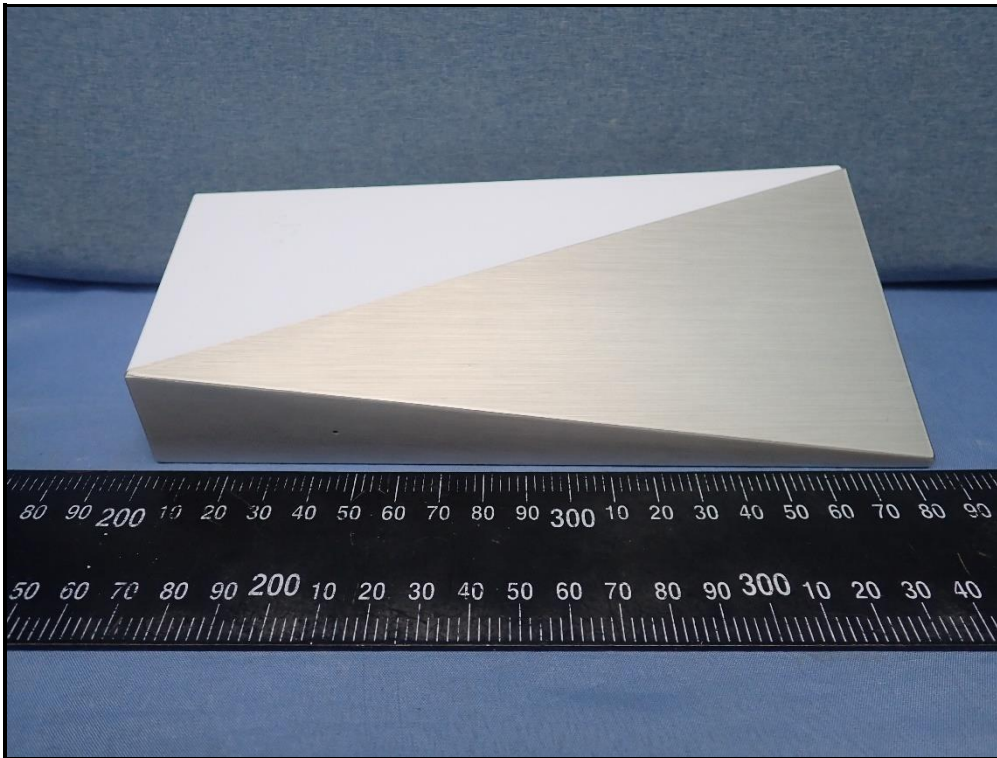
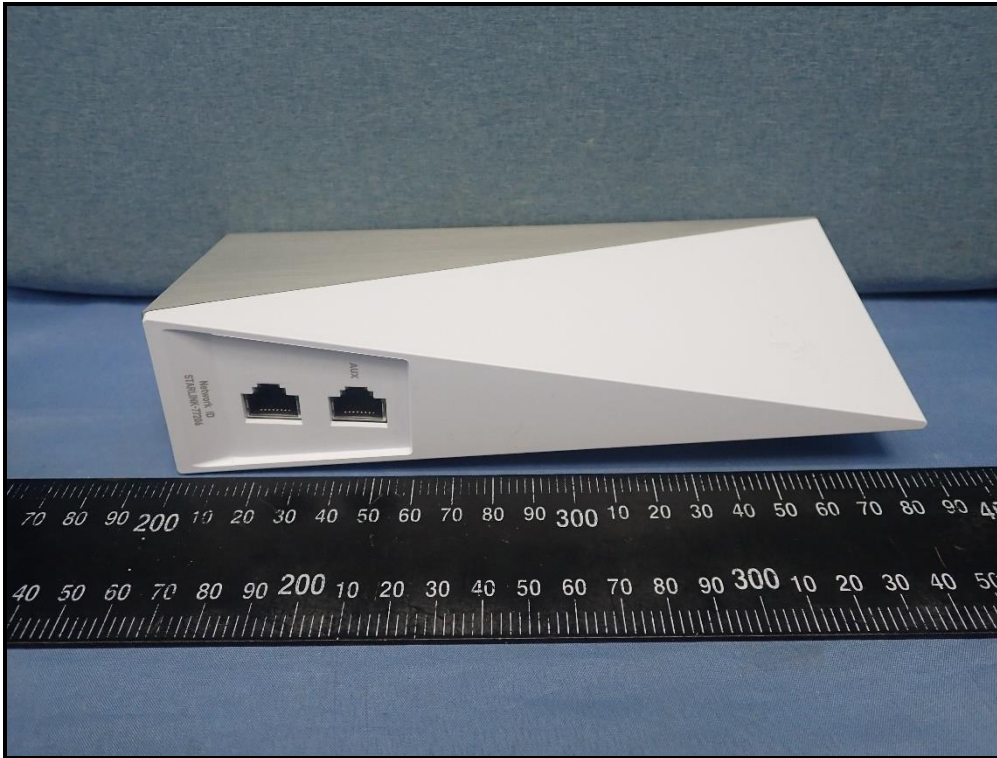






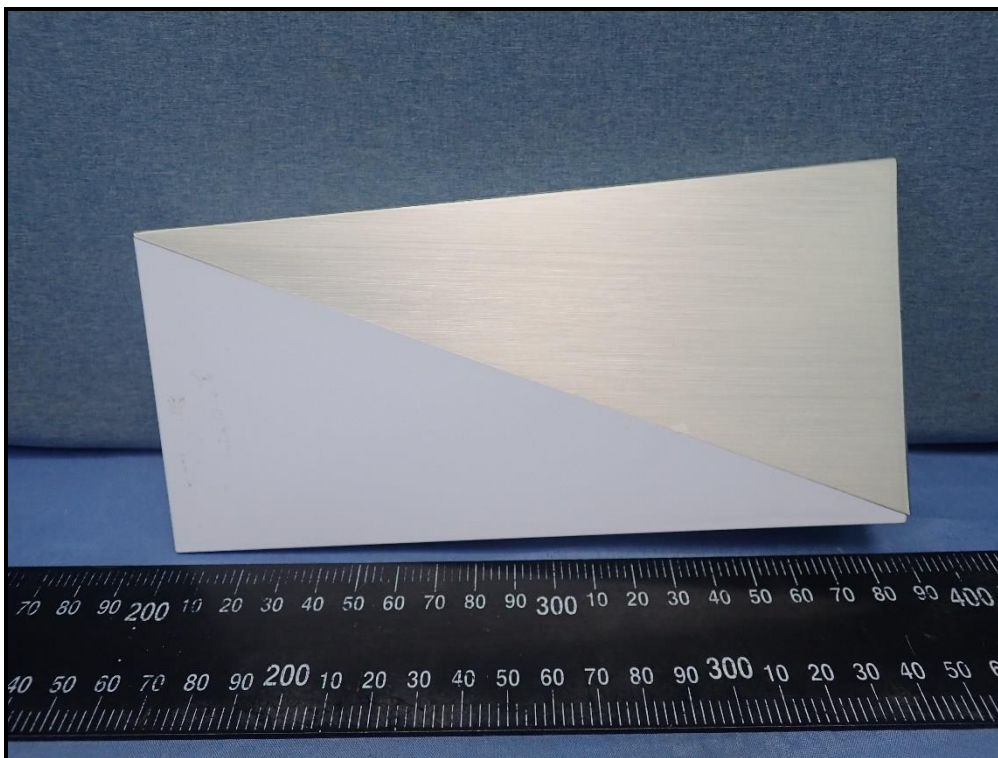
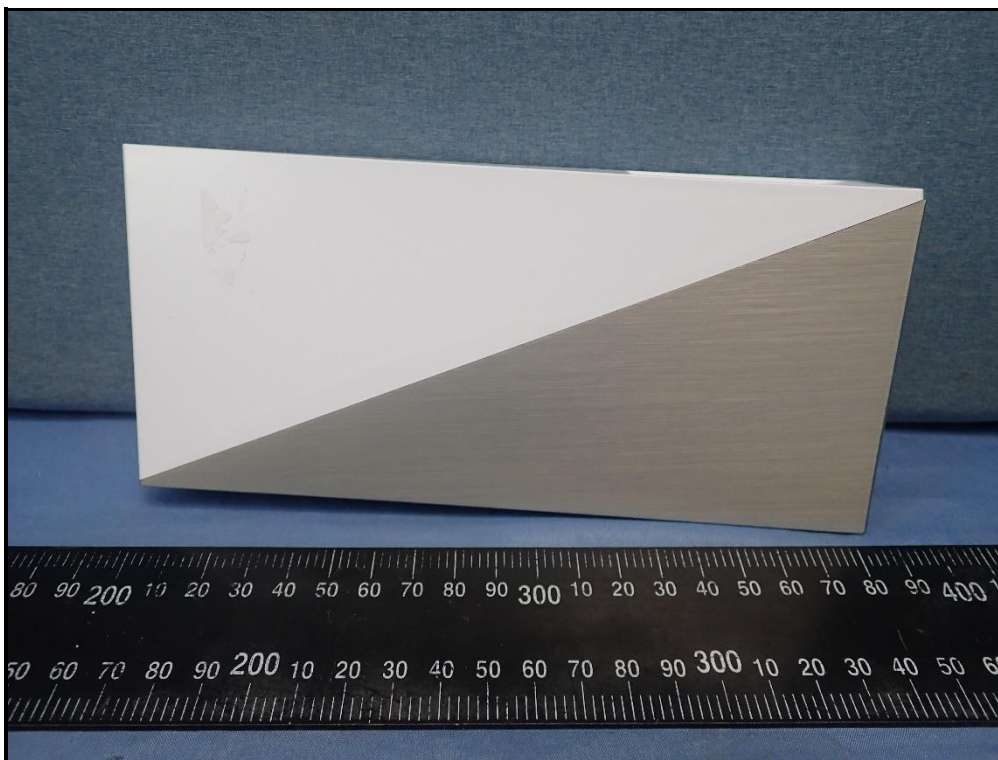


CPC PCB+ 2nd crystal  
(label: CPC)





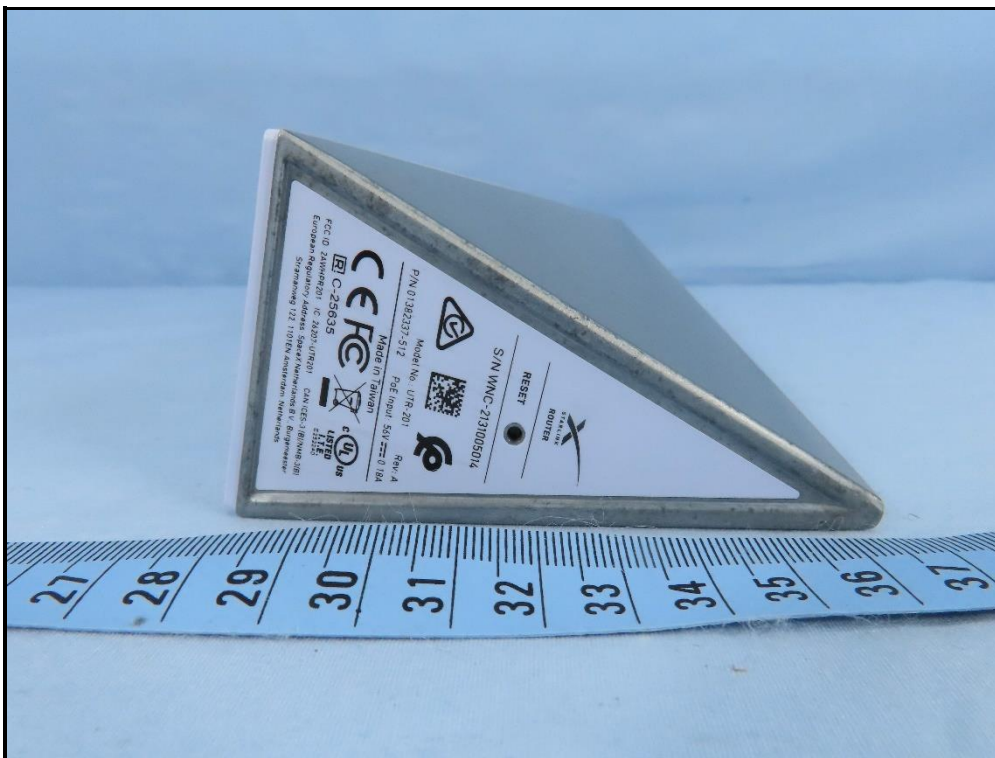
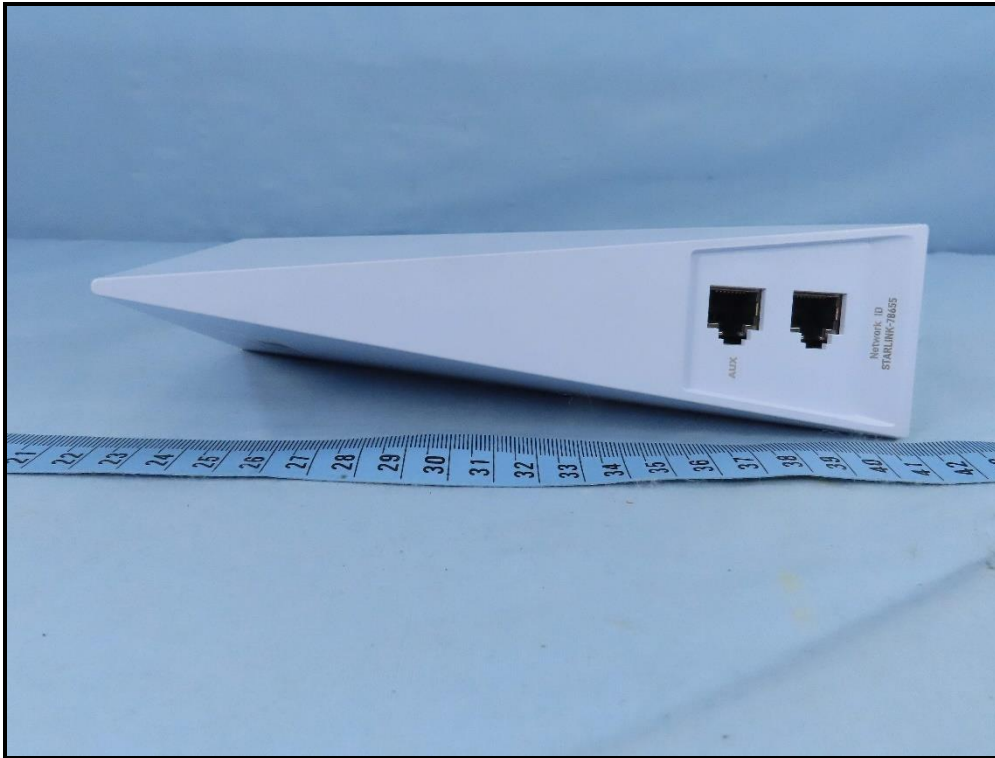


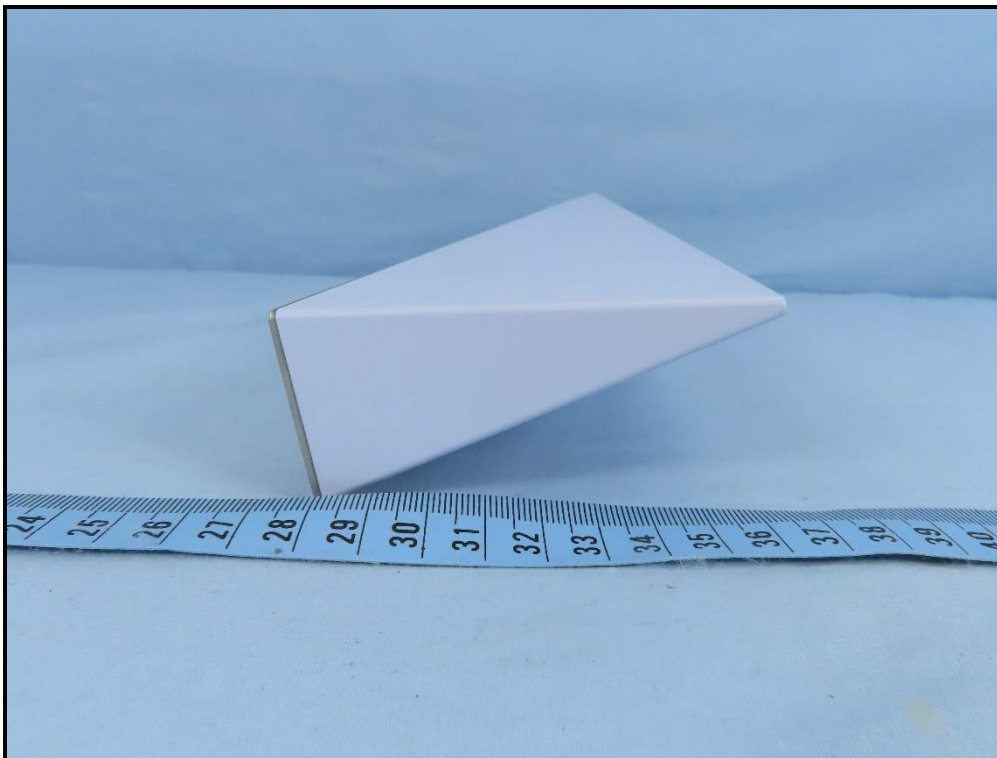
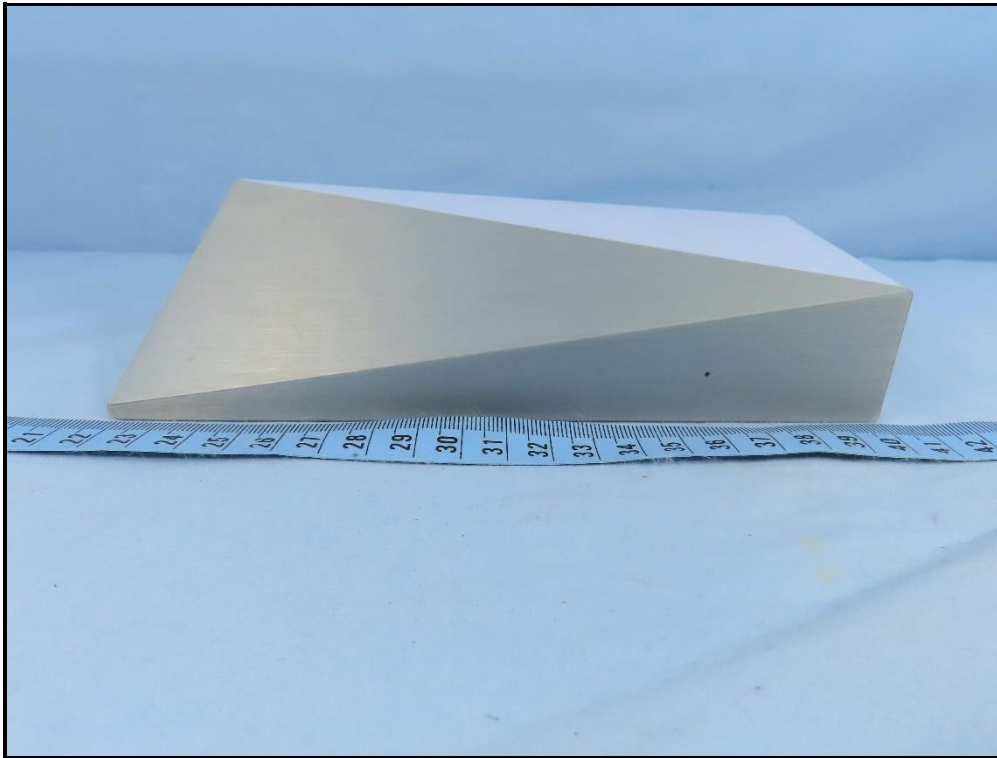




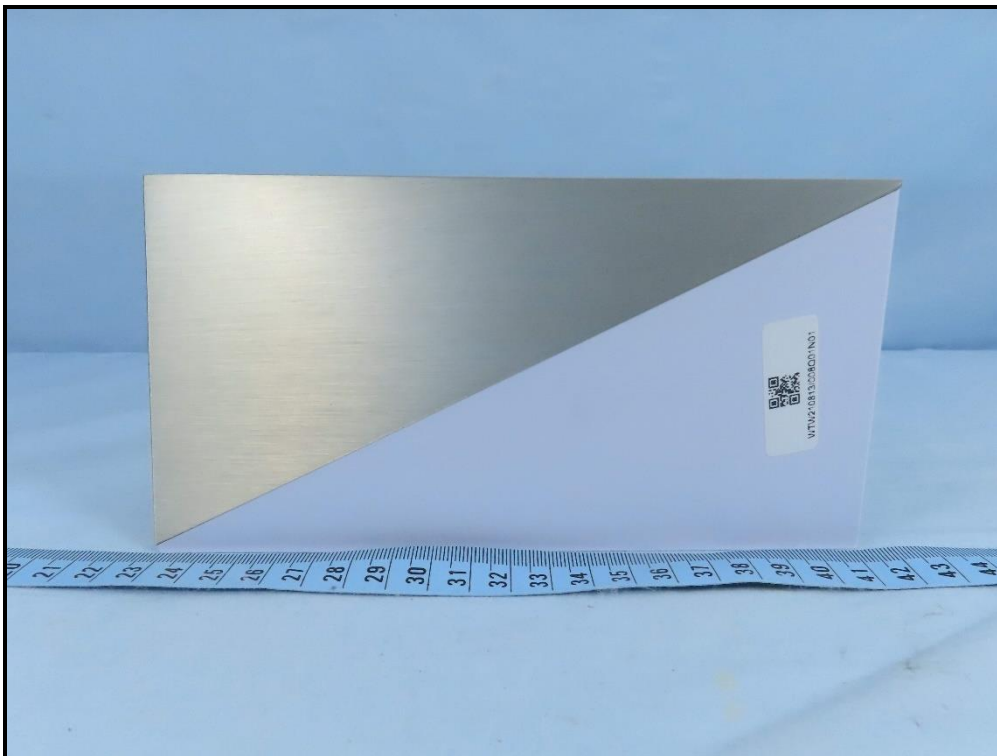
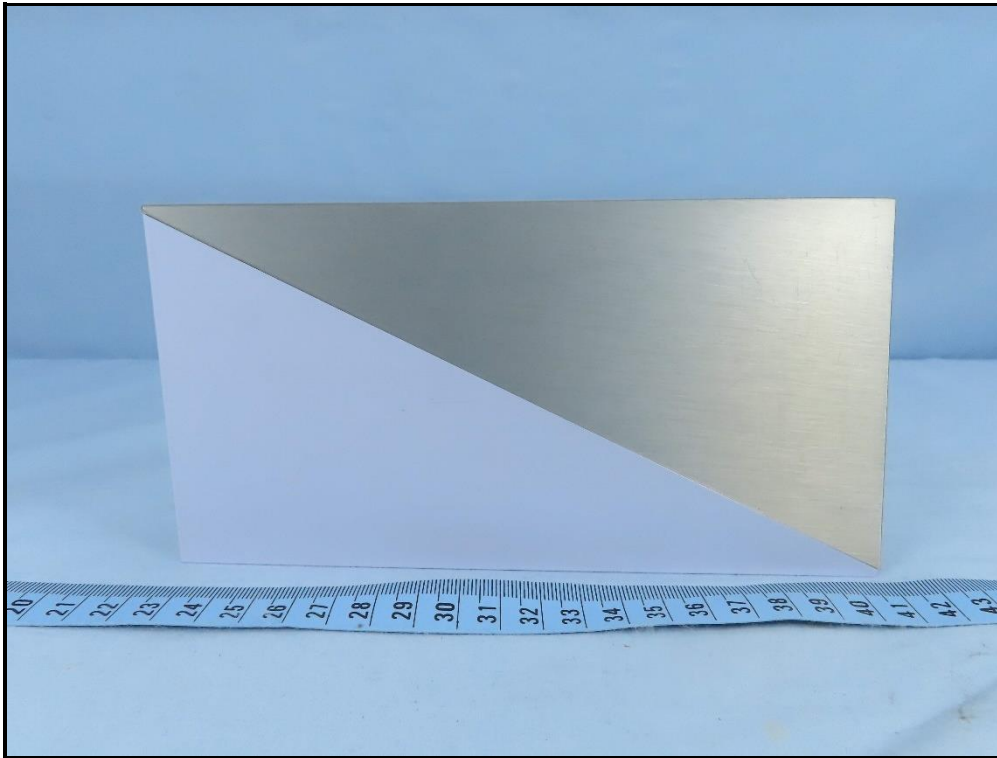


PCB 2ND source+1st crystal

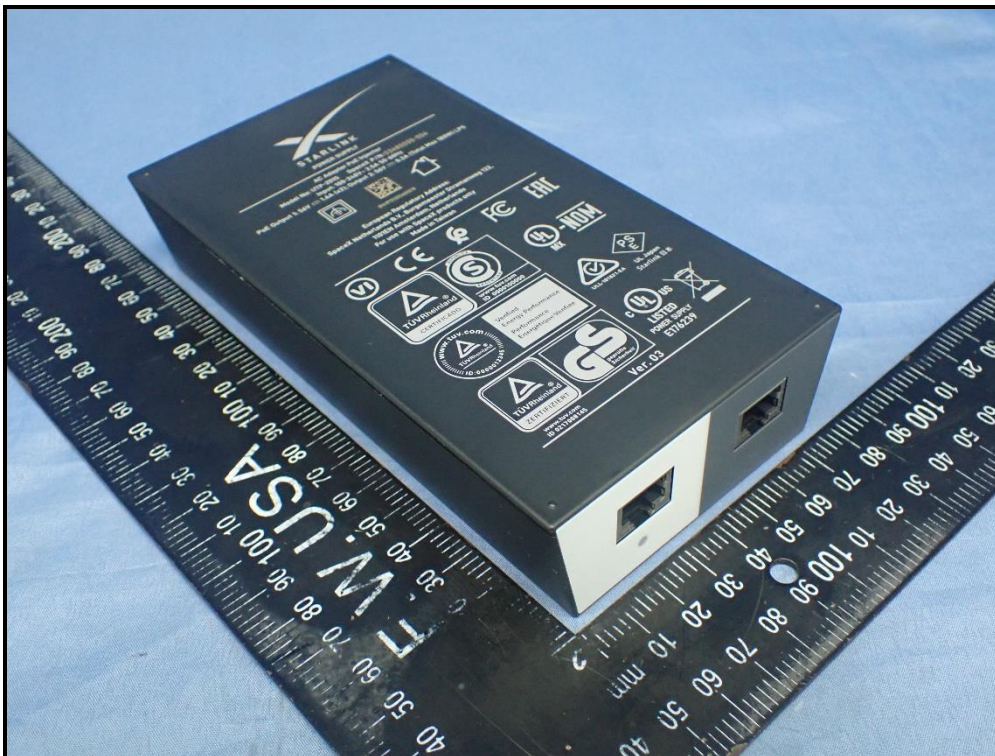








Model: UTP-201S







**STARLINK**  
POWER SUPPLY

---

**AC Adapter PoE Injector**  
**Model No: UTP-201S    SpaceX P/N: 03480000-504**  
**Input: 100-240V~ 2.5A 50-60Hz**  
**PoE Output 1: 56V --- 1.6A (x2); Output 2: 56V --- 0.3A (Total Max 180W) LPS**







SN:SY2122CA00018


**European Regulatory Address:**  
**SpaceX Netherlands B.V., Burgemeester Stramanweg 122,**  
**1101EN Amsterdam, Netherlands**  
**For use with SpaceX products only**

For use with SpaceX products only  
Made in Taiwan





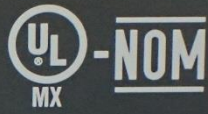





www.tuv.com  
ID 0000100000




www.tuv.com  
ID 0000100000






www.tuv.com  
ID 0000012345


Verified Energy Performance  
Performance Energetique Verifiee



ULL-101821-EA    UL Japan Starlink 日本



www.tuv.com  
ID 0217008145



geprüfte Sicherheit



Ver. 03





