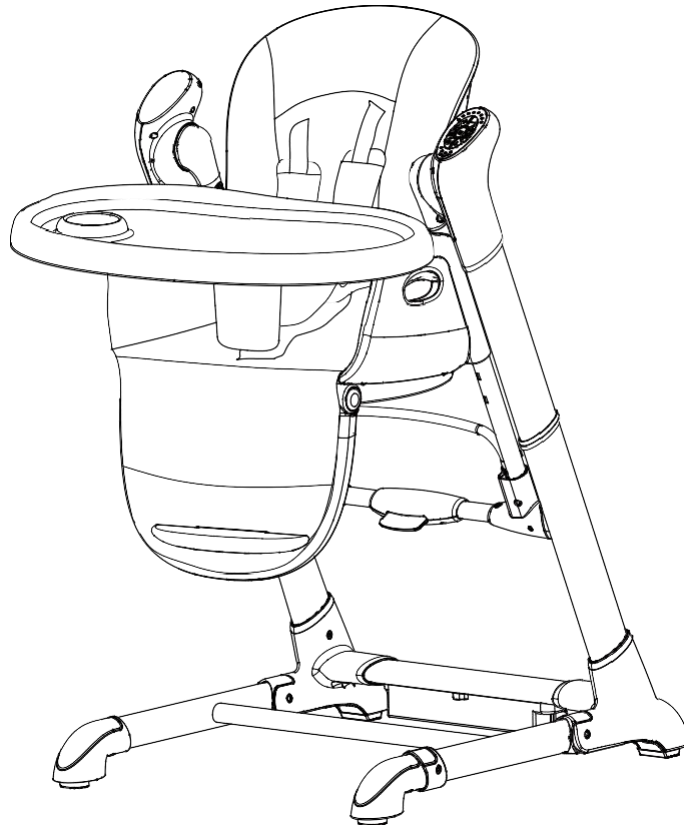


USING INSTRUCTION OF HIGH CHAIR

IMPORTANT READ CAREFULLY AND KEEP FOR FUTURE REFERENCE

please read the instruction of high chair carefully before using and keep it for future reference. It may cause injury to the infant if operating the chair not according to the instruction



Production name: Multi-functional high dining chair

Company name: Zhongshan City togyibaby Co., Ltd.

Address: #5 Yucheng 3rd Road, Taifeng Industrial Zone, Xiaolan Town, Guangdong Province

FAX: 86-0760-22185706

Hotline: 400—801—3819 Mode:

TY818B

Standard: EN14988-2017/EN16232-2013

Gross weight:

Net weight:

Carton size(outside):

contents:

I、Parts list	1
II、Assembly instructions	2~5
III、Operating instructions	6~18
IV、Warning	19
V、Care and clean	20

I .Parts list


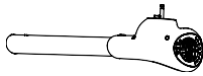
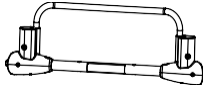
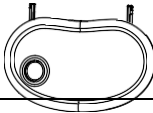
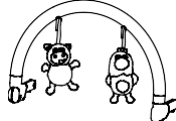


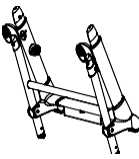

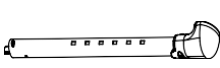

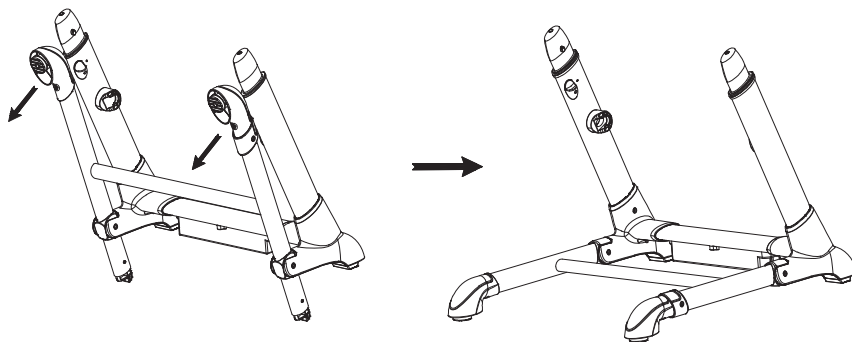
Photo	Name	Quantity
	Seat cover	1 pc
	Main model	1 pc
	Lifting arm	1 pc
	Tray	1 pc
	Toy bar	1 pc
	Safety catch	1 pc

Photo	Names	Quantity
	Main model	1 pc
	Under-frame	1 pc
	Footrest base	1 pc
	Left lifting arm tube	1 pc
	Right lifting arm tube	1 pc
	Manual+ Adapter	1 pc

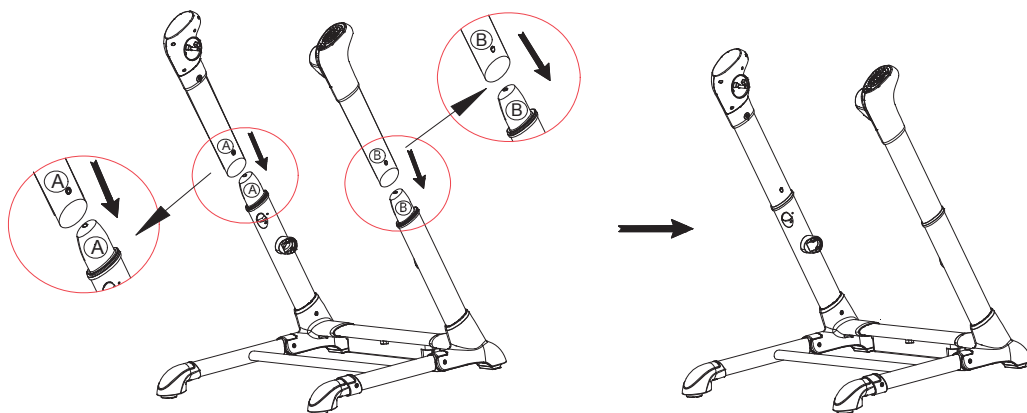
II. Assembly instructions

WARNING! It should be installed by adult.

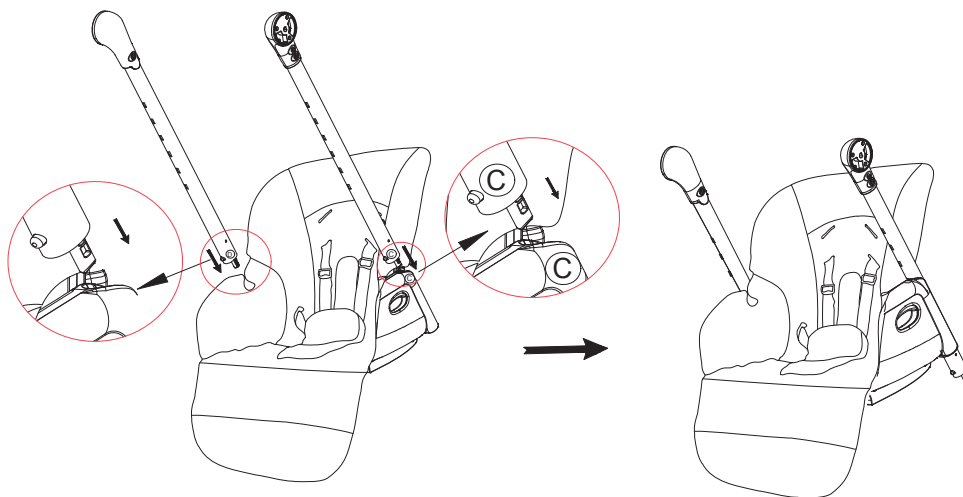
1、



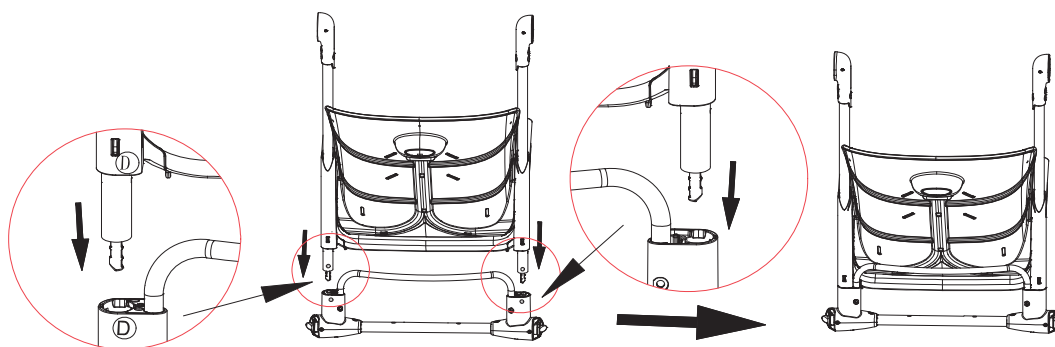
2、



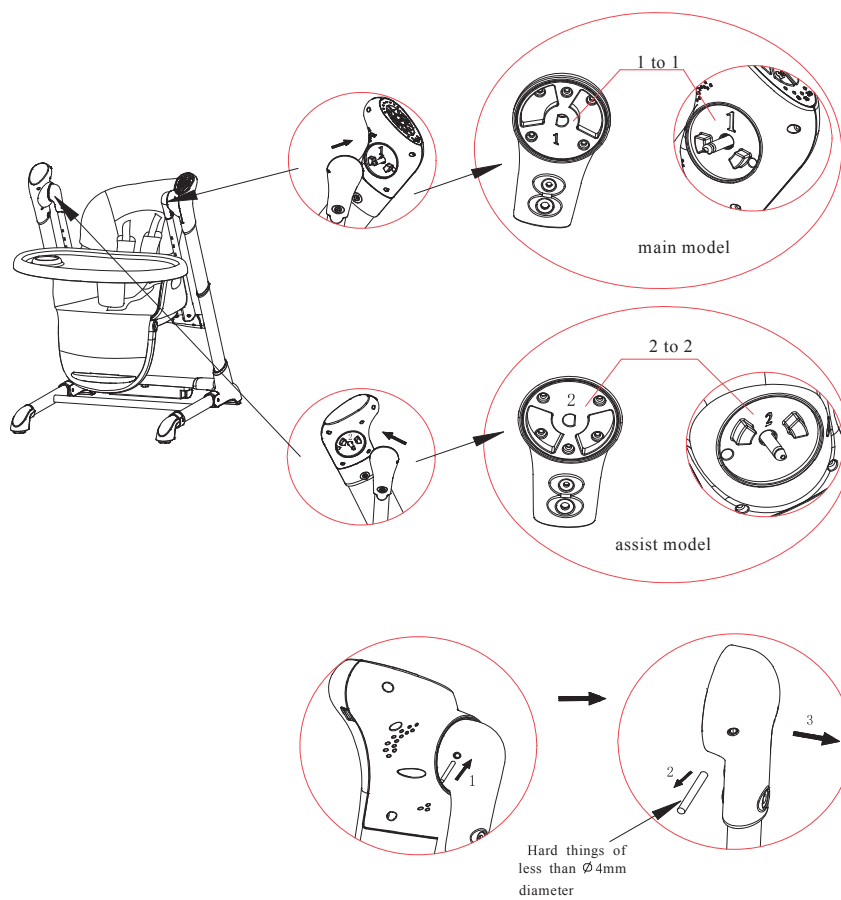
3、



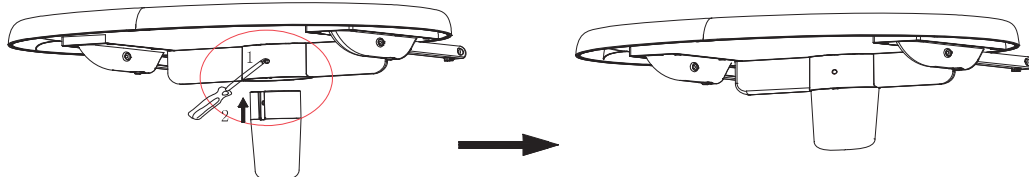
4、



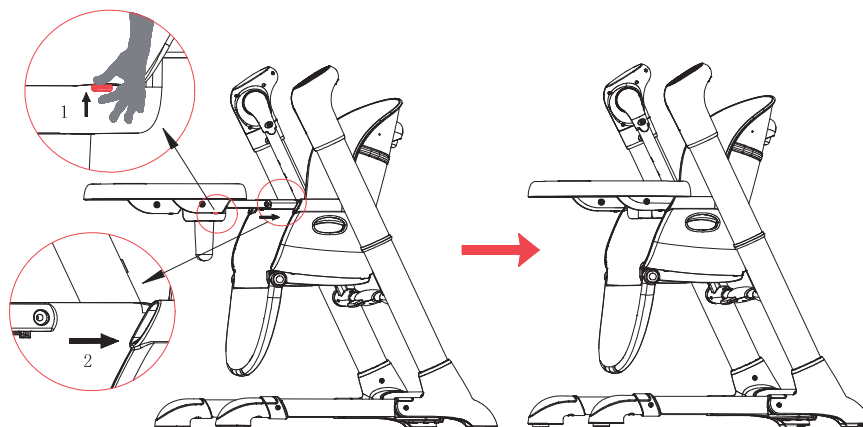
5、



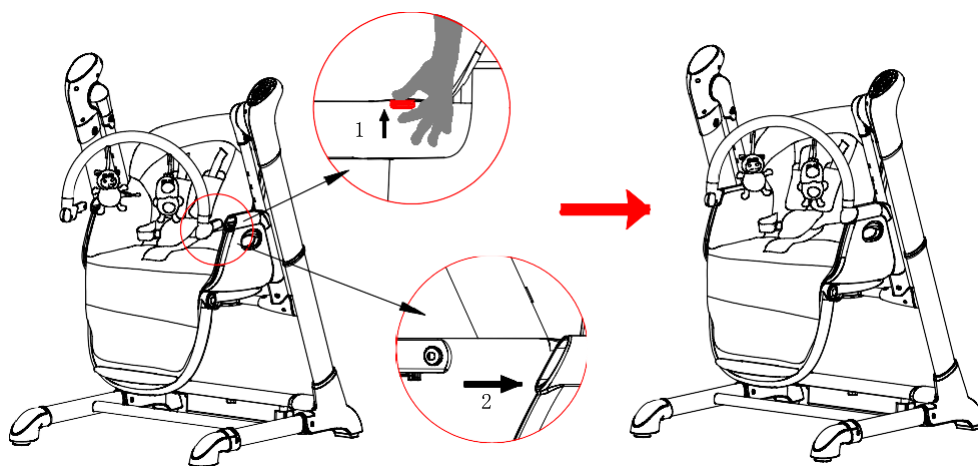
6.



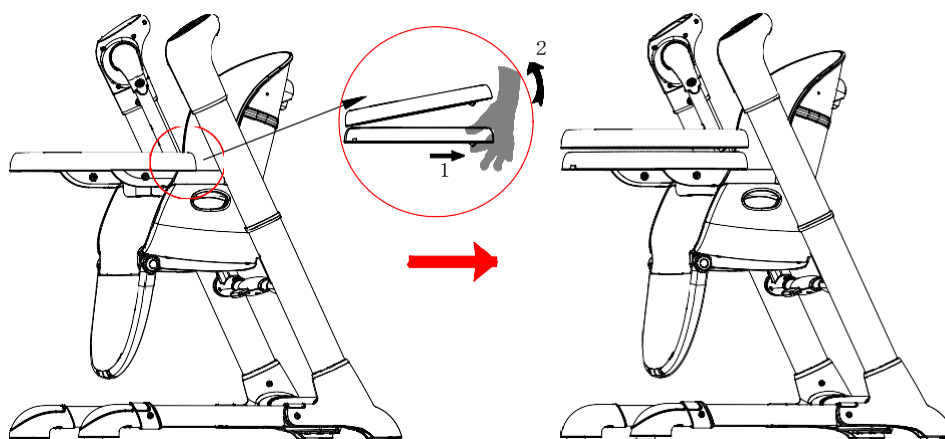
7. High chair with dinner tray



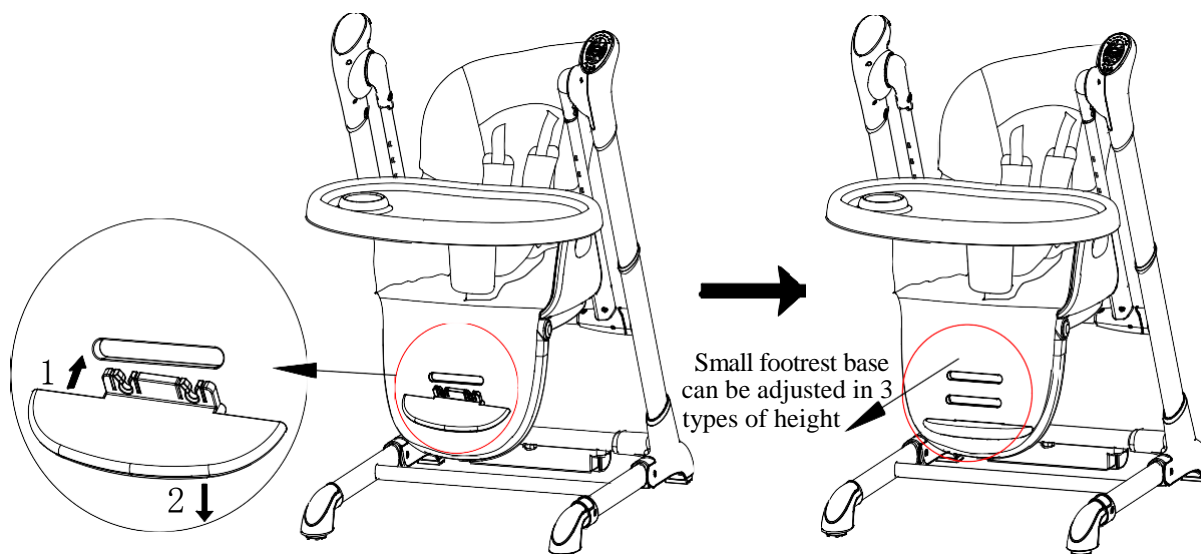
8. Swing with toy arch



9.



10.



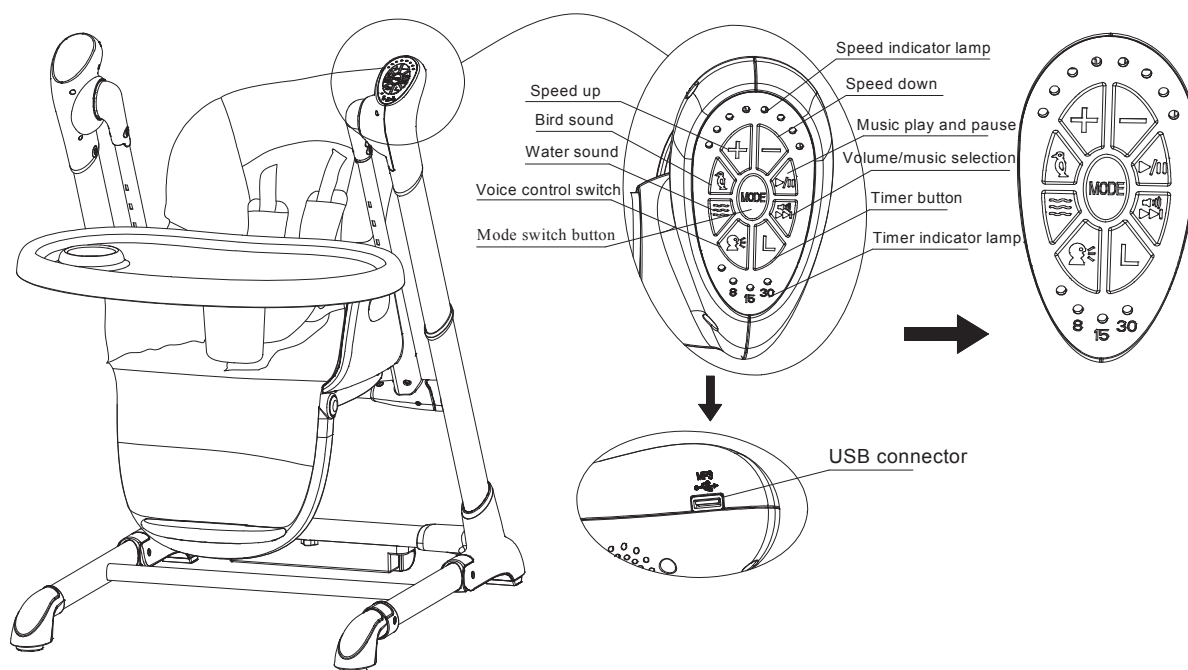
III. Operating instructions

control panel function instruction:

- 1) There are 8 types of swing speed(8 indicator lamps) on speed adjust button. Press “+” for speed up, “-” for speed down. (as below picture shows)
- 2) There are three types of time setting. Press the button once, light will be on for 8 minutes. Press it second time, the light will be on for 15 minutes. Press it third time, the light will be on for 30 minutes. When setting time is reached, all functions will stop. If time setting function is not used, all using function will start working untill power is off.
- 3) USB connector. It can connect U-disk and play music in U-disk according to function fourth and fifth.
- 4) Play/pause button. Press the button once to start playing music. Press it second time to stop playing music. The button has the same function under U-disk and APPmode.
- 5) Volume/next song button. After pressing music play button, press this button to play next song(the swing has 12 8 chord songs). Press “ volume/next song” button for a while to adjust volume. After concerning volume, release your hand. Use the same way to adjust volume under U-disk and APPmode.
- 6) Bird and water sound button. Press “bird sound” button for bird sound, press it again to stop. Press “water sound” button for water sound, press it again to stop.(Notice that when playing bird and water sound, pressing the “play/pause” button can also stop the sound.
- 7) Voice control switch button. When pressing “voice control switch” button, indicator light will be on. Press any button to quit voice control mode. if voice control receiver receives continual two or more than two sound, the machine will start working. The reclinde cradle will swing in lowest speed and play music of the swing in middle volume
- 8) Mode switch button. Press the button to switch mode between swing and U-disk.

Mode switch instructions:

- 1) When smartphone and U-disk is not connected, only music of swing is available. When you press the mode switch button, the music will be stoped for a second but will be back to swing mode automatically and music will be continually played.
- 2) When U-disk is inserted and smartphone is disconnected, it can only be switched under U-disk and swing mode.
- 3) When smartphone is connected and U-disk has not been inserted, it can only be switched under smartphone and swing mode.
- 4) When both smartphone and U-disk are connected, music can be changed under any mode.

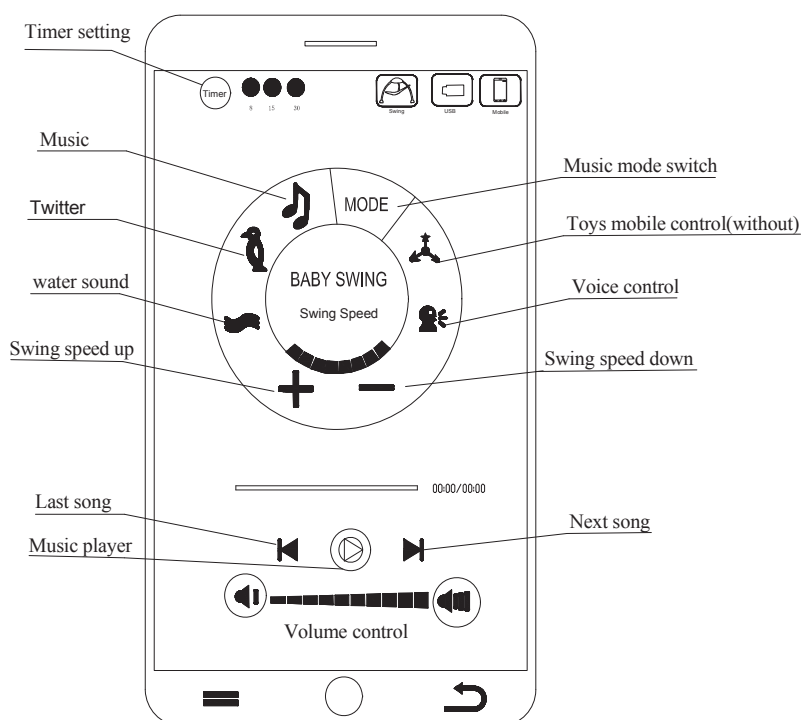


4. APP intelligent mutual connection mode

1. APP mode activation mode instructions(only available in bluetooth APP)

- 1). Scan QR code on instruction or carton. Download APP and install in on you android smart phone.
- 2). Wtich power of electric swing.
- 3). Touch “ swing” incon on your smart phone. Touch “ yes” or “ allow” to enter bluetooth pairing and setting page. Touch any function button on APP, APP connection page will appear. Search or scan “ SWING-018”. Choose and touch “ SWING-018” to active APP.

2. APP function introduction

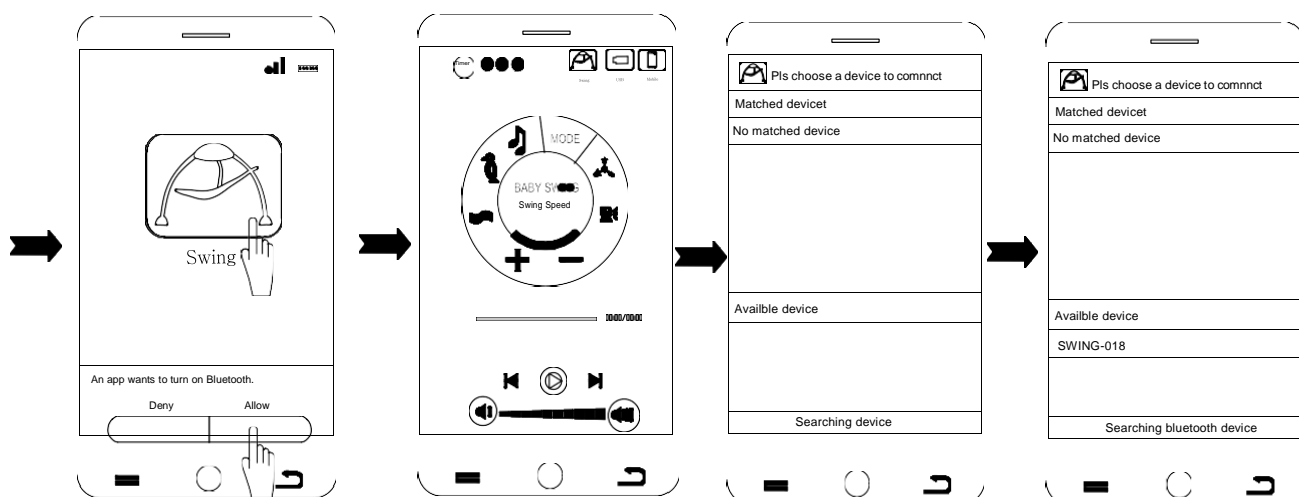


- 1) . Last song/next song button(). Touch last song button on the screen of your smart phone to play last song of your phone. Touch next song button to play next song of your phone.
- 2). Play/ pause button(). Touch “play/pause button” on your mobile phone screen to play next song, press it again to stop playing.
- 3). Voice control button. Touch touch the voice control button to start voice control mode. If voice control receiver receives continual two or more than two sound, the machine will start working. The reclinde cradle will swing in lowest speed and play music of the swing in the middle volume.
- 4) Speed adjustment button(), touch “+” and “-” to adjust swing speed.
- 5) Modeswitch button. Press the button to switch mode between high chair, U-disk and mobile phone.

Mode switch instructions:

- a When smartphone and U-disk is not connected, only music of high chair is available. When you press the mode switch button, music will be stoped for a second but will de back to high chair mode automatically and music will be continually played.
 - b When U-disk is inserted and smartphone is disconnected, it can only be switched under U-disk and high chair mode.
 - c When smartphone is connected and U-disk has not been inserted, it can only be switched under smartphone and swing mode.
 - d When both smartphone and U-disk are connected, music can be changed between smart phone, U-disk and high chair..
- 6) Timer button: 3 types of timer election. Press the button once, the indicator light will be on for 8 minutes. Press it second time, indicator light will be on for 15 minutes. Press it third, indicator light will be on for 30 minutes. Once the setting time is reached, all funcation will be stopped and the machine will enter power saving and stanby mode. If the timer function is not used, all started function will be working untill power is off.
- 7) Music/bird sound/water sound button.(). Touch the three button, you can switch between music, bird sound and water sound mode. Touch it once to start or switch to relevant music. Touch it second time to stop playing music.
- 8). Voice control button. () Touch these two button to adjust volume. It can also be adjusted by sliding between “ ” and “ ” .(notice that when adjusting volume by sliding, please slide it slowly.)

(三) APP mode activation instruction.

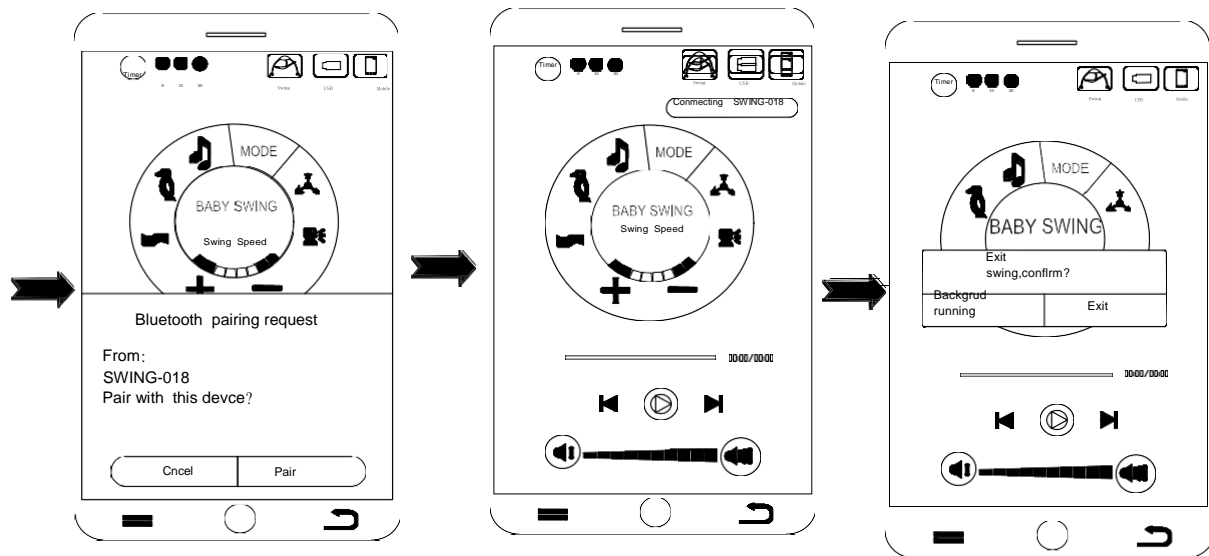


1. Click “swing” APP icon on your mobile phone screen

2. Click “permit” to enter next step.

3. Click any button on screen to enter next step.

4. Click “research device” button to find SWING-018, then touch “SWING-18” to activate it.




5. touch “pair” when “pairing request” appear to enter next step.(some mobile phone does not have this step”

6. if the “SWING-018 connected” is shown at the top right corner, it means that APP has been activated. If “no device connected” is shown at the top right corner, it means that APP has not been activated. Repeat above 3,4,5 step

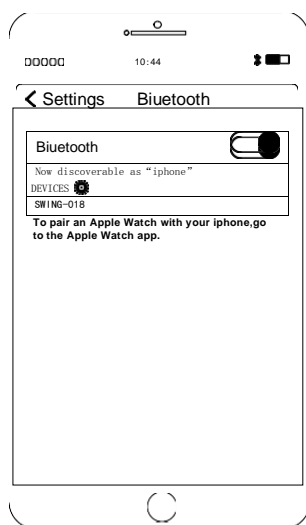
7. After clicking return icon , screen will popup a column as picture. Click “background running” to exit APP main page. you can use your phone as normal If “exit” button is clicked, you will exit APP, and APP functions stop working.

APP activation probable problems and solutions:

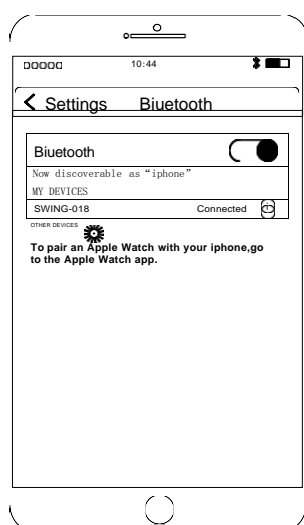
No.	Problems	Solutions
1	Can't play music	Restart APP. Activate APP as activation step to connect SWING-018
2	Can't play music in mobile phone after APP activating	Open APP after loding music in mobile phonec
3	Can't use after opening APP	Click any icon on APP then click “SWING-018” to confirm APP activated(follow step1 to step 6 to activate it))
4	No sound or small sound when using APP to play music	Turn up the volume of mobile music or long press the volume button on swing ()
5	Slow response when pressing mode switch button	Because configuration of mobile phone is different, it is a normal phenomenon for some moile phone to response slowly.
6	Fail to activate APP	Cut off power of high chair, restart APP and activate it as activation step.

(五) Iphone APP mode activation instruction.

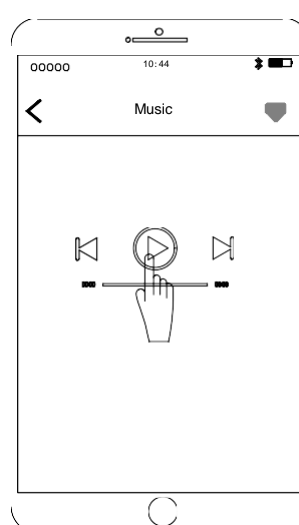
Bluetooth audio player instructions.



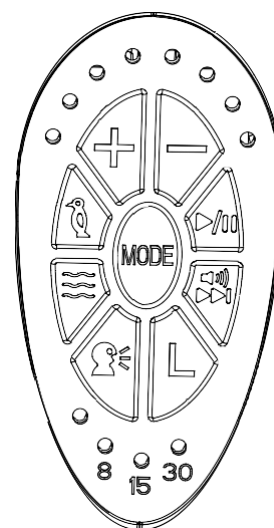
1. open bluetooth setting page, turn on bluetooth switch. Click research device to enter next page



2. Click “SWING-018” pair and connect with it. Return back to the main page of phone after making sure it is connected.




3. enter into the music playing page of your phone, click the music you like for playing



4. Press “MODE” button to switch mode on control panel of high chair to start playing music

1. Bluetooth connection attentions for iphone.

No.	Problem	Solution
1	Can't play music	Check if Bluetooth is already connected. if not repeat step first to fourth, then press swing mode button on control panel
2	Low sound when playing music	Turn up volume of mobile phone or long press the swing volume button ()

7. Attentions for APP function!:

WARNING!

Notice: Iphone can't install this APP, but the Bluetooth music player can be used

1、 APP download attentions:

1) Make sure your phone network have connected 2)

Download by national common browser

3) The camera of the phone can't be downloaded by scan

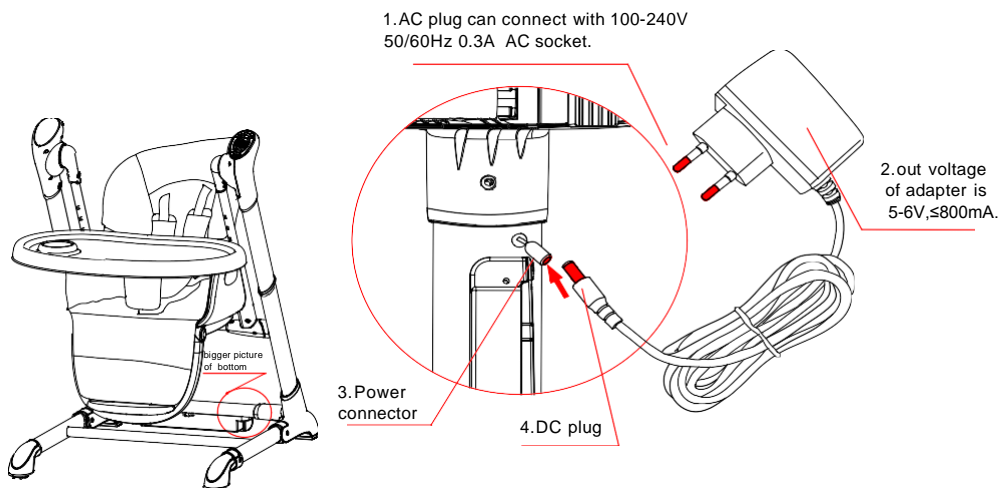
4) Download and install your phone

2、 APP mode activation attentions:

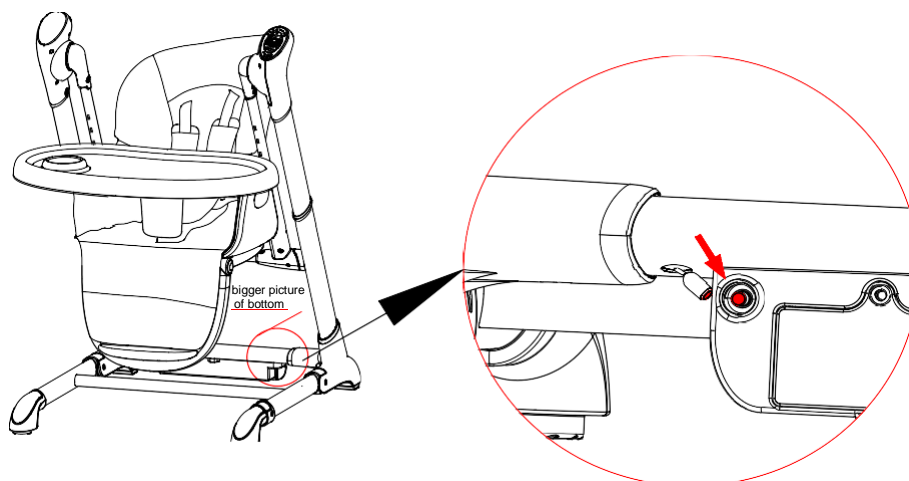
- 1) This APP is only suitable for android smartphone.
- 2) Keep the distance between high chair and your phone within 5 meters when using bluetooth, otherwise it may effect your normal use.
- 3) When playing music of phone, make sure your phone has downloaded music already.
- 4) Adjust volume of bluetooth to the level that is suitable for baby after bluetooth is connected.
- 5) If call is connected to your phone when in normal use of bluetooth function, volume is found to be low or silent. Please check whether volume of bluetooth come back to lowerst extent or bluethooth is disconnected. It bluetooth is disconnected, activate APP as APP mode activation instructions.
- 6) When using mode tetection, please make sure surrounding environment is quite for avoiding false start of highchair because of noise of surrounding environment(you are recommanded to use this function during sleeping)
- 7) After bluetooth is connected, bluetooth connection breaks during using or power of highchair is cut off. Some smartphone will automatically connect with highchair after opening bluethooth due to the difference model of manufacturer of mobile phone, but some mobile phones need to reactivate for connection.(detailed activation and connection method please find APPactivation instructions)

3 .Adapter: if this accessory is available, please operate it as following ways.

- 1) As below picture shows, insert DC plug of adapter to DC receiver of main model. Insert the AC plug into 100-240V 50/60Hz 0.3A AC socket.

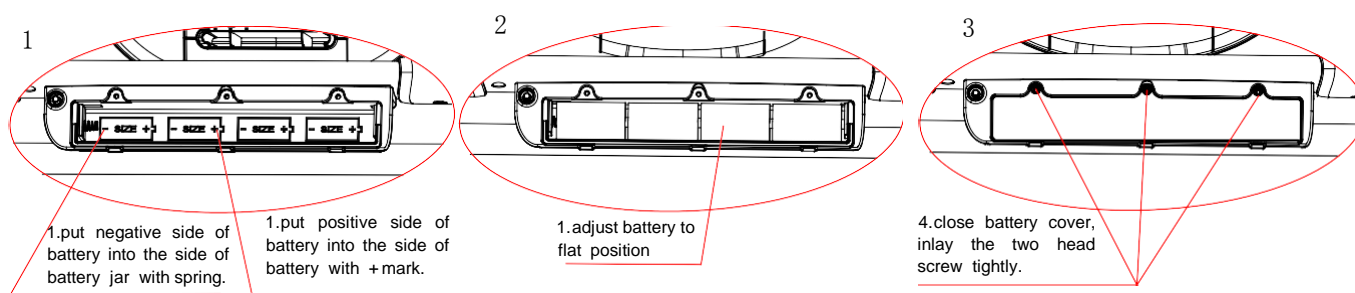


- 2) As following pictures, insert DC plug into battery box receiver once using battery



3) This product can be powered by 4 pcs AA size(1.5V) batteries(not included) or AC adapter which required Voltage:5-6V output and 350-600mA electric current.

a) Install batteries as below pictures show. Use a screwdriver to take screw out of the battery cover, and take the battery cover out. Put batteries into the battery jar according to the correct polarity, then put the battery cover back and fasten it. Use the same way to take out battery.



WARNING:


- 1) Non-rechargeable batteries are not to be recharged;
- 2) Rechargeable battery can only be charged under adult supervision;
- 3) Rechargeable battery should be taken out of the toys before charging;
- 4) Different types of batteries or old and new batteries cannot be mixed;
- 5) The batteries should be placed in the correct polarity;
- 6) Exhausted batteries are to be removed from the infant swing;
- 7) Power supply terminal must not short-circuit;

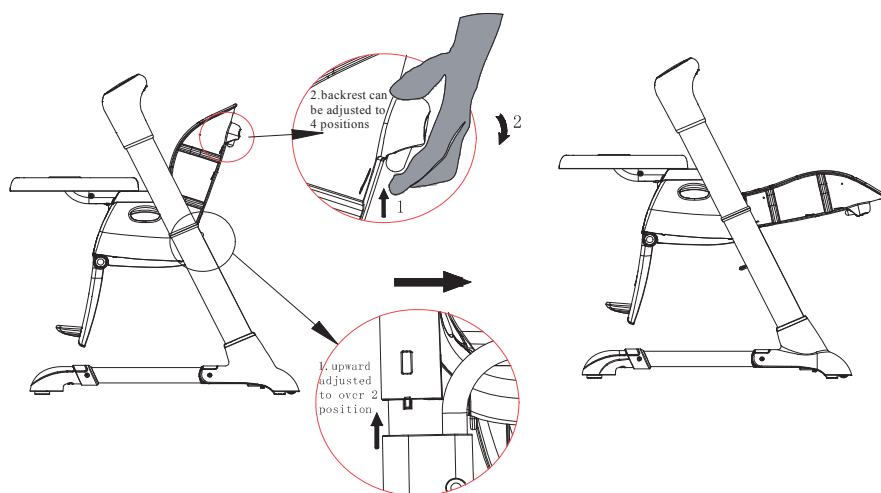
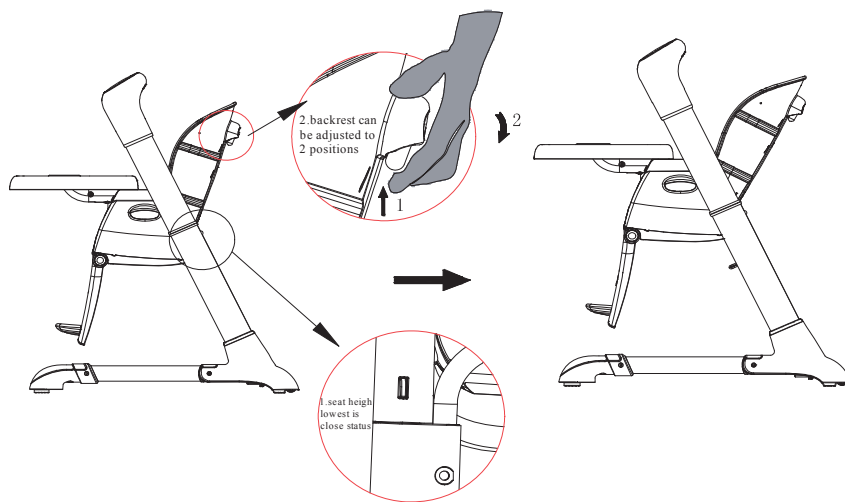
8)The infant swing shall only be used with the recommended transformer. Input voltage of adapter should be 100-240V~50/60Hz 0.3A MAX, Output voltage: 5.8-6V...800mA-1A.

9)When using the adapter, do not let children near the adapter.

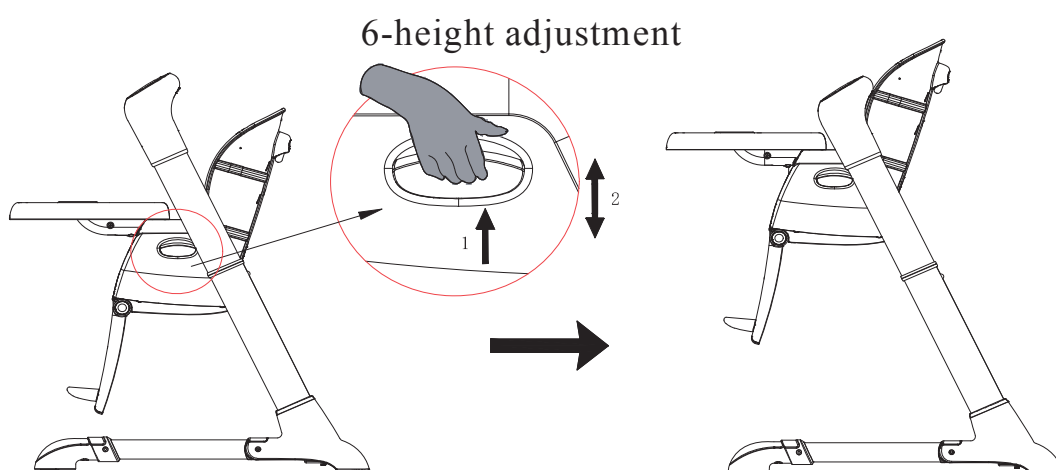
10) Transformers used with the infant swing are to be regularly examined for damage to the cord, plug, enclosure and other parts, and in the event of such damage, they shall not be used;

5. In high chair status,backrest can be adjusted to 4 positions.(note:when the seat height is the lowest ,backrest can only be adjusted two positions of sitting and half lying,others can be adjusted 4 positions to lying.

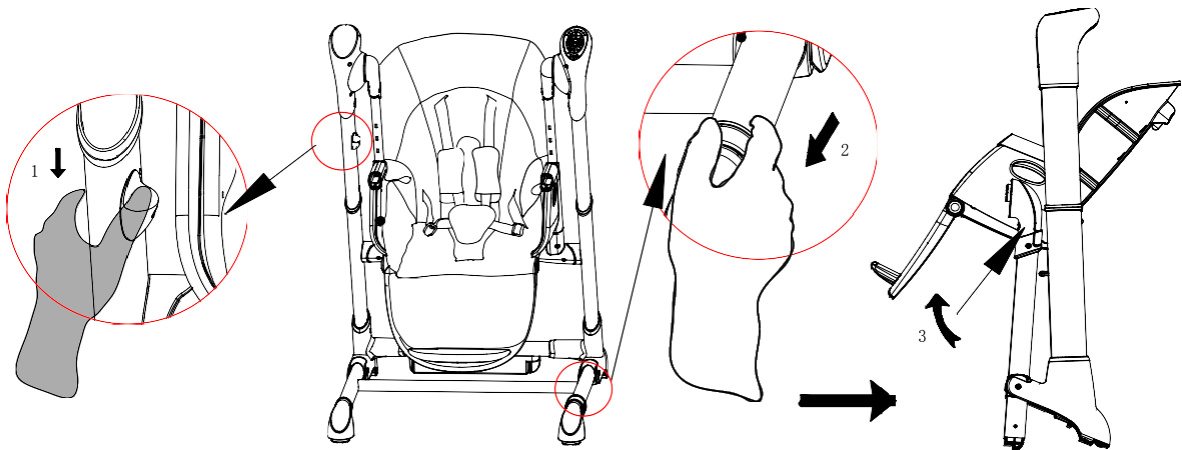
 **WARNING:The child should be secured in the high chair at all times by the restraining system, either in the reclining or upright position. The tray is not designed to hold the child in the chair. It is recommended that the high chair be used in the upright position only by children capable of sitting upright unassisted.**



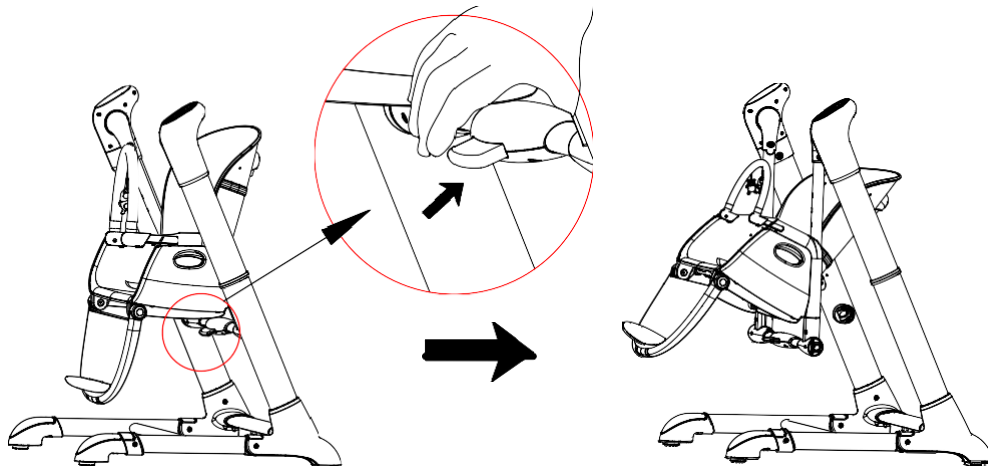
6 . As a high chair, there are six adjustments once the seat in lowest position



7.

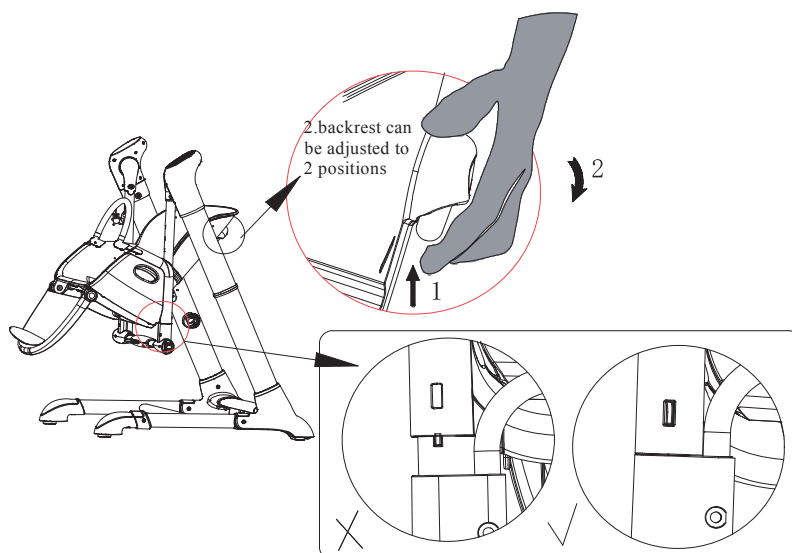


8. When the seat is in the lowest position, it can be converted into swing status by one hand easily. The seat can't be adjusted up in this status.

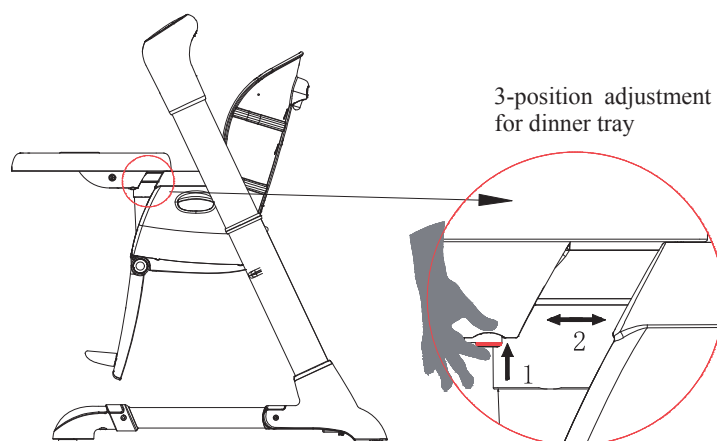


Warning! The seat height can't be adjusted up and down once it is in swing status.

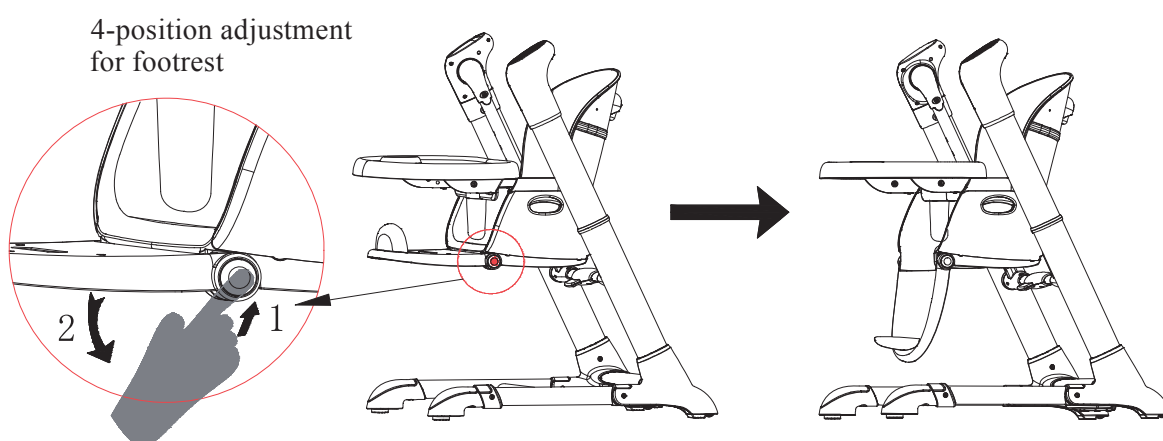
9. In swing status, backrest can be adjusted to 2 positions



10.

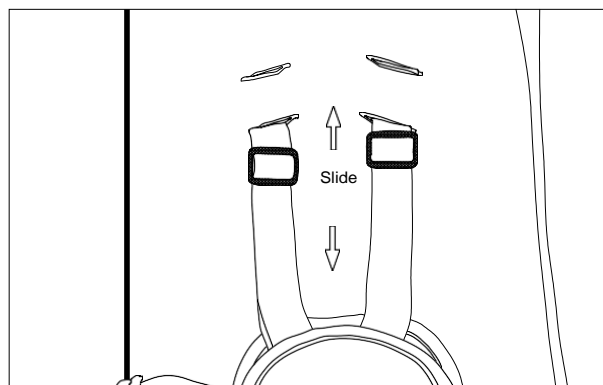
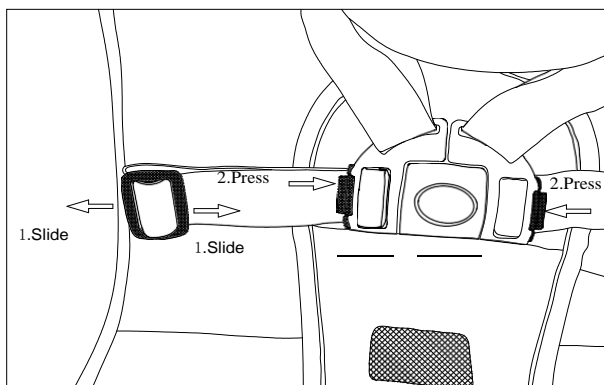


11.

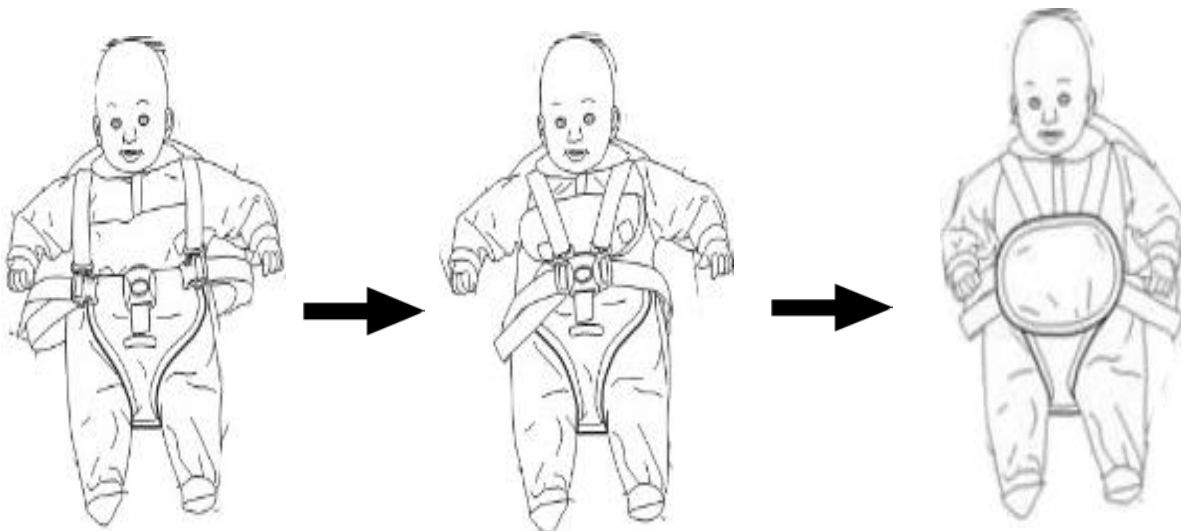


12.

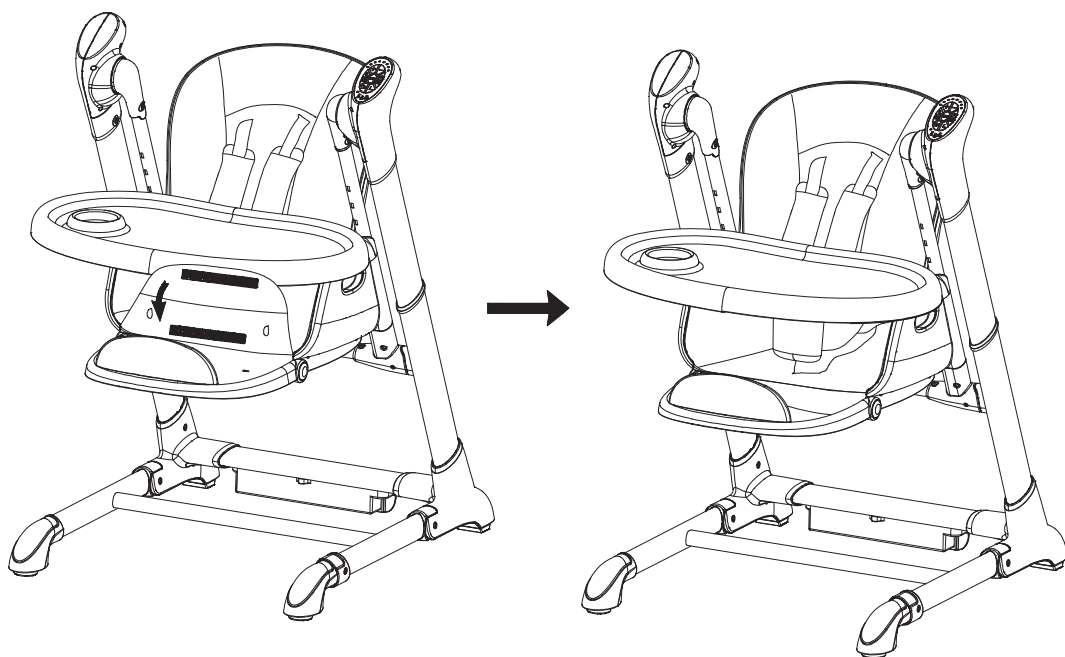
1) 、



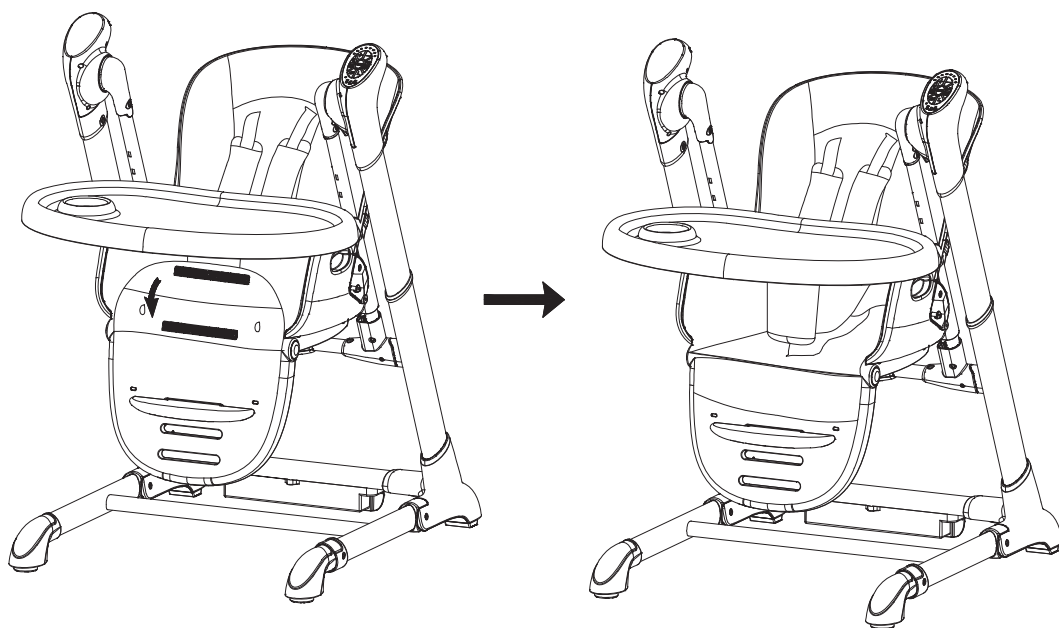
2) 、



13 、 when in the highest location, released the elastic hook from the footrest, and then stuck the cloth via Velcro. Except this location,the elastic hook shall be fixed on the hook at all times



(2) .



WARNING!

When folding the chair or adjusting the chair function, you must let the baby leave the chair and prohibit swing.

For swing:

- 1、 Never leave the child unattended.
- 2、 Do not use this product once your child can sit up unaided or weighs more than 9 kg.
- 3、 This product is not intended for prolonged periods of sleeping.
- 4、 Never use this product on an elevated surface (e.g. a table).
- 5、 Always use the restraint system.
- 6、 To avoid injury ensure that children are kept away when unfolding and folding this product.
- 7、 Do not let children play with this product.
- 8、 Do not move or lift this product with the baby inside it.
- 9、 This product does not replace a cot or a bed. Should your child need to sleep, then it should be placed in a suitable cot or bed.
- 10、 Do not use the product if any components are broken or missing.
- 11、 Do not use accessories or replacement parts other than those approved by the manufacturer.
- 12、 Remove batteries when for storage.
- 13、 Store away from children.
- 14、 Do not store in moist place.
- 15、 Keep away from fire.

For high chair:

- 1、 Always use the restraint system.
- 2、 Falling hazard: Prevent your child from climbing on the product.
- 3、 Never leave the child unattended.
- 4、 Make sure that any harness is correctly fitted .
- 5、 Be aware of risk of open fires and other sources of strong heat in the vicinity of the product.
- 6、 Do not use the high chair unless all components are correctly fitted and adjusted.
- 7、 Be aware of the risk of tilting when your child can push its feet against a table or any other structure.
- 8、 Do not to use the high chair until the child can sit up unaided.
- 9、 Do not to use the high chair if any part is broken, torn or missing.
- 10、 keep children away when unfolding and folding the product to avoid injury.
- 11、 A statement that the product is intended for children able to sit up unaided and up to 3 years or a maximum weight of 15 kg.

V. Care and clean

1. seat cover: filling item is hard resin cotton. Seat cover can be taken out. Assemble it in high chair; use clean cold water to clean it.
2. seat cover can be disassembled, which is convenient for cleaning.

WARNING! Never wash machine, bleach, dehydrate the products!.

3. Basic maintenance:

Number	Probable problems	solutions
1	Suddenly stop when swinging and playing music	Batteries are not be assembled correctly and electricity is not enough
2	No function works after starting	Check whether polarity of batteries are in correct position
		Check whether batteries is put in high chair
3	Alarm is head when pressing button	Electrisity of batteries is not enough, change batteries.

Zhongshan City Togyibaby Co., Ltd

Tel: 86-760-22833719

Fax: 86-760-22185706

Adress: No.5, Yucheng Road 3, Taifeng Induatrial Zone, Xiaolan Town, Zhongshan City, Guangdong Province.

Wetside: [www. Togyibaby.com](http://www.Togyibaby.com)

VI. FCC Statement

This equipment has been tested and found to comply with the limits for a Class B digital device, pursuant to part 15 of the FCC Rules. These limits are designed to provide reasonable protection against harmful interference in a residential installation. This equipment generates, uses and can radiate radio frequency energy and, if not installed and used in accordance with the instructions, may cause harmful interference to radio communications. However, there is no guarantee that interference will not occur in a particular installation. If this equipment does cause harmful interference to radio or television reception, which can be determined by turning the equipment off and on, the user is encouraged to try to correct the interference by one or more of the following measures:

- Reorient or relocate the receiving antenna.
- Increase the separation between the equipment and receiver.
- Connect the equipment into an outlet on a circuit different from that to which the receiver is connected.
- Consult the dealer or an experienced radio/TV technician for help.

Caution: Any changes or modifications to this device not explicitly approved by manufacturer could void your authority to operate this equipment.

This device complies with part 15 of the FCC Rules. Operation is subject to the following two conditions: (1) This device may not cause harmful interference, and (2) this device must accept any interference received, including interference that may cause undesired operation.

RF Exposure Information

The device has been evaluated to meet general RF exposure requirement. The device can be used in portable exposure condition without restriction.