

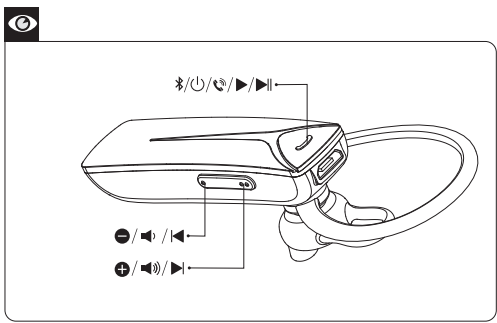
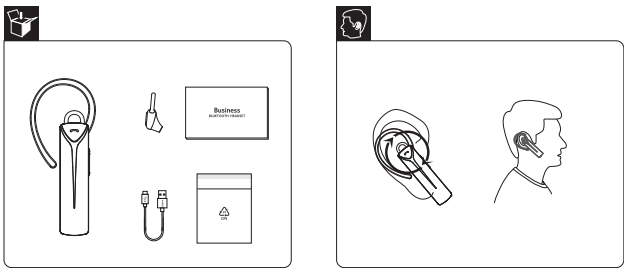


SoundBuds Mono BT

A3701 FCC ID: 2AOKB-A3701

User Manual

Product Number A3701  
SoundBuds Mono BT



**Powering On/Off Headset**

Power on	Long press the power key for 3s to power on	The blue indicator is on for 1s.
Power off	Long press the power key for 3s to power off.	The red indicator is on for 1s.

**Charging SoundBuds Mono BT**

Fully charge the SoundBuds Mono at least once every 45 days to ensure battery service life.

Red LED indicator blinks	Low battery
Red LED indicator is steady on	Charging
Blue LED indicator is steady on	Fully charged

**Pairing with Your Device**

When the headset is powered off, long press the power key for more than 4s to disable the current connection and enter the pairing mode automatically.

Blue LED indicator blinks quickly

Pairing mode enabled

Blue LED indicator is steady on for 1.5s

Successfully paired

**Operation**

Press once	Play/Pause
Press volume up key for 1s	Next song
Press volume down key for 1s	Previous song
Press once	Volume up/down
Press MFB key for 1s	Press MFB key for 1s: Activated

Answer/Hang up a call

Press MFB key once or keep the current call and answer the incoming call

Reject a call

Press MFB key for 1s

Press MFB key for 1s

Blue LED indicator is steady on

In a call

Blue LED indicator blinks

Incoming call

**Parameters**

Specifications are subject to change without notice.

Input:	5V $\approx$ 500mA	Impedance:	16 $\Omega$
Charging time:	About 2h	Frequency response:	20 Hz - 20 KHz
Music play time (Varies depending on volume and content):	About 15h	Bluetooth version:	V4.1
Weight:	About 11g	Range:	10m/33ft

For FAQs and more information, please visit:



anker.com/support

@Anker Official  
@Anker Japan  
@Anker Deutschland

@AnkerOfficial  
@Anker\_JP

@Anker