



## Car Wireless Receiver

Model: BT09S

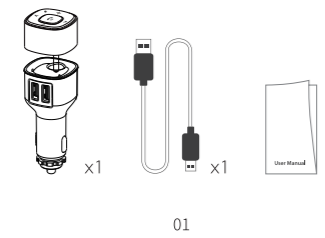


User Manual

### Introduction:

Thanks for choosing our mini Wireless receiver. This device allows you to hear the phone music and call not just from car audio system, but also from home speaker. Once two parts hooked up and plugged into car cigarette lighter, its charging will start automatically. Fully charged 3 hours, it will provides up to 30 hours of music playing time or 15 hours of talking time. To have a better experience, please read this instruction carefully.

### Packing Contents:

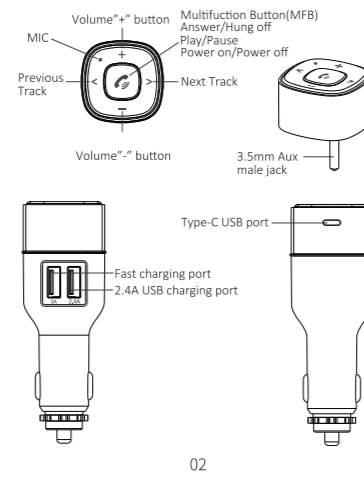


x1

x1

x1

### Appearance:



Type-C USB port

Fast charging port

2.4A USB charging port

3.5mm Aux male jack

Volume "+/-" button

MIC

Previous Track

Next Track

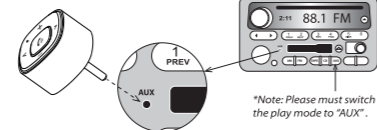
Volume "+/-" button

Multifunction Button(MFB)  
Answer/Hung off  
Play/Pause  
Power on/Power off

### Operation Instructions

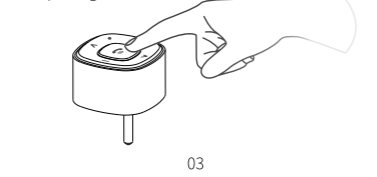
#### Using the music playing function:

1. Plug the Mini Wireless receiver 3.5mm male jack into auxiliary port of your vehicle's audio system or home speaker.

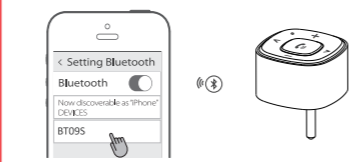


\*Note: Please must switch the play mode to "AUX".

2. Long press MFB for 3 seconds, the LED light starts to flash and prompts "Power on" to enter the pairing mode.



3. Turn on your BT enabled devices and search new device named "BT09S", then pair with this unit.



4. Turn on your music then you can enjoy the crystal audio sounds.

5. Press MFB once to Play/Pause if you need it.

#### Using the hands-free function:

1. Press MFB once to Answer/Hang off the phone call when there is incoming call.
2. Press MFB and hold 2 seconds to reject the phone call.
3. Press MFB twice to redial the last phone call.
4. Press MFB and hold 2 seconds during conversation so as to hear the call with the BT09S or the Phone.

### Voice assistant

1. Long press MFB 2S to wake up Siri/Google Assistant with 2 beeps
2. After using the voice assistant, click or wait for 3S to exit.

### Features

1. Mini Wireless Receiver with music streaming and hands-free function.
2. With built-in Microphone, echo and noise canceling technology supplies high quality call communication.
3. Not just let you enjoy the crystal sounds but also long wireless working distance and low power consumption.
4. Insert the 3.5mm audio head into the USB adapter to charge or use the charging cable to charge through the Type-C interface.
5. Built-in 300mAh battery provides up to 30 hour working time.
6. With 5.4A 30W dual USB car charger to charge others device.

7. Compatible with most wireless enabled devices like smart phones, tablets or MP3.
8. Adjust the volume +/-, switch the previous/next music.
9. With a key to clear the wireless pairing list function.
10. Protection for over circuit/voltage, over heat, short circuit.

### Quick Guide:

Power on	Press MFB and hold for 3 seconds until flashing and prompting you with "Power on"
Power off	Press MFB and hold for 3 seconds until prompting you with "Power off"
Play/Pause music	Press MFB once during music playing
Answer call	Press MFB once when there is incoming call

End call	Press MFB once during call
Redial call	Press MFB twice while standby
Reject call	Press MFB and hold for 2 seconds when there is incoming call
Adjust the volume	Press and hold "+" button: increase volume Press and hold "-" button: decrease volume
Answer call	Press MFB once when there is incoming call
Choose music	Press "<" button: Play the previous song Press ">" button: Play the next song
Clear Pairing History	Long press ">" button and it will clear up pairing history and enter into pairing mode
Switch phone calls between BT09S and Phone	Press MFB and hold for 2 seconds during conversation

### Specifications:

Wireless Version: V5.1  
 Wireless ID: BT09S  
 Wireless Frequency range: 2.4-2.48GHz  
 Wireless Distance: about 10 Meters (open area)  
 Battery Capacity: 300mAh 3.7V  
 Charging time: about 3 hours  
 Talking time: about 15 hours  
 Music playing time: about 30 hours  
 Standby time: auto power-off 10 minutes after disconnected  
 Size: 34.4\*34.4\*99 mm  
 Audio Jack: 3.5mm aux male jack  
 Product weight: 54.5g  
 Material: aluminum alloy + ABS shell

### Compatibility:

This device can be paired as a hands-free kit with any compatible BT enabled devices. Each time can only connected with one BT device.

### Precautions:

Please read all safety instruction warnings carefully before using this product. Improper use of this product may result in damage to this or attached products. To ensure the products work well, please never use this in the following conditions:

1. Moist or underwater conditions.
2. Conditions near heater or high-temperature service.
3. Conditions with direct and strong sunshine.
4. Conditions with apt falling.
5. Never dismantle the product without due permission, otherwise it may nullify the warranty clause.

### Charging the mini Wireless receiver

1. When the battery power is low, the relative prompt will appear and its status will also display on your phone.
2. It starts the charging when two parts hooked, plug the USB adapter to charging port, and it will

be fully charged within 3 hours.

! Cautious: This device can't work while charging.

### FCC Statement

Changes or modifications not expressly approved by the party responsible for compliance could void the user's authority to operate the equipment.

This equipment has been tested and found to comply with the limits for a Class B digital device, pursuant to Part 15 of the FCC Rules. These limits are designed to provide reasonable protection against harmful interference in a residential installation. This equipment generates uses and can radiate radio frequency energy and, if not installed and used in accordance with the instructions, may cause harmful interference to radio or television reception, which can be determined by turning the equipment off and on. The user is encouraged to try to correct the interference by one or more of the following measures:

- Reorient or relocate the receiving antenna.
- Increase the separation between the equipment and receiver.
- Connect the equipment into an outlet on a circuit different from that to which the receiver is connected.
- Consult the dealer or an experienced radio/TV technician for help.

Changes or modifications not expressly approved by the party responsible for compliance could void the user's authority to operate the equipment.

FCC Radiation Exposure Statement  
 This device complies with FCC RF radiation exposure limits set forth for an uncontrolled environment. This transmitter must not be co-located or operating in conjunction with any other antenna or transmitter.

the equipment off and on, the user is encouraged to try to correct the interference by one or more of the following measures:

- Reorient or relocate the receiving antenna.
- Increase the separation between the equipment and receiver.
- Connect the equipment into an outlet on a circuit different from that to which the receiver is connected.
- Consult the dealer or an experienced radio/TV technician for help

This device complies with part 15 of the FCC rules. Operation is subject to the following two conditions (1) this device may not cause harmful interference, and (2) this device must accept any interference that may cause undesired operation.

FCC statement  
 This device complies with Part 15 of the FCC rules. Operation is subject to the following two conditions: 1) this device may not cause harmful interference, and 2) this device must accept any interference received, including interference that may cause undesired operation.

Note: This equipment has been tested and found to comply with the limits for a Class B digital device, pursuant to part 15 of the FCC Rules. These limits are designed to provide reasonable protection against harmful interference in a residential installation. This equipment generates uses and can radiate radio frequency energy and, if not installed and used in accordance with the instructions, may cause harmful interference to radio communications. However, there is no guarantee that interference will not occur in particular installation. If this equipment does cause harmful interference to radio or television reception, which can be determined by turning the equipment off and on, the user is encouraged to try to correct the interference by one or more of the following measures:

- Reorient or relocate the receiving antenna.
- Increase the separation between the equipment and receiver.
- Connect the equipment into an outlet on a circuit different from that to which the receiver is connected.
- Consult the dealer or an experienced radio/TV technician for help.

Changes or modifications not expressly approved by the party responsible for compliance could void the user's authority to operate the equipment.

FCC Radiation Exposure Statement  
 This device complies with FCC RF radiation exposure limits set forth for an uncontrolled environment. This transmitter must not be co-located or operating in conjunction with any other antenna or transmitter.