



SUBPAC S2
OWNER'S MANUAL

TABLE OF CONTENTS

IMPORTANT SAFEGUARDS	4
PRODUCT FEATURE LIST	7
S2 INSTRUCTIONS	9
Physical design features	9
Using your Subpac® S2	10
Strapping and attachment	11
Power and charging	12
TIPS FOR OPTIMAL USE	12
USING YOUR SUBPAC® S2 IN THE STUDIO	13
SUBPAC® MANUFACTURER'S 1 YEAR WARRANTY	14

TO THE EXTENT PERMITTED BY LAW, THE WARRANTIES AND REMEDIES CONTAINED HEREIN ARE EXCLUSIVE AND IN LIEU OF ALL OTHER WARRANTIES EXPRESS, IMPLIED, OR STATUTORY, INCLUDING ANY LIABILITY ARISING UNDER ANY WARRANTY OF MERCHANTABILITY OR FITNESS FOR A PARTICULAR PURPOSE, STATUTORY OR OTHERWISE. THIS WARRANTY GIVES YOU SPECIFIC LEGAL RIGHTS, WHICH MAY VARY BY YOUR PROVINCE, STATE OR COUNTRY.

IN NO EVENT SHALL SUBPAC® BE LIABLE FOR ANY INCIDENTAL, SPECIAL, INDIRECT, OR CONSEQUENTIAL DAMAGES, WHETHER RESULTING FROM THE USE, MISUSE, OR INABILITY TO USE THIS PRODUCT OR FROM DEFECTS IN THE PRODUCT. SOME STATES DO NOT ALLOW THE EXCLUSION OF INCIDENTAL OR CONSEQUENTIAL DAMAGES, SO THE ABOVE LIMITATIONS MAY NOT APPLY TO YOU.

SubPac® retains the exclusive right to repair or replace (with a new or newly-overhauled replacement product) the device or offer a full refund of the purchase price at its sole discretion. SUCH REMEDY SHALL BE YOUR SOLE AND EXCLUSIVE REMEDY FOR ANY BREACH OF WARRANTY.

To obtain warranty service, please submit a support request at support.thesubpac.com and a SubPac® Support Specialist will assist you.

SubPac® Product Support will provide you with shipping instructions and an RMA tracking number. Securely pack the device with accessories and a copy of the original sales receipt, which is required as the proof of purchase for warranty repairs. Write the tracking number clearly on the outside of the package. Send the device, freight charges prepaid, to SubPac® warranty service station provided by SubPac® Product Support.

ONLINE AUCTION PURCHASES: Products purchased through online auctions (this does not apply to purchases made on thesubpac.com) are not eligible for warranty coverage. Online auction confirmations are not accepted for warranty verification. To obtain warranty service, an original or copy of the sales receipt from the original retailer is required. SubPac® will not replace missing components from any package purchased through an online auction.

FCC NOTICE: This device complies with part 15 of the FCC Rules. Operation is subject to the following two conditions: (1) This device may not cause harmful interference, and (2) this device must accept any interference received, including interference that may cause undesired operation.

This equipment has been tested and found to comply with the limits for a Class B digital device, pursuant to part 15 of the FCC Rules. These limits are designed to provide reasonable protection against harmful interference in a residential installation. This equipment generates, uses and can radiate radio frequency energy and, if not installed and used in accordance with the instructions, may cause harmful interference to radio communications. However, there is no guarantee that interference will not occur in a particular installation. If this equipment does cause harmful interference to radio or television reception, which can be determined by turning the equipment off and on, the user is encouraged to try to correct the interference by one or more of the following measures:

- Reorient or relocate the receiving antenna.
- Increase the separation between the equipment and receiver.
- Connect the equipment into an outlet on a circuit different from that to which the receiver is connected.
- Consult the dealer or an experienced radio/TV technician for help.

Caution: Any changes or modifications not expressly approved by the party responsible for compliance could void the user's authority to operate the equipment.

SUBPAC® MANUFACTURER'S 1 YEAR LIMITED WARRANTY

For consumers who are covered by consumer protection laws or regulations in their country of purchase or, if different, their country of residence. The benefits conferred by the SubPac® One Year Limited Warranty are in addition to all rights and remedies conveyed by such consumer protection laws and regulations, including but not limited to these additional rights.

For further information on rights provided by consumer law for different regions, please visit: <http://thesubpac.com/warranty>

IMPORTANT: BY USING YOUR SUBPAC® PRODUCT, YOU ARE AGREEING TO BE BOUND BY THE TERMS OF THE SUBPAC® ONE YEAR LIMITED WARRANTY ("WARRANTY") AS SET OUT BELOW.

PLEASE DO NOT USE YOUR PRODUCT UNTIL YOU HAVE READ THE TERMS OF THE WARRANTY.

IF YOU DO NOT AGREE TO THE TERMS OF THE WARRANTY, DO NOT USE THE PRODUCT AND RETURN IT WITHIN THE RETURN PERIOD STATED IN THE SUBPAC® RETURN POLICY (FOUND AT <http://thesubpac.com/warranty>) DIRECTLY TO SUBPAC® (USING THE INSTRUCTIONS BELOW) FOR A FULL REFUND.

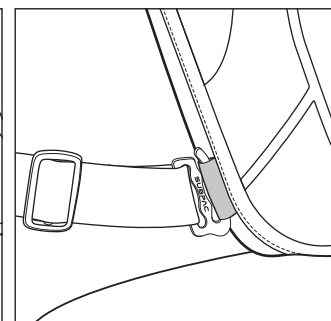
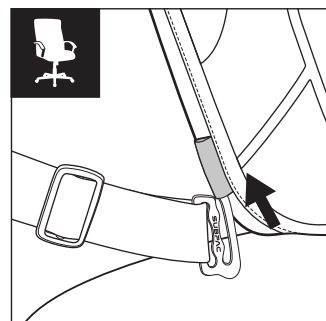
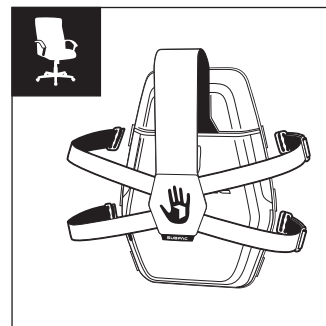
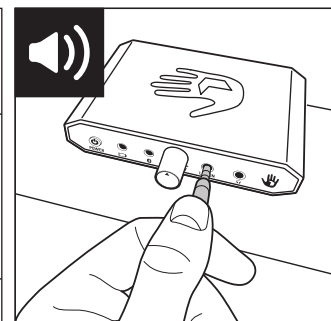
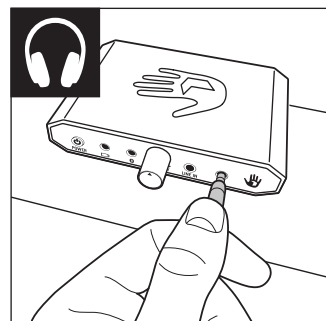
SubPac® tactile sound products are warranted to be free from defects in materials or workmanship for one year from the date of purchase. Within this period, SubPac® will, at its sole option, repair or replace any components that fail, providing the unit has not been compromised. Such repairs or replacement will be made at no charge to the customer for parts or labor, provided that the customer shall be held responsible for any transportation cost.

This warranty does not apply to:

- (i) Cosmetic damage, such as scratches or tears
- (ii) Rips in textile elements or straps
- (iii) Consumable parts, such as batteries, unless product damage has occurred due to a defect in materials or workmanship
- (iv) Damage caused by accident, abuse, misuse, water, flood, fire, or other acts of nature or external causes
- (v) Damage caused by service performed by anyone who is not an authorized service provider of SubPac®
- (vi) Damage to a product that has been modified or altered without the written permission of SubPac®

In addition, SubPac® reserves the right to refuse warranty claims against products or services that are obtained and/or used in contravention of the laws of any country.

Repairs have a 90-day warranty. If the unit sent in is still under its original warranty, then the new warranty is 90 days or to the end of the original one year warranty, depending upon which is longer.





Congratulations on your purchase of the SubPac® S2! Your SubPac® tactile bass unit translates sound frequencies from 5hz to 130hz directly to your body for a rich, dynamic and immersive listening experience. For your safety, please follow the important safeguards, warnings and instructions for use set out below. For more information, visit www.thesubpac.com

FRA DEU SPA ITA → <http://thesubpac.com/manuals>

▲ IMPORTANT SAFEGUARDS

WARNING: TO REDUCE THE RISK OF FIRE OR SHOCK HAZARD, DO NOT EXPOSE THIS PRODUCT TO WATER, RAIN OR MOISTURE.

Do not expose your SubPac® S2 to direct sunlight or extreme temperatures.

Adult supervision is required for setup.

Excessive use of audio equipment at high volumes may lead to hearing loss, please listen responsibly and use common sense.

Children under 13 should not use this product without parental supervision.

DO NOT wash or soak unit with water. If the cover becomes wet please disconnect power immediately and do not use again until it has totally dried.

The cover is NOT designed to be removed. The cover is water-resistant but not waterproof. Do not attempt to remove the electronics or wiring of your unit without consulting SubPac® customer service first. The SubPac® S2 can be cleaned with a damp cloth and a mild detergent.

To avoid injury or death from electrical shock, NEVER open the electrical cabinet or remove the front cover of your SubPac® S2.

Discover new genres of music and rediscover your record collection with SubPac®.

There are many surprises waiting in albums you thought you have fully experienced until you FEEL them!

Reference: if you are a producer of music be sure to feel the bass response of a number of different tracks to create a reference point. Like any new piece of monitoring equipment, you need to understand and calibrate your SubPac® to get the most from the experience.

Using your SubPac® S2 in the Studio

For critical listening applications it is important to calibrate your SubPac® to perform better as a reference subwoofer. Download the guided calibration recording from our website to get started:
<http://thesubpac.com/download/subpac-guided-calibration-file/>

Matching Workflow for the Studio in four easy steps:

- Select a song similar in style/production and preferably in the same key as the track you are mixing/producing.
- Before turning up the intensity of your SubPac®, adjust the volume of the track you are attempting to reference in your headphones, so that the kick drum in the reference song is the same volume as the kick drum in the song you are mixing/producing.
- Now turn up the SubPac® and play the reference song while you increase the intensity knob, until you find a level that suits you.
- Next, use the SubPac® (without adjusting the intensity knob) to compare the reference song to your song/mix and make adjustments accordingly, striving to match the intensity and volume in the sub bass and bass frequencies of your song/mix to the reference song.

Power and Charging

- Your SubPac® S2 can be powered by the included rechargeable battery or, when plugged into a power outlet while charging.
- Press the power button on the control box to turn your unit on. See the table below for power indicator LED states. To charge your SubPac® S2, plug your power adapter into the back of the control box, ensure that the correct regional power cable is attached to the power adapter and plug it into a power outlet.
- **Solid Green** - the S2 is fully charged/charging complete when plugged in
- **Solid White** - the S2 is charging
- **Solid Yellow** - the S2 is running low and should be charged soon
- **Blinking Red** - the S2 needs to be charged immediately OR the unit is being overdriven (see *TIPS FOR OPTIMAL USE*)

Tips for Optimal Use

- As tempting as it may be, we do not recommend cranking the intensity knob – the SubPac® is designed to be used at moderate levels for bass heavy music, and at higher levels for classic acoustic-based music (funk, soul, jazz, classical etc.).
- Use a healthy and reasonable volume signal from your listening device/output source to protect your hearing.
- Ideally your chair/seat should have some padding - this will allow a much more full experience, compared with using a chair with minimal/no padding.
- The SubPac® S2 is designed to be leaned against. The more direct contact it has with your body the better the experience.
- Using the SubPac® S2 you will find that you will not need as much headphone volume in order to feel the bass in your music. We hope this will add years of listening enjoyment to your life. Lower headphone volume equals less hearing loss over time.

WHEN USING ELECTRICAL PRODUCTS, ESPECIALLY WHEN CHILDREN ARE PRESENT, BASIC SAFETY PRECAUTIONS SHOULD ALWAYS BE FOLLOWED:

DANGER — READ ALL INSTRUCTIONS BEFORE USING TO REDUCE THE RISK OF ELECTRICAL SHOCK:

Always unplug the device from the electrical outlet immediately after using and before cleaning.

DO NOT reach for a device that has fallen into water. Unplug it immediately.

WARNING — TO REDUCE THE RISK OF BURNS, ELECTRIC SHOCK, FIRE OR INJURY TO PERSONS:

A device should never be left unattended when plugged in to charge. Unplug from outlet when not in use and before putting on or taking off parts or attachments.

Close supervision is necessary when this device is used by, on or near children, invalids or disabled persons.

Use this appliance only for its intended use as described in this manual. Do not use attachments that are not recommended by StudioFeed USA Ltd; specifically any attachments not provided originally with your SubPac® unit.

NEVER operate your SubPac® S2 if it has a damaged cord or plug, if it is not working correctly, or has been damaged or dropped into water. If this is the case, please return it to the SubPac® Service Center for examination and repair (see attached warranty for details).

Keep power cord away from heated surfaces. NEVER drop or insert any object into any opening anywhere on the unit. DO NOT operate in an area where aerosol (spray) products are being used or where oxygen is being administered.

DO NOT operate under a blanket or pillow. Excessive heating could occur and cause fire, electrocution or injury to persons.

DO NOT carry this device by the power cord or use the power cord as a handle.

NOT recommended for outdoor use.

To disconnect your SubPac®, turn the power setting OFF then remove the plug from the power outlet.

CAUTION – PLEASE READ ALL INSTRUCTIONS CAREFULLY BEFORE OPERATING.

This product is not intended for medical use.

Consult your doctor prior to using this product if:

- You are pregnant
- You have a pacemaker
- You have any health concerns that could be affected by use of the SubPac®.

Not recommended for use by diabetics, please consult a medical professional before use.

Never leave the device unattended, especially if children are present.

Never cover the device when it is in operation.

Extensive use, especially at high intensity setting could lead to the device excessively heating. Should this occur please discontinue use and allow the unit to cool before operating again.

Never use this product directly on swollen or inflamed areas or skin eruptions.

DO NOT use this product while in bed, where there is a possibility of falling asleep with it powered on.

⚠ CAUTION

BEFORE USING YOUR SUBPAC® IN A VEHICLE, PLEASE CONSULT THE OWNER'S MANUAL TO ENSURE THAT YOU CAN PROPERLY ADJUST YOUR VEHICLE'S SEAT AND/OR HEADREST AFTER INSTALLATION OF THE SUBPAC®.

Please find instructions for use, tips to optimize the user experience and warranty information.

**SHARE BASS WITH PEOPLE.
HELP BRING US TOGETHER.**

Using Your SubPac® S2 (continued)

• Listening (continued):

From 70% to 100% we have applied a logarithmic curve which rapidly increases intensity, allowing for an enhanced bass response for those looking for a more bass-heavy listening experience.

For the S2's design we accommodated the requests of some of the world's most respected music producers as well as taking on board feedback from users worldwide who utilised our original model, the SubPac® S1. The 0-70% range and the 70%-100% ranges are useful for both professional use and casual music listening as they provide two different ways of feeling the music you love. Treat them as different modes of appreciating your audio, but also as an A/B tool to reference material you know well.

Strapping and Attachment

- The SubPac® S2's multipoint strapping system is designed to be used on a variety of different chair sizes and styles.
- The main top strap sits atop of your chair to hold your unit in place, while the cross straps lock the S2 in position. The base of the unit should typically sit a few inches above the seat of your chair.
- There are two velcro inserts within the back pocket of the main body of the unit that secure one end of the top chair strap, which secure across the top of your chair for stability.
- The cross straps reach around the side of the chair and hook to three different sets of loops found on both sides of the main body of the unit, securing it in place. These can then be adjusted for optimal fit and position on your chair.
- The strapping for your SubPac® is completely removable, and can detach into two separate pieces to best suit the design of your chair. The strapping system can be stored in the S2's back pocket for neatness.
- The control box can be clipped to the SubPac®, chair or armrest using the provided straps. The wide strap loop is intended to clip the control box around the armrest of your chair. Secure it first and then attach the control box using the clip found on the back of the control box. To change the direction of the clip, unscrew it, turn it 180 degrees and reposition it with the other screw hole. The control box can be clipped to the wide elastic loop or on the back pocket when not in use or during transportation.

Using Your SubPac® S2

Please read and follow these instructions before using your SubPac® S2 for the first time.

• Setup:

Find a comfortable chair with a full back and secure your S2 to it using the multipoint strapping system (see the Strapping and Attachment section below for more detail). Ideally your unit will have full contact with the centre of your back. This is a general starting position to get used to the feeling of tactile sound.

After a few sessions we recommend experimenting with the placement of the S2 on your chair to find the optimal positioning to 'tune' the SubPac® to your body and for your comfort.

Variables that can affect the tactile response of your SubPac® include chair selection, body placement and input level.

• Cables:

Connect your listening device/output source to the line-in port on the control box using the supplied 3.5mm audio cable.

Plug your headphones into the headphone jack on the control box.

• Bluetooth 4.0 with A2DP:

For Bluetooth pairing, unplug the audio cable and hold down the power button for 4 seconds to make your SubPac® S2 visible to devices, the Bluetooth LED will turn solid blue. Search for 'SubPac S2' in your transmitting device's Bluetooth settings and pair with it as per the manufacturer's recommendations. When successfully paired the LED will flash until audio is played, where it will turn solid again. Note that plugging in the line-in cable will automatically turn off Bluetooth and will disrupt streaming.

• Listening:

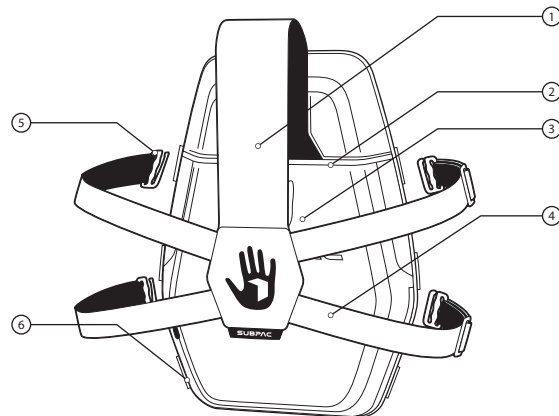
Start by turning the intensity level on the control box of your SubPac® anti-clockwise, all the way down to the minus sign on the left side of the intensity knob.

Set the headphone level from your listening device/output source so that you can hear the music above a normal conversational volume, the music should sound full and detailed in your headphones.

Slowly turn up the SubPac® intensity level (clockwise) and stop when what you hear with your ears via headphones (or monitors) matches in intensity with what you are feeling through your S2 unit and feels/sounds balanced. Once you have discovered this optimal level, leave the intensity knob set where it is and listen to a few tracks from different genres and artists to allow your brain and body to adjust to the feeling of tactile sound.

The intensity curve of the S2 is linear in response from 0 - 70% for maximum accuracy when listening, writing and mixing, making the SubPac® S2 an extremely accurate and effective tool for creating and mixing music to a professional level.

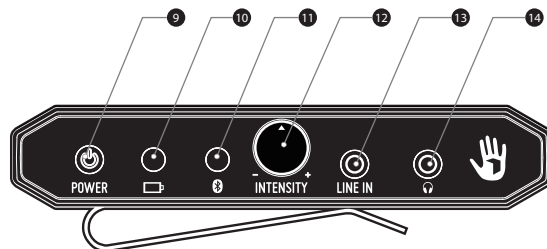
PRODUCT FEATURE LIST



S2 Back view



S2 Front view



Control Box Front view

LIST OF FEATURES

- | | |
|---|-----------------------------------|
| ① Removable Seat Strap | ⑧ Adjustable Armrest Strap |
| ② Slit Pocket
(stores chair straps and control box) | ⑨ Power Button |
| ③ Rechargeable Battery Zippered Pocket | ⑩ Battery Power Indicator |
| ④ Adjustable Elastic Straps | ⑪ Bluetooth Indicator |
| ⑤ Metal Hook
(hooks on webbing loops to adjust fit) | ⑫ Intensity Knob |
| ⑥ Webbing Loop | ⑬ Line In |
| ⑦ Control Box | ⑭ Headphone out |

S2 INSTRUCTIONS

What's in the box:

- SubPac® S2
- Removable multipoint chair strapping system
- Control box with reversible clip
- Optional armrest strap for control box
- Rechargeable battery (found inside main unit)
- Power adapter with four international region adapters
- 3.5mm stereo line-in cable (1.5 meters)
- Owner's manual

Physical Design Features

- The SubPac® S2's ergonomic design is intended to maximise contact with the unit for a more immersive experience while comfortably supporting your spine and lower back.
- The SubPac® S2's multipoint strapping system allows you to find the optimal position for securing it to your chair.
- The reversible clip on the SubPac® S2's control box can be connected to the main body of the unit using the elastic loop on the side or, anywhere along the multipoint strapping system. We have also included a short elastic and velcro strap designed to hold the SubPac® S2's control box in place in a variety of locations along the arm or leg of your chair. To change the direction of the clip, unscrew it, turn it 180 degrees and reposition it with the other screw hole.
- A Kensington lock slot is provided on the backside of the SubPac® S2's control box, providing an anti-theft solution for education, retail and other public use scenarios.