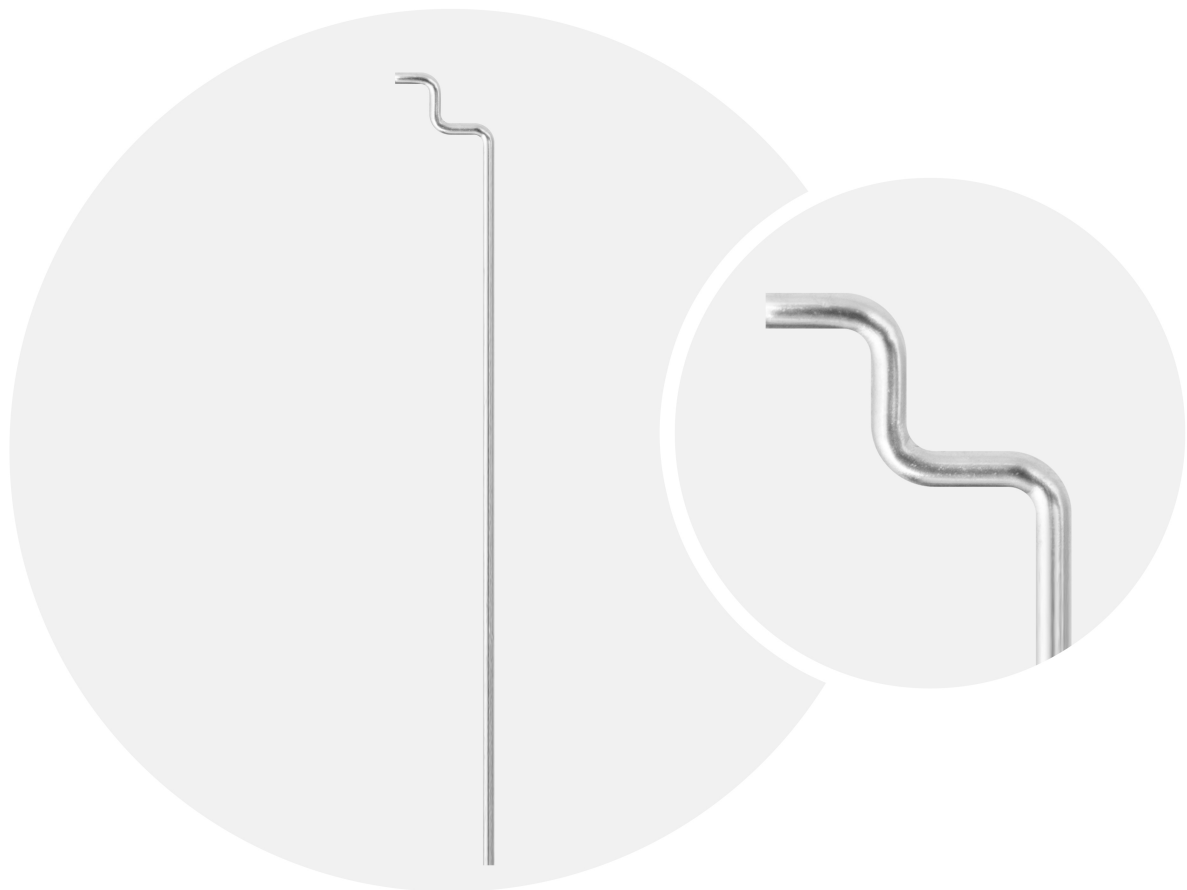


INTERNAL 915 MHZ

SOLDERING, MONOPOLE ANTENNA

   895-935 MHz



PN: M04-0103240R0A
Dimensions: Ø1.2 mm, 72.6 x 7.4 mm





Table of Contents

| | |
|---|---|
| 1 FEATURES & BENEFITS | 1 |
| 2 APPLICATIONS | 1 |
| 3 ORDER INFORMATION | 1 |
| 4 MECHANICAL DIMENSIONS | 2 |
| 5 REFERENCE GUIDE | 3 |
| 6 ELECTRICAL PERFORMANCE | 4 |
| 6.1 S11 (dB) | 4 |
| 6.2 Gain (dBi) and Total Efficiency (%) | 5 |
| 6.3 Radiation Patterns (915 MHz) | 6 |



1 FEATURES & BENEFITS

- Light Weight
- Nickel-Plated
- Easy Installation
- Good compatibility, Sensitive signal reception, Excellent stability
- Reduced Cost and Time-to-Market

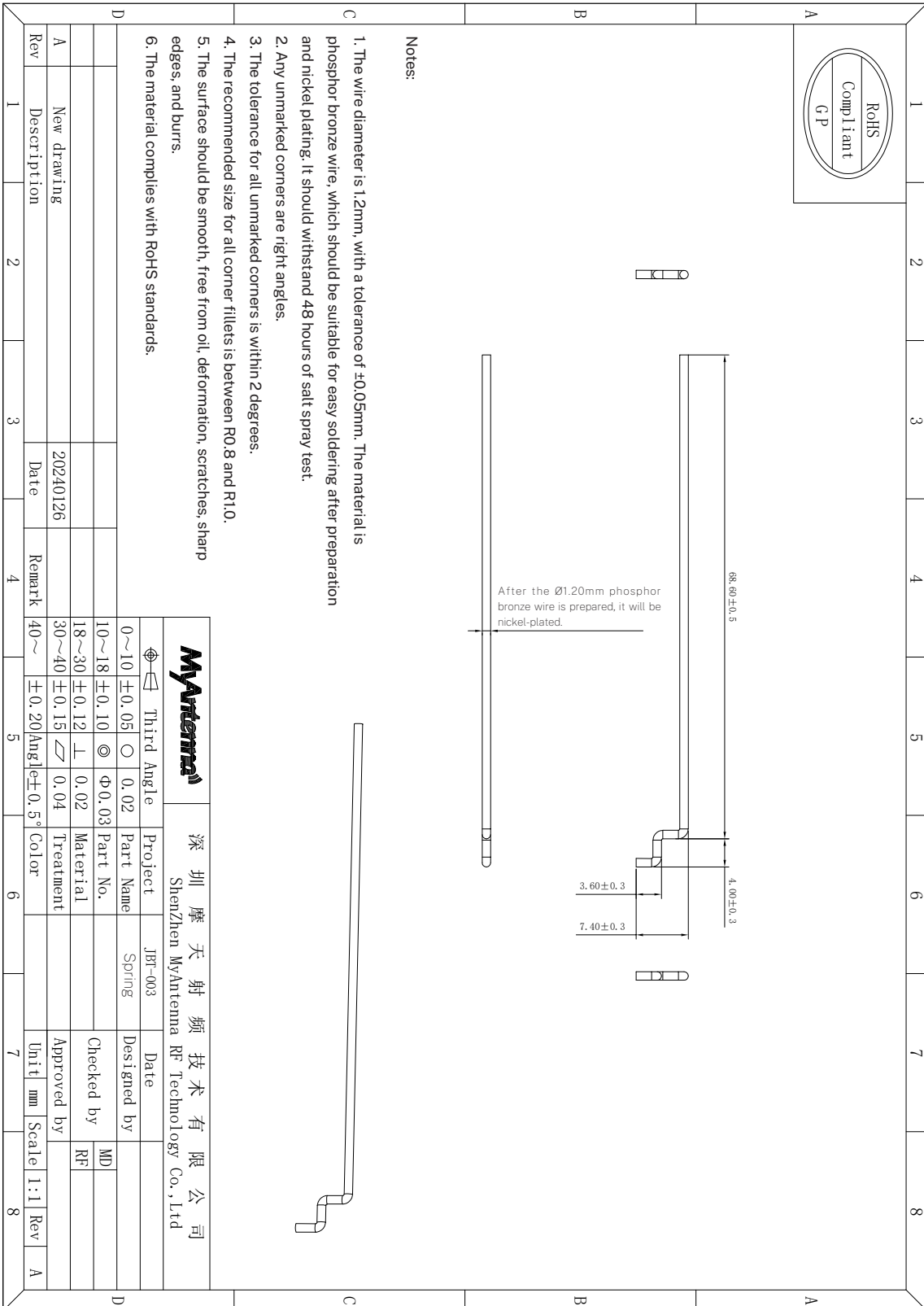
2 APPLICATIONS

- Automated Meter Reading
- Wireless Sensor Networks
- Home and Building Automation
- Wireless Alarm and Security Systems
- Industrial Monitoring and Control
- Wireless M-BUS
- Internet of Things (IoT) Devices
- Smart Agriculture

3 ORDER INFORMATION

| | |
|--------------|--|
| Product Name | Internal 915 MHz Soldering, Monopole Antenna |
| Part Number | M04-0103240R0A |
| Dimensions | Ø1.2mm, 72.6 x 7.4 mm |
| Weight | 0.8g |
| Color | Silvery |

4 MECHANICAL DIMENSIONS



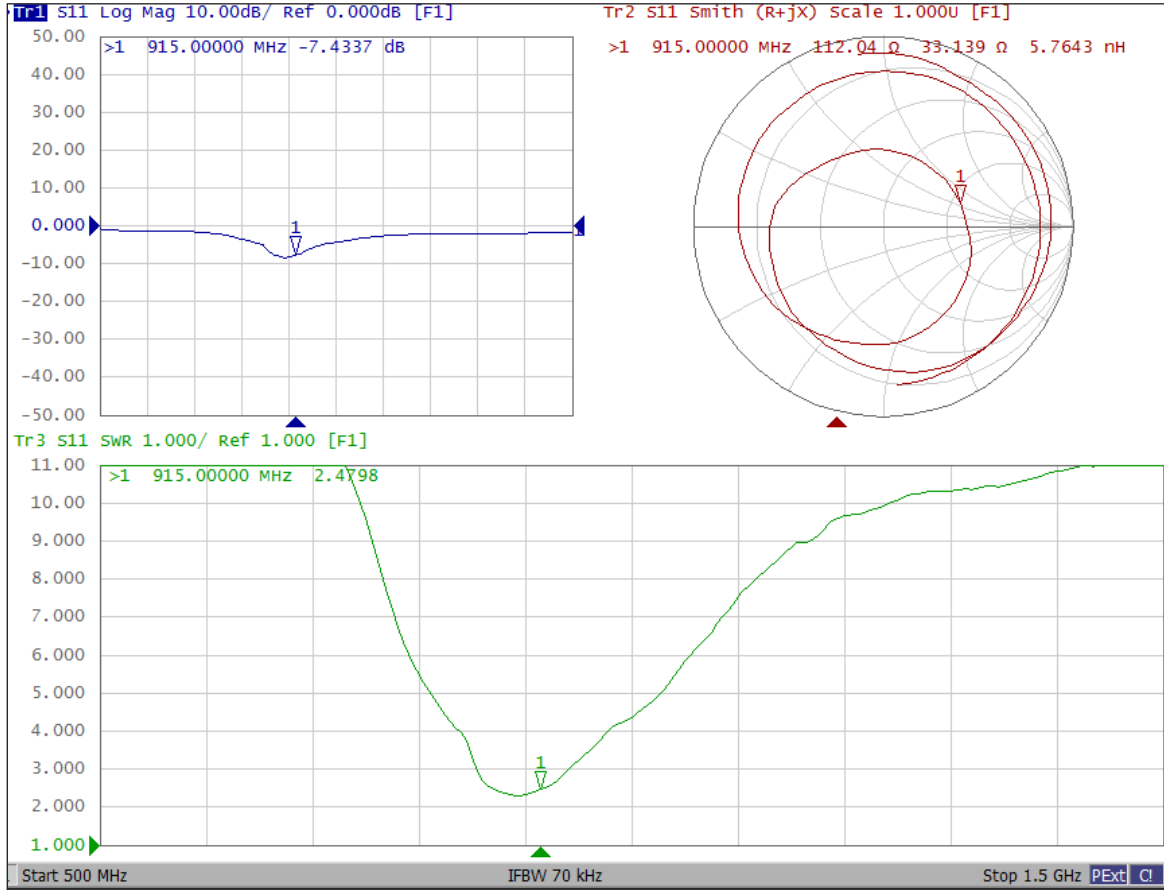


5 REFERENCE GUIDE

| | |
|---|--------------------|
| Technical Features | 895-935 MHz |
| Peak Gain | Up to 0.79 dBi |
| Max Efficiency | 51.84% |
| Input Impedance | 50Ω |
| Radiation Pattern | Omnidirectional |
| Polarization | Linear |
| Operating Temperature | -40°C to +85°C |
| Material Substance Compliance | RoHS Compliant |
| Note: All Data were measured with an evaluation board of 123 x 98 x 1.2 mm. All data might vary with applications. | |

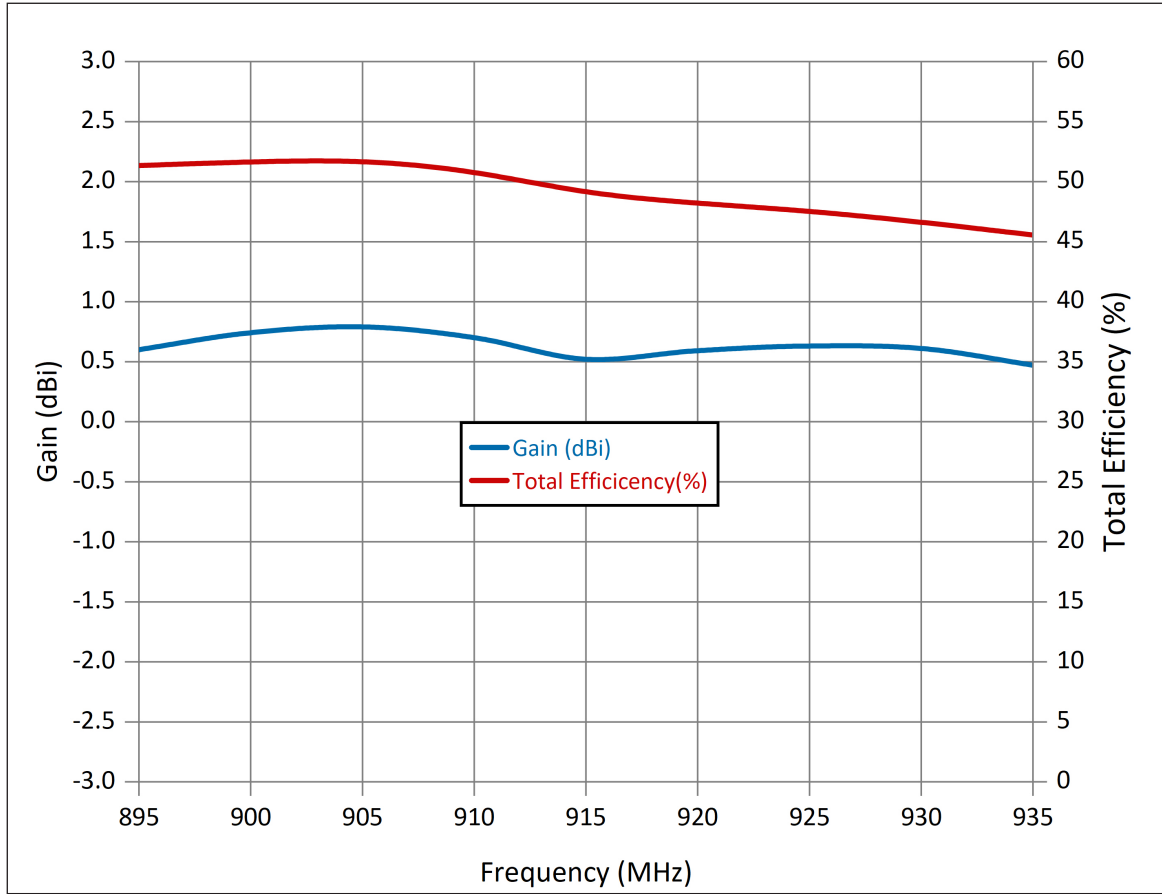
6 ELECTRICAL PERFORMANCE

6.1 S11 (dB)



Note: Data tested with an evaluation board of 123 x 98 x 1.2 mm

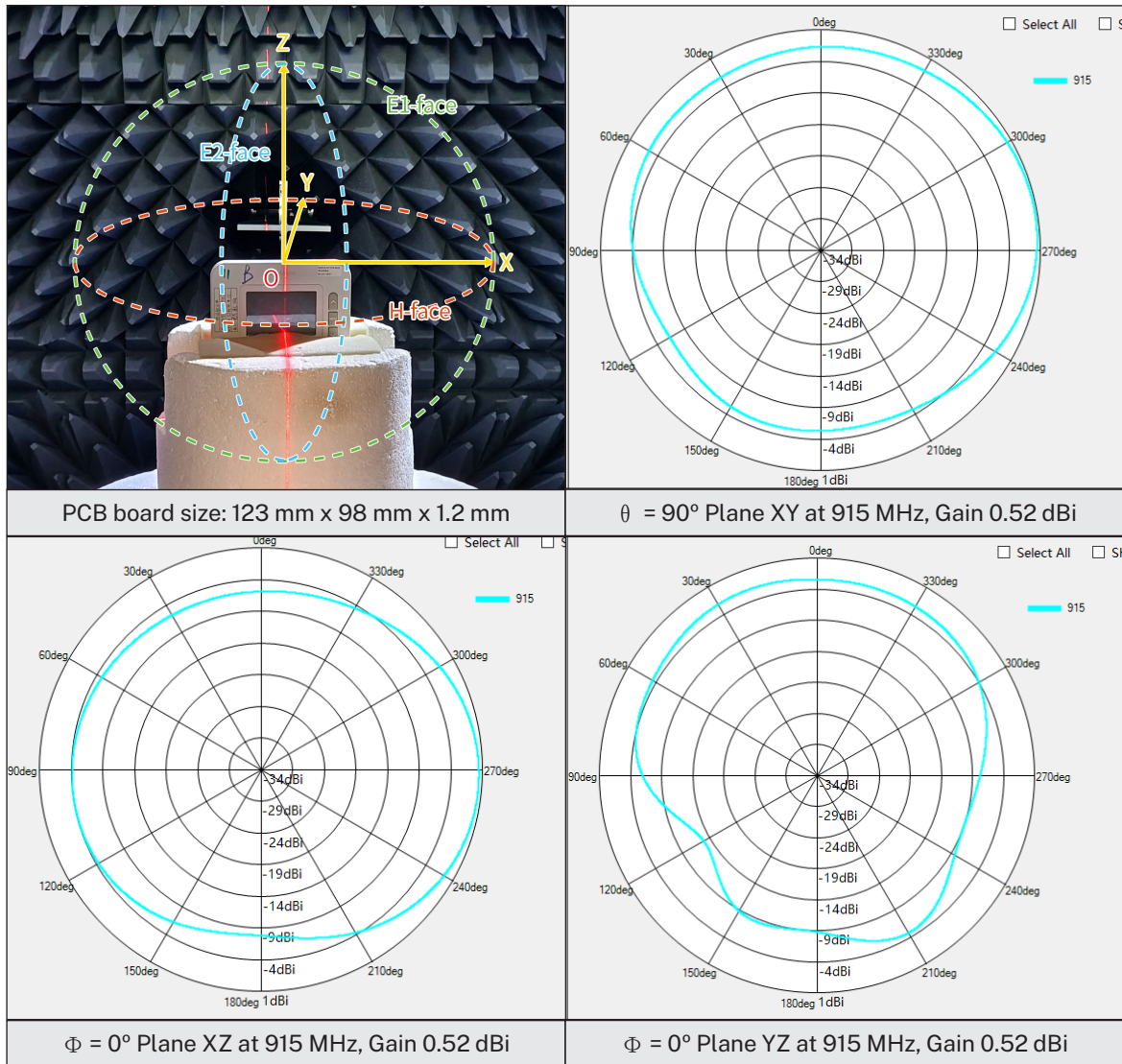
6.2 Gain (dBi) and Total Efficiency (%)



Note: Data tested with an evaluation board of 123 x 98 x 1.2 mm

| Frequency (MHz) | Efficiency (%) | Gain (dBi) |
|-----------------|----------------|------------|
| 895 | 51.34 | 0.6 |
| 900 | 51.66 | 0.74 |
| 905 | 51.84 | 0.79 |
| 910 | 50.94 | 0.7 |
| 915 | 48.96 | 0.52 |
| 920 | 48.19 | 0.59 |
| 925 | 47.57 | 0.63 |
| 930 | 46.63 | 0.61 |
| 935 | 45.55 | 0.47 |

6.3 Radiation Patterns (915 MHz)



Note: Data tested with an evaluation board of 123 x 98 x 1.2 mm

www.smdantenna.com

The materials provided herein, which are intended for illustration purposes only, are believed to be reliable and correct. However, no responsibility is further assumed for inaccuracies or incompleteness, and all such information shall be entirely at the user's risk. All information is subject to change without prior notice.

Copyright © 2024 ShenZhen MyAntenna RF Technology Co., Ltd. All Rights Reserved.