
FCC Test Report

Report No.: AGC00665141104FE03

FCC ID : 2ADN5BL300

APPLICATION PURPOSE : Original Equipment

PRODUCT DESIGNATION : Remote Controller

BRAND NAME : BLINC

MODEL NAME : BL-300

CLIENT : Shanghai Blinc Electronic & Technology Co., Ltd

DATE OF ISSUE : Nov.26, 2014

STANDARD(S) : FCC Part 15 Rules

REPORT VERSION : V1.0

Attestation of Global Compliance (Shenzhen) Co., Ltd



CAUTION:

This report shall not be reproduced except in full without the written permission of the test laboratory and shall not be quoted out of context.



Report Revise Record

Report Version	Revise Time	Issued Date	Valid Version	Notes
V1.0	/	Nov.26, 2014	Valid	Original Report

TABLE OF CONTENTS

1. VERIFICATION OF CONFORMITY 4

2. GENERAL INFORMATION 5

 2.1. PRODUCT DESCRIPTION 5

3. MEASUREMENT UNCERTAINTY 6

4. DESCRIPTION OF TEST MODES..... 6

5. SYSTEM TEST CONFIGURATION 6

 5.1. CONFIGURATION OF EUT SYSTEM..... 6

 5.3. SUMMARY OF TEST RESULTS..... 6

6. TEST FACILITY 7

7. 20DB BANDWIDTH 8

 7.1. MEASUREMENT PROCEDURE..... 8

 7.2. TEST SET-UP (BLOCK DIAGRAM OF CONFIGURATION) 8

 7.3. LIMITS AND MEASUREMENT RESULTS..... 8

8. RADIATED EMISSION 10

 8.1. MEASUREMENT PROCEDURE..... 10

 8.2. TEST SETUP 12

 8.3. TEST RESULT 13

9. BAND EDGE EMISSION 17

 9.1. MEASUREMENT PROCEDURE..... 17

 9.2. TEST SET-UP 17

 9.3 TEST RESULT 17

APPENDIX A: PHOTOGRAPHS OF TEST SETUP 19

APPENDIX B: PHOTOGRAPHS OF EUT 20

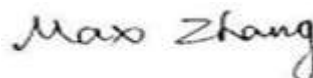
1. VERIFICATION OF CONFORMITY

Applicant	Shanghai Blinc Electronic & Technology Co., Ltd.
Address	Room 3099, 3rd Floor, No 1 Building, No.79 Aona Road, China (Shanghai)Pilot Free Trade Zone
Manufacturer	Shanghai Blinc Electronic & Technology Co., Ltd
Address	Room 3099, 3rd Floor, No 1 Building, No.79 Aona Road, China (Shanghai)Pilot Free Trade Zone
Product Designation	Remote Controller
Brand Name	BLINC
Test Model	BL-300
Date of test	Nov.17, 2014 to Nov.25, 2014
Deviation	None
Condition of Test Sample	Normal
Report Template	AGCRT-US-BR/RF (2013-03-01)

We hereby certify that:

The above equipment was tested by Attestation of Global Compliance (Shenzhen) Co., Ltd. The test data, data evaluation, test procedures, and equipment configurations shown in this report were made in accordance with the procedures given in ANSI C63.4 (2009) and the energy emitted by the sample EUT tested as described in this report is in compliance with radiated emission limits of FCC Rules Part 15.249.

Prepared By



Max Zhang

Nov.26, 2014

Checked By



Kidd Yang

Nov.26, 2014

Authorized By



Solger Zhang

Nov.26, 2014

2. GENERAL INFORMATION

2.1. PRODUCT DESCRIPTION

The EUT is “Remote Controller ” designed as a “RF Product”. It is designed by way of utilizing the FSK technology to achieve the system operation.

A major technical description of EUT is described as following

Operation Frequency	2449.5MHz
RF Output Power	0dBm(Max)
Modulation	FSK
Number of channels	1
Hardware Version	N/A
Software Version	N/A
Antenna Designation	Permanent Antenna
Antenna Gain	0 dBi
Power Supply	DC12V by battery

3. MEASUREMENT UNCERTAINTY

Conducted measurement: +/- 2.75dB

Radiated measurement: +/- 3.2dB

4. DESCRIPTION OF TEST MODES

NO.	TEST MODE DESCRIPTION
1	Transmitting mode

5. SYSTEM TEST CONFIGURATION

5.1. CONFIGURATION OF EUT SYSTEM

Configuration:



5.3. SUMMARY OF TEST RESULTS

FCC RULES	DESCRIPTION OF TEST	RESULT
§15.203	Antenna Requirement	Compliant
§15.215(c)	20 dB Bandwidth	Compliant
§15.205	Restricted Band of Operation	Compliant
§15.209 §15.249(a)	Radiated Emission	Compliant
§15.249(d)	Out of Band Emission	Compliant
§15.207(a)	Conducted Emission	N/A

6. TEST FACILITY

Site	Attestation of Global Compliance (Shenzhen) Co., Ltd
Location	B112-B113, Building 12, Baoan Building Materials Center, No.1 of Xixiang Inner Ring Road, Baoan District, Shenzhen, Guangdong, P.R.China
Description	The test site is constructed and calibrated to meet the FCC requirements in documents ANSI C63.4:2003.

ALL TEST EQUIPMENT LIST

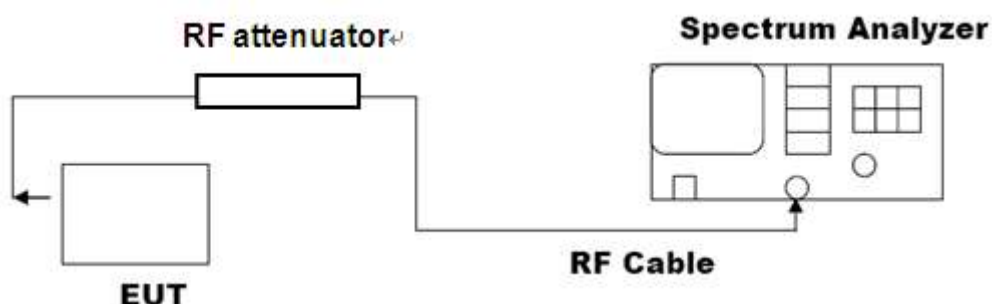
Description	Manufacturer	Model	Cal. Date	Cal. Due
Power Probe	R&S	URV5-Z2	07/30/2014	07/29/2015
RF attenuator	WEINSCHTEL CORP	58-30-33	07/25/2014	07/24/2015
Spectrum Analyzer	Agilent	E4440A	07/16/2014	07/15/2015
Amplifier	EM	BBV 9718	07/30/2014	07/29/2015
HORN ANTENNA	Schwarzbeck	3117	08/17/2014	08/16/2015
HORN ANTENNA	A.H. SYSTEMS INC.	SAS-574	07/16/2014	07/15/2015
EMI Test Receiver	Rohde & Schwarz	ESCI	07/25/2014	07/24/2015
Biological Antenna	EMCO	3142C	08/17/2014	08/16/2015
LISN	R&S	ESH3-Z5	09/05/2014	09/04/2015
Loop Antenna	LAPLACE	RF300	07/30/2014	07/29/2015
Isolation Transformer	LETEAC	LTBK	07/16/2014	07/15/2015
RF CABLE	SUIRONG	9KHZ-30MHZ	07/15/2014	07/14/2015
RF CABLE	SUIRONG	30MHZ-18GHZ	07/15/2014	07/14/2015
Conduction Cable	Sat	CE1	07/15/2014	07/14/2015

7. 20DB BANDWIDTH

7.1. MEASUREMENT PROCEDURE

1. Connect EUT RF output port to the Spectrum Analyzer through an RF attenuator
2. Set the EUT Work on the top, the middle and the bottom operation frequency individually.
3. RBW=100kHz, VBW \geq RBW; Sweep = auto; Detector function = peak
4. Set SPA Trace 1 Max hold, then View.

7.2. TEST SET-UP (BLOCK DIAGRAM OF CONFIGURATION)

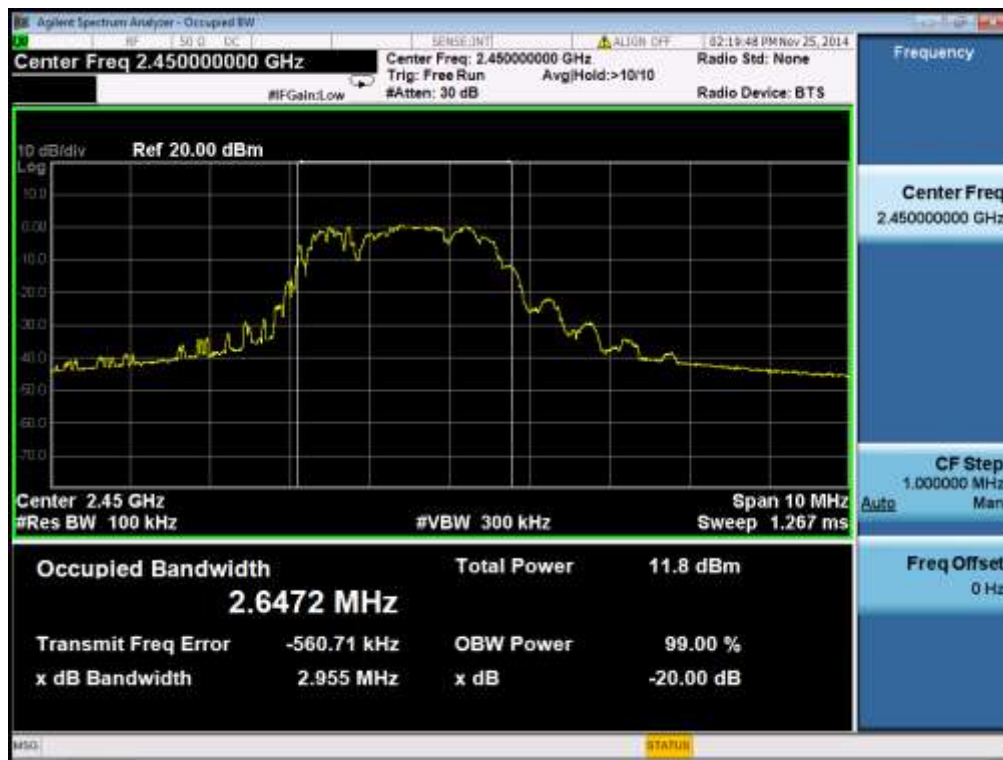


7.3. LIMITS AND MEASUREMENT RESULTS

Channel	Channel Frequency(MHz)	20dB Bandwidth(MHz)
Normal	2449.5	2.955

According to FCC 15.215(c), must be designed to ensure that the 20dB bandwidth of the emission, or whatever bandwidth may otherwise be specified in the specific rule section under which the equipment operates, is contained within the frequency band designated in the rule section under which the equipment is operated .

TEST PLOT OF BANDWIDTH



8. RADIATED EMISSION

8.1. MEASUREMENT PROCEDURE

1. Configure the EUT according to ANSI C63.4. The EUT was placed on the top of the turntable 0.8 meter above ground. The phase center of the receiving antenna mounted on the top of a height-variable antenna tower was placed 3 meters far away from the turntable.
2. Power on the EUT and all the supporting units. The turntable was rotated by 360 degrees to determine the position of the highest radiation.
3. The height of the broadband receiving antenna was varied between one meter and four meters above ground to find the maximum emissions field strength of both horizontal and vertical polarization.
4. For each suspected emissions, the antenna tower was scan (from 1 M to 4 M) and then the turntable was rotated (from 0 degree to 360 degrees) to find the maximum reading.
5. Set the test-receiver system to Peak or CISPR quasi-peak Detect Function with specified bandwidth under Maximum Hold Mode.
6. For emissions above 1GHz, use 1MHz VBW and RBW for peak reading. Then 1MHz RBW and 10Hz VBW for average reading in spectrum analyzer.
7. When the radiated emissions limits are expressed in terms of the average value of the emissions, and pulsed operation is employed, the measurement field strength shall be determined by averaging over one complete pulse train, including blanking intervals, as long as the pulse train does not exceed 0.1 seconds. As an alternative (provided the transmitter operates for longer than 0.1 seconds) or in cases where the pulse train exceeds 0.1 seconds, the measured field strength shall be determined from the average absolute voltage during a 0.1 second interval during which the field strength is at its maximum values.
8. If the emissions level of the EUT in peak mode was 3 dB lower than the average limit specified, then testing will be stopped and peak values of EUT will be reported, otherwise, the emissions which do not have 3 dB margin will be repeated one by one using the quasi-peak method for below 1GHz.
9. For testing above 1GHz, the emissions level of the EUT in peak mode was lower than average limit (that means the emissions level in peak mode also complies with the limit in average mode), then testing will be stopped and peak values of EUT will be reported, otherwise, the emissions will be measured in average mode again and reported.
10. In case the emission is lower than 30MHz, loop antenna has to be used for measurement and the recorded data should be QP measured by receiver. High - Low scan is not required in this case.

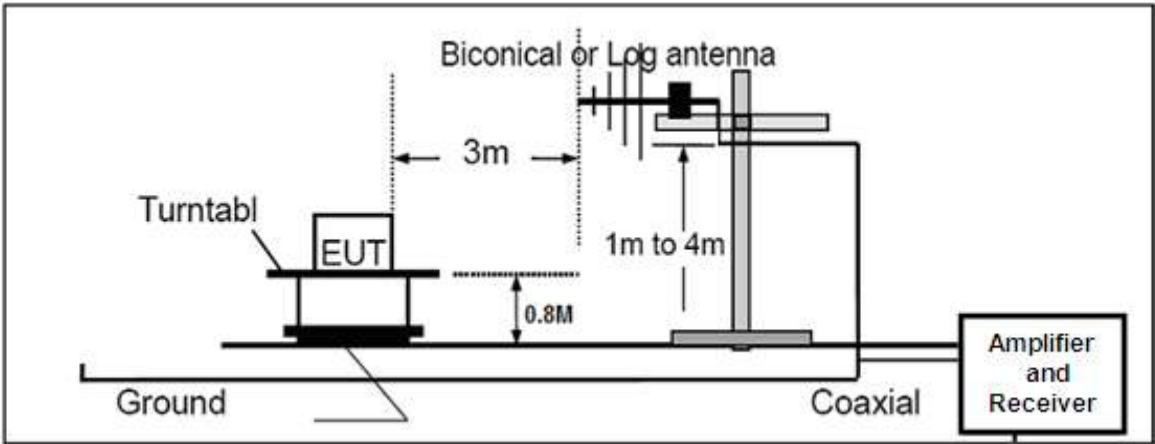
The following table is the setting of spectrum analyzer and receiver.

Spectrum Parameter	Setting
Start ~Stop Frequency	9KHz~150KHz/RB 200Hz for QP
Start ~Stop Frequency	150KHz~30MHz/RB 9KHz for QP
Start ~Stop Frequency	30MHz~1000MHz/RB 120KHz for QP
Start ~Stop Frequency	1GHz~26.5GHz 1MHz/1MHz for Peak, 1MHz/10Hz for Average

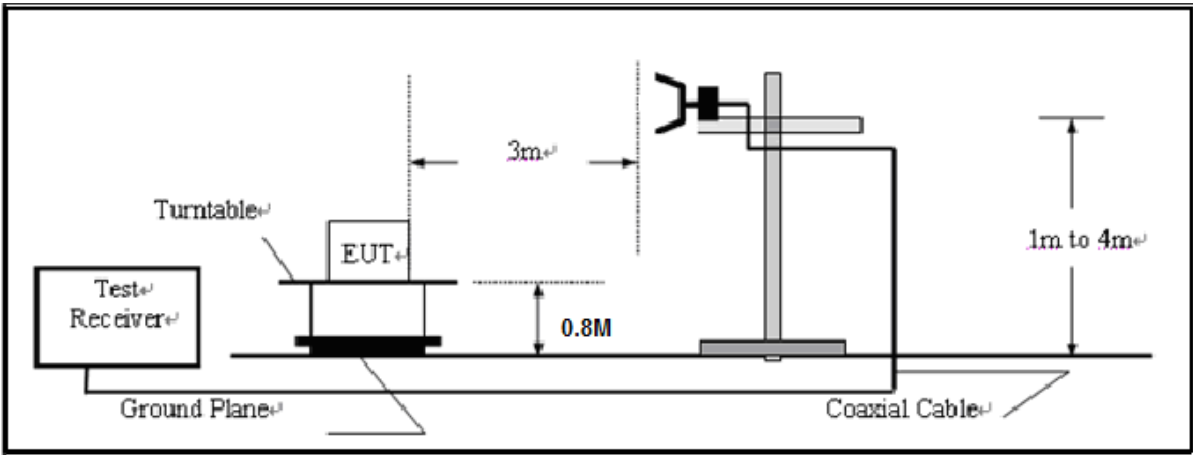
Receiver Parameter	Setting
Start ~Stop Frequency	9KHz~150KHz/RB 200Hz for QP
Start ~Stop Frequency	150KHz~30MHz/RB 9KHz for QP
Start ~Stop Frequency	30MHz~1000MHz/RB 120KHz for QP

8.2. TEST SETUP

RADIATED EMISSION TEST SETUP 30MHz-1000MHz



RADIATED EMISSION TEST SETUP ABOVE 1000MHz

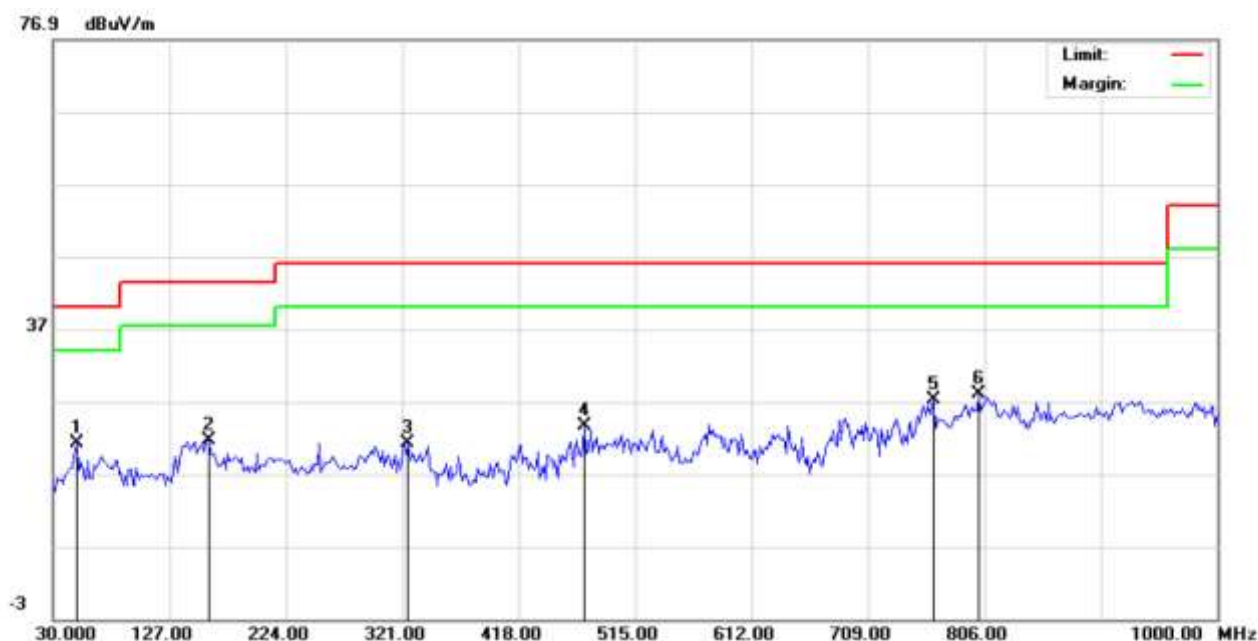


8.3. TEST RESULT

RADIATED EMISSION BELOW 30MHZ

No emission found between lowest internal used/generated frequencies to 30MHz.

RADIATED EMISSION BELOW 1GHZ-Horizontal



Site: site #1
Limit: FCC Class B 3M Radiation
EUT: Remote controller
M/N: BL-300
Mode: Normal
Note:

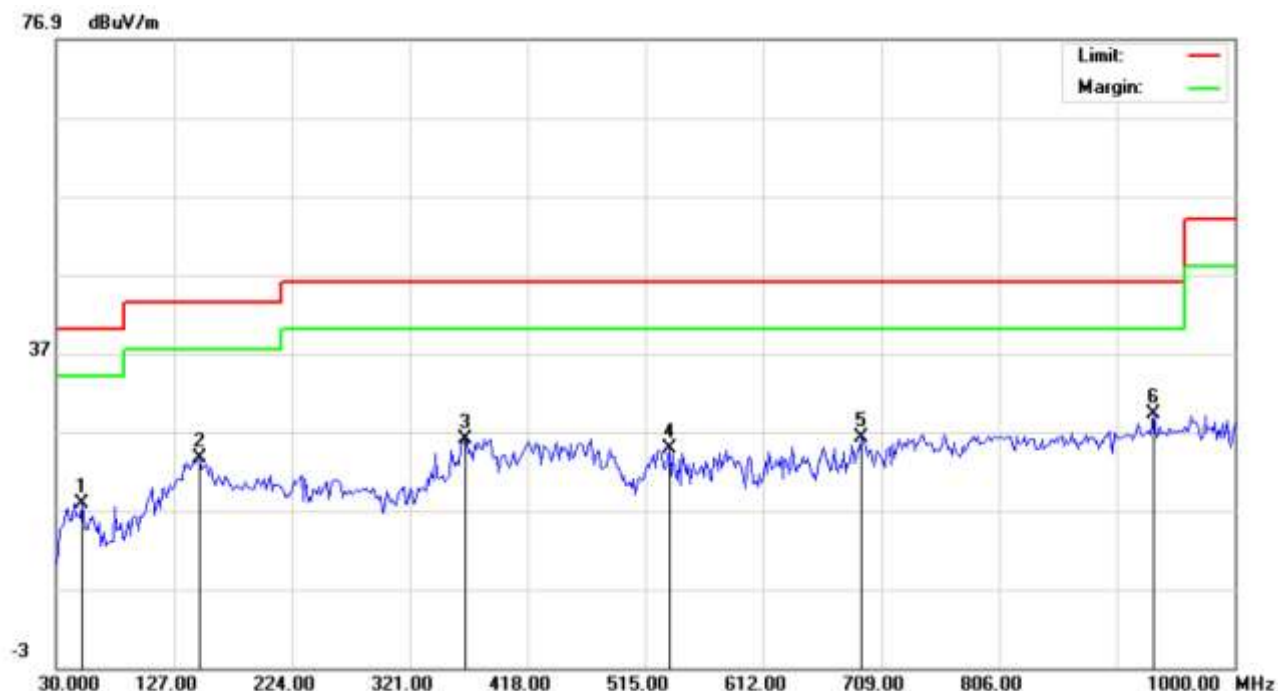
Polarization: **Horizontal**
Power: DC 12V
Distance: 3m

Temperature: 26
Humidity: 60 %

No.	Mk	Freq.	Reading	Factor	Measurement	Limit	Over	Detector	Antenna Height	Table Degree	Comment
		MHz	dBuV	dB/m	dBuV/m	dBuV/m	dB		cm	degree	
1		49.4000	10.01	11.28	21.29	40.00	-18.71	peak			
2		159.3333	6.30	15.33	21.63	43.50	-21.87	peak			
3		325.8500	4.16	17.13	21.29	46.00	-24.71	peak			
4		472.9667	2.85	20.84	23.69	46.00	-22.31	peak			
5		763.9667	0.41	26.82	27.23	46.00	-18.77	peak			
6	*	801.1500	0.69	27.32	28.01	46.00	-17.99	peak			

RESULT: PASS

RADIATED EMISSION BELOW 1GHZ-Vertical



Site: site #1
Limit: FCC Class B 3M Radiation
EUT: Remote controller
M/N: BL-300
Mode: Normal
Note:

Polarization: **Vertical**
Power: DC 12V
Distance: 3m

Temperature: 26
Humidity: 60 %

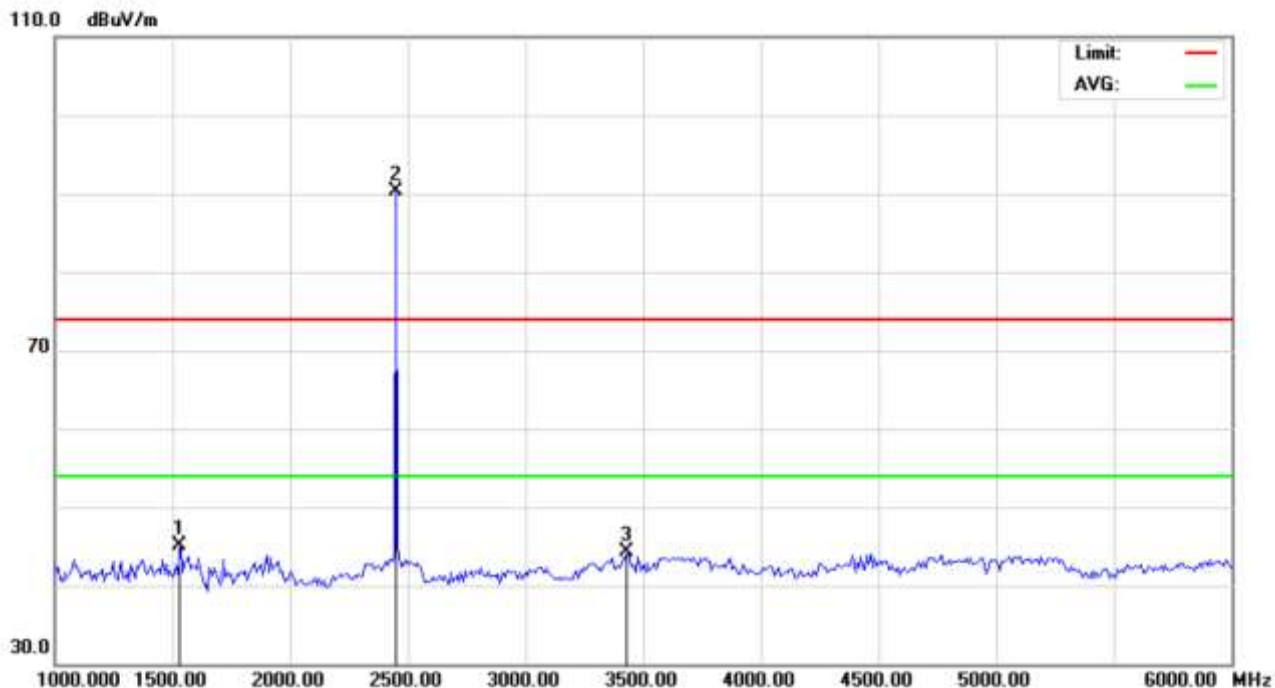
No.	Mk	Freq.	Reading	Factor	Measurement	Limit	Over	Detector	Antenna Height	Table Degree	Comment
		MHz	dBuV	dB/m	dBuV/m	dBuV/m	dB		cm	degree	
1		51.0167	9.57	8.23	17.80	40.00	-22.20	peak			
2		148.0167	8.26	15.25	23.51	43.50	-19.99	peak			
3		366.2667	7.22	18.85	26.07	46.00	-19.93	peak			
4		534.4000	2.80	22.06	24.86	46.00	-21.14	peak			
5		692.8333	1.28	25.00	26.28	46.00	-19.72	peak			
6	*	933.7167	-0.35	29.55	29.20	46.00	-16.80	peak			

RESULT: PASS

Note: 1. Factor=Antenna Factor + Cable loss, Margin=Measurement-Limit.

2. The "Factor" value can be calculated automatically by software of measurement system.

RADIATED EMISSION ABOVE 1GHZ (1-10th Harmonics) -Horizontal

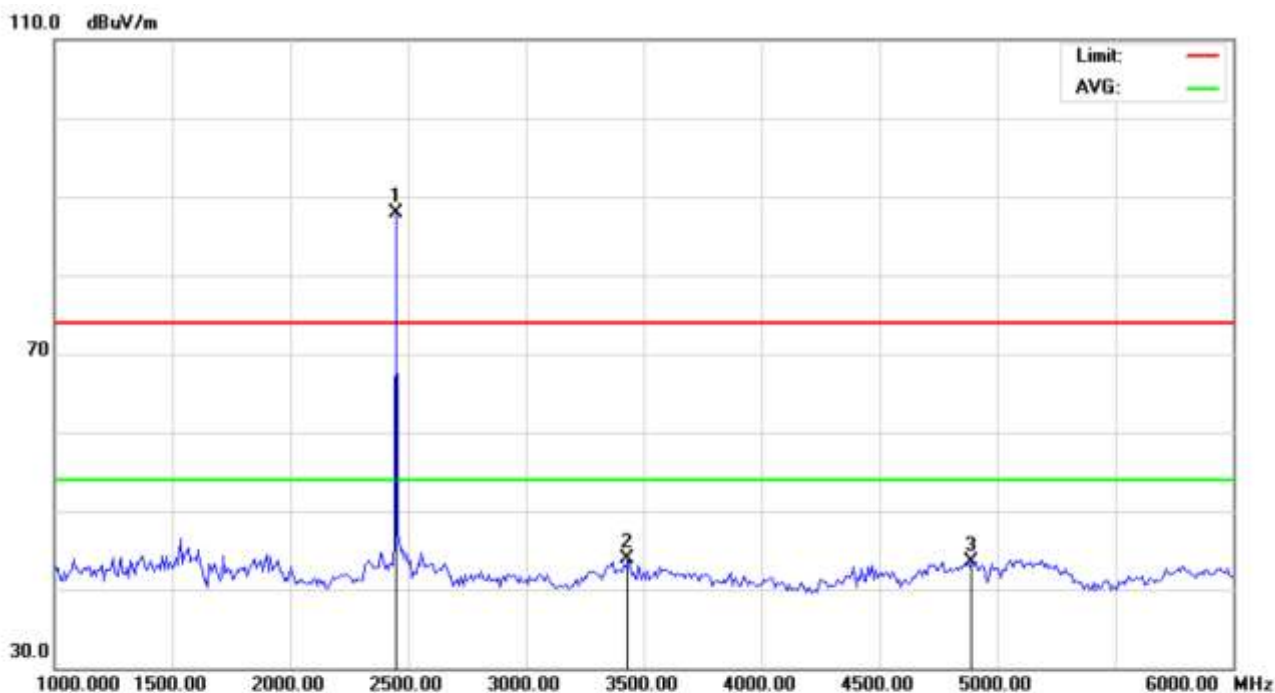


Site: site #1 Polarization: **Horizontal** Temperature: 26
Limit: FCC Class B 3M Radiation above 1GHZ(PK) Power: DC 12V Humidity: 60 %
EUT: Remote controller Distance: 3m
M/N: BL-300
Mode: Normal
Note:

No.	Mk	Freq.	Reading	Factor	Measurement	Limit	Over	Detector	Antenna Height	Table Degree	Comment
		MHz	dBuV	dB/m	dBuV/m	dBuV/m	dB		cm	degree	
1		1533.333	12.12	32.92	45.04	74.00	-28.96	peak			
2	*	2450.000	52.92	37.42	90.34	74.00	16.34	peak			
3		3433.333	3.45	40.89	44.34	74.00	-29.66	peak			

RESULT: PASS

RADIATED EMISSION ABOVE 1GHZ (1-10th Harmonics) -Vertical



Site: site #1 Polarization: **Vertical** Temperature: 26
Limit: FCC Class B 3M Radiation above 1GHZ(PK) Power: DC 12V Humidity: 60 %
EUT: Remote controller Distance: 3m
M/N: BL-300
Mode: Normal
Note:

No.	Mk	Freq.	Reading	Factor	Measurement	Limit	Over	Detector	Antenna Height	Table Degree	Comment
		MHz	dBuV	dB/m	dBuV/m	dBuV/m	dB		cm	degree	
1	*	2450.000	50.42	37.42	87.84	74.00	13.84	peak			
2		3433.333	2.95	40.89	43.84	74.00	-30.16	peak			
3		4891.667	43.48	0.00	43.48	74.00	-30.52	peak			

RESULT: PASS

Note: 6~25GHz at least have 20dB margin. No recording in the test report.

Factor=Antenna Factor + Cable loss - Amplifier gain, Margin=Measurement-Limit.

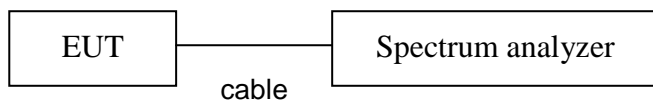
The "Factor" value can be calculated automatically by software of measurement system.

9. BAND EDGE EMISSION

9.1. MEASUREMENT PROCEDURE

As the radiation test, set the Lowest and Highest Transmitting Channel, observed the outside band of 2400MHz to 2483.5MHz, then mark the higher-level emission for comparing with the FCC rules.

9.2. TEST SET-UP



9.3 TEST RESULT

Frequency(MHz)	Limit(dBuv)	Result
Low Edge	<54	Pass
High Edge	<54	Pass

The edge emissions are shall be attenuated by at least 50 dB below the level of the fundamental.
Please refer to the test plots below.

Low band edge-AV



High band edge-AV

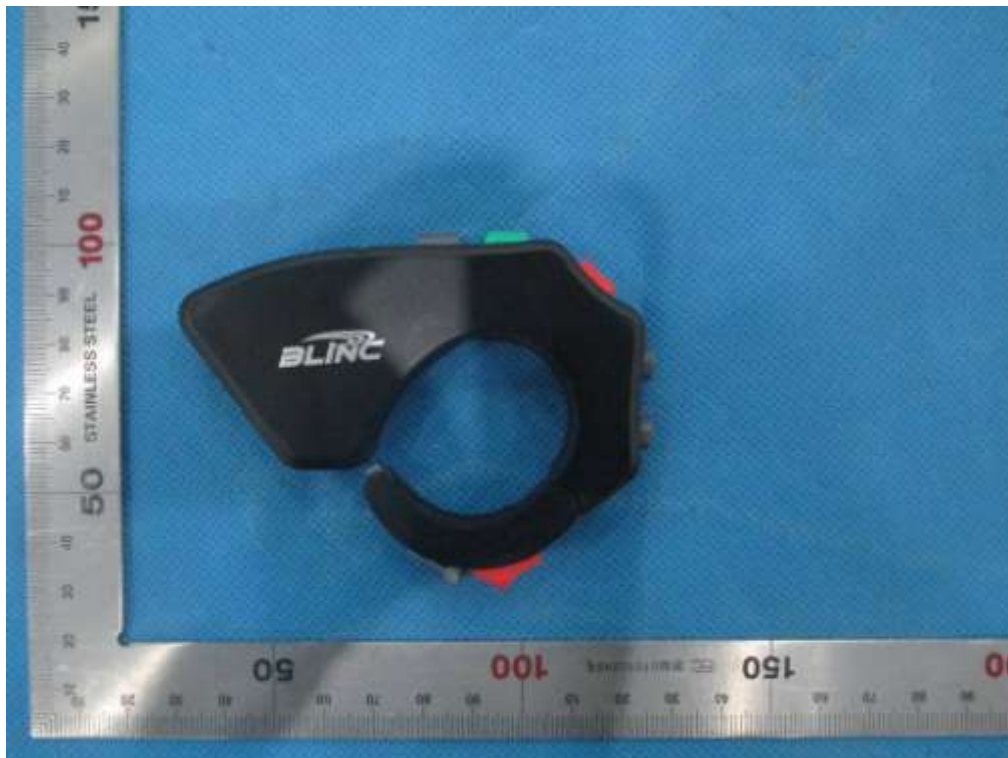


APPENDIX A: PHOTOGRAPHS OF TEST SETUP
FCC RADIATED EMISSION TEST SETUP

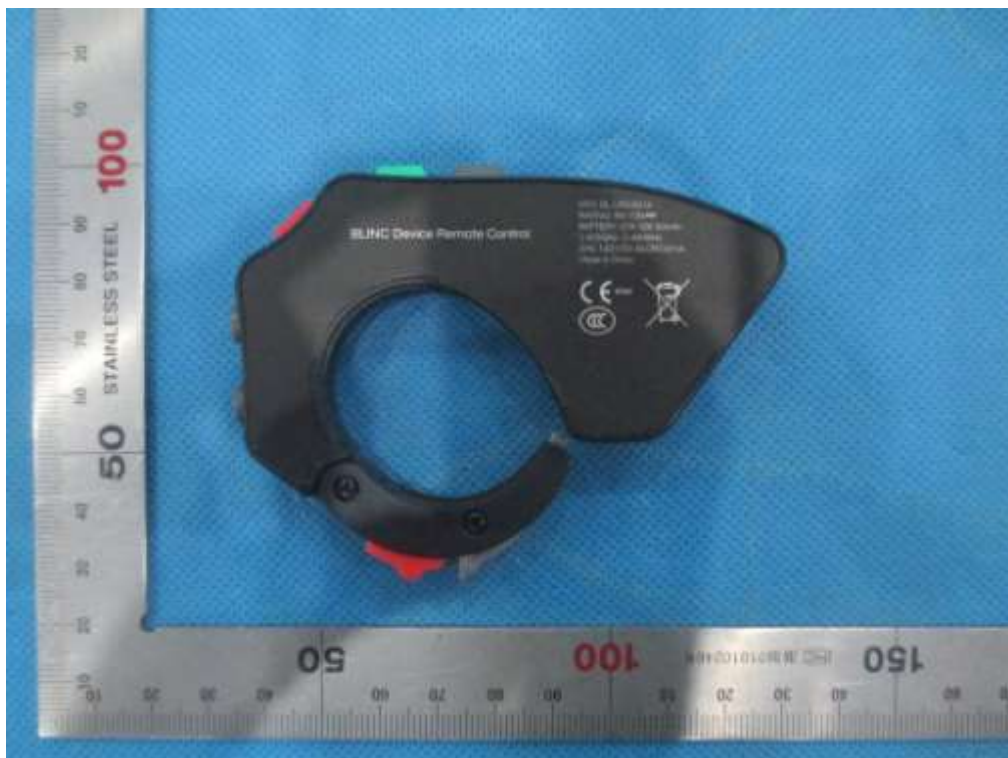


APPENDIX B: PHOTOGRAPHS OF EUT

TOP VIEW OF EUT



BOTTOM VIEW OF EUT



FRONT VIEW OF EUT



BACK VIEW OF EUT



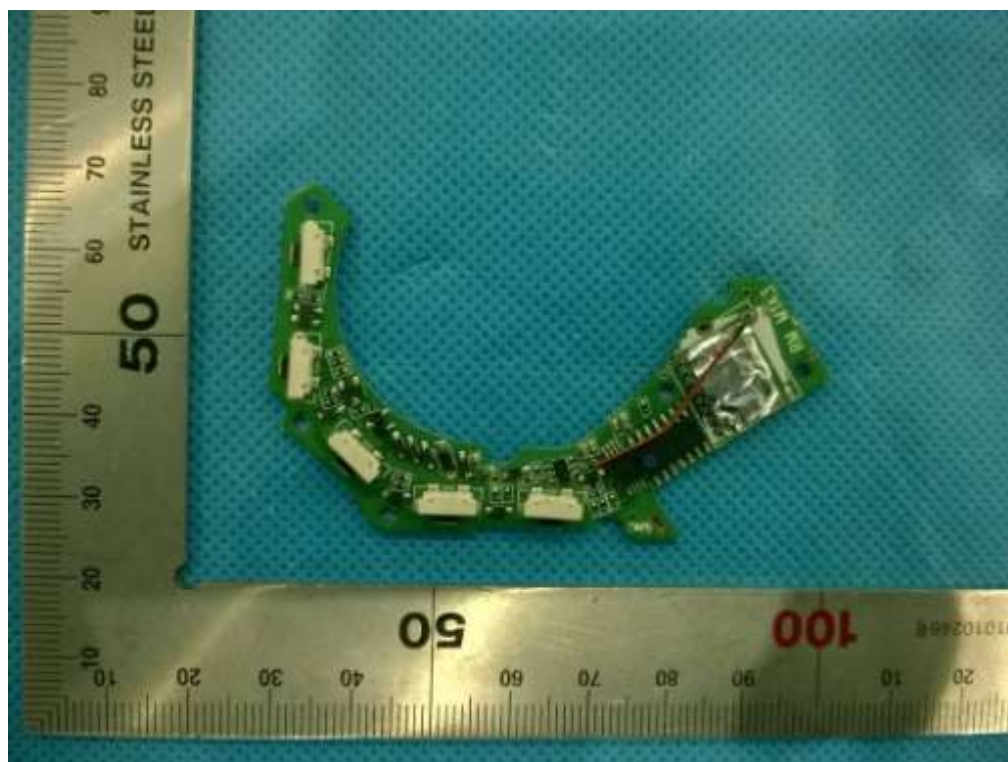
LEFT VIEW OF EUT



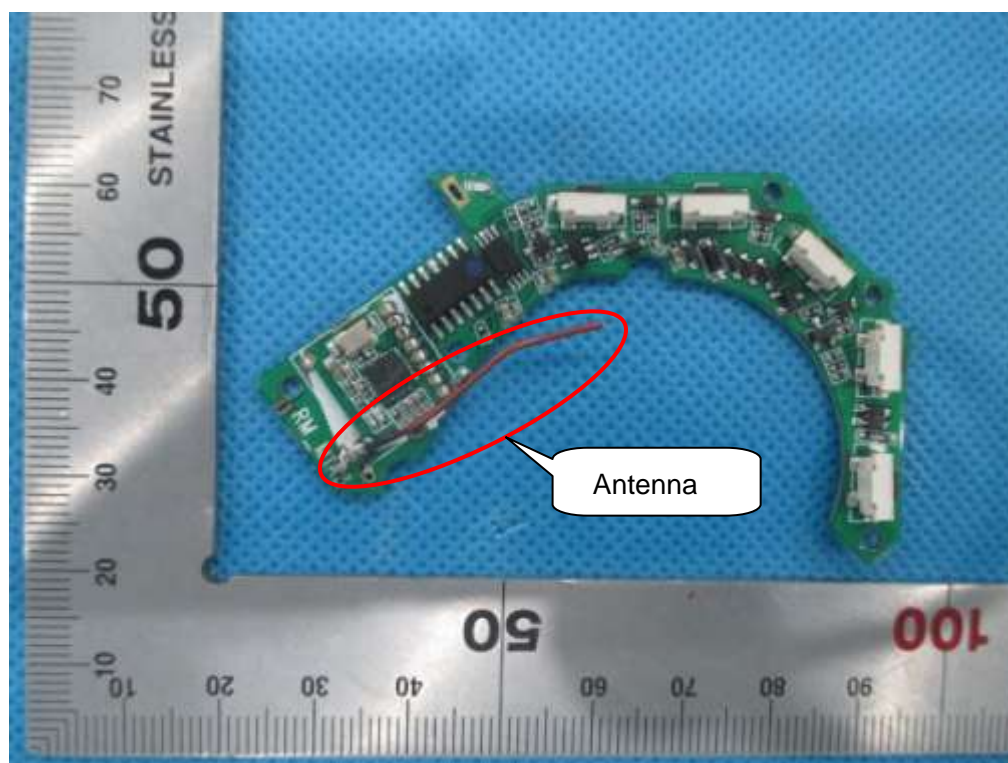
RIGHT VIEW OF EUT



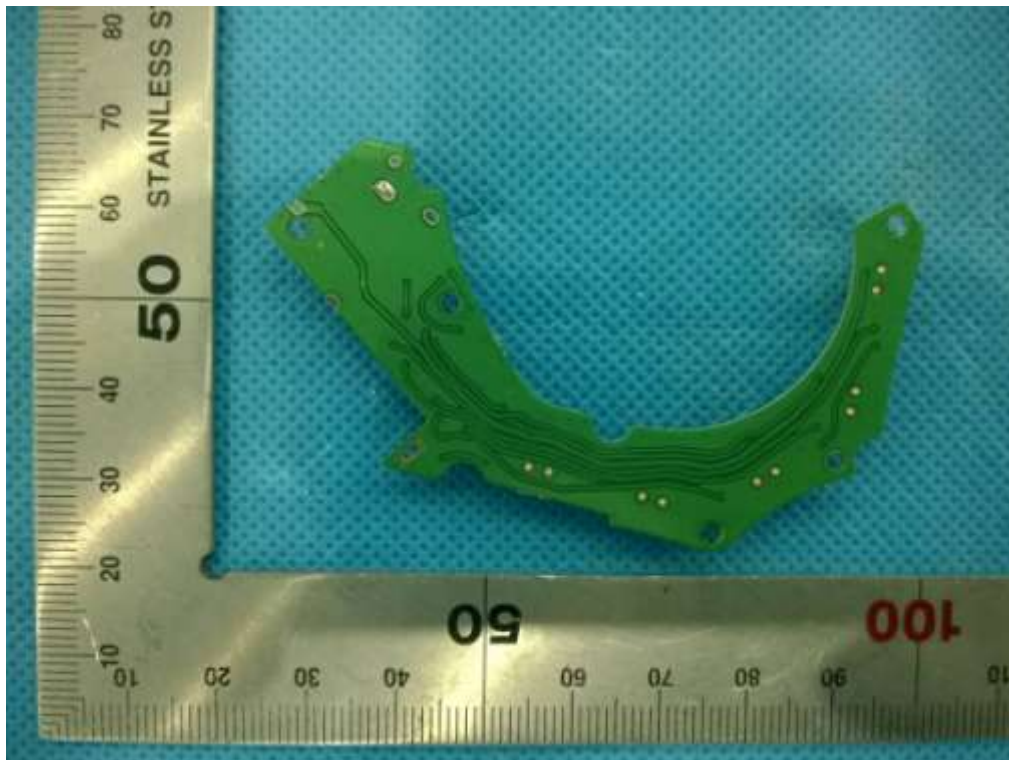
INTERNAL VIEW OF EUT-1



INTERNAL VIEW OF EUT-2



INTERNAL VIEW OF EUT-3



-----END OF REPORT-----