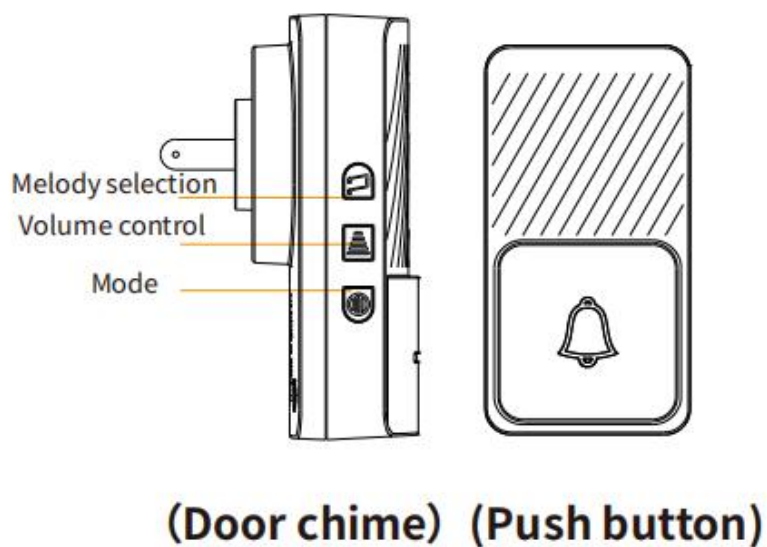


User Manual

Door bell

Model: 2301SF1T1R



A. Important Installation Instructions

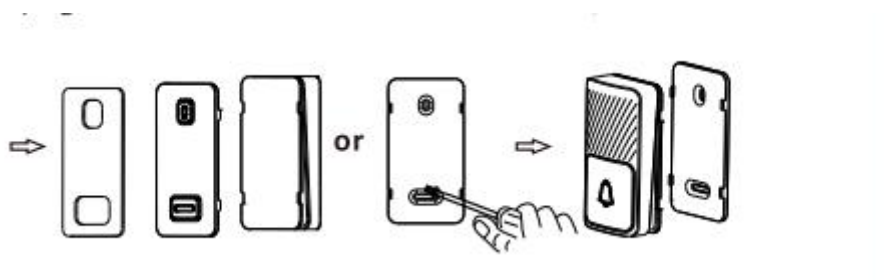
1. Door chime is designed for indoor use only.
2. Avoid mounting the push button on metal frames, and make sure the mounting surface is smooth.
3. Avoid mounting the chime above heat sources such as radiators, or in humid circumstances such as a kitchen or bathroom.
4. Please do not open and repair the device without professional guide in order to avoid any breakdown of components.
5. Please do not expose it to the sun and rain for a long time and keep it away from metallic object when device is in use.
6. The transmitting range of the doorbell depends on installation location and signal attenuation of wall or floor.

7. If not using the doorbell for long periods, unplug the chime from socket.

B. Mount Door Chime

Just plug the door chime into standard outlet in room, then it will work.

C. Mount Push Button



1. Use either screws or double-sided tape to mount push button.
2. To mount with screws, remove back of case by pushing tab on bottom with a small screwdriver.
3. Use screws to attach back of case to door jamb or wall, then lock the front of push button on it.
4. To mount with double sided tape, make sure the surface of the door jamb or wall is clean and smooth.

D. Function Key Description

1. **SET volume level:** Press the volume button to control the volume of the melody. There are 4 adjustable volume levels.
2. **Change melodies:** Press the melody button to select the melody you like. There are 50 different melodies.
3. **Reset:** Press and hold the Melody button for 3 seconds, the melody will be reset to the default one.

E. Working Modes

1. This doorbell comes with a memory function in case of unexpected power down.
2. Change working modes for the doorbell:

Press the mode button to select

- ① LED light flashing only
- ② Sound only
- ③ LED light flashing and sound

F. How to match more devices – Code Learning Function:

This unit comes with a code learning function, which allows you to expand your unit with more push button or door chimes.

1. Plug the chime into the socket and power on.
2. Press the Mode button for 3 seconds to enter the code learning mode.
3. Press the push button, if a melody is heard, then code learning is successful. If not, repeat the above step to learn the code again.

Frequently Asked Question (FAQ)

Problems

1. Chime does not sound
 - Check whether the plug is well inserted into the socket.
 - Make sure the code of push button and chime match properly. If not, please follow the code learning instruction to match the code.
2. Chime does not work when installed
 - Do not mount the chime or push button on metal or too close to metal studs. This may reduce the transmitting range.
 - Do not mount the chime too close to ground level concrete slabs. This may also reduce the range. Mount the chime away from the floor.
 - Try different locations for the chime closer to the push button. Also try to orient the chime at a different angle to increase the range.

FCC Statement

This equipment has been tested and found to comply with the limits for a Class B digital device, pursuant to part 15 of the FCC Rules. These limits are designed to provide reasonable protection

against harmful interference in a residential installation. This equipment generates, uses and can radiate radio frequency energy and, if not installed and used in accordance with the instructions, may cause harmful interference to radio communications. However, there is no guarantee that interference will not occur in a particular installation. If this equipment does cause harmful interference to radio or television reception, which can be determined by turning the equipment off and on, the user is encouraged to try to correct the interference by one or more of the following measures:

Reorient or relocate the receiving antenna.

Increase the separation between the equipment and receiver.

Connect the equipment into an outlet on a circuit different from that to which the receiver is connected.

Consult the dealer or an experienced radio/TV technician for help.

Caution: Any changes or modifications to this device not explicitly approved by manufacturer could void your authority to operate this equipment.

This device complies with part 15 of the FCC Rules. Operation is subject to the following two conditions: (1) This device may not cause harmful interference, and (2) this device must accept any interference received, including interference that may cause undesired operation.

RF Exposure Information

The device has been evaluated to meet general RF exposure requirement. The device can be used in portable exposure condition without restriction.