

TABLE LAMP INSTRUCTION MANUAL

Thank you very much for choosing our products. To better and safely use our products, please read this manual in detail. Some models have the dual function of wireless charging + desk lamplighting, and some models also have USB charging function, which can charge the tablet computer, mobile phone, e-book, game console, digital camera, IPOD, IPHONE, IPAD, MP4, MP5, PMP, PSP and other Qi wireless charging and USB charging devices.

Please confirm the functions of the product you purchased, because of the large configuration of our products, this manual basically displays the functions of all models, which does not mean that your current production has all the functions in the manual. To confirm the current product features, please contact the dealer.

Subsequent product appearance and features may be changed without prior notice.

Notice

1.Warning: Failure to follow the following safety instructions may lead to fire, electric shock and damage to electrical equipment. Do not touch, remove, short circuit, placed in high temperature, water to avoid hair Born in danger. If the host is expanding or the charged device is expanding, please stop using it immediately.

2. Please place the product in a place where children are not easy to contact it to avoid accidents.

3. Do not dismantle the product, hit or throw it into the fire water.

4. This product shall not be modified without authorization.

5. Pay attention to moisture and waterproof.

6. The accessories included in this product can only be used at the specified voltage, Do not access other voltages, especially the bulb / lamp tube with this product cannot be used on other products, otherwise it may lead to accidents. The voltage will be shown on the bulb label, such as 12V or 5V when use Non-220V bulbs. If you need buy the light bulb, please contact the customer service staff.

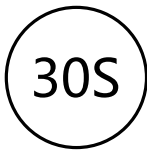
Use-method

1. Open the package and take the desk lamp. If the package has a power adapter, the power cord DC port is inserted in the side power hole of the desk lamp. Please connect the power adapter or plug to the mains power supply.

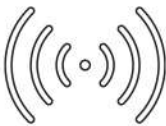
2. If the button switch is configured, the button switch can control the opening and closing of the bulb. If the use of three-color light bulb, turn off the light and then turn on the light ,it can change the color temperature.

If the configured switch is shown below

The short touch is for turning on or turning off the light, the long touch is to adjust the brightness, some models have a three-color lighting function, the switch sequence is: on-switch color temperature-switch color temperature-off. Turn off the switch for 30 seconds, flash the light source or take a breath, and then automatically turn it off after 30 seconds. At this time, if you need to cancel the countdown, touch the switch again. For some models, long press the "30S" to open the key for 2 seconds, and enter the small night light mode.



Turn off the switch for 30 seconds, flash the light source or take a breath, and then automatically turn off after 30 seconds. At this time, if you need to cancel the countdown, touch the switch again. For some models, long press the "30S" to open the key for 2 seconds, and enter the small night light mode.

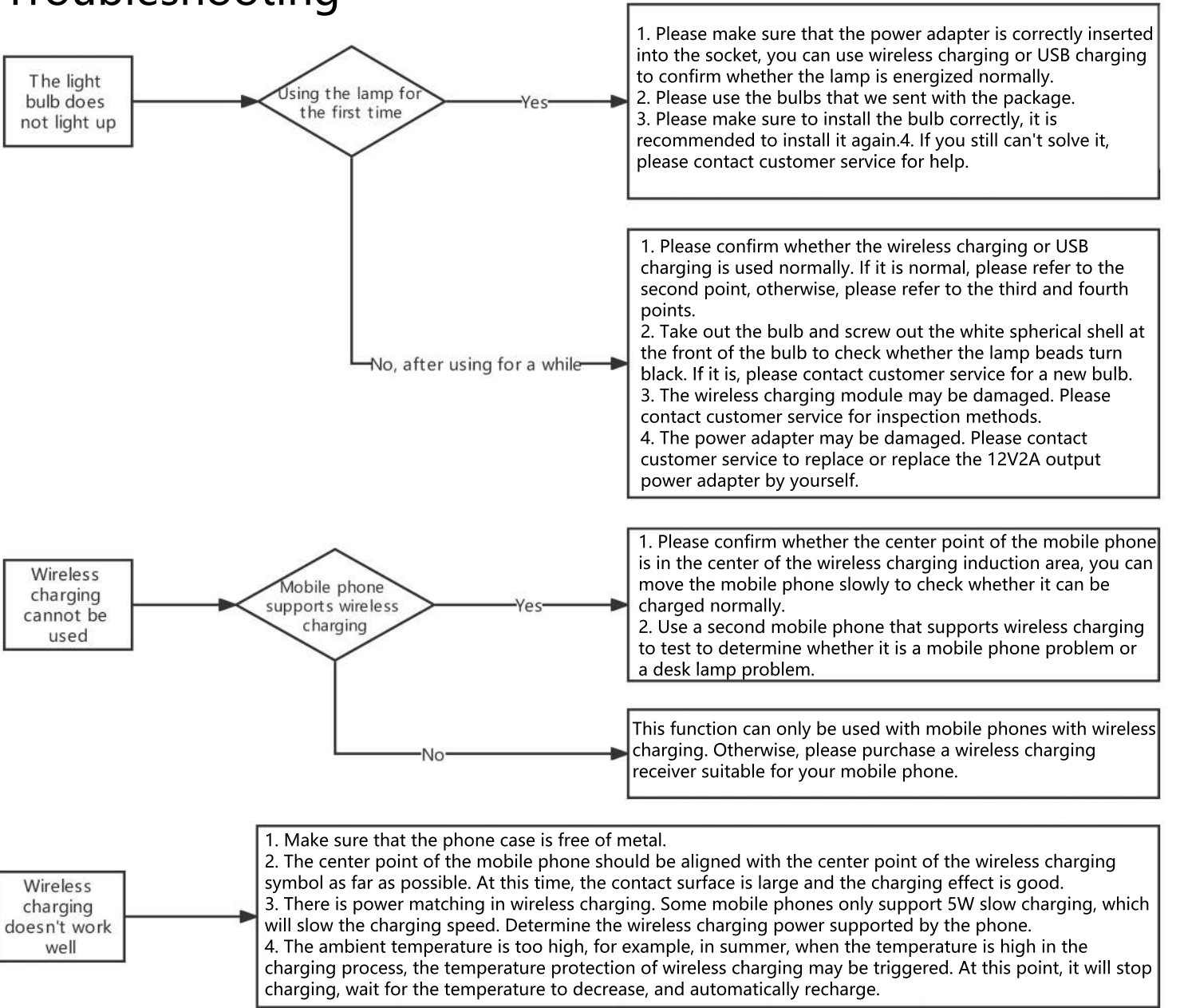


Wireless charging and sensing area. If your phone supports QI wireless charging, you can align the phone center with the wireless charging area center and automatically charge after a few seconds. During the charging process, the area and the heat behind the phone is a normal charging phenomenon.



USB output. Through this interface, small electronic devices can be charged. The maximum output is 5V2A.

Troubleshooting



FCC Statement

This device complies with part 15 of the FCC Rules. Operation is

Subject To the following two conditions:

(1) This device may not cause harmful interference, and (2) this device must accept any interference received, including interference that may cause undesired operation. Changes or modifications not explicitly approved by the party responsible for compliance could void the user's authority to operate this equipment.

Note: this equipment has been tested and found to comply with the limits for a Class B digital device, pursuant to part 15 of the FCC Rules. These limits are designed to provide reasonable protection against harmful interference in a residential installation.

This equipment generates uses and can radiate radio frequency energy and, if not installed and used in accordance with the instructions, may cause harmful interference to radio communications. However, there is no guarantee that interference will not occur in a particular installation. If this equipment does cause harmful interference to radio or television reception, which can be determined by turning the equipment off and on, the user is encouraged to try to correct the interference by one or more of the following measures:

- Reorient or relocate the receiving antenna.
- Increase the separation between the equipment and receiver.
- Connect the equipment into an outlet on a circuit different from that to which the receiver is connected.
- Consult the dealer or an experienced radio/TV technician for help.

The equipment complies with FCC radiation exposure limits set forth for an uncontrolled environment. During the operation of device a distance of 15 cm surrounding the device and 20 cm above the top surface of the device must be respected.