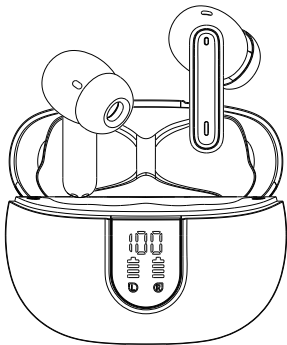


A9 *wireless earphones*

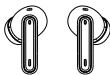


User Manual

Contents

Packing List	1
Product Overview	2
Pairing	3-4
Wear	5
Power On	6
Power Off	7
Phone Calls Control	8
Music	9
Activate "Siri"	10
Resetting	10-11
Charging	11-13
Specification	14
Safety Instruction	15
Tips	16-18

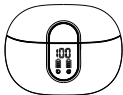
Packing List



Earbuds * 2



Ear tips * 6 [S/M/L]
"M" ear tips have already
on the earbuds



Charging Case



Type-C Charge Cable

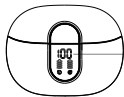


User Manual

Package Contents:

- A. Earbuds x 2
- B. Ear Tips x 6
- C. Charging Case
- D. Type-C Charging Cable x 1
- E. User Manual x 1

Product Overview



①

① Digital Display

②

② TYPE-C Charging Port



③

③ Indicator Light

④

④ MFB Button

⑤

⑤ Microphone

⑥

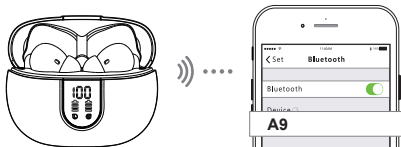
⑥ Charging Pin

If any questions are not answered in the manual, please check the product description on Amazon (FAQ at the product listing bottom), or contact our store customer service team through the Amazon platform, we will reply within 24 hours.

Pairing

Stereo mode

1. Open the charging case, the two earbuds will automatically turn on and connect to each other, waiting to connect to your phone. (no need to remove the earbuds from the charging case)
2. Turn on your phone's Bluetooth and search for "A9", then choose "A9". The earbuds will connect to your phone.



Single Earbud Mode

1. Take an earbud (left/right) out of the charging case
2. Turn on your phone's Bluetooth and select "A9".
The earbud will connect to your phone..



NOTE:

- A. After the earbuds are disconnected from the mobile phone, it will automatically enter the pairing state and shut down after 5 minutes.
- B. When there is a pairing record, just open the charging case, and the earbuds will automatically connect to the phone. (No need to remove the earbuds from the charging case)

Wear

1. Choose an ear tip with a comfortable size and replace it on the earbuds.



2. Insert the earbuds into your ear, and twist the earbuds to adjust the ear wings so that they fit firmly in the ear slot.



Power On

Auto Power On

Just open the charging case, the earbuds will power on automatically.



Manual Power On

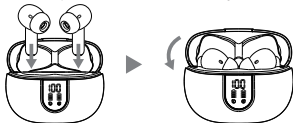
Press and hold the “MFB” button for 3s, the earbuds will power on and you will hear a voice prompt “Power On”. The indicator light flashes slowly.



Power Off

Method 1

Put the earbuds into the charging case and close the case, the earbuds will power off automatically.



Method 2

Press and hold the “MFB” button of the “Right or Left Earbud” for 5s, the earbuds will power off and you will hear a voice prompt “Power off”, The indicator light flash once.



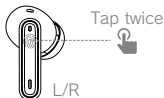
NOTE:

- A.No connected with the phone, auto power off in 5 minutes.
- B.If one side earphone power off, the other will keep power on until you put it back to the charge case or long press to power off.

Phone Calls Control

Answer/End Calls:

Tap twice the “MFB” button of “Right or Left Earbud”, you will hear a voice prompt “Incoming Call + Phone number” when a call comes in and “Call Ended” after end calls.



Reject Calls:

Press and hold the “MFB” button of “Right or Left Earbud” for 2s, you will hear a voice prompt “Call Rejected”.

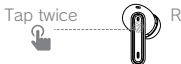


Music

Play/Pause: Tap the “MFB” button of “Right or Left Earbud”.



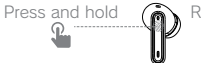
Next Track: Tap twice the “MFB” button of the “Right Earbud”.



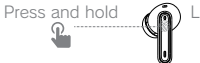
Previous Track: Tap twice the “MFB” button of the “Left Earbud”.



Volume Up: Press and hold the “MFB” button of the “Right Earbud”.



Volume Down: Press and hold “MFB” button of the “Left Earbud”.



NOTE: When the volume is set to maximum/minimum, you will hear a voice prompt “Volume Maximum” / “Volume Minimum”.

Activate "Siri"

Triple-tap the "MFB" button of "Right or Left Earbud".

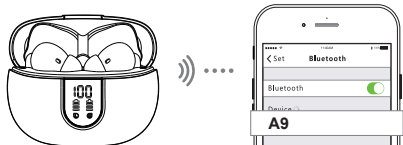
Triple tap



L/R

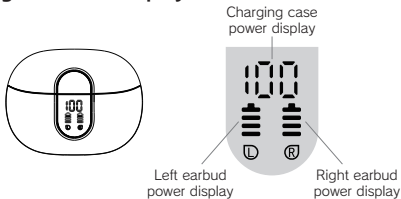
Resetting

1. In the state of power on, quickly double-tap the "Left or Right earbud" 5 times, and the earbuds will power off with the voice prompt "Power Off".
2. Delete the bluetooth pairing record "A9" of the earbuds on the mobile phone.
3. Put the earbuds back into the charging box.
4. After 10 seconds, take the earbuds out of the charging case. the right earbud flashes white slowly to wait to pair.
5. Turn on the phone's bluetooth to search "A9" and pair.



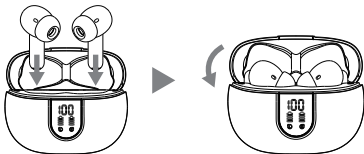
Charging

Digital Power Display



Earbuds Charging

Put the earbuds into the charging case and close the case. The earbuds light will stay blue, and light off after fully charged.

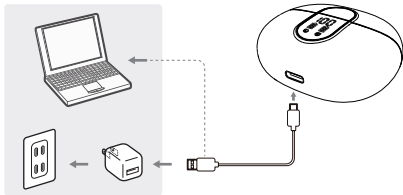


NOTE:

- A. Please take care when you put earbuds into the case. Place them in the right position and if not please adjust them lightly until achieving successful charging.
- B. Power level 10% starts to alarm, there will be a voice prompt "Battery is Low Please Charge" every 20s, and the blue light slowly flash.

Charging for the Case

Use the type-c charging cable(provided) to connect your computer(with power on) or an adapter(not provided) to your charging case. The charging case power display will be 100% after fully charged.



NOTE:

- A. Please separate the charging cable and charging case when fully charged.
- B. 5V/1A or 5V/1.5A is the best choice for charging. Improper current and voltage may damage earbuds and charging case.

Specification

Model:	A9
Operating Mode:	Touch Function
Version:	V5.3
Transmission Distance:	33 feet/10 meters (open space)
Supporting Protocols:	A2DP\AVCTP\AVDTP\ AVRCP\HFP\SPP\SMP\ATT\ GAP\GATT\RFCOMM\SDP\ L2CAP
Talk Time(Earbuds):	About 4 Hours
Music Time(Earbuds):	About 6 Hours
Earbuds Battery Capacity:	33mAh*2Pcs
Earbuds Charging Time:	About 1.5 Hour
Charging Case Battery Capacity:	320mAh
Charging Case Charging Time:	About 2 Hours

Safety Instruction

- When using while walking, pay close attention to the surrounding traffic. It may cause a traffic accident.
- Minimize the volume before use. Sudden loud noises will impair your hearing.
- To protect your ears, do not turn up the volume too much.
- If the product drop into a flammable or liquid such as water, please stop using it and contact the store where you purchased the product or us. If you still continue to use it, it may cause a fire, malfunction or electric shock.
- Opening the inside may cause a malfunction or electric shock. Do not touch the inside. In addition, we do not guarantee performance if the inside is modified by people.
- Do not charge it with wet hands or touch the charging port. It may cause electric shock.
- If you feel sick while using this product, please stop using it immediately.
- If you are using a medical device such as a pacemaker, consult your doctor before using it.
- Do not allow small children to use it.

Tips

- (1) It may cause disconnection when under low battery circumstances. In order not to affect its normal use, please charge the earbuds in time.
- (2) If the earbuds fail to turn on, please try to charge them first, and then try to turn them on again after fully charged.
- (3) If the battery is exhausted or has not been used for a long time, there may be no signal light at the beginning of charging, but it will normally light up in red after a few minutes.
- (4) Please charge the case every 30 days when you do not use the device frequently.
- (5) No sound from the earbuds.
 - Make sure the earbuds are turned on.
 - Make sure the earbuds are successfully connected to the phone.
 - Make sure that the distance between the earbuds and the phone does not exceed the effective distance of 10 meters(about 32.8 feet).
 - Make sure that the music playback output selects the right.

- Make sure that your phone is within a strong signal range and that there is no external interference.
- Check whether your phone is connected to other devices.

(6) The earbuds model cannot be searched.

- Make sure the earbuds are in a pairing state and ready to connect.
- There may be a program error between the earbuds and the phone. Please contact the seller.

(7) No sound from the earbuds.

- Make sure that the call selects A9 standby status, not the phone speaker status.
- Confirm whether your phone is connected to other devices.

(8) Earbuds disconnected.

- Make sure that the distance between the earbuds and the phone does not exceed the effective distance of 10 meters(about 32.8 feet).
- Make sure the device has enough power, low power will cause the connection to be disconnected.
- The connection may be disturbed when there are multiple 2.4GHz signals present at the same time or

when there is some obstruction between the earbuds and the device.

- When using the product in an electromagnetic field or radiation environment, the connection may be disturbed.

**THANK
YOU**

This device complies with part 15 of the FCC Rules. Operation is subject to the following two conditions: (1) This device may not cause harmful interference, and (2) this device must accept any interference received, including interference that may cause undesired operation.

Any Changes or modifications not expressly approved by the party responsible for compliance could void the user's authority to operate the equipment.

Note: This equipment has been tested and found to comply with the limits for a Class B digital device, pursuant to part 15 of the FCC Rules. These limits are designed to provide reasonable protection against harmful interference in a residential installation. This equipment generates uses and can radiate radio frequency energy and, if not installed and used in accordance with the instructions, may cause harmful interference to radio communications. However, there is no guarantee that interference will not occur in a particular installation. If this equipment does cause harmful interference to radio or television reception, which can be determined by turning the equipment off and on, the user is encouraged to try to correct the interference by one or more of the following measures:

- Reorient or relocate the receiving antenna.
- Increase the separation between the equipment and receiver.
- Connect the equipment into an outlet on a circuit different from that to which the receiver is connected.
- Consult the dealer or an experienced radio/TV technician for help.