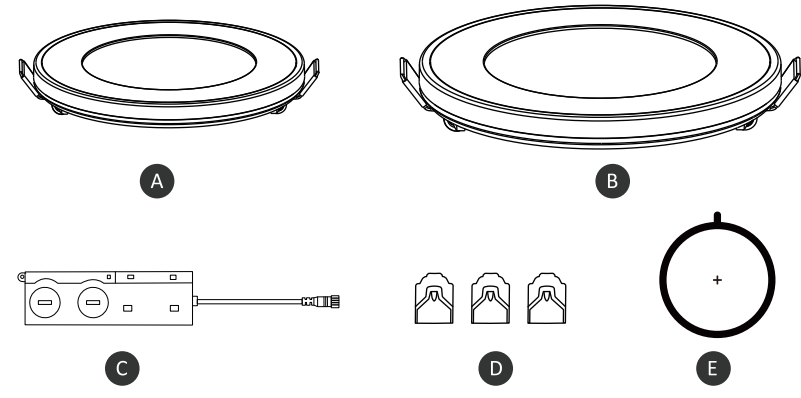


# Smart CCT Slim Panel with RGB Night Light Installation Instructions

## PACKAGE CONTENTS



## PACKAGE CONTENTS

PART	DESCRIPTION	QUANTITY	PART	DESCRIPTION	QUANTITY
A	4inch Smart CCT Slim Panel with RGB Night Light	1	B	6inch Smart CCT Slim Panel with RGB Night Light	1
C	J-Box driver	1	C	J-Box driver	1
D	Connector	3	D	Connector	3
E	Hole cutout card	1	E	Hole cutout card	1

## UNPACKING

Thoroughly inspect the fixture for freight damage. Freight damage should be reported to the delivery carrier.

## SAFETY INFORMATION

Please read carefully and save these instructions, as you may need them at a later date. When using electrical equipment, basic safety precautions should always be followed as below.

-01-

## IMPORTANT

READ ALL INSTRUCTIONS BEFORE INSTALLING FIXTURES. RETAIN FOR FUTURE REFERENCE.

### SAFETY

For your safety, this fixture must be wired in accordance to local electrical codes and ordinances. All work should be done by a qualified electrician.

### ASSEMBLY INSTRUCTIONS

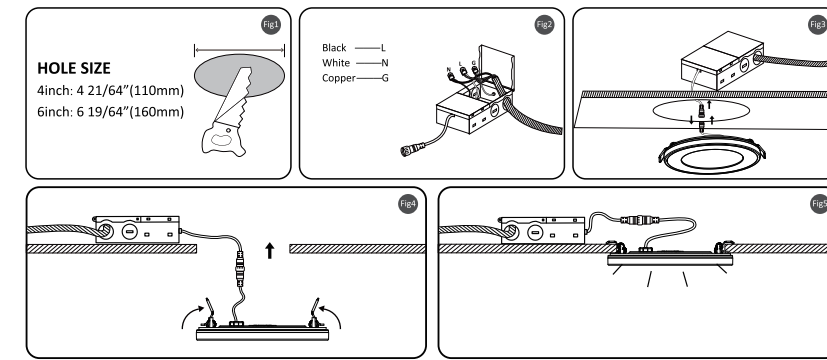
- Preparing for installation: disconnect electrical power before installing or servicing any part of this fixture.
- Locate a suitable position to plate the fixture and open in accordance to the cut-hole dimensions (refer to hole cut table for appropriate size).
- Run electrical wire from the switch (power supply) through the mounting-hole-use nmd90 romex or bx cable.

### WARNING

- Make certain power is off from the electrical panel before starting installation or attempting any maintenance. Indoor installation only.
- Risk of fire or electrical shock. Do not alter, relocate or remove wiring, junction box, power supply or any other electrical components.
- Suitable for Wet Locations.
- To prevent electrical shock, please wear rubber shoes and work gloves when installing the fixture.
- This fixture is App dimmable. App dimming range is 1-100%.

## INSTALLATION

- Turn off the power before installation. Remove the existing fixture if applicable. Determine the location and necessary hole cutout diameter using the supplied table and cut the ceiling hole with the listed approximate diameter, see Fig1.
- Open the J-Box cover and remove the appropriate knockout(s) on the side panel. Install the appropriate cable clamp(s) (not included) and insert the electrical supply cable through the cable clamp. Connect the supply wires to the fixture wires by using 3 connectors. Attach white to white, black to black, copper to the ground wire, see Fig2.
- Insert J-Box through the mounting hole and secure it, connect the fixture power cable to the J-Box. see Fig3.
- Push the spring-loaded clips into the mounting hole upwards and insert the fixture into it. Release the clips and the fixture will be pulled flush to the ceiling, see Fig4.
- Turn on the power after installation, check the fixture can work well, see Fig5.



-02-

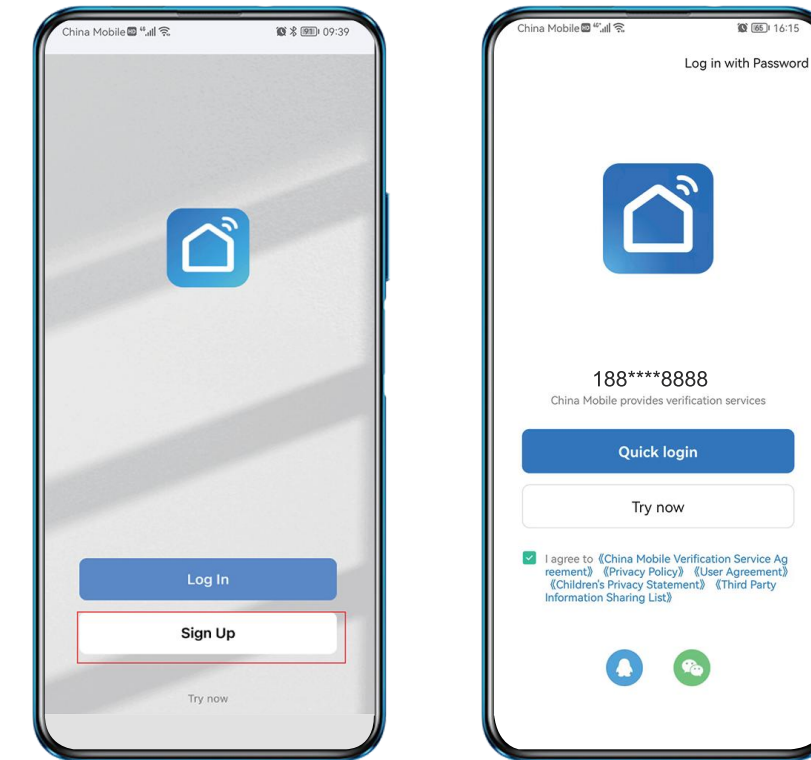
## INSTALL THE APP

Download the "Smart Life" APP to connect and enjoy intelligent control.

NOTE: Only support 2.4 GHz Wi-Fi.

- Search for Smart Life in Apple's App store and other major App stores or scan the following QR code to download the Smart Life App.
- "Sign Up" to create an account.

Sign up the APP, enter your mobile phone number or email address.  
Note: Please select your region and country.



-03-

Turn on mobile phone WiFi, bluetooth

NOTE: Only support 2.4 GHz Wi-Fi.

Switch on and off 10 times on the wall switch, enter standby mode, make sure light rapidly flashing white.

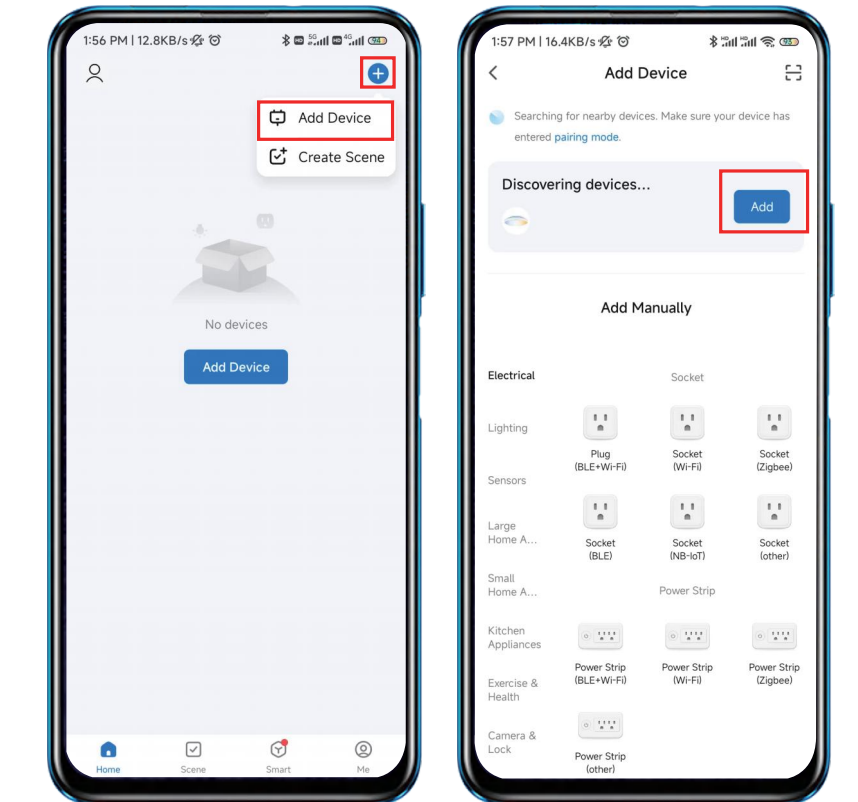
### 3.Connect devices

#### STEP1

- Open the Smart Life. In the top corner of the screen, click "+" and "Add Device".

#### STEP2

- Choose "Add".



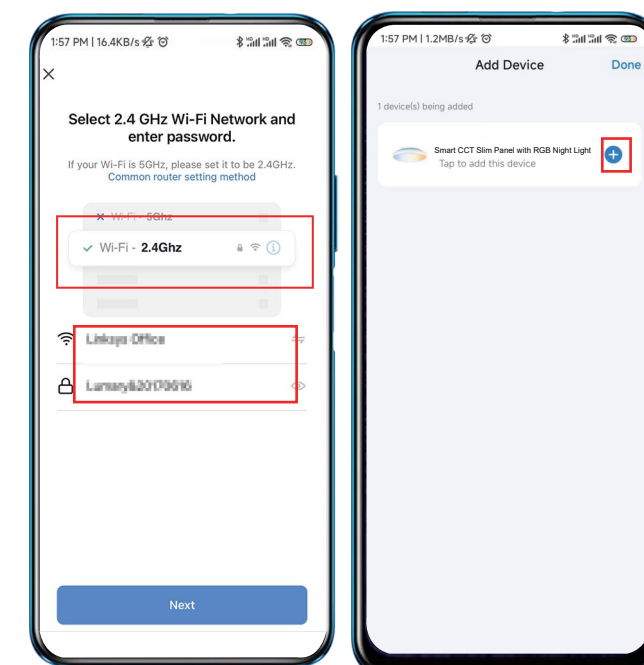
-04-

### STEP3

- Enter your WiFi network and password, press "Next" in the App.

### STEP4

- Click "+" in front of the fixture.

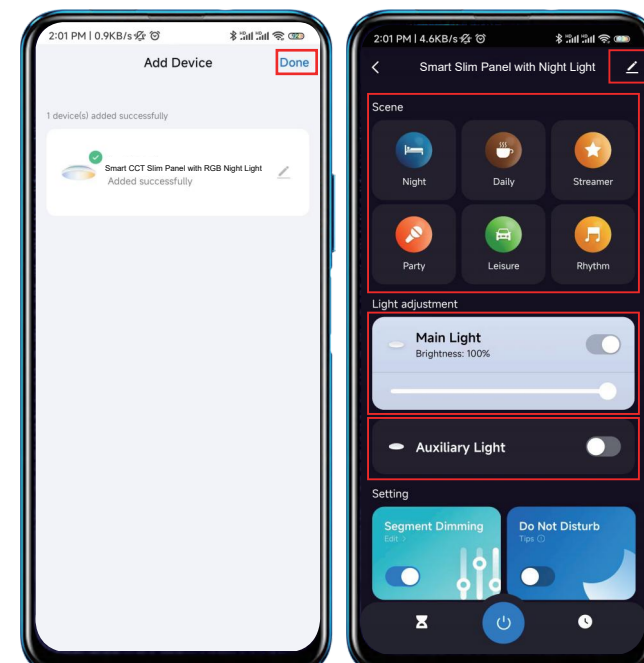


### STEP5

- "V" in front of the fixture stand for successfully connected and click done.

### STEP6

- Enter the setting status of single fixture. Optional scene mode. The main light and auxiliary light can be selected for brightness. Segment dimming and do-not-disturb mode can be setted. Click "Z" in the top right to enter the setup interface.



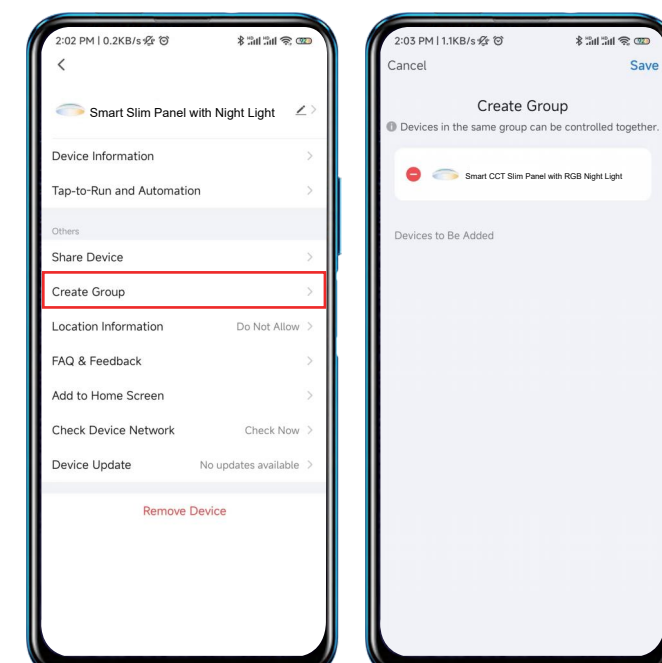
-05-

### STEP7

- Choose "Create Group"

### STEP8

- Click "+" in front of the fixture to your "Create Group" and save.

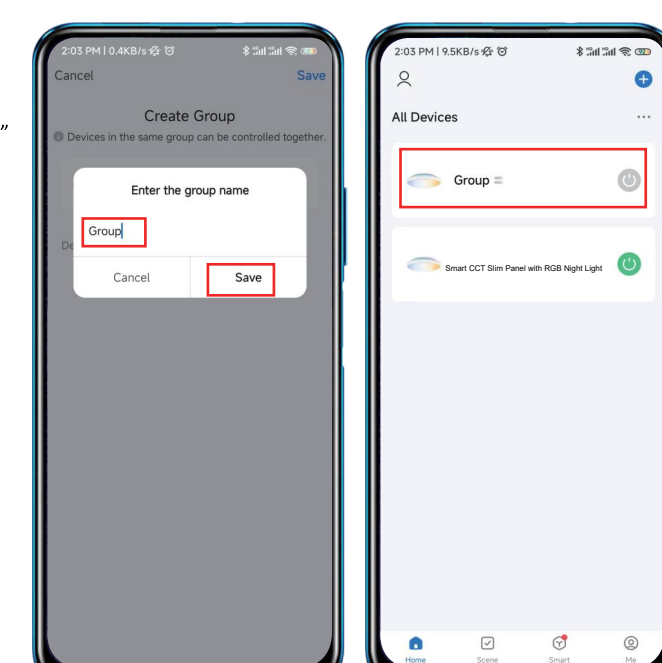


### STEP9

- Named "Create Group" and "save."

### STEP10

- Click "Group" to enter.



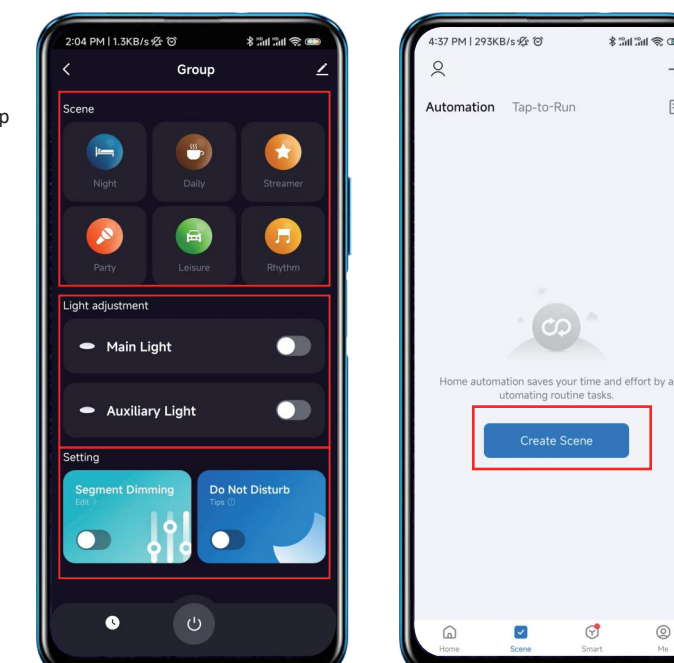
-06-

### STEP11

- Choose the scene, light adjustment and setting of group

### STEP12

- Click "Create Scene."

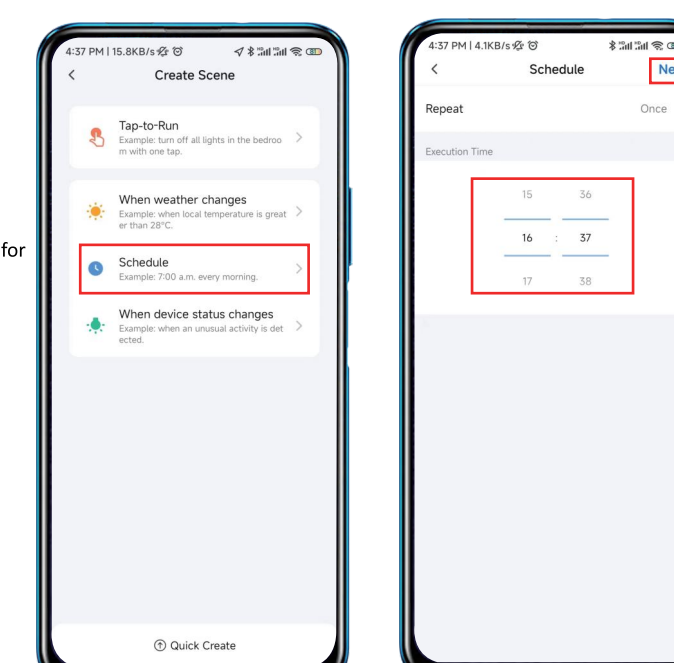


### STEP13

- Choose "Schedule", enter the timing interface.

### STEP14

- Set the ON-OFF time of fixture for your demand.



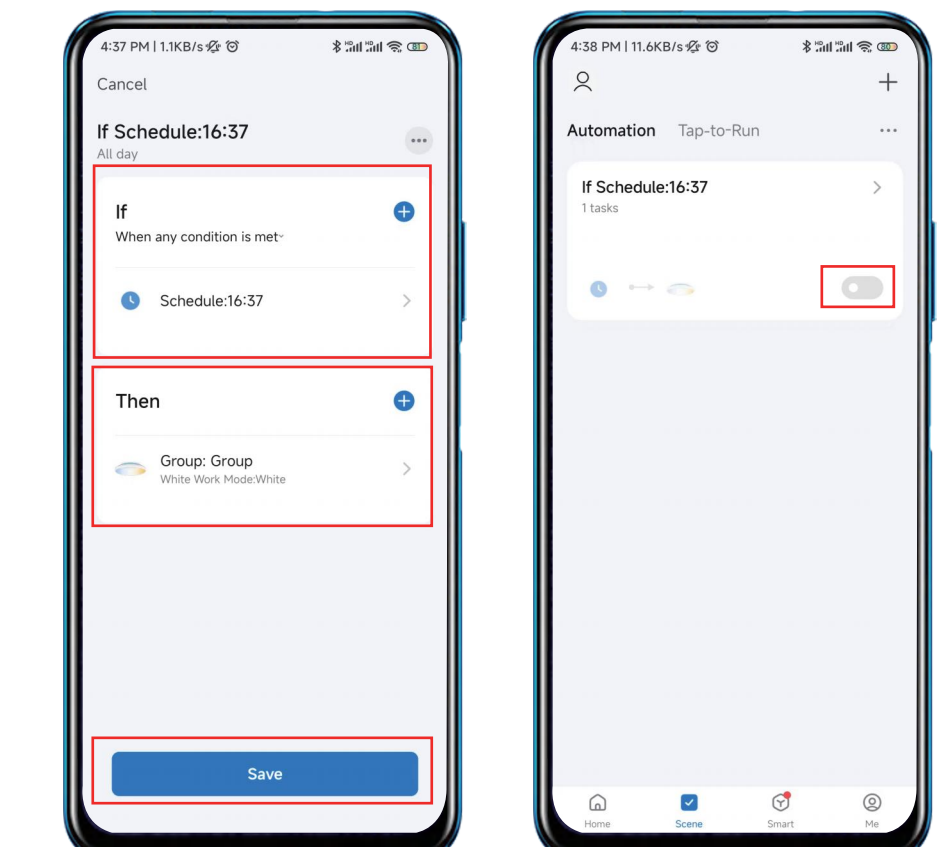
-07-

### STEP14

- Choose time and group. Click "Save"

### STEP15

- Slide switch to open or close the Automation.



### Warm Tips:

Above connection instruction based on the basic version.

It may vary if APP version update.

Please follow up the actual version guideline.

-08-

# FCC Statement

This equipment has been tested and found to comply with the limits for a Class B digital device, pursuant to part 15 of the FCC Rules. These limits are designed to provide reasonable protection against harmful interference in a residential installation. This equipment generates, uses and can radiate radio frequency energy and, if not installed and used in accordance with the instructions, may cause harmful interference to radio communications. However, there is no guarantee that interference will not occur in a particular installation. If this equipment does cause harmful interference to radio or television reception, which can be determined by turning the equipment off and on, the user is encouraged to try to correct the interference by one or more of the following measures:

- Reorient or relocate the receiving antenna.
- Increase the separation between the equipment and receiver.
- Connect the equipment into an outlet on a circuit different from that to which the receiver is connected.
- Consult the dealer or an experienced radio/TV technician for help.

Caution: Any changes or modifications to this device not explicitly approved by manufacturer could void your authority to operate this equipment.

This device complies with part 15 of the FCC Rules. Operation is subject to the following two conditions: (1) This device may not cause harmful interference, and (2) this device must accept any interference received, including interference that may cause undesired operation.

## RF Exposure Information

This equipment complies with FCC radiation exposure limits set forth for an uncontrolled environment. This equipment should be installed and operated with minimum distance 20cm between the radiator and your body.