

**Trend**

# SIGHT I

WiFi Smart

Distributed by Trend Makers, LL  
©2023 Trend  
Made i  
All Rights

SGTBLB\_IB\_ENG\_V1\_221228

**Trend Makers™**

# SIGHT BULB™

WiFi Smart Camera



## Setting-Up Your SIGHT BULB

### ***4 Simple Steps to Set-Up and Protect***



Download  
the  
Sight Bulb™ App



Install Sight Bulb™  
into a light  
fixture socket



Connect your  
Sight Bulb™  
to the App



Use your  
Sight Bulb™  
camera lens to  
scan the mobile  
QR Code

**NOTE:** To ensure proper use of your Sight Bulb™, please follow the instructions detailed in this set-up guide.

## Setting-Up Your SIGHT BULB

This device complies with Part 15 of the FCC Rules. Operation is subject to the following two conditions:

- (1) this device may not cause harmful interference, and
- (2) this device must accept any interference received, including interference that may cause undesired operation.

**FCC RF Radiation Exposure Statement Caution:**

To maintain compliance with the FCC's RF exposure guidelines, place the product at least 20cm from nearby persons.

FCC ID: 2A88H-0033052276

## Setting-Up Your SIGHT BULB

**Warning:** Changes or modifications to this unit not expressly approved by the party responsible for compliance could void the user's authority to operate the equipment.

**NOTE:** This equipment has been tested and found to comply with the limits for a Class B digital device, pursuant to Part 15 of the FCC Rules. These limits are designed to provide reasonable protection against harmful interference in a residential installation. This equipment generates, uses and can radiate radio frequency energy and, if not installed and used in accordance with the instructions, may cause harmful interference to radio communications.

However, there is no guarantee that interference will not occur in a particular installation. If this equipment does cause harmful interference to radio or television reception, which can be determined by turning the equipment off and on, the user is encouraged to try to correct the interference by one or more of the following measures:

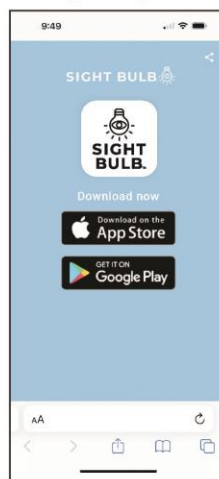
- Reorient or relocate the receiving antenna.
- Increase the separation between the equipment and receiver.
- Connect the equipment into an outlet on a circuit different from that to which the receiver is connected.
- Consult the dealer or an experienced radio/TV technician for help.

## Setting-Up Your SIGHT BULB

### Step 1: Download the Sight Bulb App

1. Download the **Sight Bulb** app in the Apple® App Store, Google® Play Store, or use your phone camera to scan the QR code below to open the app store of your mobile phone.

**Apple® App Store or  
Google® Play Store**



**Scan Code**



## Setting-Up Your SIGHT BULB

### Step 1: Download the Sight Bulb App

2. Create your account and select **Continue**.
3. Follow the App prompts to set up your password and register your Sight Bulb. Then **Log In** to your Sight Bulb App.

**Passwords must contain numbers and letters, be no less than six digits, and cannot contain special characters.**



4

## Setting-Up Your SIGHT BULB

The incredible WiFi smart camera, that installs like a light bulb, includes many advanced features:

- Robotic 360° omni-directional 1080p HD video
- Monitor and connect to up to 5 cameras
- Action tracking technology
- Infrared night vision
- Alarm to scare away intruders or animals
- Remotely rotate and view from any smartphone
- Create custom motion alerts
- Indoor and outdoor surveillance
- The camera has a memory card slot (memory card not included)
- No Batteries Required, camera works off your bulb outlet.
- Operating temperature range: -20°C - 45°C



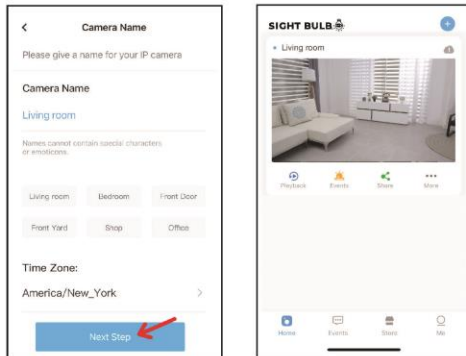
For instructional videos and FAQ's please visit [trendmakerscares.com](http://trendmakerscares.com) to learn more.

9

## Setting-Up Your SIGHT BULB

### Step 4: Use Your Sight Bulb Camera Lens to Scan the Mobile QR Code

5. Enter a name for your camera or select a name from the options provided. Then press **Next Step** on your mobile phone.
6. Now, you are ready to start using your Sight Bulb!



8

## Setting-Up Your SIGHT BULB

### Step 2: Install Sight Bulb into a Light Fixture Socket

1. Find the Sight Bulb reset pin and set it aside. You will need this pin for Step 3.
2. Turn off the light switch to the light socket you will use.
3. Install Sight Bulb by twisting it into the light bulb socket, similar to any light bulb.
4. Turn the light on for the light socket. Your Sight Bulb indicator light will flash.
5. Wait 30 seconds for the camera to go through its set-up mode. When the set-up mode is complete, you will hear the "Welcome to use" command.

Reset pin



Install Sight Bulb into a light fixture socket

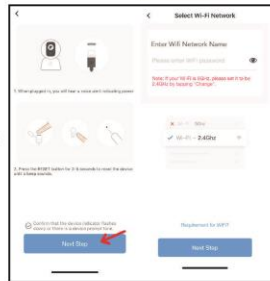
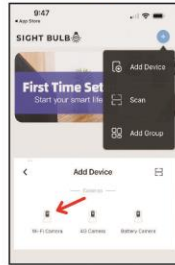


5

## Setting-Up Your SIGHT BULB

### Step 3: Connect Your Sight Bulb to the App

1. Press the **+** sign in the App and then select **Add Device**.
2. Select **WiFi Camera** from the device options.
3. Next choose **Pair by QR Code**.
4. Use the **reset pin** to press the **reset button** on the bottom of your Sight Bulb for about 5 seconds until you hear a "ding" sound. Then release the reset pin.
5. Confirm that your Sight Bulb device indicator flashes or that you hear a tone sound. Then press **Next Step** in the App.
6. Select or enter your location's WiFi name, enter the WiFi password, and press **Next Step**.



6

## Setting-Up Your SIGHT BULB

### Step 4: Use Your Sight Bulb Camera Lens to Scan the Mobile QR Code

1. You will find your QR Code in the Sight Bulb mobile App.
2. Hold your phone with the QR code displayed directly in front of the Sight Bulb Camera lens until you hear a musical prompt. **Tip:** Hold your mobile 4-8 inches away from the lens for best results.
3. Click the **I Heard a Prompt** button
4. The App will countdown until your Sight Bulb camera and mobile device are connected to your WiFi network.



7