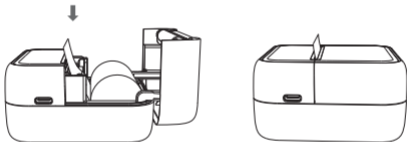




# Quick start guide

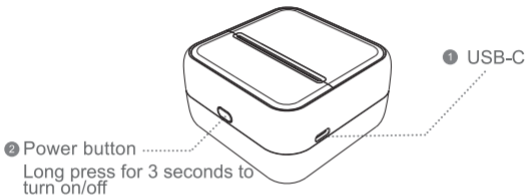
## First time using

Please open the paper compartment cover and put the printing paper on top of the printer. After closing the paper compartment cover, the printing paper will expose a short section of the printer, as shown in the figure:



⚠ Only one side of the printing paper can be printed. Please place the printing paper in the correct direction.

## Product introduction



## Power indicator status

Steady green light: power on/standby/charge completed

Red light is always on: charging/out of paper/overheating/opening the cover

Flashing red: low battery will cause light printing effect, please charge in time.

# App download and settings

## Mobile Download

Search "**Luck Jingle**" in the App Store



iOS



Android

## Settings

Double-click the power button, the printer will print out the QR code of the bound device; add a device through the App, scan and scan the QR code to connect to the printer (Note: Do not search for Bluetooth printer connection in the Bluetooth settings of the mobile phone)

In the startup state, click the power button six times to calibrate the label.

## Replacement of consumables



- 1 Open the cover: see the direction of the arrow as shown in the figure, and pull the paper compartment cover up to open the cover
- 2 Consumables: as the arrow shown, put the heat sensitive surface of the paper on the same side as the thermal print head

## Safety and precautions

- 1 There is a built-in lithium battery, please do not use it in the environment with temperature higher than 40 °C ; keep away from fire and other heat sources, and do not place it in the hot sun, such as closed car;
- 2 Children should be charged and used under the supervision of adults. After full charge, please make sure to pull out the charging line in time to prevent overheating, short circuit or fire;
- 3 Do not put the product in fire or water to avoid battery short circuit or fire or burn;
- 4 The operating temperature range is 0 °C to 40 °C , please do not exceed the recommended temperature range.

 Please avoid direct contact with the print head to avoid damage, especially after printing, do not directly touch the print head immediately to prevent overheating.

# Troubleshooting guide

## ❶ Without any print content on the paper when printing

Check the paper is loaded in right direction;

If not, print the self-test page and check;

If the self-test page cannot be printed, the printer is malfunctioning;

If the self-check page is correct, check the paper or App.

## ❷ Print blurry

Check the default print density for the best print results;

Check if there are horizontal lines or only part of the content can be printed;

Check to see if the print head is blocked and clean with alcohol;

If the print quality is not good, please use the original paper series.

## ❸ A paper shortage error message is displayed

Check that the printer is out of paper;

If not, make sure the cover is locked correctly (loose pages may cause the printout to shift or Paper test failed).

## ❹ Printing stops unexpectedly

In order to ensure the reliability of the printer, multiple protection instructions are designed;

The printer will stop working due to lack of paper, data errors, excessive temperature, or low battery power;

Follow the prompts on the application to analyze the problem.

## Warnings

- This product does not include a power adapter as standard. If you use a power adapter for charging, you should purchase a 5V/1A power adapter that has obtained CCC certification and meets the standard.
- This product is a professional product please use the original type of battery, if you replace the original type of battery or use the wrong type of battery, there will be explosion risk, be sure to follow the instructions to dispose of the used battery.



## FCC Caution

This device complies with part 15 of the FCC Rules. Operation is subject to the following two conditions: (1) This device may not cause harmful interference, and (2) this device must accept any interference received, including interference that may cause undesired operation. Any changes or modifications not expressly approved by the party responsible for compliance could void the user's authority to operate the equipment.

NOTE: This equipment has been tested and found to comply with the limits for a Class B digital device, pursuant to Part 15 of the FCC Rules. These limits are designed to provide reasonable protection against harmful interference in a residential installation. This equipment generates, uses and can radiate radio frequency energy and, if not installed and used in accordance with the instructions, may cause harmful interference to radio communications. However, there is no guarantee that interference will not occur in a particular installation. If this equipment does cause harmful interference to radio or television reception, which can be determined by turning the equipment off and on, the user is encouraged to try to correct the interference by one or more of the following measures:

- Reorient or relocate the receiving antenna.
  - Increase the separation between the equipment and receiver.
  - Connect the equipment into an outlet on a circuit different from that to which the receiver is connected.
  - Consult the dealer or an experienced radio/TV technician for help.
- The device has been evaluated to meet general RF exposure requirement. The device can be used in portable exposure condition without restriction.



Model:	S1
Size:	83x83x44 mm
Weight:	150g
Input:	5V $\overline{=}$ 1A
Connector:	USB - C
Battery capacity:	1200mAh(3.7V)
Consumable items:	57x30 mm
Print:	Temperature-sensitive

**[www.luckjingle.com](http://www.luckjingle.com)**

**Made in China**