

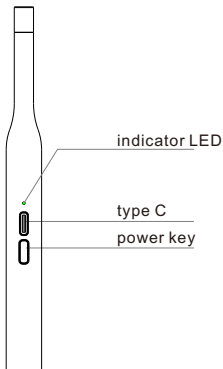


Smart Ear Cleaner

User Guild

Usage Method

I .Product diagram



On: Press the power key for 3 seconds and the light will be on
Off: Press the power key for 3 seconds and the light goes out
The green light is on when charging, and the automatic power-off light is off when full

II.Download the app before use

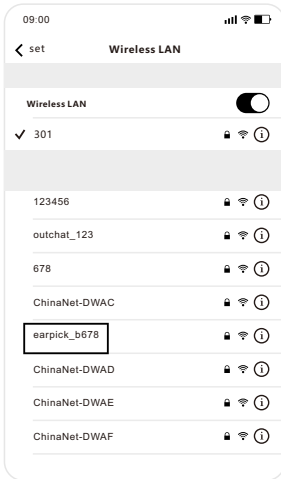
01.Ios version QR code



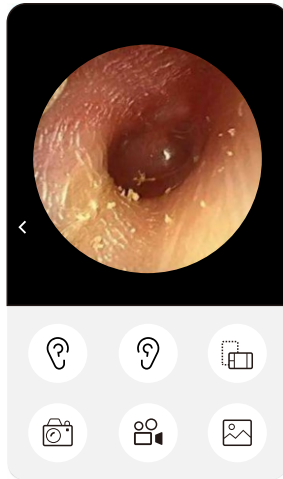
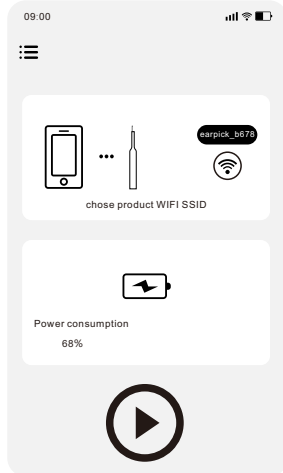
02.Android version QR code (If you can't scan, please scan with your browser)



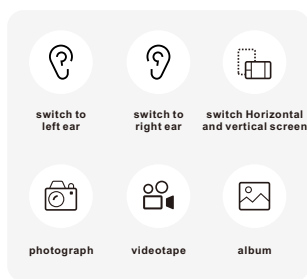
III.After downloading the app, press power key until the light is on, and turn it on Mobile wifi list, find the hotspot named "earpick_xxx" (xxx)Is a random number), click Connect and then enter the app



IV.Connect the hotspot, open the app to display the hotspot name and power, and click the start button to enter the use interface



operating instructions



the left and right ears can be switched, and the horizontal and vertical screens can be switched according to personal preferences. photos or videos can be taken, and images can be viewed in the album

warranty

1.supports 7-day return, 15 day replacement and one-year warranty

2. As the product belongs to personal care series, it does not affect the secondary sales and the accessories If it is clean without loss or damage, you can apply with the seller for refund for 7 days without reason exchange goods

3. If the product has quality problems within 15 days, you can contact the seller for replacement, and the product will be replaced within one year If you have any problems, you can contact the seller for warranty

Common problems

I .Abnormal product connection

1. The WiFi of the product cannot be found

Confirm whether the product is on . When the white light is on, it means that it has been started.Otherwise, confirms the product hotspot name correct and connected

2. When connecting to the product WiFi, the network refuses to join

Confirm whether the mobile phone has the WiFi permission to open the app and whether there is other mobile phone is connected to the WiFi of the product

3. After the product WiFi is connected, the app still shows that it is not connected

Confirm whether the app is downloaded correctly and whether the power and hotspot names are displayed in the app. If not, you need to wait for a while before opening it

II.The product body is heated during use

The product adopts a dual temperature control system During using, the noninductive temperature of the otoscope part is 25 ° , and the temperature of the body part is 32 ° .Slight overheated occurs during usingthe product, which is a normal phenomenon and can be used safely

III.Abnormal display during app use

If a blank screen appears during the use of the product, or the lens is blurred and the screen is not clear. for such phenomena

as clarity, you can uninstall the app and reinstall it, wipe the product lens with alcohol, and confirm whether the hot spot of the product is correct when connecting

Parameter

Model:E-one

Weight:40g

Size:141.5*13.8*13.8mm

Antenna:Built in

Network standard:

IEEE802.11b/g/n

Frequency:2.4Ghz

Frame rate:20fps

Image sensor:CMOS

Temperature:-10-50

Capacity:120mAh

Endurance:60min

Charging time:30min

Input:5V===1A

IO:Type C

Focal distance:18mm

Pixels:30W

Gyroscope:3 axis

Color:white/blue

FCC Statement

This device complies with part 15 of the FCC rules. Operation is subject to the following two conditions: (1) this device may not cause harmful interference, and (2) this device must accept any interference received, including interference that may cause undesired operation.

Changes or modifications not expressly approved by the party responsible for compliance could void the user's authority to operate the equipment.

NOTE: This equipment has been tested and found to comply with the limits for a Class B digital device, pursuant to part 15 of the FCC Rules. These limits are designed to provide reasonable protection against harmful interference in a residential installation. This equipment generates uses and can radiate radio frequency energy and, if not installed and used in accordance with the instructions, may cause harmful interference to radio communications. However, there is no guarantee that interference will not occur in a particular installation. If this equipment does cause harmful interference to radio or television reception, which can be determined by turning the equipment off and on, the user is encouraged to try to correct the interference by one or more of the following measures:

- Reorient or relocate the receiving antenna.
- Increase the separation between the equipment and receiver.
- Connect the equipment into an outlet on a circuit different from that to which the receiver is connected.
- Consult the dealer or an experienced radio/TV technician for help.

The device has been evaluated to meet general RF exposure requirement. The device can be used in portable exposure condition without restriction.