

•Be sure to use certified QC 3.0 18W or PD 20 W adapter

IMPORTANT SAFETY INSTRUCTIONS

- Do not store device in high-temperature environment, including the heat caused by intense sunlight or others. Do not place device in fire or other excessively hot environments. Exposure to fire or temperature above 212°F(100 °C) may cause explosion.
- Do not use the wireless charger in excess of its output rating. Overloading outputs above rating may result in a risk of fire or injury to persons.
- Do not expose the wireless charger to rain or snow.
- Do not modify, repair or disassemble the unity, if needed, please contact the manufacturer.
- Switch off the wireless charger when not in use. The wireless chargers will automatically switch off when disconnected from its wall charger.**

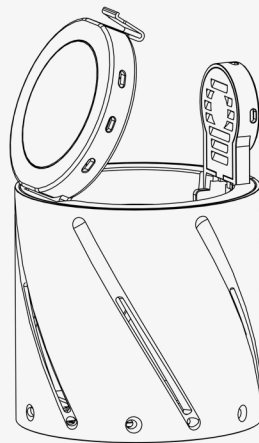
Applicable Devices:

1. Smart Phone
- iPhone 12 Mini / 12 / 12 Pro / 12 Pro Max ect.
2. Headphone
- TWS headphones compatible with wireless charger
3. Smart Watch
- Apple Watch

Please Note:

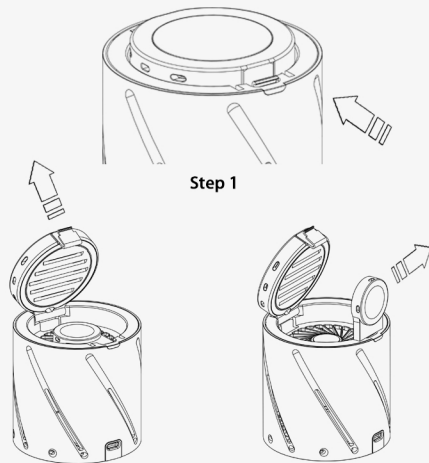
1. The Watch Wireless Charging Area only supports Apple Watch.
2. Please remove your phone case before charging if the thickness > 6.0 mm, or if the phone case will make your phone size longer than 164 mm.
3. Please use certified QC 3.0 Fast Charging Wall Adapter or PD 20W Charger to charge, do not plug into computer USB port or any other non certified USB port. We are not responsible for malfunction due to unsupported adapter use.

4. The charging adapter is required when charging 2 devices simultaneously or want to have a fast charging effect to
5. Place your Qi-enabled device accurately in the wireless charging area while charging.
6. Make sure to disconnect the device from power while cleaning.
7. **If your device can't be fully charged, it may due to high environmental temperature, please recharge after the temperature is lower. Our charger has temperature control to guard the safety of your device while charging.**
8. Make sure your device supports the Qi wireless charging function before using this wireless charger.
9. Check whether you use the QC 3.0 adapter or PD 20W **charger to power our wireless charger.**



3C Accessories Specialist

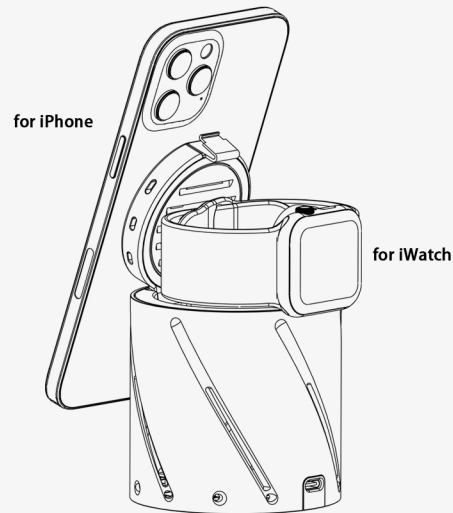
01



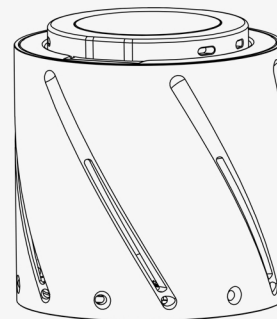
Step 2

Step 3

02



User Manual



Please read the user manual carefully before using this unit

FCC WARNING

This device complies with part 15 of the FCC Rules. Operation is subject to the following two conditions: (1) this device may not cause harmful interference, and (2) this device must accept any interference received, including interference that may cause undesired operation.

Any changes or modifications not expressly approved by the party responsible for compliance could void the user's authority to operate the equipment.

NOTE: This equipment has been tested and found to comply with the limits for a Class B digital device, pursuant to Part 15 of the FCC Rules. These limits are designed to provide reasonable protection against harmful interference in a residential installation. This equipment generates, uses and can radiate radio frequency energy and, if not installed and used in accordance with the instructions, may cause harmful interference to radio communications. However, there is no guarantee that interference will not occur in a particular installation. If this equipment does cause harmful interference to radio or television reception, which can be determined by turning the equipment off and on, the user is encouraged to try to correct the interference by one or more of the following measures:

- Reorient or relocate the receiving antenna.
- Increase the separation between the equipment and receiver.
- Connect the equipment into an outlet on a circuit different from that to which the receiver is connected.
- Consult the dealer or an experienced radio/TV technician for help.

RF warning for WPT device:

The equipment complies with FCC radiation exposure limits set forth for an uncontrolled environment. During the operation of device a distance of 15cm surrounding the device and 20 cm above the top surface of the device must be respected.