

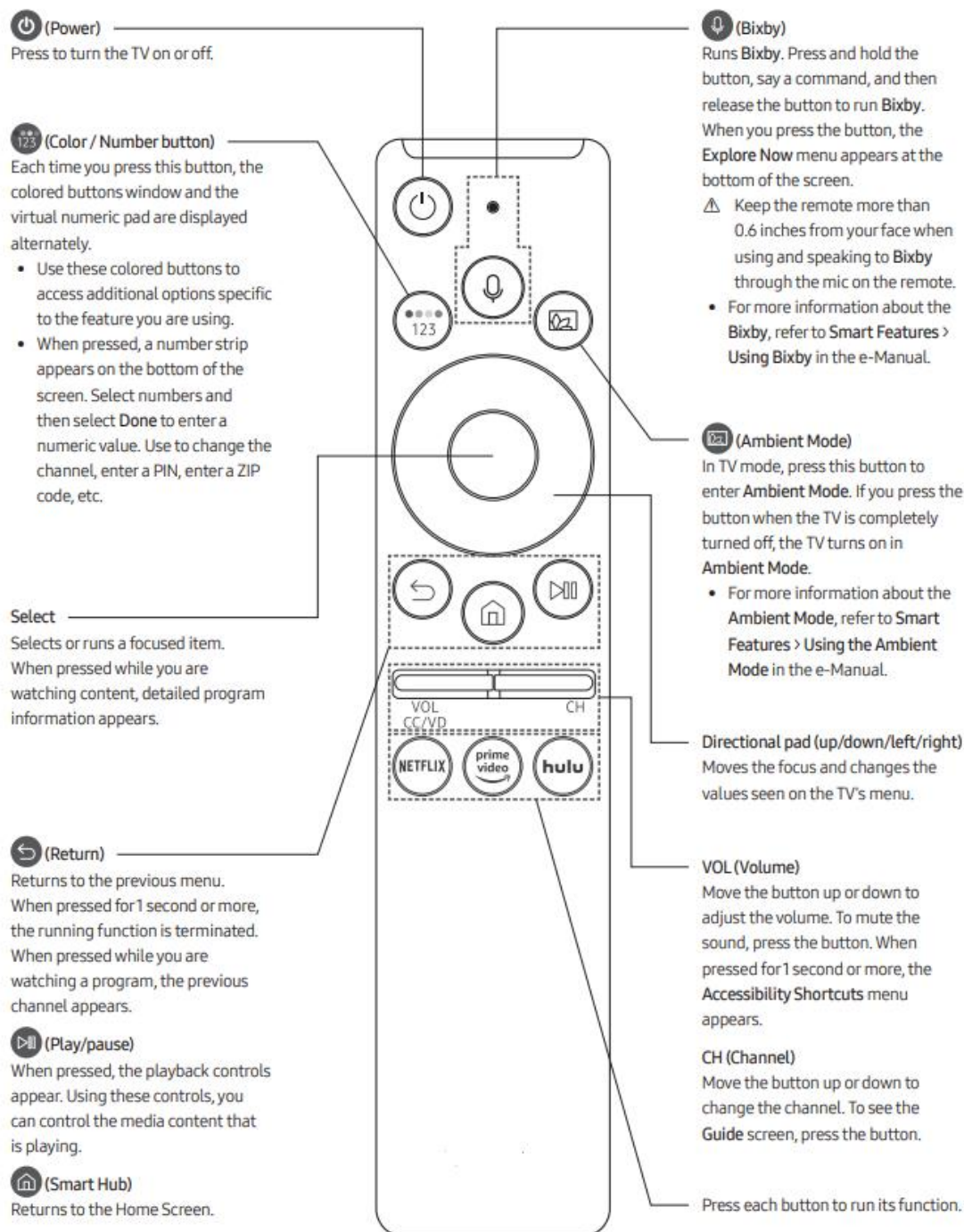
# **User manual**

Voice Remote Control

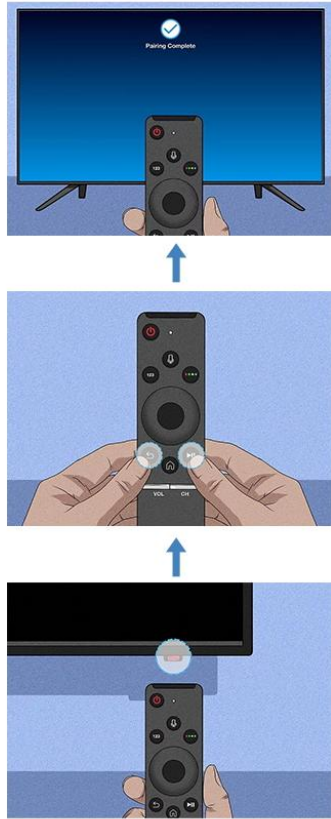
M/N:01329A

# REMOTE FUNCTIONS

- The images, buttons and functions of the Smart Remote may vary by model.



## Pairing Instructions



Warm Reminder: Without pairing, your remote might work directly, but the response will be slower, so we recommend pairing it before use.

How to pair up your Samsung smart TV with the replacement smart remote:

### 1 Insert batteries and turn on your TV

After opening the back side of the remote, insert two new AA batteries into the space. This will power the remote.

### 2 Point the remote at your TV

On most Samsung TVs, the remote control sensor is located on the lower right side of the screen or centered at the bottom.

### 3 Press the Return and Extra buttons simultaneously

Locate both the buttons on the TV remote and hold them simultaneously for 4-7 seconds. Pairing information will pop up at the lower left portion of the screen. If the pairing is unsuccessful, then go forward with manual operations.

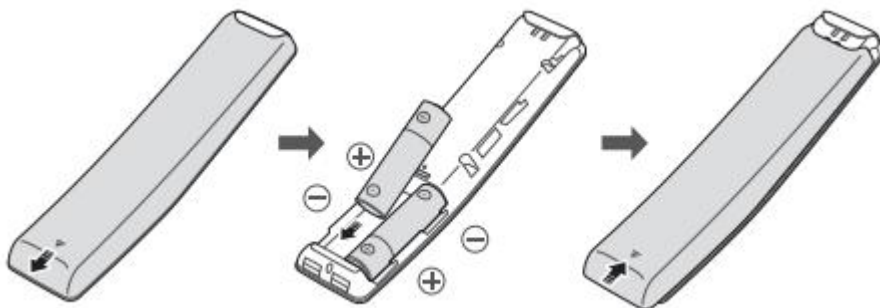
### 4 Wait for pairing to finish

Wait for the pairing procedure to end. This might take some time. When the remote is paired, it will be displayed on the screen.

## REPLACE THE REMOTE BATTERY

To install the batteries, push the rear cover open in the direction of the arrow at the bottom of the illustration, and then insert the batteries as shown in the figure. Make sure that the positive and negative ends are facing in the correct direction. Close the rear cover as shown.

NOTE: Please purchase two new AA batteries by yourself. Alkaline batteries are recommended for longer battery life.





## FCC Statement

This device complies with Part 15 of the FCC rules. Operation is subject to the following two conditions: 1) this device may not cause harmful interference, and 2) this device must accept any interference received, including interference that may cause undesired operation.

Note: This equipment has been tested and found to comply with the limits for a Class B digital device, pursuant to part 15 of the FCC Rules. These limits are designed to provide reasonable protection against harmful interference in a residential installation.

This equipment generates uses and can radiate radio frequency energy and, if not installed and used in accordance with the instructions, may cause harmful interference to radio communications. However, there is no guarantee that interference will not occur in particular installation. If this equipment does cause harmful interference to radio or television reception, which can be determined by turning the equipment off and on, the user is encouraged to try to correct the interference by one or more of the following measures:

- Reorient or relocate the receiving antenna.
- Increase the separation between the equipment and receiver.
- Connect the equipment into an outlet on a circuit different from that to which the receiver is connected.
- Consult the dealer or an experienced radio/TV technician for help.

Changes or modifications not expressly approved by the party responsible for compliance could void the user's authority to operate the equipment.

## FCC RF Radiation Exposure Statement

The device has been evaluated to meet general RF exposure requirement. The device can be used in portable exposure condition without restriction.