

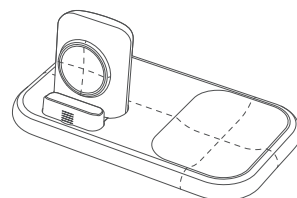
DUAL WIRELESS CHARGER

Model NO. :HS-ST24-Black

- 1 Highest internal frequency: 350kHz
- 2 Input: DC 5V2A
- 3 Output: DC 5V1A

Part List

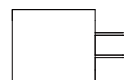
Note: If parts in the packing box don't check with the list, please contact us in time.



Charging Stand * 1

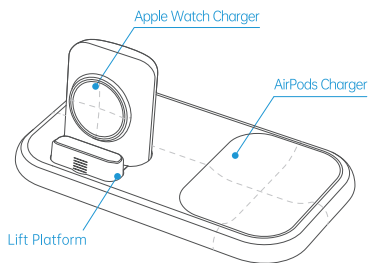


USB Cable * 1

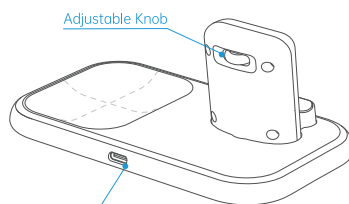


Wall Charger * 1

Model	Charger Included
ST-24	✗
ST-24D	✓



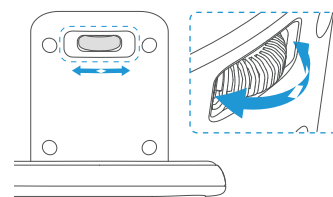
Lift Platform



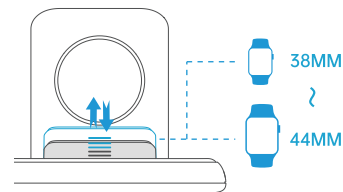
USB-C Connector

Adjust The Height to Adapter iWatch Series

- 1 Rotate the Knob

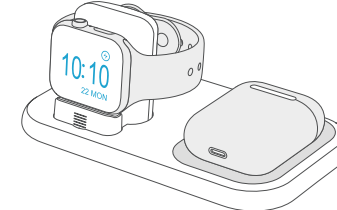


- 2 Choose an Appropriate Height

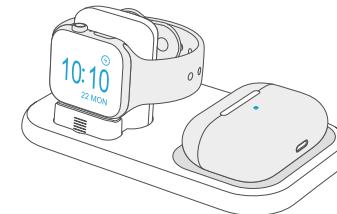


Only for AirPods Pro and AirPods Wireless Charging Case

- 1 Charging AirPods Wireless Charging Case

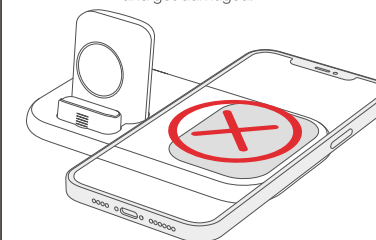


- 2 Charging AirPods Pro



Do Not Place Your Phone Here!

Otherwise your phone will overheat and get damaged.



Note for the Watch Part

- 1 Please align your Apple Watch to the charging center, the charging stand for Apple Watch has an adjustable base, you can rotate back's knob.
- 2 Rotate the knob on the back to get an appropriate height for your Apple Watch series se, 6, 5, 4, 3, 2, 1 to align the charging center, if not charging, please check this step, find appropriate place to align the charging center.

物料号: ST-24说明书V2.0

FCC Statement

This equipment has been tested and found to comply with the limits for a Class B digital device, pursuant to part 15 of the FCC rules. These limits are designed to provide reasonable protection against harmful interference in a residential installation. This equipment generates, uses and can radiate radio frequency energy and, if not installed and used in accordance with the instructions, may cause harmful interference to radio communications. However, there is no guarantee that interference will not occur in a particular installation. If this equipment does cause harmful interference to radio or television reception, which can be determined by turning the equipment off and on, the user is encouraged to try to correct the interference by one or more of the following measures:

- Reorient or relocate the receiving antenna.
- Increase the separation between the equipment and receiver.
- Connect the equipment into an outlet on a circuit different from that to which the receiver is connected.
- Consult the dealer or an experienced radio/TV technician for help.

To assure continued compliance, any changes or modifications not expressly approved by the party.

Responsible for compliance could void the user's authority to operate this equipment. (Example- use only shielded interface cables when connecting to computer or peripheral devices).

This equipment complies with Part 15 of the FCC Rules. Operation is subject to the following two conditions:

- (1) This device may not cause harmful interference, and
- (2) This device must accept any interference received, including interference that may cause undesired operation.

FCC Radiation Exposure Statement:

The equipment complies with FCC Radiation exposure limits set forth for uncontrolled environment. This equipment should be installed and operated with minimum distance 20cm between the radiator and your body.

.