

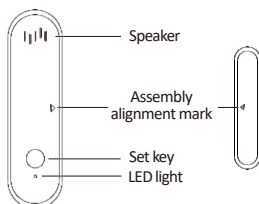


Wi-Fi Door Window Sensor With Sound User Manual

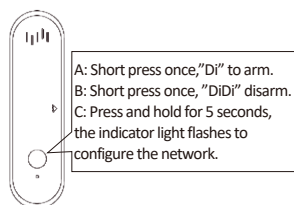


* Please read this manual carefully before use and keep it for future reference.

Product Introduction



Function Key Introduction



Specifications:

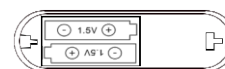
Battery type: Alkaline battery (2* 1.5V AAA battery)
Standby current: $\leq 180\mu A$
Alarm current: $\leq 70mA$
Sound level: 80dB(within 1m)
Working distance: $\geq 15mm$
Support arm/ disarm
With Low Battery remind function
Working temperature: -10 55
Working humidity: 10% 90%RH
Wi-Fi: IEEE 802.11 b/g/n 2.4GHz

How to use:

1. Push the mounting bracket upward and take out the battery, then insert the battery.



2. Put the battery into the battery bin and place it according to the graphics in the battery bin. After two batteries are loaded, the indicator lights are always on and then off.

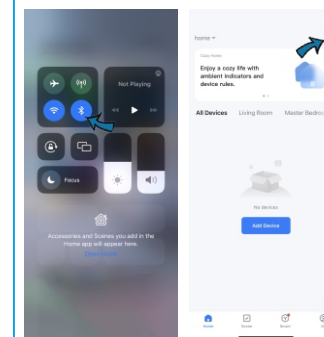


3. Download Smart Life APP in app store or google play store, or scan the following QR code

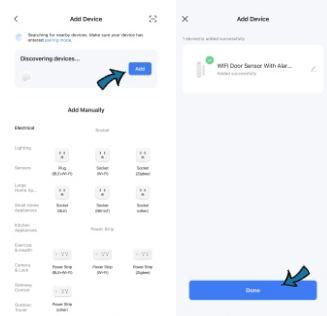


iOS / Android

4. First turn on the bluetooth in mobile phone → open smart life app and choose "+" → hold the set key for more than 5 seconds, and the indicator flashes.

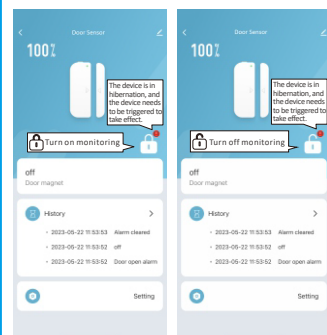


5. Then will see "Discovering devices" on mobile app. Finally press "Go to add", Enter the correct password, it will connect the Wi-Fi network automatically.

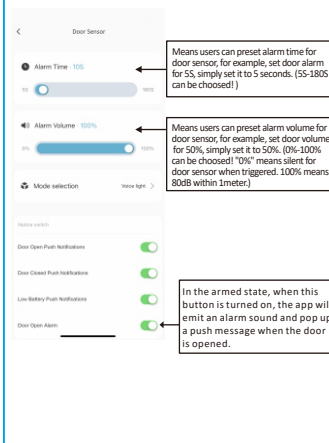


6. Network connection successfully, And the APP will remind "open" or "closed" when door magnetic is "open" or "closed".

- ① Arm (turn on monitoring).
- ② Disarm (turn off monitoring).



7. Function Introduction.



8. Share devices
You can share your added devices with your family members, so they can also monitor the ambient environment.

9. Intelligent Linkage
When open the door, can link to turn on the Tuya smart light; When close the door, can link to turn off the Tuya smart light.

10. Third-party Voice Control
Works with amazon alexa, google assistant.

11. Battery Life
The more triggered door sensor, the shorter life of battery (The battery life will be related to the triggered times of sensor.)

- FCC Statement
- This equipment has been tested and found to comply with the limits for a Class
- B digital device, pursuant to part 15 of the FCC rules. These limits are
- designed to provide reasonable protection against harmful interference in a
- residential installation. This equipment generates, uses and can radiate radio
- frequency energy and, if not installed and used in accordance with the
- instructions, may cause harmful interference to radio communications.
- However, there is no guarantee that interference will not occur in a particular
- installation. If this equipment does cause harmful interference to radio or
- television reception, which can be determined by turning the equipment off and
- on, the user is encouraged to try to correct the interference by one or more of
- the following measures:
- -Reorient or relocate the receiving antenna.
- -Increase the separation between the equipment and receiver.
- -Connect the equipment into an outlet on a circuit different from that to which
- the receiver is connected.
-

-Consult the dealer or an experienced radio/TV technician for help.
To assure continued compliance, any changes or modifications not expressly approved by the party.
Responsible for compliance could void the user's authority to operate this equipment. (Example- use only shielded interface cables when connecting to computer or peripheral devices).
This equipment complies with Part 15 of the FCC Rules. Operation is subject to the following two conditions:
(1) This device may not cause harmful interference, and
(2) This device must accept any interference received, including interference that may cause undesired operation.
FCC Radiation Exposure Statement:
The equipment complies with FCC Radiation exposure limits set forth for uncontrolled environment. This equipment should be installed and operated with minimum distance 20cm between the radiator and your body.