



SMD CORAMIC ANTENNA

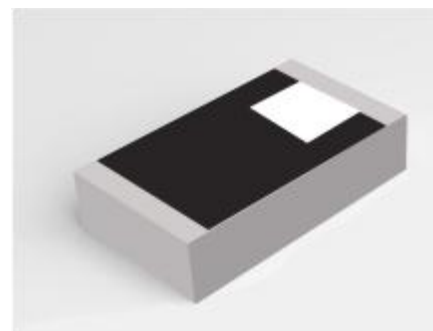
Data Sheet

CS-2450-31-L

For 2400-2484MHz
3.2x1.6mm [EIA1206]

特征 Feature

- 重量轻，结构紧凑
Light weight, compact
- 宽带大，低成本
Wide bandwidth, low cost
- 高增益内置天线
Built-in antenna with high gain

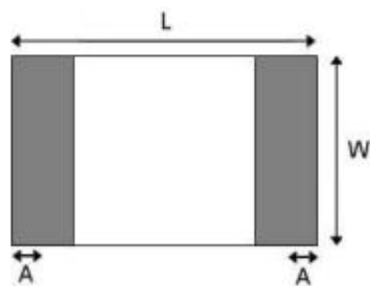


应用 Application

- 蓝牙技术 Bluetooth
2.4 GHz 频段 IEEE802.11g/b
- 齐格比系统
Zigbee systems
- 其它 etc...

形状和尺寸(单位: mm)

Shapes And Dimensions Dimensions in mm



L	W	A	H
3.10±0.10	1.55±0.10	0.40±0.20	0.55±0.1



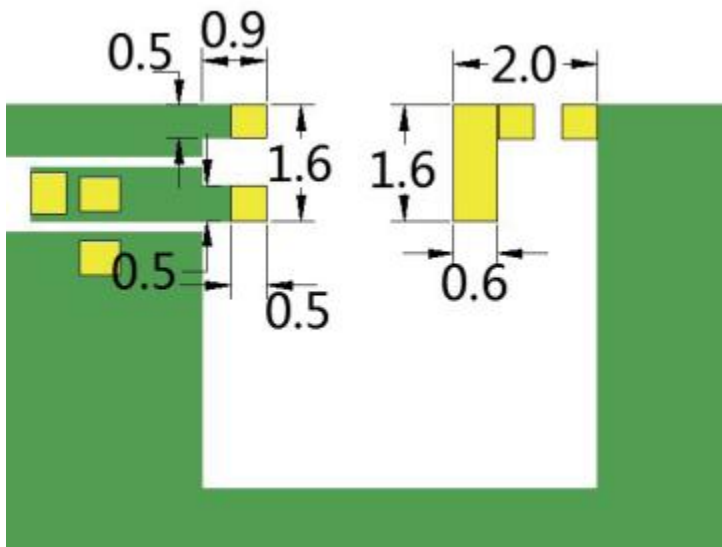
电气特性 Electrical Characteristics per line(TA = 25℃)

参 数 Parameter	规 格 Specification	单 位 Units
频 带 Frequency Band	2400~2483	MHz
极 化 Polar ization	线极化	
*最大增益 Peak Gain	2.58	dBi
*效 率 Efficiency	72.30	%
阻 抗 Im pendance	50	Ω

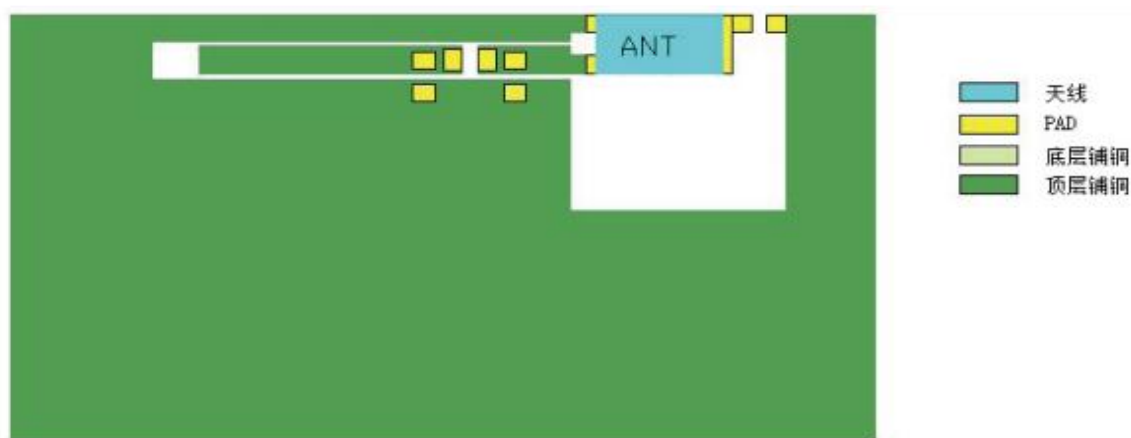
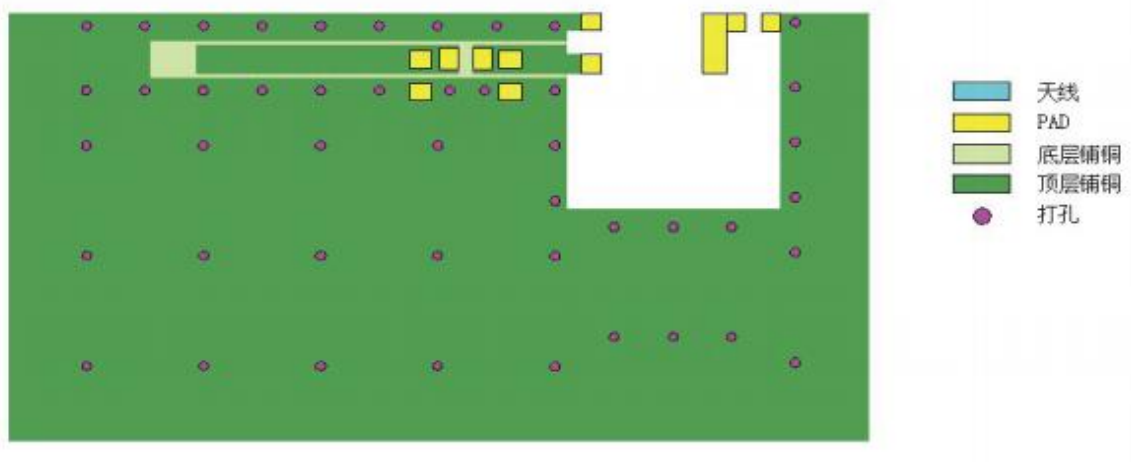
■ 编码 Part Numbering System

CS - 2450 - 31 - L

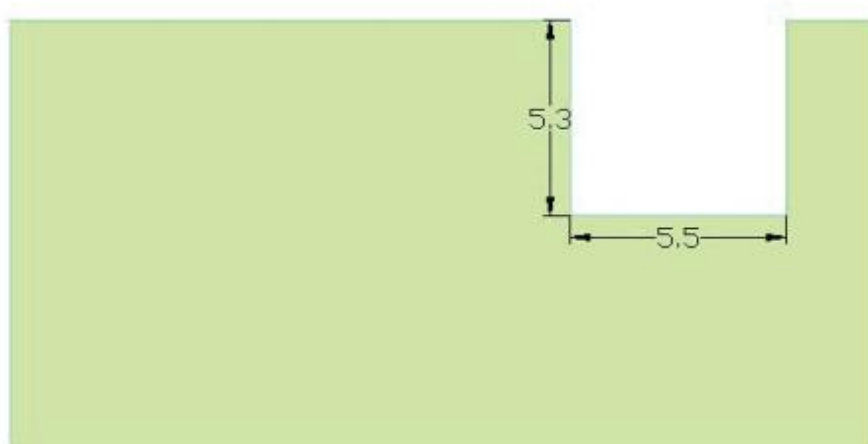
Material Frequency Size Type



■ 评价板 Evaluation

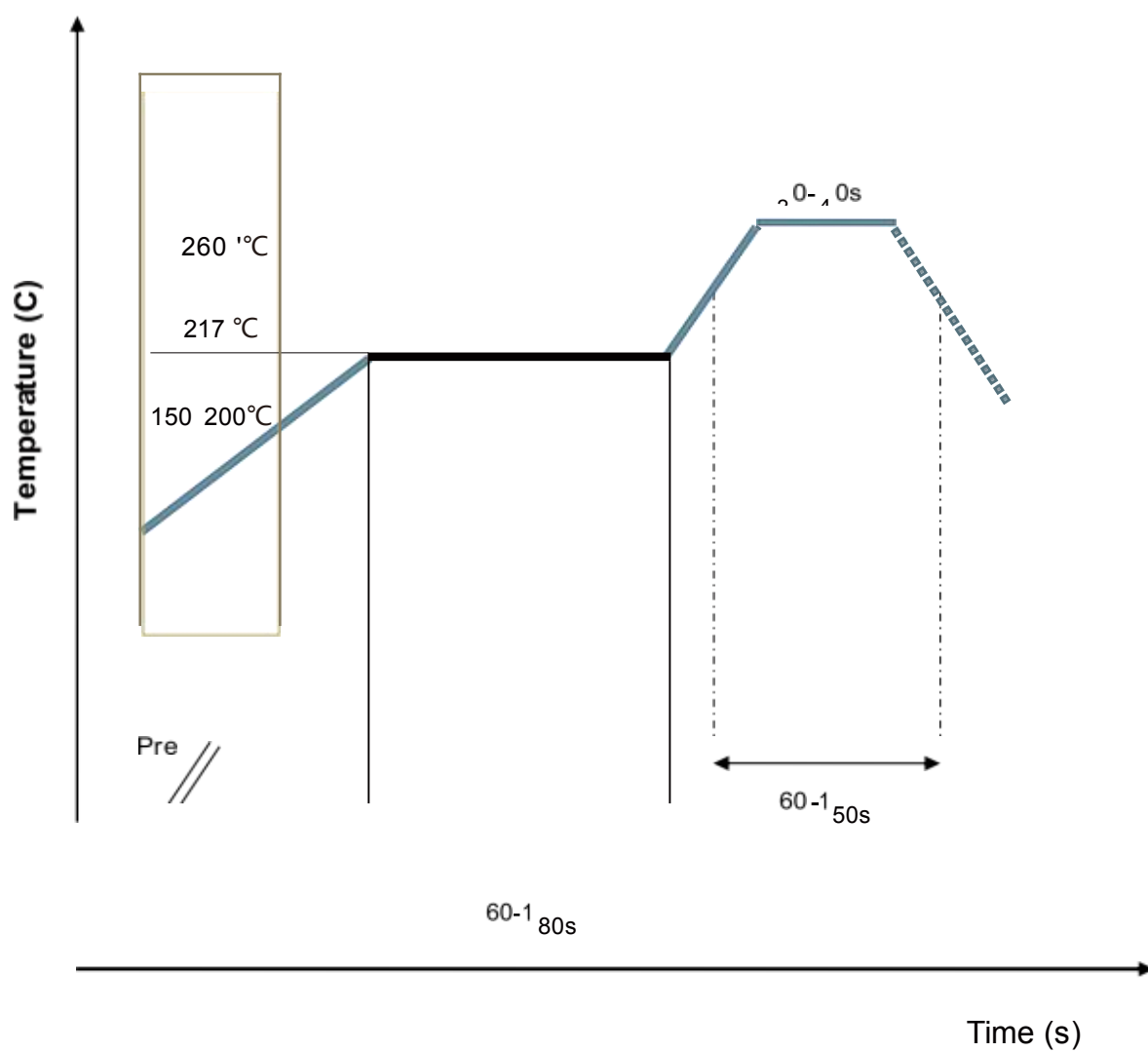


Board



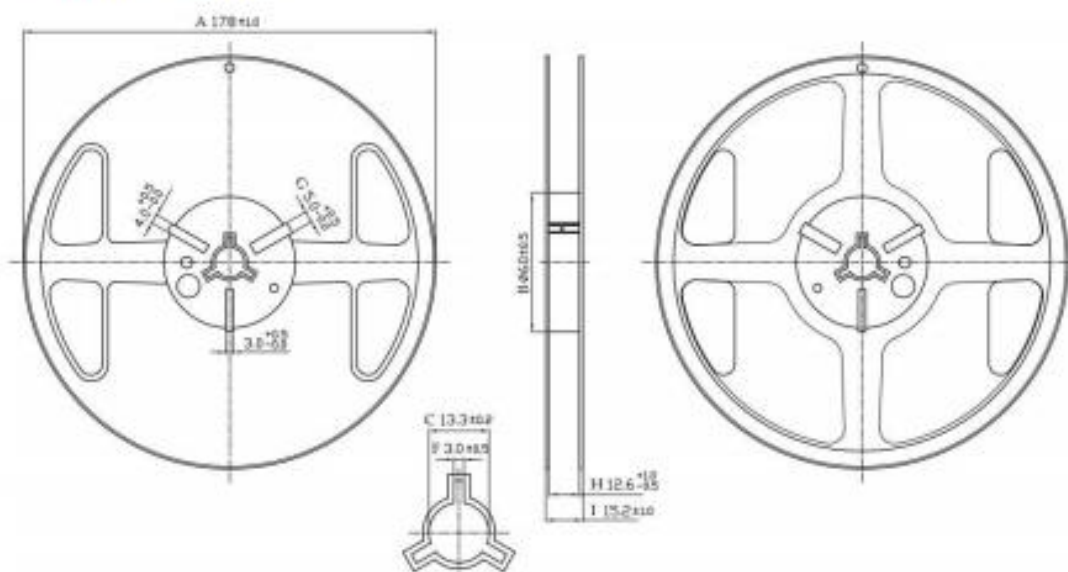
■ 推荐回流剖面

RECOMMENDED REFLOW PROFILE

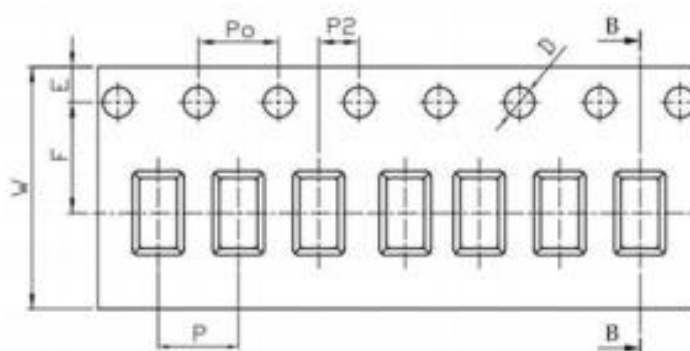


■ 包装形式 Packaging Style

□ REEL DIMENSIONS



□ 胶带尺寸 TAPE DIMENSIONS



Feature	Specifications	Tolerances
W	8.00	±0.30
P	4.00	±0.10
E	1.75	±0.10
F	3.50	±0.10
P2	2.00	±0.10
D	1.50	+0.10 -0.00
P0	4.00	±0.10
10P0	40.00	±0.20

有源测试数据

Test Result	Bluetooth TRP			Test Result	Bluetooth TIS		
	0	39	78		0	39	78
Frequency (MHz)	2402	2441	2480	Frequency (MHz)	2402	2441	2480
TRP (dBm)	2.49	2.74	1.21	TIS (dBm)	-82.65	-81.78	-81.29
NHPRP (dBm)	0.57	0.99	-0.67	NHPIS (dBm)	-80.72	-80.03	-79.41
MAX (dBm)	8.55	9.29	7.23	RSSIAve	0.97	1.42	0.01
EIRP peak	8.55	9.29	7.23	MaxPosRSSI	5.6	6.65	4.86
Min (dBm)	-10.8	-10.2	-9.44	MaxPosSens	-87.28	-87	-86.13
Attenuation Horiz	44.7	44.43	44.44	MAX (dBm)	7.03	7.97	6.03
Attenuation Vertic	44.21	43.92	43.88	EIS peak	7.03	7.97	6.03
				Min (dBm)	-12.32	-11.52	-10.64
				Attenuation Horiz	43.18	43.11	43.24
				Attenuation Vertic	42.69	42.6	42.67

