

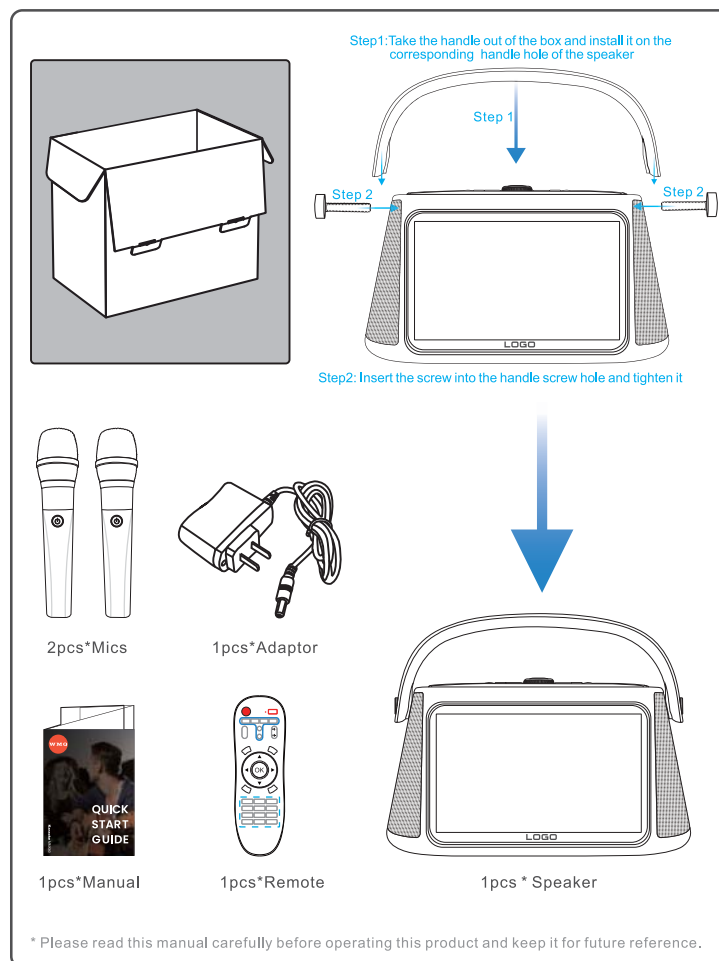


**Karaoke MMX80**

# QUICK START GUIDE



## WHAT'S IN THE BOX



## Safety Instructions

---



### CAUTION RISK OF SHOCK



**CAUTION:** To reduce the risk of electric shock, do not remove cover (or back). No user-serviceable parts inside. Only refer servicing to qualified service personnel.

### Explanation of Graphical Symbols



The lightning flash & arrowhead symbol within an equilateral triangle, is intended to alert you to the presence of danger.



The exclamation point within an equilateral triangle is intended to alert you to the presence of important operating and servicing instructions.

**WARNING:** To reduce the risk of fire or electric shock, do not expose this unit to rain or moisture.

### Recycling Notice

Before making any connections, ensure that all related electrical devices are powered off. The "white" input/output jacks on the amplifier are for connecting the left channel, and the "red" jacks are for connecting the right channel. Make sure the left and right channels are connected correctly. Fully insert the plug of the wire you wish to connect into the jack. Incomplete connections may result in no sound or noise. When unplugging the power cord from the power outlet, be sure to hold the molded part of the power cord plug while unplugging.

# Safety Instructions

---

Please read and understand all instructions before using the product. Damage caused by failure to follow instructions is not covered by the warranty.

## **WARNING**

### **Risk of electric shock or fire!**

- Before establishing or modifying any connections, make sure all devices are unplugged from the power outlet.
- Do not expose the product and accessories to rain or water.
- Do not place liquid containers (such as vases) near the product. If liquid spills on the product or enters the device, immediately disconnect the power and contact the after-sales service center. The product should only be used again after inspection.
- Do not place the product and accessories near open flames or other heat sources, including direct sunlight.
- Do not insert any objects into the ventilation slots or other openings of the product.
- During thunderstorms, stay away from this device.
- To completely disconnect this product from the main power supply, ensure that the plug can be unplugged from the socket.
- While in use, to ensure complete disconnection from the main power supply, keep the plug nearby so it can be immediately unplugged from the socket if necessary.

### **Recycling Notice**



This electronic equipment contains many recyclable materials and must be dismantled by professional companies. If you want to dispose of an old machine, please take it to a recycling center. For the disposal of packaging materials, waste batteries, and old equipment, please comply with local regulations.

# Basics



- All pictures and illustrations in this document are for reference only.
- This system is an Android™ operating system. This article takes the Android system as an example.
- BecauSe Android applications are updated regularly, the actual operation steps and screen shots shall be subject to the latest version.

Before using this information and the product it supports, be sure to read the following:

- Safety, Warranty & Quick Start Guide
- Regulatory Notice
- Important safety and handling information in Appendix

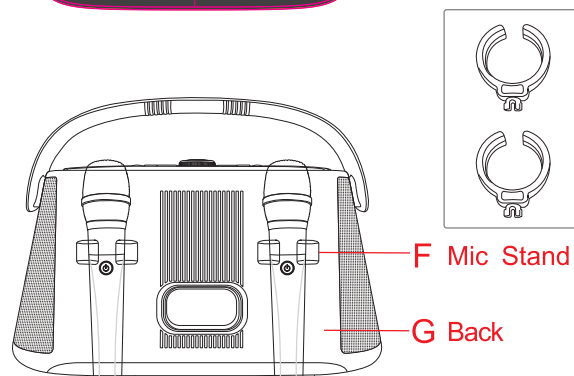
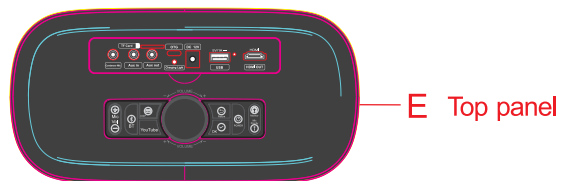
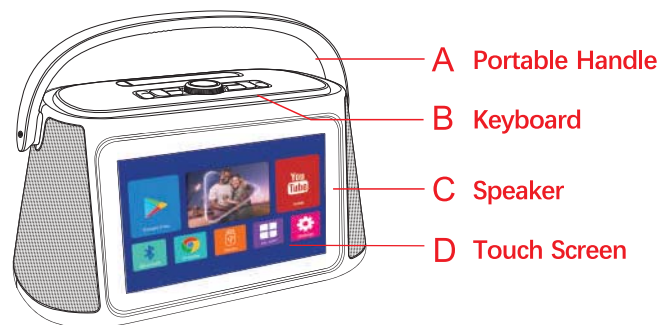
## Getting started


### Parameter

Name		Model	System
Karaoke Machine		MMX80	Android 13 Version
①	Speaker :2*4" inch	②	Screen: 10.1" inch
③	Power : 40 Watts	④	Battery:7.4V/9000mAh
⑤	Voltage:DC12V/4A	⑥	Bluetooth:5.0 Version
⑦	Charging time: 5h	⑧	Playing Time:3Hours
Function:BT/USB/TF/Mic/AUX in/Wifi/MP4/Remote Control			

## Guide

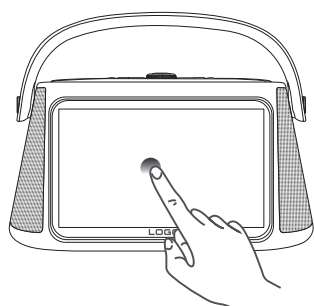
---



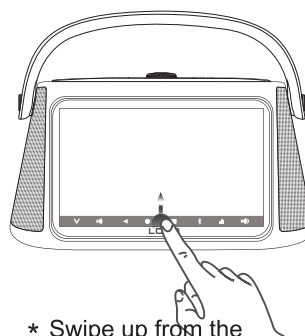
 All pictures and illustrations in this document are for your reference only and may differ from the final product.

## Using the touch screen

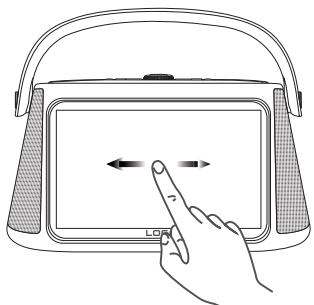
---



\* Tap on an item



\* Swipe up from the bottom of the screen to bring up the multi-function button



\* Swipe left and right to switch between the screens and find the corresponding application you want.

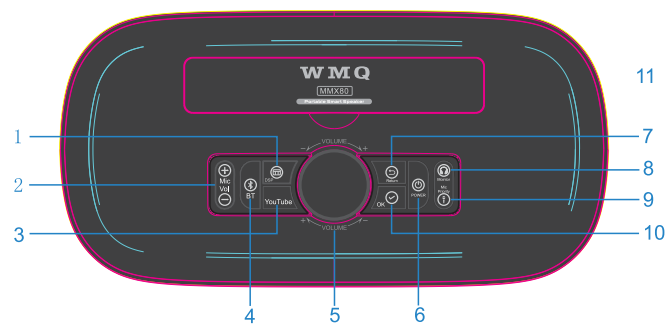


\* Swipe left and right to switch between the screens and find the corresponding application you want.

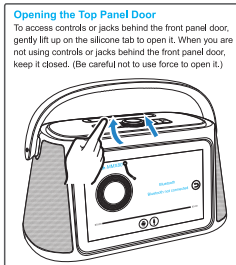


## USING YOUR KARAOKE MACHINE

### Front Panel

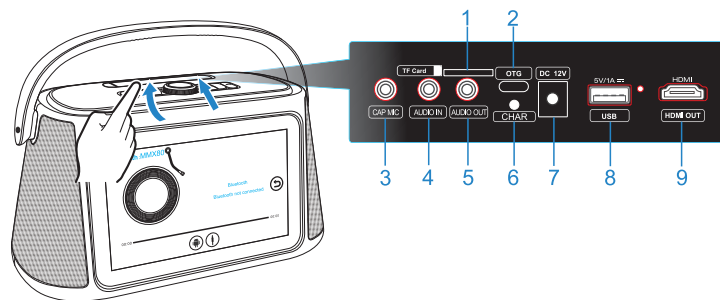


- 1 DSP**  
Turn on DSP adjustment
- 2 Microphone volume +/-**  
When the microphone is connected, adjust the volume by short press/long press
- 3 KTV**  
Short press to enter the KTV application to sing
- 4 Bluetooth**  
Short press to switch to Bluetooth mode
- 5 Master volume**  
Control the volume by adjusting the volume knob left and right
- 6 Power**  
Short press 2s to turn on the machine, long press 3s to turn off
- 7 Return**  
Short press to return to the previous step (previous interface)
- 8 Monitor**  
Short press to turn off the speaker sound, and short press again to turn it on
- 9 Microphone Priority**  
Short press to turn off the mic priority, and short press again to turn it on
- 10 OK**  
Short press to select the selected option



## USING YOUR KARAOKE MACHINE

### Top Panel

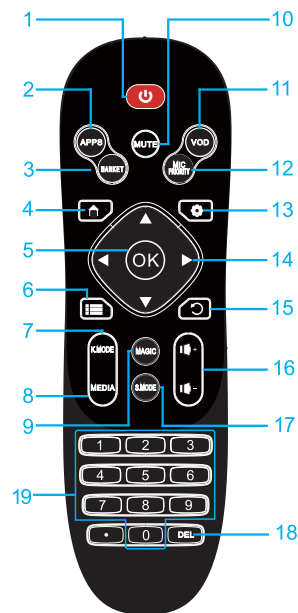


- 1 TF Card slot**  
Insert TF card storage device and use this product to play video and music files.
- 2 OTG**  
Connect mobile phone/computer to achieve HD digital live broadcast/internal recording.
- 3 Condenser Microphone**  
External input microphone with 3.5mm interface.
- 4 Audio input**  
Use a 3.5mm audio cable to Connect an external device via the Line in jack to play audio.
- 5 Audio output**  
Output audio to an external device via the Line out jack.
- 6 Charging indicator light**  
Charge this product. The indicator light turns red when charging and turns off when fully charged
- 7 Power input IDC 12V**  
You can connect the power cord to charge the battery of the product.
- 8 USB input port**  
Insert a USB storage device and use this product to play video and music files.
- 9 HDMI output port**  
Output the Audio/Video to a monitor or TV via a high-definition HDMI cable.

**PS:** This product uses a 12V/4A power adapter to charge. Please choose the original accessories for charging. Do not use any accessories other than this product to charge. Otherwise, you will be responsible for the consequences.

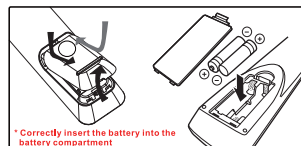
## USING YOUR KARAOKE MACHINE

### Remote Control



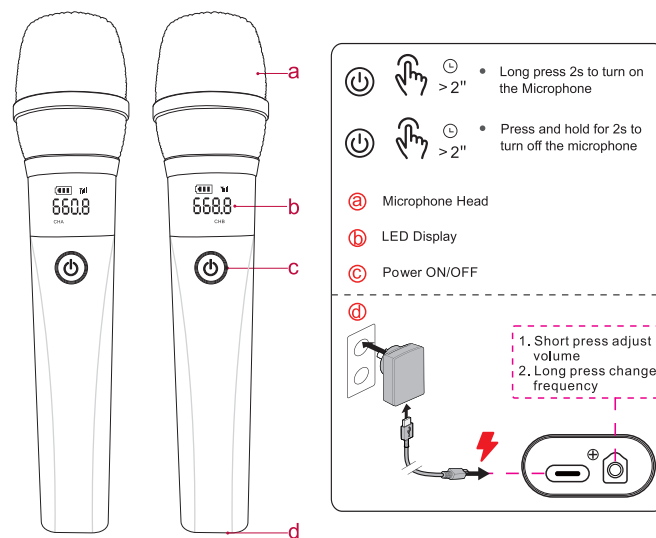
- 1 POWER**  
Turn the power on or off
- 2 APPS**  
Open more applications page
- 3 MARKET**  
Open Google play store
- 4 HOME**  
Return to the main interface
- 5 OK**  
Return to the main interface
- 6 MENU**  
Open the menu options

- 7 KARAOKE MODE**  
Create a karaoke-ready version of any song by muting the vocals.
- 8 MEDIA**  
Open media player(USB/TF)
- 9 MAGIC**  
Turn on/off magic mode vocal effects
- 10 MUTE**  
Turn on/off magic mode vocal effects
- 11 VOD**  
Turn on/off magic mode vocal effects
- 12 MIC PRIORITY**  
Turn on/off magic mode vocal effects
- 13 SETTINGS**  
Turn on/off magic mode vocal effects
- 14 ▲▼◀▶ CONTROLS**  
Up, down, left, and right navigation keys
- 15 RETURN**  
Back to the previous page
- 16 VOLUME +/-**  
Adjust the Volume UP/DOWN
- 17 SPEECH MODE**  
Set the EQ to Speech Mode.
- 18 DELETE**  
Delete the entered item
- 1 0-9 Number**  
Enter the corresponding number to switch directly to the song



## USING YOUR KARAOKE MACHINE

### Wireless Microphone



#### Notes on using the microphone correctly!

- \* When using the microphone, keep a distance of 5~10cm between the mic and the mouth.
- \* To ensure clear sound, leave a certain gap between the place where you hold it .
- \* Do not block the bottom of the microphone, which will prevent the correct sound reproduction, making the bass unclear and prone to howling.
- \* The microphone built-in 18650 lithium battery.
- \* The microphone supports charging while using it.
- \* The charging port is located at the bottom of the microphone and is charged using Type-C.



\* When using the microphones, it's important to hold it in the middle, avoiding covering the bottom part where the antenna is located. Holding the bottom can interfere with the signal transmission, leading to audio dropouts.

## USING YOUR KARAOKE MACHINE

### Bluetooth Connection

#### Play audio through Bluetooth




The product can stream music from your Bluetooth device to the system through Bluetooth.

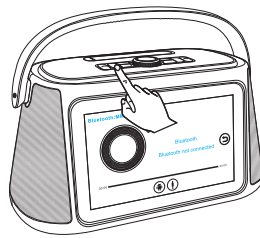
#### Please review the following before using this device

Bluetooth specifications:

- Bluetooth version: 5.0
- Bluetooth receiving distance: 8-10 meters.

- Bluetooth performance can be affected by the distance between this product and your Bluetooth device and the environment of operation.






- 1 Press and hold  for 3 seconds to switch on "MMX80"
  - a. Press the  button on the top of the product to enter Bluetooth mode
  - b. Click the  icon on the product screen to enter Bluetooth mode



( a )



( b )

- 2 Open the "SETTINGS (  /  ) " on your phone and select the  function
- 3 Turn on the Bluetooth switch on your phone (  on >  off ) .



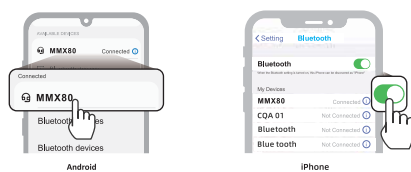
<Android>



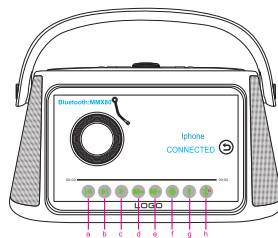
<iPhone>

## Bluetooth Connection

- 4 Choose "MMX80" on your Bluetooth device to connect.  
( If there is no "MMX80" in the list, click the refresh (🔄) icon on your phone or restart the Bluetooth switch on your phone.



- 5 When the smart device is successfully connected to the "MMX80", there will be a "ding dong" prompt sound from the speaker, indicating that the Bluetooth connection is successful, and your phone name will be displayed on the product screen.



- |                        |                      |
|------------------------|----------------------|
| Ⓐ Previous song        | Ⓔ Turn up the Volume |
| Ⓑ Next song            | Ⓕ Return to the Home |
| Ⓒ Pause / Play         | Ⓖ Turn on AUX        |
| Ⓓ Turn down the Volume | Ⓗ Cut off Bluetooth  |

### Notes:

- The closer the Bluetooth device is to the speaker, the better the connection effect.
- When using Bluetooth, adjust the Bluetooth device to an appropriate volume.
- After this product is connected to power, if you try to connect this product with a Bluetooth device that has been connected to this product before, this product will automatically start and connect to the Bluetooth device.

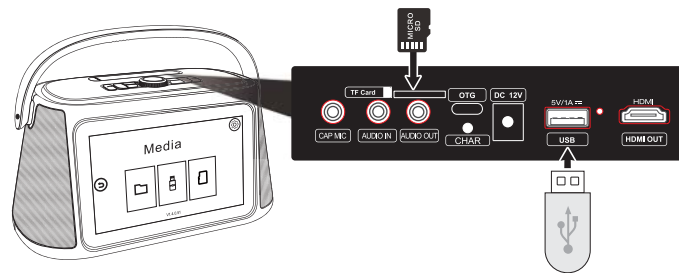
## USING YOUR KARAOKE MACHINE

### USB/TF Card Connection

#### Play audio through USB/TF Card

You can watch audio/video files through external USB/TF storage devices.

- 1 Turn on this MMX80, then open the top cover and insert the USB/TF storage device with audio/video format files into the USB/TF slot.
- 2 The P10 machine will automatically be switched to USB/TF source.
  - If you insert a USB/TF card at the same time, the device will prioritize reading the USB by default;
  - If there are music and video files in the USB/TF card at the same time, the product will automatically prioritize playing the video file



### Supported USB devices

USB	USB 2.0   USB 3.0
-----	-------------------

Make sure that the USB device contains playable audio contents in supported formats.

Supported audio formats: MP3, WAV, WMA, FLAC.

Supported video formats: MV, Mp4, Avi, Mov, Mkv.

#### Notes:

- USB/TF devices with large storage capacity may take several minutes or longer to read files.
- CQA is not responsible for any data loss. Please back up your data at any time to reduce the loss caused by data loss.
- Only FAT16/FAT32 formats are supported. ExFAT/NTFS formats are not supported.
- When the USB/TF card storage device cannot be recognized, please check whether the device is supported and reinsert it.

## AUX Connection

### Play audio through Line in

With this product, you can listen to an external audio device such as an MP3 player.

#### AUX INPUT Connection

Connect an output of auxiliary device (Iphone, audio, etc) to the AUX IN connector.

- 1 Turn on the product, open the cover on the top, and connect the external device to the AUX.IN port via a 3.5mm stereo audio cable.
- 2 Connect an audio input cable (not supplied) with a 3.5mm connector on both ends to:
  - The Audio in jack on the product.
  - The headphone jack on the MP3 player.

#### AUX INPUT Connection

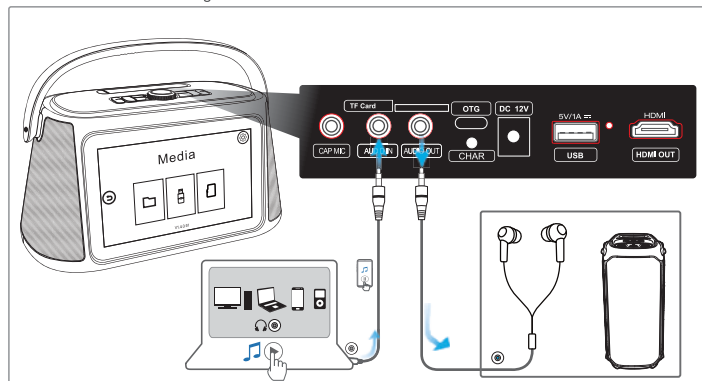
- 1 Connect an audio input cable (not supplied) with a 3.5mm connector on both ends to:
  - One end is connected to the product audio output jack
  - The other end is connected to the AUX in input port of the external audio device

You can hear the sound through the **MMX80** Karaoke Machine system's speakers.

#### Notes:

You need to re-insert the audio input cable into the Audio in jack if you want to switch back to Audio in from the other sources.

Audio in/out connection diagram





## HDMI Connection

---

### | Play audio through HDMI out

Use HDMI cable to connect display device with HDMI IN

---

#### HDMI Connection

| If you have an HDMI TV or Monitor, you can connect it to this player using an HDMI cable (Type A, High Speed HDMI™ Cable). Connect the HDMI OUT jack on the P10 Machine to the HDMI IN jack on an HDMI-compatible TV or monitor.

## OTG Connection

---

### | Play Live through OTG

Use the live port to broadcast live with your phone/Sound card

---

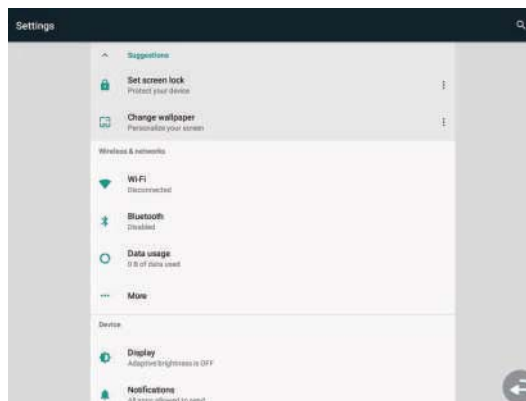
#### OTG Connection

- | • Download and register on your preferred live broadcasting app, such as Facebook, TikTok, YouTube, and so on.
- Establish a connection between your phone and the 'Live' port (3 or 6) on the machine using a Type-c OTG cable or 3.5 mm Aux cable.
- Launch the app on your phone, and you're all set to use the P10's microphone for your live online broadcasts.


## SETTING

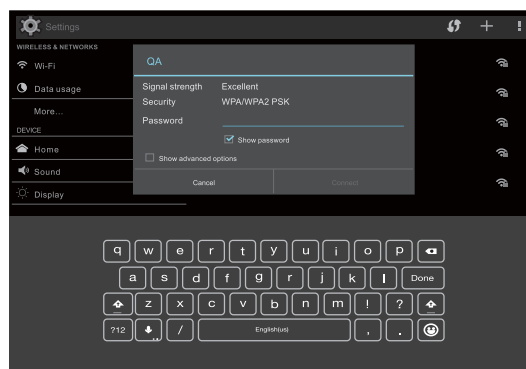
### Adjust the setup settings

By using the Setup menu, you can make various adjustments to items such as Wifi/ Language and storage. You can also set a language for the subtitles and the Setup menu, among other things.



#### Such As: How to setting WI-FI function

After entering the Settings, click the  Wi-Fi and to choose your Wi-Fi ID, Enter the correct Wi-Fi password. Press the Connect key to connect to the network.





**W M Q**

All-in-one Portable Smart Karaoke Machine

#### FCC Warning Statement:

This equipment has been tested and found to comply with the limits for a Class B digital device, pursuant to part 15 of the FCC Rules. These limits are designed to provide reasonable protection against harmful interference in a residential installation. This equipment generates, uses and can radiate radio frequency energy and, if not installed and used in accordance with the instructions, may cause harmful interference to radio communications. However, there is no guarantee that interference will not occur in a particular installation. If this equipment does cause harmful interference to radio or television reception, which can be determined by turning the equipment off and on, the user is encouraged to try to correct the interference by one or more of the following measures:

- Reorient or relocate the receiving antenna.
- Increase the separation between the equipment and receiver.
- Connect the equipment into an outlet on a circuit different from that to which the receiver is connected.
- Consult the dealer or an experienced radio/TV technician for help.

Caution: Any changes or modifications to this device not explicitly approved by manufacturer could void your authority to operate this equipment.

This device complies with part 15 of the FCC Rules. Operation is subject to the following two conditions: (1) This device may not cause harmful interference, and (2) this device must accept any interference received, including interference that may cause undesired operation.

The device has been evaluated to meet general RF exposure requirement.