

# User Manual

## IMIKI HOLO Ultra



Scan the QR code to get the  
manual in more languages

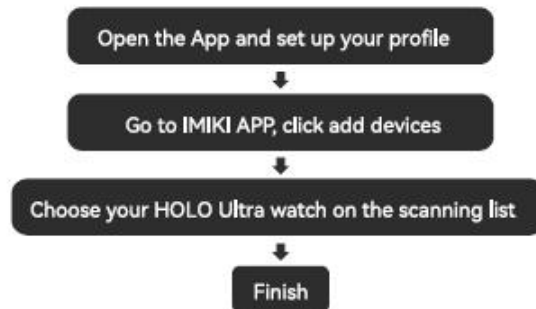
## How To Download & Connect To APP

Scan the following QR code, download and install the IMIKI App.

" Scan QR Code and Download "

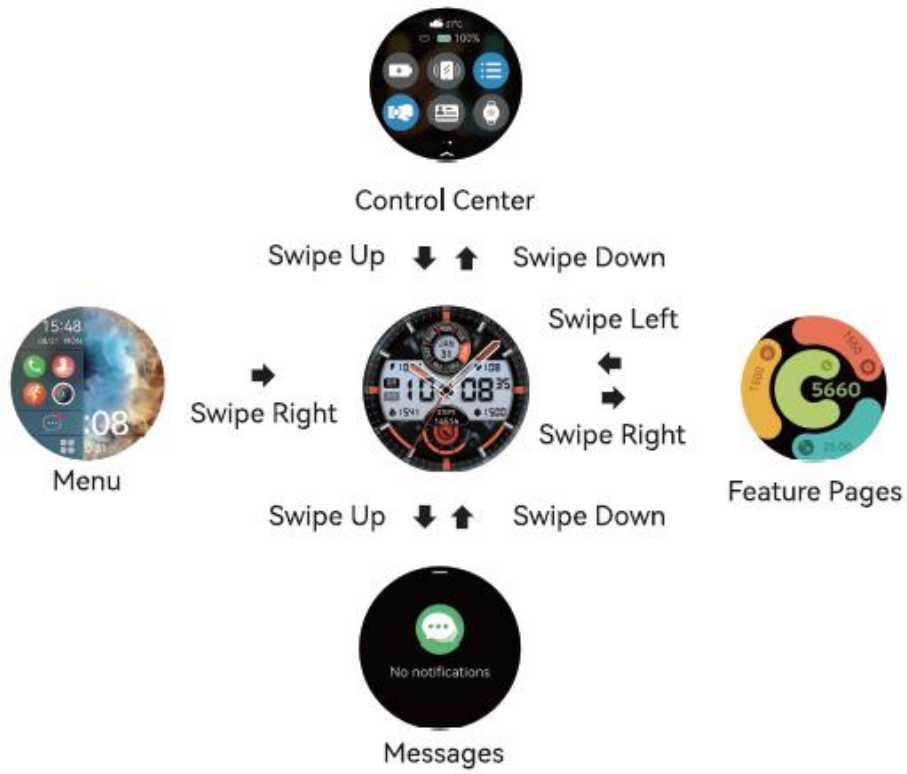


## Pairing



The MAC address on the "Setting"-"About" page could help you identify your device on the scanning list.

## Use the Touch Screen







## Smart Watch Features

	<b>Workouts:</b> Supports 100+ exercise modes. You can view heart rate, calorie, steps, distance and training effect in real time during exercise.		<b>Blood Pressure Monitor:</b> Test the blood pressure , more detailed information analysis and data records can be viewed in the APP. (The value is for reference only and cannot be used as a medical basis)
	<b>Phone:</b> Connected to the mobile phone via BT you can dial, answer, and hang up calls, and support viewing call records.		<b>Breathing Training:</b> Set the breathing rhythm and time, and follow the training prompts to complete the breathing training.
	<b>Heart Rate:</b> Measure the current heart rate value ; the watch can record and display the heart rate value 24 hours a day. More detailed information analysis and data records can be viewed in the APP. (The value is for reference only and cannot be used as a medical basis)		<b>Blood Oxygen:</b> Monitor blood oxygen status 24 hours a day, record data and display scientific analysis charts. Automatic monitoring can be turned on in the APP. More detailed data records and analysis can be viewed in the APP. (Data are for reference only and cannot be used as medical basis)
	<b>Activity:</b> Record the number of steps, distance, and calories of the day. More detailed information analysis and data records can be viewed in the APP.		<b>Voice Assistant:</b> Click the voice assistant, according to the voice assistant "word" of phone (such as: Siri, Xiaoyi) to wake up the phone function. (Note: The watch needs to be connected to the mobile phone via BT before it can be used).
	<b>SOS:</b> Click "SOS" on the APP to add contacts.		<b>Emotions:</b> Joy, calm, anxiety, irritability, accurate detection of 4 emotions, allowing you to understand yourself better.

## Smart Watch Features

	<b>Camera Control:</b> After connecting to the phone and opening the App, the watch can remotely control the phone to take pictures, and can set the delay time and the number of continuous shots.		<b>Pomodoro:</b> You can set the time yourself, start "focus on work" to complete the reminder, and then "take a break" to complete the reminder.
	<b>Music:</b> After connecting to the mobile phone, you can click "play/pause/previous/next song" on the smart watch to control the music from mobile phone, and the volume can be adjusted.		<b>Weather:</b> After connecting to your phone, open and set the weather function in the IMKI APP. The watch can display weather information in recent days.
	<b>Recording:</b> Click the recording function to record the sound you want to record anytime and anywhere.		<b>Flashlight:</b> Tap to turn on the flashlight, and tap the flashlight page to turn off.
	<b>Sleep:</b> Record and display the total sleep time last night and the sleep status of deep sleep, light sleep, rapid eye movement and awake. More detailed information analysis and data records can be viewed in the IMKI APP.		<b>Calculator:</b> Supports simple calculation functions and can perform basic calculations such as addition, subtraction, multiplication, and division.
	<b>Alarm:</b> You can set the alarm on the watch or synchronize the alarm set on the APP. Up to 10 alarms can be set.		<b>Timer:</b> You can set the timing time by yourself such as 1 minute / 5 minutes, 10 minutes, etc.

## Smart Watch Features

	<p><b>Stopwatch:</b> Supports 10 groups of time records.</p>		<p><b>AOD:</b> Turn on the AOD mode. When the watch screen is turned off, the watch will display the digital clock or analog clock on the dial. (If this function is turned on, the battery life will be reduced)</p>
	<p><b>Settings include functions:</b> Watch face and time, display, sound &amp; vibration, SOS, usage preferences, and system.</p>		<p><b>Sound settings:</b> Turn off the entertainment sound: play music/ swipe TikTok/watch WeChat Moments videos, watch TV/movies, the watch will not play sound, but the phone will play sound. Turn on the entertainment sound: play music/ swipe TikTok/watch WeChat Moments videos, watch TV/movies, the watch will play sound, and the phone will not play sound. (The main control is the third-party playing sound)</p>

## Other Functions

Electronic card, theater mode, power saving mode, massive online dials, customized dials, music playback, raising your hand to turn on the screen, turning your hand to turn off the screen, looking for your phone, looking for your watch, password lock, scheduled DND mode, Brightness adjustment, sedentary reminder, drinking water reminder, hand washing reminder, medication reminder, meal reminder, customized reminder, social message push, various incoming call reminders, etc.

## Specifications

Model: **IMKI HOLO Ultra**

Battery Capacity: 360mAh

Standby Time: 15 Days

Charging Voltage: 3.8V

Water & Dust Proof: IP68

BT Version: BLE/BT 5.3

Frequency Band: 2.402MHz - 2480MHz

Max. Signal Transmission: < /= 10dBm

## Charging

Attach the charging cable to the watch charging port, ensuring the metal pins fully connected.

Please use the correct charging adapters which are 5V 0.5A above.

**Note:** If watch cannot be powered on after being left unused for long time, please clean up the charging metal pins to make sure connecting well.

## Warranty

1. During normal use of this product, if there are product quality problems caused by manufacturing, materials, design, etc., the motherboard will be guaranteed for free within one year from the date of purchase, and the battery and charger will be guaranteed for half a year.
2. Below reasons cause to defectives are not included in free warranty service:
  - 1) Personal assemble or disassemble.
  - 2) Falling damage during use.
  - 3) All man-made damage or due to the third party's fault, improper use (such as: water in the smart watch, external force shattering, scratch during use etc).
3. Please provide a warranty card with the details filled when request for after selling service.
4. Please contact with direct dealers for warranty service.
5. Please note all functions of the product are based on physical objects.

## Notes:

1. To ensure waterproof, please DO NOT:
  - 1) Wear the watch during hot shower or in hot tea and other corrosive liquids
  - 2) Remove any screws or buttons.
2. Products with batteries cannot be disposed with household waste. Please send this product to WEEE collecting points near you.

Warranty Certificate			
Client Info			
Product Type		Vendor	(Stamp)
Client Name		Contact Info	
Vendor's Contact		Purchase Date	
Product IMEI Code			
Client's Address			
Warranty Record			
Date	Problems	Diagnosis	More Info



## Disposal of electrical and electronic equipment

---



The crossed-out garbage can means that you are legally obliged to collect these devices separately from unsorted municipal waste. Disposal in the residual waste bin or yellow bin is prohibited. If the products contain batteries or accumulators that are not permanently installed, they must be removed before disposal and disposed of separately as batteries.

## Possibilities of returning old appliances

---

Owners of old devices can hand them in within the framework of the options set up and available by public waste disposal authorities for returning or collecting old devices to ensure that the old devices are properly disposed of.

## Data protection

---

We would like to point out to all end users of waste electrical and electronic equipment that they are responsible for deleting personal data on the old equipment to be disposed of.



We, **IMIKI** Co, Ltd, hereby declare that this device complies with the basic requirements and the other applicable provisions of the EU Declaration of Conformity according to the Radio Equipment Directive 2014/53/EU and the RoHS Directive 2011/65/EU. The full EU declaration of conformity can be found on the website:  
<https://www.imikilife.com/declarations>

Manufacturer: **IMIKI** Co.,Ltd

Address:1401F, South Area, Jingji Yujing Times Building, Longgang District, Shenzhen, China

FCC Statement:

This device complies with part 15 of the FCC Rules. Operation is subject to the following

two conditions:

(1) This device may not cause harmful interference, and

(2) this device

must accept any interference received, including interference that may cause undesired operation. This equipment has been tested and found to comply with the limits for a Class B digital

device, pursuant to part 15 of the FCC Rules. These limits are designed to provide reasonable protection against harmful interference in a residential installation.

This equipment generates, uses and can radiate radio frequency energy and, if not installed and used in accordance with the

instructions, may cause harmful interference to radio communications. However, there is no guarantee that interference will not occur in a particular installation. If this equipment does cause harmful interference to radio or television reception, which can be determined by turning the

equipment off and on, the

user is encouraged to try to correct the interference by one or more of the following measures:—Reorient or relocate the receiving antenna.

—Increase the separation between the equipment and receiver.

—Connect the equipment into an outlet on a circuit different from that to which the receiver is connected.

—Consult the dealer or an experienced radio/TV technician for help.

Caution: Any changes or modifications not expressly approved by the party