

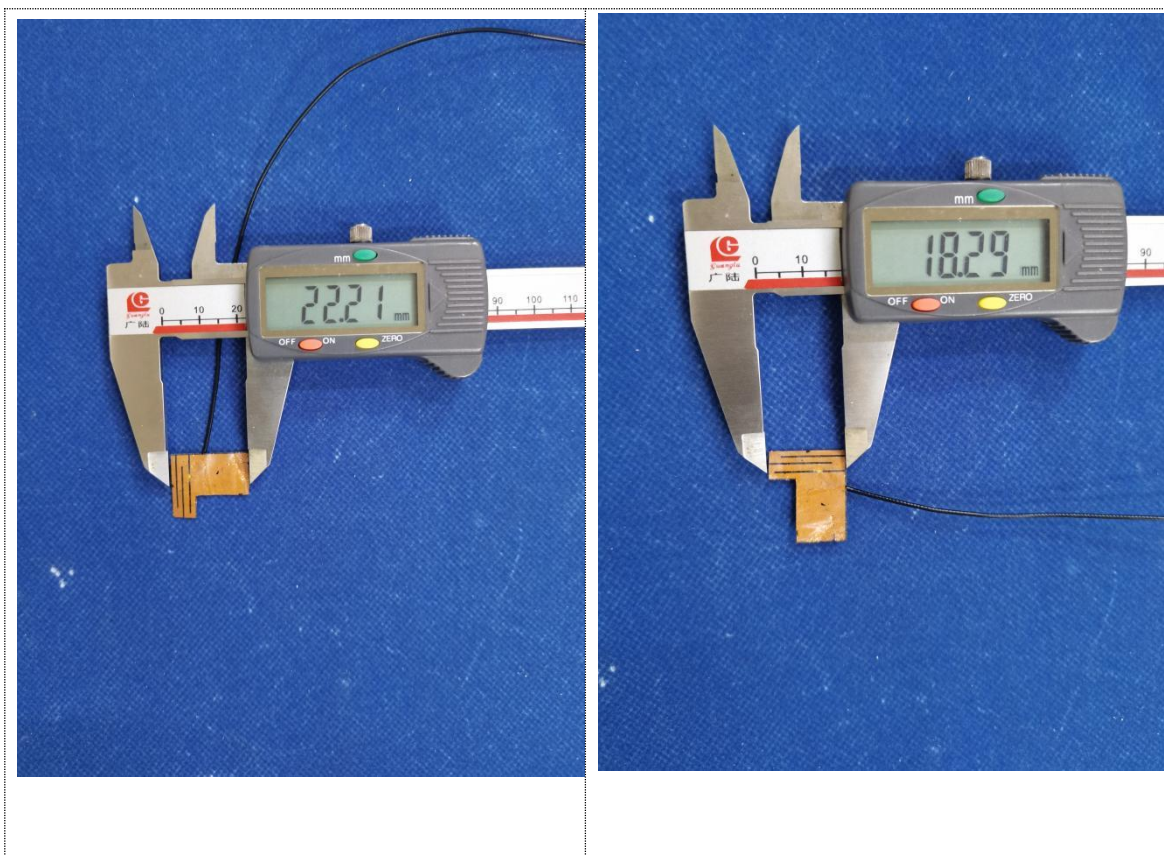
1. Antenna Description:

Antenna type	Internal antenna
Model	BVEVCS-48AJ
Frequency range	2400-2500MHz
Manufacturer	Nanjing Meter Technology Co., Ltd
ANT Peak Gain	1.15 dBi

2. Antenna Photo:

Length: 22.21mm

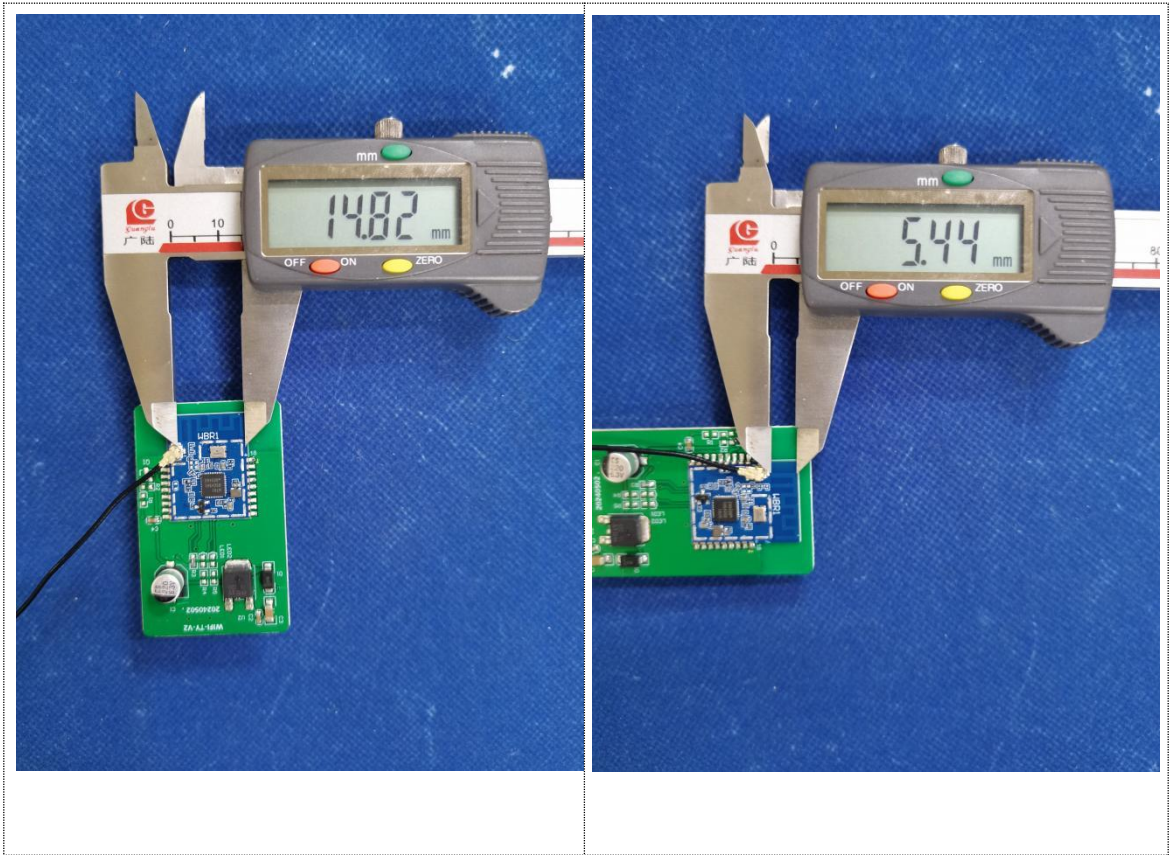
Width: 18.29mm



Length: 14.83mm
Width: 11.90mm



Length: 14.82mm
Width: 5.44mm



3. Test Equipment & Conditions

3.1 Test instrument

VSWR is tested using Agilent E5071B connected to a hand mechanism, and the status is free space.

3.2 Test environment and methods

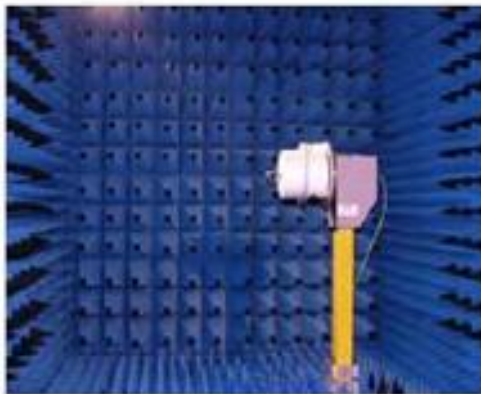
Dark room specifications: ETS-743

TD-SCDMA test equipment: StarPoint SP6010/Agilent 8960

LTE-TDD/FDD-SCDMA test equipment: StarPoint SP8011/CMW500

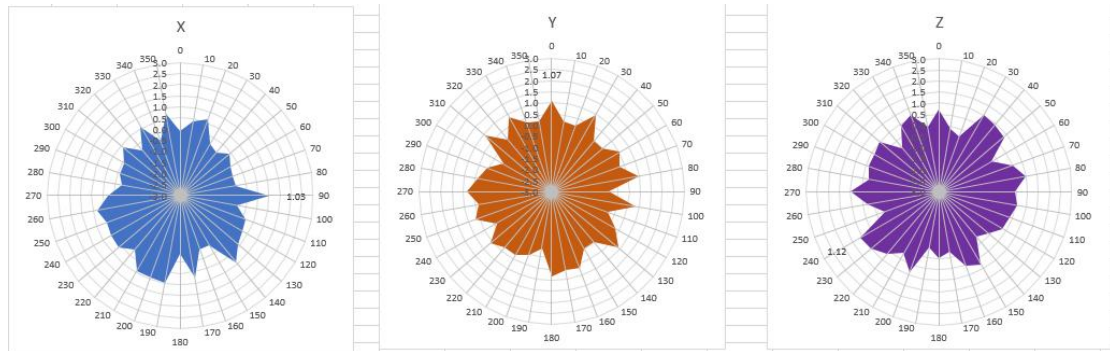
WCDMA/GSM/CDMA test equipment: Agilent 8960

Passive efficiency testing equipment: Agilent Technologies E5071B

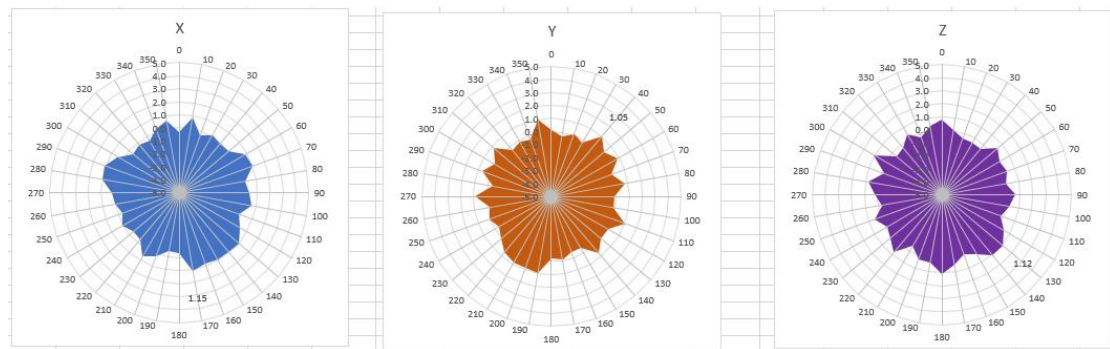


4 . Antenna Radiation Pattern

2400MHz



2450MHz



2500MHz

