



### SPECIFICATIONS FOR APPROVAL

All data in this report only represent the data when the sample antenna is correctly installed in the designated test object. Replacing the test object or changing the installation method and position of the antenna will render the data in the report invalid.

Antenna manufacturer: Shenzhen Lejin radio frequency technology Co., LTD

Company Address: 3rd Floor, Building A4, No. 176 Chongqing Road, Fuhai Street, Bao'an District, Shenzhen, Guangdong Province. (Phone number: 13603098741)

<b>Customer Name:</b>	HKSP
<b>Product Name:</b>	CAM MENL SHUANGTOU
<b>Product Model:</b>	WIFI ANT
<b>Part Number:</b>	LJF02-241010002-R0A
<b>Write By :</b>	李明进
<b>Issued Date:</b>	2024/10/10

CUSTOMER				
ENGINEER R&D DEPT	BUSSINESS DEPT	APPROVED BY	DATE	Edition/Part number

LEJIN				
R&D DEPT	ENGINEER R&D DEPT	APPROVAL	DATE	Edition/Part number

ECN/ECR			

# 目录 Index

- 1、封面 (Cover)
- 2、目录 (Index)
- 3、规格 (Product Specification)
- 4、测试设备 (Test Equipment & Conditions)
- 5、性能测试报告 (Test Report)
- 6、天线图片 (Antenna Picture )

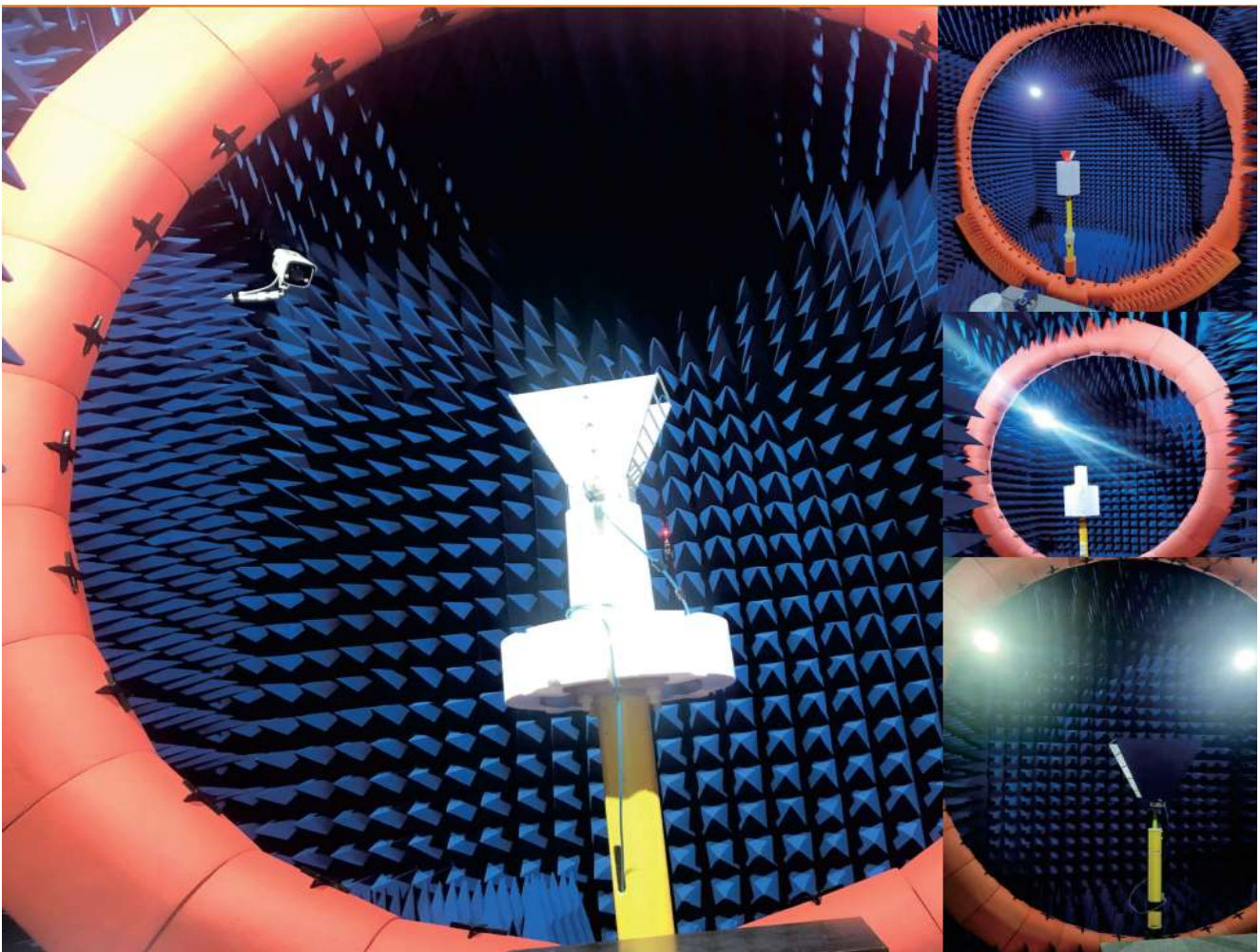


## Electrical Characteristics

Frequency	VSWR	Efficiency	Impedance	Polarization	Gain (dB)
2.4GHZ-2.5GHZ	<1.8	>30%	50 Ohm	Linear	≥0,<2.0
				Linear	
<b>Material &amp; Mechanical Characteristics</b>			<b>Environmental</b>		
Material of Radiator	Cable Type	Connector Type	Dimension	Operation Temperature	Storage Temperature
BL	1.131 L:130 Black	KCC1B1		- 20 °C ~ + 50 °C	- 30 °C ~ + 80 °C

## Test Equipment & Conditions

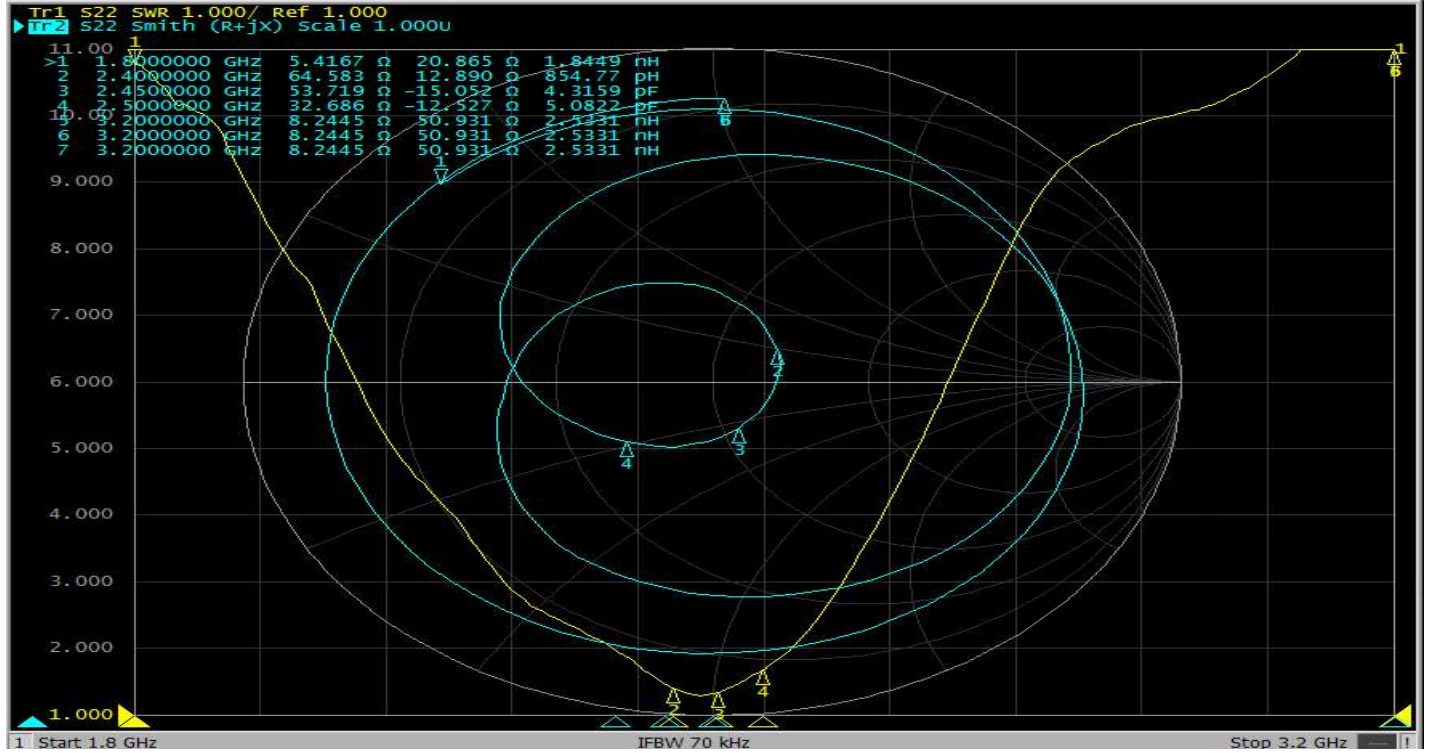
1. **Network Analyzers :Agilent 5071C**
2. **Communications Test Set:Agilent E5515C/CMW500/AT8826**
3. **3D Chamber Test System(ETS743)/STM23+1**



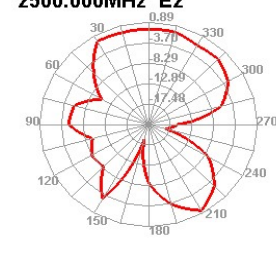
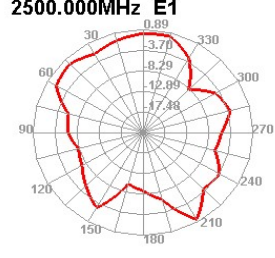
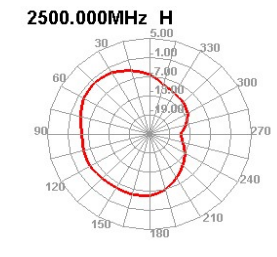
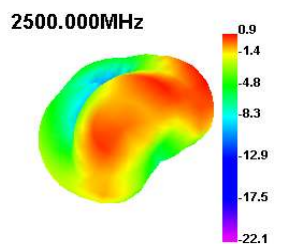
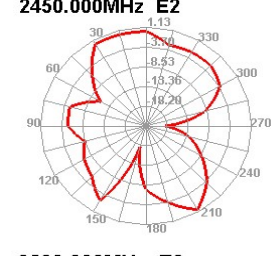
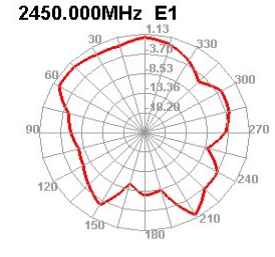
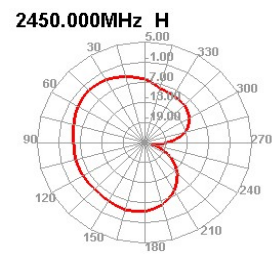
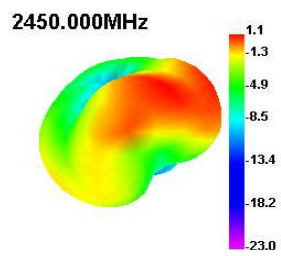
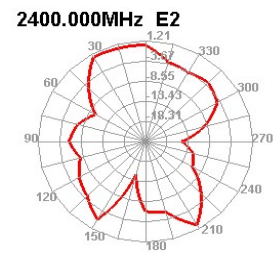
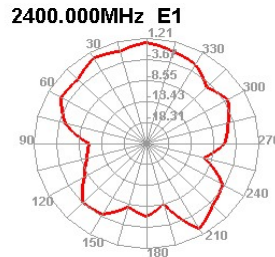
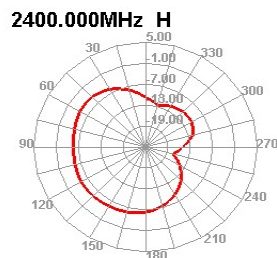
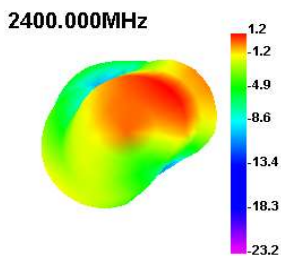
## Antenna Impedance: WIFI ANT

E5071C Network Analyzer

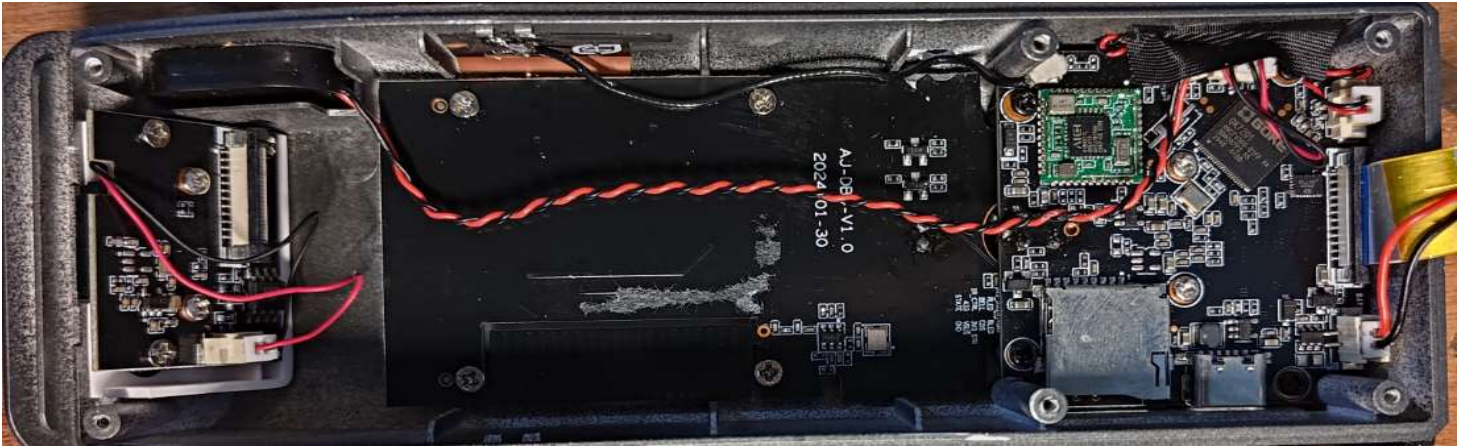
1 Active Ch/Trace 2 Response 3 Stimulus 4 Mkr/Analysis 5 Instr State



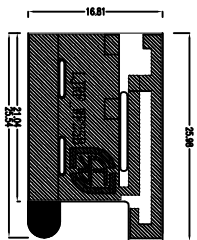
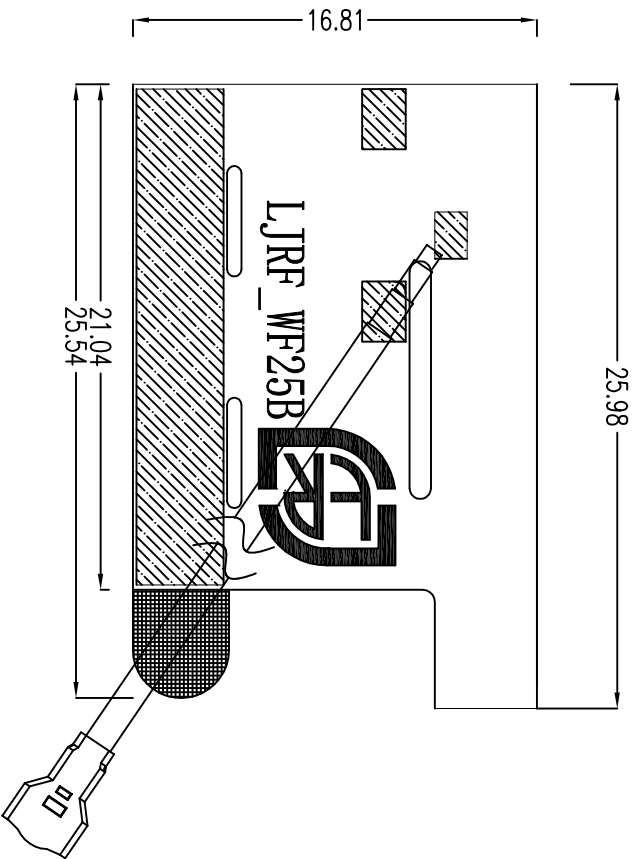
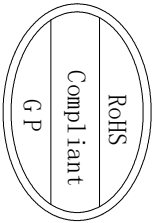
Frequency (MHz)	2400	2410	2420	2430	2440	2450	2460	2470	2480	2490	2500
Gain (dBi)	1.21	1.09	1.43	1.23	1.07	1.13	1.03	1.44	1.32	1.18	0.89
Efficiency (%)	34.74	34.43	38.46	37.98	37.31	38.64	38.29	42.38	41.38	41.09	37.48



Antenna installation method



天线工程图:



Rev	Description	Date	Remark
1			
2			
3			
A	New drawing		

		深圳乐进射频科技有限公司 SHEN ZHEN LEJIN RADIO FREQUENCY CO., LTD	
0~10 10~18 18~30 30~40 40~	±0.05 ±0.10 ±0.12 ±0.15 ±0.20	Third Angle 0.02 ∅0.03 0.02 0.04 ±0.5°	Project Part Name Part No. Material Treatment
CAM WJFI_MAIN		Date 2024-10-10	
LJP01-19042701A-ROA		Checked by RF	
LJP01-241010002-ROA		Approved by Unit mm Scale FIT Rev A	