

FCC Caution:

This device complies with part 15 of the FCC Rules. Operation is subject to the following two conditions: (1) This device may not cause harmful interference, and (2) this device must accept any interference received, including interference that may cause undesired operation.

Any changes or modifications not expressly approved by the party responsible for compliance could void the user's authority to operate the equipment.

NOTE: This equipment has been tested and found to comply with the limits for a Class B digital device, pursuant to Part 15 of the FCC Rules. These limits are designed to provide reasonable protection against harmful interference in a residential installation. This equipment generates, uses and can radiate radio frequency energy and, if not installed and used in accordance with the instructions, may cause harmful interference to radio communications. However, there is no guarantee that interference will not occur in a particular installation.

If this equipment does cause harmful interference to radio or television reception, which can be determined by turning the equipment off and on, the user is encouraged to try to correct the interference by one or more of the following measures:

- Reorient or relocate the receiving antenna.
- Increase the separation between the equipment and receiver.
- Connect the equipment into an outlet on a circuit different from that to which the receiver is connected.
- Consult the dealer or an experienced radio/TV technician for help.

The device has been evaluated to meet general RF exposure requirement. The device can be used in portable exposure condition without restriction.

# A10 Pro

Bluetooth headset



Instruction manual

## Please read before use

Thank you for choosing our smart products. In order to fully understand the capabilities of the device, we recommend that you read this manual carefully. Smart headphones mainly rely on Bluetooth to connect to your mobile phone, which provides new practical features and services to improve your experience. The Company reserves the right to update the contents of this manual at any time without prior notice. We would like to remind you that if your earphone is damaged due to non-compliance with the instructions provided, we do not offer a free warranty.

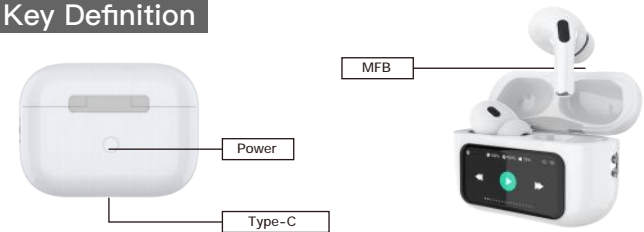
## Basic parameters

Name: Bluetooth headset Model: A10 Pro

Headphone compartment parameters			
Chipset	AB/JL	Touch	COB
FLASH	16/32MB	Hall	Support
BT	BT5.3/3.0	Keys	Support
Screen Size	1.47	Battery	Custom
Resolving Power	172*320	Charging Method	TYPE-C/ supports wireless charging

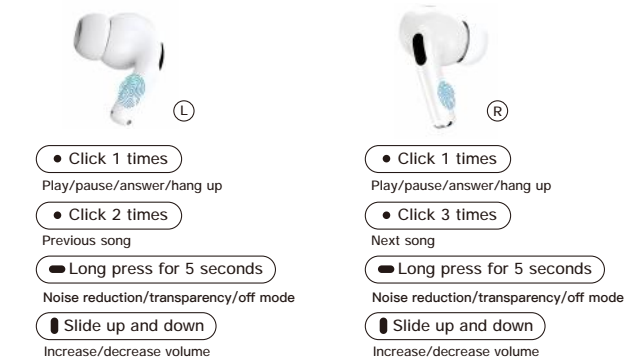
Headphone parameters			
Chipset	AB/JL	Denoise	Support
BT	BT3.0	Ear detection	Support

## Key Definition



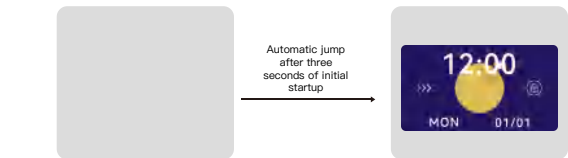
## Instructions

Music	Play/Pause	Click the FMB button
	Next song	Three clicks on the FMB key
	Previous song	Double click the L-FMB key
	Increase/decrease volume	Slide FMB keys up/down
	Noise reduction/transparency/and off mode	Long press the FMB button for 5 seconds
	Auto Play/Pause	Wearing/Removing headphones
Headset	Power on	Headphone compartment power on/ automatically turns on when opened
	Shutdown	Automatically shut down after 1 minute without Bluetooth connection
	Auto pairing	Automatic pairing for outbound warehouse
	Manual pairing	Three-click the bin button
Earphone compartment	Power on	Long press the Power button for 3 seconds
	Shutdown	Press the Power key for 3 seconds to shut down
	On/Off screen	Click the Power button
	Return to Home	Click the Power button

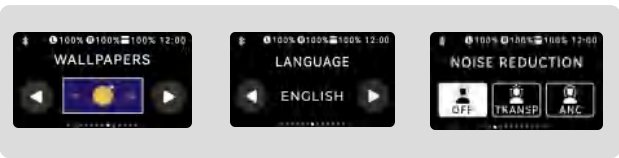


## Charging binmajor function

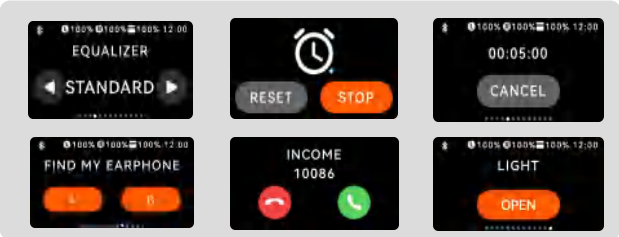
1: First boot: Press and hold the power button for 3 seconds to boot, language selection



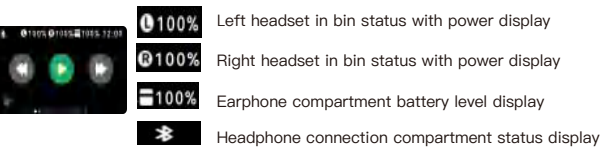
2. Wallpaper selection, language switching, noise reduction switching



3、Other functions



## Status bar icon description



## Warranty card

With the warranty of this card, please keep it properly when sending it for repair. please fill in the relevant information and attach this warranty card

User Profiles	Date:
Username:	Product Fault Description:
Phone:	
Shop to buy:	
Order Number:	
Return Address:	

Warranty service content  
1. The warranty period of the product is 12 months from the date of purchase (packaging accessories are not covered by the warranty);  
2. There is a quality problem within 7 days after purchasing this product, and there is no man-made damage to the appearance after purchase injury, can be directly replaced with the same style and model of the new machine;  
3. When the product fails, it is recommended that you first consult your sales organization or customer service staff, and after eliminating the misoperation factors, they will arrange after sales maintenance services for you.

The following cases are not covered by the warranty  
1. The product exceeds the warranty period;  
2. Failure to issue proof of purchase or the Company's inability to verify the date of purchase;  
3. Man-made product breakage, wear, scratch, and abnormal wear caused by the watch  
Belt broken,  
4. Disassemble the machine by yourself;  
5. Failure and damage caused by water ingress of the product.

Repair Instructions  
1. When sending for repair, please present this warranty card and purchase voucher, as well as attach the product malfunction Explanation (The final professional maintenance of our company shall prevail. If necessary, we will call you to verify)  
2. For non-warranty products, the company provides paid maintenance services and related costs. Please refer to the relevant service regulations for details of the extended warranty period.

## Special Statement

This watch and APP provide the wearer with a comprehensive system of health and safety functions but this watch is not a professional medical equipment, and the relevant test data is only for reference in daily life and is not used for medical diagnosis. Due to the different versions of the product and its function and appearance configuration is different, the pictures in this operation manual are for reference only, please refer to the actual product you purchased. Due to the continuous upgrading of the product and APP functions, this operation manual is for reference only, and the actual functions of the watch and APP shall prevail.