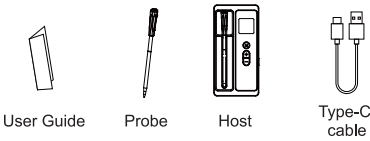


User Manual

CT-T01

Thank you for purchasing our product. This manual addresses the safety guidelines, warranty, and operating instructions. Please review this manual thoroughly before operating your device.

Package Contents

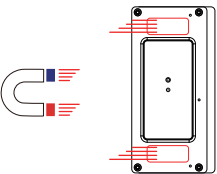


At a Glance

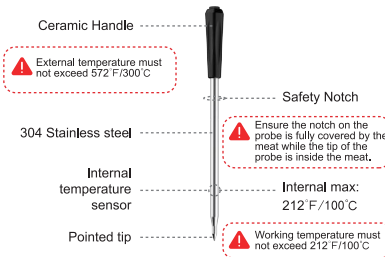


Magnetic design

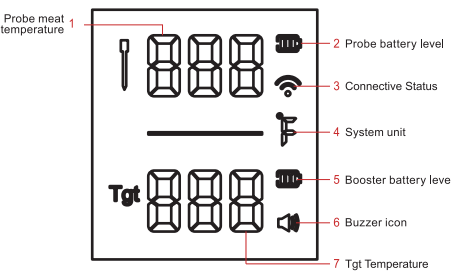
Built-in magnet, it can be firmly attached to the oven (convenient to check the temperature also convenient to store).



Temperature Probe



Screen Display



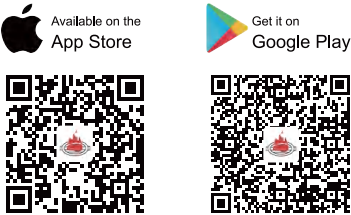
Use via the Host

- ① Temperature Alarm Setting: Press "M" key to enter the alarm temperature setting, press "+, -" key on the host to set the temperature (the upper limit of temperature is 212 F/100°C), press "M" key again to complete the setting (no operation for 20 seconds to confirm automatically), when the meat temperature reaches the target temperature, it will trigger the temperature alarm, press any key to cancel the alarm when it is alarmed. Put the probe into the base, you can cancel the alarm task manually.
- ② Protective alarm: when meat temperature reaches 212 F/100°C, it will trigger the protective alarm, at this time, you can press any key to cancel the alarm, or the alarm will be canceled automatically when the temperature returns to normal.
- ③ Automatic shutdown: no operation for 30 seconds, the screen will go out automatically, press any key, the screen will light up for 30 seconds.

Use via APP

Download the APP

Search "AIBBQ" in App Store or Google play, or scan the following QR code.



iOS 12.0 and above version, Android 6.0 and above version

NOTE:
The APP does not have a cloud server and will not collect personal information from users. Please rest assured to use it.

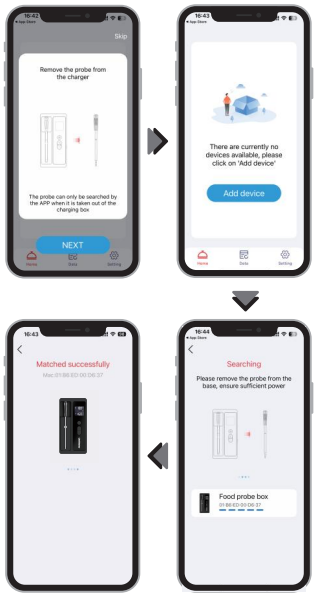
Set up the APP

Turn on Bluetooth on your phone (The Android system must have both Bluetooth and location services enabled), as well as the notification services (Notification includes alarm and pop-up icon).

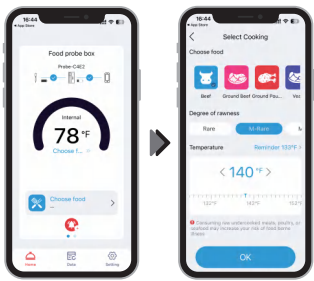


Connect the host for use

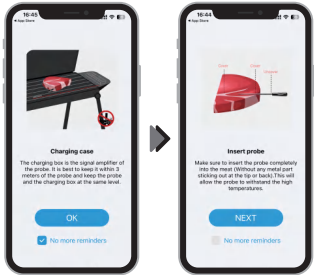
Open the APP and Remove the probe from the charger as shown below, click the "Add device" and then click the "food probe box" to connect. The settings and display of the app will be synchronous with the host.



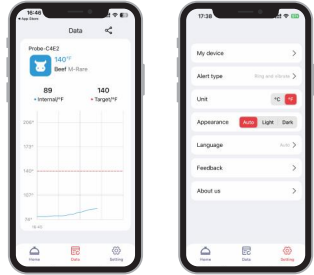
APP operation guide



Step 1: Click the "Choose food" directory and select the preferred ingredients on the menu. Set the desired taste (target temperature) or DIY other food and target temperature.

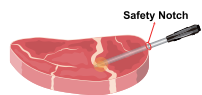


Step 2: Put the charging box in a safe place and insert the probe into the food as shown above.

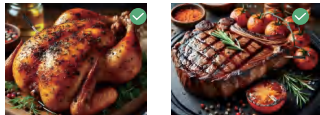


Date Record Other Settings

Attentions ⚠

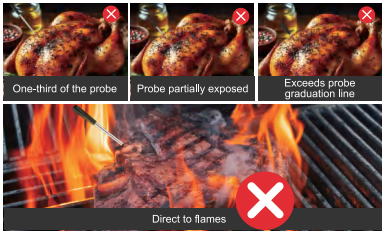


Insert the Probe into the thickest part of the meat,ensure the notch on the probe is fully covered by the meat while the tip of the probe is inside the meat.



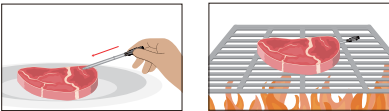
Attentions ⚠

The insertion method of the probe is related to the sensing temperature.The wrong insertion will cause inaccurate temperature measurement or direct damage to the probe.



Important Safety Information

Charcoal Grill Cooking



Always insert the CaloriMastery probe past the safety notch.

Ensure the probe is firmly inserted and not loose before cooking.

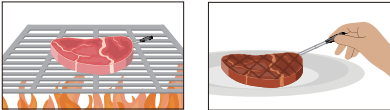
DO NOT cook with CaloriMastery if the probe can't be inserted past the safety notch.

Always wash your hands after handling raw meat.

Place the meat over indirect heat on your grill.

DO NOT remove the probe while it is exposed to heat, The probe must be inserted in and removed from meat away from all heat sources

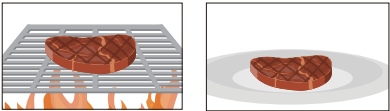
Always use eye protection when removing a probe that has exceeded the maximum temperature or come in contact with not charcoals or direct flames.



Carefully remove the meat from the grill when prompted by the CaloriMastery app.

Ensure the ambient temperature has reduced to safe levels before removing the probe.

If the probe is difficult to remove, pull and twist the ambient end. **DO NOT** bend the probe against the meat.



Once the probe is removed, you can reverse sear your steak over direct heat (above the coals) on your grill for a delicious finish.

Once your meat is seared, serve and enjoy!

Note:

- 1.When using the mobile app/ host to connect the probe to test the temperature, please do not exceed a distance of 325 feet.
- 2.After connecting the app, insert the probe into the centre or thickest part of the food, avoiding the bone, all the way to the safety line position.

Product Specification

Bluetooth Version	5.2(host) , 5.1(Probe)
Probe Size	(152*12.36)mm
Screen Size	1.56 Inch
Wireless Distance	Max 325FT (99M)
host Battery	1000mAH
host Battery Life	48 Hours
Probe Battery Life	18 Hours
Measuring Range	(-4~212°F/-20~100°C)
Backlight time	60S
Waterproof	IP67(Probe)
Accuracy	±1°C/1.8°F
Charging Time	1 Hour(Probe)
host Charging Time	2 Hours
Probe Material	304 Stainless Steel +Ceramic

WARNING ⚠

Burn Hazard

Failure to follow the warnings below may cause the CaloriMastery probe to separate and lead to serious injury or burns.

Always insert the CaloriMastery probe past the safety notch (the minimum insertion point) to avoid product damage and personal injury.

DO NOT use the probe when cooking at temperatures above 212°F/100°C.

DO NOT place CaloriMastery charging unit directly on the grill cover, or too close to any hot surface.

DO NOT remove the probe while it is exposed to heat,The probe must be inserted in and removed from food away from all heat sources.

Always use eye protection when removing a probe that has exceeded the maximum temperature or come in contact with hot charcoals or direct flames.

If the probe falls into the fire or direct heat source,turn off the cooking appliance and close the lid immediately. Allow the probe to cool completely before removing.

DO NOT allow the probe to come in contact with hot charcoal or coals.

The probe will be hot during and after use. Wear heat-resistant gloves when handling the probe.

Foodborne Illness Hazard

Consuming raw or undercooked meats, poultry, or seafood may increase your risk of foodborne illness.Always cook your food to USDA safe temperatures.

CAUTION ⚠

Product Damage Hazard

Always insert the CaloriMastery probe past the safety notch to avoid damage.

DO NOT use the probe in a microwave or pressure cooker.

DO NOT place the CaloriMastery charging unit on any hot surface.

DO NOT drop the probe onto hard surfaces.

DO NOT use cleaning products containing alcohol.ammonium, benzene,or abrasives, all of which could damage the device.

DO NOT run the probe under cold water immediately after cooking, Let the probe cool down prior to washing.

DO NOT exceed the probe's internal sensor limit of 212°F/100°C or the ambient sensor limit of 572°F/300°C.Temperatures above these maximums may damage the probe.

DO NOT expose the CaloriMastery charging unit to moisture,Keep it covered in inclement weather and do not put it in the sink.

Store the probe in a dry, cool place when not in use.This product is only designed for use in food. Use it only for its intended purpose.

Sharp Point Hazard

Always keep the CaloriMastery probe pointed away from fingers and body. Contact may result in injury. Keep out of reach of children.

Warranty & Service

This product is covered with CaloriMastery product and labor warranty for 12 months from the date of its original purchase.Please contact us if you have any questions: support@calorimastery.com

FCC Statement

Any changes or modifications not expressly approved by the party responsible for compliance could void the user's authority to operate the equipment.

This device complies with Part 15 of the FCC Rules. Operation is subject to the following two conditions:

- (1) this device may not cause harmful interference, and
- (2) this device must accept any interference received, including interference that may cause undesired operation.

Note: This equipment has been tested and found to comply with the limits for a Class B digital device, pursuant to Part 15 of the FCC Rules. These limits are designed to provide reasonable protection against harmful interference in a residential installation. This equipment generates, uses, and can radiate radio frequency energy, and if not installed and used in accordance with the instructions, may cause harmful interference to radio communications. However, there is no guarantee that interference will not occur in a particular installation. If this equipment does cause harmful interference to radio or television reception, which can be determined by turning the equipment off and on, the user is encouraged to try to correct the interference by one or more of the following measures:

- Reorient or relocate the receiving antenna.
- Increase the separation between the equipment and receiver.
- Connect the equipment into an outlet on a circuit different from that to which the receiver is connected.
- Consult the dealer or an experienced radio/TV technician for help.



Made in China