



特高传感科技（深圳）有限公司

TeGao Sensing Technology (shenzhen) Co.,LTD

承 认 书

SPECIFICATION FOR APPROVAL

客户名称 Customer Name: 视觉vision

产品型号 Product Model: 灯带控制器Lamp strip controller

客户料号 Customer P/N :

特高料号 TG P/N:

产品规格 SPECIFICATIONS: WIFI2FPCAntenna+1st generation terminal 1.13 Black coaxial line L=200MM

制作日期 Production date: 2024.08.27

封样版本 Sample Version: V1.0

特高（TG）		
编制（FICTION）	结构（Structure）	研发（R&D）
客户（Customer）		
采 购（PUR）	品质（QC）	研发（R&D）

Address: Room 605, Building A, Zhiyun Industrial Park, No.13 Huaxing Road, Dalang Street, Longhua District, Shenzhen



特高传感科技（深圳）有限公司

TeGao Sensing Technology (shenzhen) Co.,LTD

Number	Effective date	Change record
V1.0	2024.08.27	Initial release



一、基本参数Basic parameter

A. Electrical Characteristics	
Frequency	2400MHZ-2500MHZ
VSWR	< 2.0
Avg Efficiency	2.4G>30%
Impedance	50 ± 25 Ohm
Polarization	Linear
Peak Gain	2.4G: 4.20dBi
B. Material & Mechanical Characteristics	
Material of Radiator	FPC black.
Cable Type	Φ1.13mm L=200±2MM
Connector Type	Generation
Dimension	14.40±0.2mm*31.50±0.2mm
C. Environmental	
Operation Temperature	- 20 °C ~ + 60 °C
Storage Temperature	- 30 °C ~ + 70 °C



二、电性规格Electrical specification

Those specifications were specially defined for Lamp strip controller model.

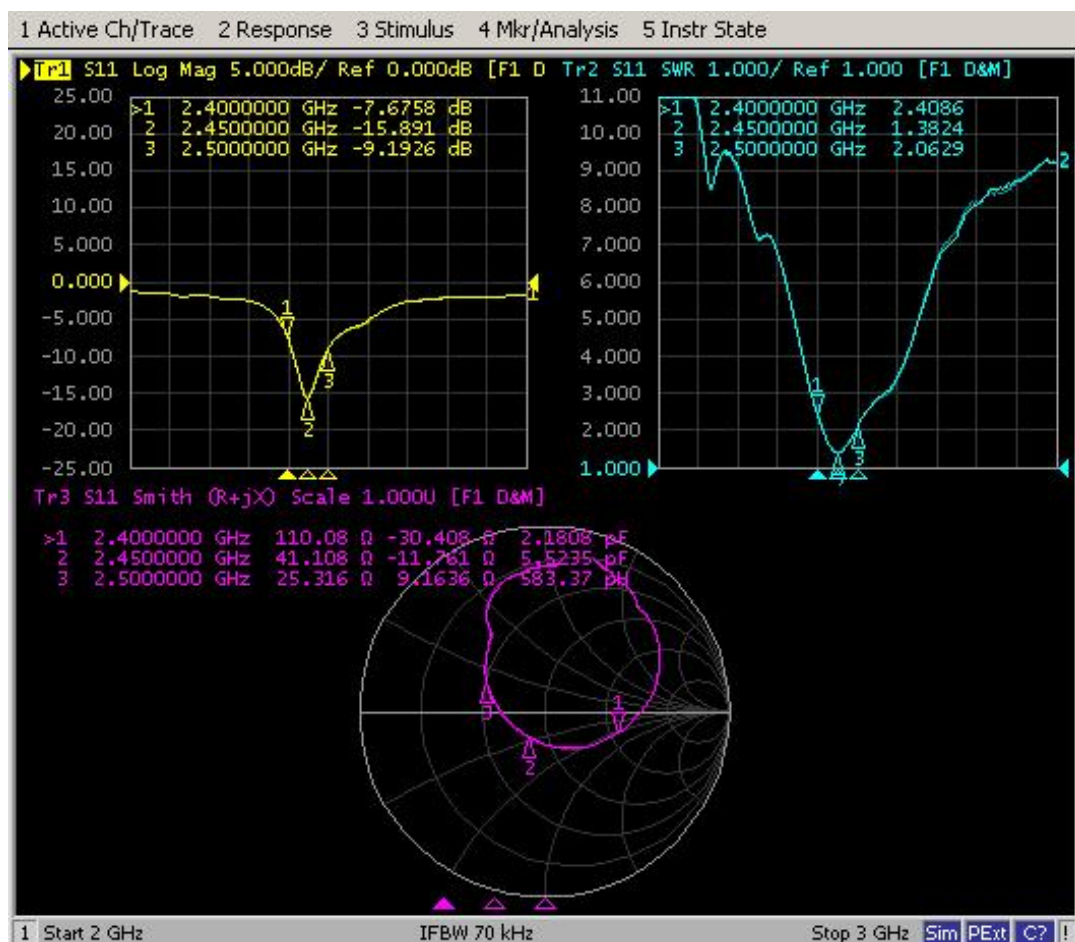
三、VSWR

1 测量方法Measurement method

1.A 50 Ω coaxial cable is connected to the antenna. Then this cable is connected to a network analyzer to measure the VSWR

2.Keeping this jig away from metal at least 20cm

2 测量频率点和驻波比天线2 Measuring frequency point and standing wave ratio antenna 2





四、 暗室简介Brief introduction of darkroom

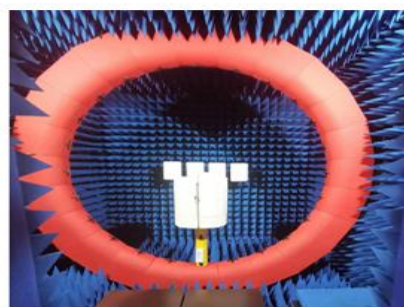
Introduction:

Microwave darkroom and no reflection chamber, absorbing short wave darkroom dark room. Microwave darkroom by electromagnetic shielding room, filtering and isolation, grounding device, the ventilation duct, indoor distribution system, monitoring system, ceiling wave material part. It is based on the wave absorbing material as the lining of the shield room, it can absorb the most of the electromagnetic energy into the six wall is a better simulation of the free space conditions.

The main working principle of microwave anechoic chamber is according to the electromagnetic wave in the medium from the low magnetic guide magnetic direction of propagation rules, absorbing materials to guide the electromagnetic wave using high permeability, through resonance, a substantial absorption of electromagnetic wave radiation energy, by coupling the electromagnetic energy into heat energy.

main performance :

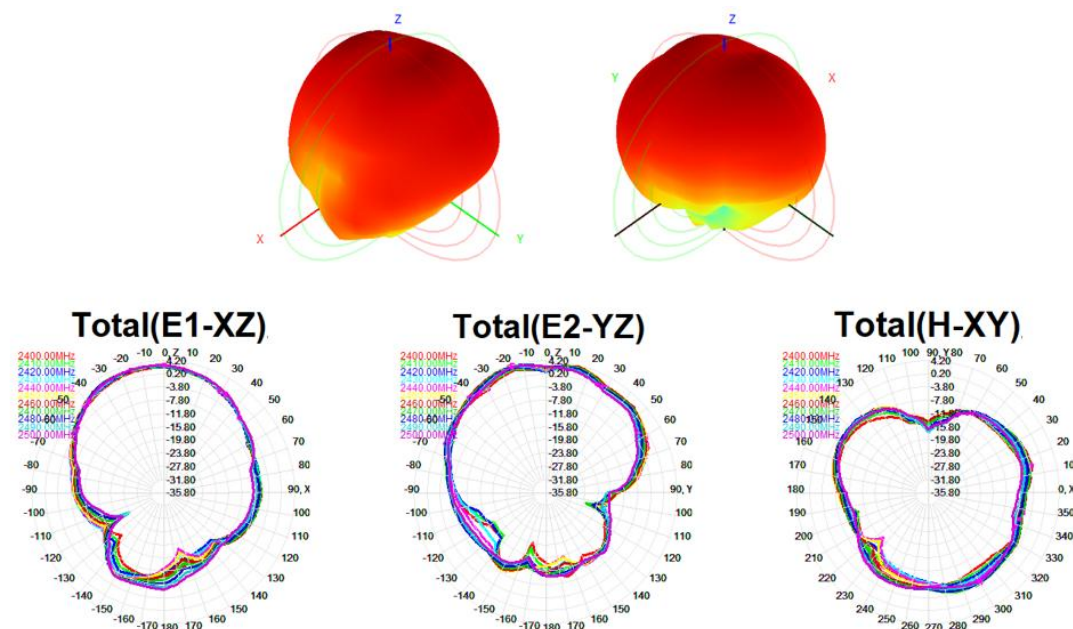
Frequency range:400MHz ~ 6GHz ceiling reflected wave loss materials: 400MHz ~ 6GHz is equal to or more than 15dB (microwave absorbing material by composite wave absorbing materials, namely tapered containing carbon sponge suction wave material paste in ferrite)





五、天线性能Antenna performance

Passive field pattern diagram-2400MHZ-2500MHZ-ANT 2



Passive efficiency gain-2400MHZ-2500MHZ-ANT 2

Frequency (MHz)	Efficiency (%)	Gain (dBi)
2400.0	32.21	3.14
2410.0	35.30	3.55
2420.0	37.36	3.72
2430.0	40.38	3.78
2440.0	42.33	4.03
2450.0	44.00	4.20
2460.0	44.14	4.19
2470.0	42.82	4.04
2480.0	41.04	3.93
2490.0	38.20	3.71
2500.0	36.66	3.58



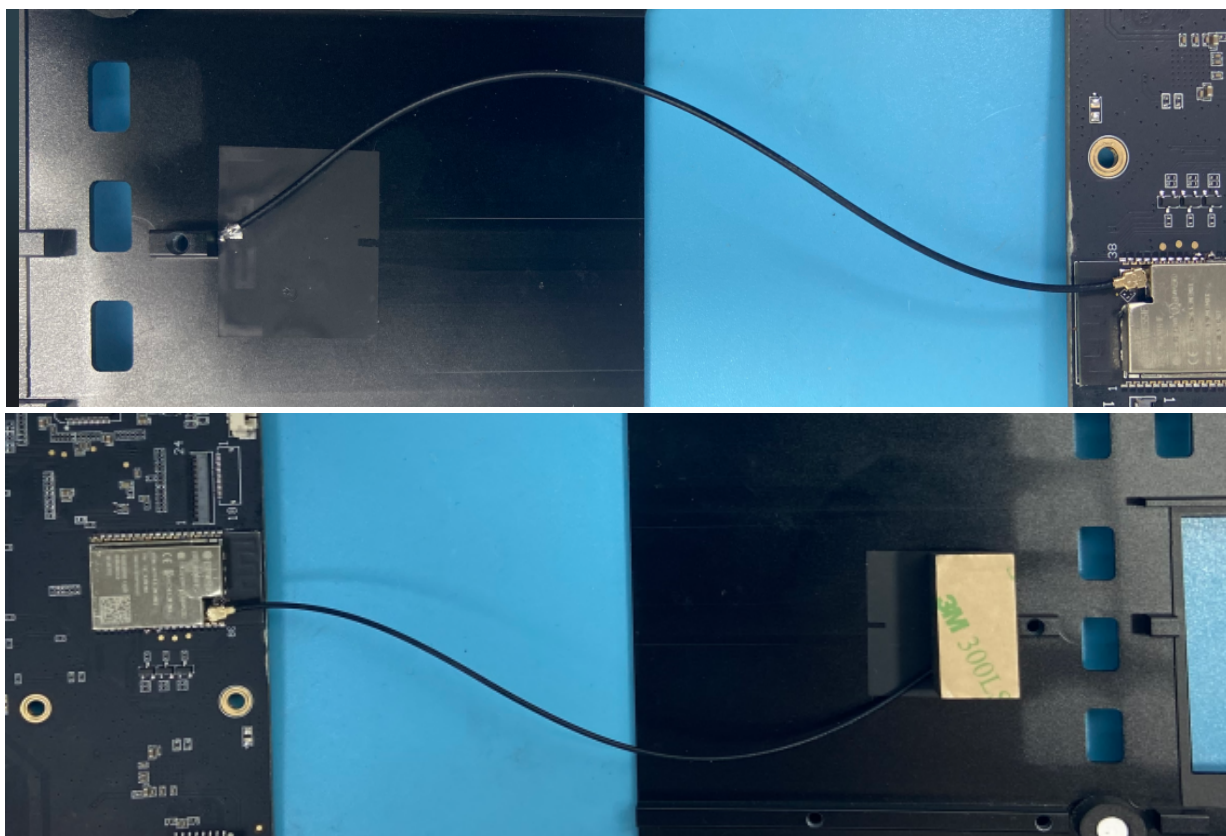
特高传感科技（深圳）有限公司

TeGao Sensing Technology (shenzhen) Co.,LTD

六、机台图片Machine picture

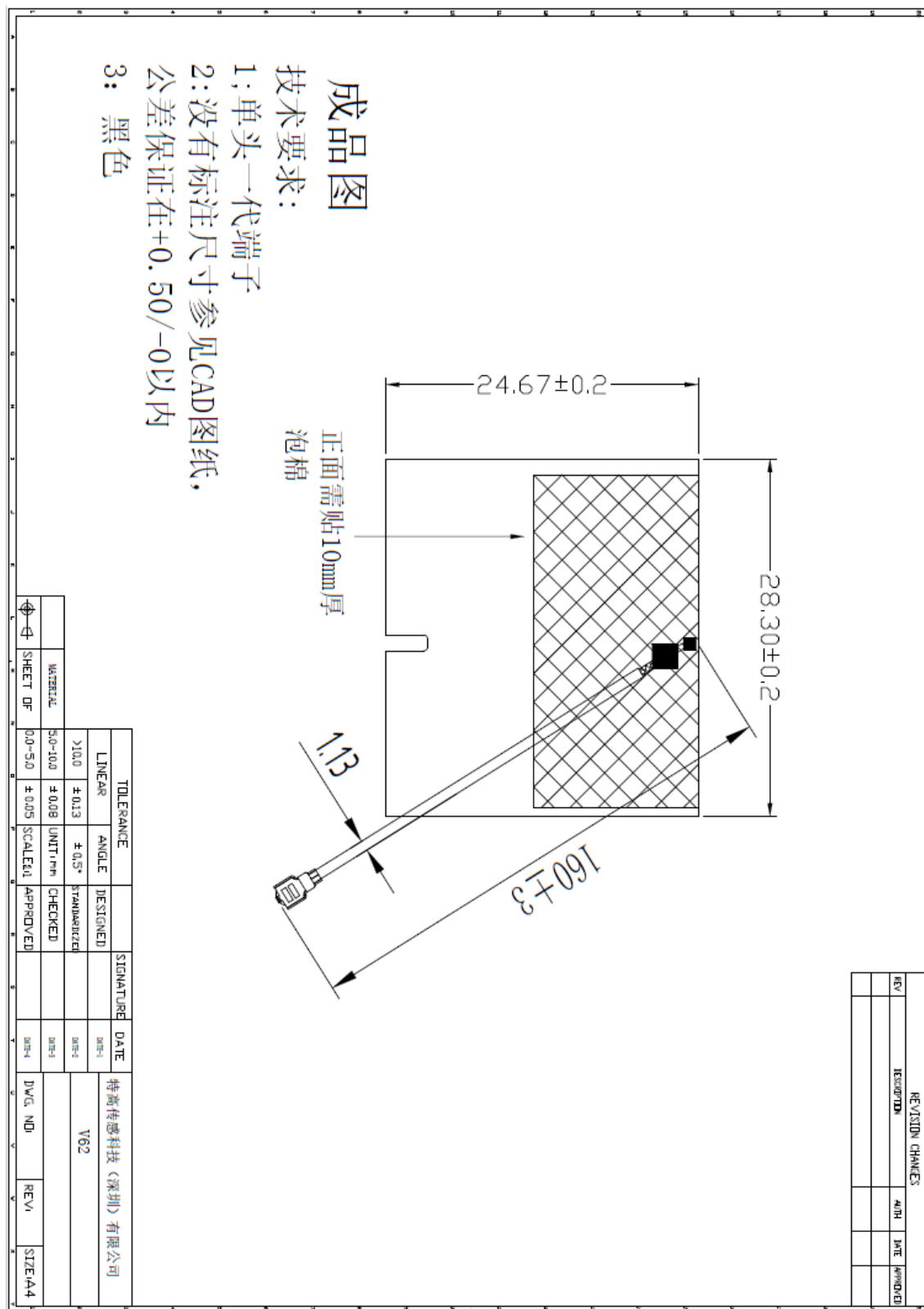


七、天线装配图Antenna assembly drawing





八、天线图纸尺寸Antenna drawing size





九、ROHS

Antenna XHY-灯带控制器 WIFI-V1.0 meets RoHS

requirements.

十、 产品包装说明Product packaging instructions

A. packing should meet the moisture-proof, vibration, pressure and mildew proof, etc.

B. the smallest packing unit logo must have the manufacturer trademarks, product model, name, code and quantity.

C. in the attached packing list, certificate of approval, and the factory inspection report.

*****END*****

*