

Shenzhen source power digital technology Co., LTD

Address: 901, Block A, Baolong Building, No.2 Longguan West Road, Dalangfeng Community, Longhua, Shenzhen
Tel :86-755-8326-6570 Fax: 86-755-8325 5400

BT Antenna Product Approval

Time: 2020-12-4

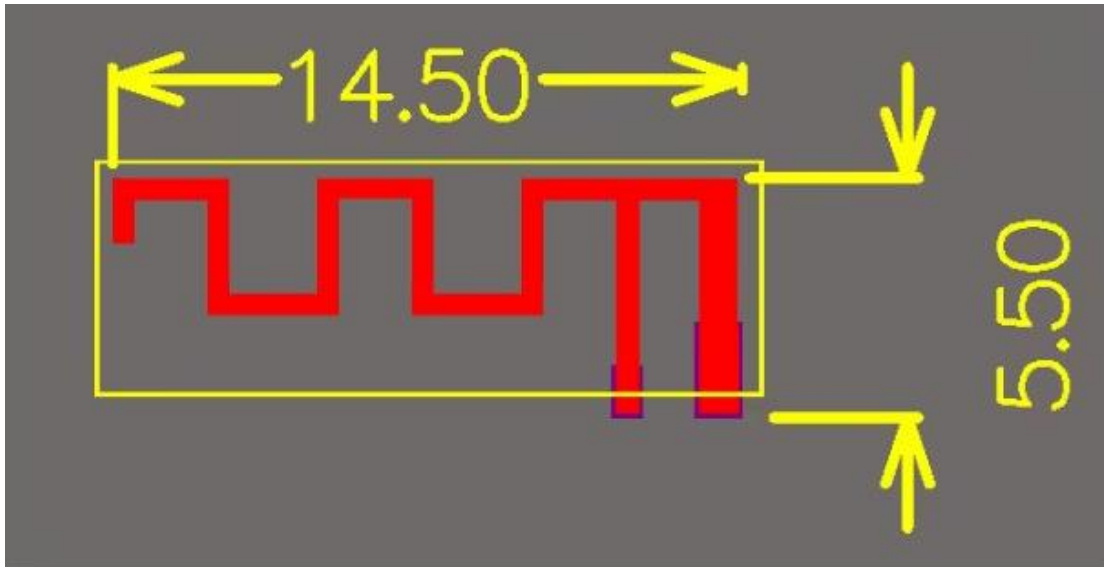
1、 Antenna introduction

Our company's Bluetooth antenna is directly made on the PCB board, the antenna is copper and tin spray process, copper foil thickness: H/HOZ, the plate is FR-4 thickness 1.6mm material

Shenzhen source power digital technology Co., LTD

Address: 901, Block A, Baolong Building, No.2 Longguan West Road, Dalangfeng Community, Longhua, Shenzhen
Tel :86-755-8326-6570 Fax: 86-755-8325 5400

1. Dimension drawing : 14.50*5.50mm



Shenzhen source power digital technology Co., LTD

Address: 901, Block A, Baolong Building, No.2 Longguan West Road, Dalangfeng Community, Longhua, Shenzhen

Tel :86-755-8326-6570 Fax: 86-755-8325 5400

2、Antenna parameter

The Bluetooth antenna operates at 2402-2480 MHz, and resonates in this band. The following table shows the main parameters of the antenna.

Bluetooth built-in antenna	
Frequency (MHz)	2402 ~ 2480 MHz
VSWR	≤ 1.92
Impedance	50 Ohm Nominal
Return Loss	-10 dB Max
Radiation	Omni-directional
Gain (Peak)	-0.35 dBi
Polarization	Linear, Vertical
Admitted Power	2W
Connector	Tin

3、Antenna gain detection report

Spectrum Detector:

PK

Test Date :

June 8, 2013

Test By:

Andy

Temperature :

28°C

Test Result:

PASS

Humidity :

55 %

Modulation:

GFSK

Shenzhen source power digital technology Co., LTD

Address: 901, Block A, Baolong Building, No.2 Longguan West Road, Dalangfeng Community, Longhua, Shenzhen
Tel :86-755-8326-6570 Fax: 86-755-8325 5400

Maximum gain value

Frequency VNA (MHz)	E Total. dB (dB)
2400MHz	-0.347483
2410MHz	-0.502625
2420MHz	-0.772879
2430MHz	-0.955555
2440MHz	-1.23072
2450MHz	-1.94066
2460MHz	-1.90725
2470MHz	-2.01968
2480MHz	-2.30721
2490MHz	-2.28333
2500MHz	-2.8728